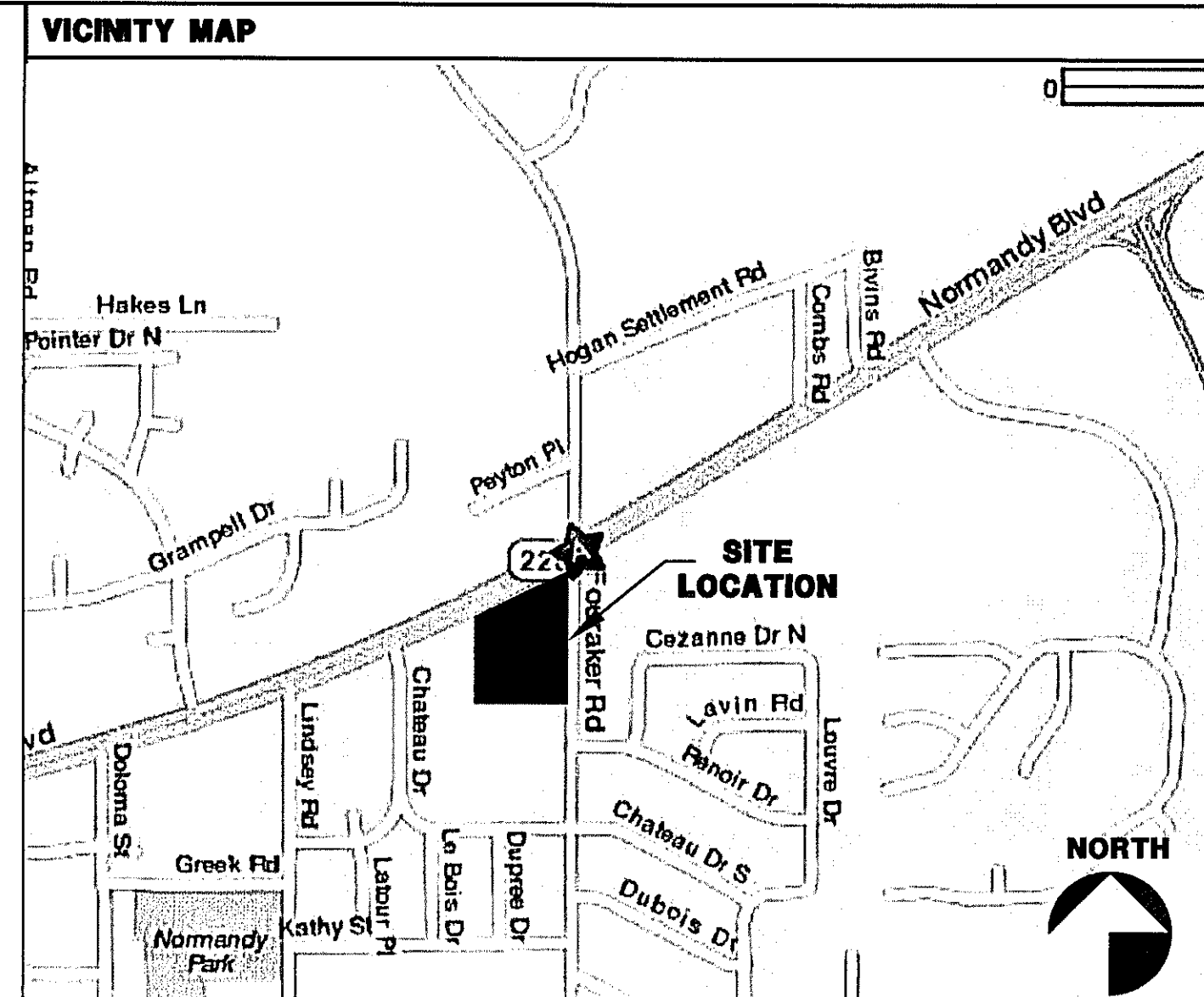


REQUIREMENT:
 PER ADAAG SECTION 4.1.2 (1): AT LEAST ONE ACCESSIBLE ROUTE COMPLYING WITH 4.3 SHALL BE PROVIDED WITHIN THE BOUNDARY OF THE SITE FROM PUBLIC TRANSPORTATION STOPS, ACCESSIBLE PARKING SPACES, PASSENGER LOADING ZONES IF PROVIDED AND PUBLIC STREETS OR SIDEWALKS TO AN ACCESSIBLE BUILDING ENTRANCE.
 PREFERRED LOCATION FOR ACCESSIBLE ROUTE SHALL COINCIDE WITH PEDESTRIAN ACCESS TO CORNER. OTHERWISE LOCAL ARCHITECT TO DETERMINE BEST LOCATION TO CONFORM TO SLOPE ALLOWANCES DEFINED BY ADA.
 VERIFY COMPLIANCE WITH MORE STRINGENT LOCAL CODES.

CRITERIA SLOPE PERCENTAGE REQUIREMENTS:
 PER CRITERIA ALL SIDEWALKS ALONG THE FRONT ENTRY ARE TO RECEIVE A MIN SLOPE OF 1.5% (2% MAX) IN ANY DIRECTION. GRADES SHALL NOT EXCEED 5% (12%) NOR BE LESS THAN 1.5% (2% MAX) IN ADA PARKING SPACES AND 1.66% MAX CROSS SLOPE IN RECEIVING AREA. THIS SHALL APPLY TO ALL OFF-PROPERTY CROSS EASEMENTS AND DRIVE APRON TRANSITIONS WITHIN ADJACENT ROADWAYS. CRITERIA FURTHER CLARIFIES A RAMP AS ANY SLOPE GREATER THAN 1:20 (5%) AND SHALL HAVE A MAXIMUM SLOPE OF 1:12 (8.33%). THE MAXIMUM SLOPE IS 1" OF RISE PER FOOT OF DISTANCE TRAVELED.

THE A01 ARCHITECTURAL SITE PLAN SHOWN ON THIS SHEET IS TO CONVEY THE BASIC SITE LAYOUT AND IS NOT TO BE USED TO CONSTRUCT THE FINAL LAYOUT. REFER TO THE CIVIL ENGINEER OF RECORD FOR SITE LAYOUT DOCUMENTS.

WIND DESIGN CRITERIA
 1. BASIC WIND SPEED = 110 MPH, 3 SECOND GUST
 2. IMPORTANCE FACTOR (I) = 1.0, BUILDING CATEGORY II
 3. WIND EXPOSURE "B"
 4. INTERNAL PRESSURE COEFFICIENT:
 FULLY ENCLOSED: $C_{pi} = +/-0.18$ (ASCE 7-05)
 5. COMPONENTS AND CLADDING: REFER TO SHEET S2.2 DESIGN LOADS



PROJECT INFORMATION
 ZONING: REFER TO CIVIL DRAWINGS
 APPLICABLE CODES:
 STRUCTURE HAS BEEN DESIGNED IN COMPLIANCE WITH THE 2007 FLORIDA BUILDING CODE WITH 2009 AMENDMENTS.
 • FLORIDA BUILDING CODE, BUILDING (FBC-B) 2007 EDITION (WITH 2009 SUPPLEMENTS)
 • FLORIDA BUILDING CODE, MECHANICAL (FBC-M) 2007 EDITION (WITH 2009 SUPPLEMENTS)
 • FLORIDA BUILDING CODE, FUEL GAS (FBC-FG) 2007 EDITION (WITH 2009 SUPPLEMENTS)
 • FLORIDA BUILDING CODE, PLUMBING (FBC-P) 2007 EDITION (WITH 2009 SUPPLEMENTS)
 • FLORIDA FIRE PREVENTION CODE (FFPC) 2007 EDITION (WITH 2009 SUPPLEMENTS)
 • NATIONAL ELECTRICAL CODE (NEC) 2005 EDITION
 SQUARE FOOTAGE: 14,175 SQ. FEET
 FBC SECTION 506, AREA MODIFICATION, IS LOCATED ON SHEET A0.2 LIFE SAFETY PLAN
 OCCUPANT LOAD: 3% PERSONS
 CONSTRUCTION TYPE: V-B UNPROTECTED, FULLY SPRINKLED
 OCCUPANCY CLASS: MERCANTILE
 SPRINKLED: YES
 FIRE SPRINKLER SYSTEM AND FIRE ALARM CONTRACTORS SHALL SUBMIT A SEPARATE PERMIT APPLICATIONS AND PLANS FOR REVIEW. NFPA 1, 1.14.2, FLORIDA 2007 EDITION.
 PARKING STALLS REQUIRED: (SEE CIVIL)
 PARKING STALLS PROVIDED: 50 (2 HANDICAP INCLUDED)
 MAX. TRAVEL DIST. ALLOWED: 250 FT.
 NUMBER OF EXITS: 4
 RESTROOMS PROVIDED: MENS- 1 W.C. WOMEN- 2 W.C.
 1 URINAL 2 LAV. 2 LAV.



OWNER / TENANT:
 WALGREENS FACILITIES PLANNING/DESIGN
 106 WILMOT ROAD MS #1620
 DEERFIELD, ILLINOIS 60015
 ATTN: LESLIE WINGLOW
 TEL: (847) 315-4992
 FAX: (847) 315-4901
 EMAIL: Leslie.Winglow@Walgreens.com

ARCHITECT:
 FWH ARCHITECTS, INC.
 3336 GRAND BLVD., SUITE 102
 HOLIDAY, FLORIDA 34690
 ATTN: GUY FABER
 TEL: (727) 815-3336
 FAX: (727) 815-3337
 EMAIL: faber@fwharchitects.com

MECH/PLUMBING:
 RENNA ENTERPRISES, INC.
 3231 DRANE FIELD ROAD
 LAKELAND, FLORIDA 33811
 ATTN: RON RENNA
 TEL: (863) 646-1258
 FAX: (863) 646-8881
 EMAIL: ronrenna@rei-fl.com

DEVELOPER:
 ROCK PROPERTIES, INC.
 111 E. FAIRBANKS AVENUE SUITE 100
 WINTER PARK, FLORIDA 32789
 ATTN: ALAN GUENTHER
 TEL: (407) 478-8220
 FAX: (407) 478-8221
 EMAIL: alan@rockpe.com

STRUCTURAL:
 AGC PROFESSIONAL ENGINEERING
 1427 MELODY FAIR PLACE
 LUTZ, FLORIDA 33558
 ATTN: ALAN GUENTHER
 TEL: (813) 926-0568
 FAX: (813) 926-0562
 EMAIL: alan@agcpe.com

CIVIL:
 TAYLOR & WHITE, INC.
 8436 WESTERN WAY, STE 190
 JACKSONVILLE, FL 32256
 ATTN: ALEX ACREE, E.I.
 TEL: (904) 346-0671
 FAX: (904) 346-3051
 EMAIL: Alex.Acree@taylorandwhite.com

ELECTRICAL:
 CHEHAJEV & ASSOCIATES
 3702 AZEEL STREET
 TAMPA, FLORIDA 33609
 ATTN: BRIAN AITKEN
 TEL: (813) 876-1415
 FAX: (813) 876-0913
 EMAIL: brian.aitken@chehajevo.com

BUILDING DEPT.:
 CITY OF JACKSONVILLE
 BUILDING INSPECTION DIVISION
 EDWARD HALL BUILDING, 2ND FLOOR
 214 NORTH BOLLAN ST, ROOM 280
 JACKSONVILLE, FL 32202
 ATTN: THOMAS GOLDSBURY
 TEL: (904) 630-1100
 FAX: (904) 255-8542

FIRE PROTECTION:
 JAMES M. CURTIS
 23775 BAYHEAD ROAD
 DADE CITY, FLORIDA 33523
 ATTN: STEVE SHEA
 TEL: (813) 842-5068
 EMAIL: sshea001@campbay.rr.com

FWH Architects
 FWH Architects, Inc.
 3336 Grand Blvd. Suite 102
 Holiday, Florida 34690
 Ph. 727. 815. 3336
 Fax 727. 815. 3337

PROJECT TYPE
 DRAWINGS/SPECIFICATIONS BY:
 WALGREENS' CONSULTANT
 LANDLORD'S CONSULTANT
 CONSTRUCTION WORK BY: (UNLESS NOTED OTHERWISE)
 WALGREENS' CONTRACTOR
 LANDLORD'S CONTRACTOR (TURNKEY CONSTRUCTION)

STORE	BUILDING
NEW..... <input type="checkbox"/>	NEW..... <input type="checkbox"/>
REMODELING... <input type="checkbox"/>	EXISTING..... <input type="checkbox"/>
RELOCATION... <input type="checkbox"/>	NEW SHELL ONLY <input type="checkbox"/>
OTHER..... <input type="checkbox"/>	

PROJECT DATA

TYPE	GENERAL SALES	MARKET
NEW LOCATION <input checked="" type="checkbox"/>	PHARMACY <input type="checkbox"/>	SECURITY (1) <input type="checkbox"/>
EXISTING BLDG <input type="checkbox"/>	PHOTO <input type="checkbox"/>	24 HOUR STORE <input type="checkbox"/>
REMODEL <input type="checkbox"/>	BEER & WINE <input type="checkbox"/>	OTHER <input type="checkbox"/>

CONSTRUCTION BULLETINS

THE FOLLOWING CONSTRUCTION BULLETINS HAVE BEEN IMPLEMENTED INTO THIS SET

NO.	NAME	NO.	NAME
b020701	GENERAL PROJECT DATA & SITE PLAN	S01	SATELLITE DETAILS
b020702		S11	FOUNDATION PLAN
b020703		S21	ROOF FRAMING PLAN
b020704		S22	TOWER FRAMING PLANS
b020705		S31	WALL SECTIONS
b020706		S32	WALL SECTIONS
b020707		S33	SECTIONS
b020708		S41	FOUNDATION DETAILS
b020709		S42	DETAILS
b020710		S43	DETAILS
b020711		S44	DETAILS
b020712		S51	STRUCTURAL NOTES
b020713		F01	FIRE PROTECTION NOTES AND DETAILS
b020714		F02	FIRE PROTECTION FLOOR PLAN
b020715		M01	MECHANICAL FLOOR PLAN
b020716		M02	MECHANICAL RADON REMOVAL PLAN
b020717		M21	MECHANICAL DETAILS
b020718		M22	MECHANICAL SCHEDULES
b020719		M31	HVAC CONTROL CONCEPT OF OPERATION
b020720		P11	PLUMBING FLOOR PLAN
b020721		P21	PLUMBING NOTES AND DETAILS
b020722		E01	SITE ELECTRICAL PLAN
b020723		E01A	PHOTOMETRIC SITE PLAN
b020724		E11	FLOOR PLAN - LIGHTING
b020725		E12	FLOOR PLAN - POWER
b020726		E13	FLOOR PLAN - ETHERNET & SATELLITE SYSTEM
b020727		E14	FLOOR PLAN - BURGLAR ALARM & CCTV SYSTEM
b020728		E15	FLOOR PLAN - TELEPHONE & SOUND SYSTEM
b020729		E16	FLOOR PLAN - FIRE ALARM SYSTEM & SPARE CONDUIT
b020730		E17	FLOOR PLAN - CHANNEL LETTER LED SYSTEM
b020731		E21	FEEDER DIAGRAM / ELECTRICAL DETAILS
b020732		E21A	CONTROL SCHEDULE
b020733		E21B	CONTROL DIAGRAMS
b020734		E21C	TESTING MSC ELECTRICAL DETAILS
b020735		E22	UNINTERRUPTIBLE POWER SYS & PANEL SCHED.
b020736		E31	ELECTRICAL PANEL SCHEDULES
b020737		E41	LUMINAIRE SCHEDULE & DETAILS
b020738		E42	SATELLITE SYSTEM DETAILS
b020739		E43	ELECTRICAL DETAILS
b020740		E44	ELECTRICAL DETAILS
b020741		E45	COOLER/FREEZER WIRING DIAGRAMS
b020742		E46	AIR CURTAIN WIRING DIAGRAM
b020743			
b020744			
b020745			
b020746			
b020747			
b020748			
b020749			
b020750			
b020751			
b020752			
b020753			
b020754			
b020755			
b020756			
b020757			
b020758			
b020759			
b020760			
b020761			
b020762			
b020763			
b020764			
b020765			
b020766			
b020767			
b020768			
b020769			
b020770			
b020771			
b020772			
b020773			
b020774			
b020775			
b020776			
b020777			
b020778			
b020779			
b020780			
b020781			
b020782			
b020783			
b020784			
b020785			
b020786			
b020787			
b020788			
b020789			
b020790			
b020791			
b020792			
b020793			
b020794			
b020795			
b020796			
b020797			
b020798			
b020799			
b020800			

INDEX TO DRAWINGS

NO.	NAME	NO.	NAME
A01	GENERAL PROJECT DATA & SITE PLAN	S01	SATELLITE DETAILS
C01	COVER	S11	FOUNDATION PLAN
C02	GENERAL NOTES, LEGEND AND ABBREVIATIONS	S21	ROOF FRAMING PLAN
C03	POST-DEVELOPMENT DRAINAGE MAP	S22	TOWER FRAMING PLANS
C04	DEMOLITION PLAN	S31	WALL SECTIONS
C05	EROSION AND SEDIMENT CONTROL PLAN	S32	WALL SECTIONS
C06	EROSION AND SEDIMENT CONTROL DETAILS AND STORM WATER POLLUTION PREVENTION PLAN	S33	SECTIONS
C07	GEOMETRY PLAN	S41	FOUNDATION DETAILS
C08	MASTER PAVING, GRADING & DRAINAGE PLAN	S42	DETAILS
C09	DRAINAGE PLAN	S43	DETAILS
C10	PAVING & GRADING PLAN	S44	DETAILS
C11	PAVING, CURBING & DRAINAGE DETAILS	S51	STRUCTURAL NOTES
C12	PAVING, CURBING & DRAINAGE DETAILS	F01	FIRE PROTECTION NOTES AND DETAILS
C13	ACCESSIBILITY, PAVING & DRAINAGE DETAILS	F02	FIRE PROTECTION FLOOR PLAN
C14	MAINTENANCE OF TRAFFIC PLAN	M01	MECHANICAL FLOOR PLAN
C15	MAINTENANCE OF TRAFFIC PLAN	M02	MECHANICAL RADON REMOVAL PLAN
C16	MAINTENANCE OF TRAFFIC PLAN	M21	MECHANICAL DETAILS
C17	MAINTENANCE OF TRAFFIC PLAN	M22	MECHANICAL SCHEDULES
C18	MAINTENANCE OF TRAFFIC PLAN	M31	HVAC CONTROL CONCEPT OF OPERATION
C19	MAINTENANCE OF TRAFFIC PLAN	P11	PLUMBING FLOOR PLAN
C20	MAINTENANCE OF TRAFFIC PLAN	P21	PLUMBING NOTES AND DETAILS
C21	MAINTENANCE OF TRAFFIC PLAN	E01	SITE ELECTRICAL PLAN
C22	MAINTENANCE OF TRAFFIC PLAN	E01A	PHOTOMETRIC SITE PLAN
C23	MAINTENANCE OF TRAFFIC PLAN	E11	FLOOR PLAN - LIGHTING
C24	MAINTENANCE OF TRAFFIC PLAN	E12	FLOOR PLAN - POWER
C25	MAINTENANCE OF TRAFFIC PLAN	E13	FLOOR PLAN - ETHERNET & SATELLITE SYSTEM
C26	MAINTENANCE OF TRAFFIC PLAN	E14	FLOOR PLAN - BURGLAR ALARM & CCTV SYSTEM
C27	MAINTENANCE OF TRAFFIC PLAN	E15	FLOOR PLAN - TELEPHONE & SOUND SYSTEM
C28	MAINTENANCE OF TRAFFIC PLAN	E16	FLOOR PLAN - FIRE ALARM SYSTEM & SPARE CONDUIT
C29	MAINTENANCE OF TRAFFIC PLAN	E17	FLOOR PLAN - CHANNEL LETTER LED SYSTEM
C30	MAINTENANCE OF TRAFFIC PLAN	E21	FEEDER DIAGRAM / ELECTRICAL DETAILS
C31	MAINTENANCE OF TRAFFIC PLAN	E21A	CONTROL SCHEDULE
C32	MAINTENANCE OF TRAFFIC PLAN	E21B	CONTROL DIAGRAMS
C33	MAINTENANCE OF TRAFFIC PLAN	E21C	TESTING MSC ELECTRICAL DETAILS
C34	MAINTENANCE OF TRAFFIC PLAN	E22	UNINTERRUPTIBLE POWER SYS & PANEL SCHED.
C35	MAINTENANCE OF TRAFFIC PLAN	E31	ELECTRICAL PANEL SCHEDULES
C36	MAINTENANCE OF TRAFFIC PLAN	E41	LUMINAIRE SCHEDULE & DETAILS
C37	MAINTENANCE OF TRAFFIC PLAN	E42	SATELLITE SYSTEM DETAILS
C38	MAINTENANCE OF TRAFFIC PLAN	E43	ELECTRICAL DETAILS
C39	MAINTENANCE OF TRAFFIC PLAN	E44	ELECTRICAL DETAILS
C40	MAINTENANCE OF TRAFFIC PLAN	E45	COOLER/FREEZER WIRING DIAGRAMS
C41	MAINTENANCE OF TRAFFIC PLAN	E46	AIR CURTAIN WIRING DIAGRAM
C42	MAINTENANCE OF TRAFFIC PLAN		
C43	MAINTENANCE OF TRAFFIC PLAN		
C44	MAINTENANCE OF TRAFFIC PLAN		
C45	MAINTENANCE OF TRAFFIC PLAN		
TM-1	TREE PRESERVATION/MITIGATION PLAN		
LS-1a	LANDSCAPE PLAN		
LS-2	FRIGATION PLAN		
LS-3	CALCULATIONS, NOTES & DETAILS		
LS-4	ROOT BARRIER NOTES & DETAILS		
A02	LIFE SAFETY PLAN		
C62	SIDEWALK PLAN & DETAILS		
C63	SITE DETAILS		
D1	FFTRURE PLAN (FOR REFERENCE ONLY)		
A11	FLOOR PLAN, NOTES & SCHEDULES		
A12	REFLECTED CEILING PLAN & NOTES		
A13	ROOF PLAN & DETAILS		
A14	ROOF DETAILS		
A21	EXTERIOR ELEVATIONS, DETAILS & SIGN DATA		
A22	WALL SECTIONS AND DETAILS		
A23	WALL SECTIONS AND DETAILS		
A24	WALL SECTIONS AND DETAILS		
A31	INTERIOR ELEVATIONS & DETAILS		
A41	ENLARGED FR PLAN & DETAILS		
A42	ENLARGED RESTROOM PLAN & DETAILS		
A43	DOOR SCHEDULE AND NOTES		
A44	DEBOLD DRIVE-THRU SERVICE WINDOW DETAILS		
A45	ROOF CURB AND DOOR DETAILS		
A51	SITE SIGNAGE DETAILS		
A52	EXTERIOR SIGN DATA		

REVISION LOG

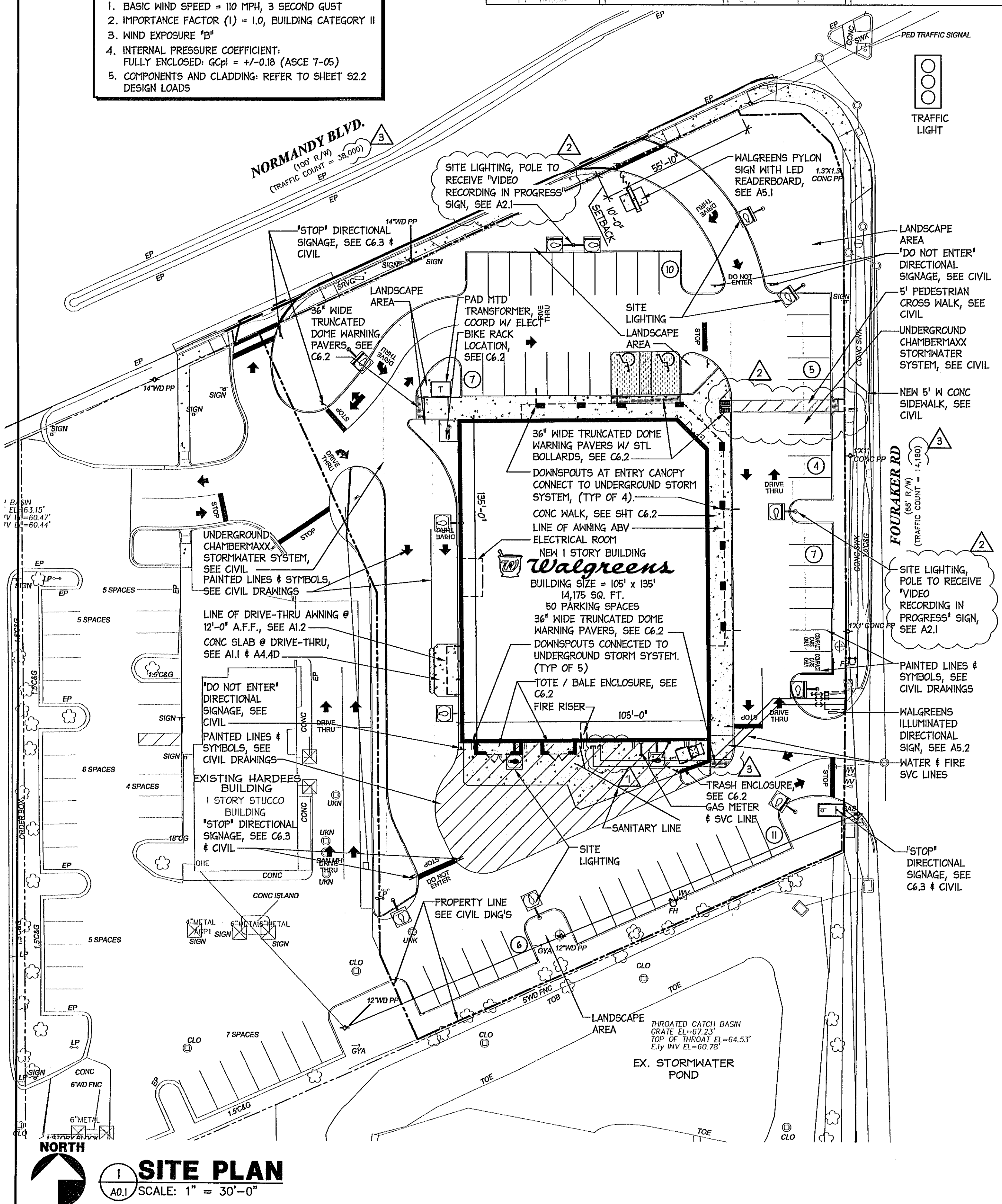
INDICATES SHEET AFFECTED

NO.	DATE	DESCRIPTION
01.08.10	REVISED PER COJ PLAN REVIEW COMMENTS	
02.05.10	REVISED PER WGS 1ST REVIEW COMMENTS	
04.05.10	REVISED PER WGS 2ND REVIEW COMMENTS	
04.26.10	REVISED PER WAGD CB 09-044	

REVISION LOG

INDICATES SHEET AFFECTED

NO.	DATE	DESCRIPTION
01.08.10	REVISED PER COJ PLAN REVIEW COMMENTS	
02.05.10	REVISED PER WGS 1ST REVIEW COMMENTS	
04.05.10	REVISED PER WGS 2ND REVIEW COMMENTS	
04.26.10	REVISED PER WAGD CB 09-044	



I HEREBY CERTIFY THAT THIS PLAN AND SPECIFICATION WAS PREPARED BY ME OR UNDER MY DIRECT SUPERVISION AND THAT I AM A DULY REGISTERED ARCHITECT OR ENGINEER UNDER THE LAWS OF THE STATE OF FLORIDA AS SIGNIFIED BY MY HAND AND SEAL.

GUY F. FABER
 FL LICENSE NO. AR0015325

PROJECT NAME
STORE #13450 (SWC) OF FOURAKER & NORMANDY JACKSONVILLE, FLORIDA

DRAWING TITLE
GEN. PROJECT DATA AND SITE PLAN

DATE: 11.30.09	WALGREENS STORE NO. 13450	DRAWING NO.
DRAWN BY: AB	SCALE: AS NOTED	A0.1
REVIEWED BY: SK	RELEASED TO CONSTRUCTION 04.05.10	FWH PROJECT NO. 0913