

PROJECT TYPE
 DRAWINGS/SPECIFICATIONS BY:
 WALGREENS' CONSULTANT
 LANDLORD'S CONSULTANT
 CONSTRUCTION WORK BY: (UNLESS NOTED OTHERWISE)
 WALGREENS' CONTRACTOR
 LANDLORD'S CONTRACTOR (TURNKEY CONSTRUCTION)

STORE	BUILDING
NEW.....	NEW.....
REMODELING...	EXISTING.....
RELOCATION...	NEW SHELL ONLY
OTHER.....	

REFLECTED CEILING LEGEND

○ SUPPLY AIR	○ WALL PACK
□ RETURN AIR	□ WALL PACK - SITE
□ FLUORESCENT LIGHTING - SEE LIGHTING SCHEDULE	□ EXIT LIGHTING
□ DRIVE THRU # ENTRY CANOPY SOFFIT LIGHTING	□ EXHAUST FAN
○ RECESSED DOWNLIGHT	○ PERSONAL VIEW MONITOR
○ SPEAKER (CEILING MOUNTED)	○ 5' CCTV
○ SPEAKER W/ INTEGRATED VOLUME CONTROL	○ MULTI-POSITIONAL GLOBE BY WALGREENS
	○ SPRINKLER HEAD

CRITERIA NOTES

- GENERAL SALES AREA CEILING SHALL BE A MINIMUM OF 13'-0" A.F.F. THERE SHALL BE A MINIMUM OF 2'-0" CLEARANCE TO THE BOTTOM OF ANY ROOF STRUCTURE. THIS IS FOR LIGHTING, SPRINKLER PIPING, AND MECHANICAL EQUIPMENT.
- THE LIGHT SPACING SHALL BE A MAXIMUM OF 9'-0" CENTER OF LIGHT FIXTURE TO CENTER LINE OF LIGHT FIXTURE FOR ALL CEILING HEIGHTS.
- IN SALES AREA CEILING, THE DIMENSIONS FROM FACE OF THE WALL (SETTLE OR HURDLE EDGE) TO THE CENTERLINE OF THE 1'-0" WIDE LIGHT FIXTURE RUNNING PARALLEL TO SOFFIT, WALL, OR MIRROR EDGE SHALL BE BETWEEN 1'-6" TO 2'-9".
- IDENTIFY CEILING LAYOUT STARTING POINT TO ENSURE THAT LIGHT FIXTURES ARE CONTINUOUS AND UNINTERRUPTED BY COLUMNS. SUPPLY AIR DIFFUSERS ARE TO BE LOCATED 2'-0" MINIMUM AWAY FROM GENERAL SALES AREA LIGHTS.
- CEILING SHALL NOT BE USED FOR SUPPORTING ANY BUILDING INSULATION. ROOF CONSTRUCTION SHALL PROVIDE THE REQUIRED INSULATION VALUE. CEILING LIGHTS ARE TO BE WIRED TO BAR JOIST MEMBERS AT THE DIAGONAL CORNERS. DO NOT ATTACH CEILING COMPONENTS TO ROOF DECK.
- ALL CEILING HEIGHTS, CEILING MATERIALS & LIGHT FIXTURE SPACINGS ARE AS SHOWN ON REFLECTED CEILING PLAN. ANY DEVIATION FROM THESE REQUIREMENTS MUST BE APPROVED BY WALGREENS IN WRITING.
- N/A
- LOCKABLE ACCESS PANEL REQUIRED IN ALL ROOMS WITH GMB CEILINGS.
- N/A

SUSPENSION SYSTEM DETAILS:
 NOTE: SHADED SYMBOL INDICATES REQUIREMENTS FOR THIS PROJECT.

NO.	DATE	DESCRIPTION
1	02.05.10	REVISED PER WGS 1ST REVIEW COMMENTS
2	04.05.10	REVISED PER WGS 2ND REVIEW COMMENTS
3	04.26.10	REVISED PER WGS CB 09-044

NO.	DATE	DESCRIPTION
REVISIONS		
CERTIFICATION AND SEAL		
I HEREBY CERTIFY THAT THIS PLAN AND SPECIFICATION WAS PREPARED BY ME OR UNDER MY DIRECT SUPERVISION AND THAT I AM A DULY REGISTERED ARCHITECT OR ENGINEER UNDER THE LAWS OF THE STATE OF FLORIDA AS SIGNIFIED BY MY HAND AND SEAL.		
CLY F. FABER FL LICENSE NO. AR0075323		

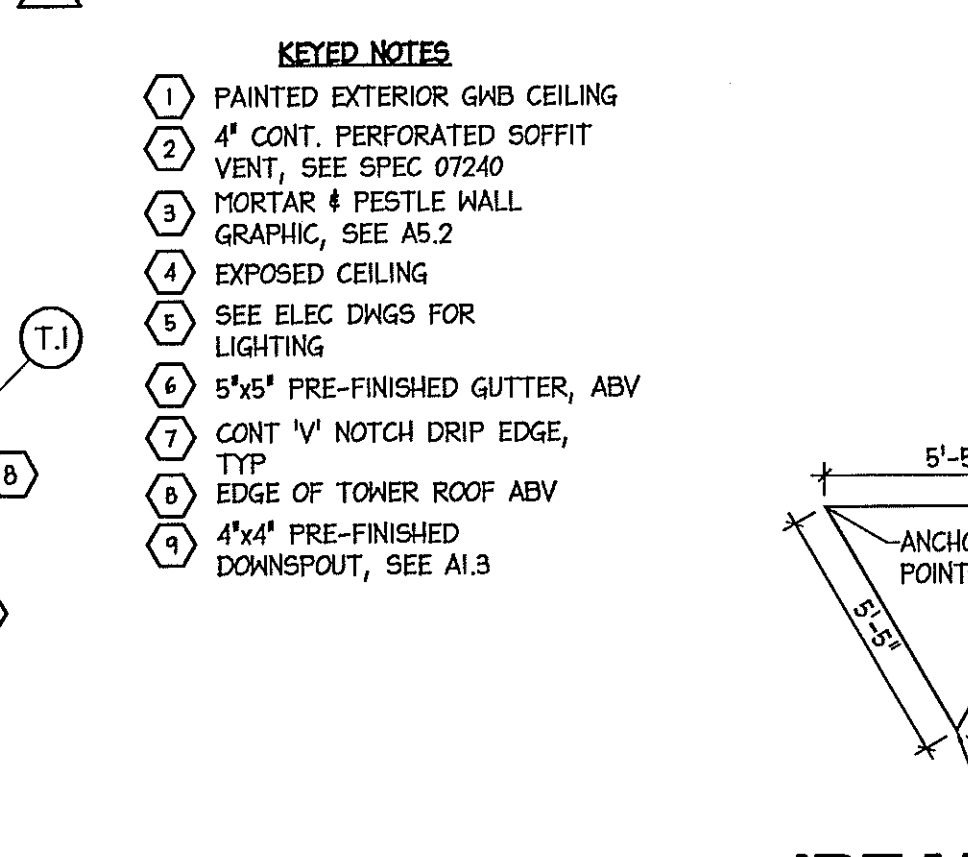
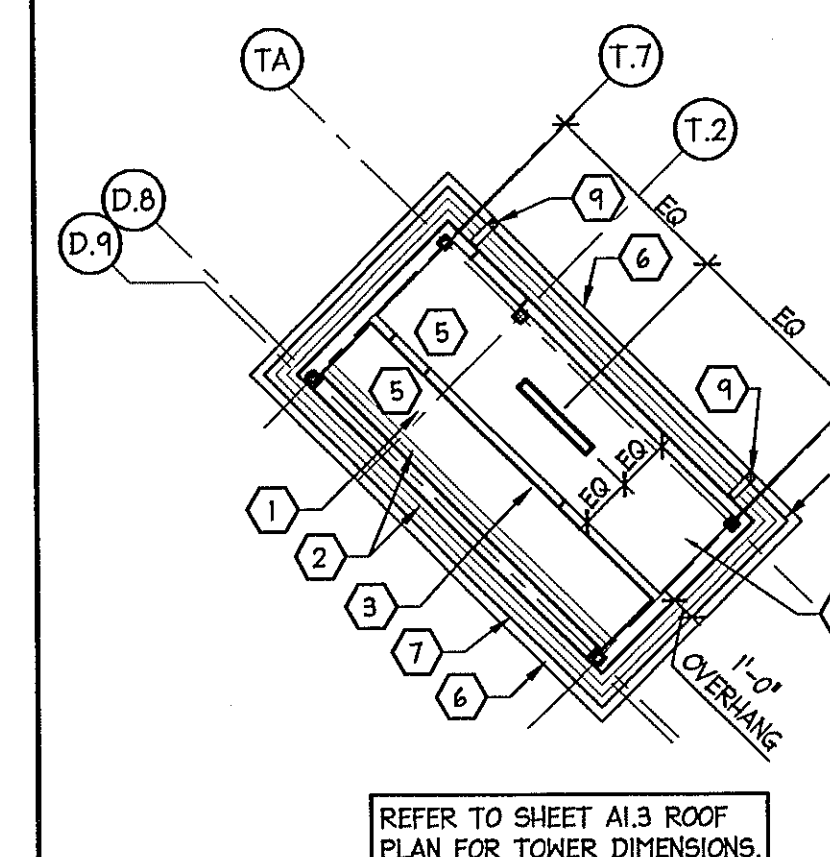
PROJECT NAME
STORE #13450 (SWC) OF FOURAKER & NORMANDY JACKSONVILLE, FLORIDA

DRAWING TITLE
REFLECTED CEILING PLAN AND NOTES

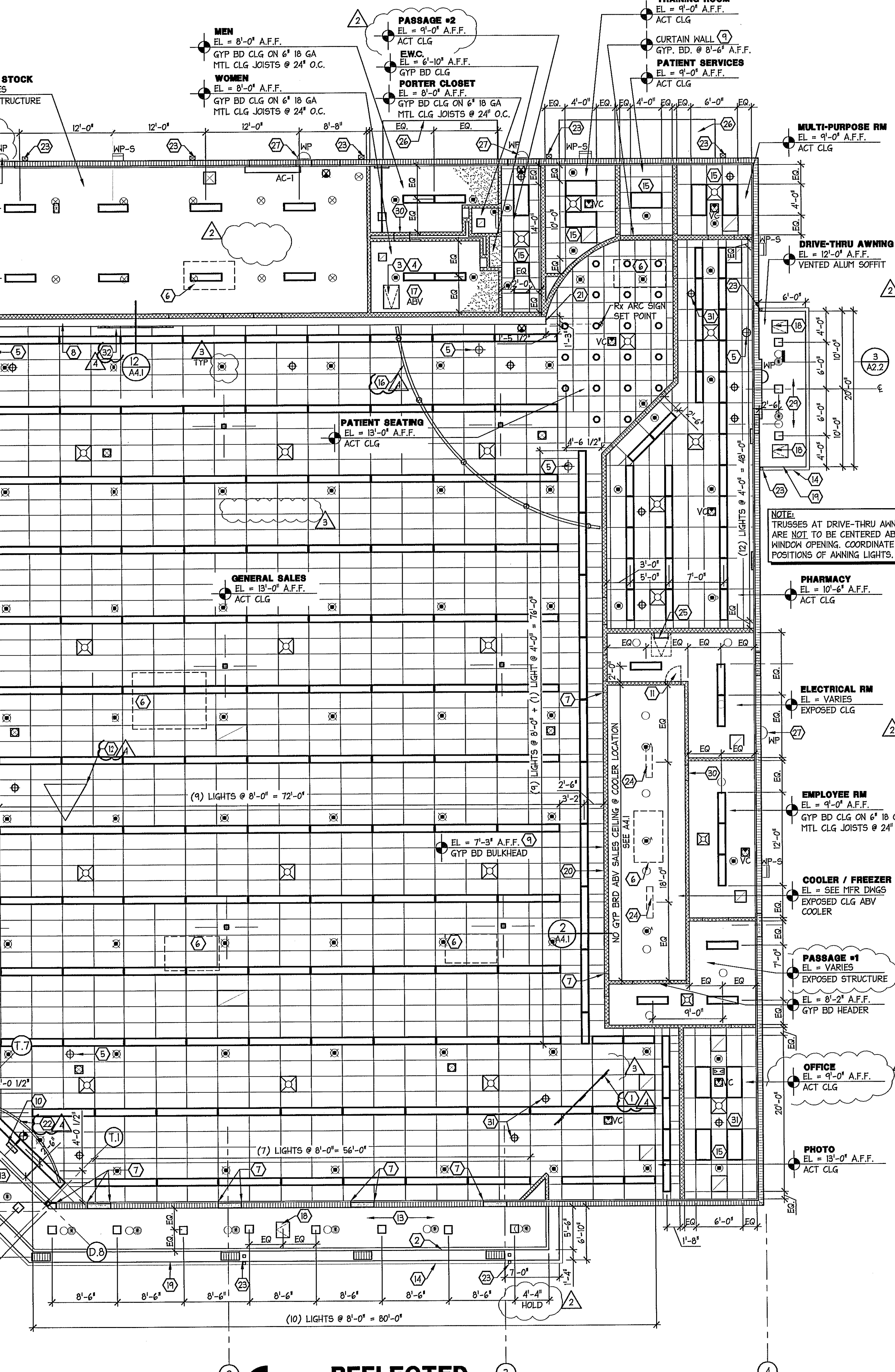
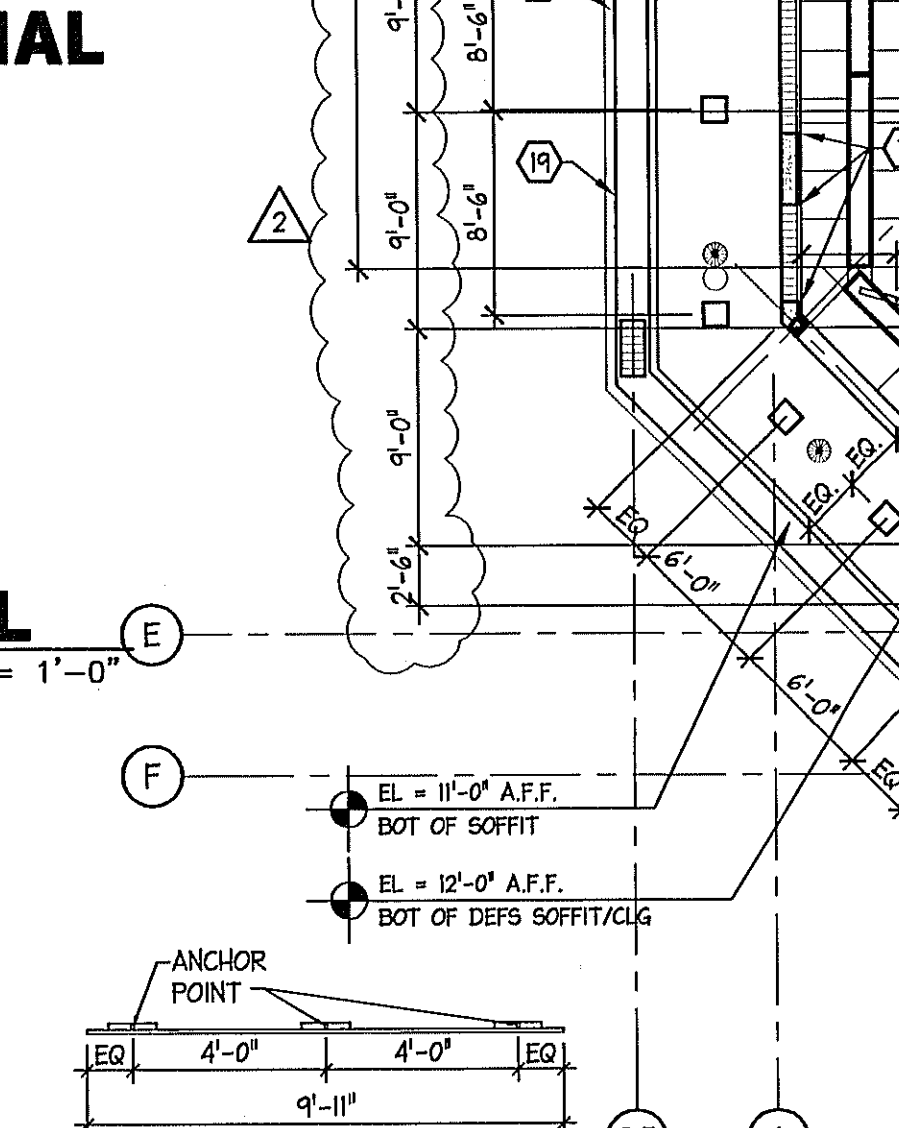
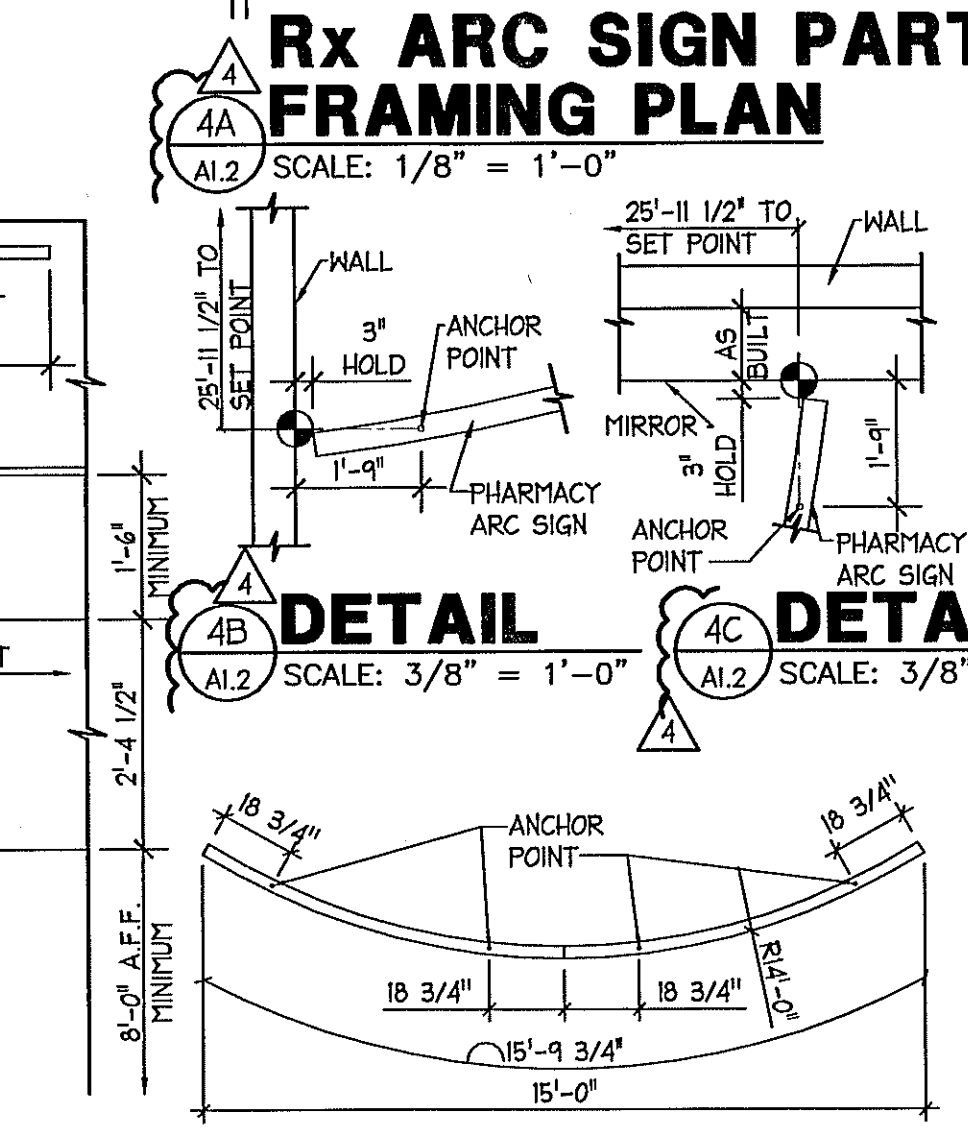
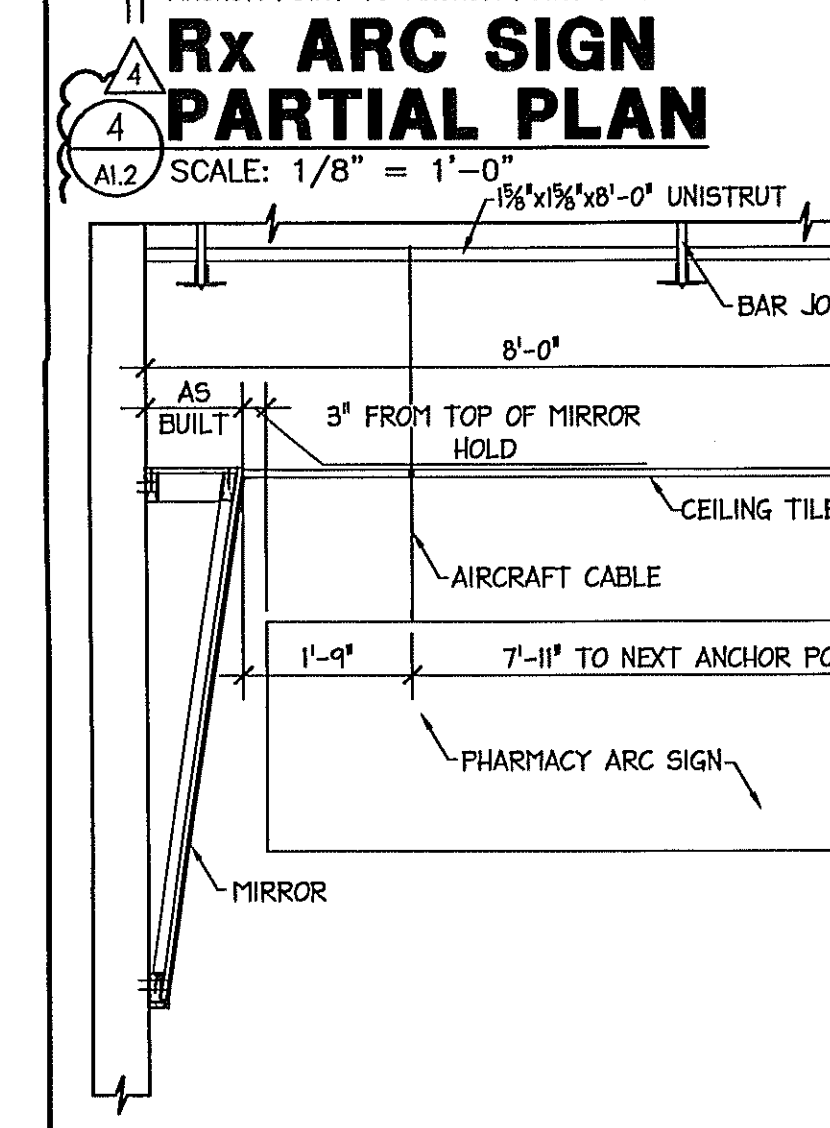
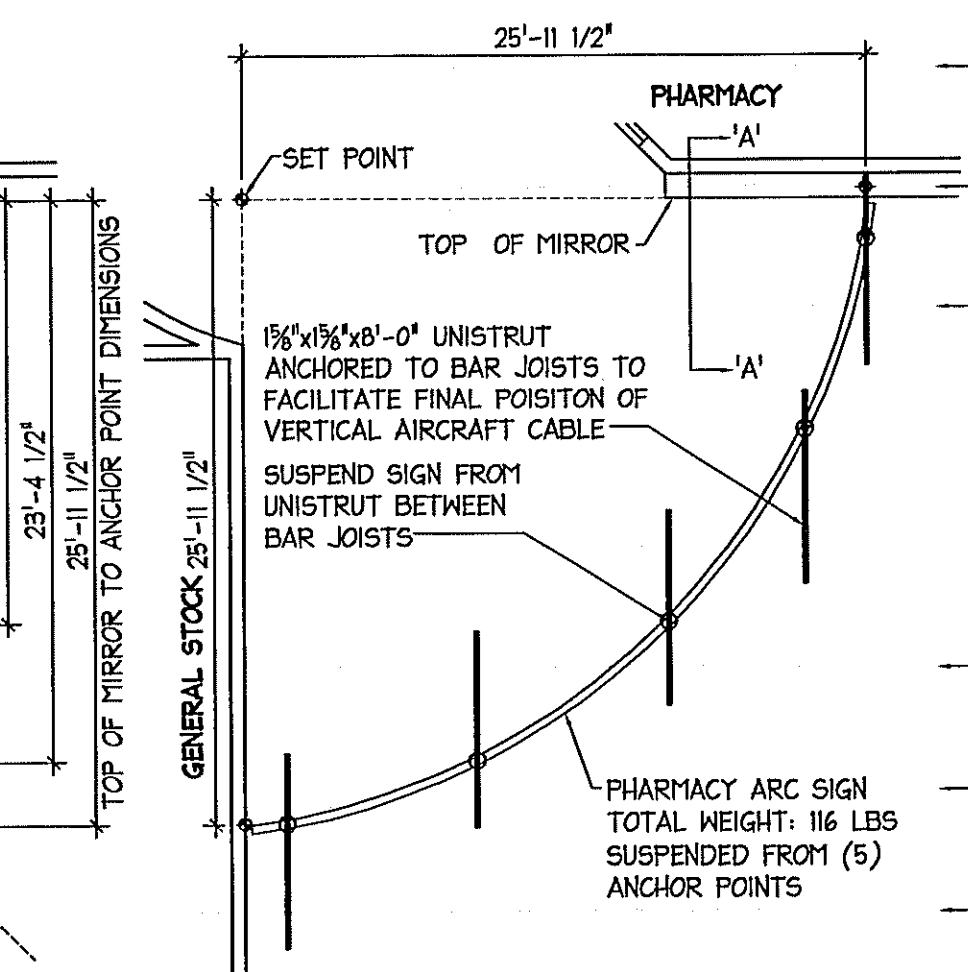
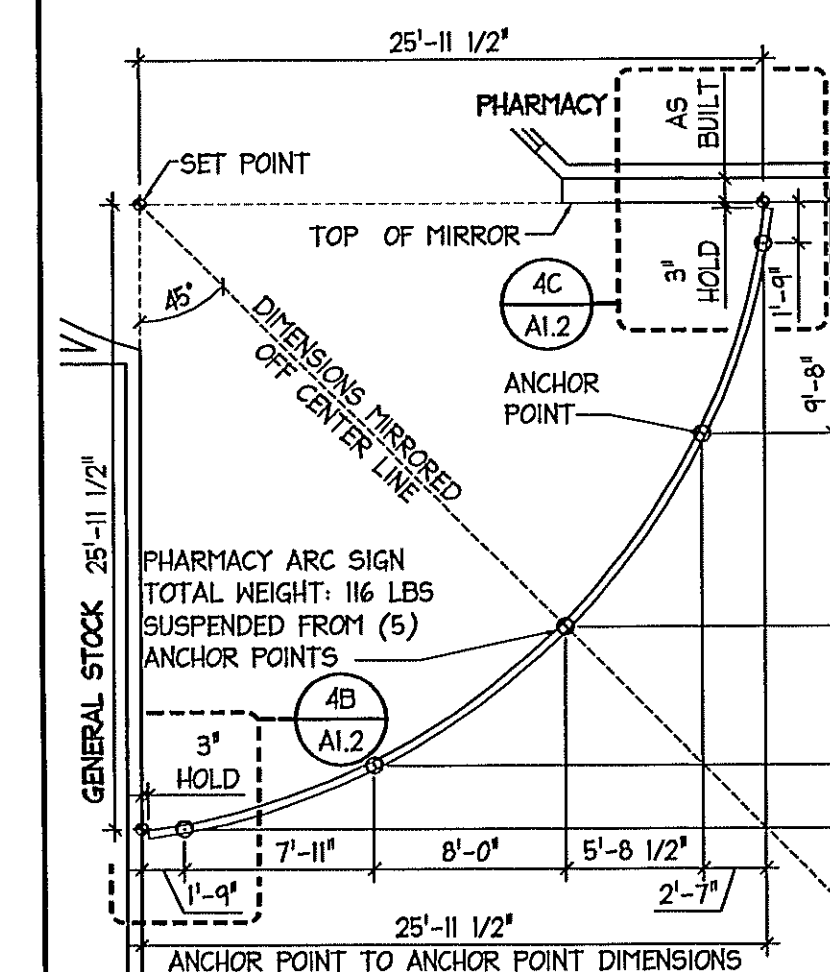
DATE:	11.30.01	WALGREENS STORE NO:	13450	DRAWING NO.	
DRAWN BY:	AB	SCALE:	AS NOTED	A1.2	FWH PROJECT NO. 0913
REVIEWED BY:	SK	RELEASED TO CONSTRUCTION:	04.05.10		

- RCP KEYED NOTES**
- PHOTO PLUS SIGN (14 LBS), CENTER SIGN ABOVE PHOTO CASH REGISTERS. SUPPORT FROM STRUCTURE ABOVE, SIMILAR TO PHARMACY ARC SIGN. SEE DETAIL 6/A1.2 FOR ANCHOR POINT LOCATIONS.
 - CONT. SOFFIT VENT, SEE SPEC 07420
 - 22"x30" ACCESS PANEL WITH KEYPAD LOCK, ORIENTATED BETWEEN TRUSS / JOISTS
 - COORD. ACCESS PANEL LOCATIONS TO NOT INTERFERE WITH TOILET PARTITIONS BELOW
 - PERSONAL VIEW MONITOR POSITIONED ON AISLE CENTERLINES.
 - ROOF MOUNTED EQUIP ABOVE. SEE SHEET A1.3, A1.4 & MECH. DWGS
 - CONTROL JOINT. SEE INT. ELEV.
 - LINE OF MIRRORS.
 - GMB SOFFIT. PROVIDE CONTROL JOINTS AS INDICATED ON PLAN & INTERIOR ELEVATIONS.
 - CENTER SUPPLY REGISTER IN CEILING TILE CLOSEST TO WINDOW CENTER
 - 24" x 36" ACCESS PANEL-SILL AT 10'-0" A.F.F. FOR ACCESS ABOVE COOLER
 - BEAUTY SIGN (10 LBS), CENTER SIGN ABOVE BEAUTY BULLPEN. SEE DETAIL 3/A1.2 FOR ANCHOR POINT LOCATIONS.
 - DIRECT APPLIED EXTERIOR FINISH SYSTEM (DEFS) OVER 5/8" GLASS BENJAMIN MOORE 'BONE WHITE'
 - 5"x5" PRE-FINISHED METAL GUTTER
 - A.C.T. GRID TO BE CENTERED IN ROOM
 - PHARMACY ARC SIGN (116 LBS). SEE 4/A1.2 FOR PLACEMENT & ANCHORING DETAILS.
 - 3/4" X 24" CDX PLYMD CATWALK IN RESTROOM CLG. ABV.
 - 20" x 24" ACCESS PANEL W/ KEYPAD LOCK.
 - LINE OF CANOPY ABOVE
 - CASED OPENING
 - MIRROR END CAP, REFER TO DTL. 14/A4.1
 - CHECKOUT ARC SIGN (26 LBS). SIGN CENTERED ON ENTRANCE SUPPORT FROM STRUCTURE ABOVE, SIMILAR TO PHARMACY ARC SIGN. SEE DETAIL 5/A1.2 FOR ANCHOR POINT LOCATIONS.
 - ROOF DOWNSPOUT, REFER TO A1.3
 - FIXTURES MOUNTED ABOVE COOLER CEILING, REFER TO ELECT
 - ROOF ACCESS LADDER, SEE A4.5.
 - TOTE ENCLOSURE ROOF, SEE DETAIL ON SHEET C6.3
 - LIGHT FIXTURE, BOTTOM MOUNTED @ 9'-0" A.F.F., SEE ELECT
 - EXHAUST PIPE FOR RADON REMOVAL SYSTEM. SEE SECTION ON A2.8 & MECH. DWGS.
 - VENTED ALUMINUM SOFFIT, COLOR: KYMAR 500 'SANDSTONE WHITE', SEE SPEC 07410.
 - 24" W x 36" H OPEN'G IN WALL @ 10'-0" A.F.F.
 - 'SECURITY CAMERA' SIGNAGE, HUNG AT THE 5' CCTV DOMES AND EXPOSED CAMERA. FURNISHED AND INSTALLED BY WALGREENS.
 - BODY & BATH SIGN (14 LBS). SEE 9/A3.1 FOR SIGN POSITION SUPPORT FROM STRUCTURE ABOVE, SIMILAR TO PHARMACY ARC SIGN. SEE DETAIL 6/A1.2 FOR ANCHOR POINT LOCATIONS.

- KEYED NOTES**
- PAINTED EXTERIOR GMB CEILING
 - 4" CONT. PERFORATED SOFFIT VENT, SEE SPEC 07240
 - MORTAR & PESTLE WALL GRAPHIC, SEE A5.2
 - EXPOSED CEILING
 - SEE ELEC DWGS FOR LIGHTING
 - 5"x5" PRE-FINISHED GUTTER, ABV
 - CONT 'V' NOTCH DRIP EDGE, TYP
 - EDGE OF TOWER ROOF ABV
 - 4"x4" PRE-FINISHED DOWNSPOUT, SEE A1.3



TOWER REFLECTED CEILING PLAN
 SCALE: 1/8" = 1'-0"



DATE: 11.30.01
 DRAWN BY: AB
 REVIEWED BY: SK

WALGREENS STORE NO: 13450
 SCALE: AS NOTED
 RELEASED TO CONSTRUCTION: 04.05.10

DRAWING NO. A1.2
 FWH PROJECT NO. 0913