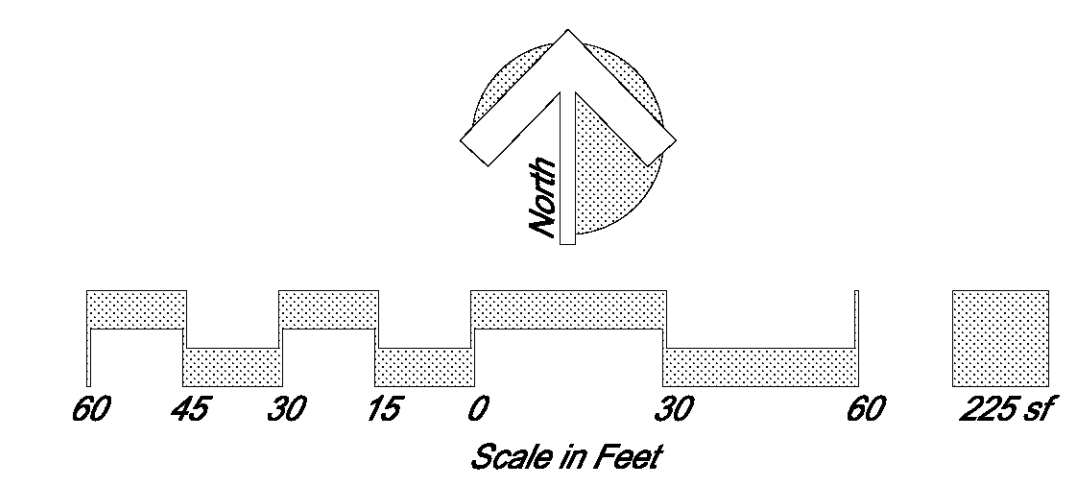


NOTE:  
ALL PROTECTED TREES SHALL RECEIVE APPROPRIATE TREE PROTECTION THROUGHOUT CONSTRUCTION. SEE EROSION AND SEDIMENT CONTROL DETAILS FOR TREE PROTECTION BARRIER DETAILS.



LEGEND

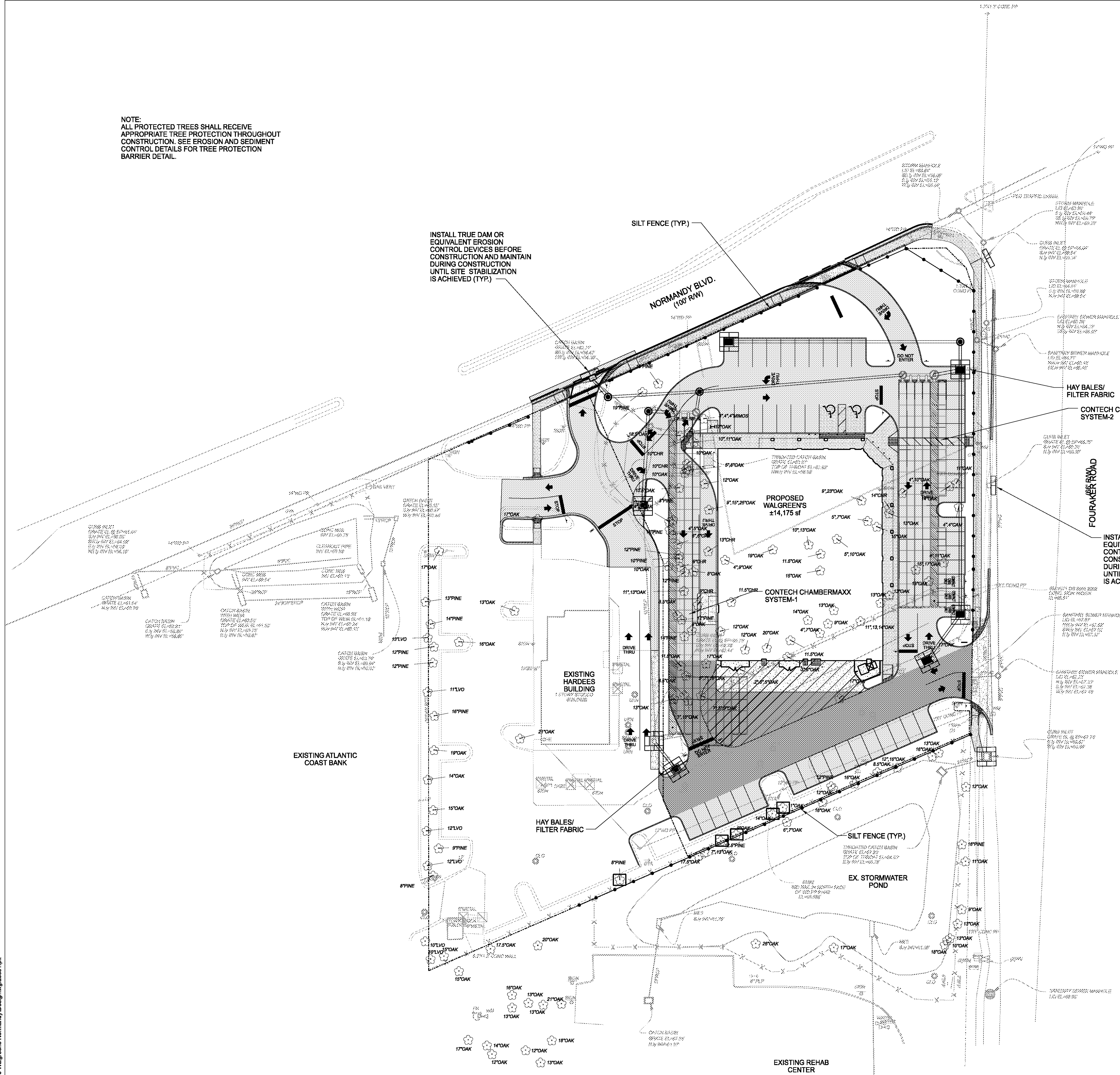
- = TREES TO REMAIN / TREE BARRICADE
- = SILT FENCE
- = INLET PROTECTION

CONSUMPTIVE USE PERMIT (CUP) NOTE:

DEWATERING WILL REMAIN BELOW THE THRESHOLD REQUIREMENTS FOR A CUP. IF IT IS DETERMINED THAT PUMPING & DEWATER WILL EXCEED THE CUP THRESHOLD REQUIREMENTS A CUP WILL BE APPLIED FOR THROUGH THE ST JOHNS RIVER WATER MANAGEMENT DISTRICT (SRJWMD) AT THAT TIME.

1. THIS EROSION AND SEDIMENT CONTROL PLAN SHOWS THE MINIMUM CONTROLS NEEDED. THE CONTRACTOR IS RESPONSIBLE FOR, AND MAY NEED TO INSTALL, ADDITIONAL EROSION AND SEDIMENT CONTROL DEVICES TO MEET LOCAL, STATE AND FEDERAL REQUIREMENTS.
  2. CONTRACTOR SHALL AT A MINIMUM IMPLEMENT THE ENGINEER'S REQUIREMENTS OUTLINED BELOW AND THOSE MEASURES SHOWN ON THE EROSION AND TURBIDITY CONTROL PLAN. IN ADDITION THE CONTRACTOR SHALL UNDERTAKE ADDITIONAL MEASURES REQUIRED TO BE IN COMPLIANCE WITH APPLICABLE PERMIT CONDITIONS AND STATE WATER QUALITY STANDARDS. DEPENDING ON THE NATURE OF MATERIALS AND METHODS OF CONSTRUCTION THE CONTRACTOR MAY BE REQUIRED TO ADD FLOCCULANTS TO THE RETENTION SYSTEM PRIOR TO PLACING THE SYSTEM INTO OPERATION.
  3. THE SITE CONTRACTOR IS RESPONSIBLE FOR REMOVING THE TEMPORARY EROSION AND SEDIMENT CONTROL DEVICES AFTER COMPLETION OF CONSTRUCTION AND ONLY WHEN AREAS HAVE BEEN STABILIZED.
  4. THE CONTRACTOR IS RESPONSIBLE FOR THE REMOVAL OF ANY SEDIMENT THAT LEAVES THE SITE.
  5. THE CONTRACTOR SHALL PAY FOR ANY WATER QUALITY CONTROL VIOLATIONS FROM ANY AGENCY THAT RESULTS IN FINES BEING ASSESSED TO THE OWNER BECAUSE OF THE CONTRACTOR'S FAILURE TO ELIMINATE TURBID RUNOFF FROM LEAVING THE SITE AND RAISING BACKGROUND LEVELS.
  6. WITHIN 48 HOURS PRIOR TO THE START OF CONSTRUCTION, THE CONTRACTOR IS RESPONSIBLE FOR PREPARING AND SUBMITTING THE APPLICATION FORM ENTITLED "NPDES STORMWATER NOTICE OF INTENT TO USE MULTI-SECTOR GENERIC PERMIT FOR STORMWATER DISCHARGE FROM LARGE AND SMALL CONSTRUCTION ACTIVITIES" (FDEP FORM 62-621.300(4)(B), EFFECTIVE MAY 1, 2003). THE CONTRACTOR IS ALSO RESPONSIBLE FOR PREPARING AND CONTINUALLY MAINTAINING A STORMWATER POLLUTION PREVENTION PLAN (SWPP).
  7. PRIOR TO THE END OF CONSTRUCTION, THE CONTRACTOR IS RESPONSIBLE FOR PREPARING AND SUBMITTING THE APPLICATION FOR ENTITLED "NPDES STORMWATER NOTICE OF TERMINATION (FDEP FORM 62-621.300(6), EFFECTIVE APRIL 20, 2005).
- ALL COMPLETED FORMS MUST BE SUBMITTED TO:
- NPDES STORMWATER NOTICES CENTER, MS #2510  
FLORIDA DEPARTMENT OF ENVIRONMENTAL PROTECTION  
2800 BLAIR STONE ROAD, TALLAHASSEE, FLORIDA 32399-2400

8. SEE EROSION AND SEDIMENT CONTROL DETAILS & STORM WATER POLLUTION PREVENTION PLAN SHEET NO. 12 FOR ADDITIONAL EROSION AND SEDIMENT CONTROL REQUIREMENTS.



REVISIONS

No.	Date	Description	Per Walgreens Review Comments	Initials
1	02/05/2010			

DO NOT SCALE THIS DRAWING - DIMENSIONS AND NOTES TAKE PREFERENCE

EROSION AND SEDIMENT CONTROL PLAN

Walgreens

Jacksonville, Florida

SWC Fouraker Rd & Normandy Blvd

Store No. 13450

TAYLOR & WHITE, INC.

Consulting and Design Engineers

8936 Western Way, Suite 100 - Jacksonville, Florida 32255

Tel. (904) 346-0071 - Fax (904) 346-3051 - Toll Free (877) 426-4440

www.taylorandwhite.com

Scale: 1"=30'

Project Manager: DGT

Designer: AA

Drawn by: AA

Certificate of Authorization: 7298

Key Map

Project No.: 08140.07

Date: November 2008

Sheet No.: C1.5