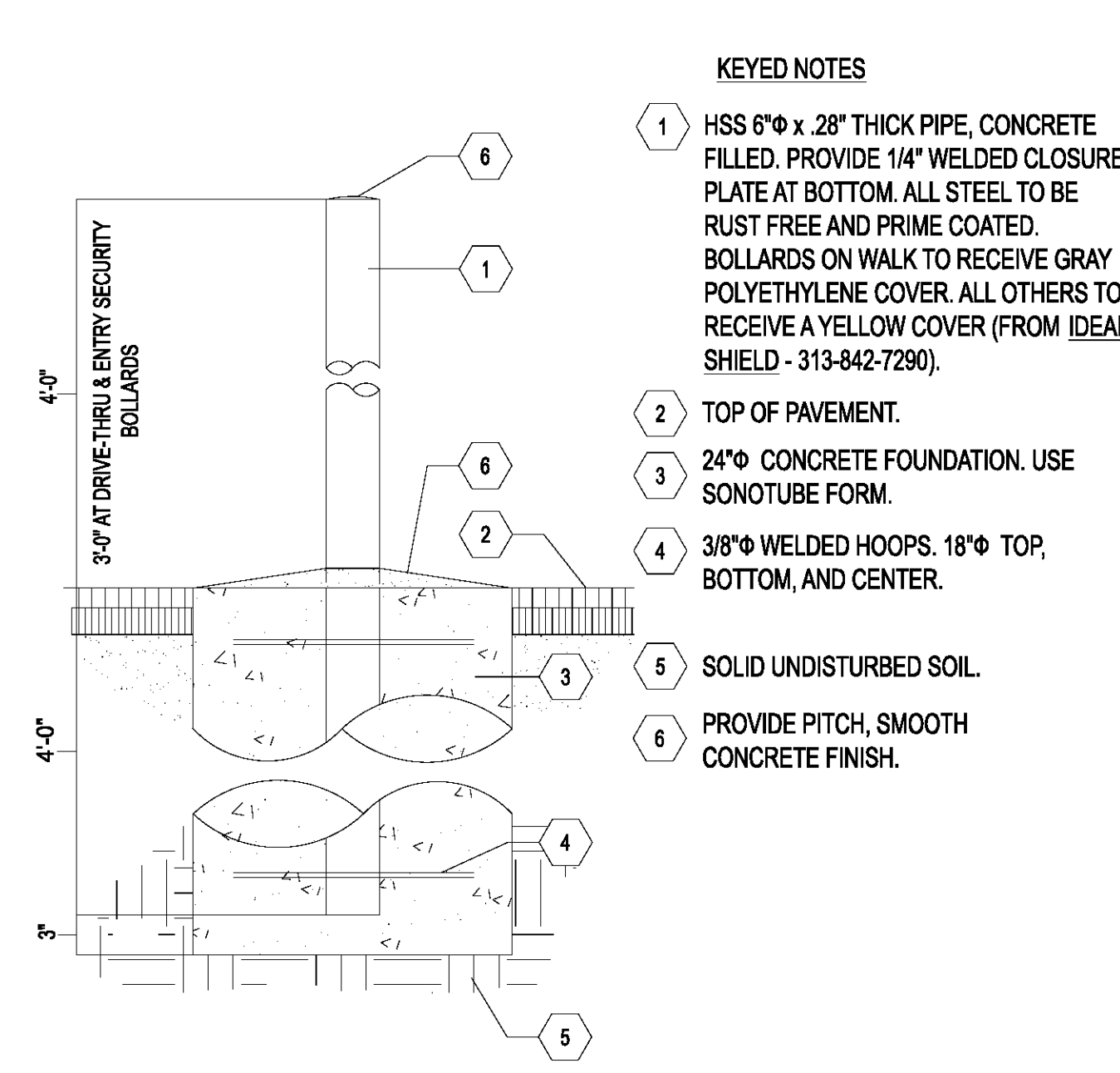


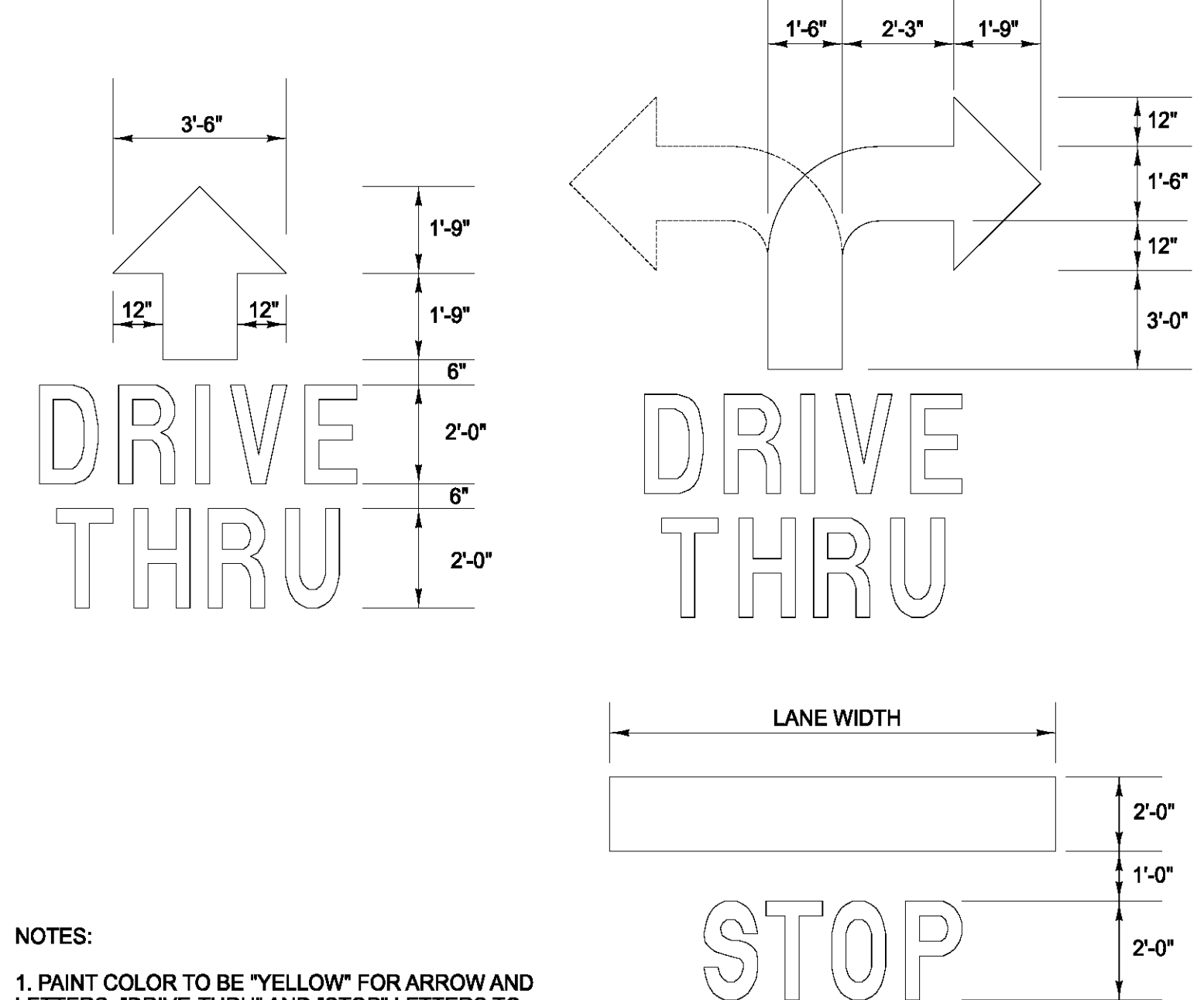
- KEYED NOTES**
- ① 1 1/2" WEARING SURFACE OVER TACK COAT, ASPHALTIC CONCRETE TYPE S-1 1500 LB MARSHALL
 - ② 2" BINDER COURSE OVER PRIME COAT
 - ③ 8" (MIN.) CLEAN, GRADED AND COMPACTED STONE (NO SLAG)
 - ④ MIN. 12" WELL-DRAINED SUB-GRADE (SUB-GRADE TO MODIFIED 95 PROCTOR MIN. COMPACTION)
 - ⑤ 8" CLEAN, GRADED & COMPACTED STONE BASE (NO SLAG)
 - ⑥ 2" WEARING SURFACE OVER TACK COAT, ASPHALTIC CONCRETE TYPE S-1 1500 LB MARSHALL

NOTES:

- SOIL ANALYSIS MAY INDICATE THE NEED FOR A THICKER BASE COURSE THOSE SHOWN HEREIN. THE PAVEMENT THICKNESS SHOWN HEREIN ARE NOT INTENDED TO BE ABSOLUTE, BUT ARE PRELIMINARY CRITERIA & MAY BE MODIFIED TO ACCOMMODATE THE BEARING CAPACITIES OF VARIOUS SUBGRADES.
- ALL DISTURBED AREAS SHALL BE SEED & MULCHED. ALL AREAS WHERE SOD HAS BEEN DISTURBED OR REMOVED SHALL BE SODDED TO SATISFACTION OF OWNER.
- THE OWNER, PROJECT ENGINEER, AND GEOTECHNICAL ENGINEER MUST BE NOTIFIED FORTY-EIGHT (48) HOURS IN ADVANCE OF PAVING IN ORDER TO HAVE SUFFICIENT TIME TO INSPECT THE LIMEROCK BASE AND ALL DENSITY TESTS. ANY DEFICIENCIES TO THE LIMEROCK BASE MUST BE CORRECTED PRIOR TO PAVING TO THE SATISFACTION OF THE OWNER, PROJECT ENGINEER AND GEOTECHNICAL ENGINEER. ADDITIONAL DENSITY TESTING MAY BE REQUIRED.
- ALL CURB AND GUTTER (MIAMI, CONCRETE OR ASPHALT VALLEY ETC.) SHALL HAVE A MINIMUM FALL OF 0.3' IN 100 L.F.

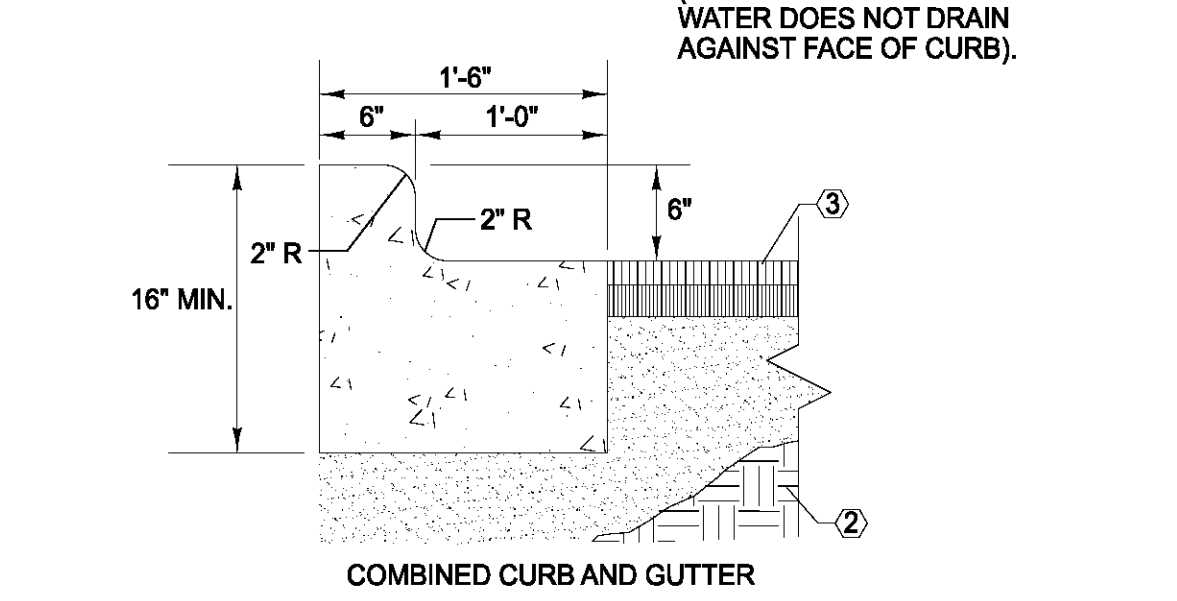
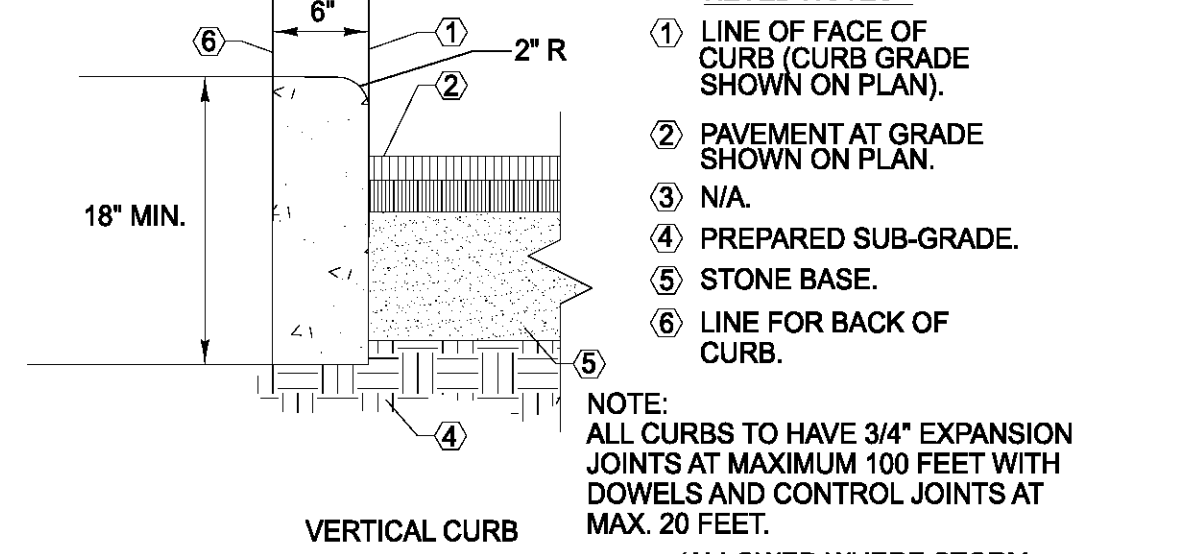


- KEYED NOTES**
- ① HSS 6" x .28" THICK PIPE, CONCRETE FILLED. PROVIDE 1/4" WELDED CLOSURE PLATE AT BOTTOM. ALL STEEL TO BE RUST FREE AND PRIME COATED. BOLLARDS ON WALK TO RECEIVE GRAY POLYETHYLENE COVER. ALL OTHERS TO RECEIVE A YELLOW COVER (FROM IDEAL SHIELD - 313-842-7290).
 - ② TOP OF PAVEMENT.
 - ③ 24" CONCRETE FOUNDATION. USE SONOTUBE FORM.
 - ④ 3/8" WELDED HOOPS. 18" TOP, BOTTOM, AND CENTER.
 - ⑤ SOLID UNDISTURBED SOIL.
 - ⑥ PROVIDE PITCH, SMOOTH CONCRETE FINISH.



NOTES:

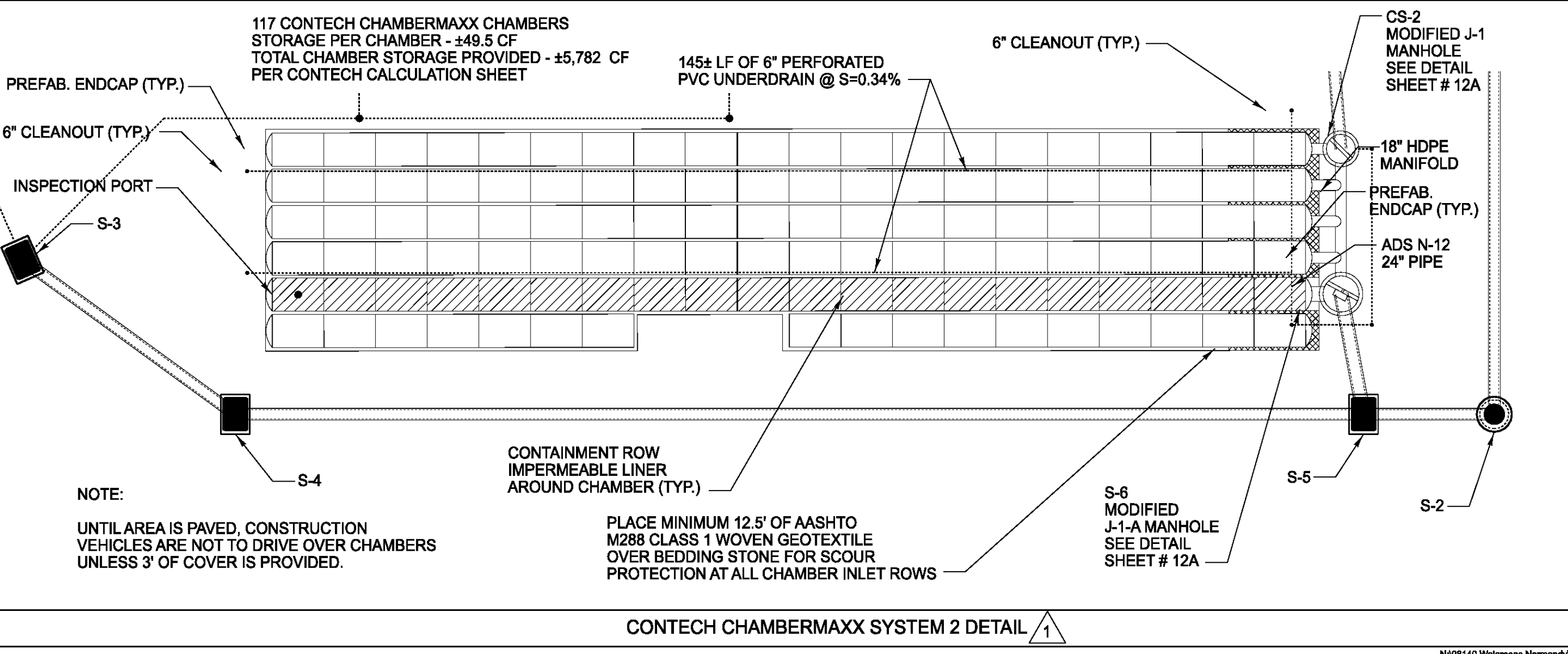
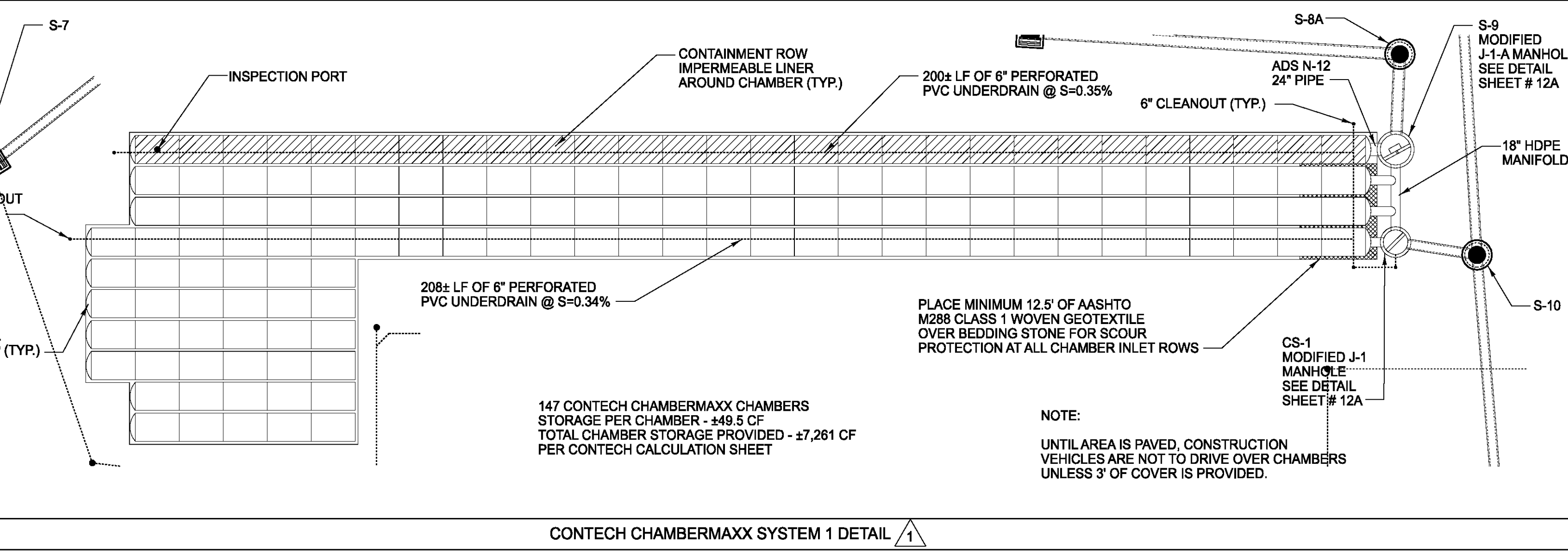
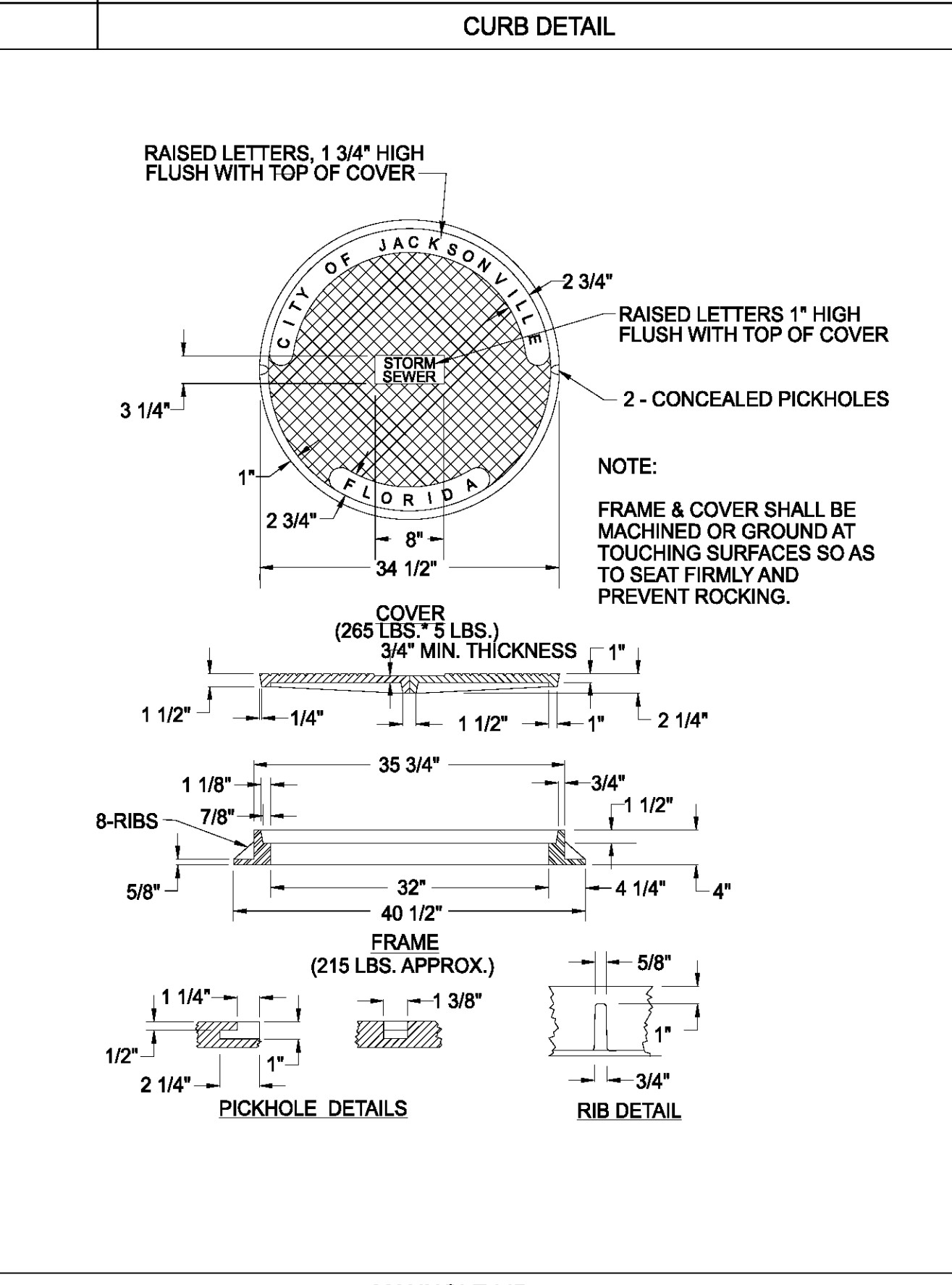
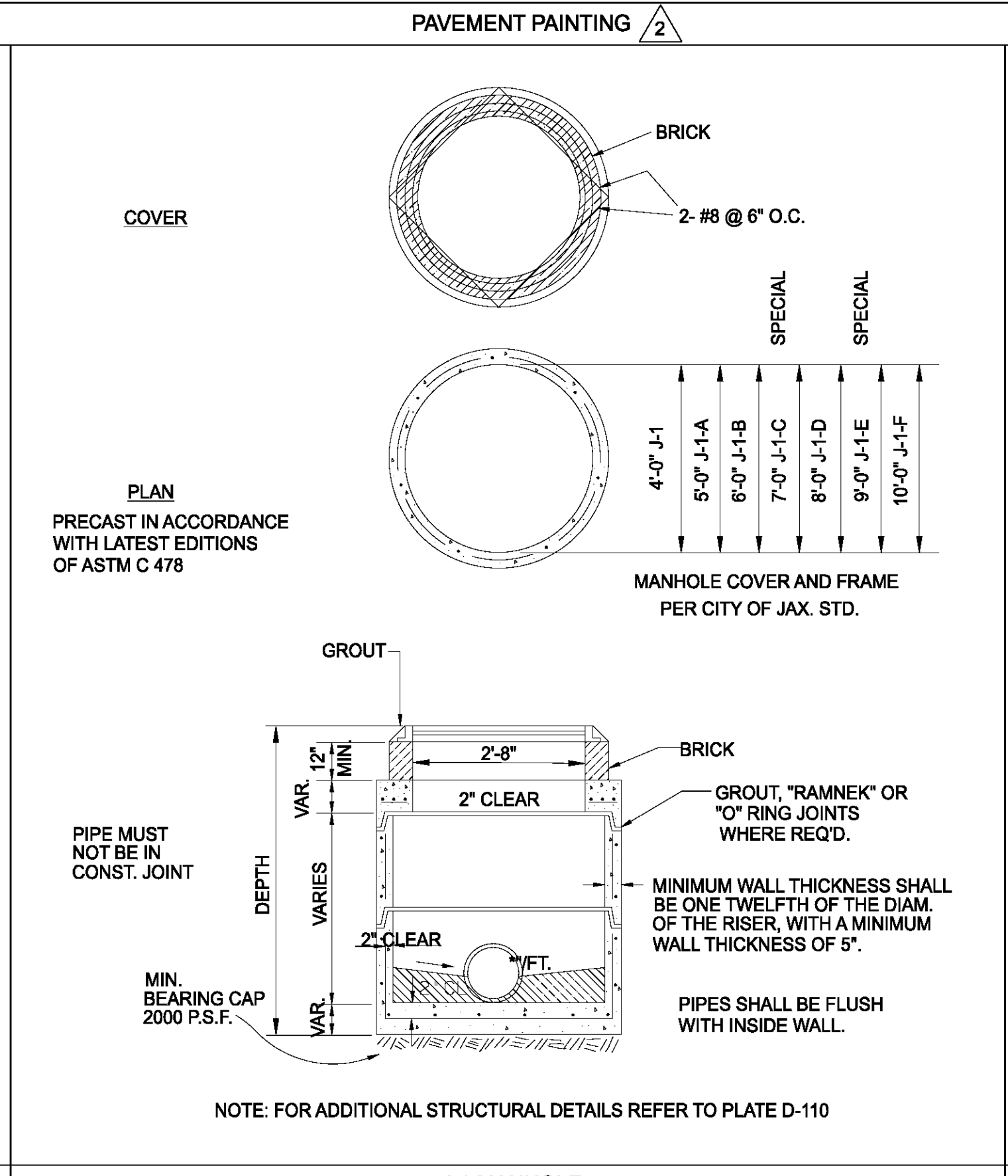
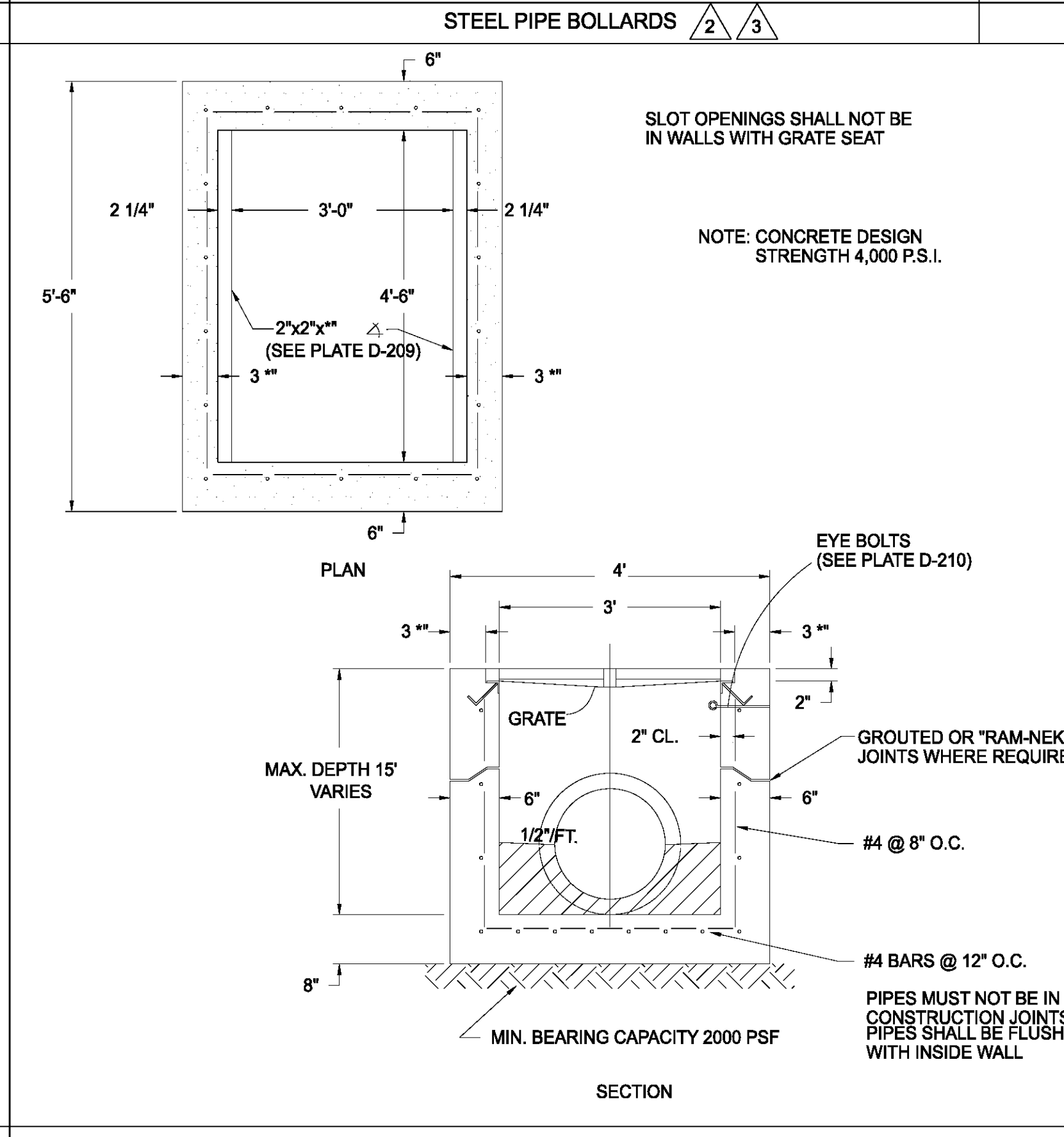
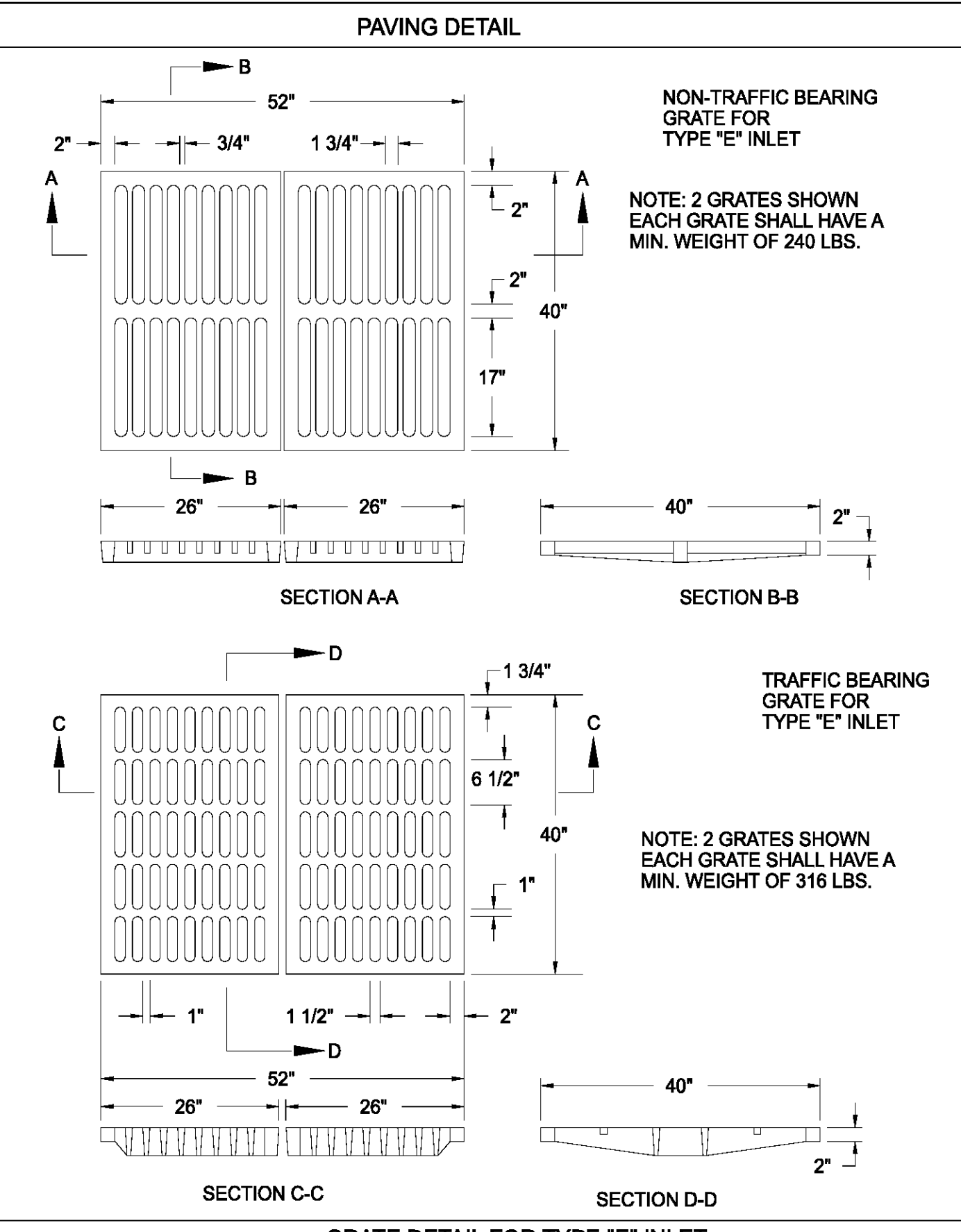
- PAINT COLOR TO BE "YELLOW" FOR ARROW AND LETTERS. "DRIVE-THRU" AND "STOP" LETTERS TO BE ELONGATED HELEVETICA MEDIUM - 4" WIDE STROKES.



KEYED NOTES

- ① N/A
- ② PREPARED SUB-GRADE.
- ③ PAVEMENT.

NOTE: ALL CURBS TO HAVE 1/4" EXPANSION JOINTS AT MAXIMUM 100 FEET WITH DOWELS AND CONTROL JOINTS AT MAX. 20 FEET. (ALLOWED WHERE STORM WATER DOES NOT DRAIN AGAINST FACE OF CURB).



Professional Engineer

No.	Description	Date	Revised/Added Details	By	Checked	Initials
3	02/05/2010 Pro Walgreens Review Comments					
2	11/16/2009 Revised per Walgreens Architect					
1	08/06/2009 Revised/Added Details					

REVISIONS

PAVING, CURBING AND DRAINAGE DETAILS

Taylor & White, Inc.
 Consulting and Design Engineers
 Jacksonville, Florida
 SWC Fournaker Rd & Normandy Blvd
 Store No. 13450

Taylor & White, Inc.
 Consulting and Design Engineers
 8936 Meridian Way, Suite 100 - Jacksonville, Florida 32255
 Tel. (904) 346-0071 - Fax (904) 346-3051 - Toll Free (877) 426-4440
 www.taylorandwhite.com

Scale:	N.T.S.
Project Manager:	DGT
Designer:	AA
Drawn by:	AA
Certificate of Authorization:	7298
Key Map	

Project No.: 08140.07
 Date: November 2008
 Sheet No.: C2.4

NOT RELEASED FOR CONSTRUCTION