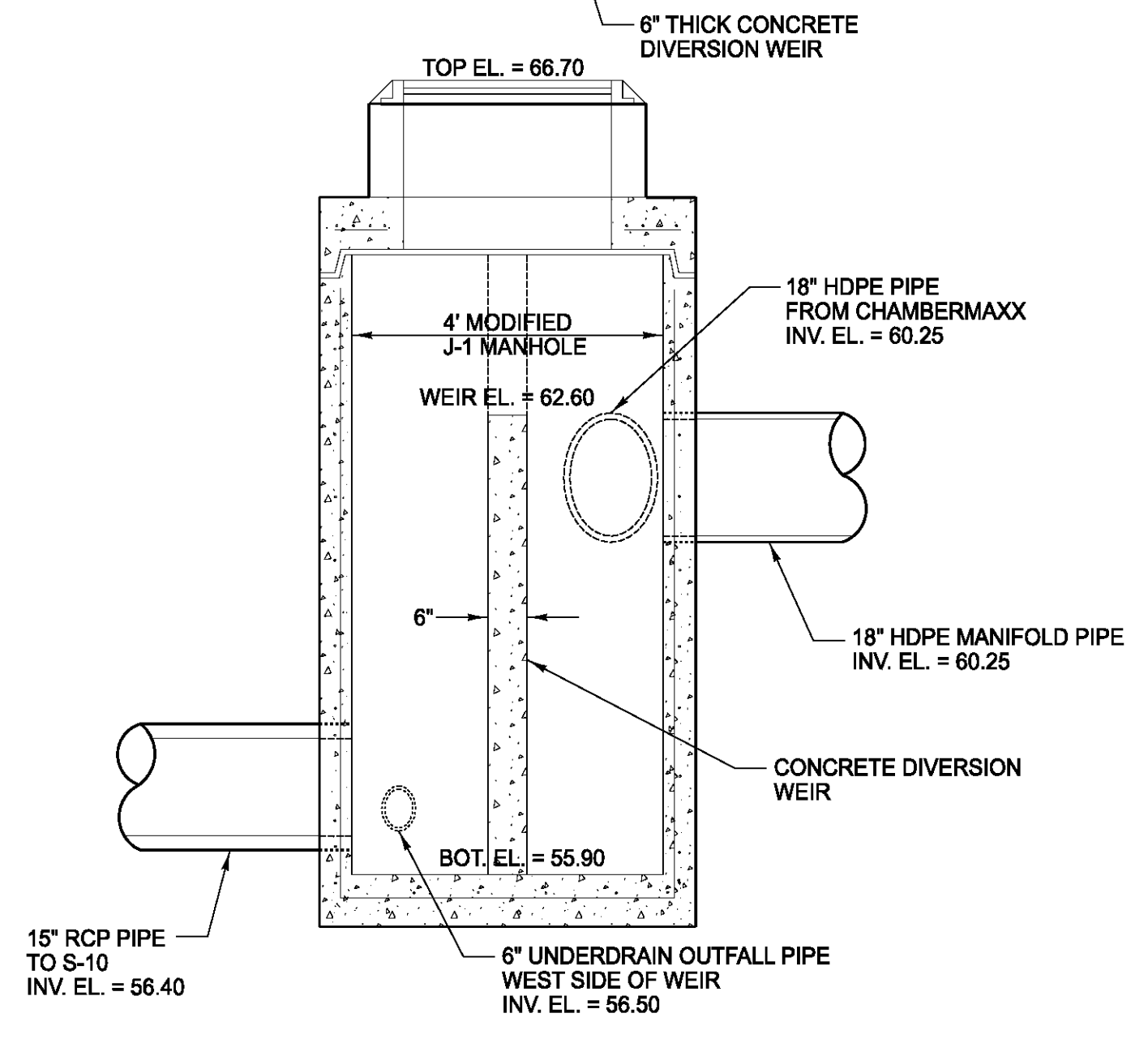
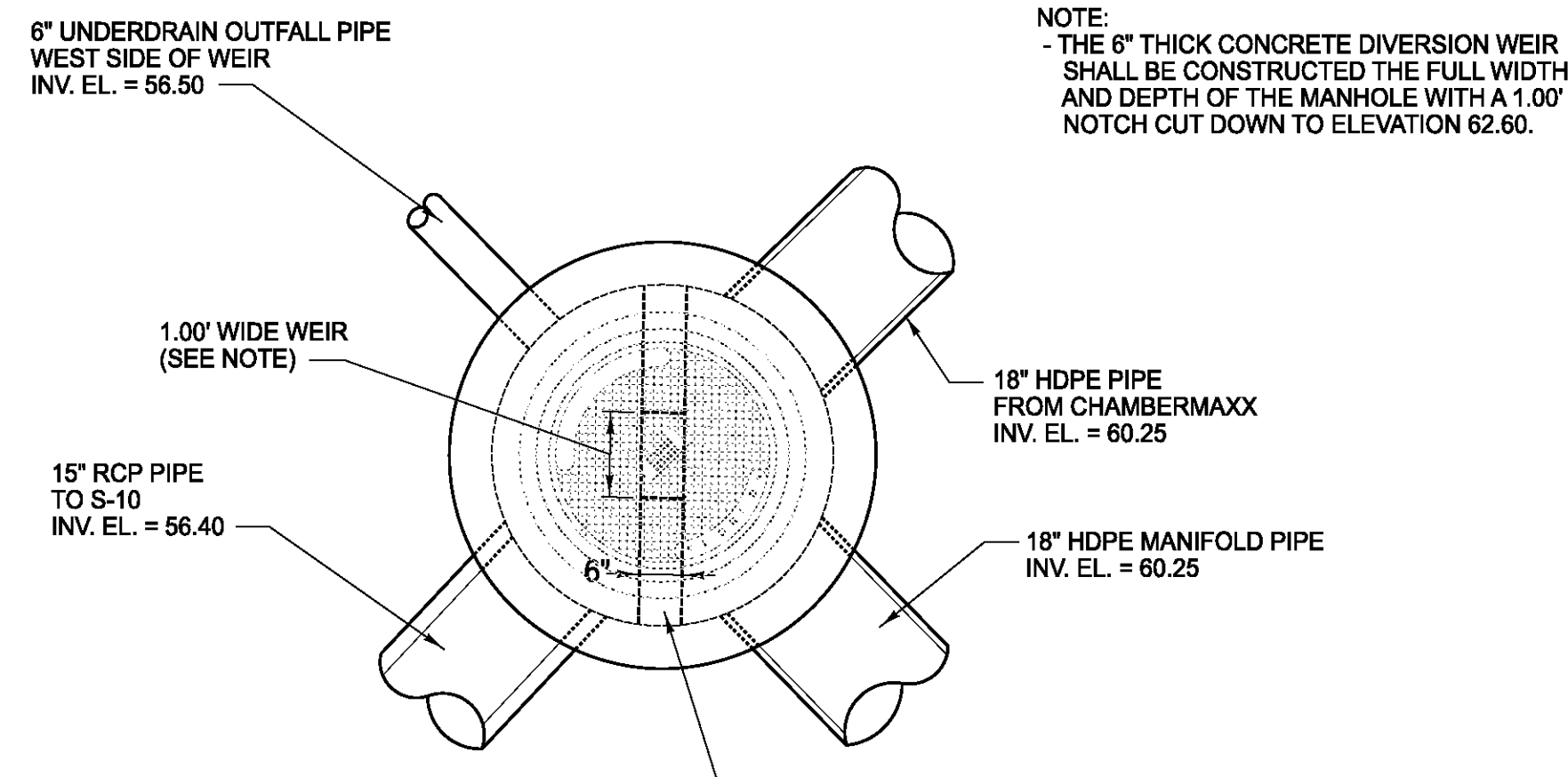
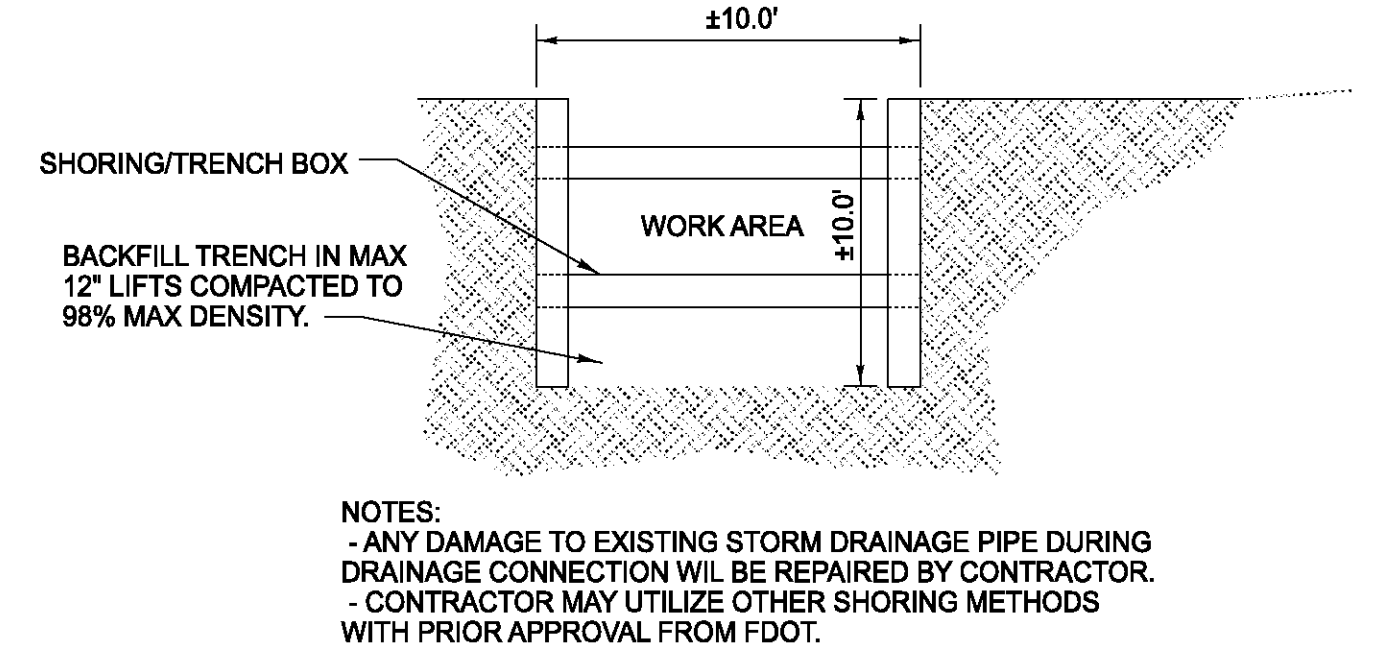


S-6 MODIFIED J-1-A DIVERSION MANHOLE

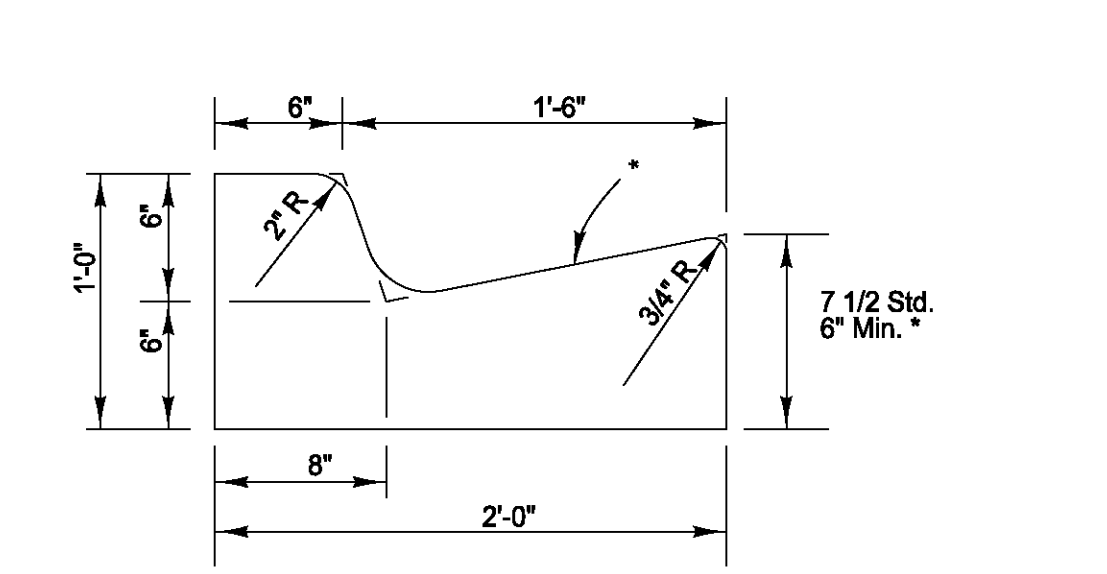


CS-2 MODIFIED J-1 DIVERSION MANHOLE

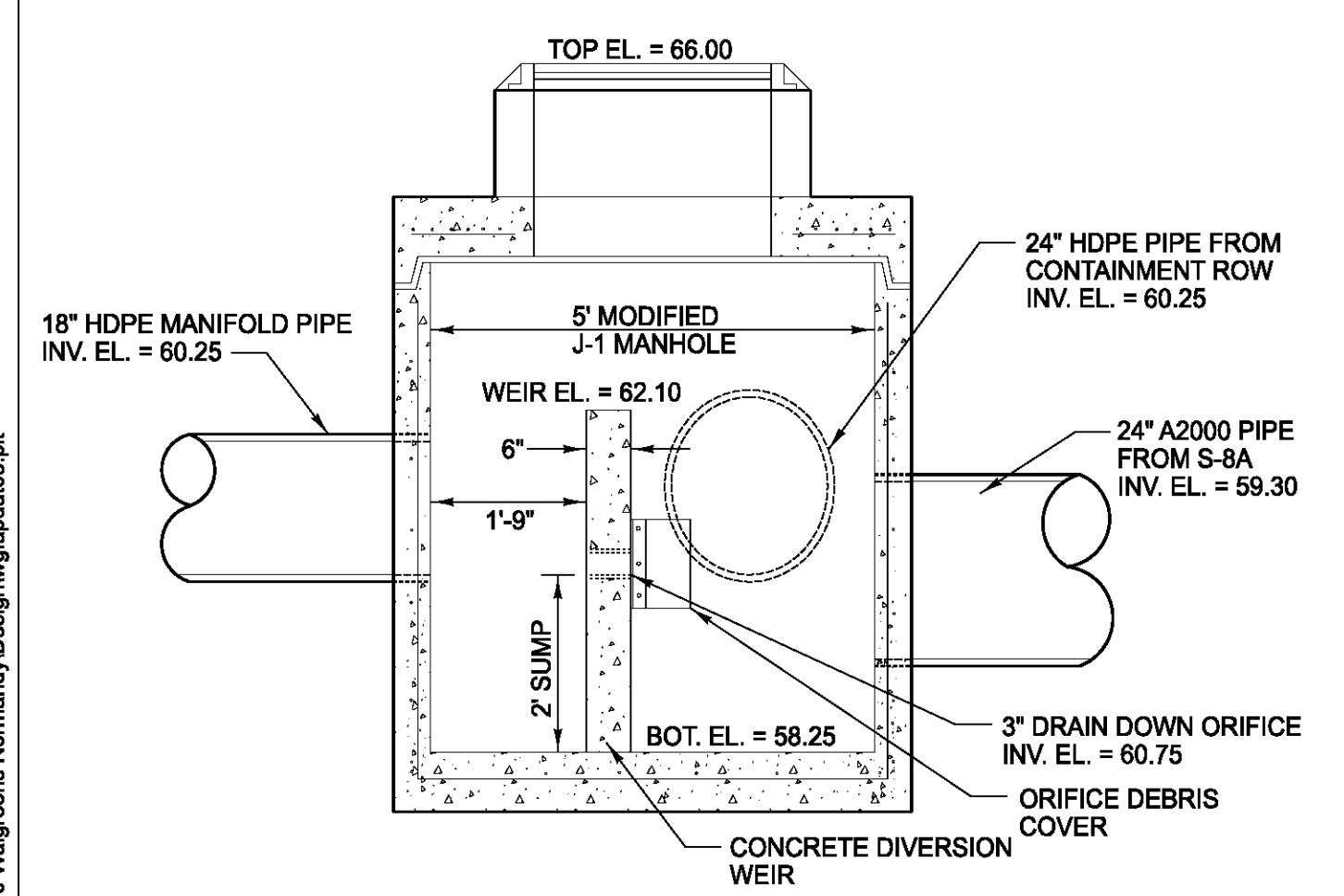
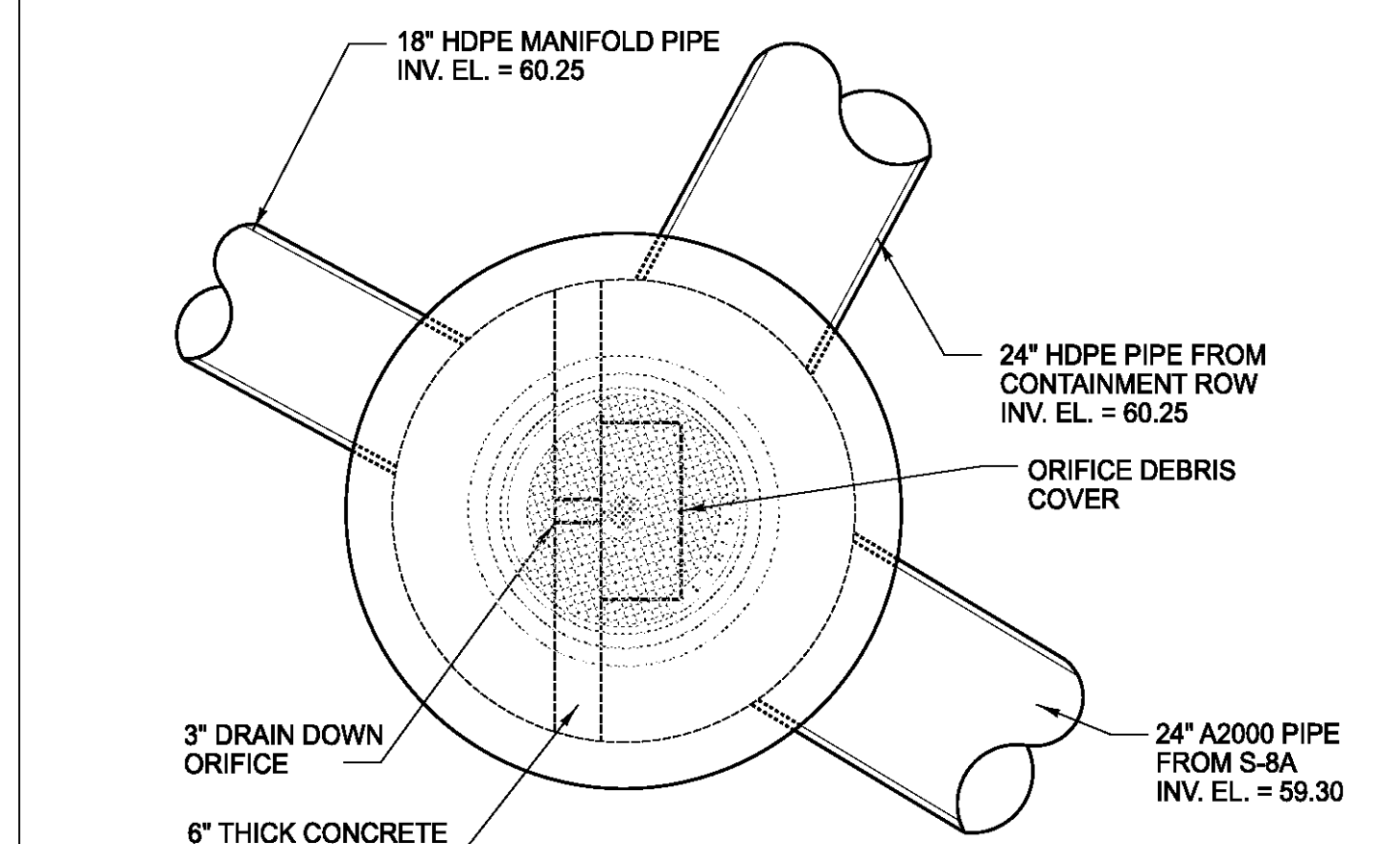
NOTE:
- THE 6" THICK CONCRETE DIVERSION WEIR SHALL BE CONSTRUCTED THE FULL WIDTH AND DEPTH OF THE MANHOLE WITH A 1.00' NOTCH CUT DOWN TO ELEVATION 62.60.



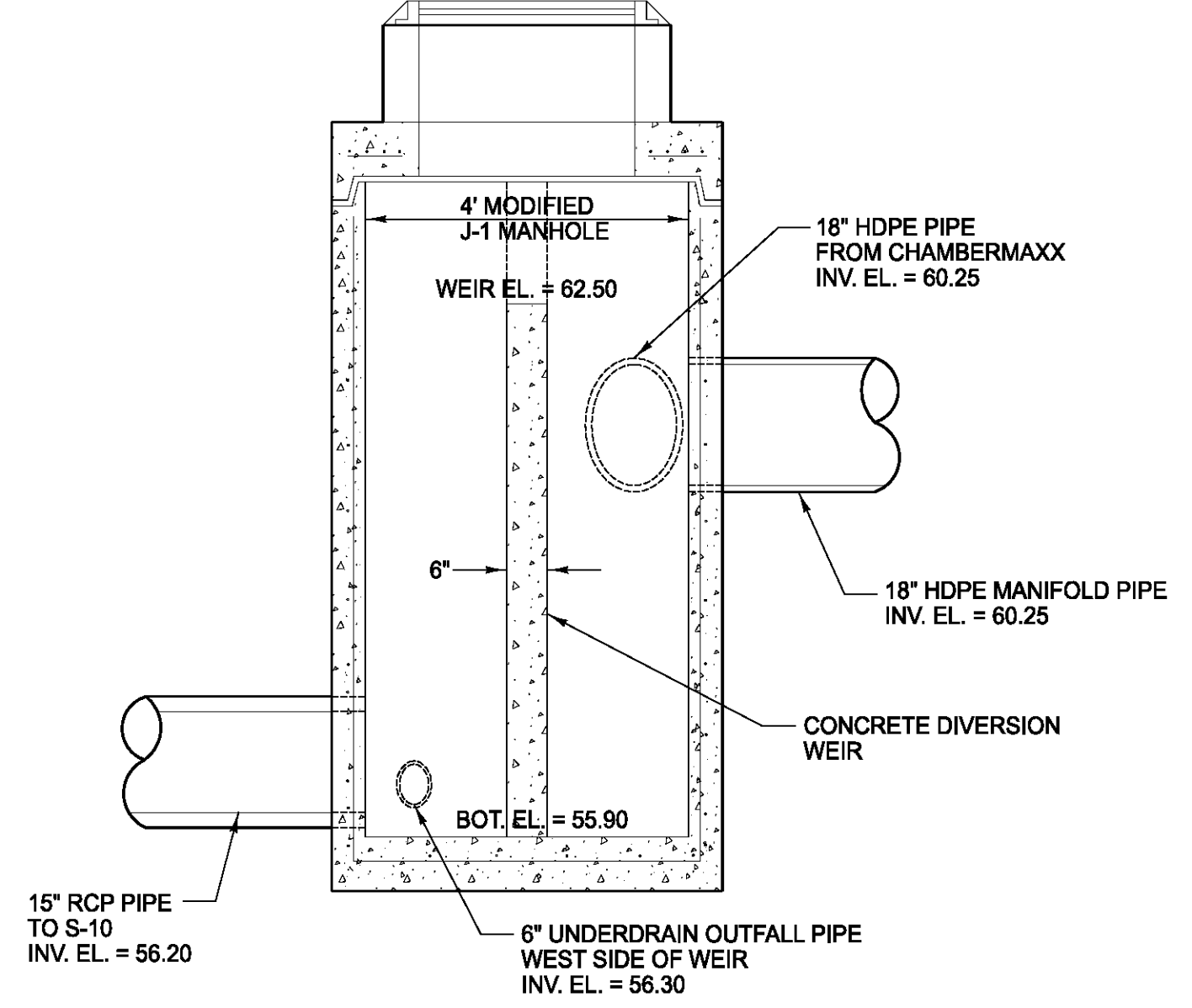
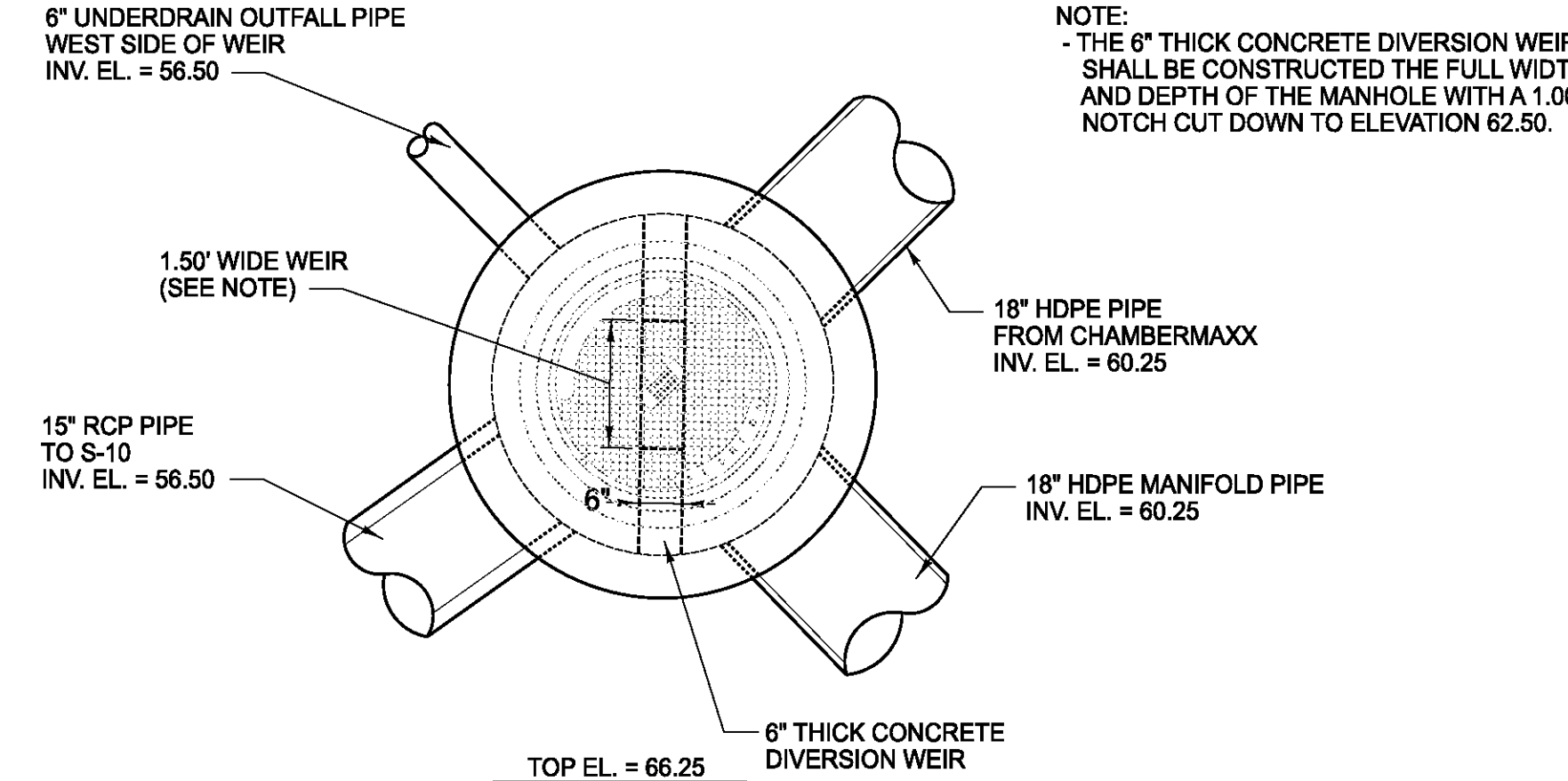
TRENCHING/SHORING DETAIL



FDOT TYPE "F" CURB AND GUTTER (FOR USE IN FDOT RW ONLY)



S-9 MODIFIED J-1-A DIVERSION MANHOLE



CS-1 MODIFIED J-1 DIVERSION MANHOLE

NOTE:
- THE 6" THICK CONCRETE DIVERSION WEIR SHALL BE CONSTRUCTED THE FULL WIDTH AND DEPTH OF THE MANHOLE WITH A 1.00' NOTCH CUT DOWN TO ELEVATION 62.50.

GENERAL NOTES

1. This detail is suitable for edge drains, gutters, or other drains subject to heavy vehicular traffic, unless otherwise noted. See Note 2 for details on the placement of grates subject to heavy vehicular traffic such as the placement of grates and pavement areas where pedestrian use will occur.
2. When alternate grates to specified grates are used, they shall be approved after fabrication.
3. Reinforcing is to be placed in 2" increments unless otherwise noted. See Note 2 for details on the placement of reinforcement in the concrete.
4. Reinforced edges and corners shall be 1/2" thicker or better for 10" radius.
5. Reinforcing is to be placed in 2" increments unless otherwise noted.
6. For supplementary details see Sheet No. 203.
7. Grid to be used for the layout of the gutter inlet prior to the gutter Type V, E.A.

RECOMMENDED MAXIMUM PIPE SIZES

Manhole Depth	Manhole Diameter	Manhole Length
4'-0" to 4'-6"	36"	10'-0"
4'-6" to 5'-0"	36"	12'-0"
5'-0" to 5'-6"	36"	14'-0"
5'-6" to 6'-0"	36"	16'-0"
6'-0" to 6'-6"	36"	18'-0"
6'-6" to 7'-0"	36"	20'-0"
7'-0" to 7'-6"	36"	22'-0"
7'-6" to 8'-0"	36"	24'-0"
8'-0" to 8'-6"	36"	26'-0"
8'-6" to 9'-0"	36"	28'-0"
9'-0" to 9'-6"	36"	30'-0"
9'-6" to 10'-0"	36"	32'-0"
10'-0" to 10'-6"	36"	34'-0"
10'-6" to 11'-0"	36"	36'-0"
11'-0" to 11'-6"	36"	38'-0"
11'-6" to 12'-0"	36"	40'-0"
12'-0" to 12'-6"	36"	42'-0"
12'-6" to 13'-0"	36"	44'-0"
13'-0" to 13'-6"	36"	46'-0"
13'-6" to 14'-0"	36"	48'-0"
14'-0" to 14'-6"	36"	50'-0"
14'-6" to 15'-0"	36"	52'-0"
15'-0" to 15'-6"	36"	54'-0"
15'-6" to 16'-0"	36"	56'-0"
16'-0" to 16'-6"	36"	58'-0"
16'-6" to 17'-0"	36"	60'-0"
17'-0" to 17'-6"	36"	62'-0"
17'-6" to 18'-0"	36"	64'-0"
18'-0" to 18'-6"	36"	66'-0"
18'-6" to 19'-0"	36"	68'-0"
19'-0" to 19'-6"	36"	70'-0"
19'-6" to 20'-0"	36"	72'-0"
20'-0" to 20'-6"	36"	74'-0"
20'-6" to 21'-0"	36"	76'-0"
21'-0" to 21'-6"	36"	78'-0"
21'-6" to 22'-0"	36"	80'-0"
22'-0" to 22'-6"	36"	82'-0"
22'-6" to 23'-0"	36"	84'-0"
23'-0" to 23'-6"	36"	86'-0"
23'-6" to 24'-0"	36"	88'-0"
24'-0" to 24'-6"	36"	90'-0"
24'-6" to 25'-0"	36"	92'-0"
25'-0" to 25'-6"	36"	94'-0"
25'-6" to 26'-0"	36"	96'-0"
26'-0" to 26'-6"	36"	98'-0"
26'-6" to 27'-0"	36"	100'-0"

STEEL GRATE

2008 FDOT Design Standards
GUTTER INLET TYPE V
Sheet No. 221

TOP SLAB DRAWINGS

Manhole Depth	Manhole Diameter	Manhole Length
4'-0" to 4'-6"	36"	10'-0"
4'-6" to 5'-0"	36"	12'-0"
5'-0" to 5'-6"	36"	14'-0"
5'-6" to 6'-0"	36"	16'-0"
6'-0" to 6'-6"	36"	18'-0"
6'-6" to 7'-0"	36"	20'-0"
7'-0" to 7'-6"	36"	22'-0"
7'-6" to 8'-0"	36"	24'-0"
8'-0" to 8'-6"	36"	26'-0"
8'-6" to 9'-0"	36"	28'-0"
9'-0" to 9'-6"	36"	30'-0"
9'-6" to 10'-0"	36"	32'-0"
10'-0" to 10'-6"	36"	34'-0"
10'-6" to 11'-0"	36"	36'-0"
11'-0" to 11'-6"	36"	38'-0"
11'-6" to 12'-0"	36"	40'-0"
12'-0" to 12'-6"	36"	42'-0"
12'-6" to 13'-0"	36"	44'-0"
13'-0" to 13'-6"	36"	46'-0"
13'-6" to 14'-0"	36"	48'-0"
14'-0" to 14'-6"	36"	50'-0"
14'-6" to 15'-0"	36"	52'-0"
15'-0" to 15'-6"	36"	54'-0"
15'-6" to 16'-0"	36"	56'-0"
16'-0" to 16'-6"	36"	58'-0"
16'-6" to 17'-0"	36"	60'-0"
17'-0" to 17'-6"	36"	62'-0"
17'-6" to 18'-0"	36"	64'-0"
18'-0" to 18'-6"	36"	66'-0"
18'-6" to 19'-0"	36"	68'-0"
19'-0" to 19'-6"	36"	70'-0"
19'-6" to 20'-0"	36"	72'-0"
20'-0" to 20'-6"	36"	74'-0"
20'-6" to 21'-0"	36"	76'-0"
21'-0" to 21'-6"	36"	78'-0"
21'-6" to 22'-0"	36"	80'-0"
22'-0" to 22'-6"	36"	82'-0"
22'-6" to 23'-0"	36"	84'-0"
23'-0" to 23'-6"	36"	86'-0"
23'-6" to 24'-0"	36"	88'-0"
24'-0" to 24'-6"	36"	90'-0"
24'-6" to 25'-0"	36"	92'-0"
25'-0" to 25'-6"	36"	94'-0"
25'-6" to 26'-0"	36"	96'-0"
26'-0" to 26'-6"	36"	98'-0"
26'-6" to 27'-0"	36"	100'-0"

TOP SLAB WITH CENTRIFUGAL CASTING

Manhole Depth	Manhole Diameter	Manhole Length
4'-0" to 4'-6"	36"	10'-0"
4'-6" to 5'-0"	36"	12'-0"
5'-0" to 5'-6"	36"	14'-0"
5'-6" to 6'-0"	36"	16'-0"
6'-0" to 6'-6"	36"	18'-0"
6'-6" to 7'-0"	36"	20'-0"
7'-0" to 7'-6"	36"	22'-0"
7'-6" to 8'-0"	36"	24'-0"
8'-0" to 8'-6"	36"	26'-0"
8'-6" to 9'-0"	36"	28'-0"
9'-0" to 9'-6"	36"	30'-0"
9'-6" to 10'-0"	36"	32'-0"
10'-0" to 10'-6"	36"	34'-0"
10'-6" to 11'-0"	36"	36'-0"
11'-0" to 11'-6"	36"	38'-0"
11'-6" to 12'-0"	36"	40'-0"
12'-0" to 12'-6"	36"	42'-0"
12'-6" to 13'-0"	36"	44'-0"
13'-0" to 13'-6"	36"	46'-0"
13'-6" to 14'-0"	36"	48'-0"
14'-0" to 14'-6"	36"	50'-0"
14'-6" to 15'-0"	36"	52'-0"
15'-0" to 15'-6"	36"	54'-0"
15'-6" to 16'-0"	36"	56'-0"
16'-0" to 16'-6"	36"	58'-0"
16'-6" to 17'-0"	36"	60'-0"
17'-0" to 17'-6"	36"	62'-0"
17'-6" to 18'-0"	36"	64'-0"
18'-0" to 18'-6"	36"	66'-0"
18'-6" to 19'-0"	36"	68'-0"
19'-0" to 19'-6"	36"	70'-0"
19'-6" to 20'-0"	36"	72'-0"
20'-0" to 20'-6"	36"	74'-0"
20'-6" to 21'-0"	36"	76'-0"
21'-0" to 21'-6"	36"	78'-0"
21'-6" to 22'-0"	36"	80'-0"
22'-0" to 22'-6"	36"	82'-0"
22'-6" to 23'-0"	36"	84'-0"
23'-0" to 23'-6"	36"	86'-0"
23'-6" to 24'-0"	36"	88'-0"
24'-0" to 24'-6"	36"	90'-0"
24'-6" to 25'-0"	36"	92'-0"
25'-0" to 25'-6"	36"	94'-0"
25'-6" to 26'-0"	36"	96'-0"
26'-0" to 26'-6"	36"	98'-0"
26'-6" to 27'-0"	36"	100'-0"

ALT. A STRUCTURE BOTTOM FOR INLET TYPE V

2008 FDOT Design Standards
GUTTER INLET TYPE V
Sheet No. 221

FDOT TYPE "V" GUTTER INLET

N:\08140 Walgreens Normandy\Design\p081303.dwg

Professional Engineer

No.	Date	Description	Initials
1	05/26/2009	Per FDOT Comments	AA
2	09/05/2009	Revised/Added Details	AA
3	02/05/2010	Per Walgreens Review Comments	AA

REVISIONS

PAVING, CURBING AND DRAINAGE DETAILS

Taylor & White, Inc.
Consulting and Design Engineers
8936 Meridian Way, Suite 100 - Jacksonville, Florida 32255
Tel. (904) 346-0071 - Fax (904) 346-3051 - Toll Free (877) 426-4400
www.taylorandwhite.com

Taylor & White, Inc.
Jacksonville, Florida
SWC Fouraker Rd & Normandy Blvd
Store No. 13450

DO NOT SCALE THIS DRAWING - DIMENSIONS AND NOTES TAKE PREFERENCE

Scale:	N.T.S.
Project Manager:	DGT
Designer:	AA
Drawn by:	AA
Certificate of Authorization:	7298
Key Map:	

Project No.: 08140.07
Date: November 2008
Sheet No.: C2.5

NOT RELEASED FOR CONSTRUCTION