

PROJECT TYPE

DRAWINGS/SPECIFICATIONS BY:
 WALGREENS' CONSULTANT
 LANDLORD'S CONSULTANT

CONSTRUCTION WORK BY: (UNLESS NOTED OTHERWISE)
 WALGREENS' CONTRACTOR
 LANDLORD'S CONTRACTOR (TURNKEY CONSTRUCTION)

STORE	BUILDING
NEW..... <input checked="" type="checkbox"/>	NEW..... <input checked="" type="checkbox"/>
REMODELING... <input type="checkbox"/>	EXISTING..... <input type="checkbox"/>
RELOCATION... <input type="checkbox"/>	NEW SHELL ONLY <input type="checkbox"/>
OTHER..... <input type="checkbox"/>	

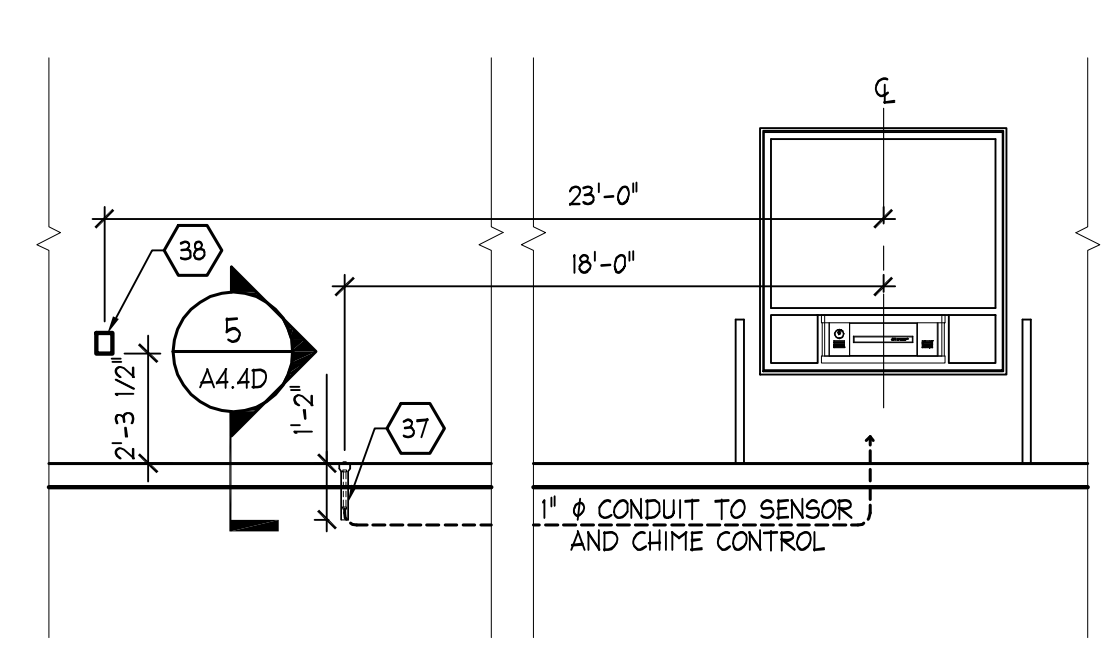
DRIVE-THRU NOTES:

IF CEILING IS PLENUM AND UNDERGROUND CONDUIT IS TO BE USED, IT MUST BE A MINIMUM 1" CONDUIT TO SAME AREA.
 TYPICAL DRIVE-UP PHARMACY DETAILS:
 THIS DRAWING IS INTENDED FOR INSTALLATION DETAILS FOR DIEBOLD DRIVE-UP SYSTEMS. IT IS NOT INTENDED TO BE USED FOR THE FINAL CONSTRUCTION DETAILS. SEE ARCHITECT'S DETAILS FOR ARCHITECTURAL & CONSTRUCTION DETAILS.

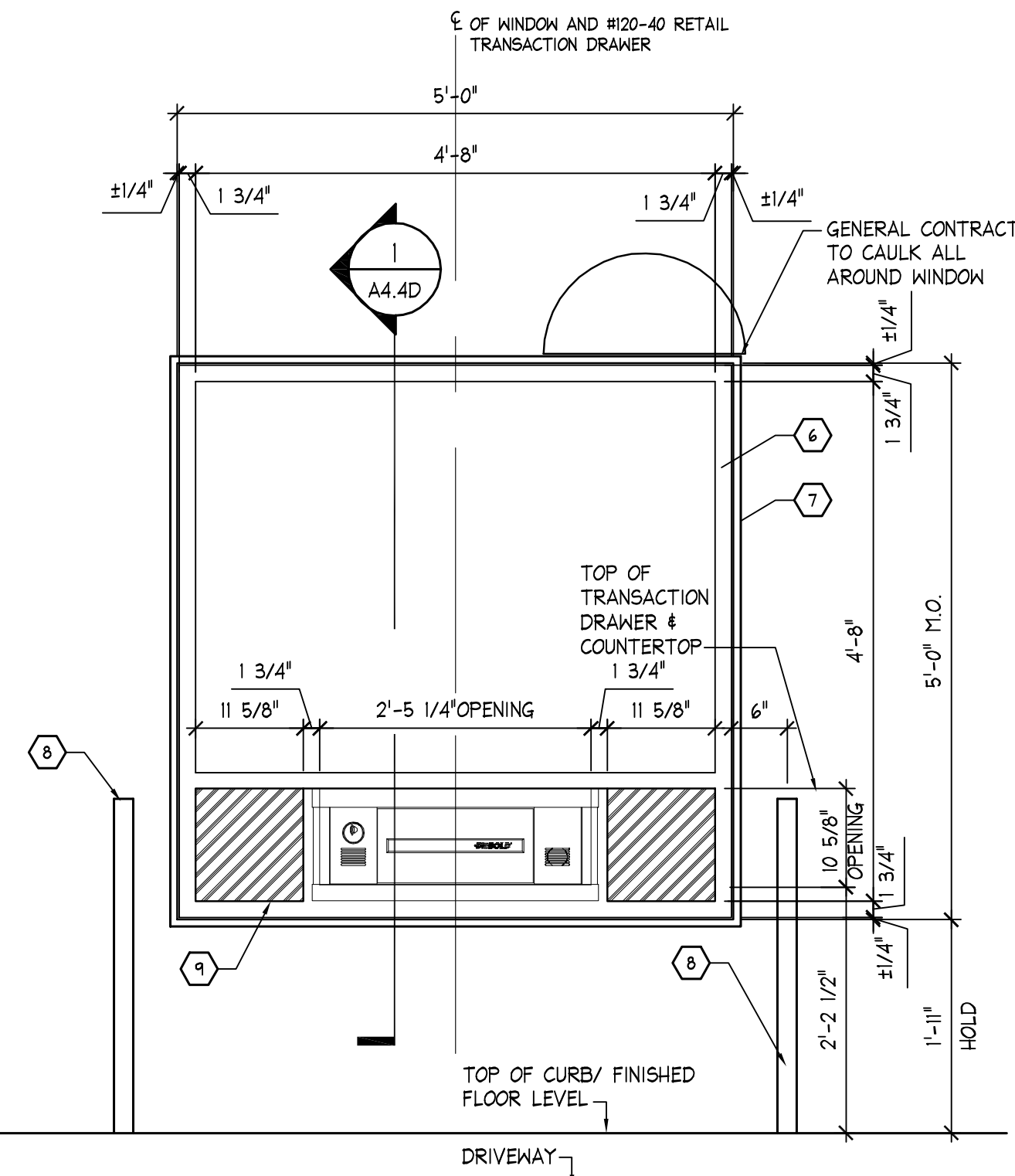
GENERAL CONTRACTOR SHALL CROSS REFERENCE THIS DRAWING WITH THE LATEST SET OF DRAWINGS PROVIDED BY THE ARCHITECT, AND SHALL VERIFY DIMENSIONS AND DETAILS FOR EXACTNESS.

GENERAL CONTRACTOR SHALL COORDINATE WITH A DIEBOLD FIELD COORDINATOR TO ENSURE CLEAR INTERPRETATION OF THIS DRAWING AND TO DISCUSS DIEBOLD EQUIPMENT MODE OF INSTALLATION.

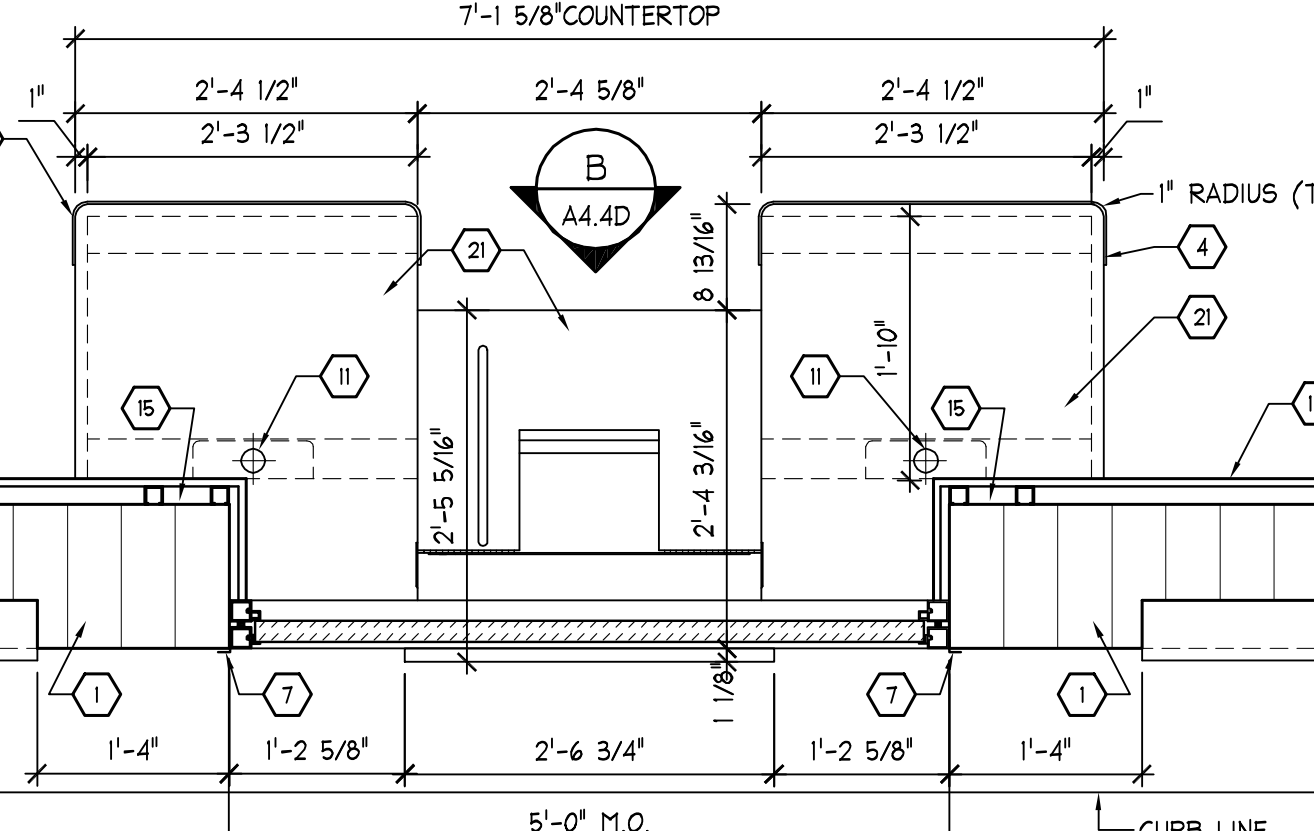
ANY DEVIATION FROM THE DETAILS SHOWN ON THIS DRAWING SHALL NOT BE MADE WITHOUT THE APPROVAL OF DIEBOLD ENGINEERING OR FIELD REP.



6 EXTERIOR ELEVATION
 A4.4D SCALE: 1/4" = 1'-0"

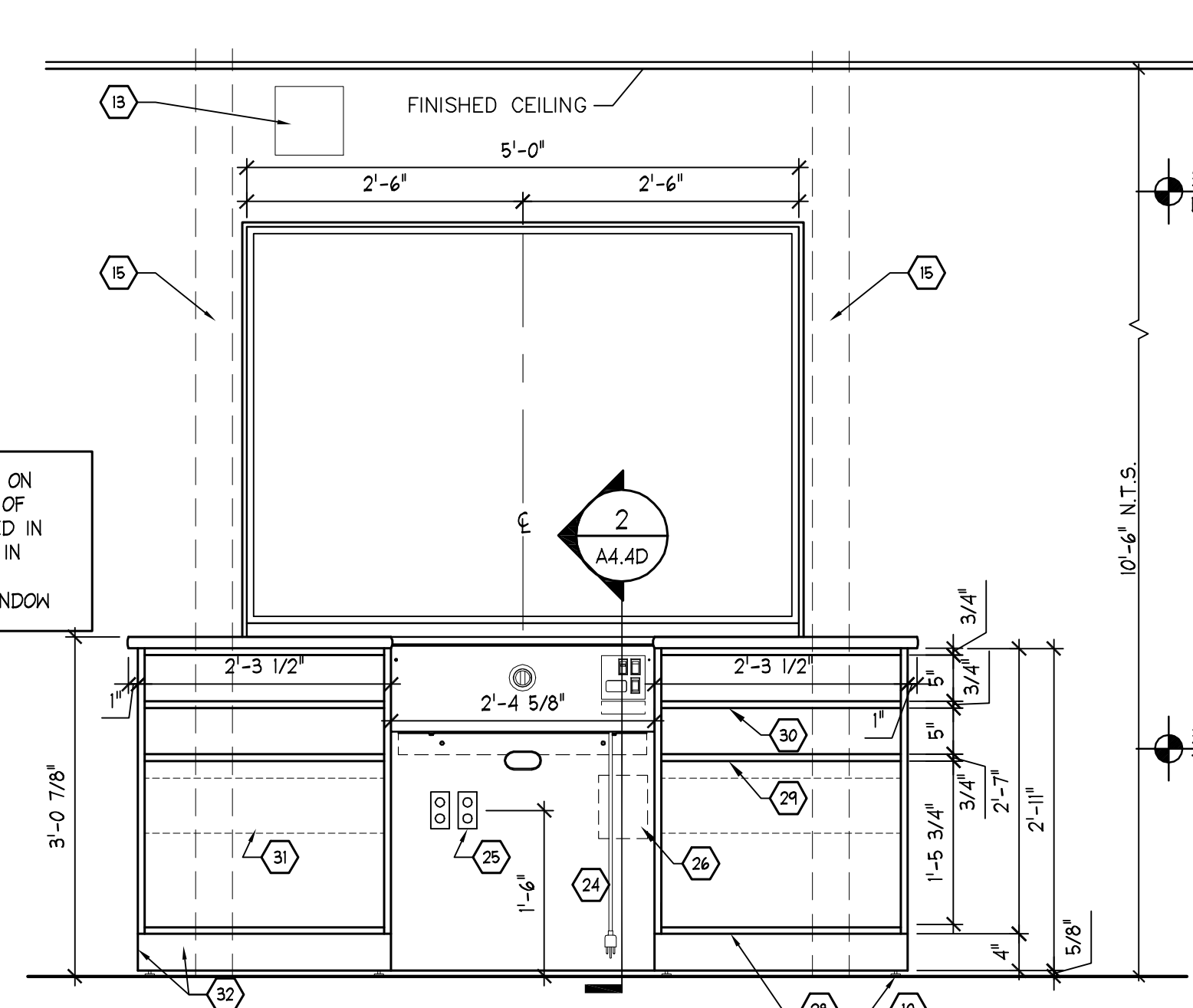


A EXTERIOR ELEVATION
 A4.4D SCALE: 3/4" = 1'-0"



C PARTIAL PLAN AT DRIVE-THRU WINDOW
 A4.4D SCALE: 3/4" = 1'-0"

NOTE: HANDSET ON OPPOSITE SIDE OF WINDOW LOCATED IN SAME POSITION IN RELATION TO COUNTERTOP/WINDOW

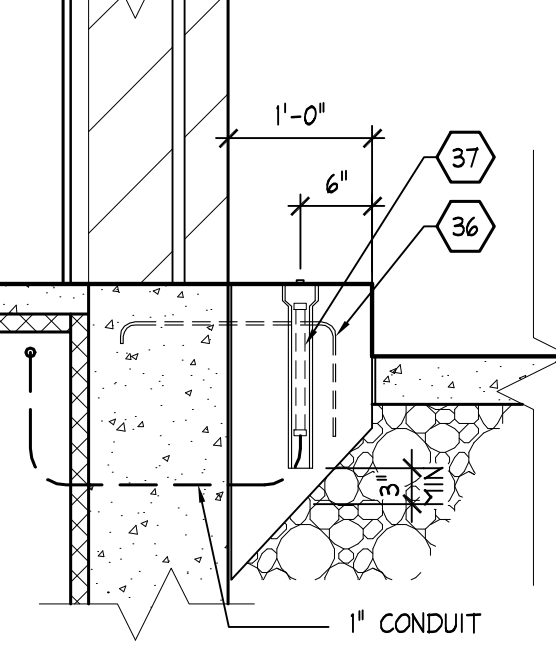


B INTERIOR ELEVATION
 A4.4D SCALE: 3/4" = 1'-0"

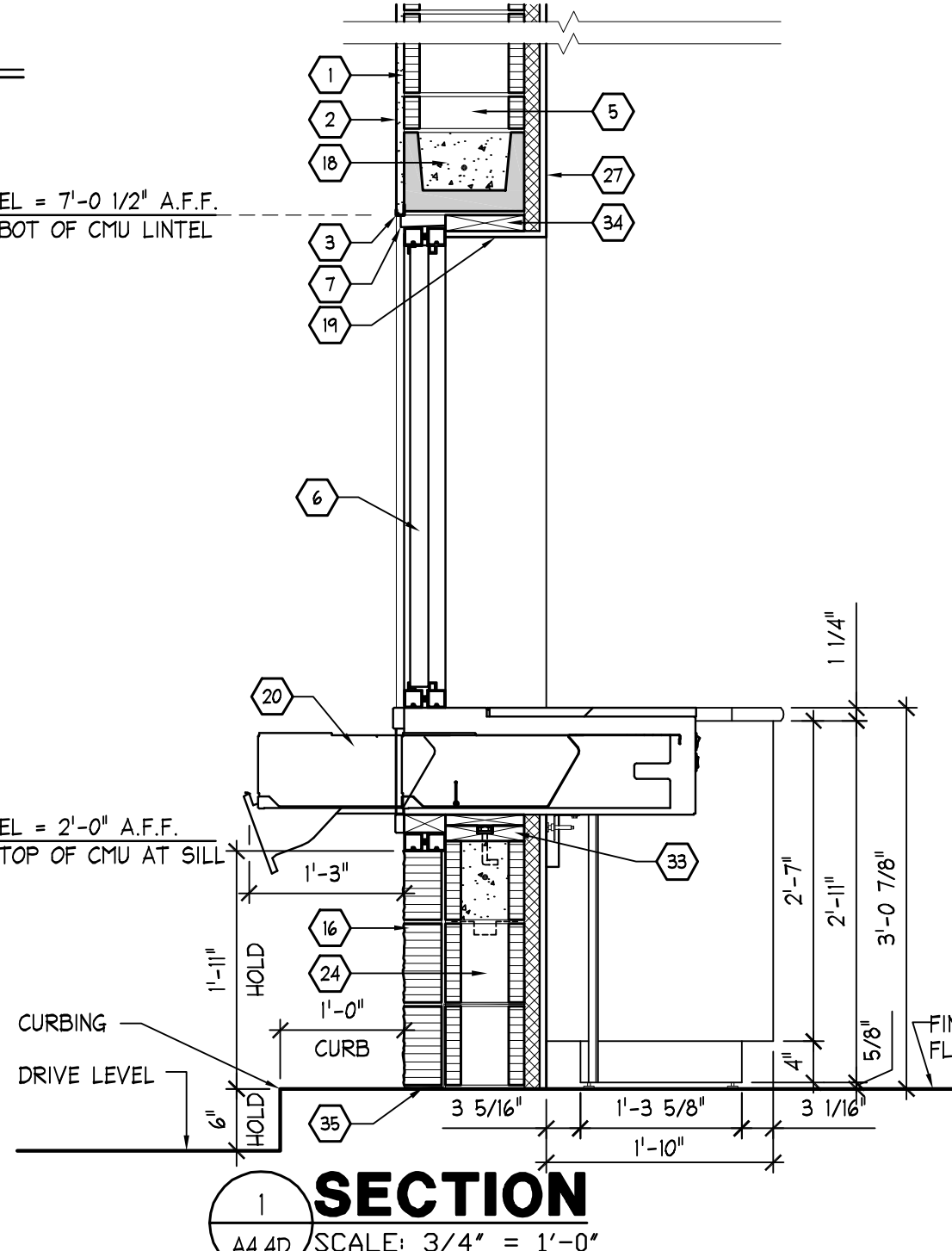
- KEYED NOTES**
- 12"x8"x16" CMU WALL AT DRIVE-THRU WINDOW
 - EI'S FINISH COAT OVER PORTLAND CEMENT BASE
 - PLASTER 'J' TRIM
 - COUNTERTOP T-MOLD EDGING.
 - CMU BLOCK TO BE CUT TO ALIGN WITH BLOCK COURSING
 - INSULATED B.R. GLASS AND INSULATION 1 3/4" X 4" ALUMINUM FRAME.
 - 1" ALUMINUM TRIM FRAME CAULK CONTINUOUS.
 - 36" HIGH SURFACE-MOUNTED FLEXIBLE DELINEATOR POST AS MANUFACTURED BY 'FLEXSTAKE'-FASTEN TO CONCRETE WITH BOLTS (NO ADHESIVE FASTENING).
 - DIEBOLD INSULATED ALUMINUM CLAD INSERT PANELS WITH 3/16" B.R. STEEL PLATE BACKUP (FINISH TO MATCH FRAMES).
 - PEDESTAL SUPPLIED AND INSTALLED BY DIEBOLD. FINISH: STANDARD GRAY #1.
 - 2" DIAMETER HOLES WITH GROMMET FOR AUDIO CABLES (FIELD CUT).
 - N/A
 - DRIVE ALERT CHIME LOCATION.
 - FINISHED WALL BY G.C.
 - PROVIDE 4" WIDE VOID IN WALL FROM ABOVE CEILING TO BELOW COUNTER FOR WIRE CHASE. STOP CORNER FURRING BELOW COUNTER FOR ACCESS TO KNEE SPACE. COORDINATE W/ ELEC. DRAWINGS.
 - 4" SPLIT-FACE VENEER, SEE STOREFRONT ELEVATION THIS SHEET
 - DIEBOLD TO FINISH JOINT AT COUNTERTOP AND WALL/WINDOW FRAME WITH CAULK OR BACK SPLASH AS REQUIRED.
 - 12" CONT CMU LINTEL, SEE STRUCT
 - DRYWALL RETURN TO WINDOW FRAME BY GENERAL CONTRACTOR.
 - DRAWER UNIT (WITH DROP FRONT).
 - COUNTERTOP-FORMICA PART #909-58, BLACK-MATTE FINISH, SUPPLIED AND INSTALLED BY DIEBOLD.
 - REMOVABLE PANEL SECURED IN PLACE BY ANGLES AND HELD BY 'VELCRO' STRIPS.
 - OPENING TO WIRE CHASE.
 - 8"x8"x16" CMU WALL
 - ONE (1) DUPLEX RECEPTACLES WITH 120V, 1 PH, 20 AMP FOR EAIO POWER SUPPLY AND CALL CHIME. TWO (2) DUPLEX RECEPTACLES WITH 120V, 1 PH, 20 AMP ON SEPARATE CIRCUIT FOR PBX BY ELECTRICAL CONTRACTOR.
 - 816 PBX INTERFACE BOXES, EACH WITH OWN TRANSFORMER.
 - 5/8" GYP BRD OVER 1 1/2" RIGID INSUL + 1 1/2" "Z" FURRING CHANNELS FROM FLOOR TO DECK (MIN R-10 WALL ASSEMBLY)
 - CABINET SUPPLIED AND INSTALLED BY DIEBOLD.
 - FIXED SHELF.
 - ADJUSTABLE SHELF (1" INCREMENTS).
 - OUTLINE OF 6" X 2'-3" OPENING IN PEDESTAL BACK (TYP.).
 - GENERAL CONTRACTOR TO PROVIDE BLOCKING TO BACK MOLDING AND COVE MOLDING TO MATCH EXISTING, IF REQUIRED, WHEN GAP EXCEEDS 3/4".
 - 2"x8" P.T. WD SILL PLATE ANCHORED TO K.O. BLK W/ 1/2" DIA ANCHOR BOLT W/ MIN 4" EMBED @ 24" O.C. INTO K.O. BLK W/ (1) #5 CONT.
 - 2"x P.T. WD BLK'G AND SHIM AS REQ'D FOR STOREFRONT SUPPORT. ANCHOR TO LINTEL W/ 1/2" DIA WEDGE ANCHOR W/ EPOXY @ 24" O.C. W/ MIN 4" EMBED.
 - THRU-WALL FLASHING TURN UP 2" INSIDE BLOCK FACE, SEE SPEC'S
 - #5 REBAR
 - DRIVE-UP SENSOR ENCLOSED IN 2 1/2" Ø PVC, 14" LONG, W/ CAP.
 - RECESSED MOUNTED WEATHERPROOF JUNCTION BOX (FOR FUTURE INTERCOM GREETING STATION) W/ CONDUIT TO BELOW WINDOW, PROVIDED BY ELECTRICAL CONTRACTOR.

DETAIL/PLAN

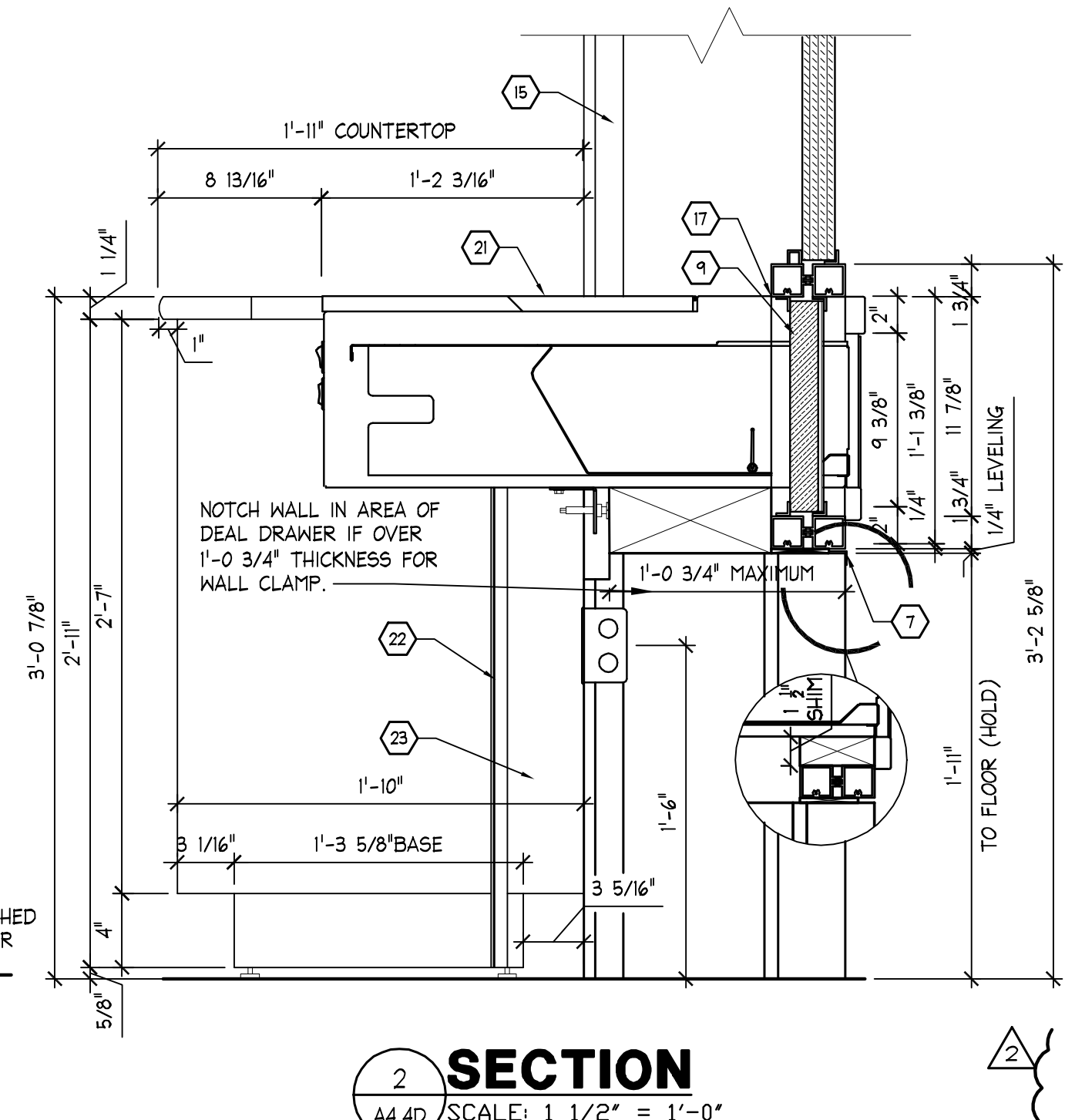
SCALE: 3/4" = 1'-0"



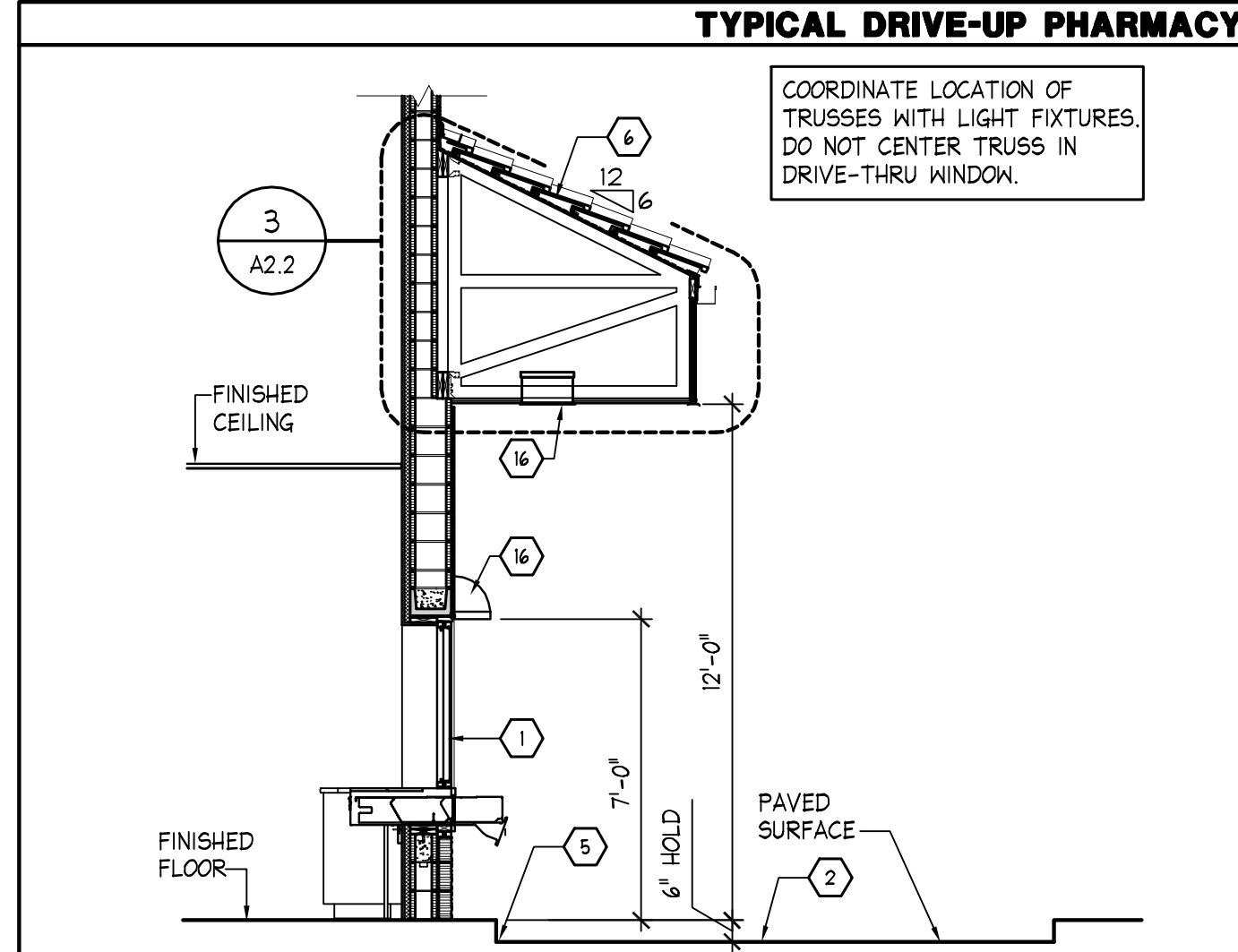
5 DETAIL
 A4.4D SCALE: 3/4" = 1'-0"



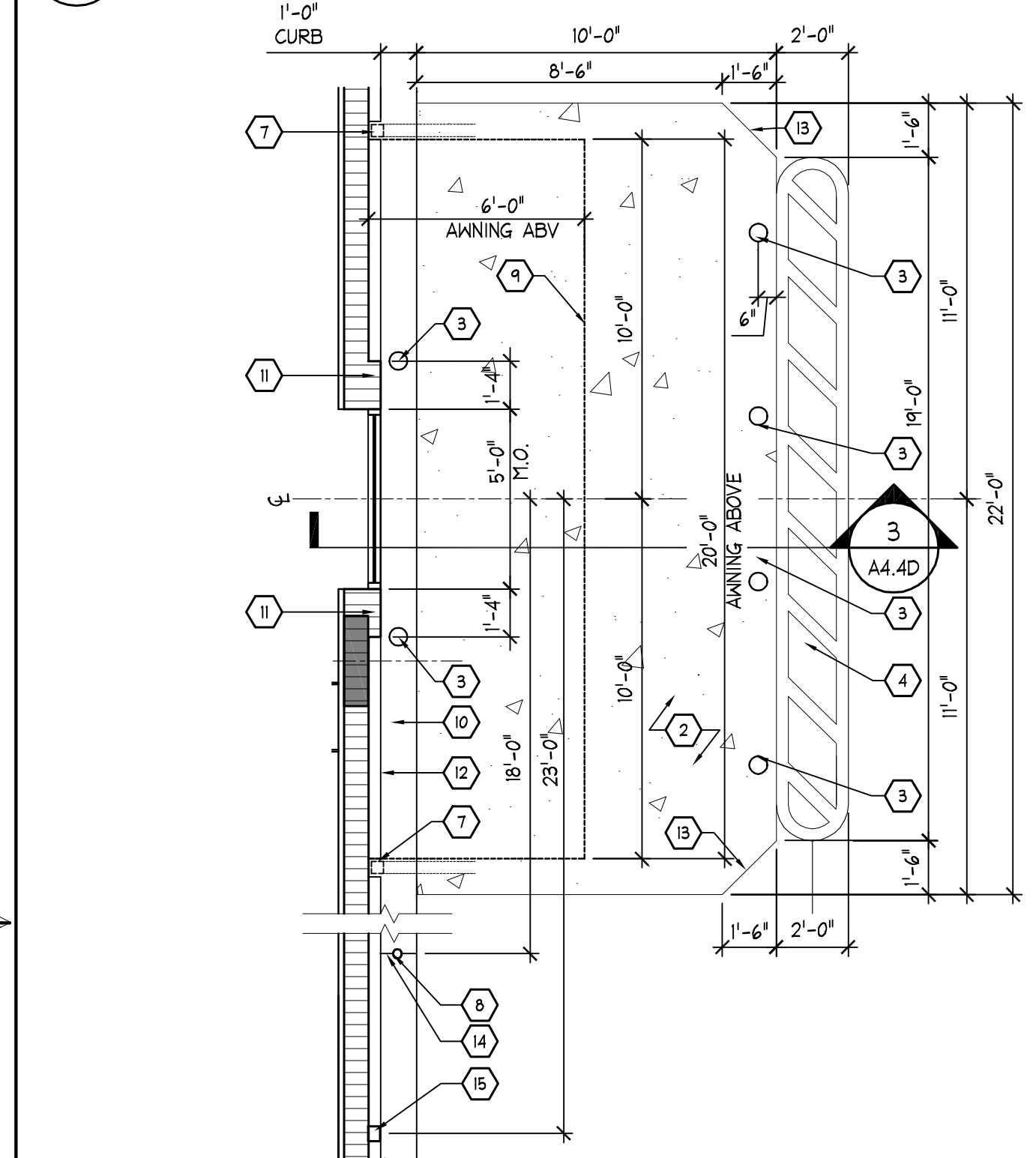
1 SECTION
 A4.4D SCALE: 3/4" = 1'-0"



2 SECTION
 A4.4D SCALE: 1 1/2" = 1'-0"



3 SECTION AT DRIVE-UP PHARMACY
 A4.4D SCALE: 1/4" = 1'-0"



4 DRIVE-UP PHARMACY PLAN DETAIL
 A4.4D SCALE: 1/4" = 1'-0"

DRIVE-THRU WINDOW GENERAL NOTES:
 GENERAL CONTRACTOR:
 SHALL PROVIDE WALL OPENINGS, B.R. FRAME, B.R. WINDOW, B.R. DEALDRAWER AND COUNTER BY DIEBOLD. PROVIDE WINDOW LINTELS AS REQUIRED AS SPECIFIED BY THE ARCHITECT AND FINISH UP TO THE WINDOW AND COUNTERTOP UNITS. CONTRACTOR SHALL ENSURE WALL OPENINGS ARE PLUMB AND SQUARE.

ELECTRICAL CONTRACTOR:
 SHALL PROVIDE ALL BOXES, OUTLETS, & WIRING AS NOTED. VERIFY COMPUTER AND ADDITIONAL REQUIREMENTS BY WALGREENS.

COORDINATE WINDOW INSTALLATION WITH: DIEBOLD, INC. MR. KEVIN CROOK (847) 598-3240 EMAIL: kevin.crook@diebold.com

ALLOW 60 DAY LEAD TIME REQUIRED FOR DELIVERY.

GLASS: 1 5/8" INSULATED BULLET RESISTANT GLASS.

FRAME: THERMALLY INSULATED ALUMINUM TUBE FRAMES & ALUMINUM TRIM ANGLES - CLEAR ANODIZED

NOTE: MATCH STOREFRONT SYSTEM, CONTRACTOR TO VERIFY BEFORE ORDERING PHARMACY WINDOW AND DRAWER SYSTEM.

INFILL PANELS: INSULATED ALUMINUM CLAD PANELS.

