



FWH Architects
3336 Grand Blvd. Suite 102
Holiday, Florida 34690
Ph. 727. 815. 3336
Fax 727. 815. 3337

PROJECT TYPE

DRAWINGS/SPECIFICATIONS BY:

- WALGREENS' CONSULTANT
- LANDLORD'S CONSULTANT

CONSTRUCTION WORK BY: (UNLESS NOTED OTHERWISE)

- WALGREENS' CONTRACTOR
- LANDLORD'S CONTRACTOR (TURNKEY CONSTRUCTION)

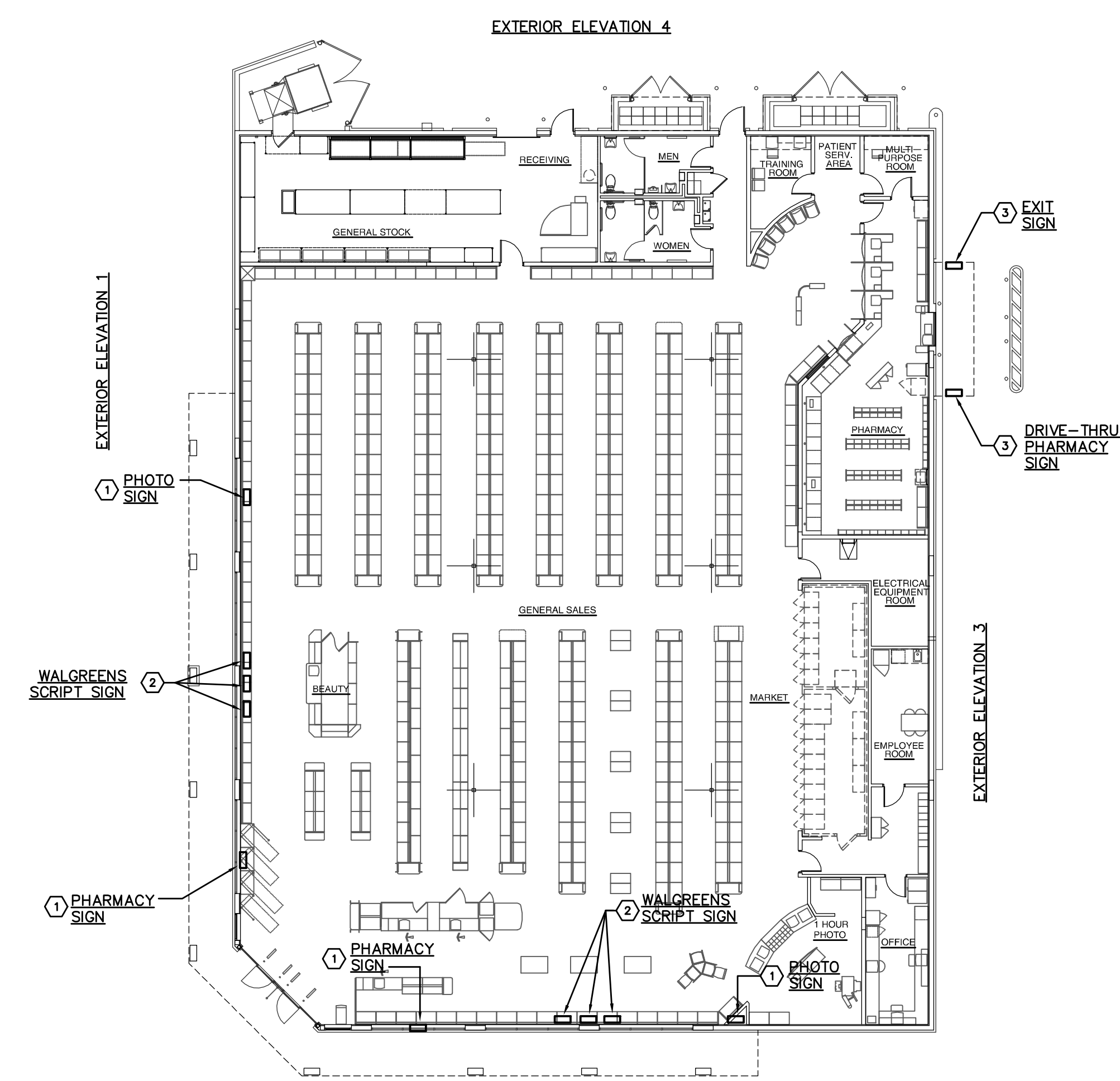
STORE BUILDING

- | | | | |
|---------------|-------------------------------------|----------------|-------------------------------------|
| NEW..... | <input checked="" type="checkbox"/> | NEW..... | <input checked="" type="checkbox"/> |
| REMODELING... | <input type="checkbox"/> | EXISTING..... | <input type="checkbox"/> |
| RELOCATION... | <input type="checkbox"/> | NEW SHELL ONLY | <input type="checkbox"/> |
| OTHER..... | <input type="checkbox"/> | | |

CHEHAYEB & ASSOCIATES, INC.
CONSULTING ENGINEERS

3702 AZEELE ST.
TAMPA, FL 33609 (813) 876-1415
(fax) 876-0913

LIC. #49521 SOUHEIL CHEHAYEB CERT. #7340
09-97



WARNING:
LETTERS WILL NOT LIGHT IF WIRING
POLARITY IS REVERSED.

RED: POSITIVE (+)
BLACK: NEGATIVE (-)

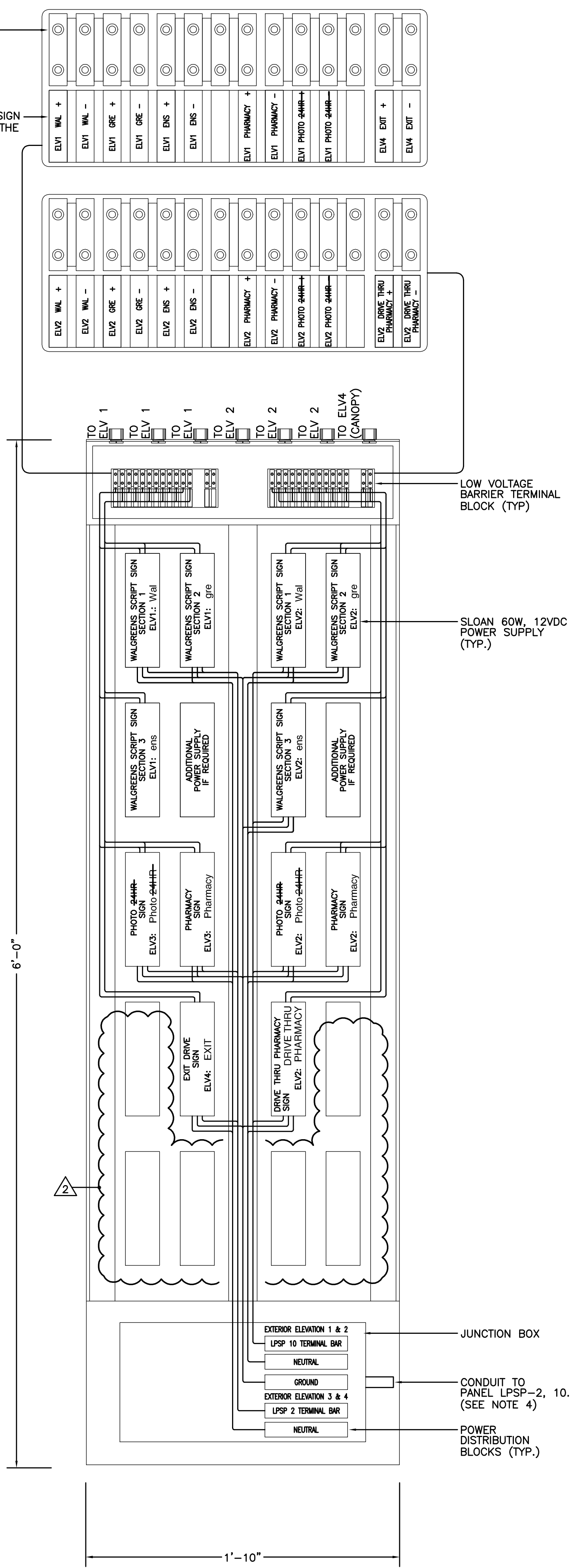
SLOAN LED SIGN ELECTRICAL DATA (0.9PF)							
SIGN (MOST COMMON SIZES, NOTE 7)	WATTS	QUANTITY OF *POWER SUPPLY	QUANTITY OF LOW VOLTAGE CABLE	SIGN (MOST COMMON SIZES, NOTE 7)	WATTS	QUANTITY OF *POWER SUPPLY	QUANTITY OF LOW VOLTAGE CABLE
WALGREENS SCRIPT:				DRIVE THRU PHARMACY (BOX SIGN)	40.8	1	2
18" x 24" x 1 1/2"	111.6	3	6				
21" x 24" x 1 1/2"	136.8	3	6				
24" x 24" x 1 1/2"	162.4	4	8				
PHARMACY:	49.2	1	2	PHOTO:	22.2	1	2
18" x 18" x 1 1/2"				18" x 18" x 1 1/2"			
PHOTO:	28.8	1	2	EXIT: (BOX SIGN)	58.2	1	2
18" x 18" x 1 1/2"							
CLINIC:	28.8	1	2				
18" x 18" x 1 1/2"							

POWER SUPPLY RATED 60 WATTS.

** - THE 25"-11 1/2" SCRIPT SIGN SIZE IS DEPICTED AS AN EXAMPLE IN POWER SUPPLY RACK ELEVATION & FLOOR PLAN.

*** - POWER SUPPLY SHARED WITH "DRIVE-THRU PHARMACY" POWER SUPPLIES.

TYPICAL LED SIGN POWER SUPPLY RACK ELEVATION
NOT TO SCALE

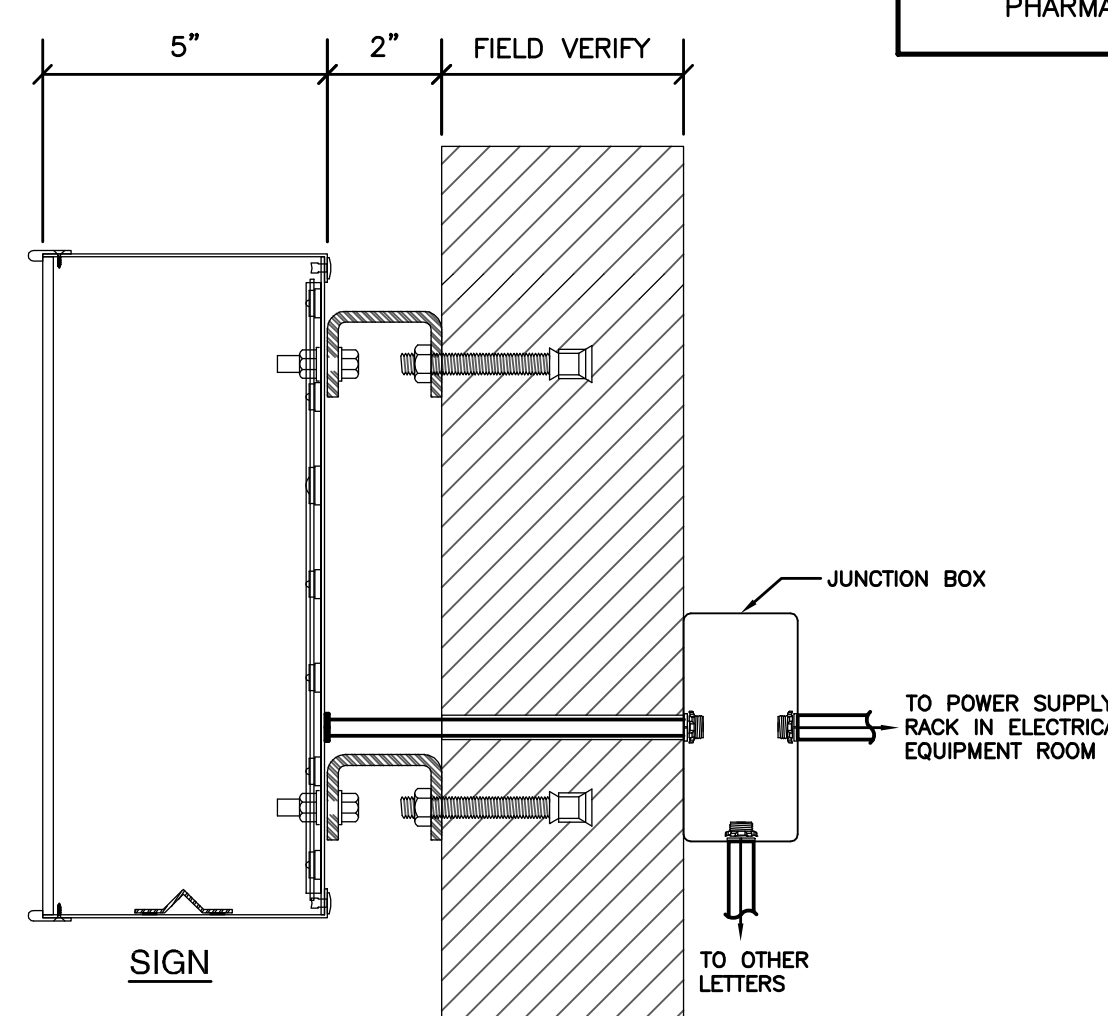


TYPICAL TAGS FOR LOW VOLTAGE CONDUCTORS BETWEEN TERMINAL BLOCKS AND SIGNS (NOTE 3)			
WALGREENS SCRIPT	ELV1 WAL +	ELV2 WAL +	
	ELV1 WAL -	ELV2 WAL -	
	ELV1 GRE +	ELV2 GRE +	
	ELV1 GRE -	ELV2 GRE -	
	ELV1 ENS +	ELV2 ENS +	
	ELV1 ENS -	ELV2 ENS -	
PHARMACY	ELV1 PHARMACY +	ELV2 PHARMACY +	
	ELV1 PHARMACY -	ELV2 PHARMACY -	
PHOTO	ELV1 PHOTO 24HR +	ELV2 PHOTO 24HR +	
	ELV1 PHOTO 24HR -	ELV2 PHOTO 24HR -	
DRIVE THRU PHARMACY	ELV2 DRIVE THRU PHARMACY +	ELV4 EXIT +	
	ELV2 DRIVE THRU PHARMACY -	ELV4 EXIT -	

FLOOR PLAN CHANNEL LETTER LED SYSTEM
SCALE: 1/16" = 1'-0"

- CHANNEL LETTER LED SYSTEM KEYED NOTES
- JUNCTION BOX FOR EXTERIOR INDIVIDUAL LETTER SIGN.
 - JUNCTION BOXES FOR EXTERIOR SCRIPT SIGN. SEE SCHEDULE ON THIS SHEET FOR QUANTITIES AND SIZES.
 - JUNCTION BOXES FOR DRIVE THRU BOX SIGNS.

- CHANNEL LETTER LED SYSTEM NOTES
- ALL WORK SHOWN SHALL COMPLY WITH ALL NATIONAL, STATE AND LOCAL CODES, ORDINANCES, ETC.
 - SEE ARCHITECTURAL EXTERIOR ELEVATIONS FOR EXACT SIGN POSITIONS.
 - ELECTRICAL CONTRACTOR SHALL FURNISH WIRING BETWEEN LOW VOLTAGE BARRIER TERMINAL BLOCKS AND J-BOXES NEAR SIGNS (#10AWG). TAGS (SEE DESCRIPTION SHOWN ON TABLE) MUST BE FURNISHED BY ELECTRICAL CONTRACTOR AND ATTACHED ON BOTH ENDS OF EACH LOW VOLTAGE CONDUCTOR. FINAL CONNECTION OF LOW VOLTAGE CONDUCTORS TO BARRIER TERMINAL BLOCKS AND AT THE J-BOXES SHALL BE FURNISHED BY SIGN CONTRACTOR.
 - WIRING BETWEEN PANEL "LP-SP", CIRCUITS 2 AND 10 AND POWER DISTRIBUTION J-BOX SHALL BE FURNISHED BY ELECTRICAL CONTRACTOR.
 - ELECTRICAL CONTRACTOR SHALL FURNISH AND INSTALL PLYWOOD BOARD FOR POWER SUPPLY RACK. PLYWOOD BOARD SHALL BE INSTALLED NEXT TO TELEPHONE TERMINAL BOARD.
 - LED POWER SUPPLY RACK (FURNISHED BY THE SIGN CONTRACTOR) SHALL BE INSTALLED ON PLYWOOD BOARD BY ELECTRICAL CONTRACTOR. RACK SHALL BE FURNISHED COMPLETE WITH POWER SUPPLIES, POWER DISTRIBUTION J-BOX AND LOW VOLTAGE BARRIER TERMINAL BLOCKS. POWER SUPPLIES SHALL BE PRE-WIRED TO POWER DISTRIBUTION J-BOX AND LOW VOLTAGE BARRIER TERMINAL BLOCKS. EACH POWER SUPPLY SHALL BE IDENTIFIED WITH VINYL COPY INDICATING LETTERS OF SIGN AND LOCATION OF SIGN. EACH TERMINAL AT BARRIER TERMINAL BLOCK SHALL BE IDENTIFIED WITH VINYL COPY INDICATING POLARITY, LETTERS OF SIGN AND LOCATION OF SIGN.
 - CONSULTANT SHALL VERIFY QUANTITY AND SIZE OF LED SIGNS.
 - NOT USED.



WARNING:
CHANGE IN WIRING
POLARITY WILL CAUSE
FAILURE IN DC
CONTROLLERS AND
POWER SUPPLY.

RED WIRE HAS:
POSITIVE (+) DC VOLTAGE
BLACK WIRE HAS:
NEGATIVE (-) DC VOLTAGE

NO.	DATE	DESCRIPTION
2	02.05.10	REVISED PER WGS FIRST REVIEW COMMENTS

CERTIFICATION AND SEAL

I HEREBY CERTIFY THAT THIS PLAN AND SPECIFICATION WERE PREPARED BY ME OR UNDER MY DIRECT SUPERVISION AND THAT I AM A DULY REGISTERED ARCHITECT OR ENGINEER UNDER THE LAWS OF THE STATE OF FLORIDA AS SIGNIFIED BY MY HAND AND SEAL.

PROJECT NAME
**STORE #13450
SWC OF FOURAKER & NORMANDY
JACKSONVILLE, FLORIDA**

DRAWING TITLE
FLOOR PLAN - CHANNEL LETTER LED SYSTEM (SLOAN)

DATE: 11.30.09	WALGREENS STORE NO. 13450	DRAWING NO.
DRAWN BY: P.M.	SCALE: AS SHOWN	E17
REVIEWED BY: S.C.	RELEASED TO CONSTRUCTION	FWH PROJECT NO. 0913