

PROJECT TYPE

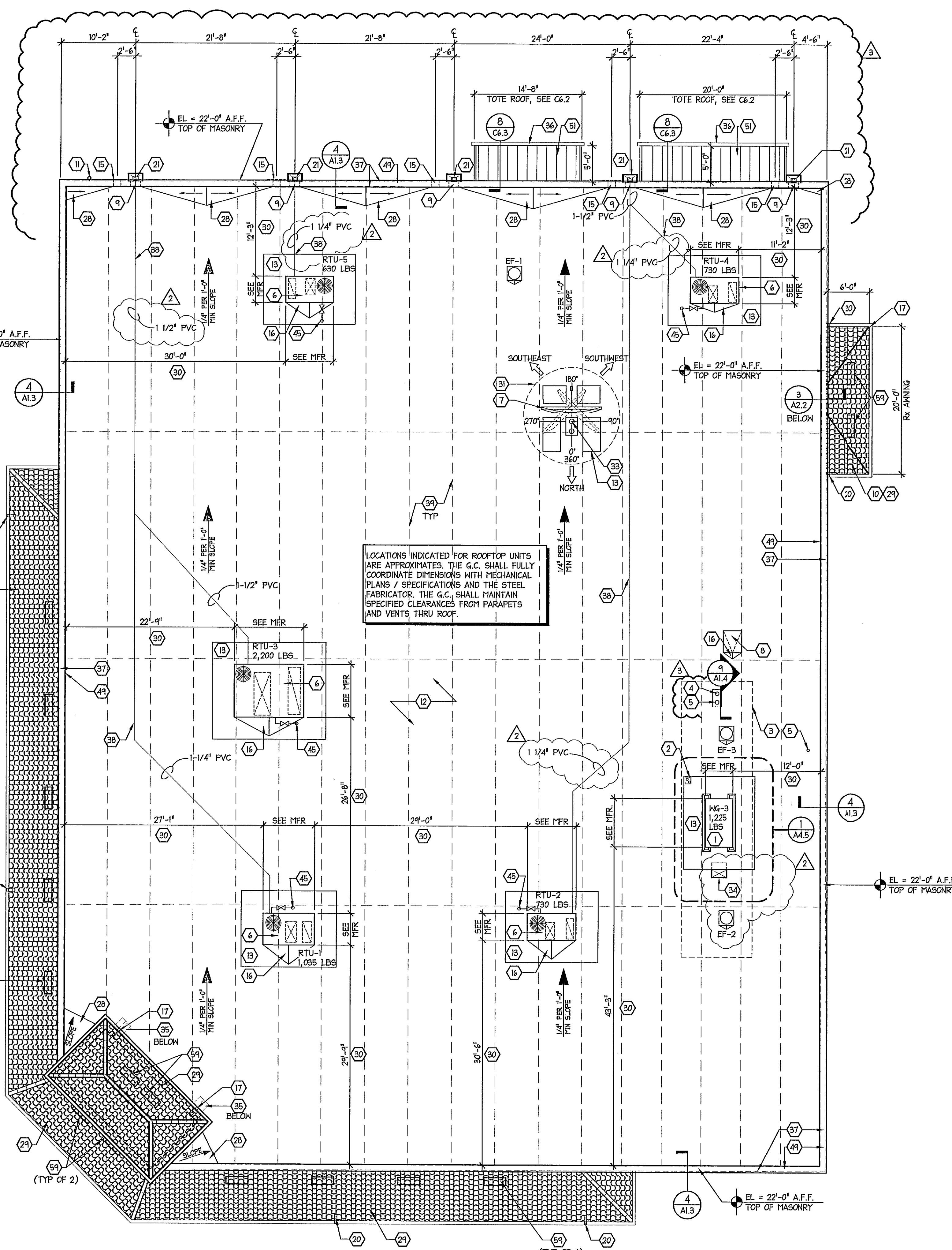
DRAWINGS/SPECIFICATIONS BY:
 HALGREENS' CONSULTANT
 LANDLORD'S CONSULTANT
 CONSTRUCTION WORK BY: (UNLESS NOTED OTHERWISE)
 HALGREENS' CONTRACTOR
 LANDLORD'S CONTRACTOR (TURNKEY CONSTRUCTION)

STORE	BUILDING
NEW.....	NEW.....
REMODELING...	EXISTING.....
RELOCATION...	NEW SHELL ONLY
OTHER.....	

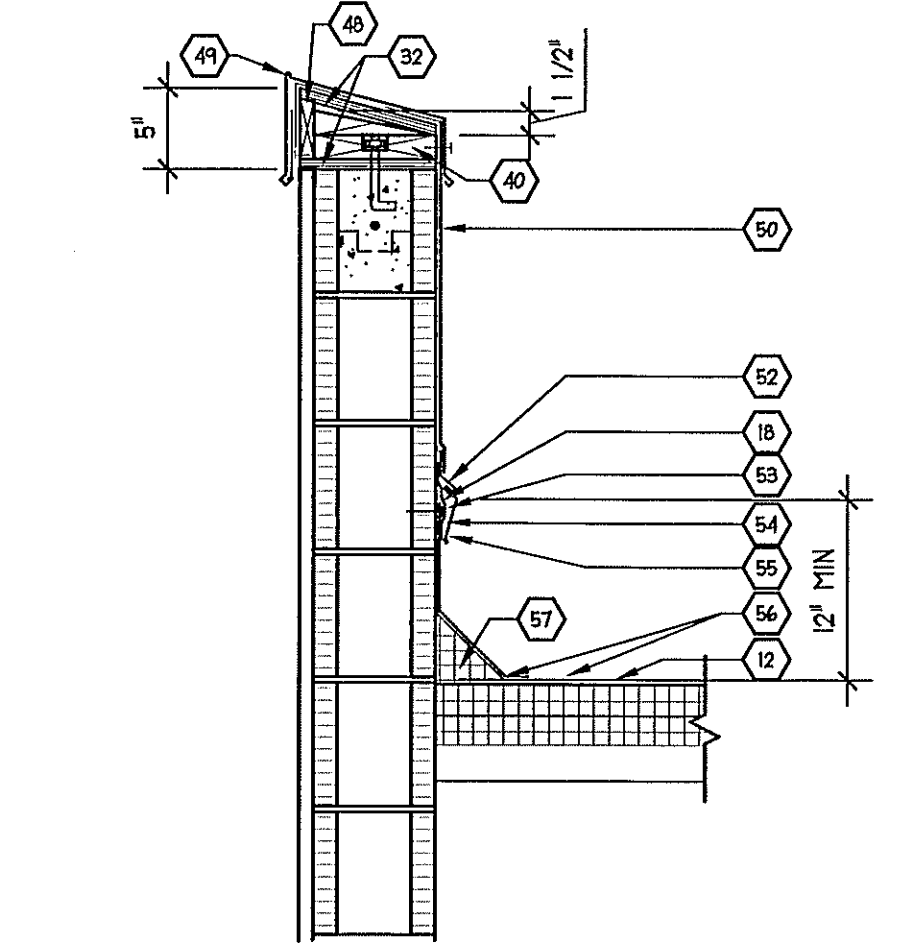
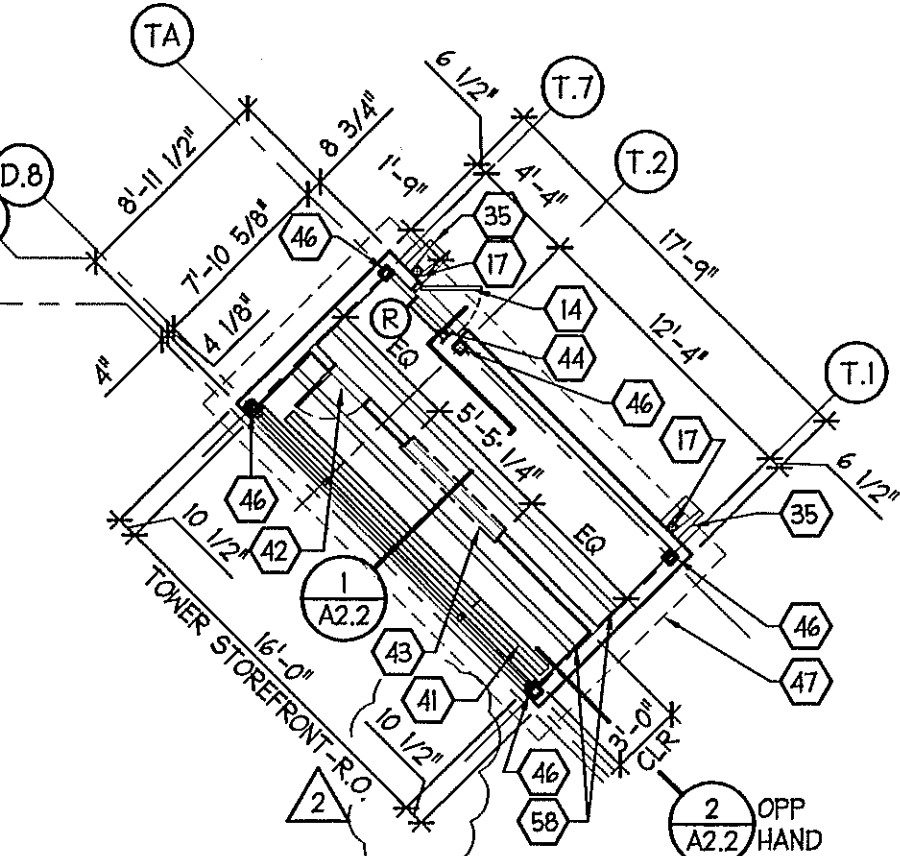
CRITERIA NOTES

- ROOFING SYSTEM MUST BE CLASS A FIRE-RATED.
- PLACEMENT OF ROOF-TOP UNITS SHOULD PROVIDE MINIMUM VISIBILITY FROM NEIGHBORING STREETS.
- BACKS OF PARAPETS MUST BE FLASHED DECK TO PARAPET CAP.
- PROVIDE UNOBSTRUCTED SITE LINE FOR SATELLITE DISH ASSEMBLY.
- SLOPE ROOF FOR DRAINAGE TOWARDS RECEIVING SIDE OF BUILDING. PIPE TO STORM SENER SYSTEM.
- MINIMUM 1/4" : 1'-0" ROOF SLOPE.
- ALL EXPOSED EXTERIOR BUILDING MATERIALS TO BE U.V. RATED.
- COORDINATE ALL ROOF OPENINGS TO AVOID CONFLICTS W/BAR JOISTS.

- COMPRESSOR UNIT. SEE DETAIL ON A4.5 AND SHEET M1.1.
- PIPE PENETRATION THROUGH ROOF FOR COOLER/FREEZER. SEE DETAIL ON A1.4 AND MECH. DWG'S. LINE OF COOLER / FREEZER BELOW.
- POST HYDRANT. SECURE TO STRUCTURE. SEE A1.4.
- VENT THRU ROOF. SEE PLBG PLAN SH1 P1.1 & A1/A.4. COORD IN FIELD LOCATION OF VTR'S TO BE A MIN OF 15'-0" AWAY FROM RTU.
- ROOF TOP HVAC UNIT
- SATELLITE DISH ANTENNA. SEE SHEET S0.1 OR S0.2.
- ROOF SCUTTLE. SEE DTL ON A4.5. COORD JOIST SPACING TO LADDER LOCATION.
- 1'-4" x 1'-0" H ROOF SCATTER. SEE DTL, THIS SHEET.
- DRIVE-THRU CANOPY. CENTERED IN DRIVE-THRU WALKWAY. SEE EXTERIOR ELEVATIONS.
- 4" EXHAUST PIPE UP FROM BELOW GRADE. REFER TO MECH DWGS.
- MODIFIED BITUMEN ROOFING SYSTEM. REFER TO SPECIFICATIONS 0710. PROVIDING DRAINAGE WITH DISCHARGE TO STORM SENER SYSTEM IS REQUIRED.
- ROOFTOP WALKWAY PADS TO BE PLACED AROUND ALL ROOFTOP EQUIP.
- 2'-6" x 3'-0" MTL ACCESS DOOR TO TOWER, SEE A4.3.
- 1'-0" x 10" H EMERGENCY OVERFLOW SCUPPER. SEE EXTERIOR ELEVATIONS
- PROVIDE CRICKETS AT ALL CURBS.
- 5"x5" PRE-FINISHED ALUM GUTTER W/ 4"x4" DOWNSPOUTS. SEE EXTERIOR ELEVATIONS
- SEALANT, CONTINUOUS.
- PROVIDE (3) 1" DIAMETER OVERFLOW HOLES.
- 4"x4" PRE-FINISHED ALUMINUM CANOPY DOWNSPOUT. SEE SHEET C6.2.
- REFINISHED 8"x6" DOWNSPOUT x 16"x10"x10" RECEIVER
- GALVANIZED SHEET METAL COUNTERFLASHING.
- GALVANIZED SHEET METAL SCUPPER.
- ROOF SIDE OF SCUPPER.
- GRAVEL STOP.
- FLASHING AT ROOF SIDE OF SCUPPER.
- SOLDER (TYP.).
- CRICKET INSULATION 2.5 TO 3.5:1 SLOPE, TYP
- BARREL TILE ROOF BY MONIERLIFETILE 'BARCELONA 900' COLOR 'PINTO BLEND' #B22069A
- ALL ROOFTOP EQUIP TO BE 10'-0" MIN FROM PARAPET WALL, TYP. RTU LOCATIONS ARE TO BE COORD W/ STRUCT ROOF FRAMING PLAN AS EXACT LOCATIONS MAY SHIFTED TO ALIGN W/ BAR JOIST LAYOUT. DIM'S INDICATED ARE FOR REFERENCE ONLY & NOT EXACT LOCATIONS
- PROVIDE 6'-0" CLEARANCE AROUND SATELLITE DISH TO ANY ROOFTOP STRUCTURES. VERIFY DISH HAS CLEAR SIGHT TO SATELLITE - SOUTH (SEE ANTENNA ORIENTATION DETAILS, ELECTRICAL DWGS AND SATELLITE MOUNT DETAILS)
- 5/8" PLYND, SLOPED TOWARDS ROOF
- IRRIGATION SENSOR MOUNTING. COORDINATE LOCATION PER MFR. RECOMMENDATIONS AND JOB SPECIFIC BUILDING ORIENTATION
- REFRIGERANT LINE PORTAL FOR COOLER/FREEZER.
- SPLASH BLOCK ON WALKWAY PAD BELOW WATER DISCHARGE ON ROOF.
- 4"x4" OPEN END GUTTER, SEE AWNING DETAIL ON C6.3
- DASHED LINE INDICATES WALL SURFACE BELOW
- ROUTE SCH 40 PVC CONDENSATE DRAIN LINES, SIZE AS SHOWN ON ROOF PLAN TO REAR OF BUILDING. SPILL CONDENSATE LINES INTO RAIN LEADER DOWNSPOUT. PROVIDE 6"x6" BLACK POLYCARBONATE PIPE SUPPORTS @ MAX 4'-0" O.C. MODEL NO. 1.5 BY MIRO INDUSTRIES (800) 768-6975. PROVIDE STAINLESS STEEL SCREWS & STRAPS TO PERMIT PIPE MOVEMENT. ADHERE PIPE SUPPORT BLOCK TO ROOF MEMBRANE IN A MANNER APPROVED BY THE MEMBRANE MFR.
- DASHED LINES INDICATE APPROX LOCATION OF STL BAR JOISTS BELOW. COORD W/ STRUCT ROOF FRAMING PLAN
- 2"x8" PT WD SILL PLATES ANCHORED TO K.O. BLK W/ 1/2" DIA ANCHOR BOLT W/ MIN 4" EMBED @ 48" O.C. & 8" FROM BUTT ENDS.
- FLOOR MOUNTED STRIP LIGHTING.
- ACCESS PANEL. 2'-0"x4'-3"-0"x4'-0" OFF FLOOR. PROVIDE FULL ON BACK FOR CLOSING.
- TOWER GRAPHIC. SEE SHEET A5.2.
- TOWER ACCESS LADDER. SEE SHEET A2.2.
- PIPE PORTAL FOR GAS PIPING TO HVAC UNITS. SEE DETAIL ON A1.4 AND MECH DWGS.
- STEEL COLUMN, REFER TO STRUCT DWGS
- LINE OF ROOF EDGE ABOVE
- 1" x 4" NAILER W/ CHAMFERED EDGE, AS REQUIRED.
- SLOPED METAL PARAPET CAP WITH COPED SEAMS PER NRCA 1.5 THRU JIZ. FASTEN WITH SCREW AND NEOPRENE GASKET. SEE A1.4.
- FULLY ADHERED EPDM ROOFING MEMBRANE TO EXTEND OVER PARAPET AND TERMINATE BEHIND CONT HOLD DOWN CLEAT, TYP.
- STANDING SEAM METAL ROOF BELOW, SEE AWNING DETAILS SHEET C6.3
- 24 GA SHEET METAL RECEIVER, TYP
- FASTENERS
- SEAL TOP OF COUNTER FLASHING
- REMOVABLE 24 GA SHEET METAL BASE FLASHING.
- MULTIPLE-PLY MEMBRANE BASE FLASHING (1/2" MIN HEIGHT)
- CONT FIBER CANT STRIP
- FLOOR VENTS, SEE A2.2.
- MONIERLIFETILE 'ZEPHYR' VENT, COLOR TO MATCH TILE



2 SCUPPER DETAIL
A1.3 SCALE N.T.S.



ROOF VENTING PER 2007 FBC SECTION 1203 STATES THE NET FREE VENTILATING AREA SHALL NOT BE LESS THAN 1/50 OF THE AREA OF THE SPACE VENTILATED, WITH 50 PERCENT (X) OF THE REQUIRED VENTILATING AREA PROVIDED AT THE UPPER PORTION OF THE SPACE.

ROOF VENTING REQUIREMENTS FOR MONIERLIFETILE 'ZEPHYR' VENT. ONE (1) VENT PER 300 SQ. FT. VENT AIR FLOW = 100 SQ. INCHES (0.694 SQ. FT.).
 (FORMULA: ATTIC AREA / 300 SQ. FT. x 144 / 0.5 / 100 = NO. OF REQUIRED VENTS.)

TOWER ROOF: 216 SQ. FT. / 300 x 144 / 0.5 / 100 = 2 VENTS REQ'D.

Rx ROOF: 120 SQ. FT. / 300 x 144 / 0.5 / 100 = 2 VENTS REQ'D.

ENTRY CANOPY: 1167 SQ. FT. / 300 x 144 / 0.5 / 100 = 11 VENTS REQ'D.

TOTAL SQ. FT. VENTED AREA:

TOWER:	SOFFIT VENT = 19.14 SQ. FT.
	ROOF VENT = 1.31 SQ. FT.
	20.55 SQ. FT.
Rx CANOPY:	SOFFIT VENT = 120.0 SQ. FT.
	ROOF VENT = 1.31 SQ. FT.
	121.31 SQ. FT.
ENTRY CANOPY:	SOFFIT VENT = 60.72 SQ. FT.
	ROOF VENT = 7.63 SQ. FT.
	68.35 SQ. FT.

NO.	DATE	DESCRIPTION
1	02.05.10	REVISED PER WGS 1ST REVIEW COMMENTS
2	04.05.10	REVISED PER WGS 2ND REVIEW COMMENTS

CERTIFICATION AND SEAL

I HEREBY CERTIFY THAT THIS PLAN AND SPECIFICATION WAS PREPARED BY ME OR UNDER MY DIRECT SUPERVISION AND THAT I AM A DULY REGISTERED ARCHITECT OR ENGINEER UNDER THE LAWS OF THE STATE OF FLORIDA AS SIGNIFIED BY MY HAND AND SEAL.

GUY F. FABER
FL LICENSE NO. AR0075323

PROJECT NAME
STORE #13450 (SWC) OF FOURAKER & NORMANDY JACKSONVILLE, FLORIDA

DRAWING TITLE
ROOF PLAN AND DETAILS

DATE:	11.30.09	HALGREENS STORE NO.	13450	DRAWING NO.	
DRAWN BY:	AB	SCALE:	AS NOTED		
REVIEWED BY:	SK	RELEASED TO CONSTRUCTION	04.05.10		