



FWH Architects
3336 Grand Blvd. Suite 102
Hollywood, Florida 34690
Ph. 727. 815. 3336
Fax 727. 815. 3337

PROJECT TYPE

DRAWINGS/SPECIFICATIONS BY:
 WALGREENS' CONSULTANT
 LANDLORD'S CONSULTANT

CONSTRUCTION WORK BY: (UNLESS NOTED OTHERWISE)
 WALGREENS' CONTRACTOR
 LANDLORD'S CONTRACTOR (TURNKEY CONSTRUCTION)

STORE		BUILDING	
NEW.....	<input checked="" type="checkbox"/>	NEW.....	<input type="checkbox"/>
REMODELING...	<input type="checkbox"/>	EXISTING.....	<input type="checkbox"/>
RELOCATION...	<input type="checkbox"/>	NEW SHELL ONLY	<input type="checkbox"/>
OTHER.....	<input type="checkbox"/>		

MECHANICAL KEYED NOTES

- HVAC ROOF-TOP UNIT. SEE GENERAL NOTES AND SCHEDULE ON DRAWING M2.2 FOR ADDITIONAL INFORMATION.
- S.A.D., CFM AND SIZE AS NOTED. FOUR WAY UNLESS OTHERWISE NOTED.
- LOCATE RAG OVER COMMUNICATION CABINET.
- NOT USED.
- S.A.G., CFM AND/OR SIZE AS NOTED.
- E.A.G., R.A.G. & T.A.G., CFM AND/OR SIZE AS NOTED.
- GAS SERVICE, METER, REGULATOR AND VALVES. PHYSICAL PROTECTION OF EQUIPMENT BY GENERAL CONTRACTOR.
- FLUE AIR EXHAUST THRU ROOF FOR GAS FIRED WATER HEATER. SEE SHEET P1.1. DETAILS 9/P2.1 & 11/P2.1. PROVIDED BY PLUMBING CONTRACTOR.
- MOUNT REGISTERS ON SPIRAL DUCTWORK. REGISTERS SHALL HAVE DAMPER AND SHALL BE INSTALLED SO THAT THE AIR SUPPLY IS DIRECTED DOWNWARD AS SHOWN ON DETAIL 2/M2.1.
- ROOF-TOP CONDENSING UNIT FOR WALK-IN COOLER/FREEZER.
- PIPE PORTAL FOR WALK-IN/COOLER/FREEZER CONDENSING UNIT REFRIGERANT AND ELECTRICAL LINES.
- AFTER AIR BALANCE OF RTU-2, SECURE RETURN DAMPER POSITION WITH SCREW(S).
- NOT USED.
- PIPE PORTAL FOR GAS PIPING TO HVAC UNITS ON ROOF. REFER TO ARCHITECTURAL DRAWINGS A1.3 AND A1.4. PROVIDE AN ACCESSIBLE ISOLATION VALVE, PIPE UNION DOWNSTREAM OF VALVE AND DIRT LEG OUTSIDE EACH HVAC UNIT IN ACCORDANCE WITH THE FUEL GAS CODES. DO NOT ROUTE GAS LINE THRU BOTTOM OR SIDE OF ROOF CURB. SEE DETAIL 9/M2.1 FOR FURTHER INFORMATION.
- ROOF MOUNTED EXHAUST FAN. SEE DETAIL 7/M2.1 & 8/M2.1. MAINTAIN A MINIMUM OF 10'-0" FROM ROOF EDGE, PER CODE.
- EVAPORATIVE UNIT. (FAN COIL) PROVIDE DX PIPING CONNECTION WITH ROOFTOP CONDENSING UNIT.
- ON INITIAL SETUP, THE SENSOR WITHIN THE THERMOSTAT FOR RTU-2 SHALL BE CONTROLLER. RETAIN THE REMOTE SENSOR IN SALES AREA FOR A FUTURE OPTION.
- OVERHEAD DOOR AIR CURTAIN, WALL MOUNTED AND SUPPORTED FROM BAR-JOIST. POSITION TO CLEAR THE DOOR AND INSTALL PER MANUFACTURER'S DIRECTION. SEE ARCHITECTURAL DRAWINGS FOR DETAILS.
- ELECTRICAL ROOM CONTAINS UPS OR TRANSFORMER, PROVIDE EXHAUST FAN WITH THERMOSTAT, FAN TO DISCHARGE TO THE OUTDOORS PER 501.2 F.M.C. INTERMITTENT THERMOSTAT CONTROLLED FAN WILL ENERGIZED ONLY DURING NIGHT SET BACK OF SALES AREA ROOF TOP UNIT.
- SEE ARCHITECTURAL ROOF PLAN FOR ROOF TOP UNIT PVC CONDENSATE DRAIN PIPING W/SIZES, ROUTED ABOVE ROOF FROM RTU'S TO ROOF STORM/RAIN WATER DRAIN.
- SALES FLOOR SENSOR TO BE MOUNTED ON BACKSIDE OF COLUMN SO IT IS NOT VISIBLE FROM FRONT DOOR.
- FIELD COORDINATE FINAL LOCATION OF CONTROLS WITH WALGREENS CONSTRUCTION MANAGER.

NOTES

GENERAL:

- REFER TO ALL OTHER PROJECTS, DRAWINGS AND SPECIFICATIONS FOR ADDITIONAL WORK OR CLARIFICATIONS.
- IN AREAS WITHOUT A FINISHED CEILING, MECHANICAL PIPING AND DUCT WORK SHALL NOT BE LOWER THAN 15 FT. COORDINATE LOCATION WITH STOCK ROOM SHELVING AND LIGHTING.
- NON-HVAC COMPRESSORS AND CONDENSERS SHALL BE FURNISHED BY WALGREENS.

EQUIPMENT:

- SEE ARCHITECTURAL DRAWINGS FOR HVAC ROOF CURB, ROOF COMPRESSOR CURB, PIPE PORTALS AND SUPPORT DETAILS.
- INSTALL HVAC UNITS LEVEL ON ROOF CURBS.
- OUTSIDE AIR INTAKE'S ON ROOF SHALL BE LOCATED A MINIMUM OF 15'-0" AWAY FROM ANY EXHAUST DUCT, BLOWER DISCHARGE, PLUMBING VENTS, ETC.
- HVAC UNITS TO INCLUDE FLEXIBLE CONNECTIONS.
- OUTSIDE AIR INTAKE TO BE SIZED FOR 100% OF OUTSIDE AIR WHEN AN ECONOMIZER SYSTEM IS PROVIDED.
- ALL OUTSIDE AND RETURN AIR DAMPERS FOR ECONOMIZER AND NON-ECONOMIZER UNITS SHALL BE MOTORIZED AND HAVE A LOW LEAK GASKET.
- PROVIDE LAMINATED BAKELITE NAME PLATES ON EACH HVAC UNIT AND LOCATE NEXT TO UNIT NAME TAG (RTU-1, ER-1, EF-1, ETC.).
- IMMEDIATELY AFTER AN HVAC UNIT IS INSTALLED, PROVIDE A MERV 8 OR BETTER TEMPORARY AIR FILTER OVER THE RETURN AIR INLET OF EACH HVAC UNIT AND/OR EACH RETURN AIR GRILLE AS APPLICABLE. REMOVE ONLY AFTER CONSTRUCTION IS COMPLETE.

CONDENSATE DRAIN SYSTEM:

- FOR ALL GEOGRAPHICAL LOCATIONS, PROVIDE COSTGARD DEVICE SYSTEM KIT ON EACH RTU, MANUFACTURED BY TRENT TECHNOLOGIES, INC. TYLER TEXAS, TELEPHONE # (903) 508-4845. PIPE AND FITTINGS SHALL BE UV STABILIZED AND RECOGNIZED BY UL AS SUITABLE FOR OUTDOOR USE.
- RUN CONDENSATE PIPING FROM RTUs TO AN APPROVED RECEPTOR. THE PREFERRED IS TO RUN THE CONDENSATE DRAIN PIPING ABOVE THE ROOF SUPPORTED ON 6"x6" BLACK POLYCARBONATE PIPE SUPPORTS, MODEL NO. 1.5 BY MIRO INDUSTRIES, TELEPHONE (800) 768-6978. PROVIDE STAINLESS STEEL SCREWS AND STRIP TO PERMIT PIPE MOVEMENT. POSITION THE SUPPORT PIPING NOT MORE THAN 6 FT. APART. SECURE THE PIPE SUPPORT TO ROOF MEMBRANE IN A MANNER APPROVED BY THE MEMBRANE MANUFACTURER.
- RUN CONDENSATE PIPING BELOW THE ROOF IF CODE OR LOCAL AUTHORITIES PROHIBIT PIPING ABOVE THE ROOF OR IF DISCHARGING ONTO THE ROOF IS NOT ALLOWED. USE A PORTAL PLUS PIPE PORTAL TO PENETRATE THE ROOF. PROVIDE A HIGHER THAN NORMAL ROOF CURB TO RAISE THE RTU HIGH ENOUGH TO MAKE THIS SCHEME WORK.
- TRANE UNITS AND SOME CARRIER RTUs (13 TONS AND ABOVE) ARE NOT DELIVERED WITH DRAIN CONNECTIONS IN THE BOTTOM OF THE DRAIN PAN. DRAIN CONNECTIONS FOR THESE UNITS MUST BE MADE IN THE FIELD. DETAILED INSTALLATION INSTRUCTIONS ARE PROVIDED WITH EACH SHIPMENT OF COSTGARD DRAIN SEAL.
- PROVIDE CONDENSATE PIPING, DRAINAGE FITTINGS AND CLEANOUTS, REFER TO DETAIL 6/M2.1 FOR SIZING. PROVIDE SCHEDULE 40 MIN. PVC OR ABS UNLESS CODE REQUIRES OTHERWISE. CONDENSATE PIPING AND COMPONENTS LOCATED OUTSIDE THE BUILDING SHALL BE WEATHER, SUNLIGHT, AND UV RESISTANT.
- LOCATE CONDENSATE DRAIN PIPING SO IT WILL NOT INTERFERE WITH THE REQUIRED ACCESS TO THE RTUs.
- INSULATE ALL CONDENSATE DRAIN PIPING INSIDE THE BUILDING TO INCLUDE MAINS, BRANCHES, VENTS AND COSTGARD.

AIR DISTRIBUTION:

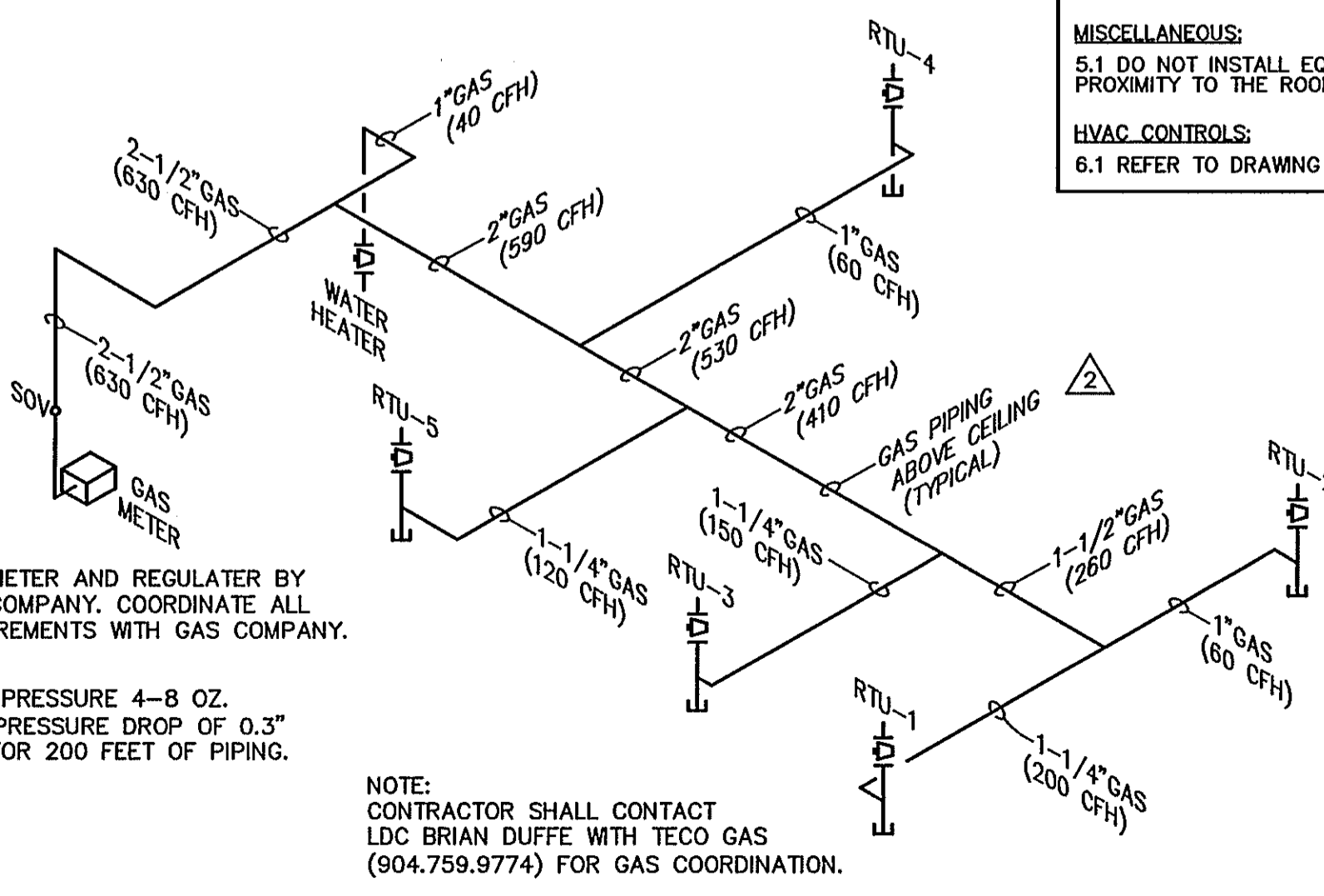
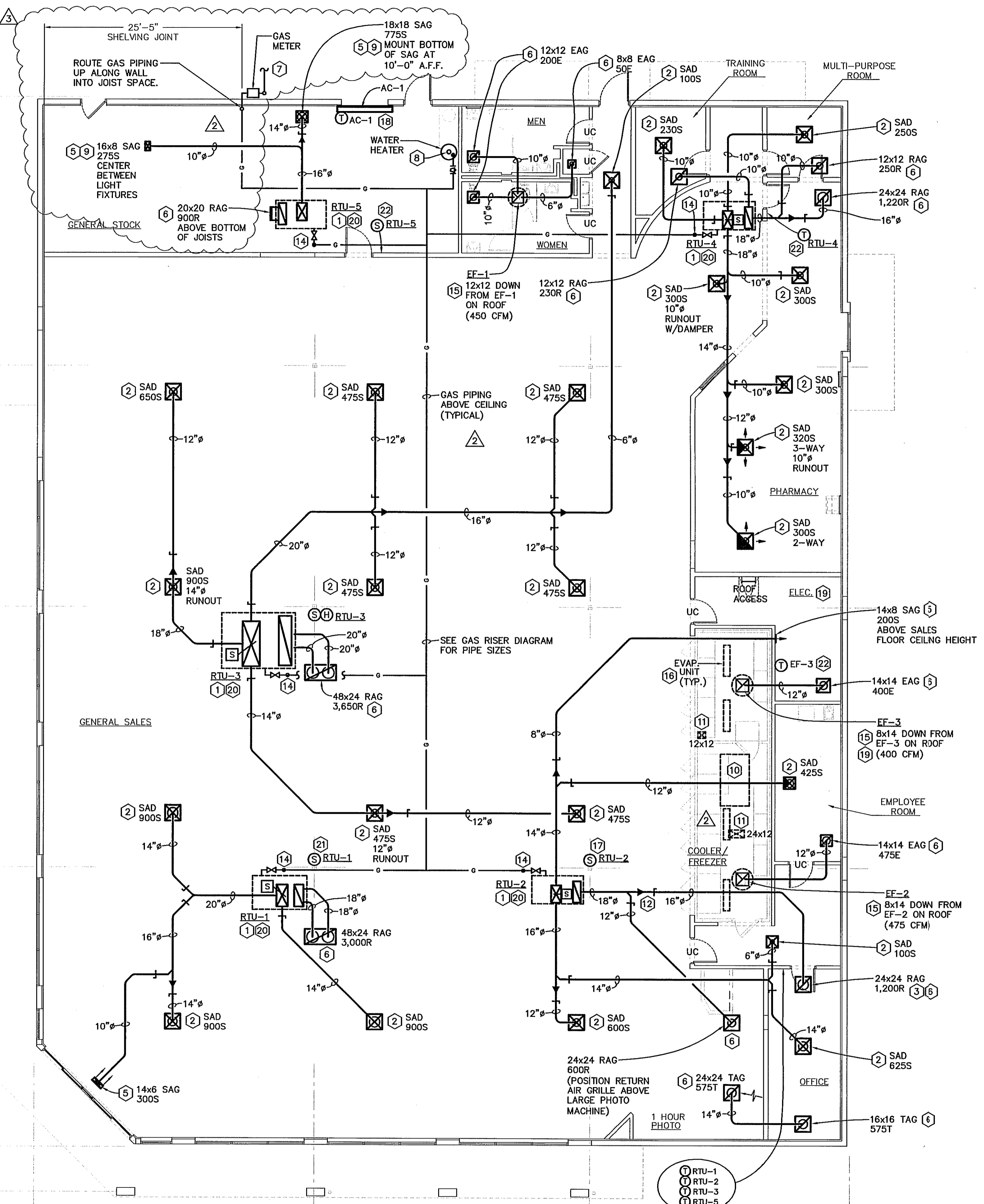
- DUCTWORK TO BE GALVANIZED SHEET METAL SPIRAL PER SWACNA REFER TO SPECIFICATION 15860. LINED DUCTWORK IS NOT PERMITTED.
- PROVIDE FIRE DAMPERS WITH ACCESS PANELS PER LOCAL CODE AND AS NOTED.
- FLEXIBLE DUCT LENGTH SHALL NOT EXCEED 3'-0". USE ONLY ON FINAL SUPPLY AIR DIFFUSER AND FROM THE RETURN AIR GRILLE TO THE METAL DUCTWORK. FOR BOTH CASES, 90° TURNS ARE NOT ALLOWED - OFFSET ANGLES SHALL BE KEPT TO A MINIMUM. SEE DETAIL 3/M2.1.
- DO NOT INSTALL SUPPLY AIR DIFFUSERS IN CEILING PANEL ADJACENT TO A ROW OF LIGHT FIXTURES. LOCATE DIFFUSERS IN ACCORDANCE WITH THE REFLECTED CEILING PLAN SHOWN ON THE ARCHITECTURAL DRAWING.
- PAINT THE INTERIOR SURFACE OF DUCTS (WHERE VISIBLE) THROUGH GRILLES, DIFFUSERS, ETC. USE FLAT 'DM' (DIRECT TO METAL), NON-SPECULAR BLACK PAINT.
- SUPPLY AND/OR RETURN AIR CEILING PLENUMS ARE NOT PERMITTED.
- ALL VOLUME DAMPERS SHALL BE FLAGGED WITH STREAMERS FOR EASY IDENTIFICATION ESPECIALLY WHEN COVERED WITH INSULATION.
- AIR BALANCING: BALANCE AIR TO INDICATED QUANTITIES WITHIN A TOLERANCE OF PLUS OR MINUS 10%.

MISCELLANEOUS:

- DO NOT INSTALL EQUIPMENT, DUCTWORK, PIPE, CONDUIT IN PROXIMITY TO THE ROOF HATCH LADDER AREA.

HVAC CONTROLS:

- REFER TO DRAWING M3.1 FOR FURTHER INFORMATION.



GAS RISER DIAGRAM
NO SCALE

FLOOR PLAN - MECHANICAL
SCALE: 1/8"=1'-0"
9084

I HEREBY CERTIFY THAT THIS PLAN AND SPECIFICATION WAS PREPARED BY ME OR UNDER MY DIRECT SUPERVISION AND THAT I AM A DULY REGISTERED ARCHITECT OR ENGINEER UNDER THE LAWS OF THE STATE OF FLORIDA AS SIGNIFIED BY MY HAND AND SEAL.

RON R. RENNA
FL LICENSE NO. PE6607

PROJECT NAME
**STORE #13450
SWG OF FOURAKER & NORMANDY
JACKSONVILLE, FLORIDA**

DRAWING TITLE
MECHANICAL FLOOR PLAN

DATE:	11.30.01	WALGREENS STORE NO.	13450	DRAWING NO.	M1.1
DRAWN BY:	JK	SCALE:	AS NOTED	RELEASED TO CONSTRUCTION	FWH PROJECT NO. 0913
REVIEWED BY:	RR				

Renna Enterprises, Inc.
P.E. # 56067 Ronald R. Renna, P.E.
AUTH # 0000831 Consulting Engineers
3231 Drone Field Road Ph. (863) 646 1258
Lakeland, FL 33811 Fax. (863) 646 8881