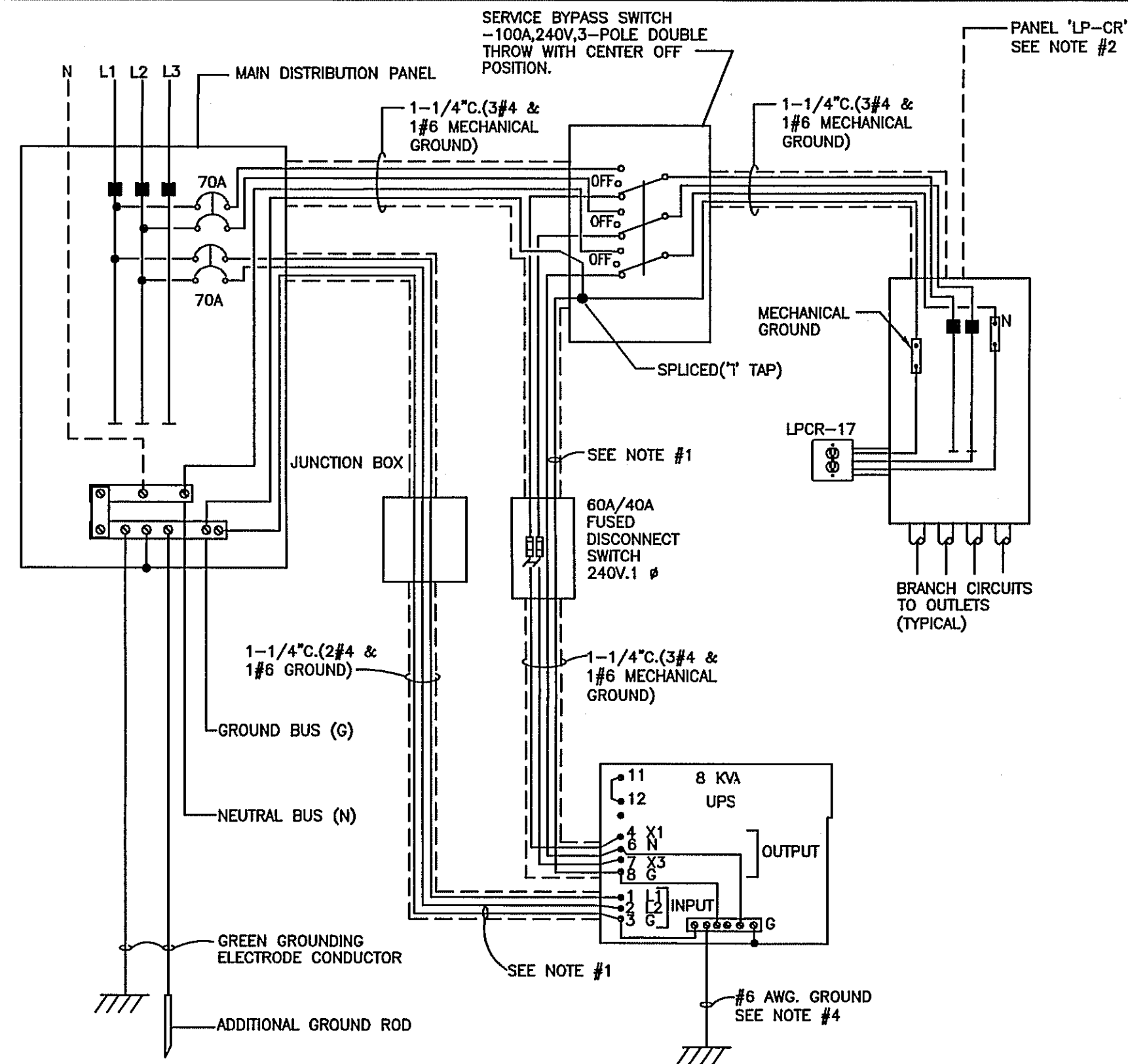


- NOTES:
- FOR WIRING DIAGRAM SHOWING FEED FROM MAIN PANELBOARD OR DISTRIBUTION PANEL, SEE DETAIL 2/E2.2.
 - PROVIDE OUTLET FOR COMMUNICATION WITH UPS.

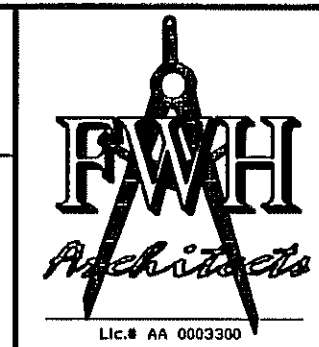
1
E2.2



- NOTES:
- GROUND CONDUCTORS FROM UPS UNIT TO PANEL 'LP-CR' AND FROM MAIN DISTRIBUTION PANEL TO BE CONTINUOUS.
 - PANEL 'LP-CR' - 225A.MLO.120/240V.1Ø.4W. 42 CIRCUITS WITH 20A.1P. BREAKERS WITH 'LOCK-ON' HARDWARE FOR INDIVIDUAL BRANCH CIRCUITS OVERCURRENT PROTECTION WITH GROUND BUS.
 - LOADS FOR BOTH PHASES OF PANEL 'LP-CR' SHALL BE BALANCED. UN-BALANCED PHASES WILL CAUSE UPS TO OPERATE ABNORMALLY.
 - PROVIDE CONTINUOUS GREEN GROUNDING ELECTRODE CONDUCTOR. RUN SEPARATELY IN CONDUIT AND CONNECT TO NEAREST AVAILABLE BUILDING GROUNDING ELECTRODE.
 - SEE MANUFACTURER'S INSTALLATION GUIDE FOR ADDITIONAL INFORMATION.

2
E2.2

- APPROVED MANUFACTURER OF UNINTERRUPTIBLE POWER SUPPLY (UPS) UNIT: TOSHIBA, 1600EP UPS SERIES, MODEL NO. UE302L0B0C81TWGN. CONTACT TOSHIBA RETAIL ACCOUNT MGR. AT (800) 231-1412 X3605. (NO SUBSTITUTIONS).
- UPS UNIT SHALL:
 - CONSIST OF THE RECTIFIER/CHARGER, BATTERY BANK, INVERTER, STATIC TRANSFER SWITCH FOR CONTINUOUS IN-PHASE AC POWER, AND BUILT-IN INTERNAL BYPASS SWITCH.
 - HAVE AN INPUT VOLTAGE AS SHOWN AND AN OUTPUT VOLTAGE OF 120/240V.1PH.60HZ. TO SUPPLY COMPUTER-TYPE LOADS AND THEREFORE, SHALL HAVE POWER CONDITIONING (COMMON & NORMAL MODE) CAPABILITIES AT ALL TIMES. (THE UPS UNIT IS SIZED AS NOTED ON THIS DRAWING. REFER TO ASSOCIATED DETAILS FOR ADDITIONAL INFORMATION.)
 - HAVE FAILURE ALARMS (eg. HIGH AND LOW AC OUTPUT AND OVERLOAD) AND STATUS INDICATORS.
 - HAVE RS232 INTERFACE OR SNMP/TCP-IP CAPABILITY FOR REMOTE SITE DATA ACQUISITION AND DIAGNOSTICS. THE TYPE OF DATA OBTAINED OFF-SITE SHALL BE EQUIVALENT TO DATA ACQUIRED ON-SITE.
 - HAVE RS232 INTERFACING CAPABILITY FOR LOW BATTERY UPS SHUT DOWN.
 - BE COMPATIBLE WITH AN APPROVED ENGINE-GENERATOR SYSTEM (ONAN, KOHLER).
 - BE UNDERWRITERS LABORATORY (UL) LISTED OR ETL LISTED BY SPECIAL REQUEST AND REVIEW BY WALGREENS' FACILITIES PLANNING AND DESIGN.
- UPS BATTERY OR BATTERIES SHALL BE THE SEALED, RE-CHARGEABLE, MAINTENANCE-FREE TYPE WITH A MINIMUM 10 MINUTES (CONTINUOUS AT FULL LOAD/ 30 MIN (HALF LOAD) OF BACK-UP TIME AND SHALL HAVE A MINIMUM 8 YEAR EXPECTED LIFE.
- SPECIFICATION CRITERIA:
 - VOLTAGE REGULATION: ±3%
 - OUTPUT RATINGS 8 KVA.
 - HARMONIC DISTORTION: OUTPUT VOLTAGE HARMONIC DISTORTION MAXIMUM 3% INPUT CURRENT HARMONIC DISTORTION MAXIMUM 5%.
 - FREQUENCY: 60±.1% HZ
 - NOISE ATTENUATION: COMMON MODE 120db; NORMAL MODE 60db; 250:1 VOLTAGE SPIKE ATTENUATION.
 - ISOLATION: COMPLETE ISOLATION (INPUT TO OUTPUT), LOW IMPEDANCE ISOLATION TRANSFORMER.
- THE ELECTRICAL CONTRACTOR SHALL PURCHASE AND INSTALL THE UPS. THE PURCHASE ORDER WILL BE ISSUED BY THE ELECTRICAL CONTRACTOR TO TOSHIBA.
- PURCHASE TO INCLUDE START-UP SERVICE BY TOSHIBA.



FWH Architects
3336 Grand Blvd. Suite 102
Holiday, Florida 34600
Ph. 727. 815. 3336
Fax 727. 815. 3337

PROJECT TYPE

- DRAWINGS/SPECIFICATIONS BY:
- WALGREENS' CONSULTANT
 - LANDLORD'S CONSULTANT
- CONSTRUCTION WORK BY: (UNLESS NOTED OTHERWISE)
- WALGREENS' CONTRACTOR
 - LANDLORD'S CONTRACTOR (TURNKEY CONSTRUCTION)

| STORE | BUILDING |
|---------------|----------------|
| NEW..... | NEW..... |
| REMODELING... | EXISTING..... |
| RELOCATION... | NEW SHELL ONLY |
| OTHER..... | |

CHEHAYEB & ASSOCIATES, INC.
CONSULTING ENGINEERS

3702 AZEELE ST. TAMPA, FL 33609 (913) 876-1415 (fax) 876-0913

LIC. #49521 SOUHEIL CHEHAYEB 09-97 CERT. #7340

| PANEL LP-CR | | | | | | | | | | | | | |
|-------------|---|------------|----------|-------|----------|-----------|----------|----|----------|-------|-------|--|----------|
| SPACES | MOUNTING | LOCATION | MAIN LUG | MAIN | N/A | VOLTAGE | MAIN BUS | | FEED | | | | |
| 42 | SURFACE | ELEC. ROOM | ONLY | 225A | BREAKER | 120/208V. | 1Ø | 3W | RAT. | 225A | TOP | | |
| CKT. NO. | DESCRIPTION | LOADS | A Ø | B Ø | BKR SIZE | POLE | A | B | BKR SIZE | POLE | LOADS | DESCRIPTION | CKT. NO. |
| L 1 | OFFICE SYSTEM EQUIPMENT | 200W | | | 20 | 1 | | | 20 | 1 | | SPARE | 2 |
| L 3 | OFFICE SYSTEM EQUIPMENT | 200W | | | 20 | 1 | | | 20 | 1 | 200W | FRONT CASH REGISTER | 4 |
| L 5 | (2) FRONT CASH REGISTERS | 200W | | | 20 | 1 | | | 20 | 1 | | SPARE | 6 |
| L 7 | (3) RX FRONT CASH REGISTERS | 200W | | | 20 | 1 | | | 20 | 1 | 250W | RX "VERIFICATION" TERMINALS | 8 |
| L 9 | (2) 1-HR PHOTO CASH REGISTERS | 200W | | | 20 | 1 | | | 20 | 1 | 250W | RX "CONSULTATION" TERMINALS | 10 |
| L 11 | COSMETICS CASH REGISTER | 200W | | | 20 | 1 | | | 20 | 1 | 250W | RX COMMUNICATIONS CABINET | 12 |
| L 13 | FUTURE PRESCRIPTION FILLING ROBOT | 250W | | | 20 | 1 | | | 20 | 1 | 250W | RX COMMUNICATIONS CABINET | 14 |
| L 15 | COVERT CCTV SYSTEM | 300W | | | 20 | 1 | | | 20 | 1 | 300W | TRAINING AND MULTIPURPOSE ROOM TERMINALS | 16 |
| L 17 | BURGLAR/TELEPHONE/SOUND SYSTEM UPS COMM MODULE/ND/MYE | 820W | | | 20 | 1 | | | 20 | 1 | 350W | RX CAMERA | 18 |
| L 19 | TIME/ATTENDANCE (ELECTRONIC TIME CLOCK) | 300W | | | 15 | 1 | | | 20 | 1 | 300W | OFFICE COMMUNICATION CABINET | 20 |
| L 21 | FIRE ALARM SYSTEM | 200W | | | 20 | 1 | | | 20 | 1 | 300W | SAT ANTENNA-DIGITAL INTERFACE UNIT (DIU/O) | 22 |
| L 23 | SPARE | | | | 20 | 1 | | | 20 | 1 | 30W | LIGHTING CONTROLS (FOR SIEMENS PANEL LV5) | 24 |
| L 25 | AUTOMATED TELLER MACHINE (ATM) | 200W | | | 15 | 1 | | | 20 | 1 | 300W | RX "DRIVE-THRU" TERMINAL | 26 |
| L 27 | RX DRIVE-THRU CASH REGISTER | | | 100W | 20 | 1 | | | 20 | 1 | 300W | OFFICE COMMUNICATION CABINET | 28 |
| L 29 | PATIENT SERVICES/ FUTURE CLINIC TERMINAL | 200W | | | 20 | 1 | | | 20 | 1 | 300W | OFFICE COMMUNICATION CABINET | 30 |
| L 31 | Rx "VERIFICATION" TERMINAL | | | 250W | 20 | 1 | | | 20 | 1 | 250W | Rx "FILLING" TERMINALS | 32 |
| L 33 | DHL PRINTER AND SCALE | 300W | | | 20 | 1 | | | 20 | 1 | 250W | Rx "FILLING" TERMINALS | 34 |
| L 35 | SPACE ONLY | | | | 20 | 1 | | | | | | SPACE ONLY | 36 |
| L 37 | SPACE ONLY | | | | | | | | | | | SPACE ONLY | 38 |
| L 39 | SPACE ONLY | | | | | | | | | | | SPACE ONLY | 40 |
| L 41 | SPACE ONLY | | | | | | | | | | | SPACE ONLY | 42 |
| | | | | TOTAL | 2520W | 1550W | | | TOTAL | 2000W | 1880W | TOTAL PANEL KW = 7.9 | |

L = LOCK-ON, TRIP FREE BREAKER HANDLE

| NO. | DATE | DESCRIPTION |
|-----|----------|--------------------------------------|
| Δ | 04.05.10 | REVISED PER WGS 2ND. REVIEW COMMENTS |

I HEREBY CERTIFY THAT THIS PLAN AND SPECIFICATION WERE PREPARED BY ME OR UNDER MY DIRECT SUPERVISION AND THAT I AM A DULY REGISTERED ARCHITECT OR ENGINEER UNDER THE LAWS OF THE STATE OF FLORIDA AS SIGNIFIED BY MY HAND AND SEAL.

PROJECT NAME
STORE #13450
SWC OF FOURAKER & NORMANDY
JACKSONVILLE, FLORIDA

DRAWING TITLE
UNINTERRUPTIBLE POWER SYSTEM AND PANEL SCHEDULE

| | | |
|-------------------|---------------------------|----------------------|
| DATE: 11.30.09 | WALGREENS STORE NO. 13450 | DRAWING NO. |
| DRAWN BY: P.M. | SCALE: AS SHOWN | E2.2 |
| REVIEWED BY: S.C. | RELEASED TO CONSTRUCTION | FWH PROJECT NO. 0913 |