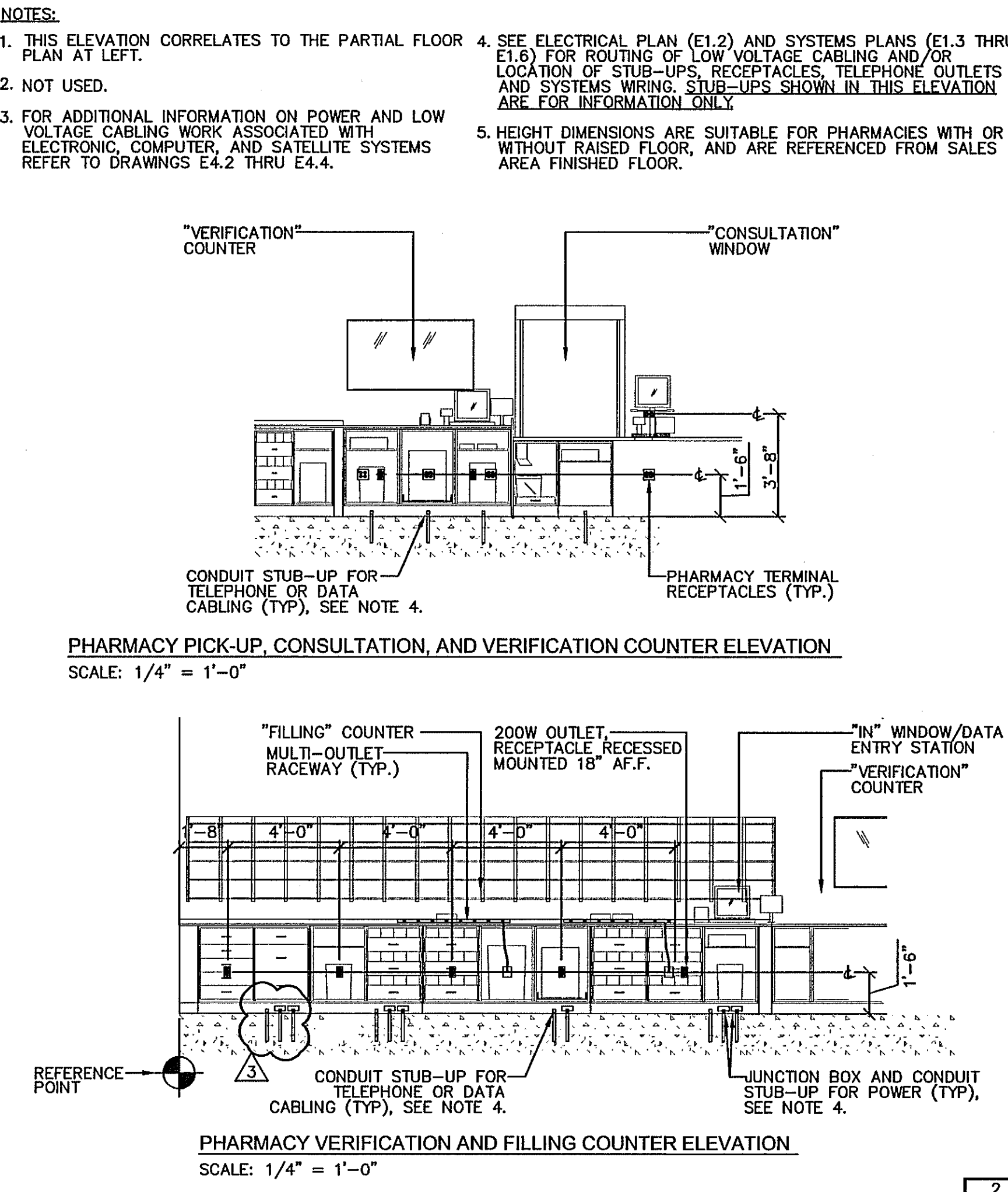


**NOTES:**  
 1. THIS PARTIAL FLOOR PLAN REPRESENTS A WALGREEN'S CRITERIA/STANDARD LAYOUT. UTILIZE EXACT CONFIGURATION OF EQUIPMENT BASED ON THE ACTUAL 'D-1' PLAN.  
 2. SEE DETAILS 1, 4 & 5/E4.4 FOR CASH REGISTER OUTLET MOUNTING INFORMATION.  
 3. ETHERNET (CATEGORY 5) CABLES. SEE DRAWING E1.3 FOR FURTHER INFORMATION.

**PARTIAL KEY NOTES APPLICABLE TO PHARMACY ENLARGED PLAN:**

- ① ONE(1) 20A.120V.1Ø CIRCUIT FOR CASH REGISTER (CR) LOCATION. SEE DETAILS 6, 7 & 10/E4.3, 1, 4, AND/OR 5/E4.4 FOR OUTLET MOUNTING. HOMERUN BACK TO PANEL "LP-CR".
- ③ ONE(1) 20A.120V.1Ø CIRCUIT FOR PHARMACY TERMINAL RECEPTACLES. CIRCUIT FROM PANEL "LP-CR". SEE DETAIL 10/E4.4 AND DETAIL 2/E4.3 FOR MOUNTING REFERENCE.
- ①⑦ ONE(1) 20A.120V.1Ø SATELLITE DIGITAL INTERFACE UNIT (DIU) CIRCUIT FROM PANEL "LP-CR". SEE DETAIL 13/E4.4 FOR ADDITIONAL INFORMATION.
- ③⑩ 500W OUTLET, RECEPTACLE 1'-6" A.F.F. FOR PHARMACY BIOLOGICAL REFRIGERATOR. PROVIDE LOCK-ON CIRCUIT BREAKER.
- ③① 200W OUTLET, RECEPTACLE 3'-8" A.F.F. FLUSH ABOVE WORK COUNTER, UNLESS NOTED OTHERWISE. SEE DETAIL 2/E4.3.
- ③③ 1.5A. 120V OUTLET ABOVE PHARMACY CEILING FOR MOTORIZED ROLL-DOWN SHUTTER, WITH SWITCH (FURNISH WITH UNIT) MOUNTED 3'-8" UP AS SHOWN, UNLESS NOTED OTHERWISE.
- ⑤⑩ TWO(2) 20A.120V CIRCUITS FOR DRIVE-THRU WINDOW AUDIO SYSTEM AND DRIVE ALERT. MOUNT JUNCTION BOX 1'-6" A.F.F. INSIDE DRIVE-THRU WINDOW UNIT. SEE DETAIL 1/E4.3.
- ⑥⑩ 200W OUTLET, WITH RECEPTACLE MOUNTED INSIDE CASH REGISTER STAND. REFER TO DETAILS 6 & 7/E4.3, 1, 4, AND/OR 5/E4.4 FOR OUTLET MOUNTING.
- ⑥① DRIVE-ALERT SYSTEM: ELECTRICAL CONTRACTOR TO FURNISH AND INSTALL MODEL DA-500 WITH DA-655 DRIVE-ALERT CHIME (CHIME MOUNTED ABOVE DRIVE-THRU WINDOW). INSTALL SENSOR IN THE CONCRETE CURB ALONG DRIVE-THRU WALL, AS SHOWN ON DRAWING A4.4 OR A4.4D. SYSTEM SHALL BE PURCHASED FROM A.D.I. DISTRIBUTORS @ (800) 388-9505. (NOTE: ONCE INSTALLED, ELECTRICAL CONTRACTOR SHALL TEST THE SYSTEM BY DRIVING A VEHICLE IN THE DRIVE-THRU LANE, ADJUST SENSITIVITY AND "BLANKET" ZONE AS REQUIRED UNTIL SYSTEM DETECTS THE VEHICLE ACCORDINGLY.)
- ⑦① TWO (2) 20A.120V.1Ø CIRCUITS FROM PANEL "LP-CR" FOR RX COMMUNICATION EQUIPMENT RECEPTACLES.
- ⑦⑤ NOT USED
- ⑧① 1000W OUTLET WITH SOLID CONNECTION TO 4'-0" MULTI-OUTLET RACEWAY ASSEMBLY (PLUGMOLD OR PLUGTRAK), MOUNT ON RX "FILLING" COUNTER BACKSPLASH (RACEWAY FLUSH WITH TOP OF BACKSPLASH). RECEPTACLES SHALL BE 6" ON CENTER.
- ⑧② ONE(1) 20A.120V.1Ø CIRCUIT FROM PANEL "LP-CR" (WITH WIRES COILED INSIDE JUNCTION BOX) MOUNTED ABOVE CEILING FOR FUTURE PHARMACY ROBOTIC'S POWER. (COORDINATE WITH REFLECTED CEILING PLAN.)
- ⑧⑦ ONE (1) 20A.120V.1Ø CIRCUIT FROM PANEL "LP-CR" FOR CCTV CAMERA. CONNECT TO DUPLEX RECEPTACLE MOUNTED ABOVE PHARMACY CEILING.
- ⑧⑨ ELECTRICAL CONTRACTOR TO FURNISH AND INSTALL ONE (1) WEATHERPROOF JUNCTION BOX (RECESS MOUNT) WITH BLANK COVERPLATE AND 1" CONDUIT STUB INSIDE PHARMACY, BELOW DRIVE-THRU WINDOW FOR FUTURE INTERCOM GREETING STATION.



**NOTES:**  
 1. THIS ELEVATION CORRELATES TO THE PARTIAL FLOOR PLAN AT LEFT.  
 2. NOT USED.  
 3. FOR ADDITIONAL INFORMATION ON POWER AND LOW VOLTAGE CABLING WORK ASSOCIATED WITH ELECTRONIC, COMPUTER, AND SATELLITE SYSTEMS REFER TO DRAWINGS E4.2 THRU E4.4.  
 4. SEE ELECTRICAL PLAN (E1.2) AND SYSTEMS PLANS (E1.3 THRU E1.6) FOR ROUTING OF LOW VOLTAGE CABLING AND/OR LOCATION OF STUB-UPS, RECEPTACLES, TELEPHONE OUTLETS AND SYSTEMS WIRING. STUB-UPS SHOWN IN THIS ELEVATION ARE FOR INFORMATION ONLY.  
 5. HEIGHT DIMENSIONS ARE SUITABLE FOR PHARMACIES WITH OR WITHOUT RAISED FLOOR, AND ARE REFERENCED FROM SALES AREA FINISHED FLOOR.

PHARMACY PICK-UP, CONSULTATION, AND VERIFICATION COUNTER ELEVATION  
 SCALE: 1/4" = 1'-0"

PHARMACY VERIFICATION AND FILLING COUNTER ELEVATION  
 SCALE: 1/4" = 1'-0"

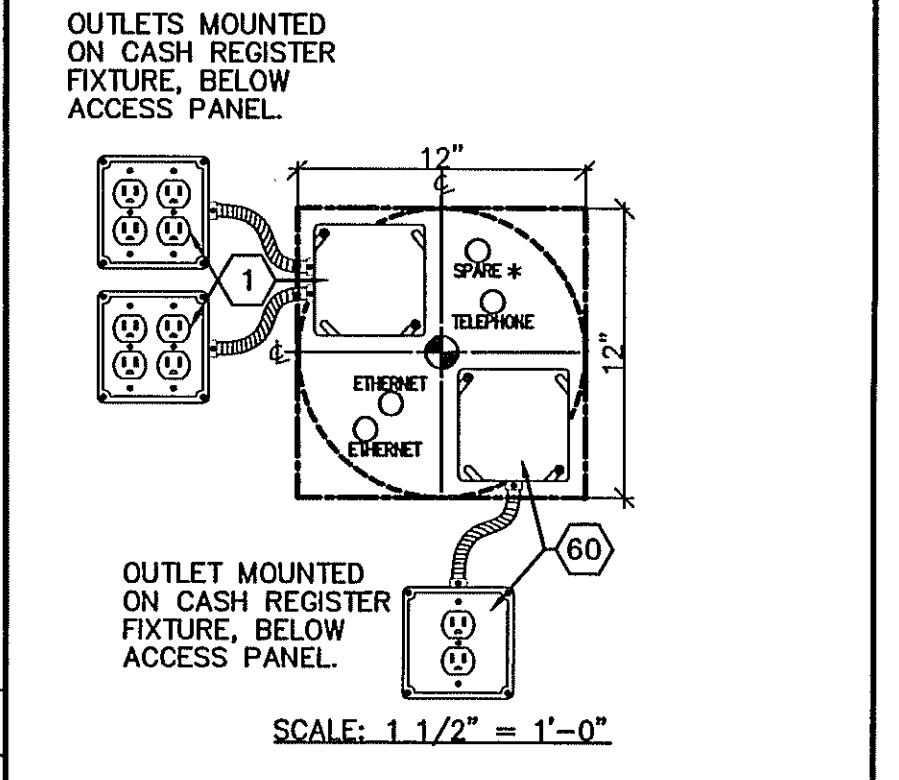
**FWH Architects**  
 3336 Grand Blvd, Suite 102  
 Holiday, Florida 34690  
 Ph. 727. 815. 3336  
 Fax 727. 815. 3337

**PROJECT TYPE**  
 DRAWINGS/SPECIFICATIONS BY:  
 WALGREENS' CONSULTANT  
 LANDLORD'S CONSULTANT  
 CONSTRUCTION WORK BY: (UNLESS NOTED OTHERWISE)  
 WALGREENS' CONTRACTOR  
 LANDLORD'S CONTRACTOR (TURNKEY CONSTRUCTION)

**STORE BUILDING**  
 NEW.....  
 RECYCLING.....  
 RELOCATION.....  
 OTHER.....

**CHEHAYEB & ASSOCIATES, INC.**  
 CONSULTING ENGINEERS  
 3702 AZEELA ST.  
 TAMPA, FL 33609  
 LIC. #49521    SOUHEIL CHEHAYEB    CERT. #7340  
 09-97    (813) 876-1415    (813) 876-0913

**RX & PHOTO CASH REGISTER CIRCUIT STUB-UP DETAIL**



**RX SERVICES:**  
 1-CHECKPOINT  
 2-REGISTER  
 3-PC  
 4-MONITOR  
 5-VISION  
 6-CATALINA  
 7-SPARE  
 8-SPARE

**PHOTO SERVICES:**  
 1-CHECKPOINT  
 2-REGISTER  
 3-PC  
 4-MONITOR  
 5-CATALINA  
 6-TMBB PRINTER  
 7-SPARE  
 8-SPARE

②	02.05.10	REVISED PER WGS FIRST REVIEW COMMENTS
③	04.05.10	REVISED PER WGS 2ND. REVIEW COMMENTS

NO.	DATE	DESCRIPTION

**CERTIFICATION AND SEAL**

I HEREBY CERTIFY THAT THIS PLAN AND SPECIFICATION WERE PREPARED BY ME OR UNDER MY DIRECT SUPERVISION AND THAT I AM A DULY REGISTERED ARCHITECT OR ENGINEER UNDER THE LAWS OF THE STATE OF FLORIDA AS SIGNIFIED BY MY HAND AND SEAL.

**PROJECT NAME**  
 STORE #13450  
 SWC OF FOURAKER & NORMANDY  
 JACKSONVILLE, FLORIDA

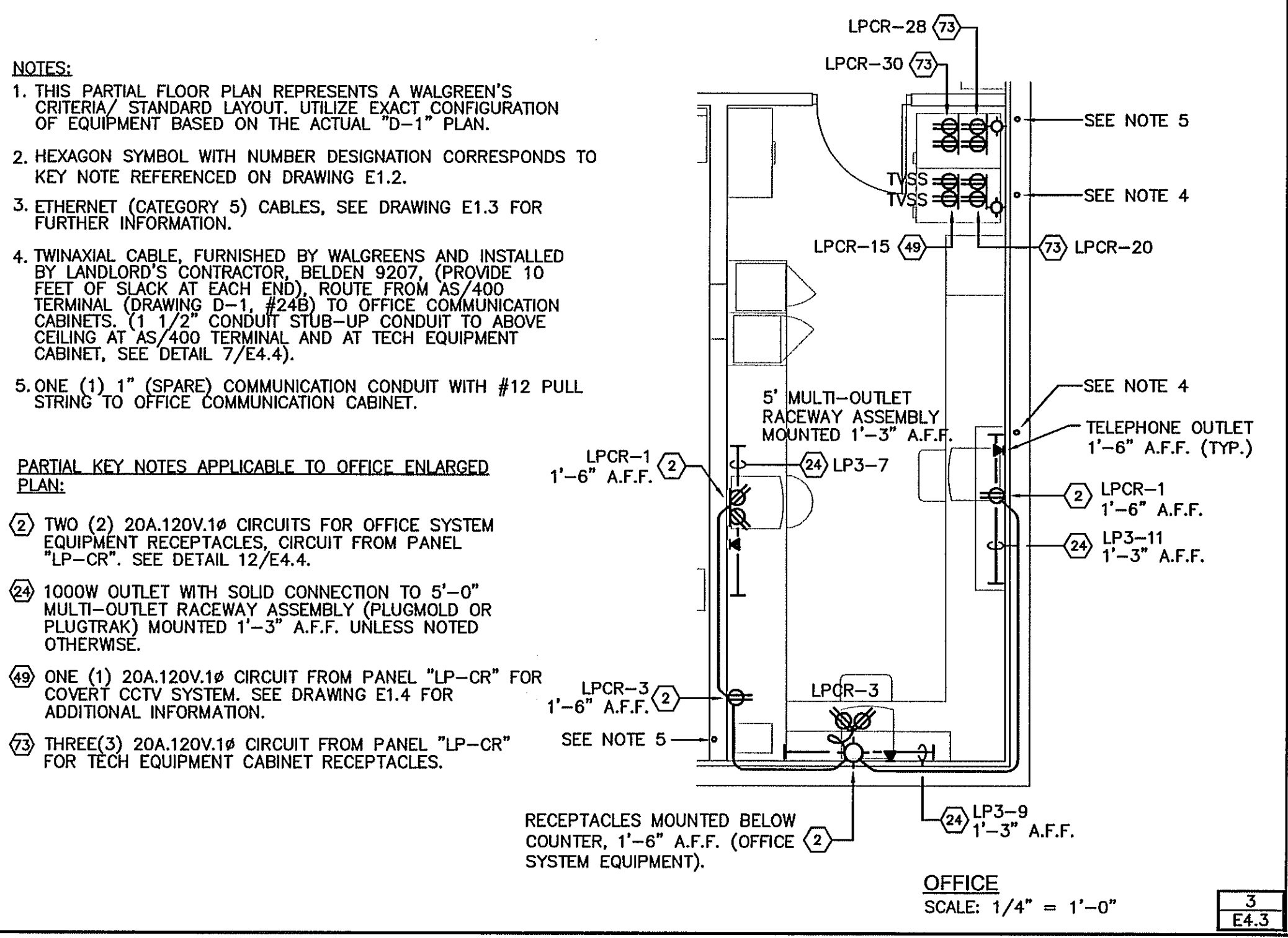
**DRAWING TITLE**  
 ELECTRICAL DETAILS

**DATE:** 11.30.09  
**DRAWN BY:** P.M.  
**REVIEWED BY:** S.C.

**WALGREENS STORE NO.:** 13450  
**SCALE:** AS SHOWN  
**RELEASED TO CONSTRUCTION:** -

**DRAWING NO.:** E4.3  
**FWH PROJECT NO.:** 0713

**OFFICE LAYOUT - POWER AND SYSTEMS DETAIL**



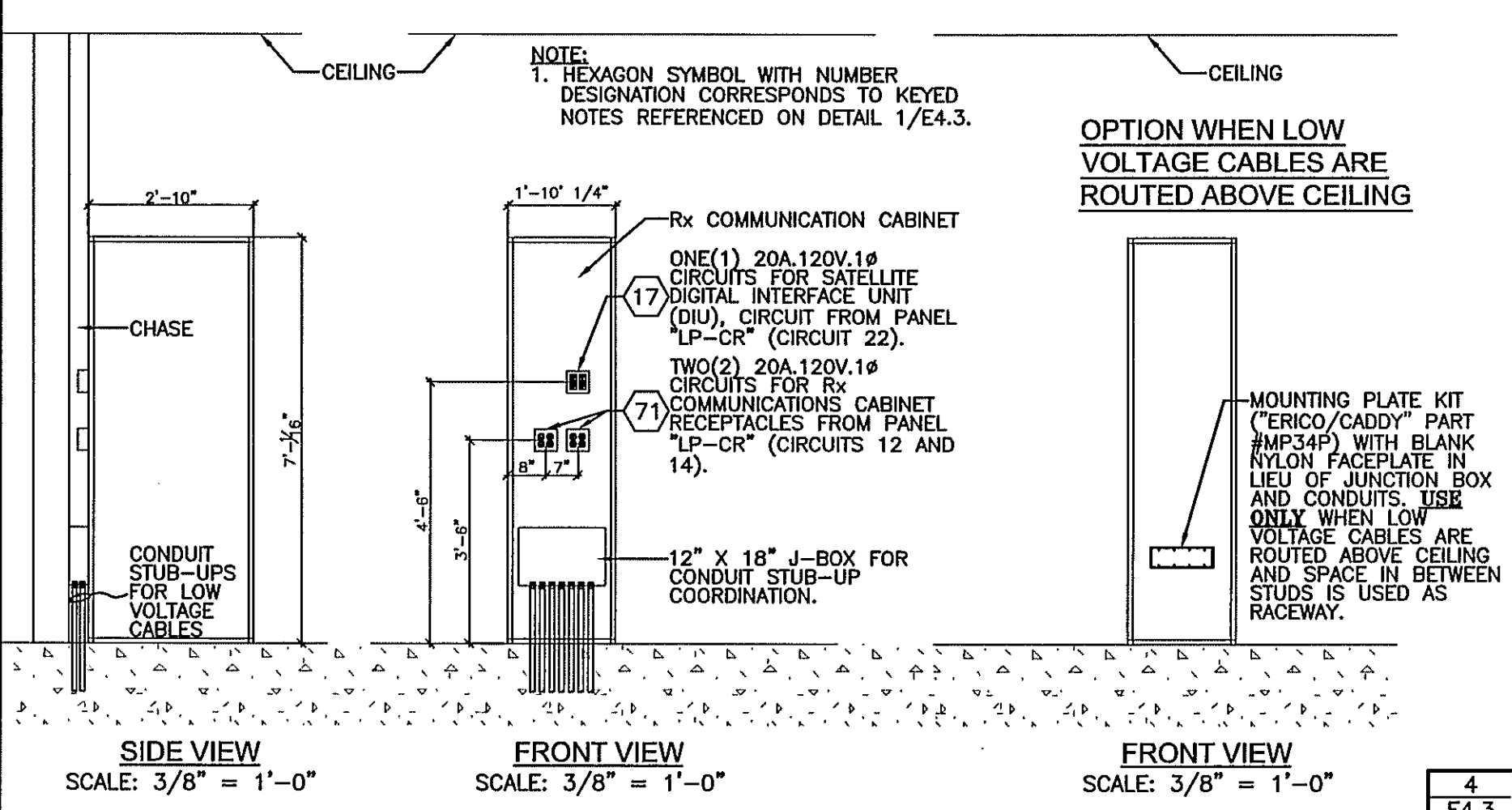
**NOTES:**  
 1. THIS PARTIAL FLOOR PLAN REPRESENTS A WALGREEN'S CRITERIA/STANDARD LAYOUT. UTILIZE EXACT CONFIGURATION OF EQUIPMENT BASED ON THE ACTUAL 'D-1' PLAN.  
 2. HEXAGON SYMBOL WITH NUMBER DESIGNATION CORRESPONDS TO KEY NOTE REFERENCED ON DRAWING E1.2.  
 3. ETHERNET (CATEGORY 5) CABLES, SEE DRAWING E1.3 FOR FURTHER INFORMATION.  
 4. TWINAXIAL CABLE, FURNISHED BY WALGREENS AND INSTALLED BY LANDLORD'S CONTRACTOR, BELDEN 9207, (PROVIDE 10 FEET OF SLACK AT EACH END), ROUTE FROM AS/400 TERMINAL (DRAWING D-1 E2-4B) TO OFFICE COMMUNICATION CABINETS. (1 1/2" CONDUIT STUB-UP CONDUIT TO ABOVE CEILING AT AS/400 TERMINAL AND AT TECH EQUIPMENT CABINET, SEE DETAIL 7/E4.4).  
 5. ONE (1) 1" (SPARE) COMMUNICATION CONDUIT WITH #12 PULL STRING TO OFFICE COMMUNICATION CABINET.

**PARTIAL KEY NOTES APPLICABLE TO OFFICE ENLARGED PLAN:**

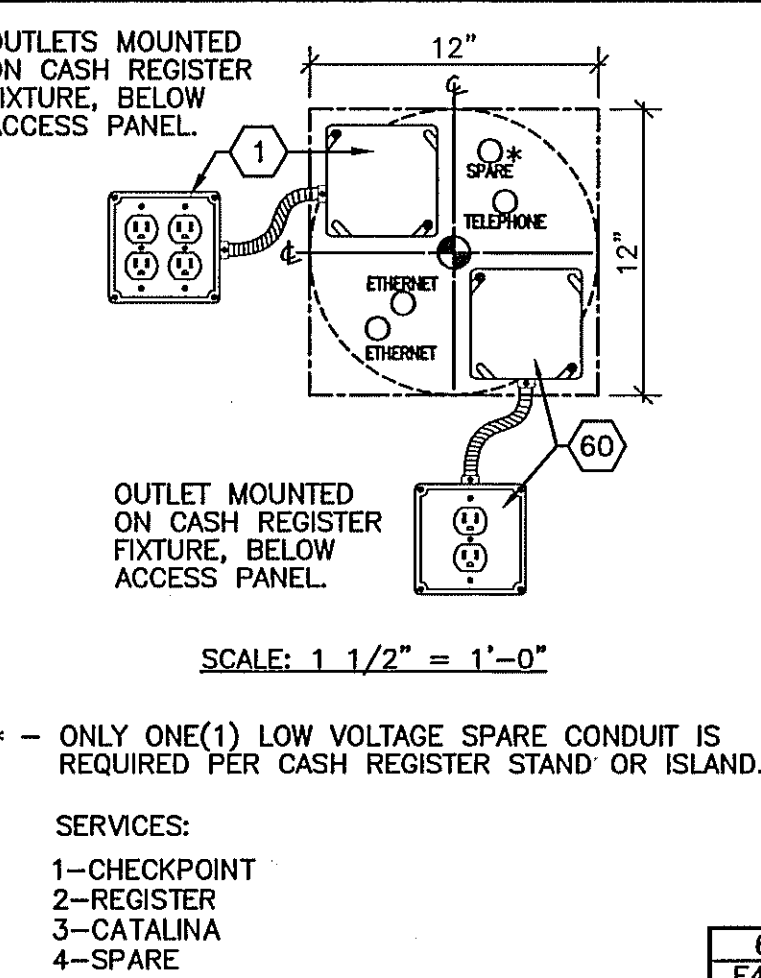
- ② TWO (2) 20A.120V.1Ø CIRCUITS FOR OFFICE SYSTEM EQUIPMENT RECEPTACLES. CIRCUIT FROM PANEL "LP-CR". SEE DETAIL 12/E4.4.
- ②④ 1000W OUTLET WITH SOLID CONNECTION TO 5'-0" MULTI-OUTLET RACEWAY ASSEMBLY (PLUGMOLD OR PLUGTRAK) MOUNTED 1'-3" A.F.F. UNLESS NOTED OTHERWISE.
- ④⑨ ONE (1) 20A.120V.1Ø CIRCUIT FROM PANEL "LP-CR" FOR COVERT CCTV SYSTEM. SEE DRAWING E1.4 FOR ADDITIONAL INFORMATION.
- ⑦③ THREE(3) 20A.120V.1Ø CIRCUIT FROM PANEL "LP-CR" FOR TECH EQUIPMENT CABINET RECEPTACLES.

RECEPTACLES MOUNTED BELOW COUNTER, 1'-6" A.F.F. (OFFICE SYSTEM EQUIPMENT).  
 OFFICE SCALE: 1/4" = 1'-0"

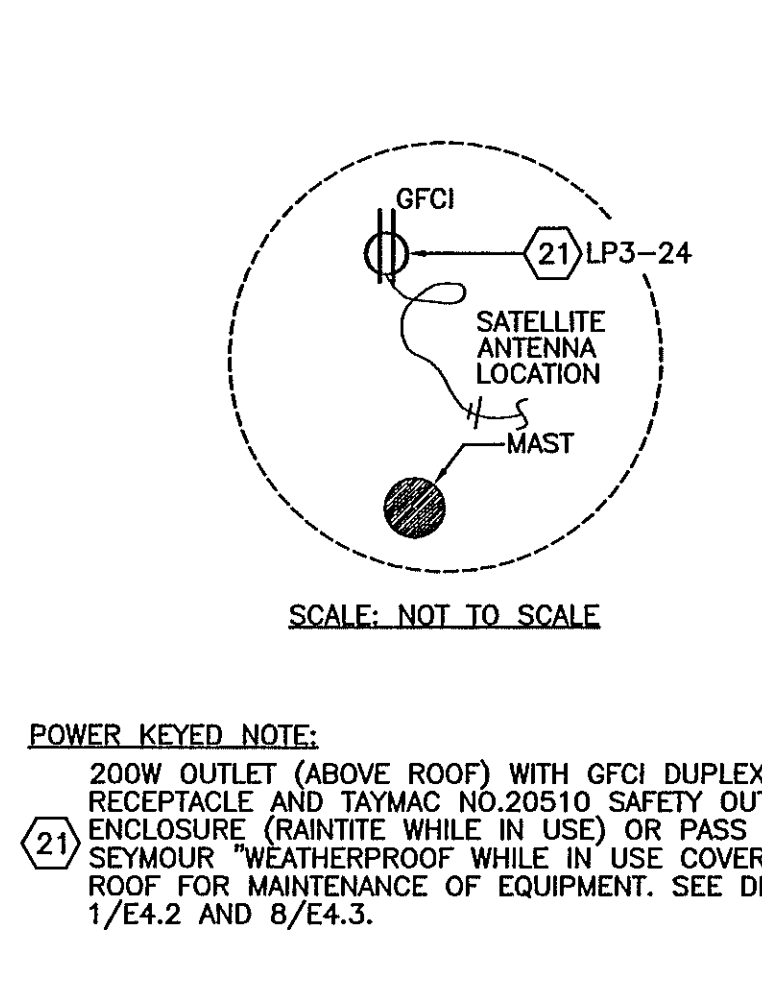
**RX COMMUNICATION CABINET - ELEVATION**



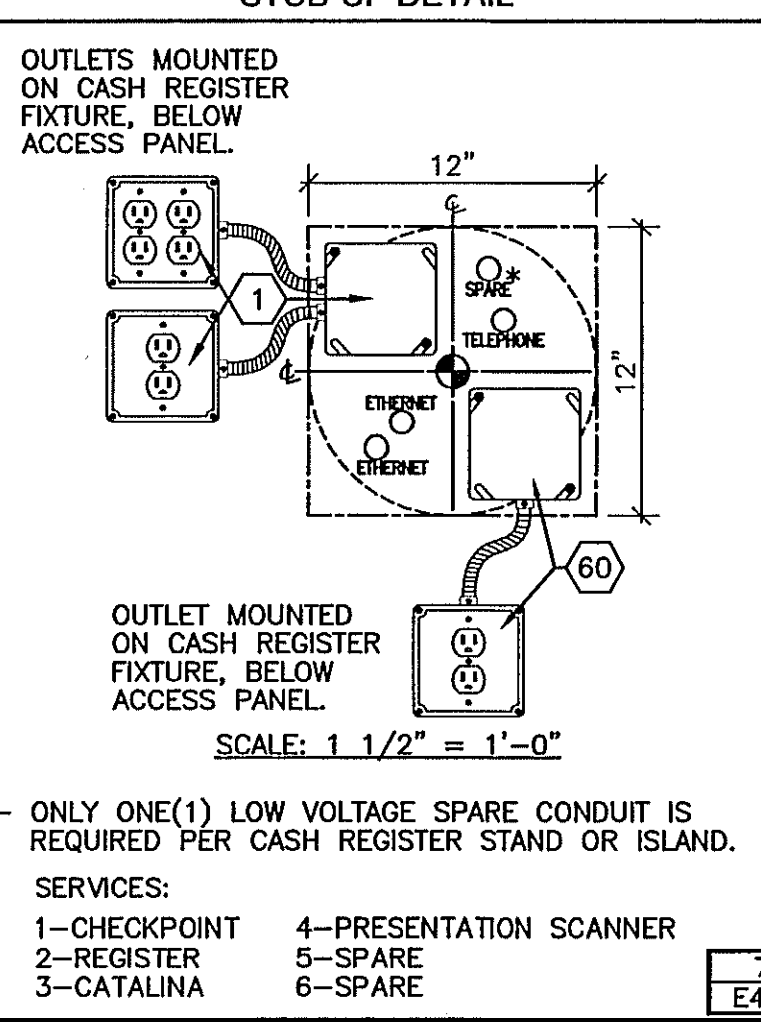
**COSMETICS, FRONT CASH REGISTER #3 & DRIVE THRU CIRCUIT STUB-UP DETAIL**



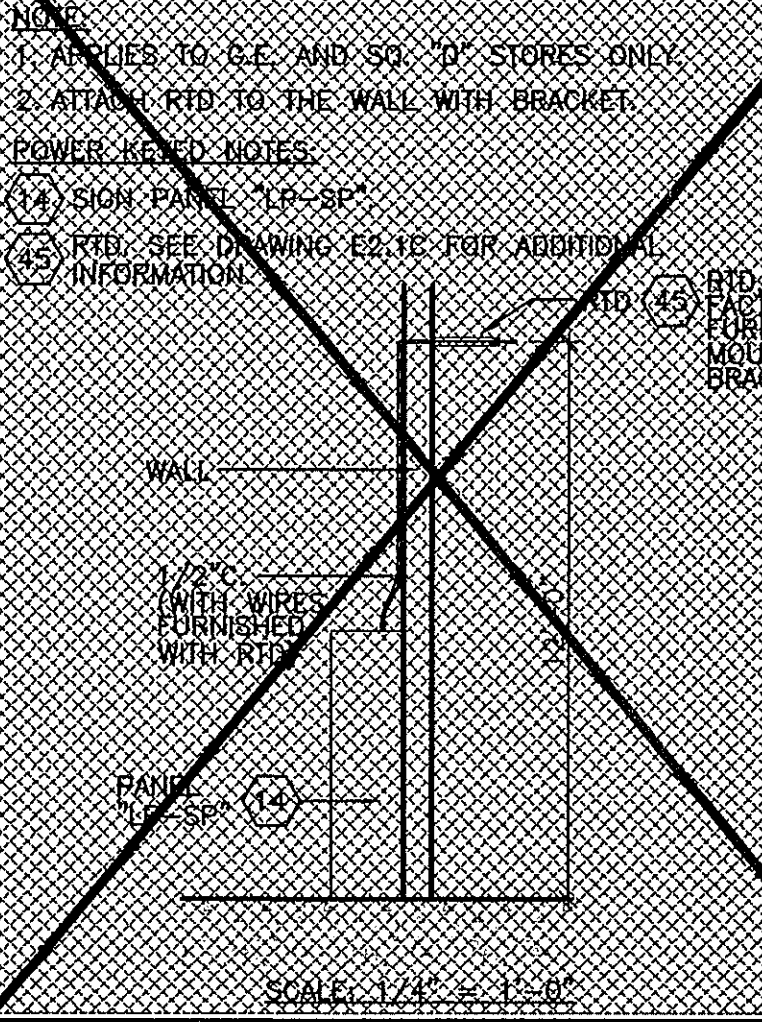
**ELECTRICAL - PARTIAL ROOF PLAN**



**FRONT CASH REGISTER #1 & 2 CIRCUIT STUB-UP DETAIL**



**RTD MOUNTING DETAIL**



**OFFICE COMMUNICATION CABINETS - ELEVATION (NOT TO SCALE)**

