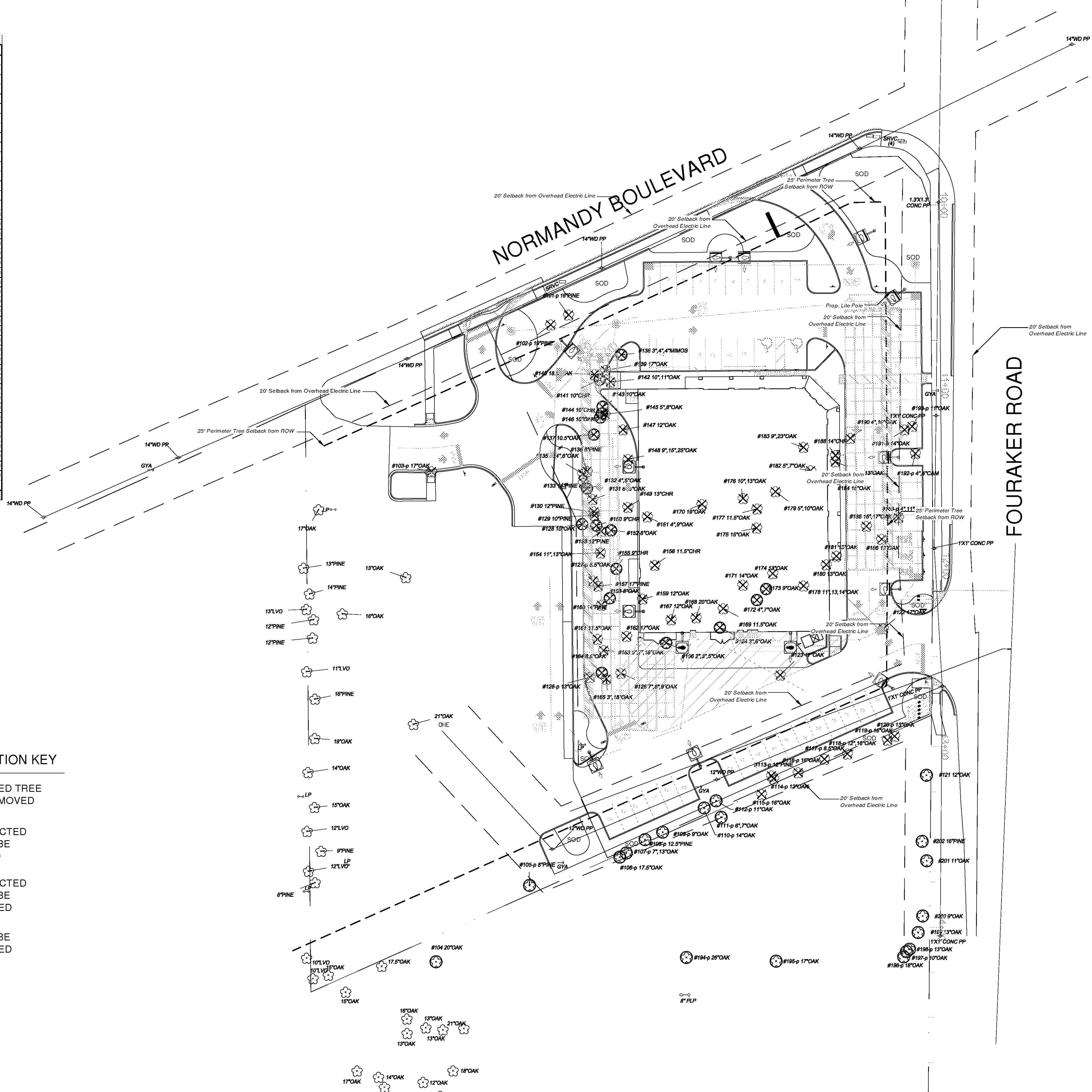


Trees to be Removed

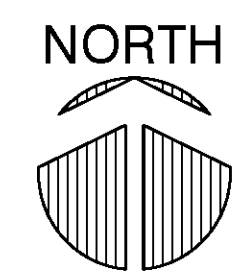
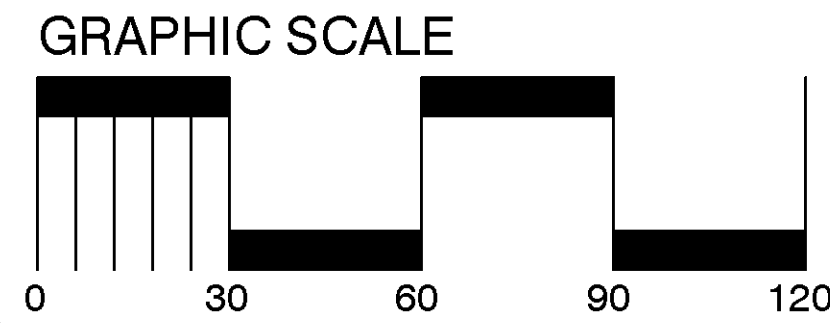
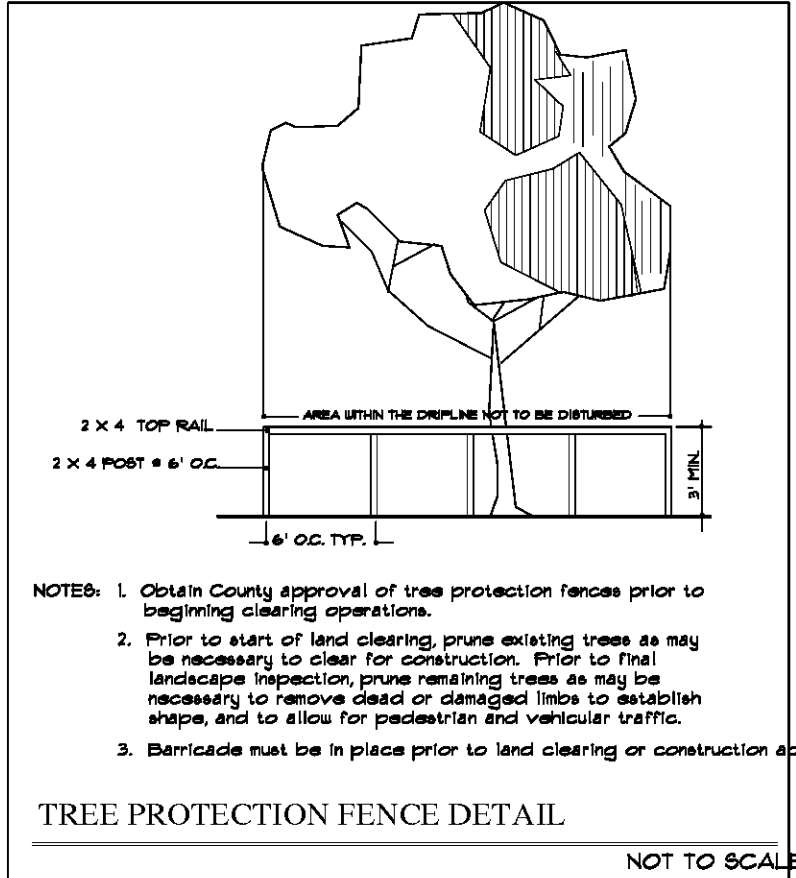
Interior Protected Trees			Exterior Protected Trees		
Ref #	Cal.	Type	Ref #	Cal.	Type
#156	11.5	CHR	#127-p	8.5	OAK
#177	11.5	OAK	#117-p	8.5	OAK
#189	11.5	OAK	#193-p	11	OAK
#181	11.5	OAK	#114-p	12	OAK
#182	12	OAK	#128-p	13	OAK
#157	12	OAK	#123-p	13	OAK
#131	12	OAK	#191-p	14	OAK
#147	12	OAK	#189-p	15	OAK
#159	12	OAK	#119-p	16	OAK
#149	13	CHR	#116-p	16	OAK
#186	13	OAK	#115-p	16	OAK
#181	13	OAK	#103-p	17	OAK
#180	13	OAK	#118-p	28	OAK
#187	13	OAK	#113-p	12	PINE
#174	13	OAK	#101-p	16	PINE
#151	13	OAK	#102-p	19	PINE
#135	13	OAK		0	0
#145	13	OAK		0	0
#188	14	CHR		0	0
#179	15	OAK		0	0
#175	15	OAK		0	0
#162	17	OAK		0	0
#138	17	OAK		0	0
#122	17	OAK		0	0
#123	17	OAK		0	0
#140	18.5	OAK		0	0
#170	19	OAK		0	0
#168	20	OAK		0	0
#142	21	OAK		0	0
#165	21	OAK		0	0
#176	23	OAK		0	0
#154	24	OAK		0	0
#125	24	OAK		0	0
#163	28	OAK		0	0
#183	32	OAK		0	0
#185	32	OAK		0	0
#178	38	OAK		0	0
#148	48	OAK		0	0
#136	8	PINE		0	0
#129	10	PINE		0	0
#130	12	PINE		0	0
#153	12	PINE		0	0
#133	14	PINE		0	0
#160	14	PINE		0	0
#157	17	PINE		0	0

NOTE: Reference Number follow by (p) indicates perimeter trees.



TREE MITIGATION KEY

- PROTECTED TREE TO BE REMOVED
- UNPROTECTED TREE TO BE REMOVED
- UNPROTECTED TREE TO BE PRESERVED
- TREE TO BE PRESERVED



TREE PRESERVATION / MITIGATION PLAN

SCALE : 1" = 30' - 0"

REVISIONS	
NO.	DESCRIPTION
1.	01-28-2009 As/COJ Dev. Review Comments JCC
2.	05-21-2009 As/COJ Dev. Review Comments JCC
3.	08-11-2009 No Existing Pond Improvements JCC
4.	11-23-2009 As per Owner's Arch's Markup JCC
5.	12-04-2009 Indicate Proposed Lite Poles JCC
6.	02-03-2010 Final Revisions as per Owner JCC

THIS DRAWING IS AN INSTRUMENT OF SERVICE AND THE PROPERTY OF SUNSHINE DESIGN, AND SHALL REMAIN THEIR PROPERTY. THE USE OF THIS DRAWING IS RESTRICTED TO THE ORIGINAL SITE FOR WHICH IT IS PREPARED AND PUBLICATION THEREOF IS EXPRESSLY LIMITED TO SUCH USE.

**Walgreen's**  
 Normandy Blvd. and Fouraker Road  
 A Development by:  
**Rock Ventures, LLC**

TREE PRESERVATION / MITIGATION PLAN

**SUNSHINE DESIGN**  
 Chris Commins ASLA  
 PMB 366 | 1445-26 State Road 13 | Fruit Cove, Florida 32259  
 PH: 904-233-4809 Email: chris@chriscommins.com

DATE: 12-05-2008  
 DRAWN BY: JCC / SP  
 SHEET NO.: **TM-1**