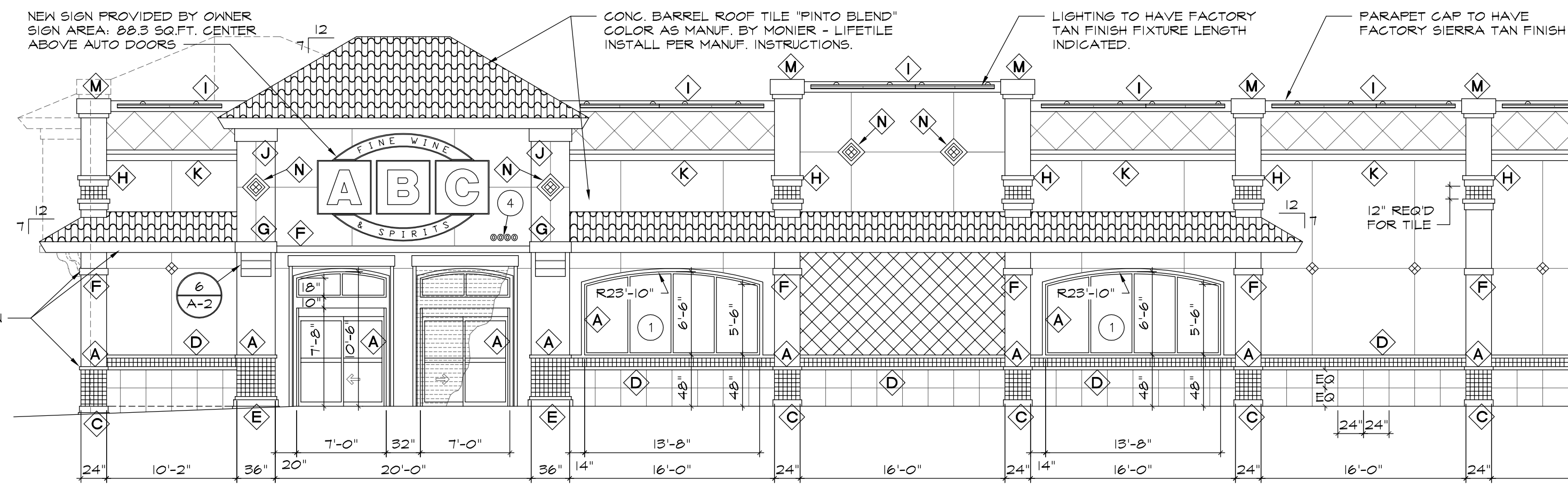


- ELEV. 28'-10" TOP OF FRAMING
- ELEV. 25'-4" TOP OF ICF WALL
- ELEV. 23'-10" TOP OF ICF WALL
- ELEV. 20'-0" TOP OF BAND 'K'
- ELEV. 17'-1" CENTER OF SIGN
- ELEV. 15'-4" BOTTOM OF BAND 'H'
- ELEV. 12'-0" BOTTOM OF SOFFIT
- ELEV. 10'-6" TOP OF WINDOW
- ALL BANDING TO BE PAINTED 'ABC TAN' AS MANUF. BY GLIDDEN
- ELEV. 4'-0" TOP OF BANDING 'D'
- ELEV. 0'-0" FINISHED FLOOR

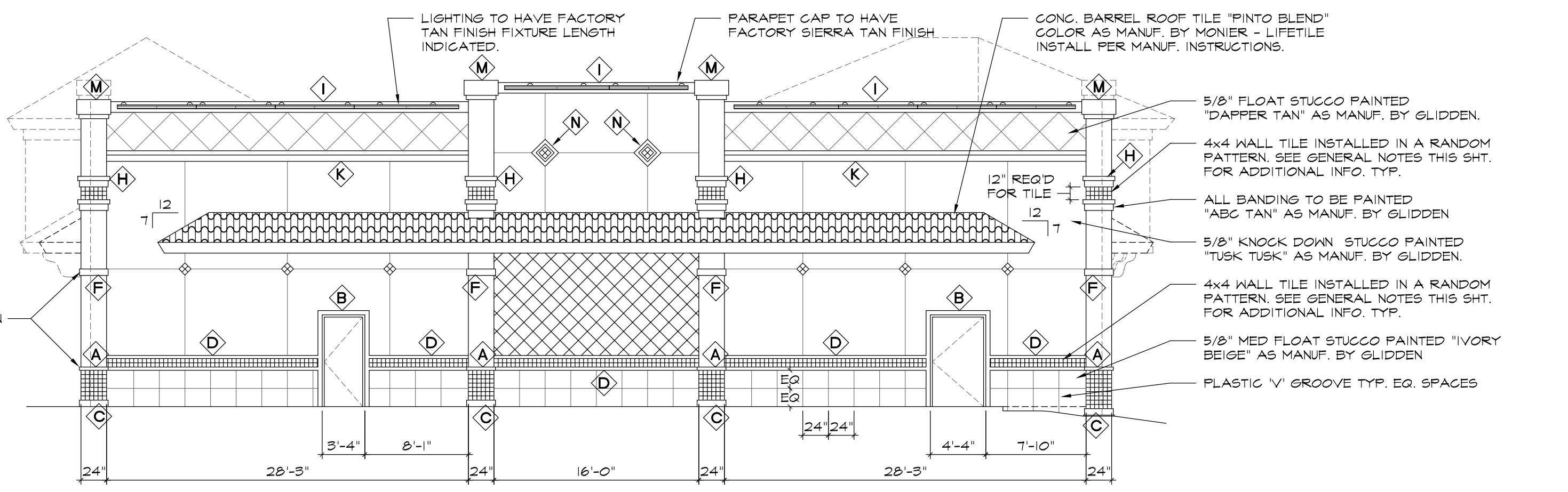


- 5/8" FLOAT STUCCO PAINTED 'DAPPER TAN' AS MANUF. BY GLIDDEN.
- 4x4 WALL TILE INSTALLED IN A RANDOM PATTERN. SEE GENERAL NOTES THIS SHT. FOR ADDITIONAL INFO. TYP.
- ALL BANDING TO BE PAINTED 'ABC TAN' AS MANUF. BY GLIDDEN
- 5/8" KNOCK DOWN STUCCO PAINTED 'TUSK TUSK' AS MANUF. BY GLIDDEN.
- 4x4 WALL TILE INSTALLED IN A RANDOM PATTERN. SEE GENERAL NOTES THIS SHT. FOR ADDITIONAL INFO. TYP.
- 5/8" MED FLOAT STUCCO PAINTED 'IVORY BEIGE' AS MANUF. BY GLIDDEN
- PLASTIC 'V' GROOVE TYP. EQ. SPACES

NOTE:
SIGNAGE TO BE SUBMITTED UNDER SEPARATE PERMIT.

1 EAST ELEVATION
SCALE: 1/8" = 1'-0"

- ELEV. 25'-4" TOP OF ICF WALL
- ELEV. 23'-10" TOP OF ICF WALL
- ELEV. 20'-0" TOP OF BAND 'K'
- ELEV. 15'-4" BOTTOM OF BAND 'H'
- ELEV. 12'-0" BOTTOM OF SOFFIT
- ALL BANDING TO BE PAINTED 'ABC TAN' AS MANUF. BY GLIDDEN
- ELEV. 4'-0" TOP OF BANDING 'D'
- ELEV. 0'-0" FINISHED FLOOR



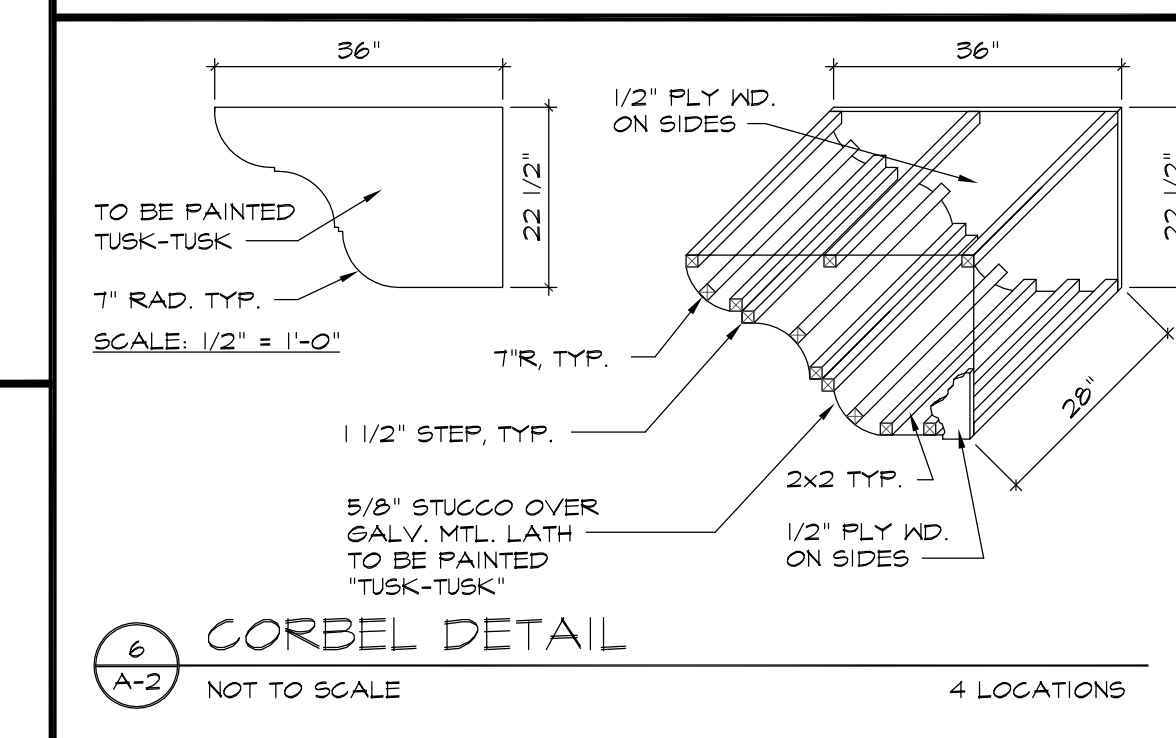
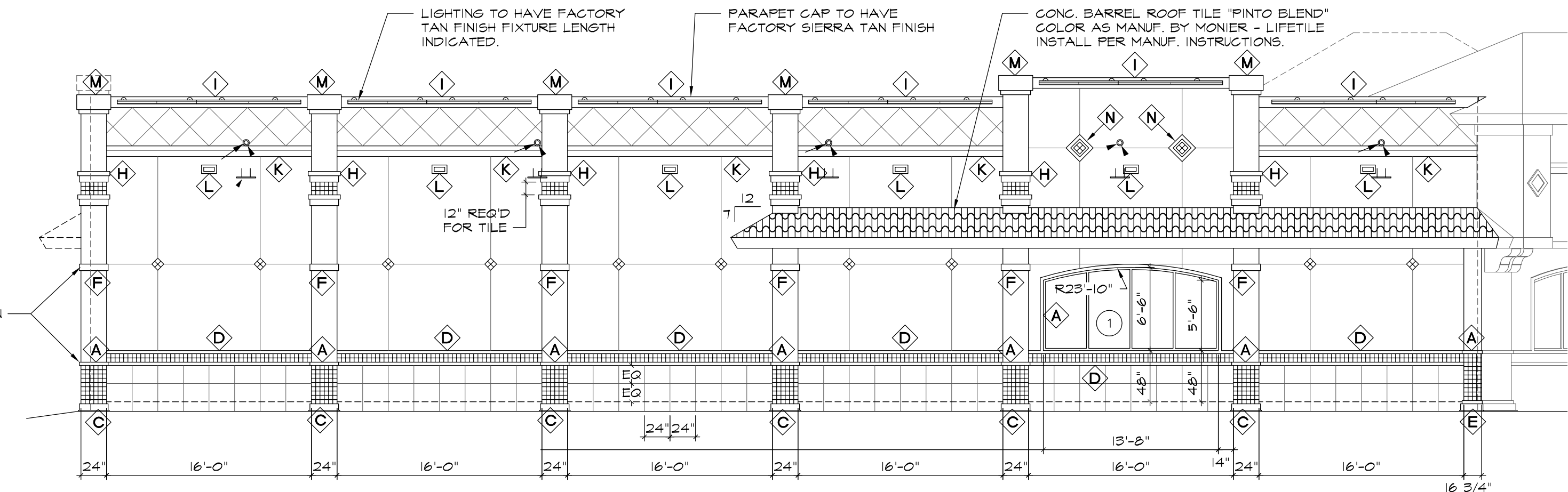
- 5/8" FLOAT STUCCO PAINTED 'DAPPER TAN' AS MANUF. BY GLIDDEN.
- 4x4 WALL TILE INSTALLED IN A RANDOM PATTERN. SEE GENERAL NOTES THIS SHT. FOR ADDITIONAL INFO. TYP.
- ALL BANDING TO BE PAINTED 'ABC TAN' AS MANUF. BY GLIDDEN
- 5/8" KNOCK DOWN STUCCO PAINTED 'TUSK TUSK' AS MANUF. BY GLIDDEN.
- 4x4 WALL TILE INSTALLED IN A RANDOM PATTERN. SEE GENERAL NOTES THIS SHT. FOR ADDITIONAL INFO. TYP.
- 5/8" MED FLOAT STUCCO PAINTED 'IVORY BEIGE' AS MANUF. BY GLIDDEN
- PLASTIC 'V' GROOVE TYP. EQ. SPACES

KEY NOTES:

- ARCH ALUMINUM & GLASS COMPANY SERIES 4500 ALUMINUM FLUSH GLAZED STOREFRONT SYSTEM W/ 1/4" LAMINATED SAFETY GLASS. ALL STORE FRONT WINDOWS SHALL BE PROVIDED W/ REMOVABLE 0.90" ALUMINUM STORM PANEL AS MANUFACTURED BY ALL BROWARD HURRICANE PANEL INC. OR EQUAL. SEE DETAIL T THIS SHEET.
- NAECO GT-175 SINGLE SLIDE 'IMPACT RESISTANT' AUTO DOOR WITH EMERGENCY BREAKOUT. STOREFRONT DOORS SHALL BE PROVIDED W/ EXTRUDED ALUM. ROLL-UP SECURITY SHUTTER #0'X15'8" 10" HOUSING SIZE. BRONZE ANODIZED IN COLOR MODEL NO. '58MM-BERTHA' AS MANUF. BY AMERICAN SHUTTER SYSTEMS
- CECO METAL DOOR - TO BE PAINTED 'IVORY BEIGE' REFER TO DOOR / HARDWARE SCHEDULE ON SHEET A-1 FOR ADD. INFO.
- 6" BLK. PLASTIC LETTERS MOUNTED TO BUILDING

2 NORTH ELEVATION
SCALE: 1/8" = 1'-0"

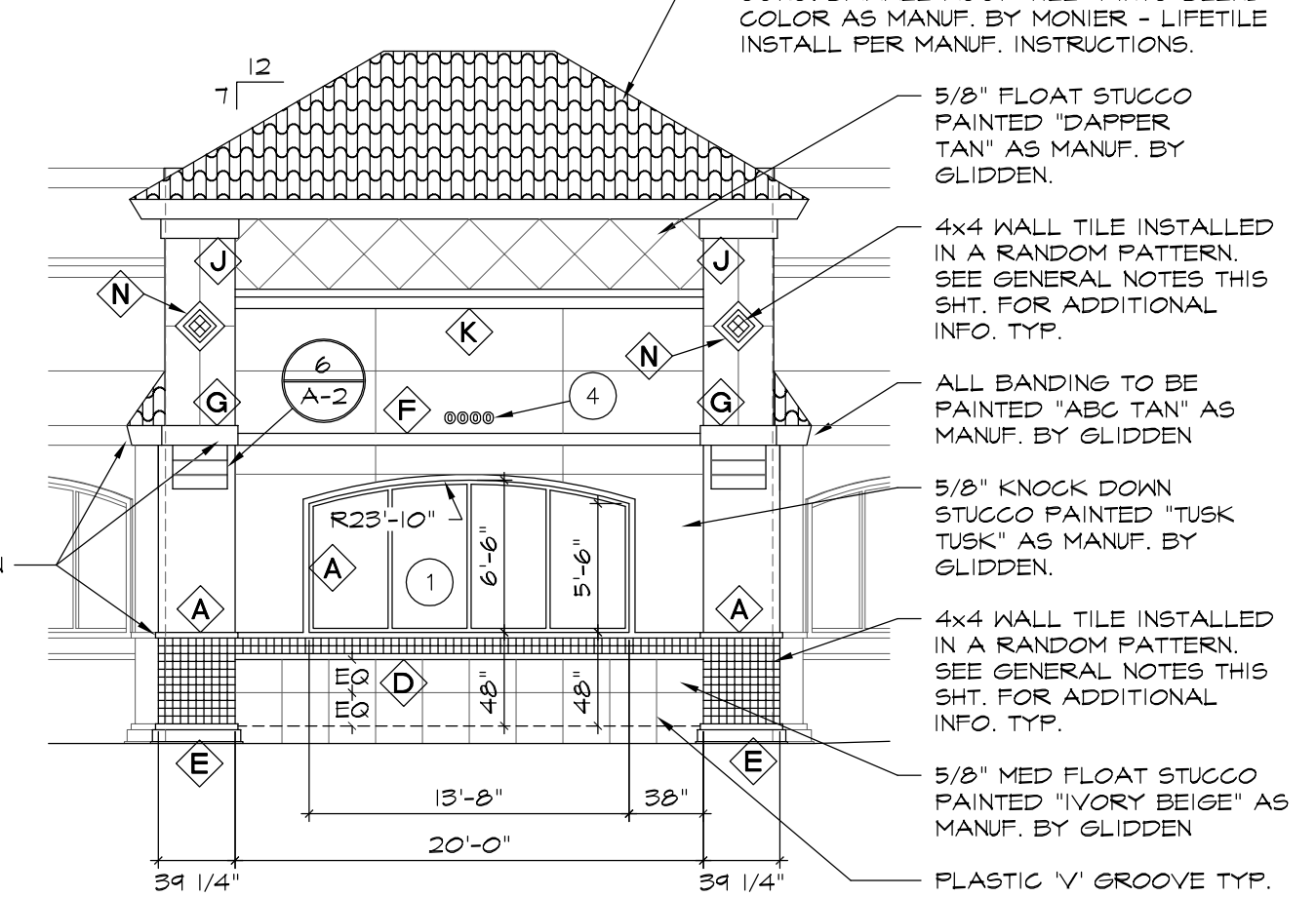
- ELEV. 25'-4" TOP OF ICF WALL
- ELEV. 23'-10" TOP OF ICF WALL
- ELEV. 20'-0" TOP OF BAND 'K'
- ELEV. 17'-1" CENTER OF SCUPPER 'L'
- ELEV. 15'-4" BOTTOM OF BAND 'H'
- ELEV. 12'-0" BOTTOM OF SOFFIT
- ELEV. 10'-6" TOP OF WINDOW
- ALL BANDING TO BE PAINTED 'ABC TAN' AS MANUF. BY GLIDDEN
- ELEV. 4'-0" TOP OF BANDING 'D'
- ELEV. 0'-0" FINISHED FLOOR



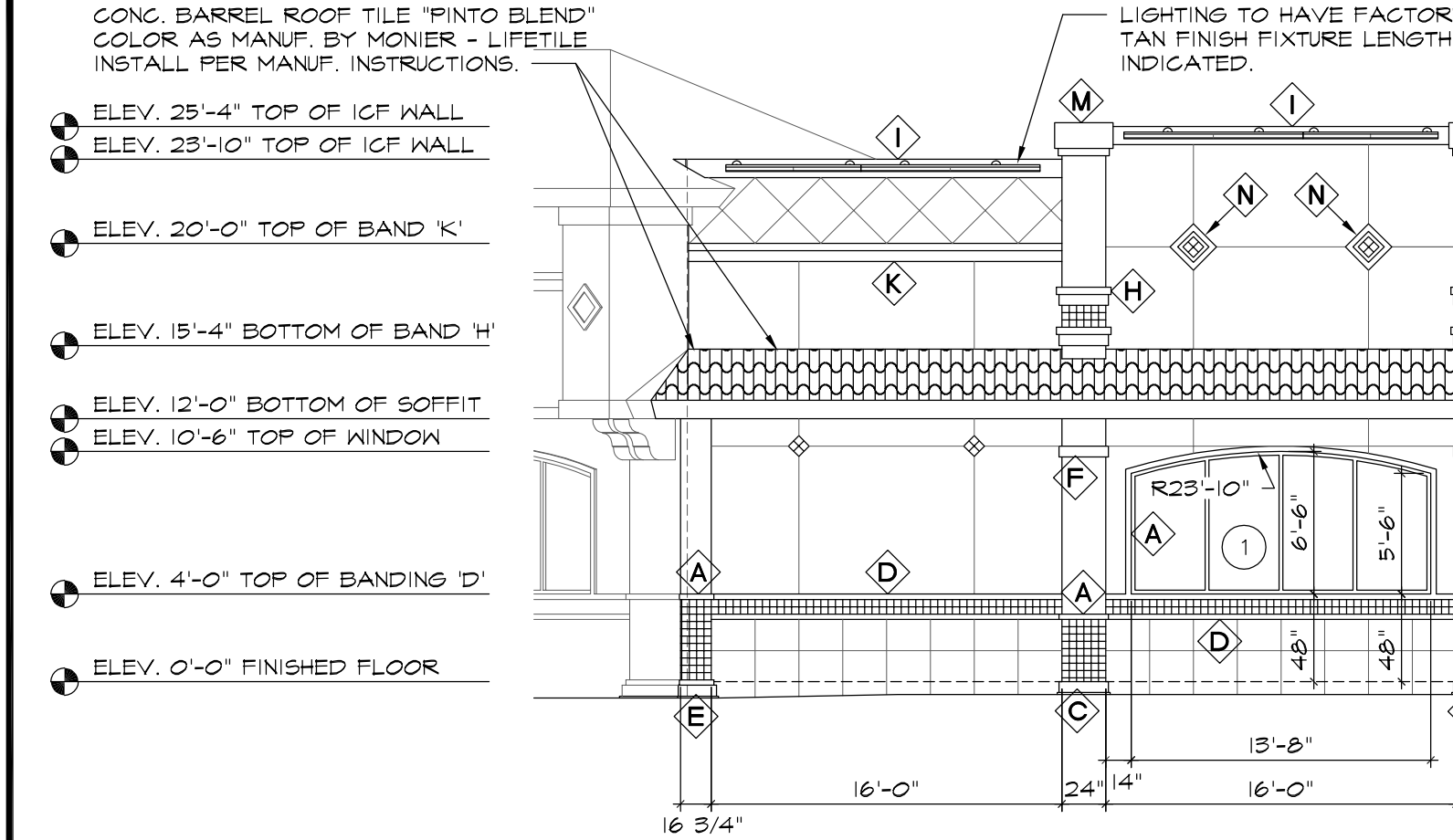
6 CORBEL DETAIL
NOT TO SCALE

3 WEST ELEVATION
SCALE: 1/8" = 1'-0"

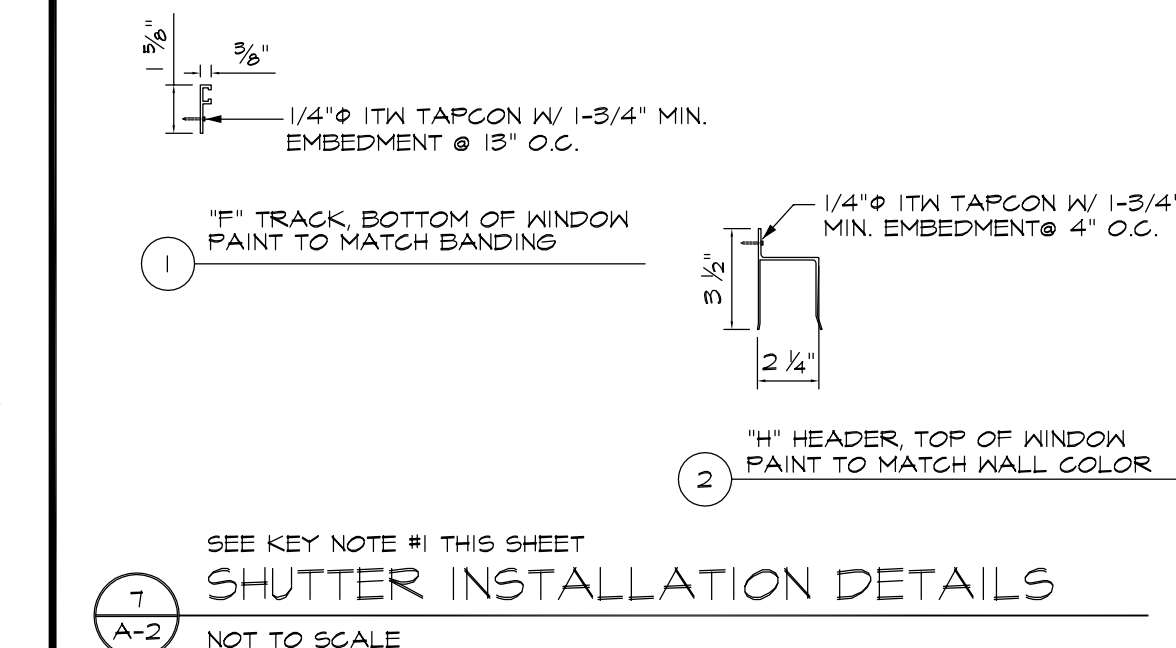
- ELEV. 28'-10" TOP OF FRAMING
- ELEV. 25'-4" TOP OF ICF WALL
- ELEV. 23'-10" TOP OF ICF WALL
- ELEV. 20'-0" TOP OF BAND 'K'
- ELEV. 17'-1" CENTER OF SCUPPER 'L'
- ELEV. 15'-4" BOTTOM OF BAND 'H'
- ELEV. 12'-0" BOTTOM OF SOFFIT
- ELEV. 10'-6" TOP OF WINDOW
- ALL BANDING TO BE PAINTED 'ABC TAN' AS MANUF. BY GLIDDEN
- ELEV. 4'-0" TOP OF BANDING 'D'
- ELEV. 0'-0" FINISHED FLOOR



4 SOUTH WEST ELEVATION
SCALE: 1/8" = 1'-0"



5 SOUTH ELEVATION
SCALE: 1/8" = 1'-0"



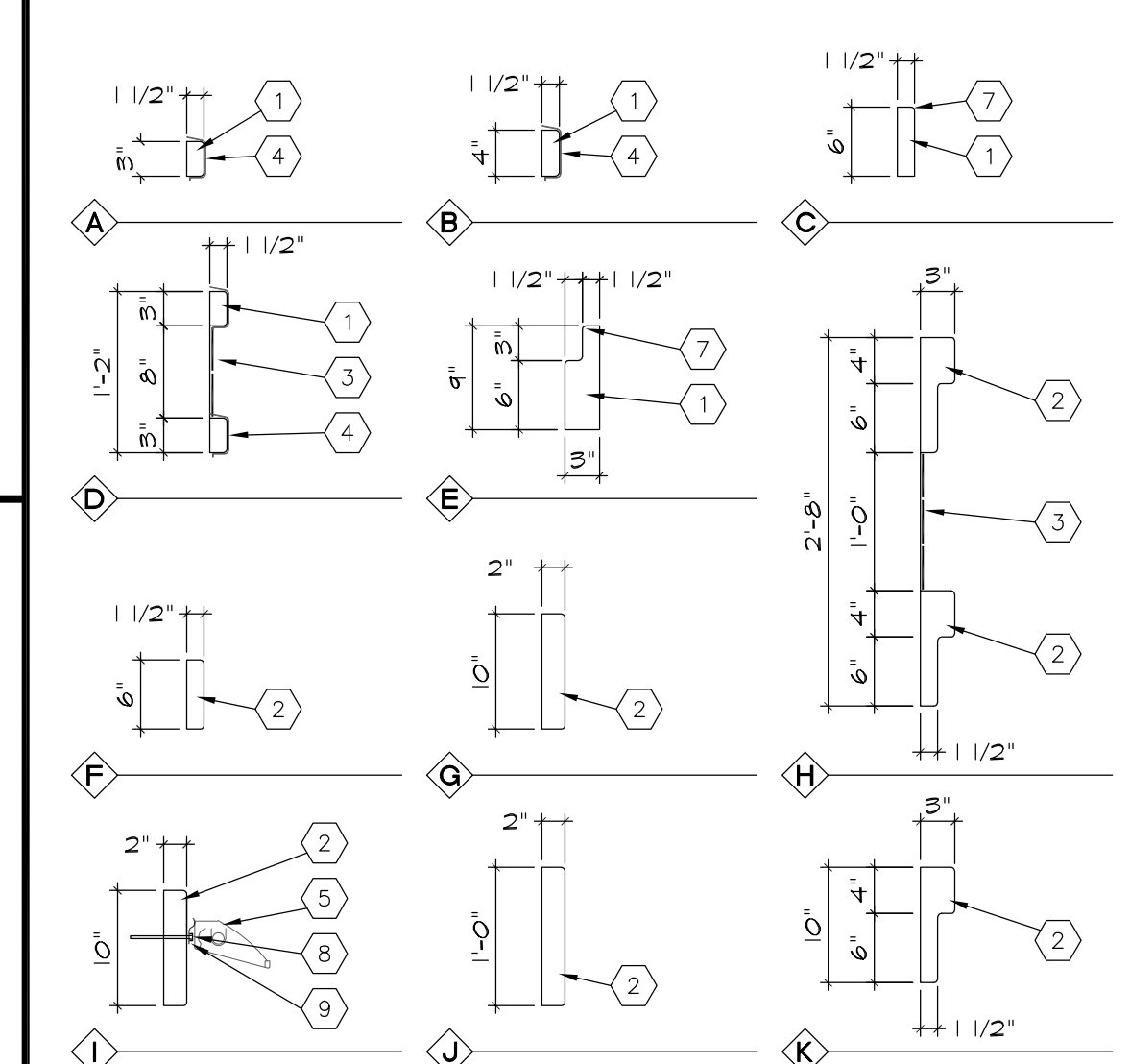
7 SHUTTER INSTALLATION DETAILS
NOT TO SCALE

GENERAL NOTES:

- CONTRACTOR SHALL FIELD VERIFY ALL DIMENSIONS PRIOR TO CONSTRUCTION.
- THE METHOD OF ATTACHMENT WILL NOT AFFECT THE STRUCTURAL INTEGRITY OF THE FLOOR OR CEILING ASSEMBLY TO WHICH IT IS ATTACHED.
- ALL BANDS AROUND DOORS, WINDOWS, ETC. SHALL HAVE A FLOAT FINISH AND ALL BANDS TO BE CAULKED CONT.
- ALL EXTERIOR SURFACES SHALL BE PRIMED PRIOR TO FINAL PAINT APPLICATION.
- ALL EXTERIOR PAINT SHALL INCLUDE A 'MILDEW INHIBITOR'.
- CORNER LATH SHALL BE USED WHERE APPLICABLE, IE. COLUMNS, BUILDING CORNERS, ETC.
- 1/4" PLASTIC EXPANSION SHALL BE USED TO ACHIEVE 'V-GROOVE' PANEL EFFECT. PROVIDE STUCCO CONTROL JOINTS PER 100 SQ. FT.
- EXTERIOR 4x4 WALL TILE, ANTIQUA 'CORALLO' AND ANTIQUA 'NOCE', AS MANUF. BY C.I.R., INSTALL IN A RANDOM PATTERN.
- CONC. BARREL ROOF TILE 'PINTO BLEND' #0051 AS MANUF. BY MONIER - LIFE TILE. INSTALL PER MANUF. INSTRUCTIONS.
- ALL PRIMARY EXTERIOR WALLS TO HAVE A SYNTHETIC STUCCO FINISH 'TUSK TUSK' IN COLOR. CONTACT ICI DULUX PAINTS, PH. (407) 855-1512
- LOWER PORTION OF THE EXT. WALL TO HAVE A SYNTHETIC STUCCO FINISH 'IVORY BEIGE' IN COLOR. CONTACT ICI DULUX PAINTS, PH. (407) 855-1512
- ALL BANDING TO BE 'ABC TAN'. CONTACT ICI DULUX PAINTS, PH. (407) 855-1512
- UPPER PORTION OF EXTERIOR WALL TO HAVE A SYNTHETIC STUCCO FINISH 'DAPPER TAN' IN COLOR W/ DIAMOND V-GROOVE PATTERN. CONTACT ICI DULUX PAINTS, PH. (407) 855-1512
- UNDERSIDE OF SOFFIT TO HAVE A SYNTHETIC STUCCO FINISH 'TUSK TUSK' IN COLOR. CONTACT ICI DULUX PAINTS, PH. (407) 855-1512
- ALL EXTERIOR METAL DOORS AND TRIM TO BE PAINTED 'IVORY BEIGE' OIL BASE. CONTACT ICI DULUX PAINTS, PH. (407) 855-1512
- ALL STOREFRONT WINDOW & SLIDING DOOR FRAMES TO HAVE A BRONZE ANODIZED ALUMINUM FINISH.
- SCUPPER HEIGHT TO BE FIELD VERIFIED. REFER TO STRUCTURAL ELEVATIONS FOR ADDITIONAL INFORMATION.
- EXTERIOR WINDOWS AND GLASS DOORS SHALL BEAR THE AAMA, NDMA, OR OTHER APPROVED LABEL INDICATING COMPLIANCE WITH ANSI/AAMA/NWDA 1011.5, 2-97 AND PROVIDE DESIGN PRESSURES AS CALCULATED BY THE ARCHITECT OR ENGINEER OF THIS STRUCTURE. PROVIDE INSPECTOR WITH MANUFACTURER'S SHOP DRAWINGS FOR WINDOW INSTALLATION.
- PAINT MIXTURE SCHEDULE:

SEMI-GLOSS LATEX IVORY BEIGE 2406-0100		SEMI-GLOSS LATEX TUSK TUSK 2402-0100	
(1) GALLON		(1) GALLON	(5) GALLON
BLK	5	BLK	5
YOX	45	YOX	45
OXR	20	FFR	20

SEMI-GLOSS LATEX ABC TAN 2406-0300		OIL ABC TAN 4308-0300	
(1) GALLON	(5) GALLON	(1) GALLON	(5) GALLON
BLK	4P4	IP12	6P60
YOX	5P20	IP16	YOX
OXR	2P12	4O	OXR
WHT	TP52	2	GRN
		4	IO
		IP48	WHT
			8P48



DETAIL NOTES:

- SOLID STUCCO BAND
- FOAM BAND W/ W/M & SYNTHETIC FINISH - COLOR TO BE 'ABC TAN'
- 4x4 WALL TILE
- 1/4" STUCCO STOP TO FORM BAND
- LIGHT FIXTURE
- 4" x 10" SCUPPER SEE ROOF PLAN FOR ADD. INFO.
- 'J' CLIP
- 1/4" x 6" HEX HEAD TAPCON, TYP. OF 2
- 'HURRICANE CLIP' MIN. 3 PER LIGHT FIXTURE 6" MAX. FROM EA. END, TYP.

IMPORTANT NOTES:

- ALL CUSTOM SHAPES T-0" A.F.F. AND ABOVE TO BE FOAM (E.P.S.). ALL OTHERS TO BE SOLID STUCCO AS INDICATED. SEE DETAILS.
- THESE ARE CRITICAL DIMENSIONS AND SHALL NOT VARY
- BANDING TO BE APPLIED AFTER WALL IS STUCCOED.
- ALL BANDS AROUND DOORS, WINDOWS, ETC. SHALL HAVE A FLOAT FINISH.

8 STUCCO SHAPES
SCALE: 1" = 1'-0"

REVISIONS BY

ARTERBURY ARCHITECTS, INC.
AA 26000718
1009 MAITLAND CENTER COMMONS BLVD
SUITE 216 MAITLAND, FL 32751
TEL: (407) 774-2233
FAX: (407) 774-7377

ABC LIQUORS, INC.
8989 S. ORANGE AVE. - ORLANDO, FLA. 32809
ABC STORE NO. 197
PALM COAST, FL

ARCHITECTURAL ELEVATIONS

DRAWN:	M. MAISCO
CHECKED:	S. RIVERA
DATE:	5-15-04
SCALE:	AS NOTED
JOB No:	197
SHEET	

A-2