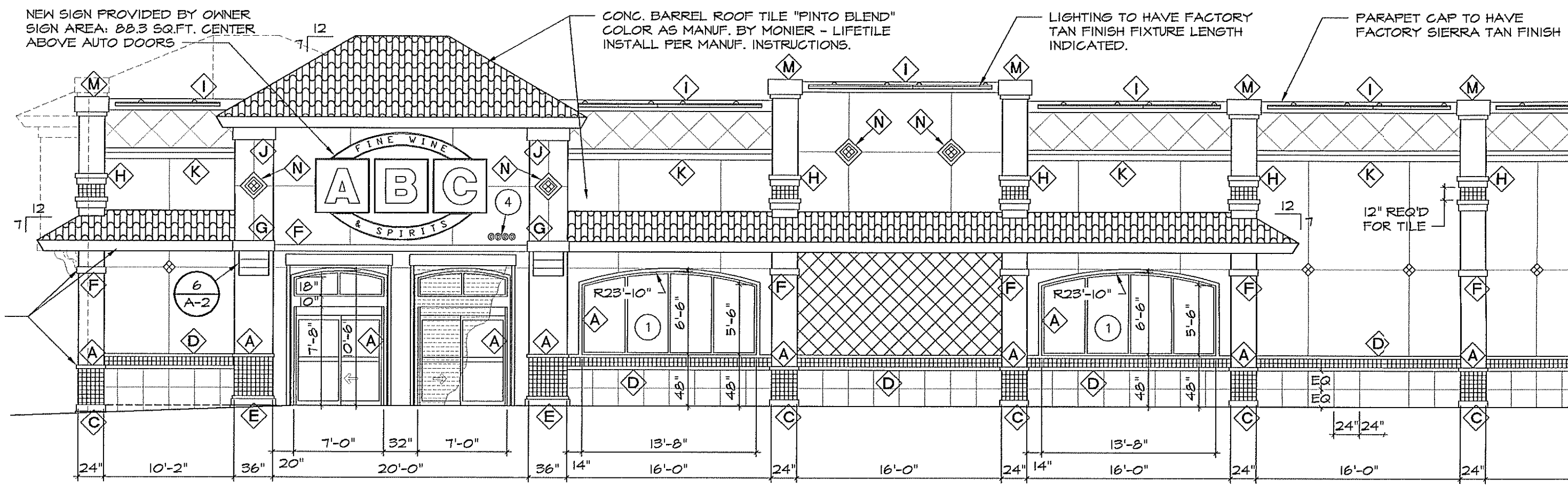


- ELEV. 28'-10" TOP OF FRAMING
- ELEV. 25'-4" TOP OF ICF WALL
- ELEV. 23'-10" TOP OF ICF WALL
- ELEV. 20'-0" TOP OF BAND 'K'
- ELEV. 17'-1" CENTER OF SIGN
- ELEV. 15'-4" BOTTOM OF BAND 'H'
- ELEV. 12'-0" BOTTOM OF SOFFIT
- ELEV. 10'-6" TOP OF WINDOW
- ELEV. 4'-0" TOP OF BANDING 'D'
- ELEV. 0'-0" FINISHED FLOOR

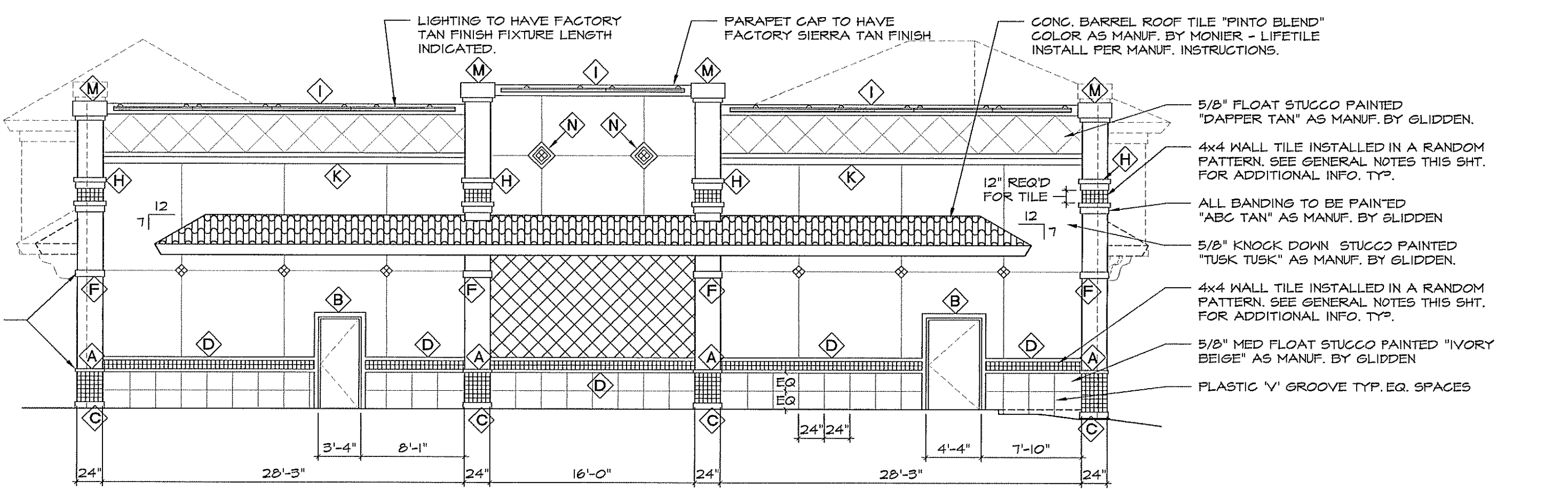


- 5/8" FLOAT STUCCO PAINTED "DAPPER TAN" AS MANUF. BY GLIDDEN.
- 4x4 WALL TILE INSTALLED IN A RANDOM PATTERN. SEE GENERAL NOTES THIS SH. FOR ADDITIONAL INFO. TYP.
- ALL BANDING TO BE PAINTED "ABC TAN" AS MANUF. BY GLIDDEN.
- 5/8" KNOCK DOWN STUCCO PAINTED "TUSK TUSK" AS MANUF. BY GLIDDEN.
- 4x4 WALL TILE INSTALLED IN A RANDOM PATTERN. SEE GENERAL NOTES THIS SH. FOR ADDITIONAL INFO. TYP.
- 5/8" MED FLOAT STUCCO PAINTED "IVORY BEIGE" AS MANUF. BY GLIDDEN.
- PLASTIC 'V' GROOVE TYP. EQ. SPACES

NOTE:  
SIGNAGE TO BE SUBMITTED UNDER SEPARATE PERMIT.

1 EAST ELEVATION  
SCALE: 1/8" = 1'-0"

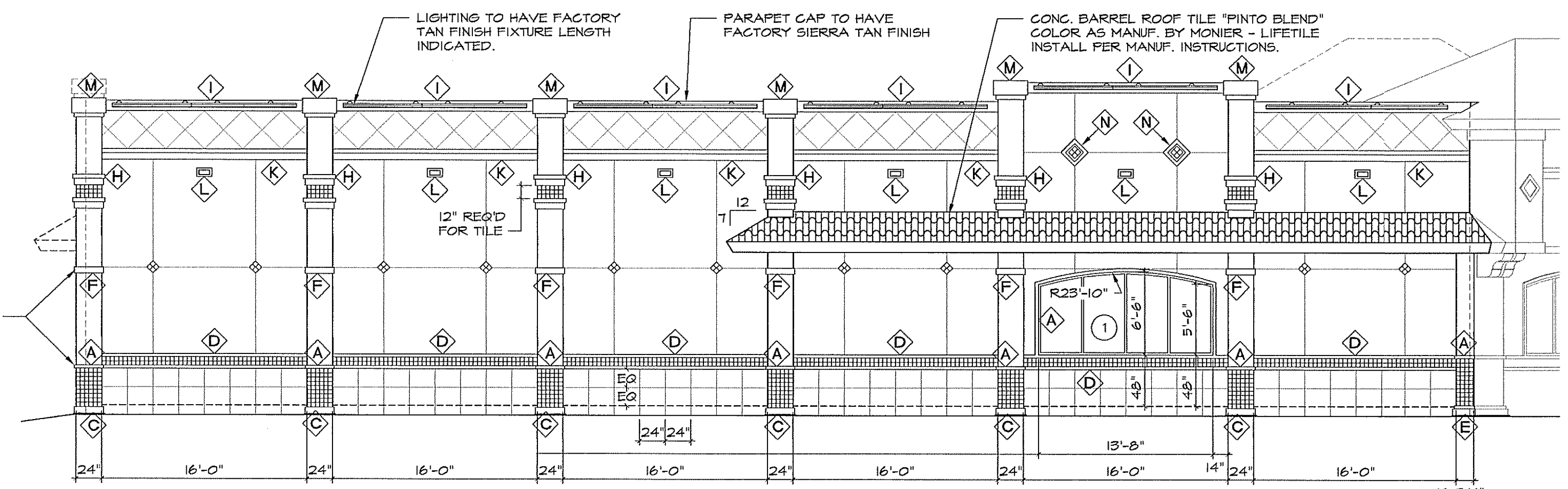
- ELEV. 28'-10" TOP OF FRAMING
- ELEV. 25'-4" TOP OF ICF WALL
- ELEV. 23'-10" TOP OF ICF WALL
- ELEV. 20'-0" TOP OF BAND 'K'
- ELEV. 15'-4" BOTTOM OF BAND 'H'
- ELEV. 12'-0" BOTTOM OF SOFFIT
- ELEV. 4'-0" TOP OF BANDING 'D'
- ELEV. 0'-0" FINISHED FLOOR



- 5/8" FLOAT STUCCO PAINTED "DAPPER TAN" AS MANUF. BY GLIDDEN.
- 4x4 WALL TILE INSTALLED IN A RANDOM PATTERN. SEE GENERAL NOTES THIS SH. FOR ADDITIONAL INFO. TYP.
- ALL BANDING TO BE PAINTED "ABC TAN" AS MANUF. BY GLIDDEN.
- 5/8" KNOCK DOWN STUCCO PAINTED "TUSK TUSK" AS MANUF. BY GLIDDEN.
- 4x4 WALL TILE INSTALLED IN A RANDOM PATTERN. SEE GENERAL NOTES THIS SH. FOR ADDITIONAL INFO. TYP.
- 5/8" MED FLOAT STUCCO PAINTED "IVORY BEIGE" AS MANUF. BY GLIDDEN.
- PLASTIC 'V' GROOVE TYP. EQ. SPACES

2 NORTH ELEVATION  
SCALE: 1/8" = 1'-0"

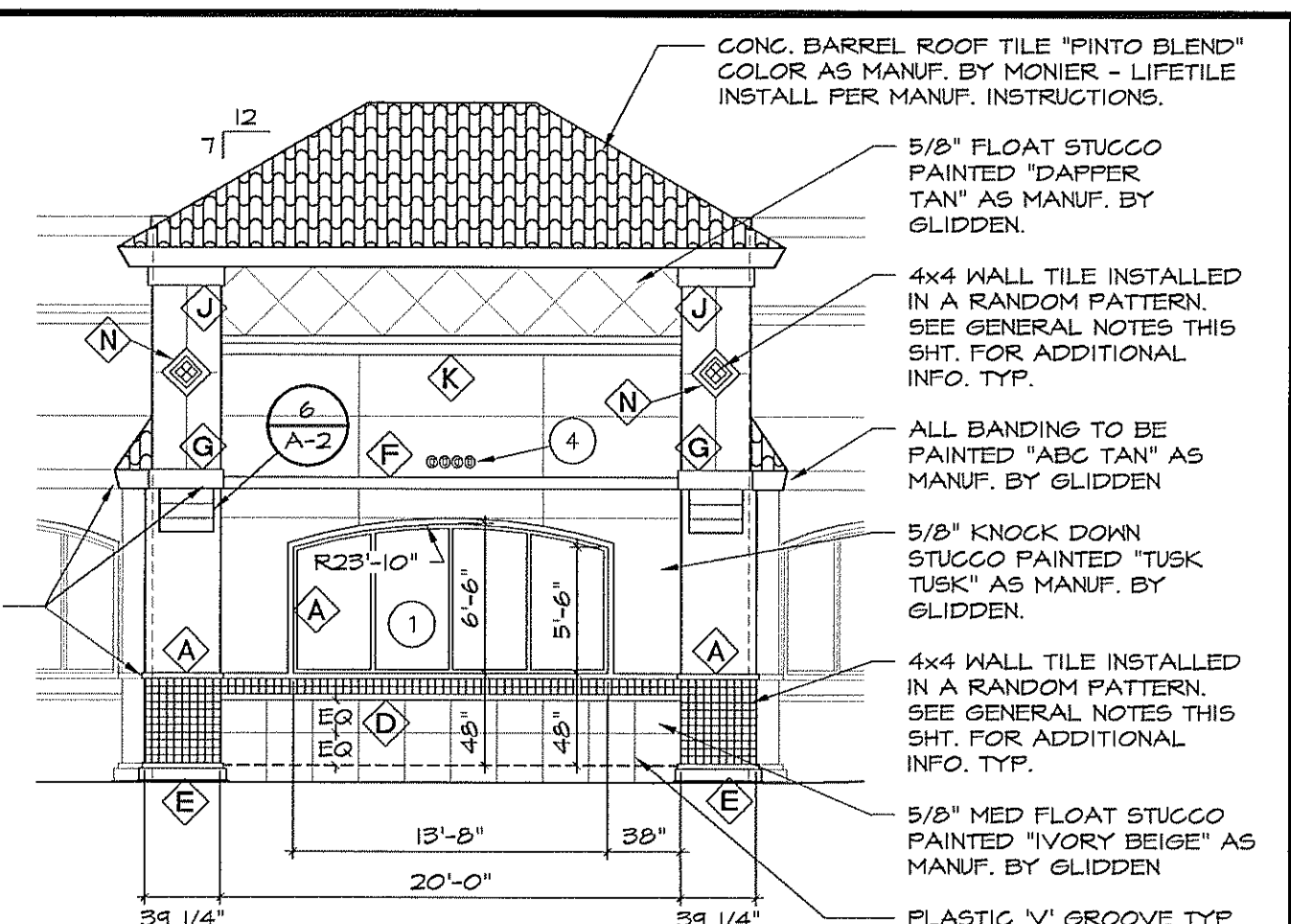
- ELEV. 28'-10" TOP OF FRAMING
- ELEV. 25'-4" TOP OF ICF WALL
- ELEV. 23'-10" TOP OF ICF WALL
- ELEV. 20'-0" TOP OF BAND 'K'
- ELEV. 17'-1" CENTER SCUPPER 'L'
- ELEV. 15'-4" BOTTOM OF BAND 'H'
- ELEV. 12'-0" BOTTOM OF SOFFIT
- ELEV. 10'-6" TOP OF WINDOW
- ELEV. 4'-0" TOP OF BANDING 'D'
- ELEV. 0'-0" FINISHED FLOOR



- 5/8" FLOAT STUCCO PAINTED "DAPPER TAN" AS MANUF. BY GLIDDEN.
- 4x4 WALL TILE INSTALLED IN A RANDOM PATTERN. SEE GENERAL NOTES THIS SH. FOR ADDITIONAL INFO. TYP.
- ALL BANDING TO BE PAINTED "ABC TAN" AS MANUF. BY GLIDDEN.
- 5/8" KNOCK DOWN STUCCO PAINTED "TUSK TUSK" AS MANUF. BY GLIDDEN.
- 4x4 WALL TILE INSTALLED IN A RANDOM PATTERN. SEE GENERAL NOTES THIS SH. FOR ADDITIONAL INFO. TYP.
- 5/8" MED FLOAT STUCCO PAINTED "IVORY BEIGE" AS MANUF. BY GLIDDEN.
- PLASTIC 'V' GROOVE TYP. EQ. SPACES

3 WEST ELEVATION  
SCALE: 1/8" = 1'-0"

- ELEV. 28'-10" TOP OF FRAMING
- ELEV. 25'-4" TOP OF ICF WALL
- ELEV. 23'-10" TOP OF ICF WALL
- ELEV. 20'-0" TOP OF BAND 'K'
- ELEV. 15'-4" BOTTOM OF BAND 'H'
- ELEV. 12'-0" BOTTOM OF SOFFIT
- ELEV. 10'-6" TOP OF WINDOW
- ELEV. 4'-0" TOP OF BANDING 'D'
- ELEV. 0'-0" FINISHED FLOOR

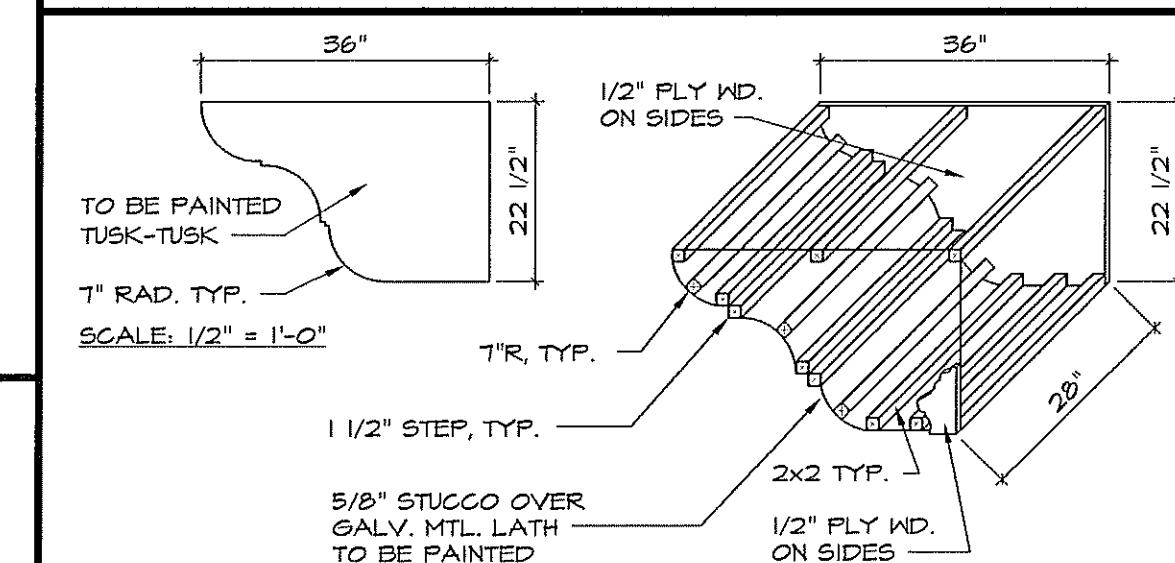


- 5/8" FLOAT STUCCO PAINTED "DAPPER TAN" AS MANUF. BY GLIDDEN.
- 4x4 WALL TILE INSTALLED IN A RANDOM PATTERN. SEE GENERAL NOTES THIS SH. FOR ADDITIONAL INFO. TYP.
- ALL BANDING TO BE PAINTED "ABC TAN" AS MANUF. BY GLIDDEN.
- 5/8" KNOCK DOWN STUCCO PAINTED "TUSK TUSK" AS MANUF. BY GLIDDEN.
- 4x4 WALL TILE INSTALLED IN A RANDOM PATTERN. SEE GENERAL NOTES THIS SH. FOR ADDITIONAL INFO. TYP.
- 5/8" MED FLOAT STUCCO PAINTED "IVORY BEIGE" AS MANUF. BY GLIDDEN.
- PLASTIC 'V' GROOVE TYP. EQ. SPACES

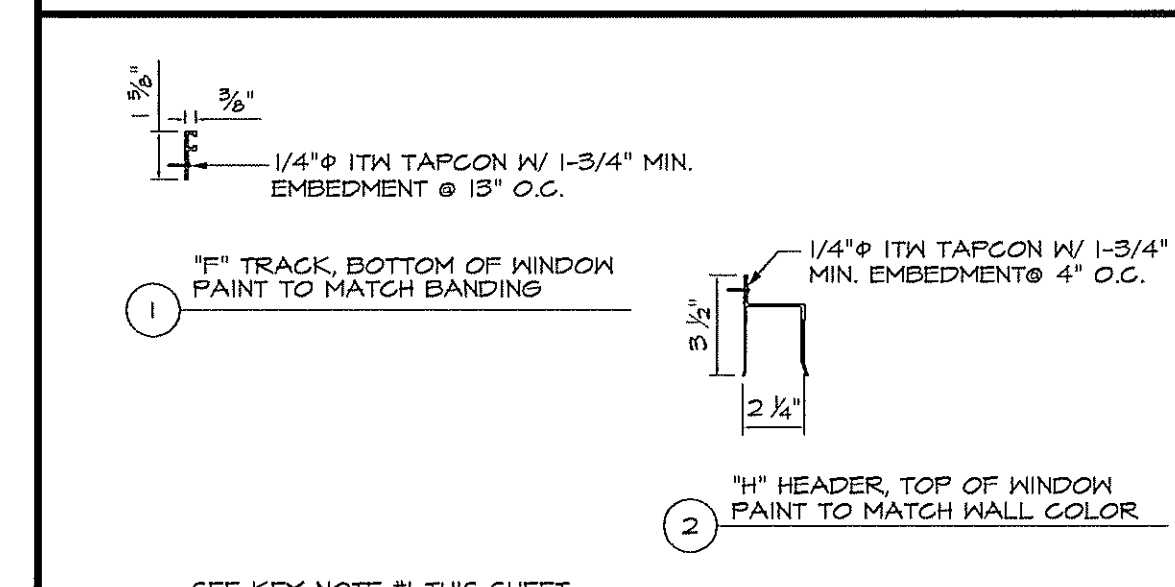
4 SOUTH WEST ELEVATION  
SCALE: 1/8" = 1'-0"

5 SOUTH ELEVATION  
SCALE: 1/8" = 1'-0"

- KEY NOTES:**
- ARCH ALUMINUM & GLASS COMPANY SERIES 4500 ALUMINUM FLUSH GLAZED STOREFRONT SYSTEM W/ 1/4" LAMINATED SAFETY GLASS. ALL STORE FRONT WINDOWS SHALL BE PROVIDED W/ REMOVABLE 2250° ALUMINUM STORM PANEL AS MANUFACTURED BY ALL BROWARD HURRICANE PANEL INC. OR EQUAL. SEE DETAIL 7 THIS SHEET.
  - NABCO 67-115 SINGLE SLIDE "IMPACT RESISTANT" AUTO DOOR WITH EMERGENCY BREAKOUT. STOREFRONT DOORS SHALL BE PROVIDED W/ EXTRUDED ALUM. ROLL-UP SECURITY SHUTTER 40"x18"x14" 10" HOUSING SIZE. BRONZE ANODIZED IN COLOR MODEL NO. "58MM-BERTHA" AS MANUF. BY AMERICAN SHUTTER SYSTEMS
  - CECO METAL DOOR - TO BE PAINTED "IVORY BEIGE" REFER TO DOOR / HARDWARE SCHEDULE ON SHEET A-1 FOR ADD. INFO.
  - 6" BLK. PLASTIC LETTERS MOUNTED TO BUILDING



6 CORBEL DETAIL  
NOT TO SCALE



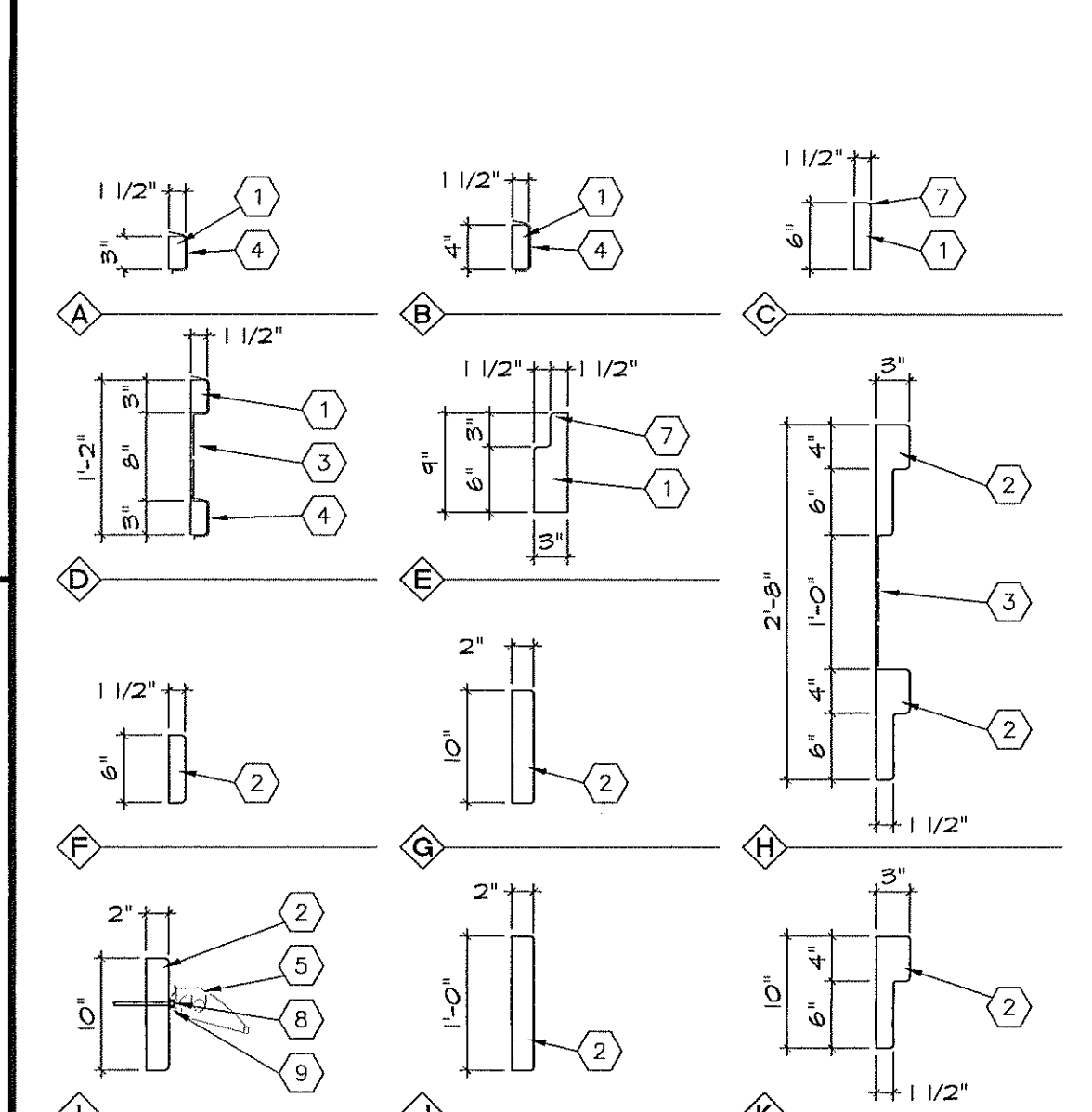
7 SHUTTER INSTALLATION DETAILS  
NOT TO SCALE

- GENERAL NOTES:**
- CONTRACTOR SHALL FIELD VERIFY ALL DIMENSIONS PRIOR TO CONSTRUCTION.
  - THE METHOD OF ATTACHMENT WILL NOT AFFECT THE STRUCTURAL INTEGRITY OF THE FLOOR OR CEILING ASSEMBLY TO WHICH IT IS ATTACHED.
  - ALL BANDS AROUND DOORS, WINDOWS, ETC. SHALL HAVE A FLOAT FINISH AND ALL BANDS TO BE CAULKED CONT.
  - ALL EXTERIOR SURFACES SHALL BE PRIMED PRIOR TO FINAL PAINT APPLICATION.
  - ALL EXTERIOR PAINT SHALL INCLUDE A "MILDEW INHIBITOR".
  - CORNER LATH SHALL BE USED WHERE APPLICABLE, IE: COLUMNS, BUILDING CORNERS, ETC.
  - 1/4" PLASTIC EXPANSION SHALL BE USED TO ACHIEVE "V-GROOVE" PANEL EFFECT. PROVIDE STUCCO CONTROL JOINTS PER 100 SQ. FT.
  - EXTERIOR 4x4 WALL TILE, ANTIQUA "CORALLO" AND ANTIQUA "NOCE", AS MANUF. BY G.I.R., INSTALL IN A RANDOM PATTERN.
  - CONG. BARREL ROOF TILE "PINTO BLEND" #0051 AS MANUF. BY MONIER - LIFE TILE. INSTALL PER MANUF. INSTRUCTIONS.
  - ALL PRIMARY EXTERIOR WALLS TO HAVE A SYNTHETIC STUCCO FINISH "TUSK TUSK" IN COLOR. CONTACT ICI DULUX PAINTS. PH. (407) 855-1512
  - LOWER PORTION OF THE EXT. WALL TO HAVE A SYNTHETIC STUCCO FINISH "IVORY BEIGE" IN COLOR. CONTACT ICI DULUX PAINTS. PH. (407) 855-1512
  - ALL BANDING TO BE "ABC TAN". CONTACT ICI DULUX PAINTS. PH. (407) 855-1512
  - UPPER PORTION OF EXTERIOR WALL TO HAVE A SYNTHETIC STUCCO FINISH "DAPPER TAN" IN COLOR W/ DIAMOND V-GROOVE PATTERN. CONTACT ICI DULUX PAINTS. PH. (407) 855-1512
  - UNDERSIDE OF SOFFIT TO HAVE A SYNTHETIC STUCCO FINISH "TUSK TUSK" IN COLOR. CONTACT ICI DULUX PAINTS. PH. (407) 855-1512
  - ALL EXTERIOR METAL DOORS AND TRIM TO BE PAINTED "IVORY BEIGE" OIL BASE. CONTACT ICI DULUX PAINTS. PH. (407) 855-1512
  - ALL STOREFRONT WINDOW & SLIDING DOOR FRAMES TO HAVE A BRONZE ANODIZED ALUMINUM FINISH.
  - SCUPPER HEIGHT TO BE FIELD VERIFIED, REFER TO STRUCTURAL ELEVATIONS FOR ADDITIONAL INFORMATION.
  - EXTERIOR WINDOWS AND GLASS DOORS SHALL BEAR THE AAMA, WENMA OR OTHER APPROVED LABEL INDICATING COMPLIANCE WITH ANSIA/AAMA/NWMA 1011.5, 2-9T AND PROVIDE DESIGN PRESSURES AS CALCULATED BY THE ARCHITECT OR ENGINEER OF THIS STRUCTURE. PROVIDE INSPECTOR WITH MANUFACTURER'S SHOP DRAWINGS FOR WINDOW INSTALLATION.
  - PAINT MIXTURE SCHEDULE:

SEMI-GLOSS LATEX IVORY BEIGE 2406-0100			SEMI-GLOSS LATEX TUSK TUSK 2402-0100		
(1) GALLON	(2) GALLON	(3) GALLON	(1) GALLON	(2) GALLON	(3) GALLON
B	BLK	45	1	BLK	5
25	YOK	45	4	YOK	45
B	OXR	20	4	FFR	20

SEMI-GLOSS LATEX ABC TAN 2406-0300			OIL ABC TAN 4308-0300		
(1) GALLON	(2) GALLON	(3) GALLON	(1) GALLON	(2) GALLON	(3) GALLON
52	BLK	4P4	1P12	BLK	5P60
1P4	YOK	5P20	1P16	YOK	6P16
28	OXR	2P12	40	OXR	3P8
1P32	WHT	1P32	2	GRN	10
			1P48	WHT	8P48



DETAIL NOTES:

- SOLID STUCCO BAND
- FOAM BAND W/ W/M & SYNTHETIC FINISH - COLOR TO BE "ABC TAN"
- 4x4 WALL TILE
- 1/4" STUCCO STOP TO FORM BAND
- LIGHT FIXTURE
- 4" x 10" SCUPPER SEE ROOF PLAN FOR ADD. INFO.
- "J" CLIP
- 1/4" x 6" HEX HEAD TAPCON, TYP. OF 2
- HURRICANE CLIP" MIN. 3 PER LIGHT FIXTURE 6" MAX. FROM EA. END, TYP.

- IMPORTANT NOTES:**
- ALL CUSTOM SHAPES T-O" A.F.F. AND ABOVE TO BE FOAM (E.P.S.). ALL OTHERS TO BE SOLID STUCCO AS INDICATED, SEE DETAILS.
  - THESE ARE CRITICAL DIMENSIONS AND SHALL NOT VARY
  - BANDING TO BE APPLIED AFTER WALL IS STUCCOED.
  - ALL BANDS AROUND DOORS, WINDOWS, ETC. SHALL HAVE A FLOAT FINISH.
- 8 STUCCO SHAPES**  
SCALE: 1" = 1'-0"

REVISIONS BY


**ARTERBURY ARCHITECTS, INC.**  
A.A.26000718  
1008 MAITLAND CENTER COMMONS BLVD  
(SUITE 216) MAITLAND, FL. 32751  
TEL: (407) 774-2233  
FAX: (407) 774-7377

*Handwritten signature and date: 5-15-09*

**ABC LIQUORS, INC.**  
8889 S. ORANGE AVE. - ORLANDO, FL. 32809  
ABC STORE NO. 197  
PALM COAST, FL.

ARCHITECTURAL ELEVATIONS

DRAWN: M. MAISCO  
CHECKED: S. RIVERA  
DATE: 5-15-09  
SCALE: AS NOTED  
JOB No: 197  
SHEET

A-2