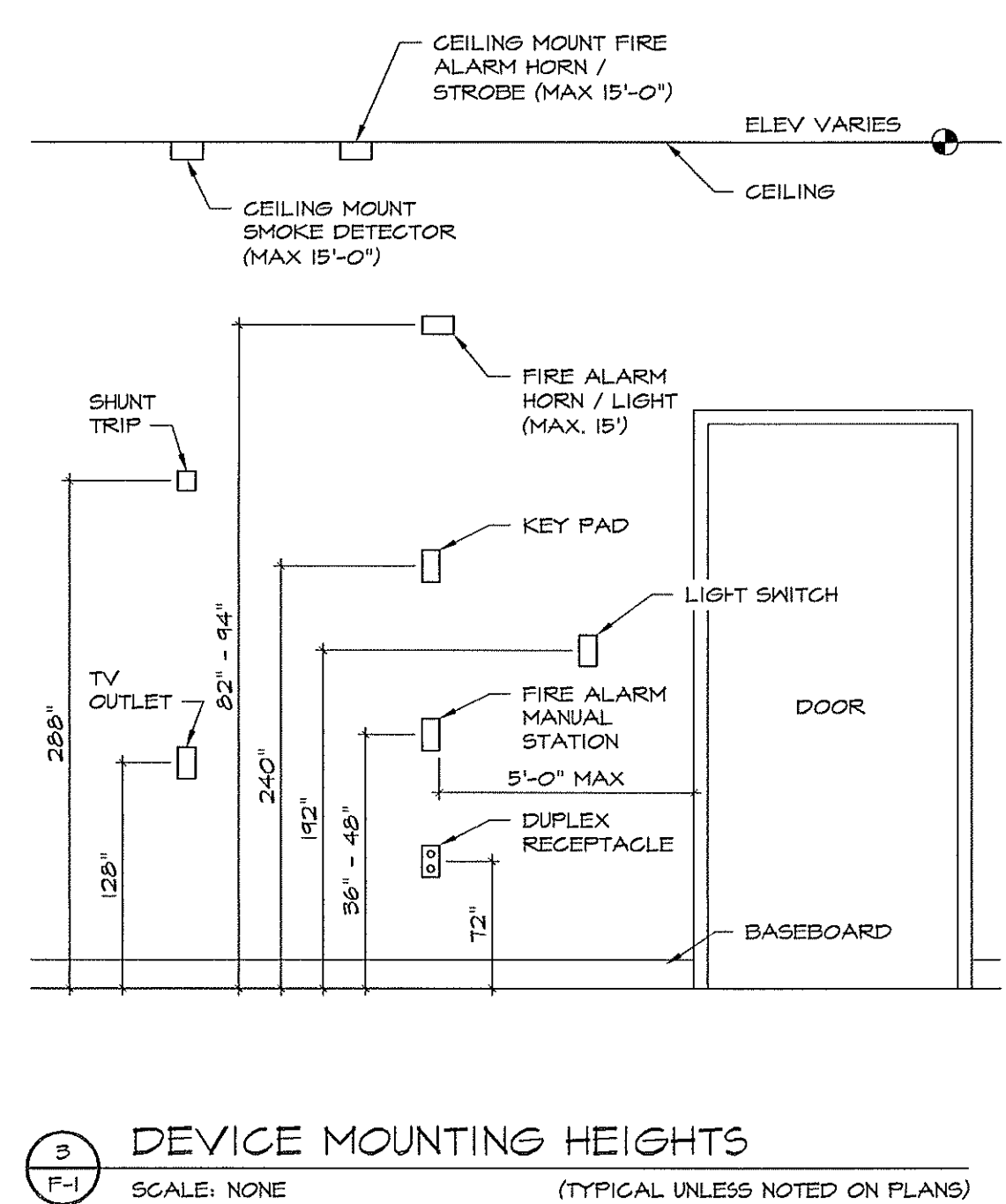


FIRE ALARM PLAN
SCALE: 1/8" = 1'-0"



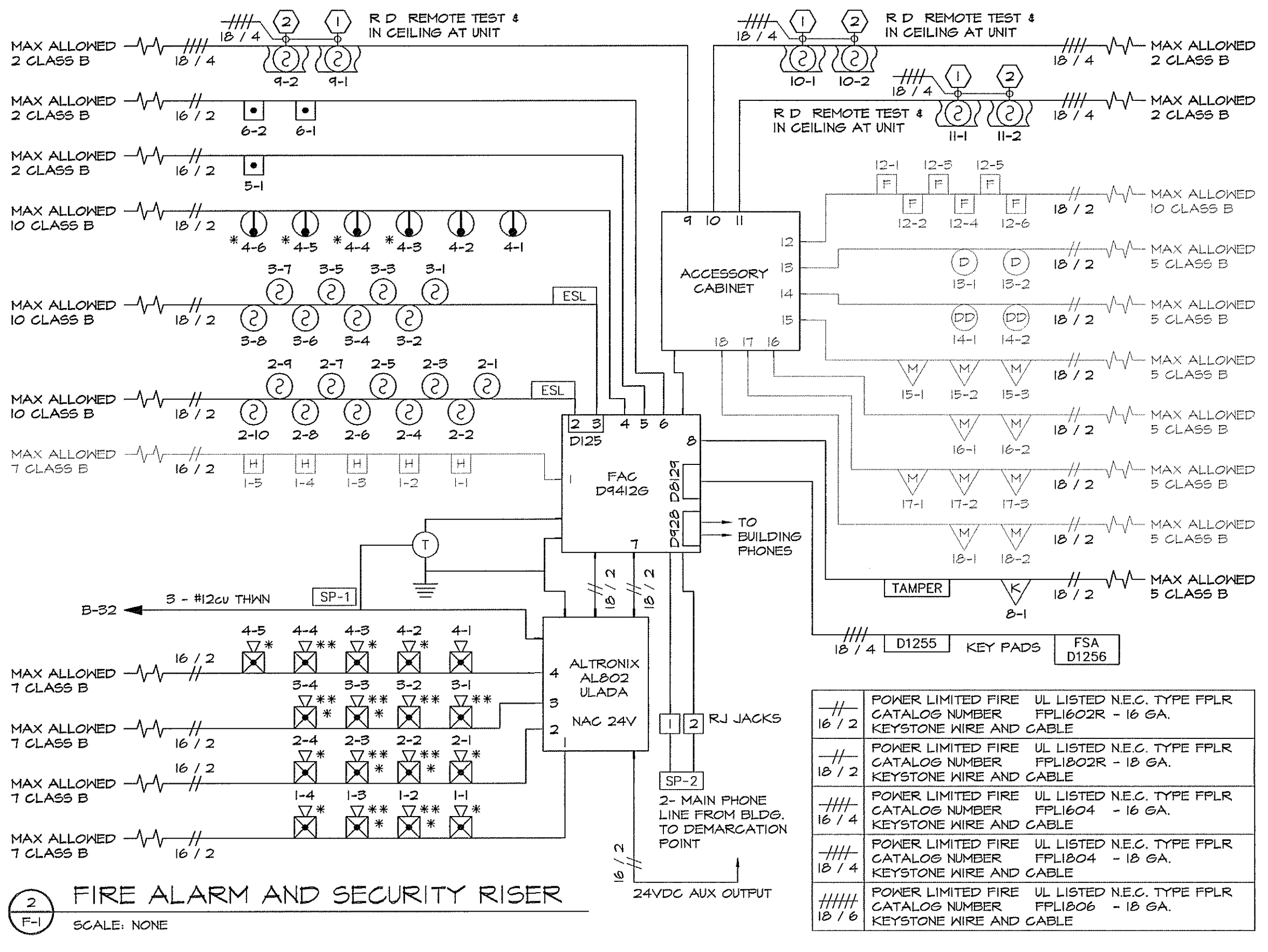
NOTE: REFER TO ELECT LIGHTING PLAN FOR EXIT, EMERGENCY, AND NIGHT LIGHTING LOCATIONS.

SYMBOL	QTY (DEVICES)	QTY (EQUIP.)	DESCRIPTION	LOCATION	MANUFACTURER	REMARKS
NAC	1	1	ALB02ULADA HORN STROBE / POWER MODULE	NEXT TO COMMUNICATOR	ALTRONIX	
FAC	1	1	D94126V2 FIRE ALARM COMMUNICATOR	WALL MOUNT IN ELECTRICAL ROOM	BOSCH	ACC. CABINET BOSCH - D9128 x 2
T	1	1	D8004 TRANSFORMER ENCLOSURE & ELECTRICAL RECEPTACLE	OVER DEDICATED ALARM ELECTRICAL RECEPTACLE	BOSCH	
ESL	2	2	ESL505 CLEANME MODULE * 20 SMOKE DETECTORS MAX.	WALL MOUNT	ESL	24V DC TERMINALS 12V DC TERMINALS
FSA	1	1	D1256 ALPHA KEYPAD (ANNUNCIATOR TYPE)	FLUSH WALL 40" TO 48" A.F.F.	BOSCH	BOSCH D-428 D-8129
SP-1	1	1	DTK-1204H SURGE PROTECTOR	AT PANELS	DITEK	
SP-2	1	1	26060C / QC SURGE PROTECTOR	AT PANELS	CIRCA	
SP-3	1	1	DTK-22PSCPX SURGE PROTECTOR	AT PANELS	DITEK	
▲	1	1	FIRE DEPARTMENT STORE KEY ENCLOSURE	ABOVE FRONT DOOR	FIRE DEPARTMENT STANDARD	
—	13		END OF LINE RESISTOR	IN BOX OR AT DEVICE - SEE POINT ASSIGNMENT	N/A	
⊗	1		8EG3 24 PWR @ 75 CD AUDIO & VISUAL	WALL MOUNTED 80" A.F.F.	GENTEX	
⊗	7		WSES 75 WR GEN24 SERIES W/ 60E WEATHER RESISTANT ENCLOSURE	WALL MOUNTED 80" A.F.F.	GENTEX	
⊗	3		GGC24CR @ 75 CD AUDIO & VISUAL	CEILING MOUNTED (MTD. 15" A.F.F. MAX)	GENTEX	
⊗	6		GGC24CR @ 95 CD AUDIO & VISUAL	CEILING MOUNTED (MTD. 15" A.F.F. MAX)	GENTEX	
⊗	10		ESL521B SMOKE DETECTOR	CEILING	ESL	
⊗	6		DH00ACDGLP SMOKE DUCT DETECTOR	SURFACE MOUNT	SYSTEM SENSOR	
⊗	3		MODEL 1 T FULL STATION	FLUSH WALL @ ENTRY 40" TO 48" A.F.F.	RSG	
	44	23	TOTAL NUMBER OF EQUIPMENT / DEVICES INSTALLED			

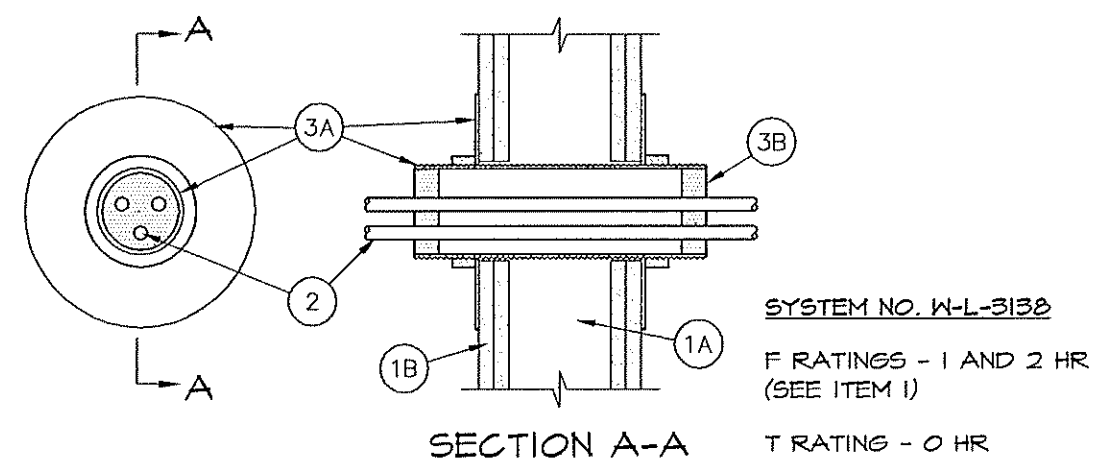


DEVICE MOUNTING HEIGHTS
SCALE: NONE (TYPICAL UNLESS NOTED ON PLANS)

FIRE ALARM SYSTEM POINT LIST				SECURITY ALARM SYSTEM POINT LIST			
POINT	ZONE DESCRIPTION	FACP	NOTIFICATION CIRCUITS	POINT	ZONE DESCRIPTION	POINT	ZONE DESCRIPTION
FT-2	SMOKE DETECTOR	NAC-1	HORN & STROBE SUPERVISION	PT-1	HOLD UP	PT-14	FRONT DOOR
FT-3	SMOKE DETECTOR	NAC-2	HORN & STROBE SUPERVISION	PT-7	FACP CONNECTION	PT-15	FRONT STORE PIR
FT-4	HEAT DETECTORS	NAC-3	HORN & STROBE SUPERVISION	PT-8	TAMPER KNOX BOX	PT-16	FRONT STORE PIR
FT-5	FRONT STORE PULL STATION	NAC-4	HORN & STROBE SUPERVISION	PT-12	GLASS BREAK	PT-17	REAR STORE PIR
FT-6	REAR STORE PULL STATION			PT-13	REAR DOOR	PT-18	ROOM PIR
FT-9	A/C DUCT SMOKE DETECTOR #1			NOTE: THIS IS AN INSTALLATION DIAGRAM AND IT IS EXPECTED THAT THE SYSTEM WILL BE INSTALLED IN ACCORD WITH THIS DIAGRAM.			
FT-10	A/C DUCT SMOKE DETECTOR #2						
FT-11	A/C DUCT SMOKE DETECTOR #3						



FIRE ALARM AND SECURITY RISER
SCALE: NONE



SECTION A-A
T RATING - 0 HR
F RATINGS - 1 AND 2 HR (SEE ITEM I)

FIRE ALARM NOTES:

- CONTRACTOR IS RESPONSIBLE FOR PHONE LINE HOOK UP TO R.J31 JACK TO ALARM SYSTEM, AND PHONE LINES FROM PHONE BOARD TO ALARM BOARD. THE C.A.T.V. SYSTEM TO BE FULLY OPERATIONAL, 2-CONDUCTOR FROM ALARM CTO RELAY TO VCR FOR REAL TIME ACTIVATION.
- CONTRACTOR IS RESPONSIBLE TO PROVIDE A LOG BOOK AND DRAWINGS, WHICH SHALL BE ATTACHED TO FIRE ALARM PANEL.
- CONTRACTOR WILL SUPPLY ALL REQUIRED EQUIPMENT, TESTING AND MATERIAL TO SUPPLY ABC W/ A FULLY OPERATIONAL RADIONICS FIRE ALARM SYSTEM.
- CONTRACTOR IS RESPONSIBLE TO INSTALL THE FIRE ALARM SYSTEM TO MEET ALL CITY, COUNTY, N.F.P.A. AND FLORIDA ACCESSIBILITY CODES.
- NO WIRES TO BE EXPOSED.
- ALL FIRE ALARM WIRINGS TO BE APPROVED W/ COUNTY, STATE & CITY CODES.
- THE HEIGHTS OF THE KEY PAD, FULL STATIONS, STROBES, HORN STROBES TO MEET N.F.P.A. AND ALL STATE, COUNTY AND FLORIDA ACCESSIBILITY CODE REQUIREMENTS.
- PANEL AND ALL ACCESSORIES TO BE BOSCH / RADIONICS NO ACCEPTATION.
- ABC - ID #41067-001 IS TO MONITOR THIS SYSTEM W/ CENTRAL STATION CONTRACT # (401) 851-0000 (EXT. 2443), UL FILE # 526241 FIRE ALARM.
- CONTRACTOR TO PROVIDE AND APPLY ALL NECESSARY CERTIFICATION LABELS ON THE FIRE ALARM PANEL, AND FILE ALL REQD. PAPER WORK TO REGISTER AND CERTIFY THE PANELS.
- ALL LOW VOLTAGE WIRING TO MEET REQUIREMENTS OF UL LISTING TYPE FPLR. WIRING TO BE IN RACEWAY IN INACCESSIBLE LOCATIONS, ALL RACEWAYS TO HAVE APPROVED TRANSITION FITTINGS FROM IN ACCESSIBLE LOCATIONS TO ACCESSIBLE LOCATIONS.
- INSTALLATION AND LOCATION OF ALL HEAT, SMOKE, STROBES, HORN STROBES, FULL STATIONS, ANNUNCIATOR, ETC. TO BE COORDINATED W/ OTHER EQUIP.
- CONTRACTOR TO LABEL ALL DEVICES.
- ELECTRICAL CONTRACTOR TO PROVIDE A DEDICATED CIRCUIT LABELED IN RED AND MECHANICALLY PROTECTED, (FIRE ALARM POWER) PANEL B-32.
- ELECTRICAL CONTRACTOR TO PROVIDE 1-1/2" CHASE THROUGH FIREWALL TO TERMINATE ON EACH SIDE OF FIRE WALL (COVER 24" INCHES FROM EACH SIDE OF FIRE WALL) IN A 12"x12"x6" J BOX.
- ALL DEVICE LOCATION ARE APPROX. "VERIFY" OR AS STATED ON PLAN.
- ALL EQUIPMENT IDENTIFIED, COMPATIBLE & LISTED FOR USE & INDICATED ON PLANS INCLUDING UNIQUE IDENTIFICATION NUMBER.
- DUCT SMOKE DETECTOR REMOTE TEST SHALL BE MOUNTED CEILING TILE.
- SYSTEM INSTALLATION SHALL BE CABLED W/ MIN. 18 GA. WIRE SIZE. OPEN WIRE INSTALLATION CONDUIT SLEEVES USED FOR PROTECTION.
- ALL CONDUIT SHALL BE MIN. 1/2" Ø, MAX. 40% FILLED, TYP.
- ALL STROBE LIGHTS AND HORNS SHALL BE SYNCHRONIZED.
- KNOX BOX INSTALLED IN ACCORDANCE TO AUTHORITY HAVING JURISDICTION.
- ANNUNCIATOR SHALL BE INSTALLED IN KEY LOCK ENCLOSURE (CLEAR).
- DUCT SMOKE DETECTOR WILL BE SUPERVISION ONLY.
- ALL INITIATING, NOTIFICATION, SINGLE LINE CIRCUITS ARE GLASS B CIRCUITS.
- 24 VOLT POWER SUPPLIED FROM ALTRONIX AL802-ULADA AUX. POWER TO INITIATING DEVICES. (SMOKE DET., DUCT SMOKE DET., AND CLEAN ME MODULE)
- AA. ALARM CONTRACTOR WILL CONNECT TO FIRE ALARM SYSTEM.
- BB. A SEPARATE MONITORING PERMIT IS REQUIRED. INSTALLATION OF THE TELEPHONE SURGE SUPPRESSION AND OF THE CABLES CONNECTING THE DIALER TO THE PHONE LINE SURGE SUPPRESSION TO THE PHONE JACKS WILL BE INSTALLED BY THE MONITORING CONTRACTOR UNDER THE "FIRE ALARM SYSTEM MONITORING ONLY" PERMIT.
- CC. SURGE PROTECTORS ARE LOCATED AT PANEL BOARD.

DESIGN NO. W-L-3138
SCALE: NONE

REVISIONS	BY

ARTERBURY ARCHITECTS, INC.
AA 26000718
1009 WATLAND CENTER COMMONS BLVD
(SUITE 216) WATLAND, FL 32751
TEL: (407) 774-2233
FAX: (407) 774-7377

Capelli
2/28/09

ABC LIQUORS, INC.
8989 S. ORANGE AVE. - ORLANDO, FLA. 32809
ABC STORE NO. 197
PALM COAST, FL

FIRE ALARM PLAN
DRAWN: M. MAISCO
CHECKED: S. RIVERA
DATE: 5-15-09
SCALE: AS NOTED
JOB No: 197
SHEET
F-1