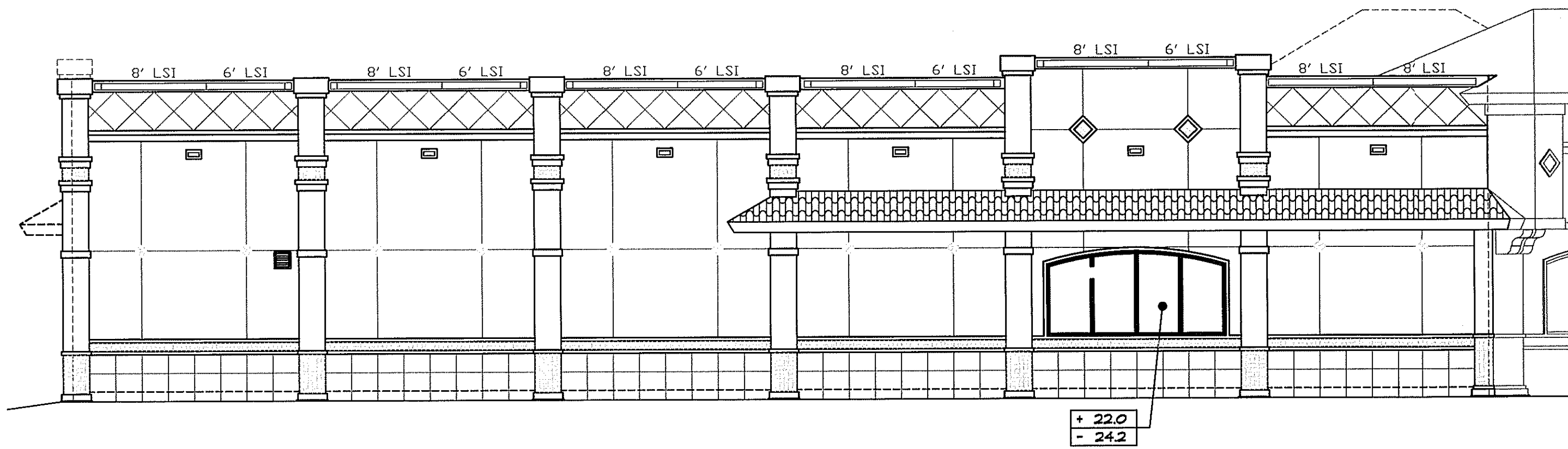


- 1 ELEV. 25'-4" TOP OF ICF WALL
- 2 ELEV. 23'-10" TOP OF ICF WALL
- 3 ELEV. 20'-0" TOP OF BAND 'K'
- 4 ELEV. 17'-11" CENTER SCUPPER 'L'
- 5 ELEV. 15'-4" BOTTOM OF BAND 'H'
- 6 ELEV. 12'-0" BOTTOM OF SOFFIT
- 7 ELEV. 10'-6" TOP OF WINDOW
- 8 ELEV. 4'-0" TOP OF BANDING 'D'
- 9 ELEV. 0'-0" FINISHED FLOOR



1 WEST ELEVATION (ARCHITECTURAL)  
SCALE: 1/8" = 1'-0"

+ POS  
- NEG  
DENOTES DESIGN WIND PRESSURES IN PSF

NOTE:  
ARCH. ELEV. SHOWN FOR REFERENCE ONLY  
REFER TO ARCH. ELEVATIONS FOR  
DETAILS & FINISHES.

KEY NOTES

- 1 WALL OPENING FRAMING - ALL LUMBER TO BE 2x10 P.T. S.Y.P. #2 OR BETTER
- 2 16 GA. CLIP ANGLE
- 3 EXPANSION ANCHORS 3/4" x 6" LONG SPACED AT MAX 4" FROM ENDS AND 16" O.C.
- 4 1 1/4" x 10 1/4" OPENING FOR RAIN WATER SCUPPERS, TYP. 6 LOCATIONS - SEE SHEET A-6 (ROOF PLAN) FOR ADDITIONAL INFORMATION.
- 5 12 3/4" SQUARE OPENING FOR STORMPROOF LOUVER - SEE EXTERIOR ELEVATIONS FOR ADD. INFO.

REVISIONS	BY

290 CITRUS TOWER BLDG  
SUITE 200  
CLERMONT, FL 34711  
PHONE: (352)242-0100  
FAX: (352)242-0302

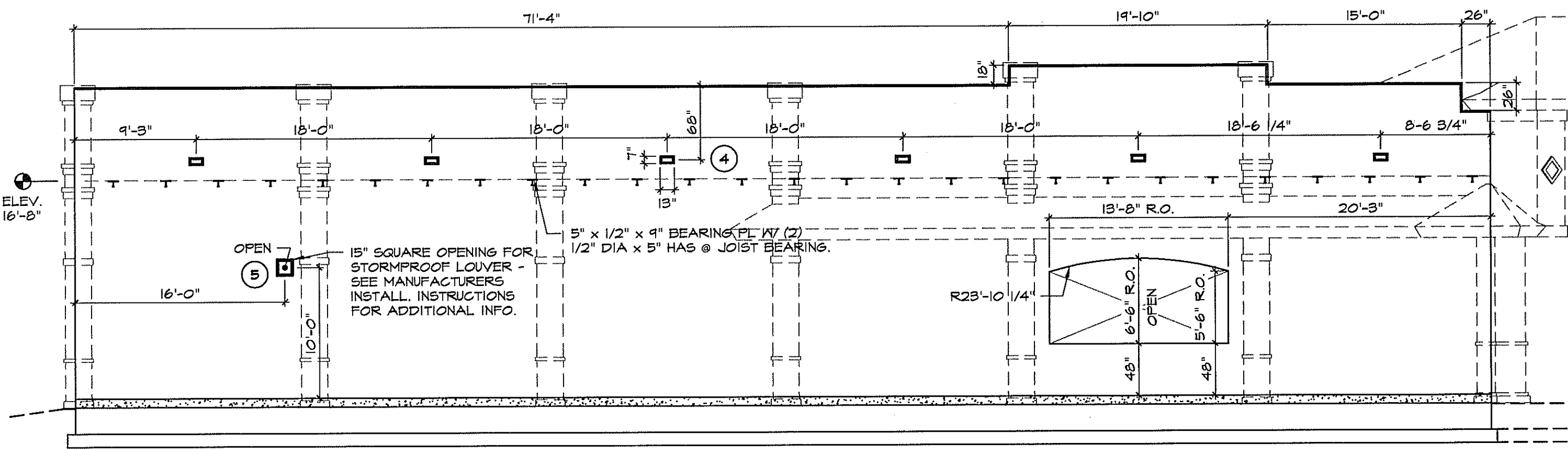
**Lindemann  
Bentzon  
Bojack**

ENGINEERING DESIGN INSPECTION <<

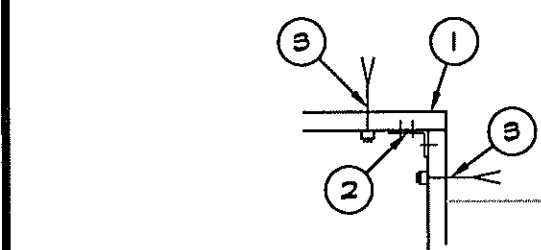
No. 65606  
TFL License  
Lindemann Bentzon Bojack Eng'g  
Certificate No. EB-0006971  
SEP 22 2009

Professional Engineer  
Lindemann Bentzon Bojack Eng'g  
13075 E. US HWY 1  
SUITE 100  
CLERMONT, FL 34711  
www.lbb.com

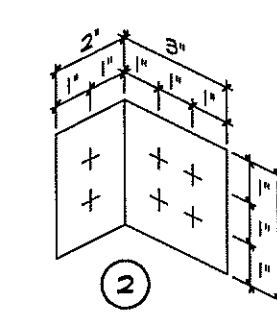
- 1 ELEV. 25'-4" TOP OF ICF WALL
- 2 ELEV. 23'-10" TOP OF ICF WALL
- 3 ELEV. 21'-8" TOP OF ICF WALL
- 4 ELEV. 10'-6" TOP OF WINDOW
- 5 ELEV. 4'-0" BOTT OF WINDOW
- 6 ELEV. 0'-0" FINISHED FLOOR



4 WEST ELEVATION (STRUCTURAL)  
SCALE: 1/8" = 1'-0"

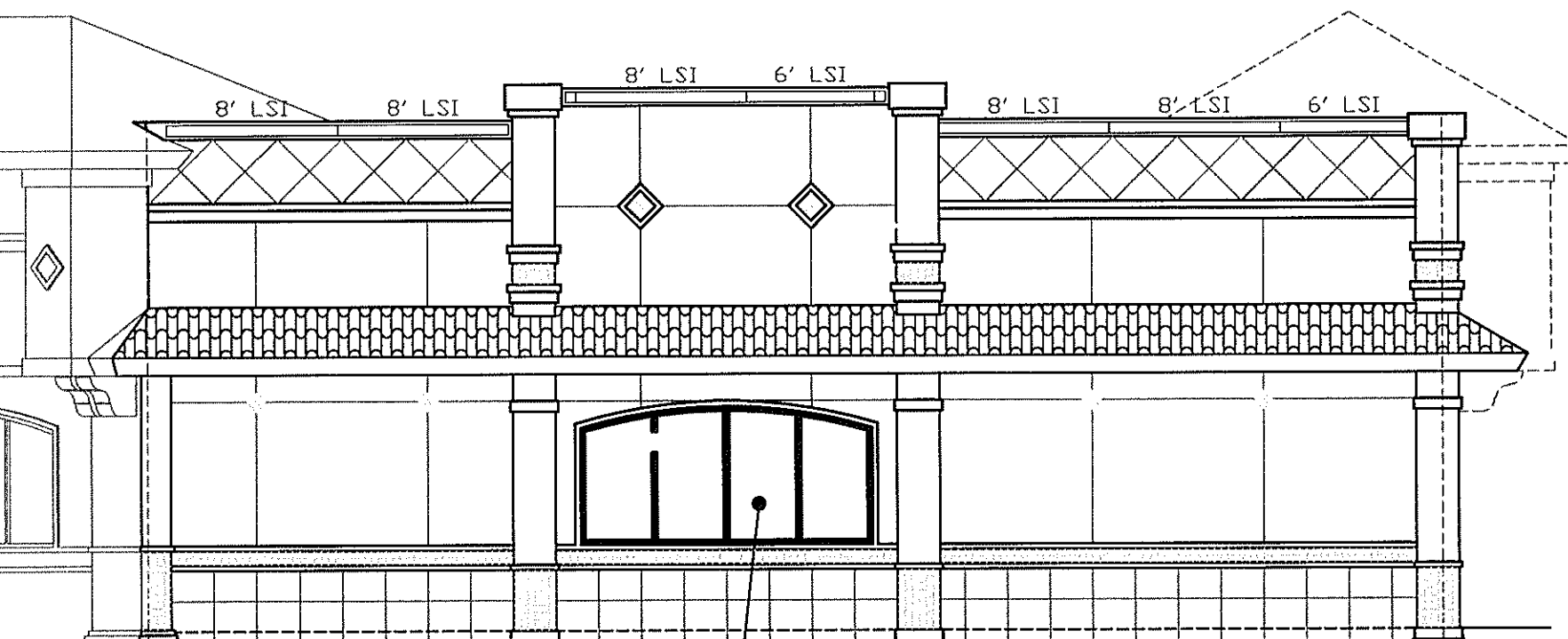


LOUVER OPENING



5 FRAMING AT LOUVER  
SCALE: 3/4" = 1'-0"

- 1 ELEV. 25'-4" TOP OF ICF WALL
- 2 ELEV. 23'-10" TOP OF ICF WALL
- 3 ELEV. 20'-0" TOP OF BAND 'K'
- 4 ELEV. 15'-4" BOTTOM OF BAND 'H'
- 5 ELEV. 12'-0" BOTTOM OF SOFFIT
- 6 ELEV. 10'-6" TOP OF WINDOW
- 7 ELEV. 4'-0" TOP OF BANDING 'D'
- 8 ELEV. 0'-0" FINISHED FLOOR



6 SOUTH ELEVATION (ARCHITECTURAL)  
SCALE: 1/8" = 1'-0"

+ POS  
- NEG  
DENOTES DESIGN WIND PRESSURES IN PSF

NOTE:  
ARCH. ELEV. SHOWN FOR REFERENCE ONLY  
REFER TO ARCH. ELEVATIONS FOR  
DETAILS & FINISHES.

- 1 ELEV. 28'-10" TOP OF FRAMING
- 2 ELEV. 23'-10" TOP OF ICF WALL
- 3 ELEV. 12'-0" BOTTOM OF SOFFIT
- 4 ELEV. 10'-6" TOP OF WINDOW
- 5 ELEV. 4'-0" TOP OF BANDING 'D'
- 6 ELEV. 0'-0" FINISHED FLOOR

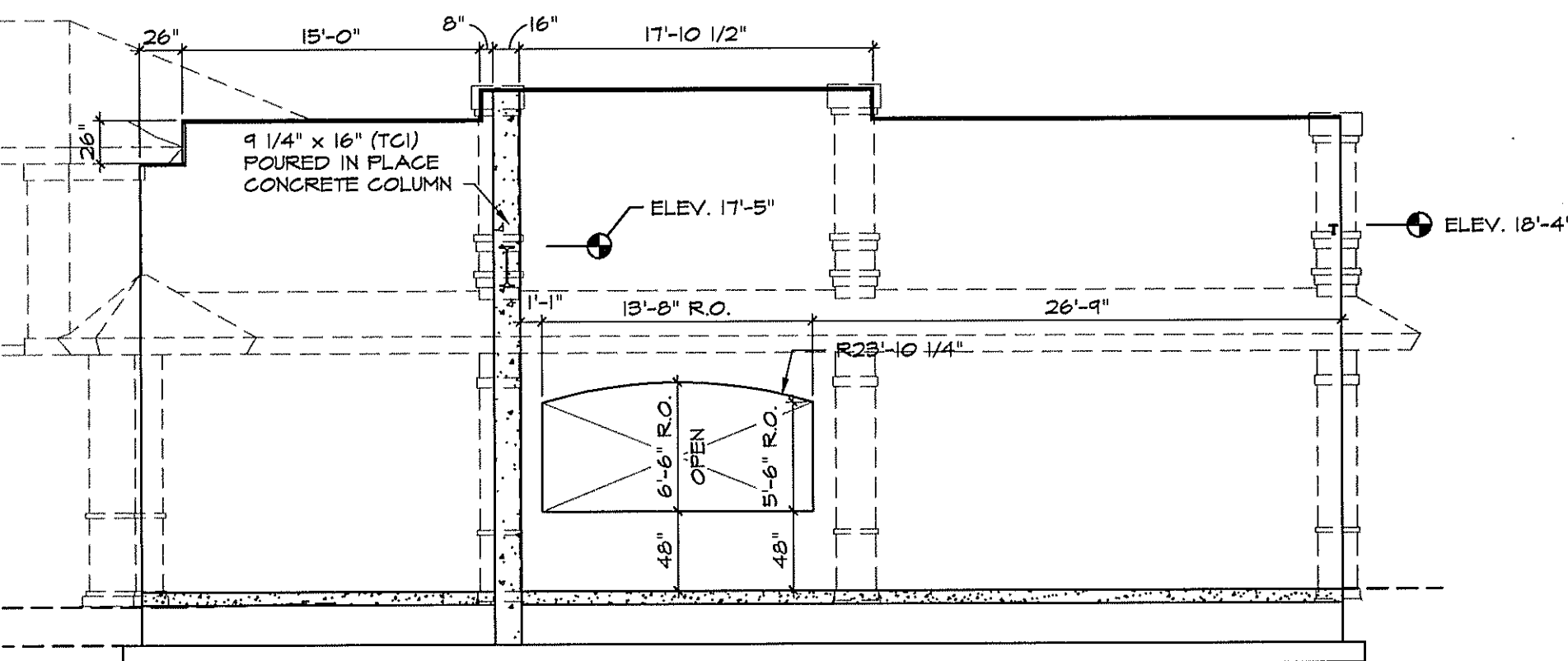


7 CORNER ELEVATION (ARCHITECTURAL)  
SCALE: 1/8" = 1'-0"

+ POS  
- NEG  
DENOTES DESIGN WIND PRESSURES IN PSF

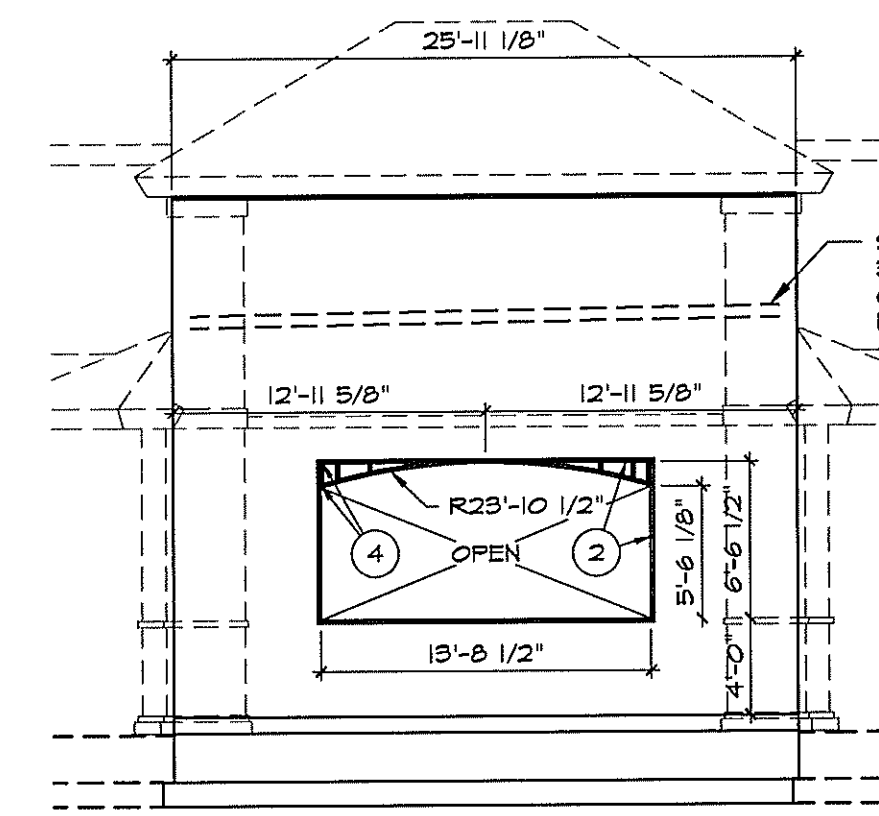
NOTE:  
ARCH. ELEV. SHOWN FOR REFERENCE ONLY  
REFER TO ARCH. ELEVATIONS FOR  
DETAILS & FINISHES.

- 1 ELEV. 25'-4" TOP OF ICF WALL
- 2 ELEV. 23'-10" TOP OF ICF WALL
- 3 ELEV. 21'-8" TOP OF ICF WALL
- 4 ELEV. 10'-6" TOP OF WINDOW
- 5 ELEV. 4'-0" BOTT OF WINDOW
- 6 ELEV. 0'-0" FINISHED FLOOR



8 SOUTH ELEVATION (STRUCTURAL)  
SCALE: 1/8" = 1'-0"

- 1 ELEV. 28'-10" TOP OF FRAMING
- 2 ELEV. 21'-8" TOP OF ICF WALL
- 3 ELEV. 12'-0" BOTTOM OF SOFFIT
- 4 ELEV. 10'-6" TOP OF WINDOW
- 5 ELEV. 4'-0" BOTT OF WINDOW
- 6 ELEV. 0'-0" FINISHED FLOOR



9 CORNER ELEVATION (STRUCTURAL)  
SCALE: 1/8" = 1'-0"

**ABC LIQUORS, INC.**  
8889 S. ORANGE AVE. - ORLANDO, FLA. 32809

**ABC STORE NO. 197**  
PALM COAST, FL

DRAWN:	M. MAISCO
CHECKED:	S. RIVERA
DATE:	2-6-04
SCALE:	AS NOTED
JOB No.	197
SHEET	

STRUCTURAL ELEVATIONS

S=4