

1 ROOF PLAN
SCALE: 1/8" = 1'-0"
TRUE NORTH PROJECT NORTH

TIMBER TRUSSES

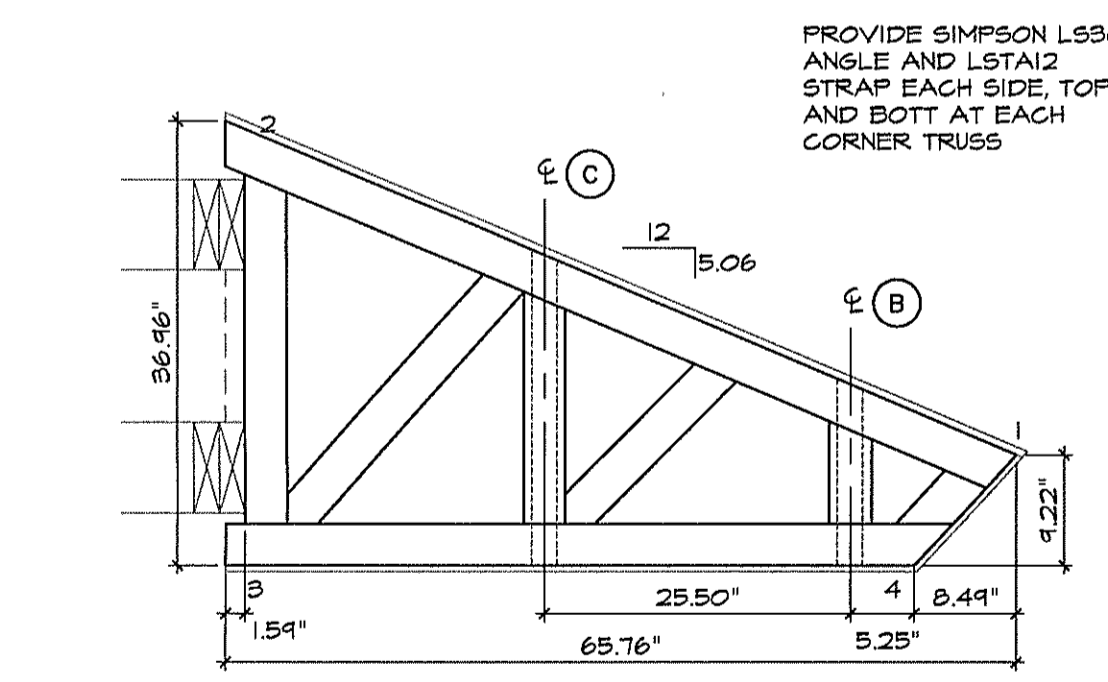
- DESIGN OF PRE-ENGINEERED TRUSSES SHALL COMPLY WITH TPI DESIGN SPECIFICATIONS FOR METAL CONNECTED WOOD TRUSSES.
- SUBMIT TRUSS ENGINEERING TO STRUCTURAL ENGINEER OF RECORD FOR REVIEW PRIOR TO FABRICATION. THE SUBMITTAL SHALL INDICATE DESIGN LOADS, WIND SPEED, HEIGHT ABOVE BEARING, TYPE OF EXPOSURE AND UPLIFT AND LATERAL LOADS AT BEARING POINTS.
- CONTRACTOR SHALL PROVIDE ALL BRACING REQUIRED BY TRUSS MANUFACTURER'S DESIGN. TEMPORARY BRACING SHALL ALSO BE PROVIDED IN ACCORDANCE WITH TPI "COMMENTARY AND RECOMMENDATIONS FOR BRACING WOOD TRUSSES HIB-41."

CONNECTORS

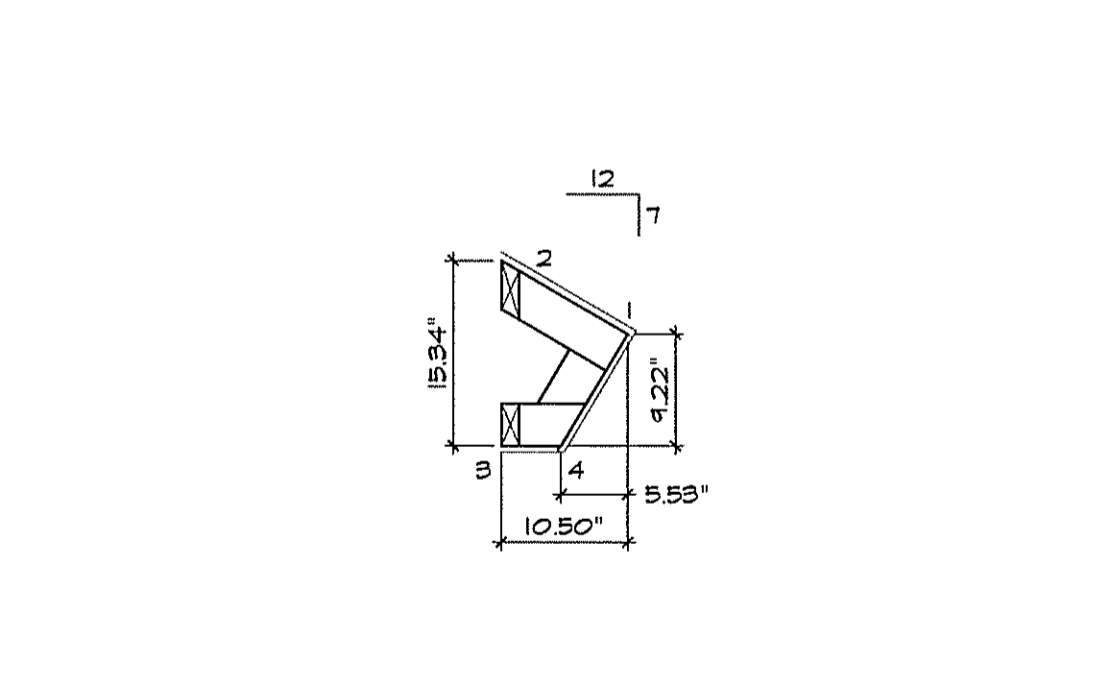
- ALL PRE-FABRICATED, PRE-ENGINEERED TIMBER CONNECTORS ARE AS SPECIFIED WITHIN SIMPSON STRONG-TIE CATALOG C-2007, OR USP FULL LINE CATALOG 54TH EDITION.
- CONNECTORS SHALL BE INSTALLED IN ACCORDANCE WITH THE INSTRUCTIONS GIVEN IN THE ABOVE REFERENCED CATALOGS.
- ALTERNATE CONNECTORS MAY BE ALLOWED PROVIDED THEY EQUAL OR EXCEED ALL SPECIFIC ALLOWABLE LOADS GIVEN IN THE ABOVE REFERENCED CATALOGS.

SIMPSON CONNECTOR LOAD TABLE

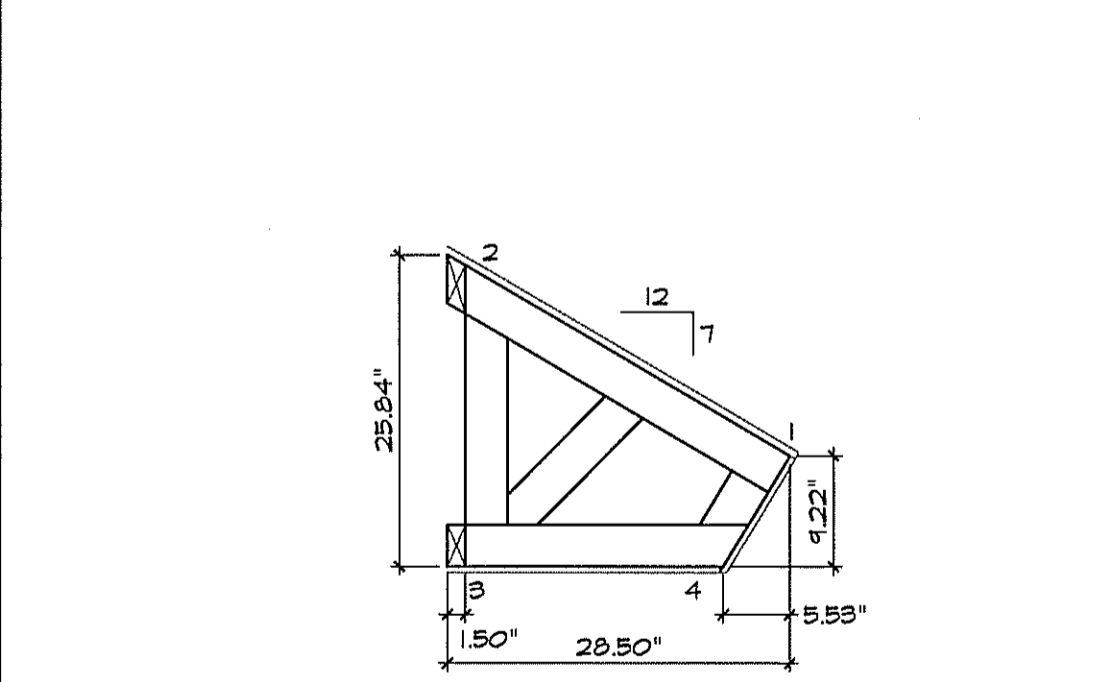
CONNECTOR	UPLIFT	F1	F2
HSA10	645#	1165#	940#
LSTA12	425#	N/A	N/A
L590	N/A	345#	N/A



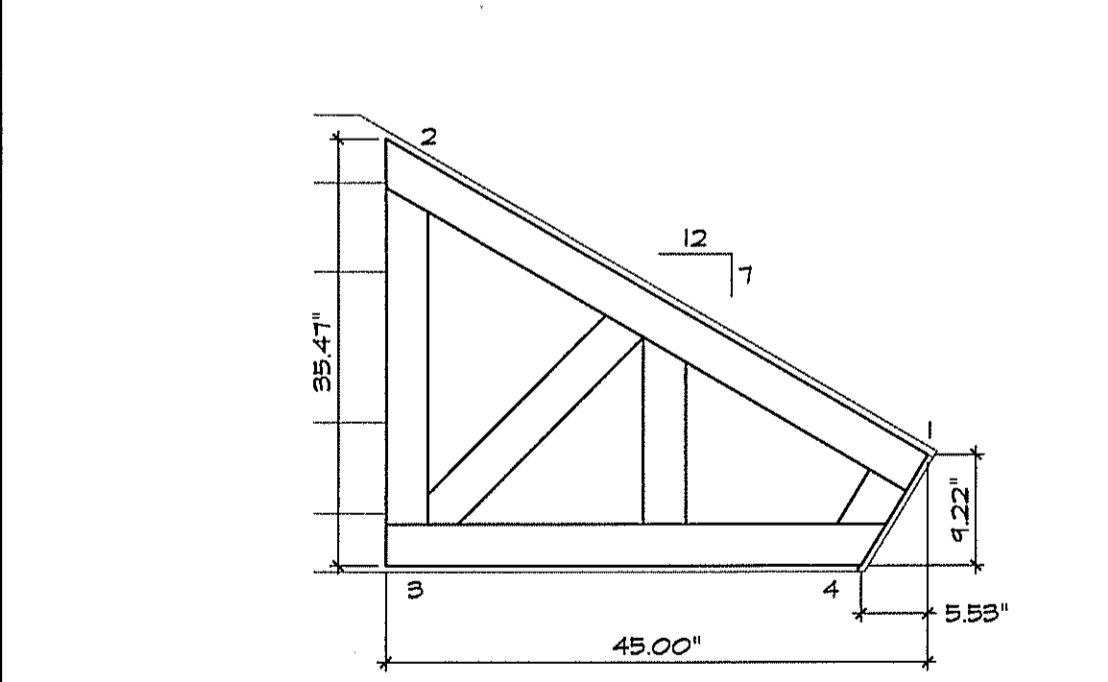
2 AWNING JOIST (A) 5 REQUIRED
SCALE: 3/4" = 1'-0"



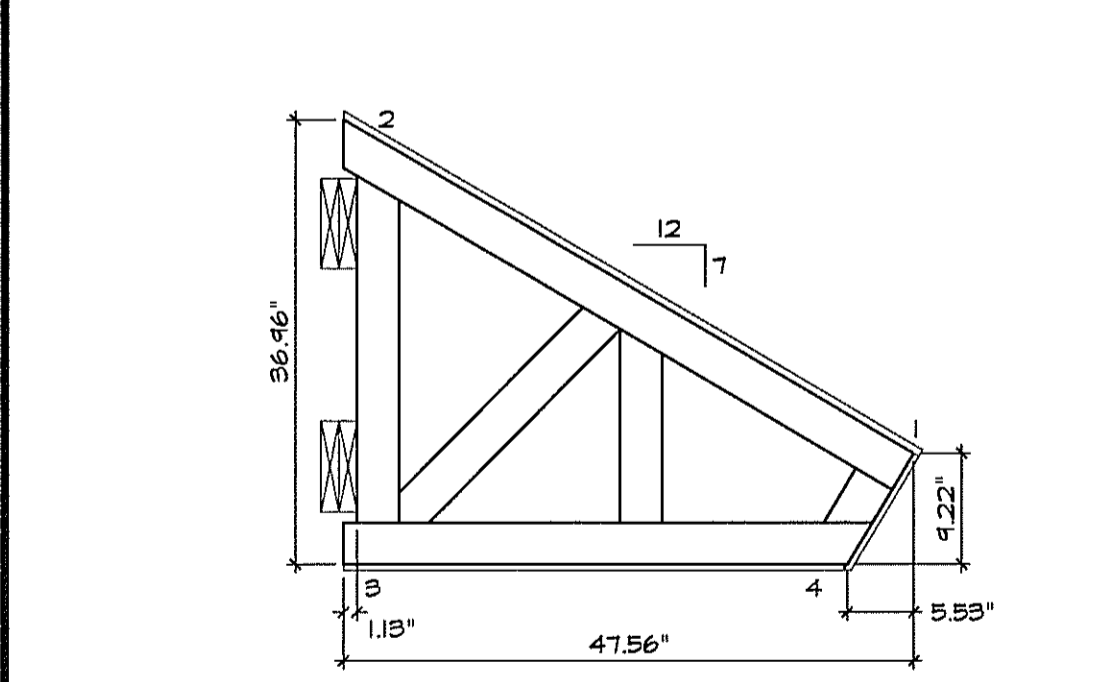
3 AWNING JOIST (B) 10 REQUIRED
SCALE: 3/4" = 1'-0"



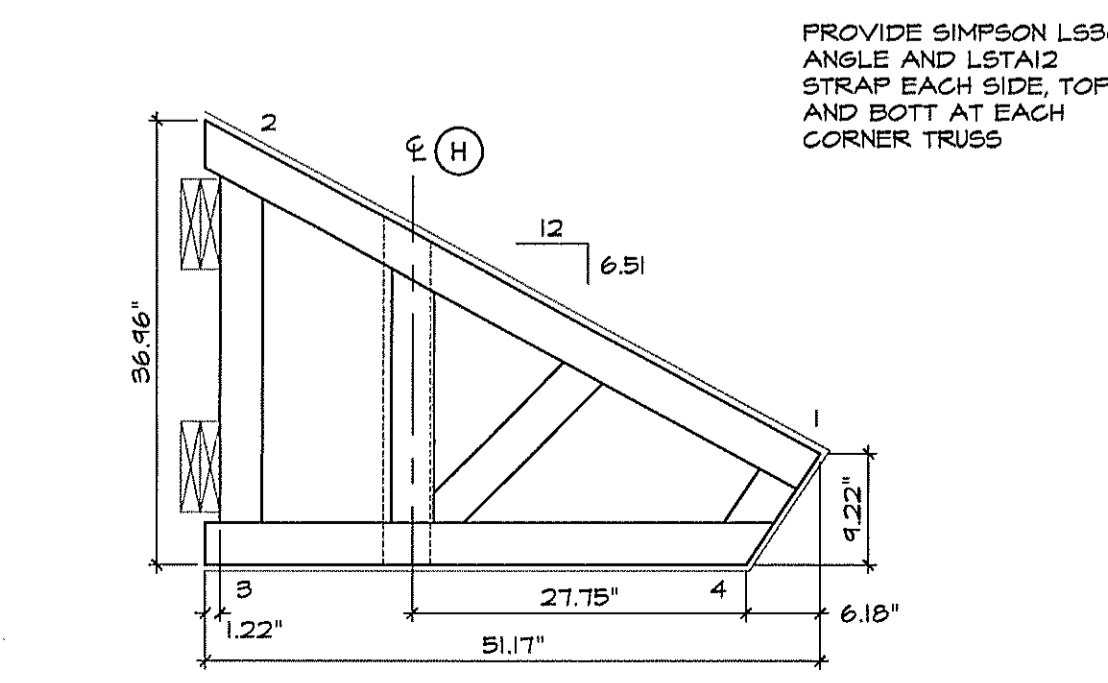
4 AWNING JOIST (C) 10 REQUIRED
SCALE: 3/4" = 1'-0"



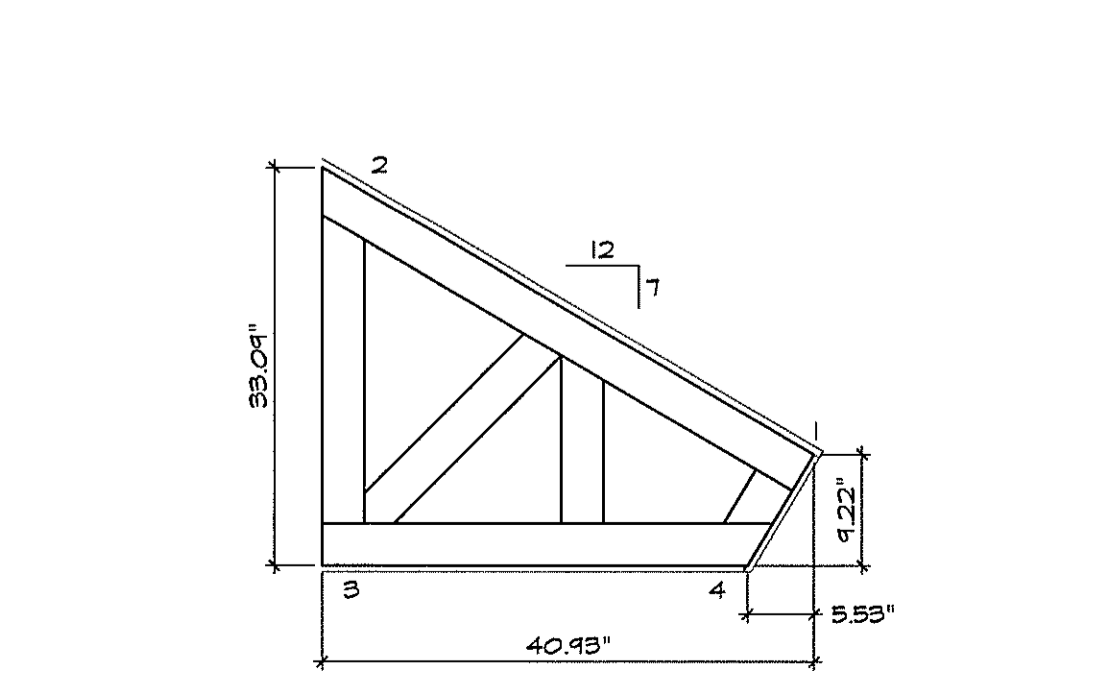
5 AWNING JOIST (D) 4 REQUIRED
SCALE: 3/4" = 1'-0"



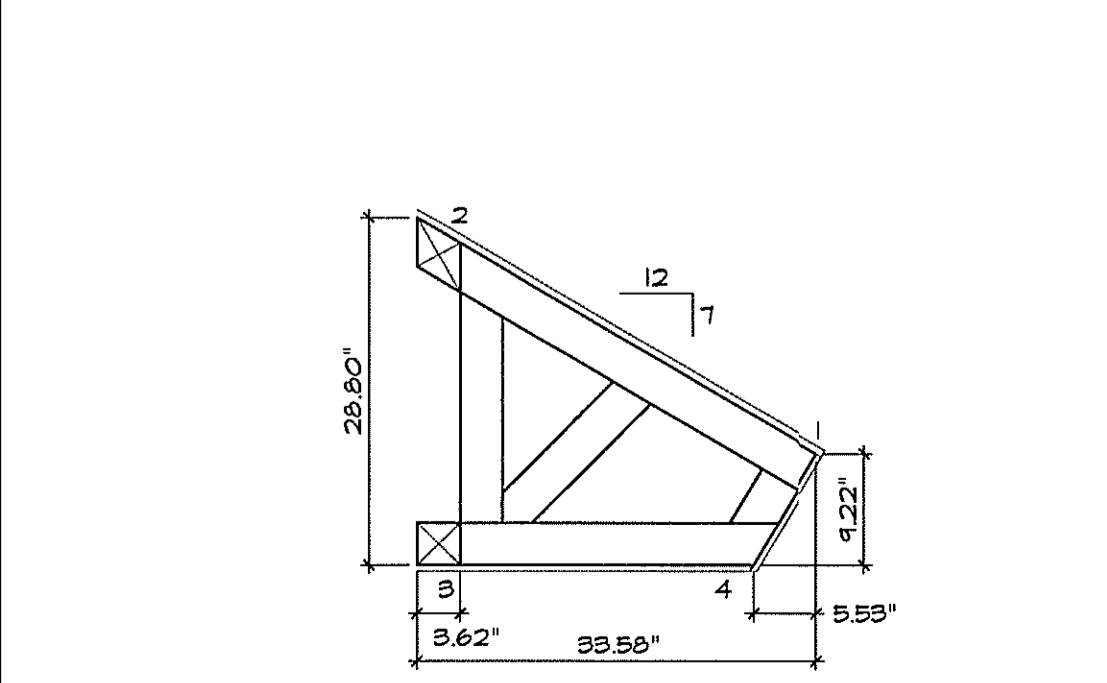
6 AWNING JOIST (E) 126 REQUIRED
SCALE: 3/4" = 1'-0"



7 AWNING JOIST (F) 2 REQUIRED
SCALE: 3/4" = 1'-0"



8 AWNING JOIST (G) 2 REQUIRED
SCALE: 3/4" = 1'-0"



9 AWNING JOIST (H) 4 REQUIRED
SCALE: 3/4" = 1'-0"



10 RESERVED
SCALE:



11 RESERVED
SCALE:

REVISIONS BY

Lindemann Bentzon Bojack
ENGINEERING DESIGN INSPECTION <<<
290 CITRUS TOWER BLVD
SUITE 200
CLERMONT, FL 34711
PHONE: (352)242-0100
FAX: (352)242-0302

Christopher M. Smith, P.E.
Florida License No. 92945
Lindemann Bentzon Bojack Engineering
Certificate No. EB-0000337
SEP 22 2003

ABC LIQUORS, INC.
8989 S. ORANGE AVE. - ORLANDO, FLA. 32809
ABC STORE NO. 197
PALM COAST, FL

AWNING TRUSS LAYOUT

DRAWN: M. MAISCO
CHECKED: S. RIVERA
DATE: 2-6-04
SCALE: AS NOTED
JOB No: 197
SHEET

S=6