

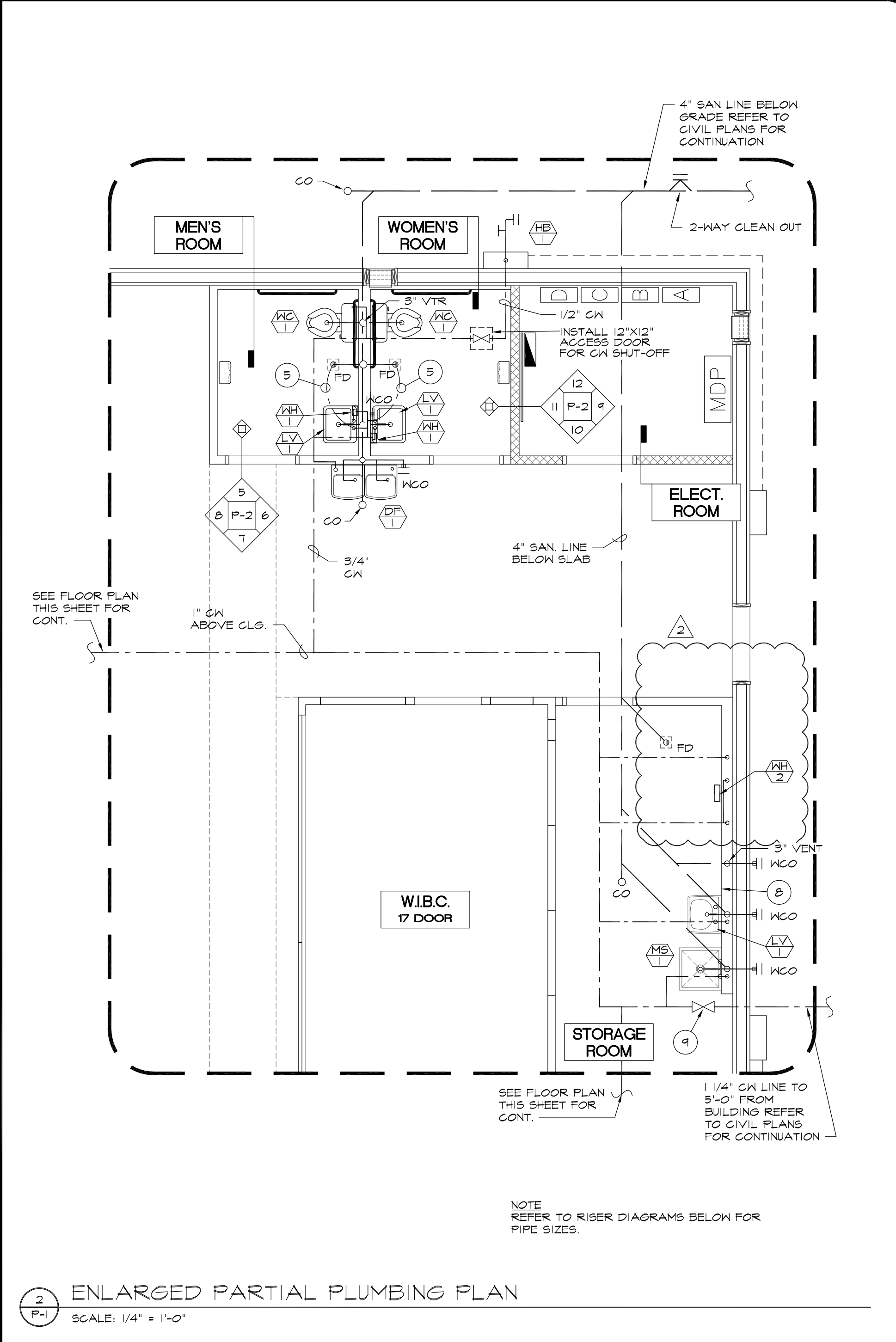
REVISIONS	BY
BUILDING DEPT REVISION 1-26-04	S.R.R.
OWNER REVISION 1-30-10	MCM

**ARTERBURY ARCHITECTS, INC.**  
 A A 26 000 7 18  
 1009 MAITLAND CENTER COMMONS BLVD  
 (SUITE 216) MAITLAND, FL 32751  
 TEL: (407) 774-2233  
 FAX: (407) 774-7377

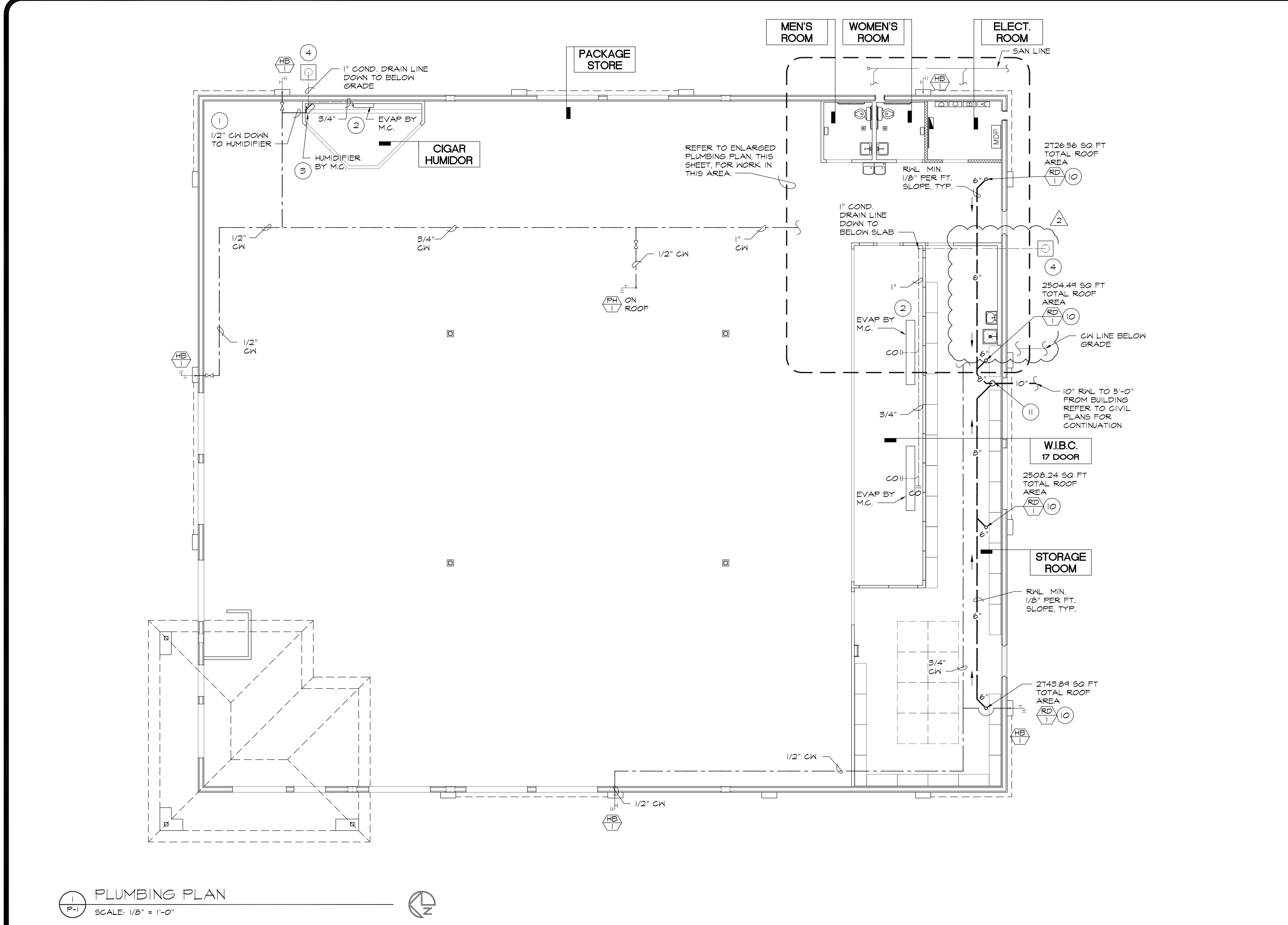
**ABC LIQUORS, INC.**  
 8988 S. ORANGE AVE. - ORLANDO, FLA. 32809  
**ABC STORE NO. 43**  
 VERO BEACH CENTURY TOWN CENTER

DRAWN: M. MAISCO  
 CHECKED: S. RIVERA  
 DATE: 5-15-04  
 SCALE: AS NOTED  
 JOB No: 43  
 SHEET

PLUMBING PLAN



**2 ENLARGED PARTIAL PLUMBING PLAN**  
 SCALE: 1/4" = 1'-0"



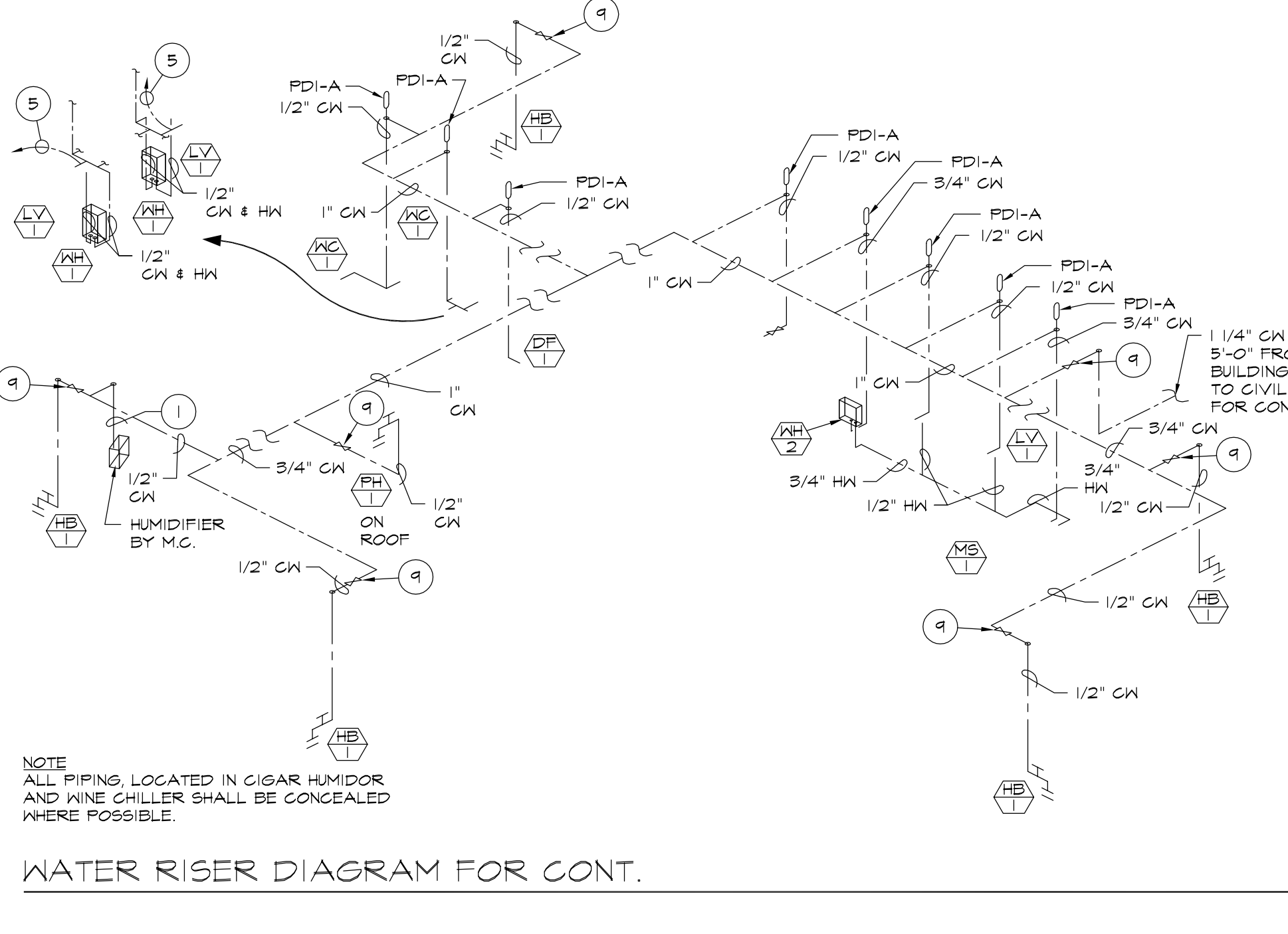
**1 PLUMBING PLAN**  
 SCALE: 1/8" = 1'-0"

- FIXTURE SCHEDULE**
- 4.G. LAVATORY, AMERICAN STANDARD MODEL NO. 0356.028 MOUNTED WITH TOP AT 54" A.F.F. PROVIDE WITH 2000.100 SELF CLOSING FAUCET, GRID STRAINER AND ANGLE ANGLE STOPS. PROVIDE TRAP INSULATION WRAP, BROCAR PRODUCTS, INC. OR EQ.
  - H/C WATER CLOSET: KOHLER MODEL K-4226 (BOWL) & K4634 (TANK), 1.6 GAL. FLUSH. PROVIDE WITH BREVIA K-4664 SEAT LESS COVER.
  - TOILET ROOM WATER HEATER: INSTANTANEOUS POINT OF USE EEMAX # SP2412, 120V, 2.4kW
  - DRINKING FOUNTAIN, BARRIER-FREE SPLIT-LEVEL WATER COOLER AS MANIF. BY OASIS, MODEL NO. P8AMSL1150 / 10
  - NOT USED
  - STORAGE ROOM WATER HEATER: INSTANTANEOUS POINT OF USE EEMAX # EX160BTC, 208V, 16.6kW
  - STAINLESS STEEL MOP SINK: AERO MODEL NO. SMT-2424-6 (24"x24"x10") PROVIDE WITH AERO MODEL NO. 5-T10 (POLISHED CHROME FINISH) EXPOSED-YOKE WALL-MOUNTED UTILITY FAUCET W/ MATTS SERIES 8 HOSE CONNECTION VACUUM BREAKER.
  - POST HYDRANT - ZURN MODEL # Z-1345 - 3/4"
  - HOSE BIBB - ZURN MODEL # Z-1350 - 3/4"
  - ROOF DRAIN: ZURN MODEL NO. Z-121 12" DIAMETER ROOF DRAIN, DURA-COATED CAST IRON BODY W/ COMBO MEMBRANE FLASHING CLAMP / GRAVEL GUARD & LOW SILHOUETTE CAST IRON DOME.
  - CONDENSATE PUMP MFG # CUESIL, 115 VOLT, ALSO AVAILABLE IN HIGH TEMP. TEMP. TANK RATED 190°F BY SPECIAL ORDER.

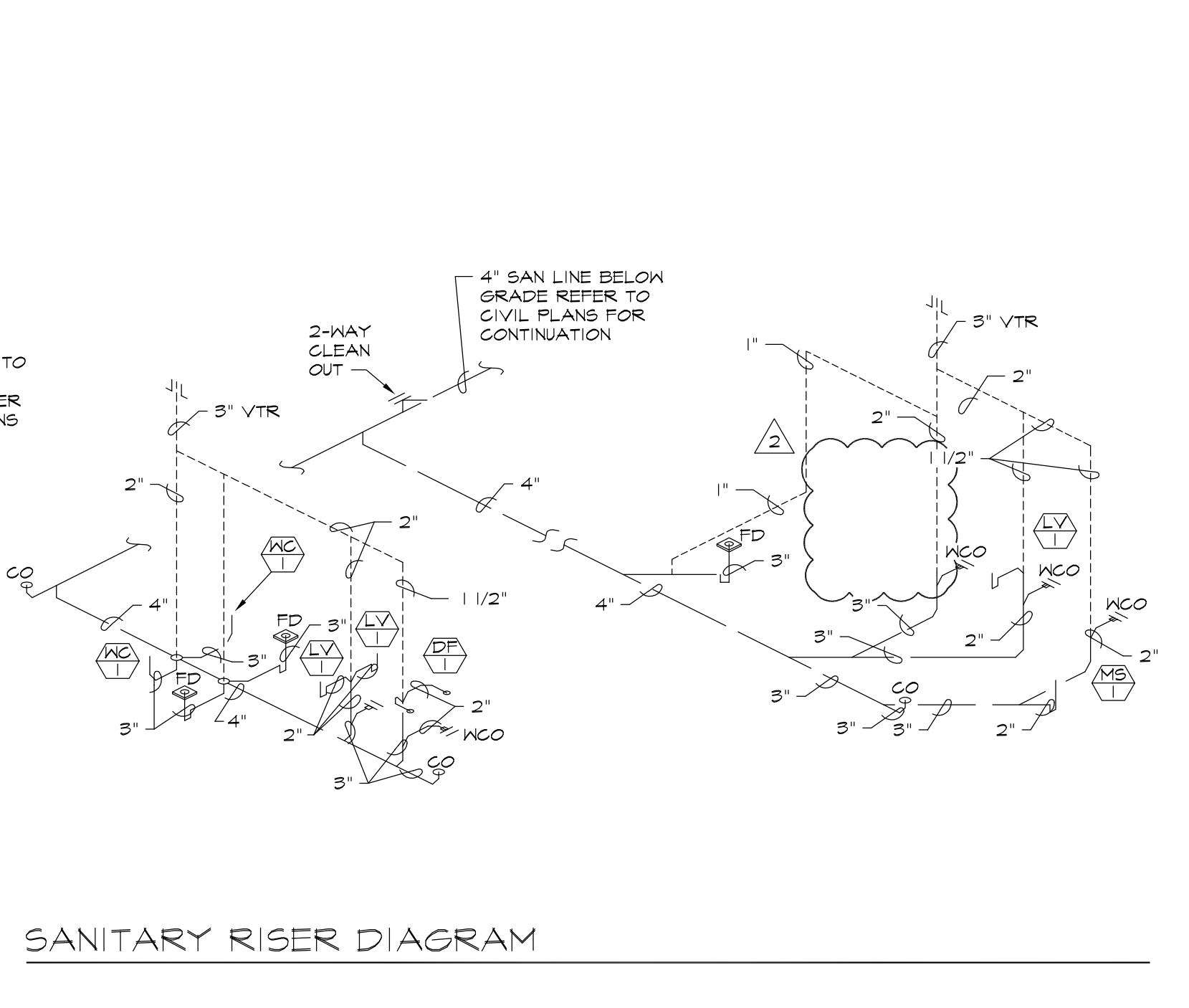
PER FPG 2001 W/2004 SUPPLMENTS (TABLE 403.1)	WATER CLOSET 1 PER 500	LAVATORY 1 PER 750	DRINKING FOUNTAIN 1 PER 1000
9269 SQ FT GFA @ 50 SQ FT PER PERSON = 302 PEOPLE	MEN	1	1
	WOMEN	1	1
			(1) H/C ACCESSIBLE

- KEY NOTES**
- 1 1/2" VALVED COLD WATER DOWN TO HUMIDIFIER
  - CONDENSATE LINE WITH CLEAN OUT AT MECHANICAL UNIT SEE PLAN FOR SIZE
  - OVERFLOW LINE SEE PLAN FOR SIZE
  - DRYWELL, REFER TO DETAIL ON SHEET P-2
  - 1/2" TRAP PRIMER
  - NOT USED
  - NOT USED
  - PROVIDE AND INSTALL SOAP DISP / PAPER TOWEL DISP. ON WALL THIS LOCATION - SEE SPECIFICATIONS ON SHEET P-2
  - EMERGENCY SHUT-OFF VALVE
  - 4" Ø RAIN WATER LEADER UP TO ROOF DRAIN ABOVE
  - 10" Ø RAIN WATER LEADER DOWN TO BELOW GRADE.

- LEGEND**
- |  |                         |
|--|-------------------------|
| — GOLD WATER LINE                                | — HB HOSE BIBB          |
| --- HOT WATER LINE                               | FD FLOOR DRAIN          |
| --- SANITARY SEWER LINE                          | CO FLOOR CLEAN-OUT      |
| --- VENT   | WCO WALL CLEAN-OUT      |
| --- RAIN WATER LEADER                            | FS FLOOR SINK           |
| ⊘ GATE VALVE                                     | FD FLOOR / FUNNEL DRAIN |
| ⊘ PDI WATER HAMMER ARRESTER SIOUX CHIEF OR EQUAL | 2-WAY CLEAN OUT         |



**WATER RISER DIAGRAM FOR CONT.**



**SANITARY RISER DIAGRAM**