

REVISIONS	BY

ARTERBURY ARCHITECTS, INC.
 A A 2600 0718
 1009 MAITLAND CENTER COMMONS BLVD
 (SUITE 216) MAITLAND, FL. 32751
 TEL: (407) 774-2233
 FAX: (407) 774-7377

Handwritten signature and date: 9-22-09

ABC LIQUORS, INC.
 8989 S. ORANGE AVE. - ORLANDO, FLA. 32809
ABC STORE NO. 43
 VERO BEACH CENTURY TOWN CENTER

DRAWN: M. MAISCO
 CHECKED: S. RIVERA
 DATE: 5-15-09
 SCALE: AS NOTED
 JOB No. 43
 SHEET

A-4

MATERIAL FINISH SCHEDULE

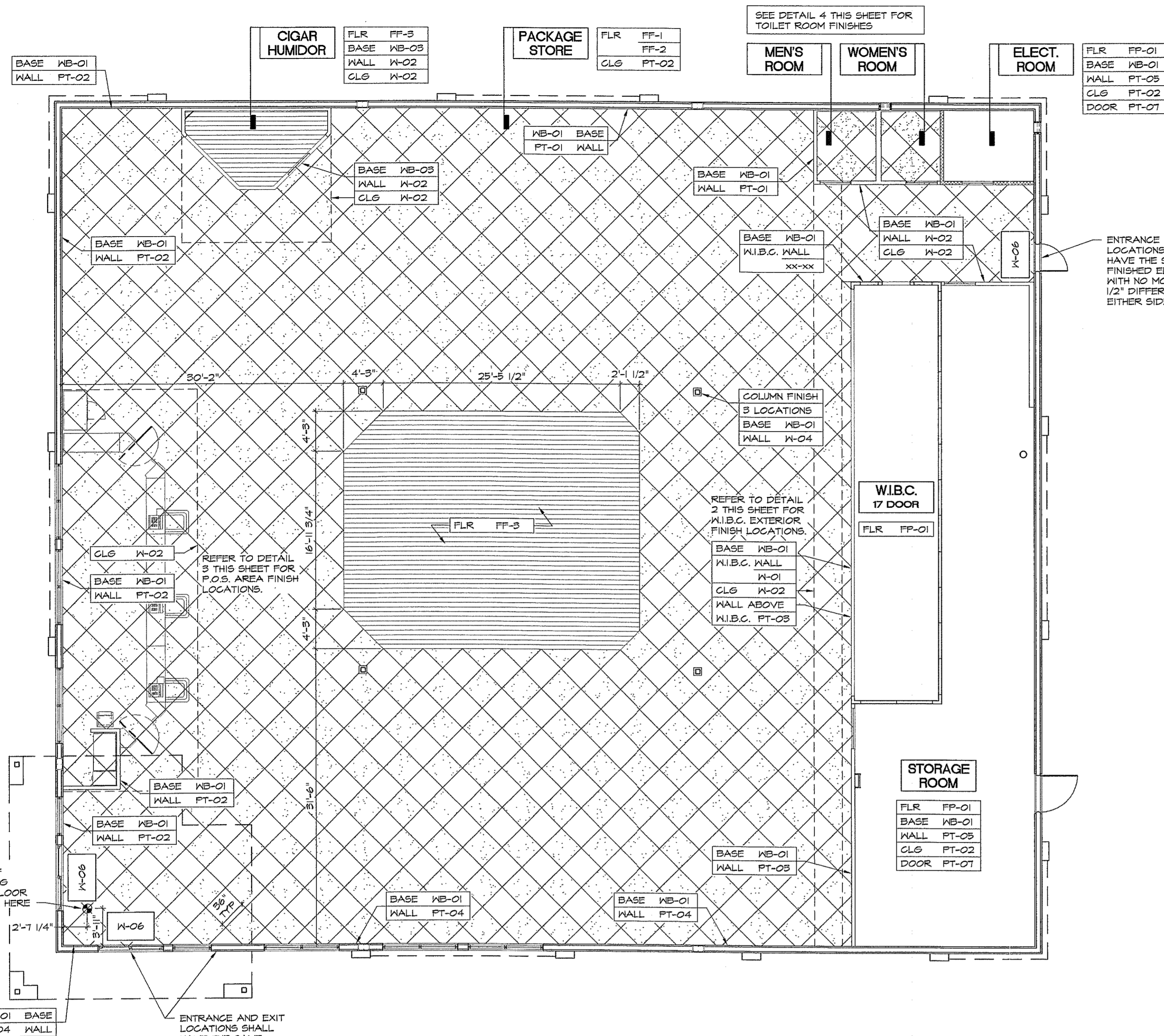
MATERIAL FINISH SCHEDULE					
FINISH	TAG	NUMBER	NAME	FINISH	MANUFACTURER
PAINT					
PT-01	SW	6713	VERDANT	SATIN	SHERWIN WILLIAMS
PT-02	SW	6363	GINGERY	SATIN	SHERWIN WILLIAMS
PT-03	SW	6365	FIRE BRICK	SATIN	SHERWIN WILLIAMS
PT-04	SW	6489	REALLY TEAL	SATIN	SHERWIN WILLIAMS
PT-05	SW	6369	TASSEL	SATIN	SHERWIN WILLIAMS
PT-06	SW	6140	MODERATE WHITE	SATIN	SHERWIN WILLIAMS
PT-07	SW	6363	GINGERY	SEMI-GLOSS	SHERWIN WILLIAMS
FLOOR PAINT					
FP-01	SILICONE ACRYLIC CONCRETE SEALER	ACRYLIC CONC. STAIN	GRAY IN APPEARANCE	FLR PAINTS, INC.	
STAIN					
ST-01	230	EARLY AMERICAN	STAIN	MINWAX	
LAMINATE					
LM-01	WF151	CROSSWALK	SUEDE	PIONITE	
WALL BASE					
WB-01	4" HIGH-TYPE TV-STYLE B (6" HIGH IN RESTROOMS)	COCOA @ 24	SUEDE (VINYL)	ARMSTRONG	
WB-02	3202	WINE BARREL	MARMOLEUM REAL BOLD	FORBO	
WB-03	SEE DETAILS 5 AND 6 ON SHEET A-3 FOR WOOD BASE INFORMATION				THOMAS LUMBER
SURFACES					
SS-01	3202	WINE BARREL	MARMOLEUM REAL BOLD	FORBO	
SS-02	K3-8490 (STUDIO COLLECTION)	COPPERMINE	SATIN 09/04	AVONITE SURFACES	
MISC. FINISHES					
W-01	13048-60	TUSCAN RED	FIRE RATED LAMINATE	WILSONART	
W-02	6" X 3/4" T&G ROUGH SAWN CEDAR				
W-03	3412	REMBRANDT PALETTE	MARMOLEUM VIVACE	FORBO	
W-04	1" X 4" RED OAK TRIM				
W-05	BRICK	OLD CHICAGO	AGED IN APPEARANCE		
W-06	#3902 (3'x5' MAT)	RUST	FLOOR MAT	WHEELER	
W-07	FRP WALL PANEL	BEIGE			
W-08	1" VINYL MOLDING	COCOA			

FLOOR FINISH SCHEDULE

HATCH	DESCRIPTION	HATCH	DESCRIPTION
	FF-1 RAIN FOREST EARTH DARK (LARGE)		FF-3 FORBO ETERNAL WOOD 12662 MERBAU CONTACT: JEAN PENDLEY (352) 874-1521 JEAN.PENDLEY@FORBO.COM
	FF-2 RAINFOREST EARTH LIGHT (LARGE)		

FINISH NOTES:

- WHERE CHANGES IN LEVEL EXCEEDS 1/4" BUT NO MORE THAN 1/2", EDGE SHALL BE BEVELED WITH A SLOPE NO GREATER THAN 1:2. TYP. ENTRANCE AND EXIT LOCATIONS SHALL HAVE THE SAME FINISHED ELEVATION WITH NO MORE THAN 1/2" DIFFERENCE ON EITHER SIDE.
- ALL INT. FINISHES AT EXIT & EXIT ACCESS AREAS SHALL BE OF CLASS "B" & HAVE A FLAME-SPREAD RATING 26-75 & SMOKE DEVELOPED RATINGS 0-454.
- ALL OTHER SPACES SHALL BE OF CLASS "C" & HAVE FLAME-SPREAD RATINGS OF 76-200 & SMOKE DEVELOPED RATINGS 0-450.
- ALL EXPOSED SURFACES TO RECEIVE 1/2" GYP. BOARD, EXCEPT FOR STOCK ROOM WALLS.
- ALL JOINERY TO BE TIGHT MITERED.
- SCREWS MUST BE USED TO ATTACH ALL DRYWALL, REGARDLESS OF WOOD OR METAL FRAMING.



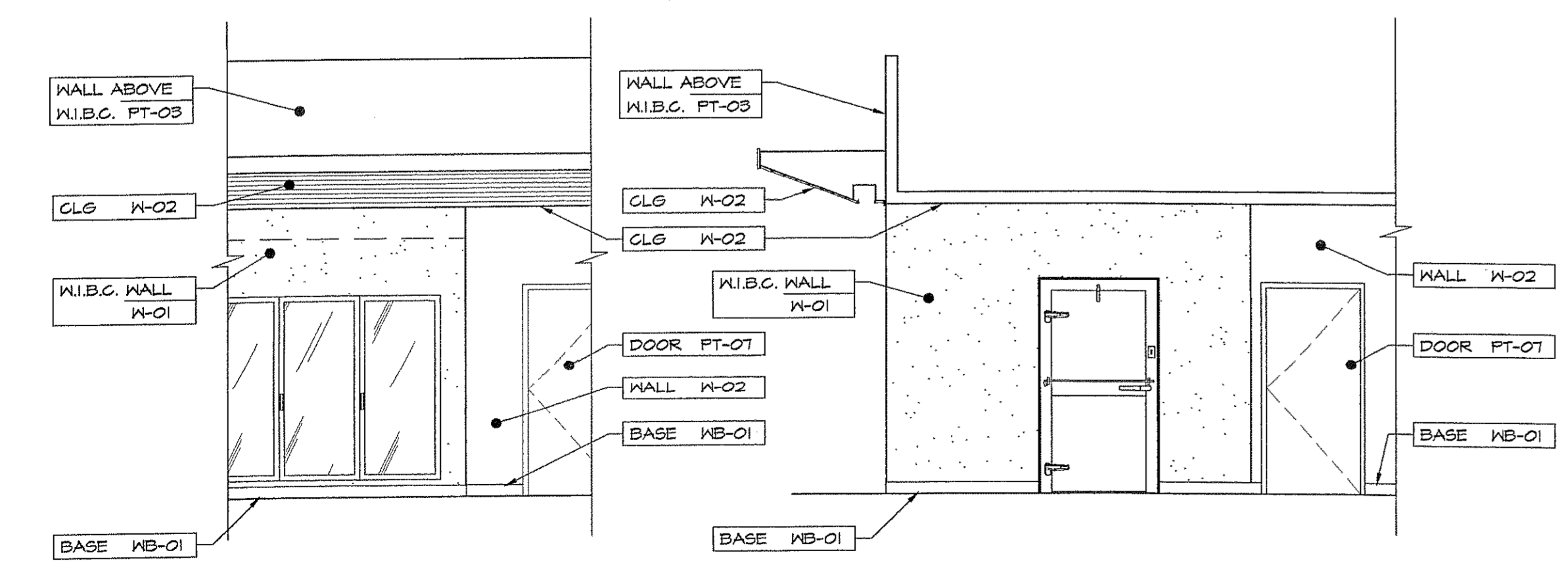
ENTRANCE AND EXIT LOCATIONS SHALL HAVE THE SAME FINISHED ELEVATION WITH NO MORE THAN 1/2" DIFFERENCE ON EITHER SIDE.

REFER TO DETAIL 2 THIS SHEET FOR W.B.C. EXTERIOR FINISH LOCATIONS.

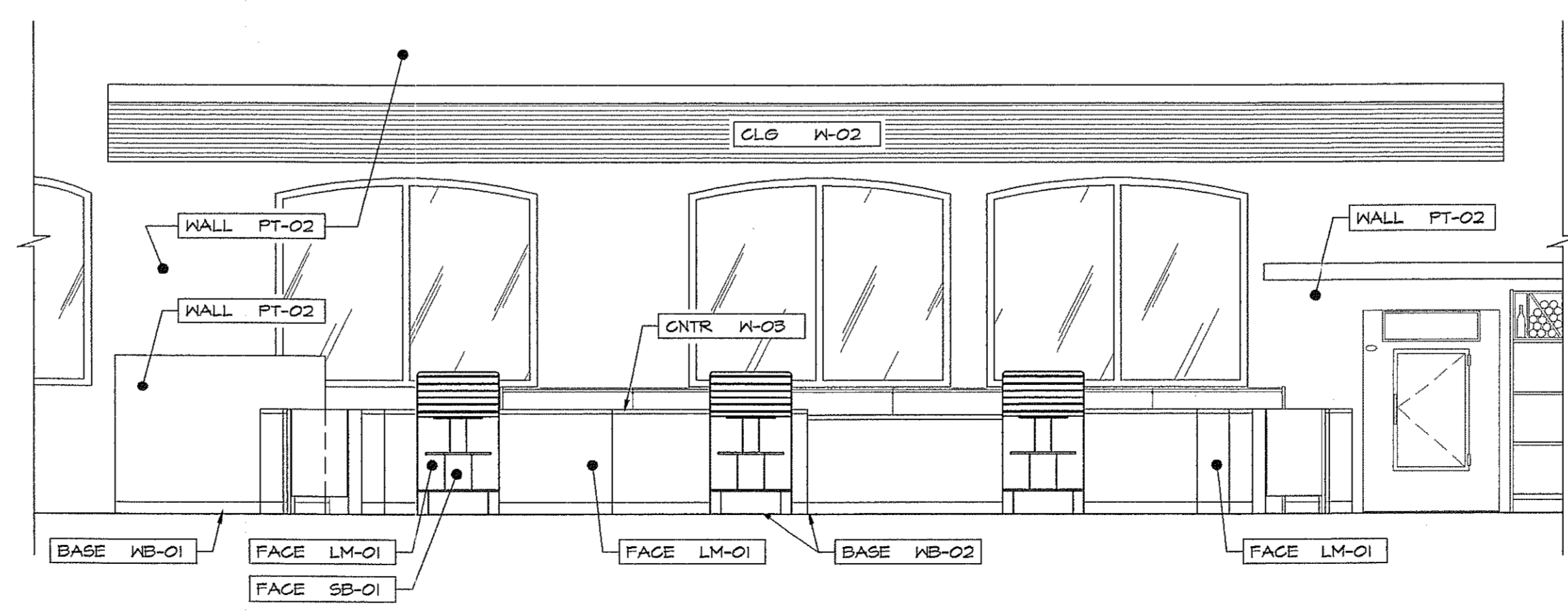
REFER TO DETAIL 3 THIS SHEET FOR F.O.S. AREA FINISH LOCATIONS.

POINT OF BEGINNING START FLOOR PATTERN HERE

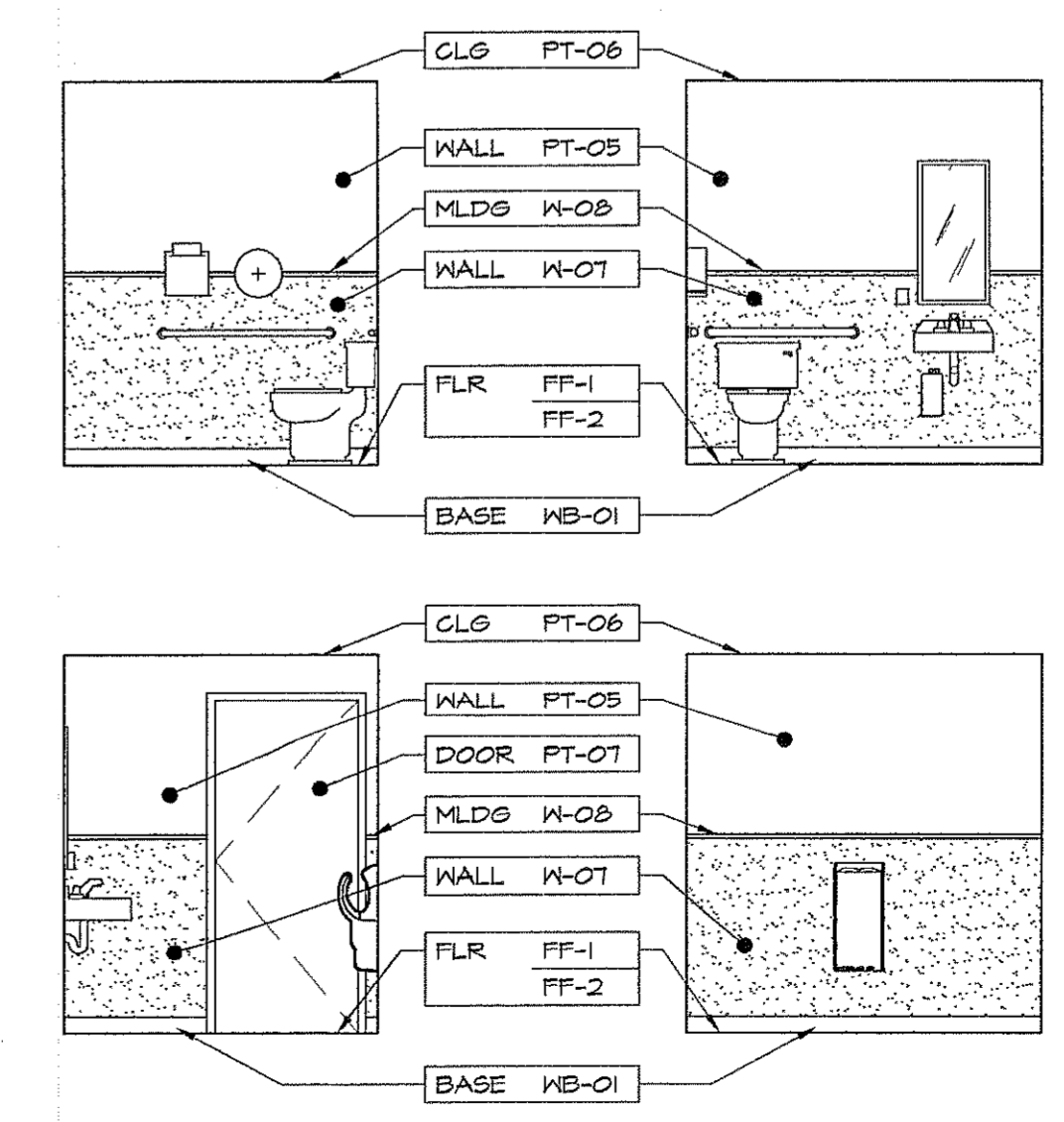
1 FINISH PLAN
 SCALE: 1/8" = 1'-0"



2 ELEVATION
 SCALE: 1/4" = 1'-0"



3 ELEVATION
 SCALE: 1/4" = 1'-0"



4 ELEVATION
 SCALE: 1/4" = 1'-0"

FINISH PLAN