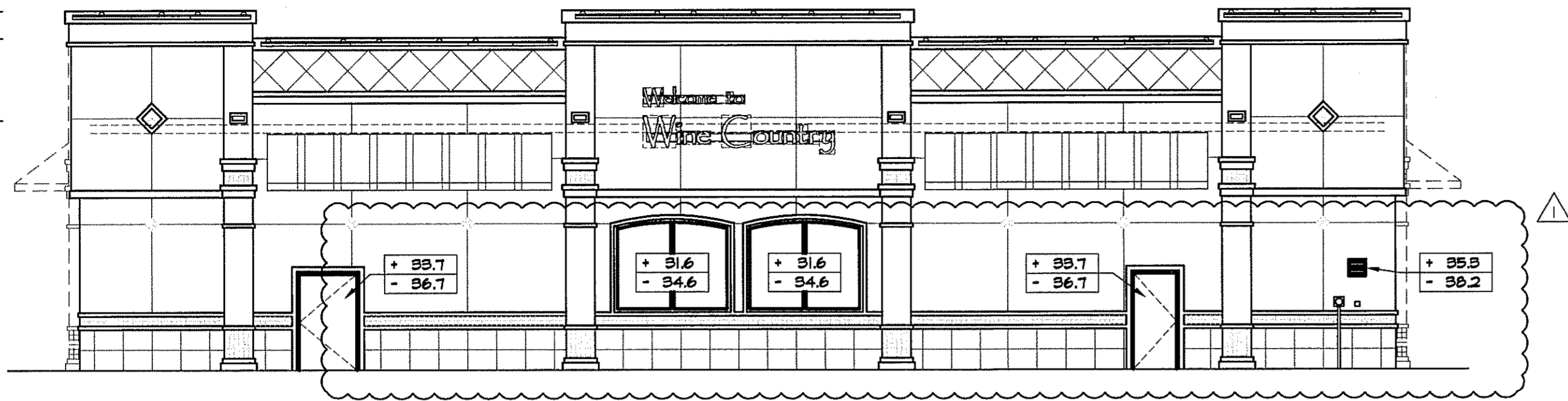


- 1 ELEV. ± 21'-3" TOP OF FRAMING
- 2 ELEV. 24'-10 1/2" TOP OF TOWER
- 3 ELEV. 23'-0" TOP OF ICF WALL
- 4 ELEV. ± 17'-4" CENTER OF SIGN
- 5 ELEV. 12'-6" BOT OF CANOPY
- 6 ELEV. 12'-0" BOT OF SOFFIT
- 7 ELEV. 10'-6" TOP OF WINDOW
- 8 ELEV. 4'-0" BOT OF WINDOW
- 9 ELEV. 0'-0" FINISHED FLOOR

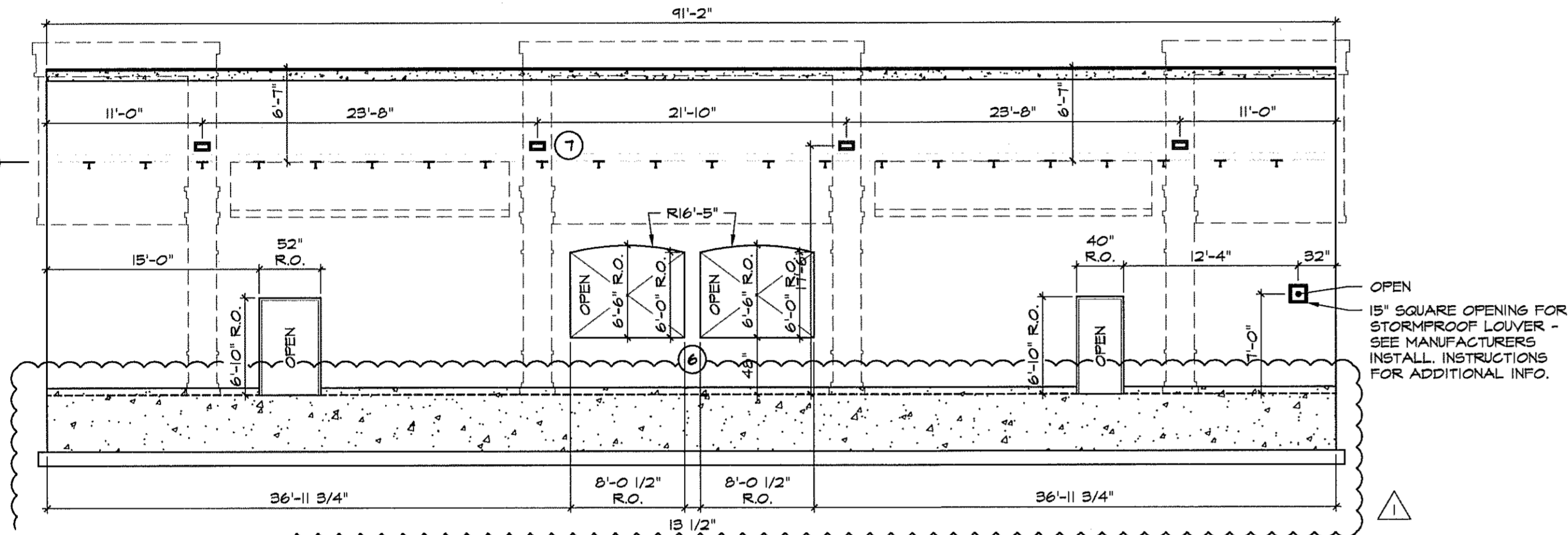


1 SOUTH ARCHITECTURAL ELEVATION  
SCALE: 1/8" = 1'-0"

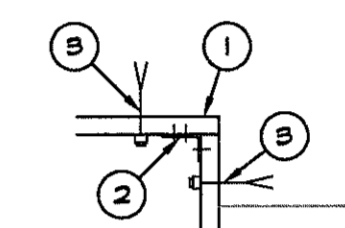
+ POS  
- NEG  
DENOTES DESIGN WIND PRESSURES IN PSF

NOTE:  
ARCH. ELEV. SHOWN FOR REFERENCE  
ONLY REFER TO ARCH. ELEVATIONS FOR  
DETAILS & FINISHES.

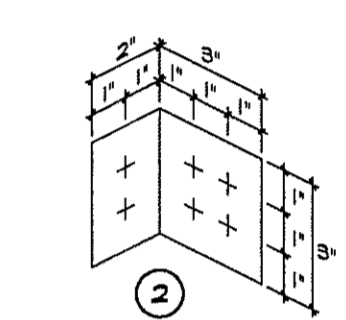
- 1 ELEV. 23'-0" TOP OF ICF WALL
- 2 JOIST BEARING  
ELEV - 16'-5"
- 3 ELEV. 4'-0" BOT OF WINDOW
- 4 ELEV. 0'-0" FINISHED FLOOR



2 SOUTH STRUCTURAL ELEVATION  
SCALE: 1/8" = 1'-0"



LOUVER OPENING



5 FRAMING AT LOUVER  
SCALE: 3/4" = 1'-0"

- 1 ELEV. ± 21'-3" TOP OF FRAMING
- 2 ELEV. 24'-10 1/2" TOP OF TOWER
- 3 ELEV. 23'-0" TOP OF ICF WALL
- 4 ELEV. ± 17'-4" CENTER OF SIGN
- 5 ELEV. 12'-6" BOT OF CANOPY
- 6 ELEV. 12'-0" BOT OF SOFFIT
- 7 ELEV. 4'-0" BOT OF WINDOW
- 8 ELEV. 0'-0" FINISHED FLOOR

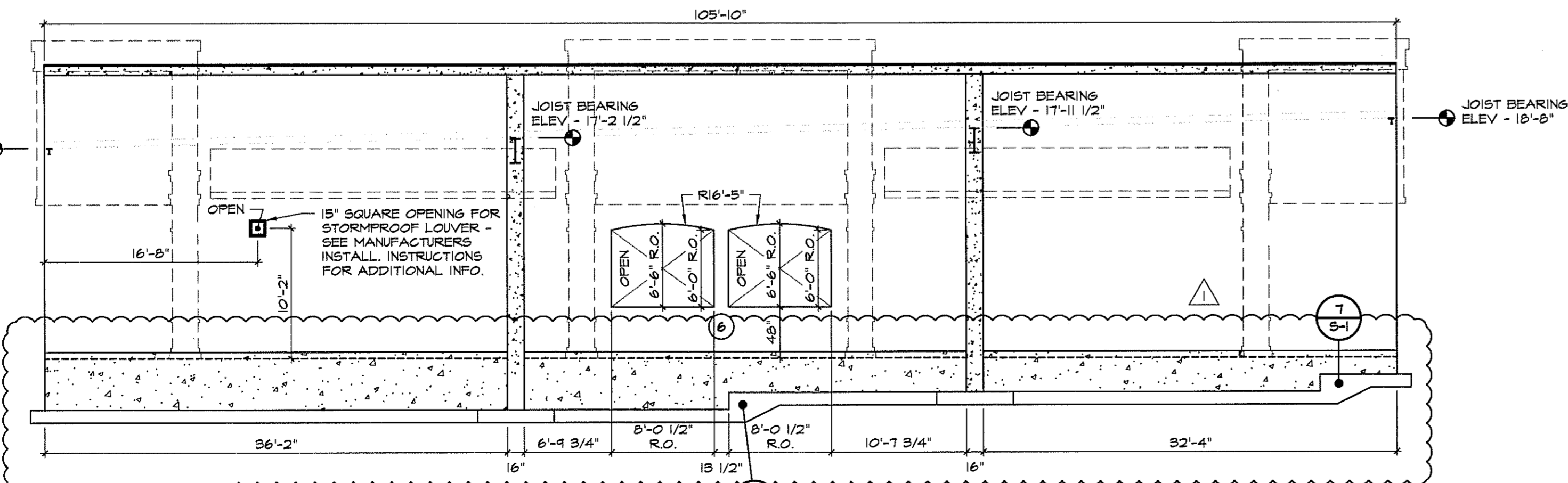


3 EAST ARCHITECTURAL ELEVATION  
SCALE: 1/8" = 1'-0"

+ POS  
- NEG  
DENOTES DESIGN WIND PRESSURES IN PSF

NOTE:  
ARCH. ELEV. SHOWN FOR REFERENCE  
ONLY REFER TO ARCH. ELEVATIONS FOR  
DETAILS & FINISHES.

- 1 ELEV. 23'-0" TOP OF ICF WALL
- 2 JOIST BEARING  
ELEV - 16'-5"
- 3 ELEV. 4'-0" BOT OF WINDOW
- 4 ELEV. 0'-0" FINISHED FLOOR



4 EAST STRUCTURAL ELEVATION  
SCALE: 1/8" = 1'-0"

6 RESERVED  
SCALE:

7 RESERVED  
SCALE:

KEY NOTES

- 1 WALL OPENING FRAMING - ALL LUMBER TO BE 2x10 P.T. S.Y.P. #2 OR BETTER
- 2 16 GA. CLIP ANGLE
- 3 EXPANSION ANCHORS 3/4"Ø x 6" LONG SPACED AT MAX 4" FROM ENDS AND 16" O.C.
- 4 4" x 10" OPENING FOR RAIN WATER SCUPPERS, TYP. 4 LOCATIONS - SEE SHEET A-6 (ROOF PLAN) FOR ADDITIONAL INFORMATION.
- 5 12 3/4" SQUARE OPENING FOR STORMPROOF LOUVER - SEE EXTERIOR ELEVATIONS FOR ADD. INFO.
- 6 STOREFRONT WINDOW AND AUTO DOOR ROUGH OPENINGS TO BE FORMED AS SHOWN. FORMS ARE TO BE REMOVED TO ALLOW FOR DIRECT ATTACHMENT OF STOREFRONT SYSTEM TO CONCRETE.
- 7 4" x 10" OPENING FOR RAIN WATER SCUPPERS, TYP. 4 LOCATIONS - SEE SHEET A-6 (ROOF PLAN) FOR ADDITIONAL INFORMATION.

REVISIONS		BY
1	BUILDING DEPT REVISION 1-26-10	MCM

**Lindemann Bentzon Bojack**  
290 CITRUS TOWER BLVD. SUITE 200 CLEMONT, FLORIDA 34711  
PHONE: (352) 242-0100 FAX: (352) 242-0302

FLORIDA LICENSE NO. EB-030637  
JAN 28 2010

DESIGN INSPECTION <<

**ABC LIQUORS, INC.**  
8889 S. ORANGE AVE. - ORLANDO, FLA. 32809  
ABC STORE NO. 43  
VERO BEACH CENTURY TOWN CENTER

STRUCTURAL ELEVATIONS

DRAWN: M. MAISCO  
CHECKED: S. RIVERA  
DATE: 5-15-04  
SCALE: AS NOTED  
JOB No. 43  
SHEET

S-4