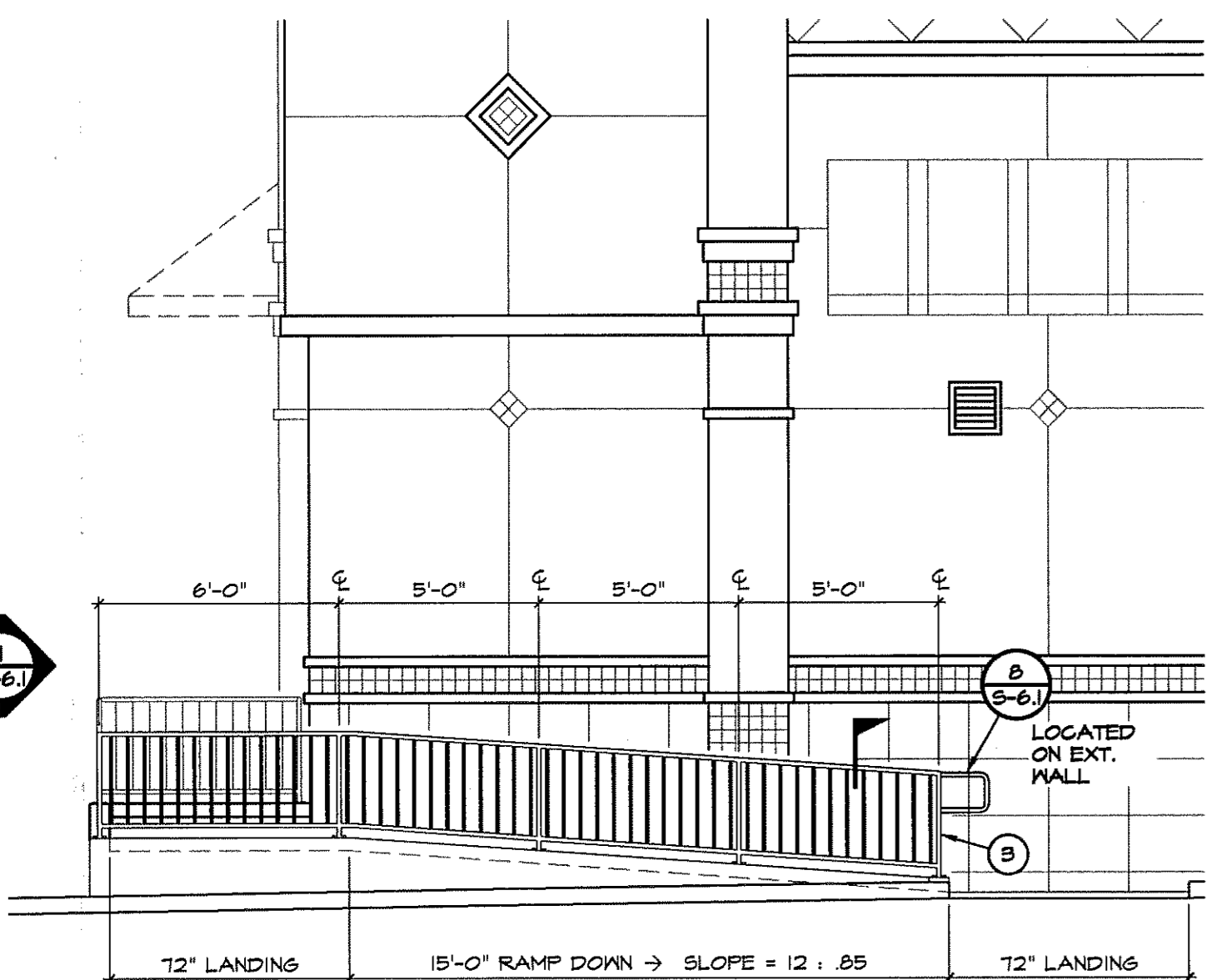
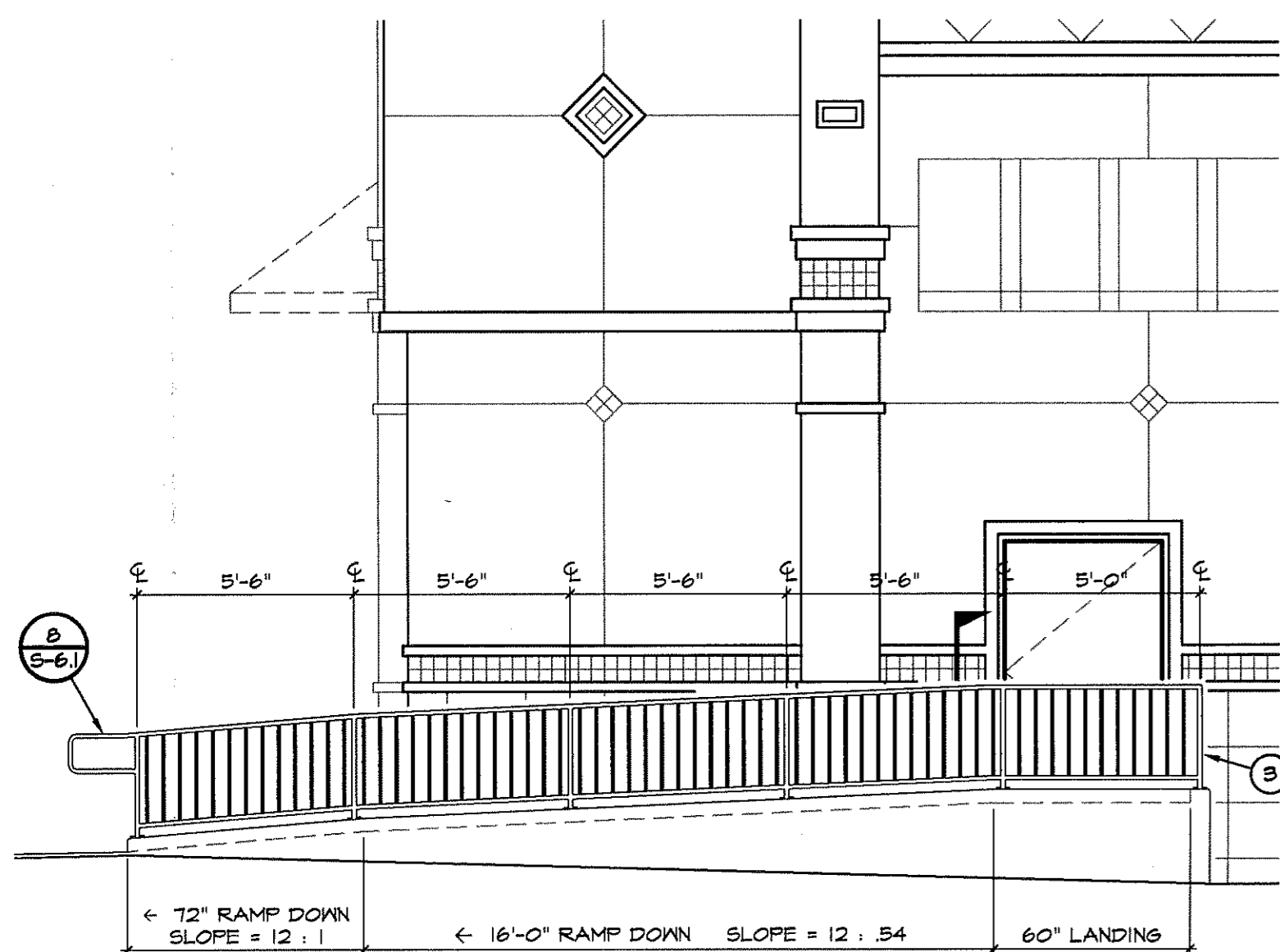


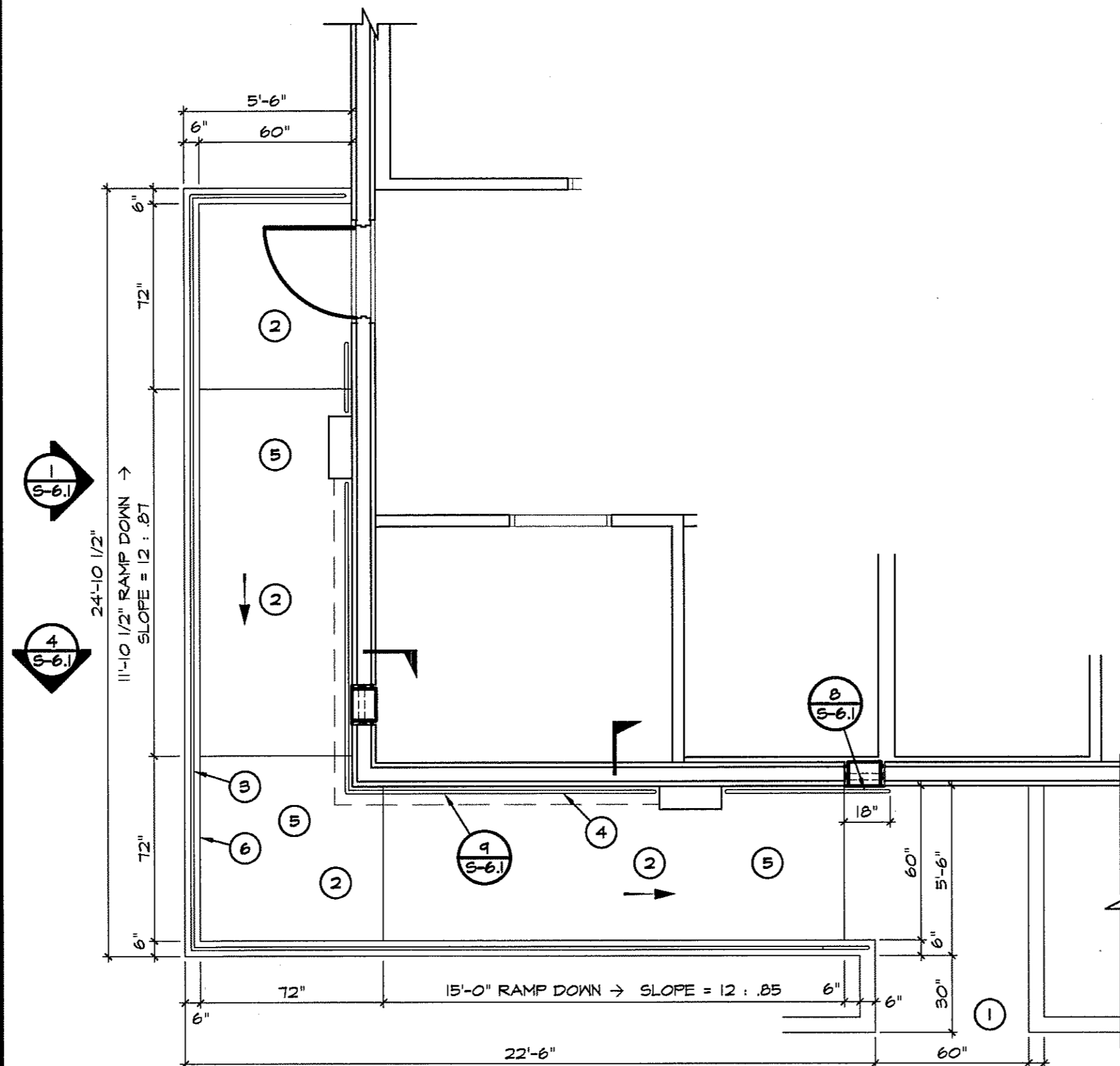
1 SOUTH RAMP ELEVATION  
SCALE: 1/4" = 1'-0"



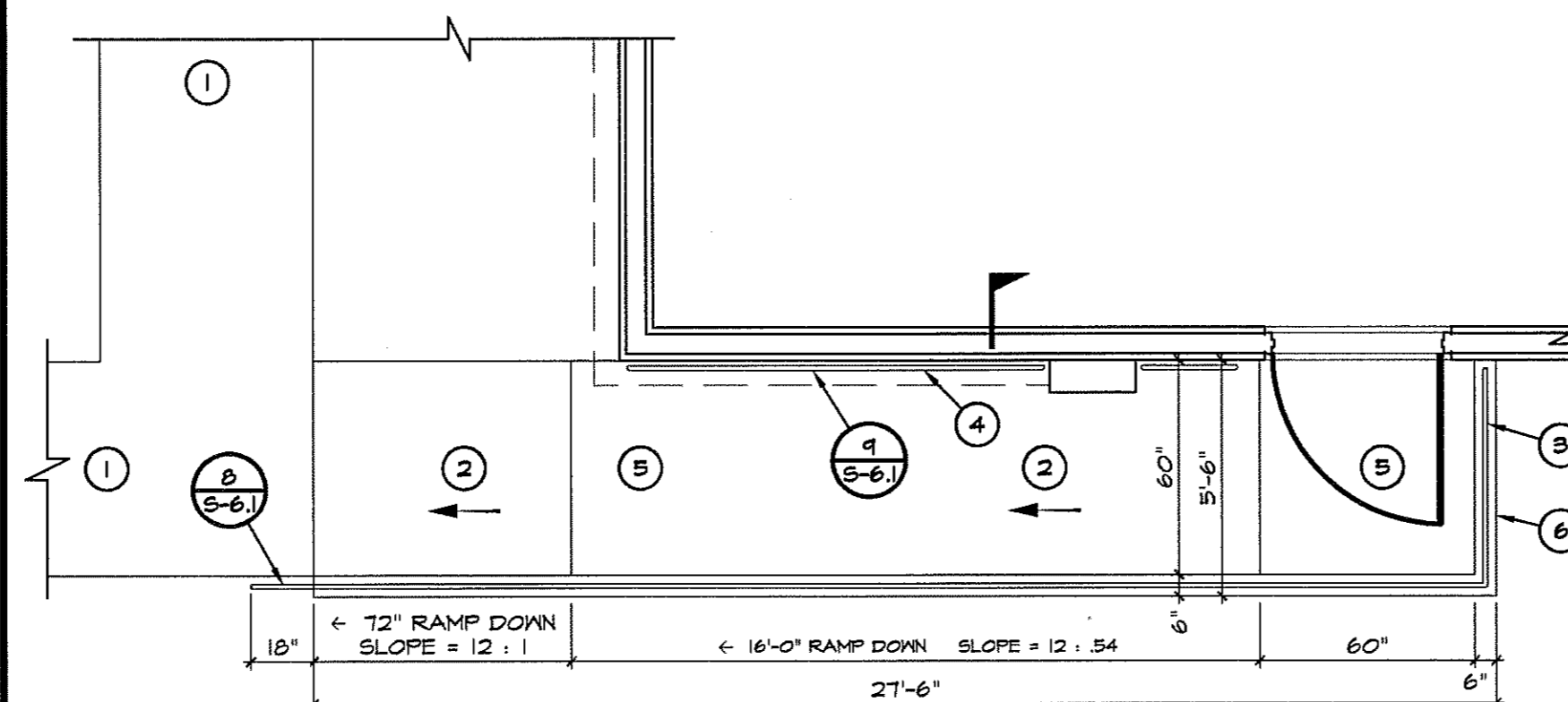
2 EAST RAMP ELEVATION  
SCALE: 1/4" = 1'-0"



6 SOUTHWEST RAMP ELEVATION  
SCALE: 1/4" = 1'-0"



3 EAST RAMP PLAN  
SCALE: 1/4" = 1'-0"



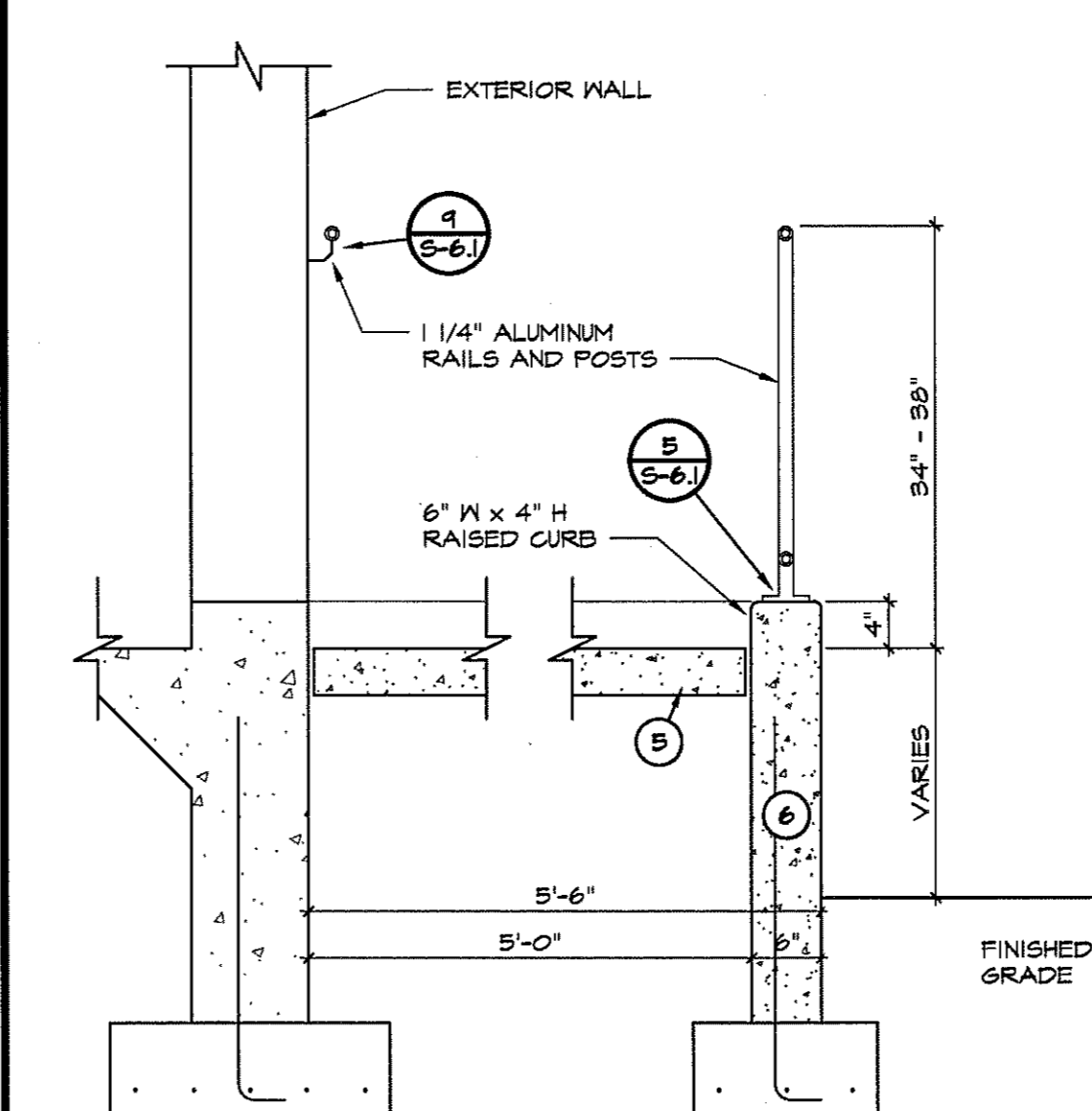
7 SOUTHWEST RAMP PLAN  
SCALE: 1/4" = 1'-0"

RAMP AND HANDRAIL KEY NOTES

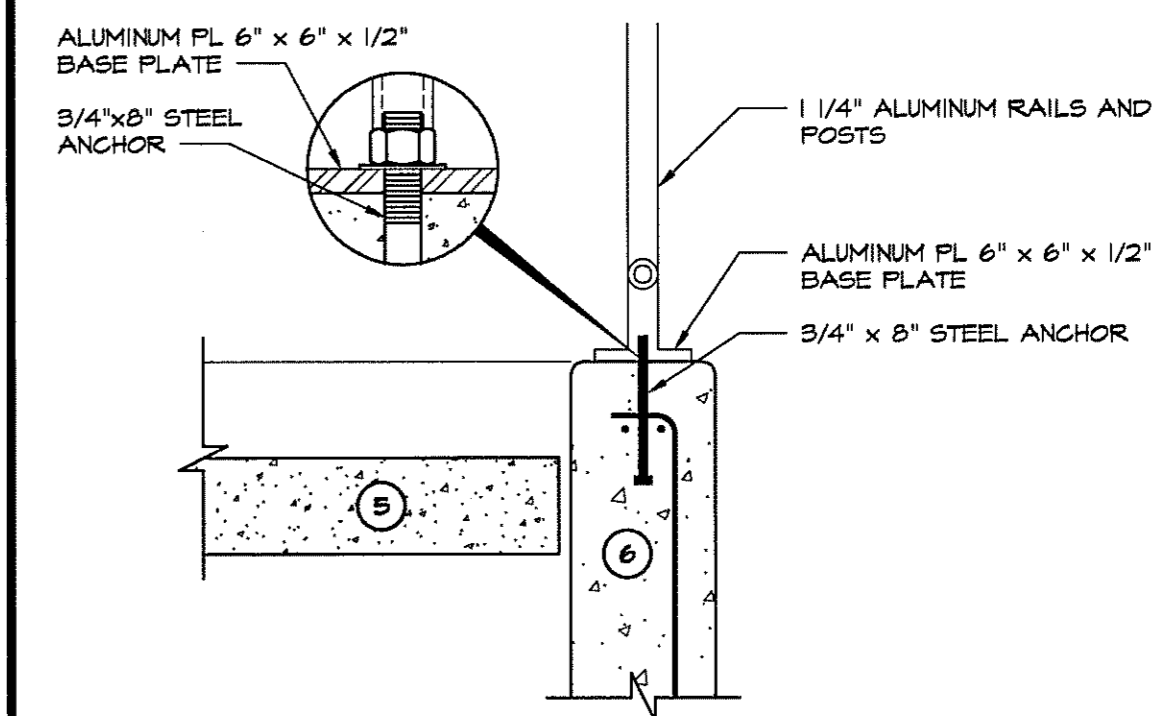
- 1 REFER TO CIVIL PLANS FOR ADDITIONAL INFORMATION.
- 2 RAMP SLOPE NOT TO EXCEED 12 : 1 - CROSS SLOPE TO BE 12 : 24. TRANSVERSE BROOM FINISH REQUIRED AT RAMP AND LANDINGS
- 3 PROVIDE AND INSTALL 1 1/4" H/C APPROVED HANDRAIL. PICKETS SHALL BE LOCATED NO GREATER THAN 5" O.C. TO NOT ALLOW A 4" SPHERE TO PASS THROUGH
- 4 PROVIDE AND INSTALL 1 1/4" H/C APPROVED HANDRAIL AT EXTERIOR WALL
- 5 4" CONCRETE SLAB 2500 P.S.I. MIN WIRE MESH W/ 6x6, 10/10 W.U.M. 6" STABILIZED SUBGRADE COMPACTED TO 98% W/ MIN 20 L.B.R.
- 6 6" CONCRETE WALL W/ #5 @ 12" O.C. VERT AND #4 @ 32" O.C. HORIZ

RAMP AND HANDRAIL GENERAL NOTES

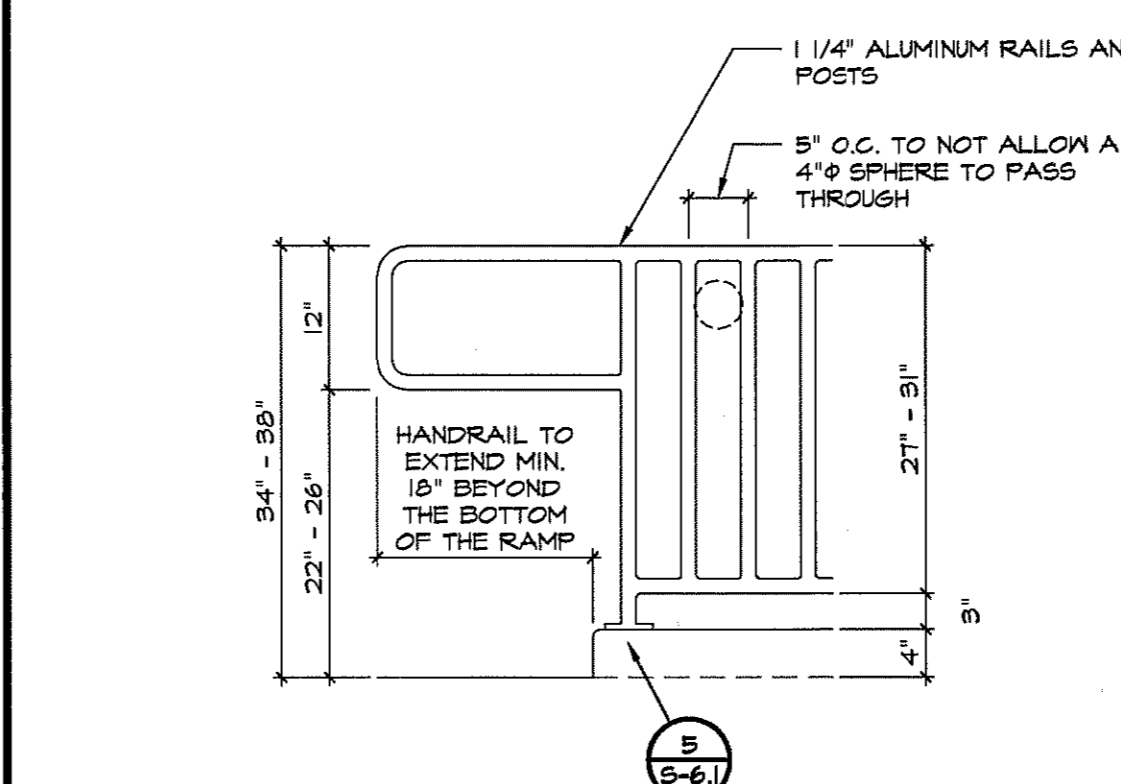
1. ALL DIMENSIONS SHALL BE FIELD VERIFIED PRIOR TO ANY FABRICATION.
2. RAMP TO MEET CURRENT FLORIDA ACCESSIBILITY AND NFPA 101 CHAPTER 7 REQUIREMENTS
3. ALL FIXED JOINTS TO BE EITHER WELDED ALL AROUND AND GROUND SMOOTH, OR, COMMERCIALLY DESIGNED FIXED JOINT SYSTEMS (SOLDERED, BRAZED, FUSED, BONDED OR SHRINK FITTED) SPECIFIED ON THE PLANS OR APPROVED BY THE ENGINEER. MECHANICAL JOINTS OTHER THAN EXPANSION JOINTS ARE NOT PERMITTED UNLESS SPECIFIED ON THE PLANS OR APPROVED IN WRITING BY THE ENGINEER. POSTS SHALL BE CONNECTED TO BASE BY WELD ONLY. WELD FILLER TO BE ALLOY ER9556, ER9556 OR ER9563.
4. ANCHOR BOLTS SHALL BE IN ACCORDANCE WITH ASTM A36 OR A307. NUTS, WASHERS, AND BOLTS TO BE HOT DIP GALVANIZED IN CONFORMANCE WITH ASTM A153. AFTER THE NUTS HAVE BEEN TIGHTENED, THE ANCHOR BOLT THREADS SHALL BE DISTORTED OR THE NUTS AND BOLTS SPOT WELDED AND COATED WITH ZINC COMPOUND.
5. ALUMINUM HANDRAIL SHALL BE CONSTRUCTED IN ACCORDANCE WITH SECTION 515 OF THE STANDARD SPECIFICATIONS. PAYMENT SHALL BE FULL COMPENSATION FOR FURNISHING AND INSTALLING HANDRAIL, INCLUDING MOUNTING HARDWARE, AND SHALL BE PAID FOR UNDER THE CONTRACT UNIT PRICE FOR PIPE HANDRAIL (ALUMINUM), L.F.



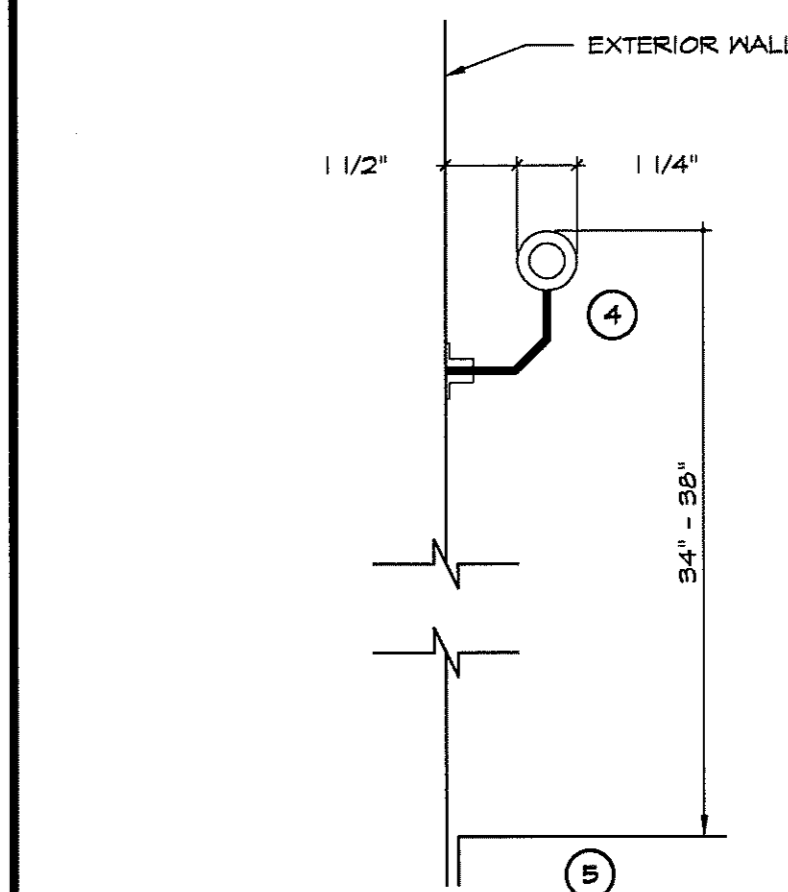
4 RAMP / HANDRAIL SECTION  
SCALE: 3/4" = 1'-0"



5 SECTION AT POST  
SCALE: 1/2" = 1'-0"



8 HANDRAIL EXTENSION DETAIL  
SCALE: 3/4" = 1'-0"



9 HANDRAIL DETAIL  
SCALE: 5/8" = 1'-0"

| REVISIONS                        | BY  |
|----------------------------------|-----|
| FIRE DEPARTMENT REVISION 1-26-10 | MCM |
|                                  |     |
|                                  |     |
|                                  |     |
|                                  |     |

Lindemann  
Bentzon  
Bojack  
ENGINEERING DESIGN INSPECTION <<

290 CITRUS TOWER BLVD.  
SUITE 200  
CLERMONT, FLORIDA 34711  
PHONE: (352) 242-0100  
FAX: (352) 242-0302

ABC LIQUORS, INC.  
8989 S. ORANGE AVE. - ORLANDO, FLA. 32809  
ABC STORE NO. 43  
VERO BEACH CENTURY TOWN CENTER

|          |           |
|----------|-----------|
| DRAWN:   | M. MAISCO |
| CHECKED: | S. RIVERA |
| DATE:    | 5-15-04   |
| SCALE:   | AS NOTED  |
| JOB No.  | 43        |
| SHEET    |           |

RAMP DETAILS

S=6