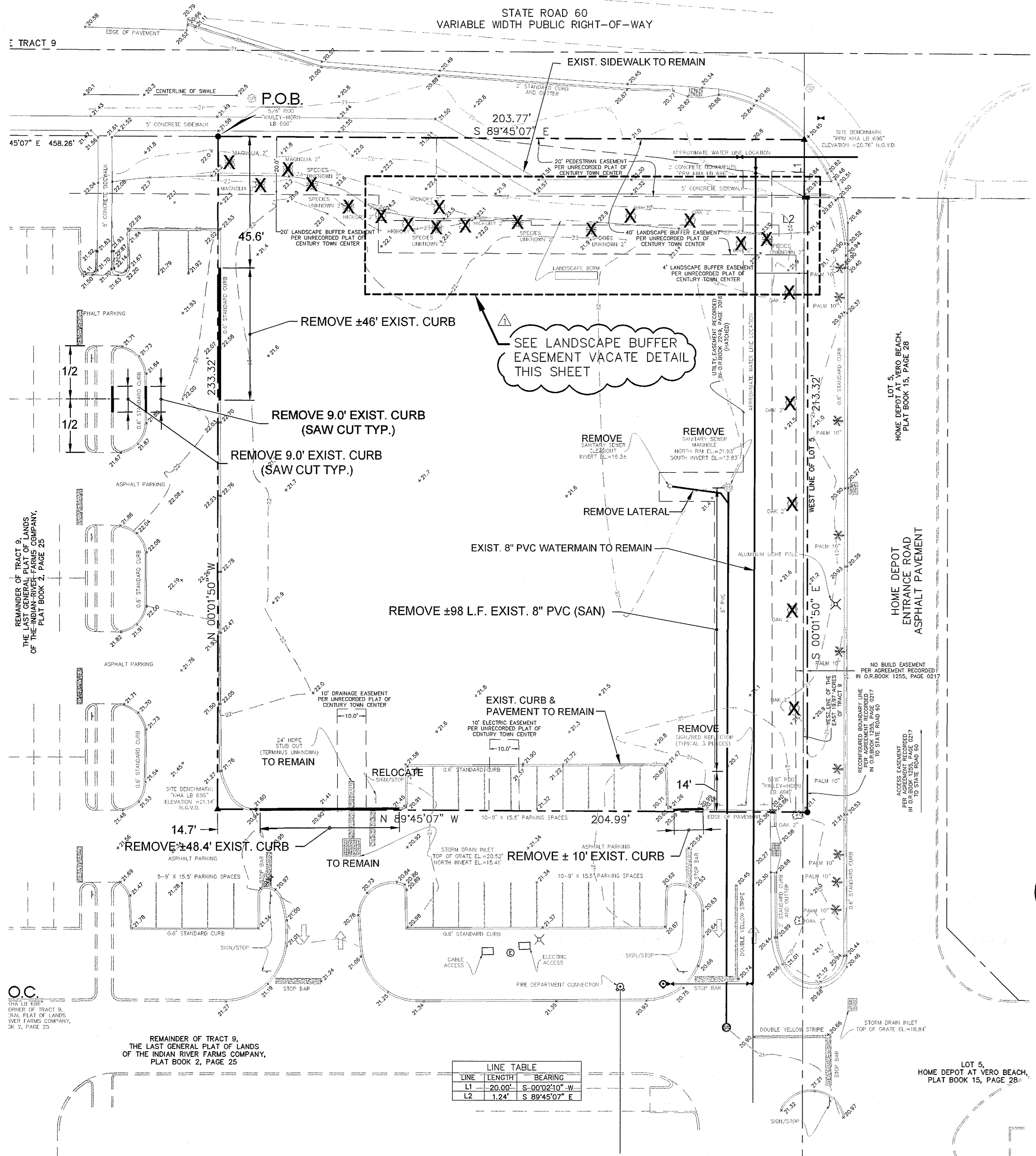
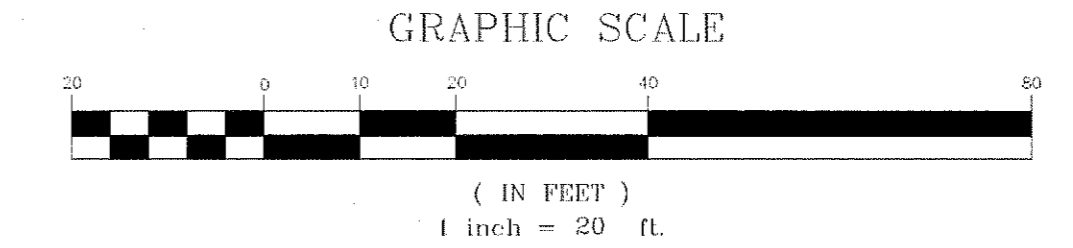
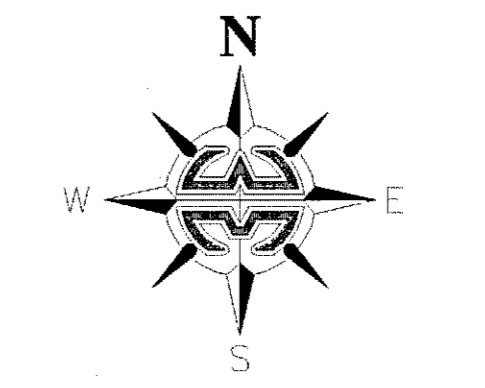


REVISIONS	BY
△ I.R.C. COMMENTS	CKS

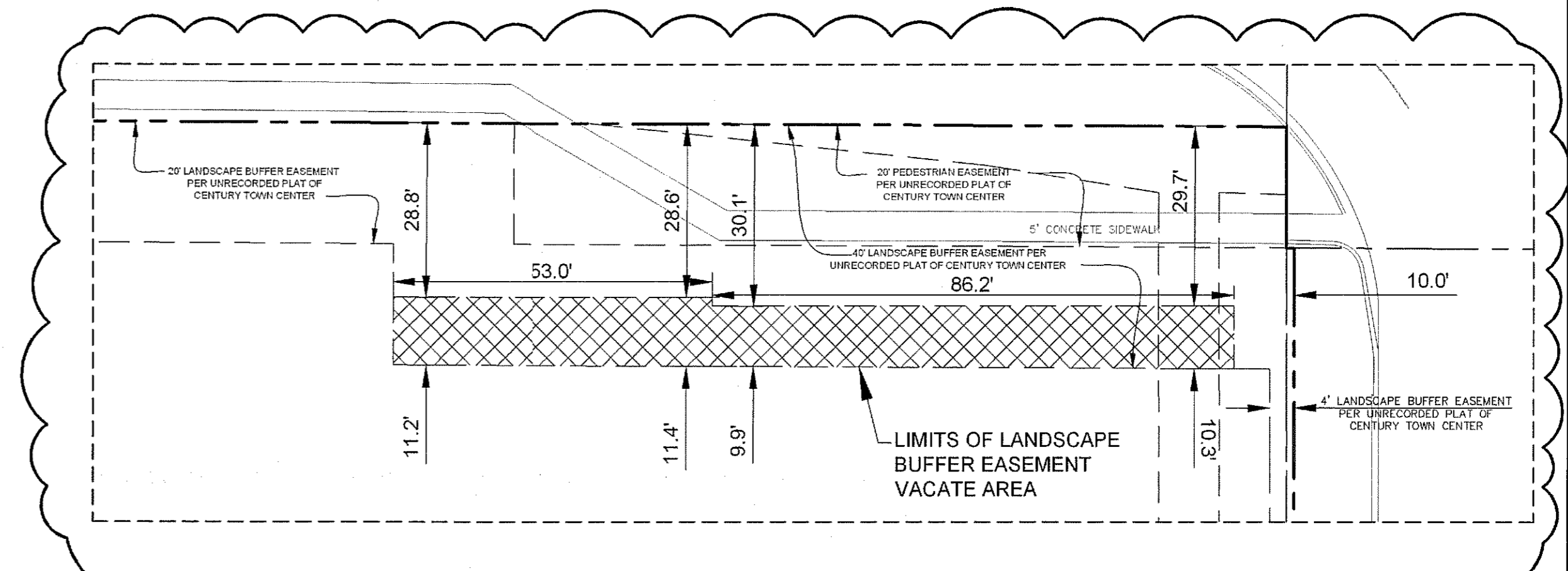


**DEMOLITION NOTES:**

- 1) CONTRACTOR SHALL FIELD VERIFY HORIZONTAL AND VERTICAL LOCATIONS OF ALL EXISTING UTILITIES AND DRAINAGE SYSTEMS PRIOR TO COMMENCEMENT OF DEMOLITION AND NOTIFY ENGINEER OF ANY DISCREPANCIES BETWEEN ACTUAL FIELD CONDITIONS AND THESE DRAWINGS.
- 2) CONTRACTOR SHALL CALL 1-800-432-4700 AT LEAST 48 HOURS PRIOR TO CONSTRUCTION.
- 5) CONTRACTOR SHALL SOD ALL AREAS IN F.D.O.T. RIGHT-OF-WAY AND HOME DEPOT ACCESS EASEMENT DISTURBED BY DEMOLITION AND CONSTRUCTION ACTIVITIES.
- 6) SEE SHEETS C14-C15 FOR STORMWATER POLLUTION PREVENTION PLAN (S.W.P.P.P.), NOTES AND DETAILS.
- 7) SEE SHEET L2 FOR TREE PROTECTION DETAILS
- 8) CONTRACTOR SHALL BE RESPONSIBLE FOR OBTAINING F.D.E.P. PERMIT FOR ANY DEWATERING OPERATIONS.

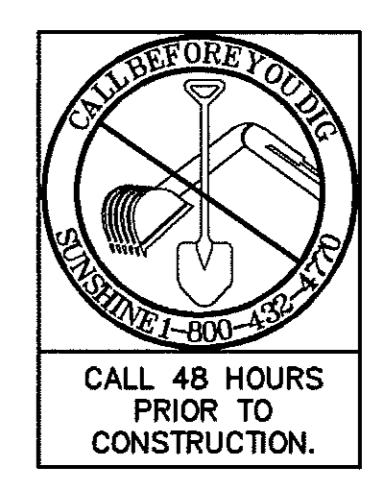
**LEGEND:**

- REMOVE EXISTING CONC. CURB
- ✕ PALM EXISTING TREE TO BE REMOVED
- ✱ PALM EXISTING TREE TO REMAIN



△ LANDSCAPE BUFFER EASEMENT VACATE DETAIL  
SCALE: 1" = 20'

LINE	LENGTH	BEARING
L1	20.00'	S 00°02'10" W
L2	1.24'	S 89°45'07" E



**DRMP**  
ENGINEERS • SURVEYORS • PLANNERS • SCIENTISTS  
941 Lake Baldwin Lane - Orlando, Florida 32814  
Phone: 407.896.0594 Fax: 407.896.4836  
Florida Certificate of Authorization No. 2648

Dyer, Riddle, Mills, & Precourt, Inc.

WARNING  
IF THIS BAR DOES NOT EXIST IN THIS DOCUMENT IS NOT TO SCALE

JOHN C. KELLY, P.E.  
FLORIDA P.E. #44011

**ABC LIQUORS, INC.**  
888 S. ORANGE AVE. - ORLANDO, FLA. 32824  
**ABC FINE WINE & SPIRITS STORE NO. 43**  
5905 20th STREET, VERO BEACH, FLORIDA, 32966

**DEMOLITION PLAN**

DRAWN: CKS  
CHECKED: JCK  
DATE: AUGUST, 2009  
SCALE: 1" = 20'  
JOB No: 09-0289.000  
SHEET: 4 OF 21

**C4**

\\01-clinet01\projects\Projects\09-0289.000\_ABC\_Store\_#43\_Hest\_Vero\General-Civil\19-03-Plan\CO4\_A3\_DEMO.dwg Plotter: Oct 22, 2009 - 3:54pm by emith  
 REMAINDER OF TRACT 9, THE INDIAN RIVER FARMS COMPANY, PLAT BOOK 2, PAGE 25  
 C04\_A3\_DEMO.dwg