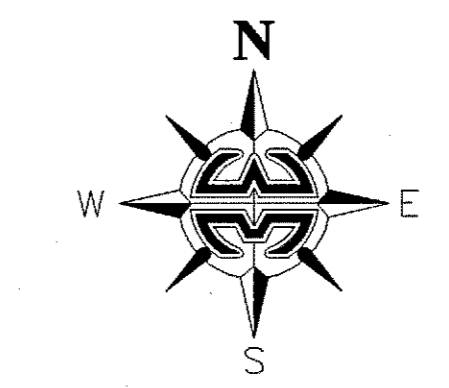
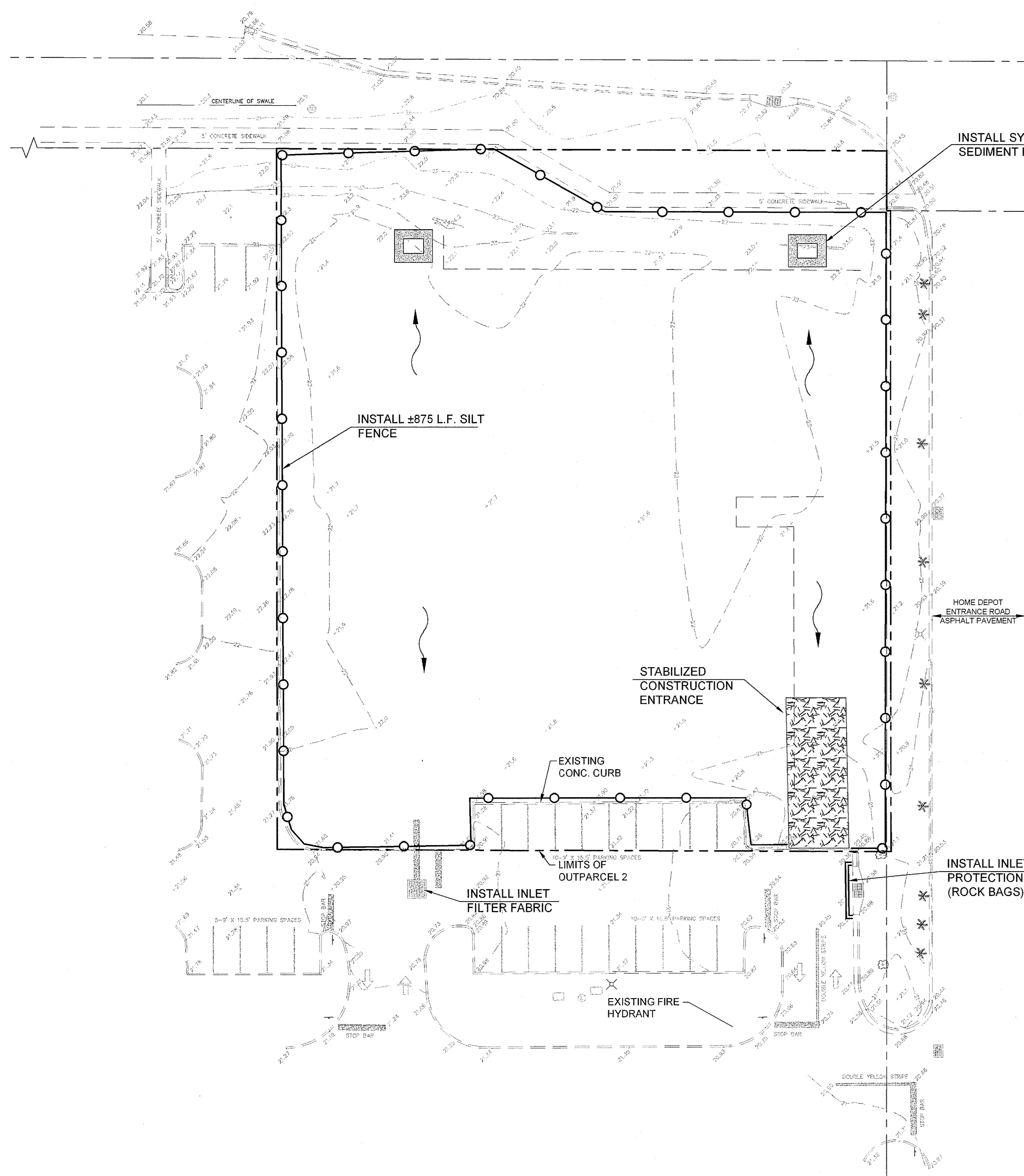





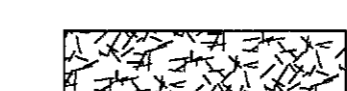
\\01-clinet\01\_projects\Projects\09-0289.000-ABC-Store-#43-Work\Work\General-Draw\39-03-Plans\C14\_A3\_SWPPP.dwg Plotted: Oct 22, 2009 - 3:59pm by csmith  
 C14\_A3\_SWPPP.dwg



**STORMWATER POLLUTION PREVENTION PLAN (SWPPP) NOTE:**

A STORMWATER POLLUTION PREVENTION PLAN (SWPPP) SHALL BE PREPARED BY THE CONTRACTOR. CONTRACTOR SHALL EXECUTE ALL MEASURES NECESSARY TO LIMIT THE TRANSPORTATION OF SEDIMENTS OUTSIDE THE LIMITS OF THE PROJECT TO THE VOLUME AND AMOUNT AS THAT ARE EXISTING PRIOR TO COMMENCEMENT OF CONSTRUCTION. THIS CONDITION MUST BE SATISFIED UNTIL PROJECT IS FULLY COMPLETED AND ACCEPTED. CONTRACTOR SHALL PROVIDE ROUTINE MAINTENANCE ON TEMPORARY EROSION CONTROL FEATURES AT HIS EXPENSE. PROVISION MUST BE MADE TO PRESERVE THE INTEGRITY AND CAPACITY OF CHECK WEIRS, SEDIMENT BASINS, SLOPE DRAINS, GRADING PATTERNS, ETC. REQUIRED TO MEET THIS PROVISION THROUGH OUT THE LIFE OF CONSTRUCTION. CONTRACTOR SHALL PROVIDE HAY BALES, SILT BARRIERS, MURAFI FILTERS, TEMPORARY GRASSING, ETC. AS REQUIRED TO FULLY COMPLY WITH THE INTENT OF THIS SPECIFICATION. CONTRACTOR SHALL PROVIDE CONTINUOUS MONITORING OF EROSION AND SEDIMENT CONTROLS TAKEN AND SHALL DOCUMENT ALL CORRECTIVE MEASURES. A COPY OF THE APPROVED SWPPP SHALL BE KEPT ON SITE AT ALL TIMES FOR REVIEW BY OWNER'S REPRESENTATIVE AND BY NPDES INSPECTORS.

**LEGEND:**

-  PROPOSED SILT FENCE
-  PROPOSED SYNTHETIC BALE SEDIMENT FILTER AROUND INLET (TYP.)
-  DIRECTION OF DRAINAGE FLOW
-  STABILIZED CONSTRUCTION ENTRANCE

**NOTES:**

- 1) SEE SHEET C15 FOR EROSION CONTROL DETAILS.

**EROSION CONTROL NOTE:**

1. THE STORMWATER SYSTEM SHALL BE CONSTRUCTED FIRST. THE CONTRACTOR IS REQUIRED TO FOLLOW THE EROSION AND SEDIMENT CONTROL PLAN FROM BEFORE CONSTRUCTION BEGINS UNTIL AS-BUILTS HAVE BEEN SUBMITTED. IF THE DESIGNED EROSION AND SEDIMENT CONTROL PLAN DOES NOT WORK OR BECOMES INEFFECTIVE, THE CONTRACTOR SHALL USE THE FLORIDA STORMWATER, EROSION AND SEDIMENT CONTROL INSPECTOR'S MANUAL TO IMPLEMENT CHANGES THAT WILL WORK.
2. SOD ALL DISTURBED AREAS.
3. THE CONSTRUCTION ENTRANCE SHALL BE STABILIZED AND GRADED 50' FROM E.O.P. TO PREVENT PONDING AND MUD. ALL MATERIALS SPILLED, DROPPED OR TRACKED ONTO PUBLIC ROAD SHALL BE REMOVED DAILY. IF ADDITIONAL PONDING AND MUD TRACKING PREVENTION MEASURES ARE REQUIRED, THEN CONTRACTOR SHALL CONSTRUCT A SOIL TRACKING PREVENTION DEVICE PER F.D.O.T. DESIGN STANDARDS INDEX #106, LATEST EDITION.

REVISIONS	BY
△ I.R.C. COMMENTS	CKS

**DRMP**  
 ENGINEERS - SURVEYORS - PLANNERS - SCIENTISTS  
 941 Lake Baldwin Lane - Orlando, Florida 32814  
 Phone: 407.896.0594 Fax: 407.896.4836  
 Florida Certificate of Authorization No. 2648

Div. Riddle, Mills, & Precourt, Inc.

WARNING  
 IF THIS BAR DOES NOT APPEAR IN THIS COPY OF THIS DOCUMENT IS NOT TO SCALE

JOHN F. KELLY, P.E.  
 FLORIDA P.E. #44011

**ABC LIQUORS, INC.**  
 8888 S. ORANGE AVE. - ORLANDO, FLA. 32824

**ABC FINE WINE & SPIRITS STORE NO. 43**  
 5905 20th STREET, VERO BEACH, FLORIDA, 32966

STORMWATER POLLUTION PREVENTION PLAN

DRAWN: CKS  
 CHECKED: JCK  
 DATE: AUGUST, 2009  
 SCALE: 1" = 20'  
 JOB No: 09-0289.000  
 SHEET: 14 OF 21

**C14**