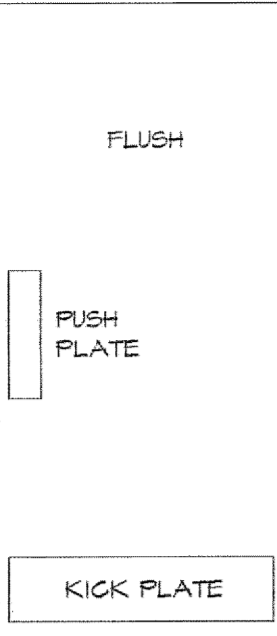
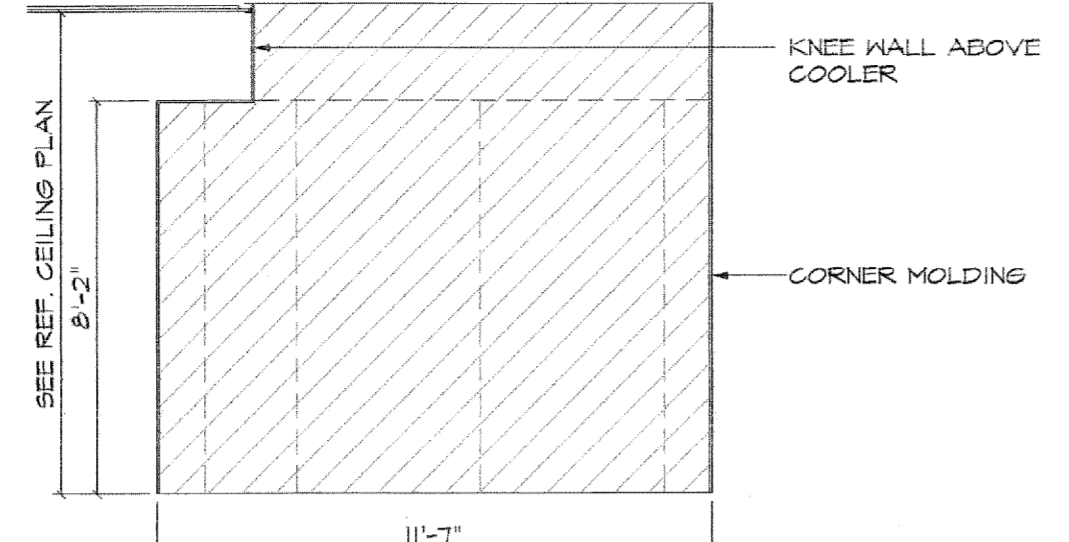


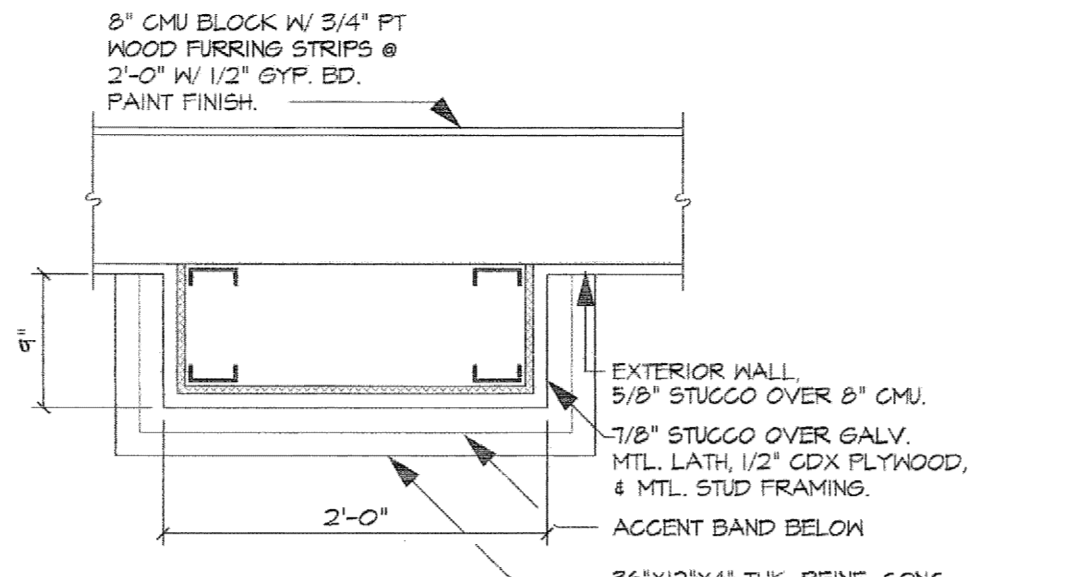
DOOR "A"



2 DOOR ELEV.
SCALE: N.T.S.



3 W.I.B.C. ELEVATION
SCALE: 1/4" = 1'-0"



4 COLUMN DETAIL
SCALE: 1" = 1'-0"
18 LOCATIONS

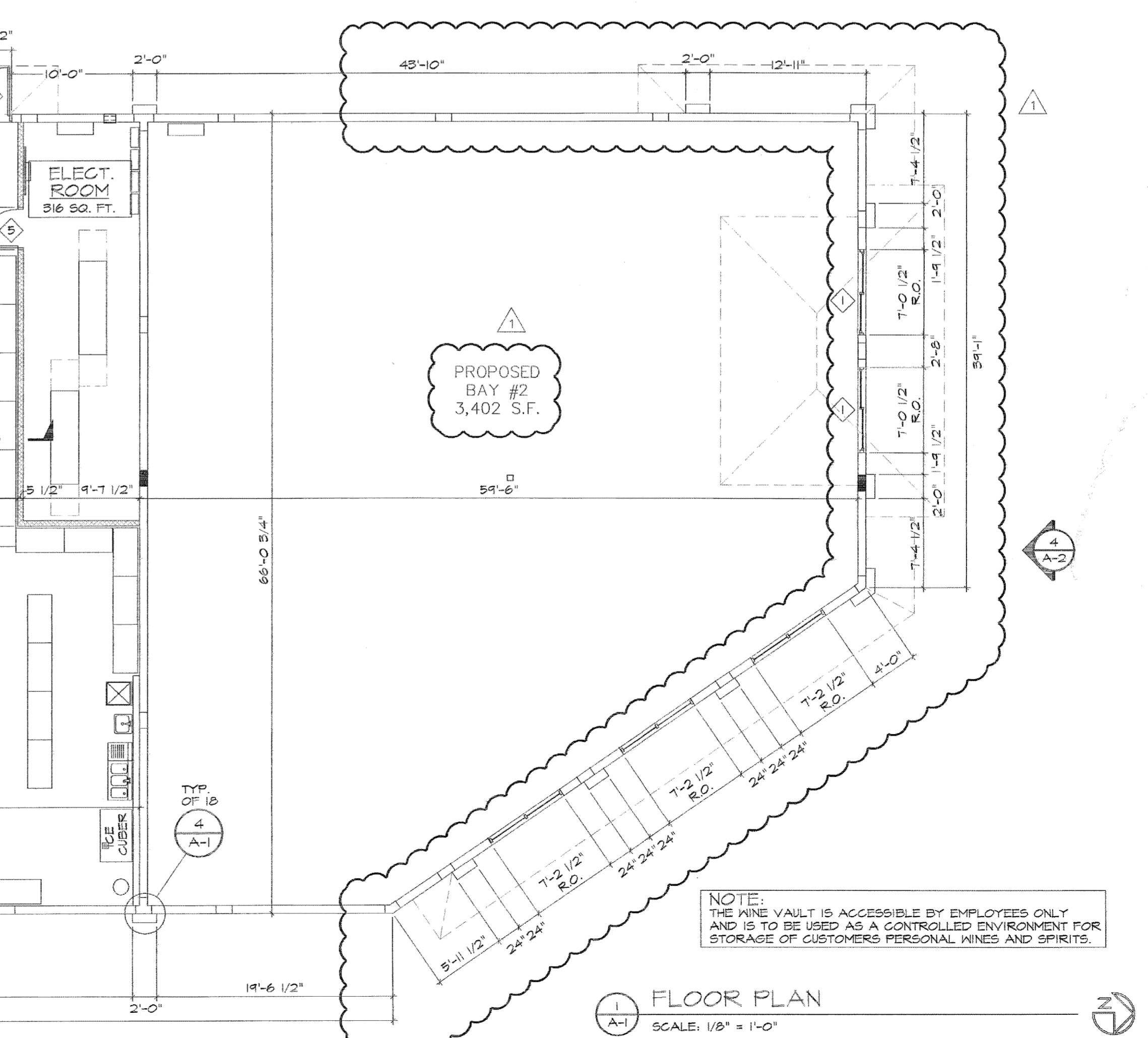
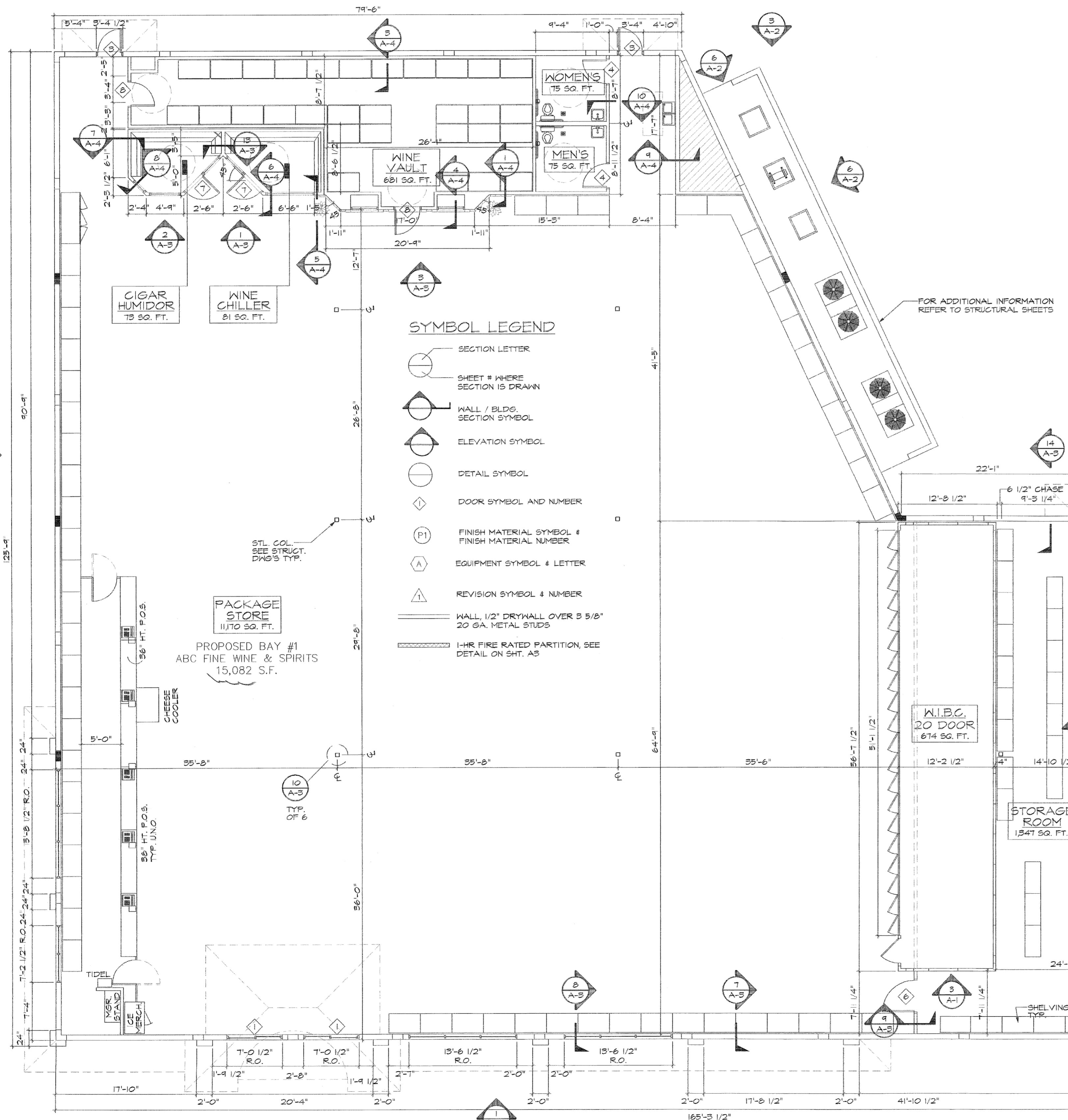
DOOR LOCATION SCHEDULE				CONTRACTOR NOTES:	
MK#	QTY	DOOR LOCATION / REMARKS	DOOR ELEVATION		
1	2	STANLEY AUTO-SLIDE 5000 DOOR W/ SINGLE ACTION BREAKAWAY.	SEE EXT. ELEV.	C-1	PROVIDED AND INSTALLED BY CONTRACTOR.
2	1	REAR STORE EMERGENCY EXIT	A	C-2	PROVIDED BY OWNER INSTALLED BY CONTRACTOR.
3	2	EMERGENCY EXIT	A	C-3	PROVIDED AND INSTALLED BY OWNER.
4	2	MEN & LADIES RESTROOMS PRIVACY LOCK / ADA APPROVED	A		
5	1	ELECTRICAL ROOM FIRE RATED B-LABEL (45 MIN.)	A		
6	1	STORAGE ROOM	A		
7	2	CIGAR HUMIDOR / WINE CHILLER	SEE HUMIDOR / CHILLER ELEV.		
8	1	WINE VAULT (DOOR, FRAME & HARDWARE PROVIDED BY OWNER - INSTALLATION BY CONTRACTOR)	SEE VAULT ELEV.		

EXTERIOR DOOR SCHEDULE												NOTE: ALL DOORS TO BE EQUIPPED W/ APPROVED ADA OPERABLE HANDLES.	
MK#	QTY	MANUF.	FL#	NOA#	MODEL	SIZE	APPLIED	DESIGN	TYPE	FRAME	FINISH	PROTECTION	ITEM
1	2	STANLEY	FL6249.3	05-0902.01	SERIES 4800	7'-0" X 7'-8"	+27.2/-29.8	+45.9/-45.9	6" ALUMINUM	6" ALUMINUM	ANOD. BRONZE	HURRICANE SHUTTERS	C-3
2	1	CECO	FL4553.1	03-0411.01	OMEGA	4'-0" X 7'-0"	+29/-31.6	+60/-60	16 GA. STEEL	16 GA. STEEL	PAINTED	IMPACT RESISTANT	C-1
3	2	CECO	FL4553.1	03-0411.01	OMEGA	3'-0" X 7'-0"	+29/-31.6	+60/-60	16 GA. STEEL	16 GA. STEEL	PAINTED	IMPACT RESISTANT	C-1

EXTERIOR HARDWARE SCHEDULE												
MK#	QTY	HINGES	CLOSER	THRESHOLD	KICK PL.	PUSH PL.	PANIC BAR	STOP	SILENCER	LOCK	BOTTOM	ITEM
1	2	BY MANUF.	AUTO.	ADA APPROVED	NO	NO	+27.2/-29.8	NO	BY MANUF.	BY MANUF.	BY MANUF.	C-3
2	1	4 1/2 X 4 1/2 MORTISE N.R.P.	LCN1461	ADA APPROVED	12" X 3/4" ROCK-WOOD STAIN. STL.	NO	DETEX - VALUE SERIES V40XEH	YES	WEATHER STRIP	BC180-626 (SCHLAGE)	DOOR BOLT	DOOR SWEEP
3	2	4 1/2 X 4 1/2 MORTISE N.R.P.	LCN1461	ADA APPROVED	12" X 3/4" ROCK-WOOD STAIN. STL.	NO	DETEX - VALUE SERIES V40XEH	YES	WEATHER STRIP	BC180-626 (SCHLAGE)	DOOR BOLT	DOOR SWEEP

INTERIOR DOOR SCHEDULE												NOTE: ALL DOORS TO BE EQUIPPED W/ APPROVED ADA OPERABLE HANDLES.	
MK#	QTY	MANUF.	FL#	NOA#	MODEL	SIZE	APPLIED	DESIGN	TYPE	FRAME	FINISH	PROTECTION	ITEM
4	2	CECO	N/A	N/A	OMEGA	3'-0" X 7'-0"	N/A	N/A	1 3/4"	16 GA. STEEL	16 GA. STEEL	PAINTED	INTERIOR DOOR
5	1	CECO	N/A	N/A	OMEGA	3'-0" X 7'-0"	N/A	N/A	1 3/4"	16 GA. STEEL	16 GA. STEEL	PAINTED	INTERIOR DOOR
6	1	CECO	N/A	N/A	OMEGA	3'-0" X 7'-0"	N/A	N/A	1 3/4"	16 GA. STEEL	16 GA. STEEL	PAINTED	INTERIOR DOOR
7	2	N/A	N/A	N/A	N/A	3'-0" X 7'-0"	N/A	N/A	4" ALUMINUM	4" ALUMINUM	PAINTED	INTERIOR DOOR	
8	1	CECO	N/A	N/A	OMEGA	3'-0" X 7'-0"	N/A	N/A	1 3/4"	16 GA. STEEL	16 GA. STEEL	PAINTED	INTERIOR DOOR

INTERIOR HARDWARE SCHEDULE												
MK#	QTY	HINGES	CLOSER	THRESHOLD	KICK PL.	PUSH PL.	PANIC BAR	STOP	SILENCER	LOCK	BOTTOM	ITEM
4	2	4 1/2 X 4 1/2 MORTISE HAGER 1124	LCN1461	ADA APPROVED	NO	NO	NO	NO	NO	AL405-SAT-626 (SCHLAGE)	NO	C-1
5	1	4 1/2 X 4 1/2 MORTISE FIRE RATED BL-390	LCN1461	ADA APPROVED	NO	NO	NO	NO	NO	ALBOPD-SAT-626 (SCHLAGE)	NO	C-1
6	1	4 1/2 X 4 1/2 MORTISE HAGER 1124	LCN1461	ADA APPROVED	NO	NO	NO	NO	NO	ALBOPD-SAT-626 (SCHLAGE)	NO	C-1
7	2	RECESSED	ADA APPROVED	ADA APPROVED	NO	NO	NO	NO	NO	SEE HUMIDOR / CHILLER NOTES	NO	C-1
8	1	4 1/2 X 4 1/2 MORTISE HAGER 1124	LCN1461	ADA APPROVED	NO	ANTIQUE FULL HANDLE	NO	NO	WEATHER STRIP	MORTISE CYL. W/ INT. THUMB TURN	BOTTOM DOOR SWEEP	C-2



1 FLOOR PLAN
SCALE: 1/8" = 1'-0"

REVISIONS		BY
1	BUILDING DEPT. REV. 1-9-08	MCM

ARTERBURY ARCHITECTS, INC.
A A 26000718
2400 SAND LAKE ROAD
LONGWOOD, FLORIDA 32779
(407) 774-2283
FAX (407) 774-7977

Cordell Anthony
1-11-08

ABC LIQUORS, INC.
8989 S. ORANGE AVE. - ORLANDO, FLA. 32809
ABC STORE NO. 50
SAWGRASS MILLS, SUNRISE, FLORIDA

DRAWN:	R. GARDONA
CHECKED:	S. RIVERA
DATE:	3-1-07
SCALE:	AS NOTED
JOB No.:	50
SHEET	

A-1