

REVISIONS	BY
△ CITY ENG. COMMENTS	RAC

DRMP
 ENGINEERS - SURVEYORS - PLANNERS - SCIENTISTS
 1505 East Colonial Drive - Orlando, Florida 32803
 Phone: 407.896.0594 Fax: 407.896.4836
 Florida Certificate of Authorization No. 2648

Dyer, Riddle, Mills, & Precourt, Inc.

WARNING
 IF THIS DRAWING DOES NOT BE SIGNED BY THE DESIGNER, THIS COPY OF THIS DOCUMENT IS NOT TO SCALE

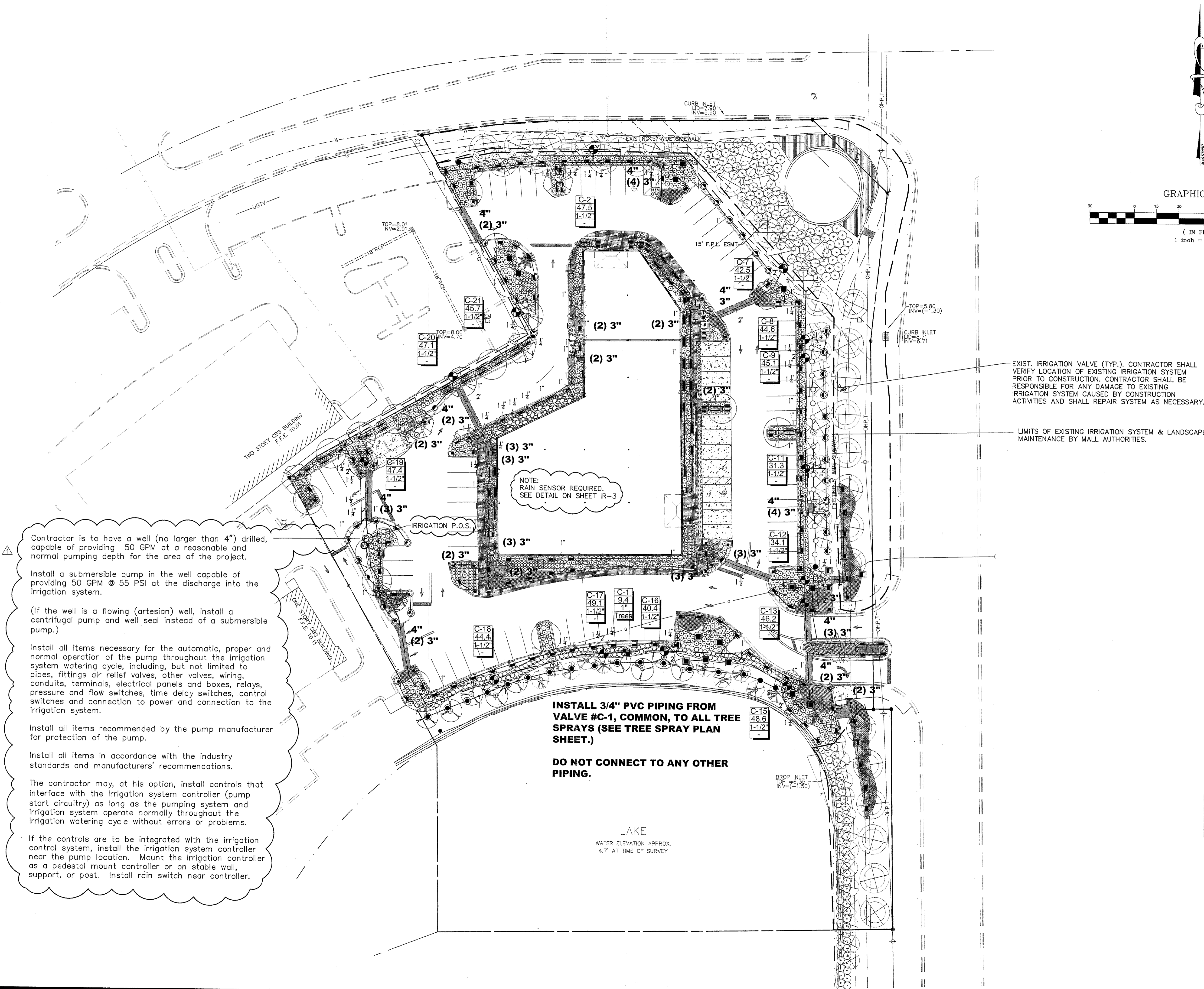
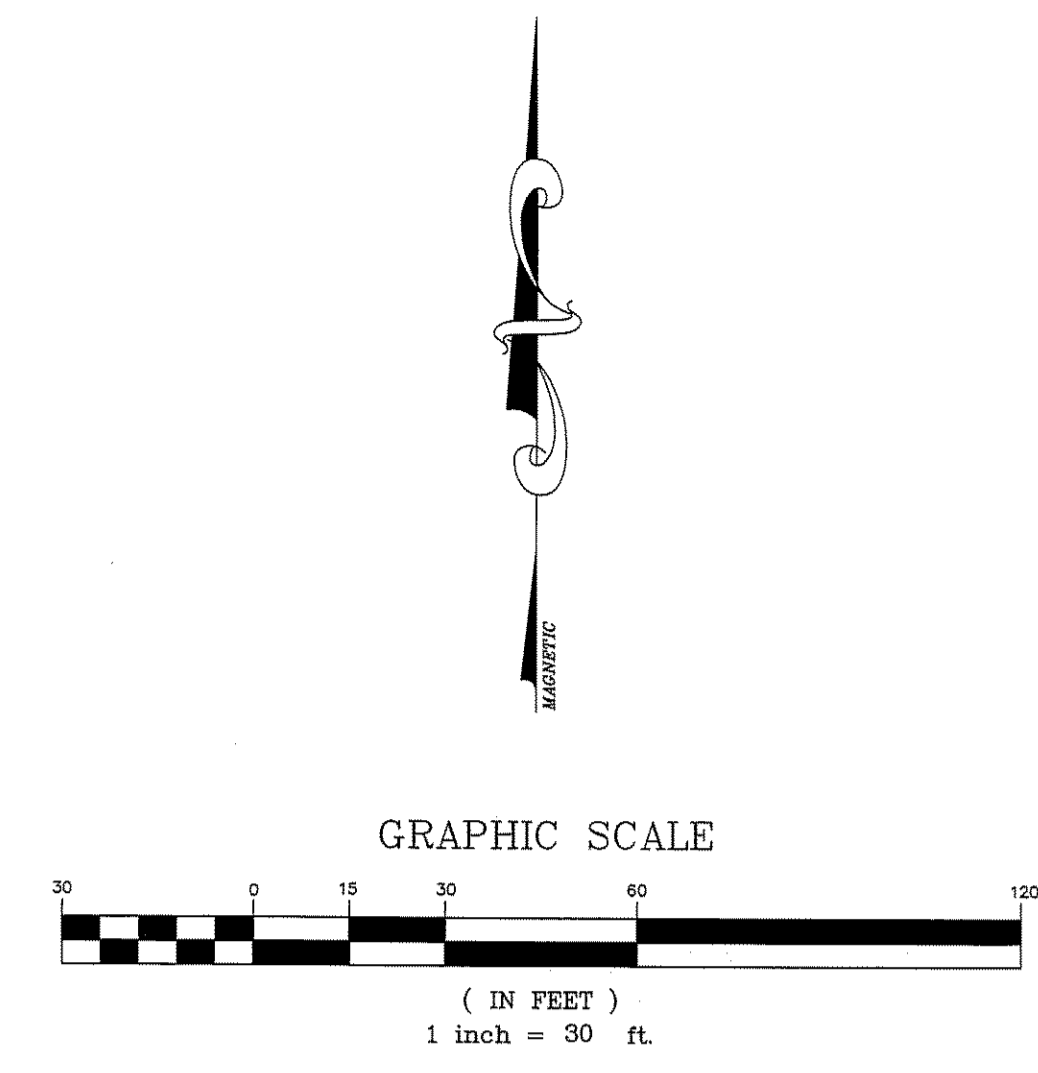
JUN 07 2007
 RUSSELL A. CAVE
 FLORIDA RLA #1694

ABC LIQUORS, INC.
 8999 S. ORANGE AVE. - ORLANDO, FLA. 32824

ABC FINE WINE & SPIRITS STORE #50
 SAWGRASS MILLS, NORTH FLAMINGO ROAD, SUNRISE, FLORIDA

IRIGATION PLAN

DRAWN:	RAC
CHECKED:	RAC
DATE:	OCT. 2006
SCALE:	1" = 30'
JOB No:	05-0344.000
SHEET:	10



EXIST. IRRIGATION VALVE (TYP.). CONTRACTOR SHALL VERIFY LOCATION OF EXISTING IRRIGATION SYSTEM PRIOR TO CONSTRUCTION. CONTRACTOR SHALL BE RESPONSIBLE FOR ANY DAMAGE TO EXISTING IRRIGATION SYSTEM CAUSED BY CONSTRUCTION ACTIVITIES AND SHALL REPAIR SYSTEM AS NECESSARY.

LIMITS OF EXISTING IRRIGATION SYSTEM & LANDSCAPE MAINTENANCE BY MALL AUTHORITIES.

NOTE:
 RAIN SENSOR REQUIRED.
 SEE DETAIL ON SHEET IR-3

INSTALL 3/4" PVC PIPING FROM VALVE #C-1, COMMON, TO ALL TREE SPRAYS (SEE TREE SPRAY PLAN SHEET.)

DO NOT CONNECT TO ANY OTHER PIPING.

LAKE
 WATER ELEVATION APPROX.
 4.7' AT TIME OF SURVEY

Contractor is to have a well (no larger than 4") drilled, capable of providing 50 GPM at a reasonable and normal pumping depth for the area of the project.

Install a submersible pump in the well capable of providing 50 GPM @ 55 PSI at the discharge into the irrigation system.

(If the well is a flowing (artesian) well, install a centrifugal pump and well seal instead of a submersible pump.)

Install all items necessary for the automatic, proper and normal operation of the pump throughout the irrigation system watering cycle, including, but not limited to pipes, fittings air relief valves, other valves, wiring, conduits, terminals, electrical panels and boxes, relays, pressure and flow switches, time delay switches, control switches and connection to power and connection to the irrigation system.

Install all items recommended by the pump manufacturer for protection of the pump.

Install all items in accordance with the industry standards and manufacturers' recommendations.

The contractor may, at his option, install controls that interface with the irrigation system controller (pump start circuitry) as long as the pumping system and irrigation system operate normally throughout the irrigation watering cycle without errors or problems.

If the controls are to be integrated with the irrigation control system, install the irrigation system controller near the pump location. Mount the irrigation controller as a pedestal mount controller or on stable wall, support, or post. Install rain switch near controller.