

2 SECTION @ JOIST
SCALE: 1/2" = 1'-0"

3 SECTION @ JOIST
SCALE: 1/2" = 1'-0"

4 SECTION @ AWNING
SCALE: 1/2" = 1'-0"

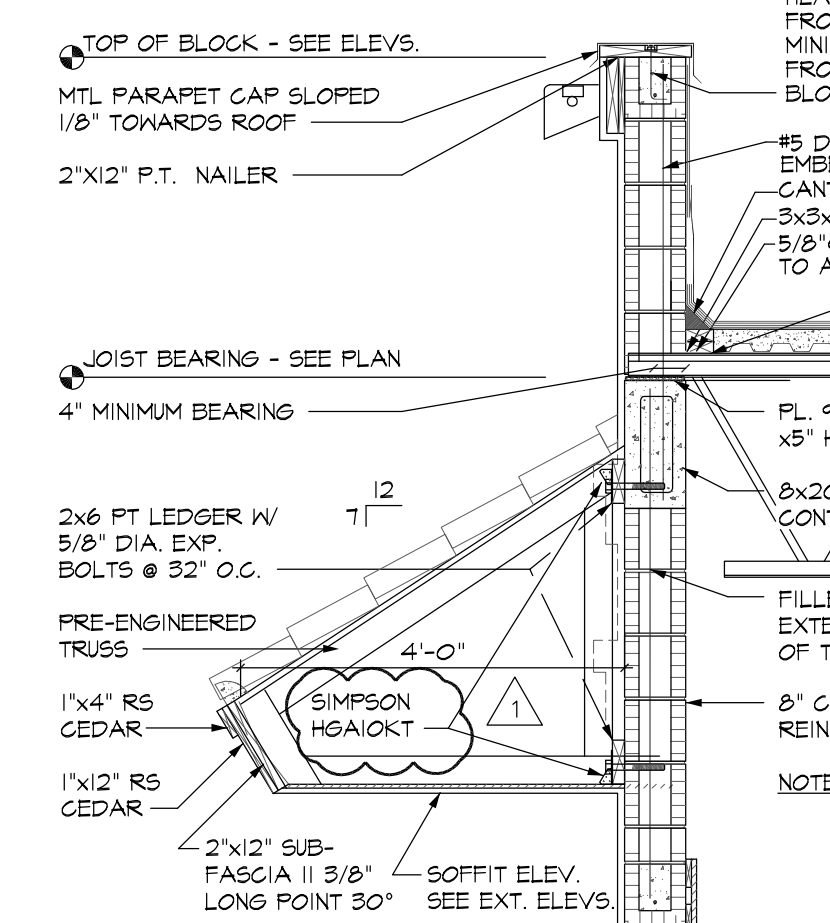
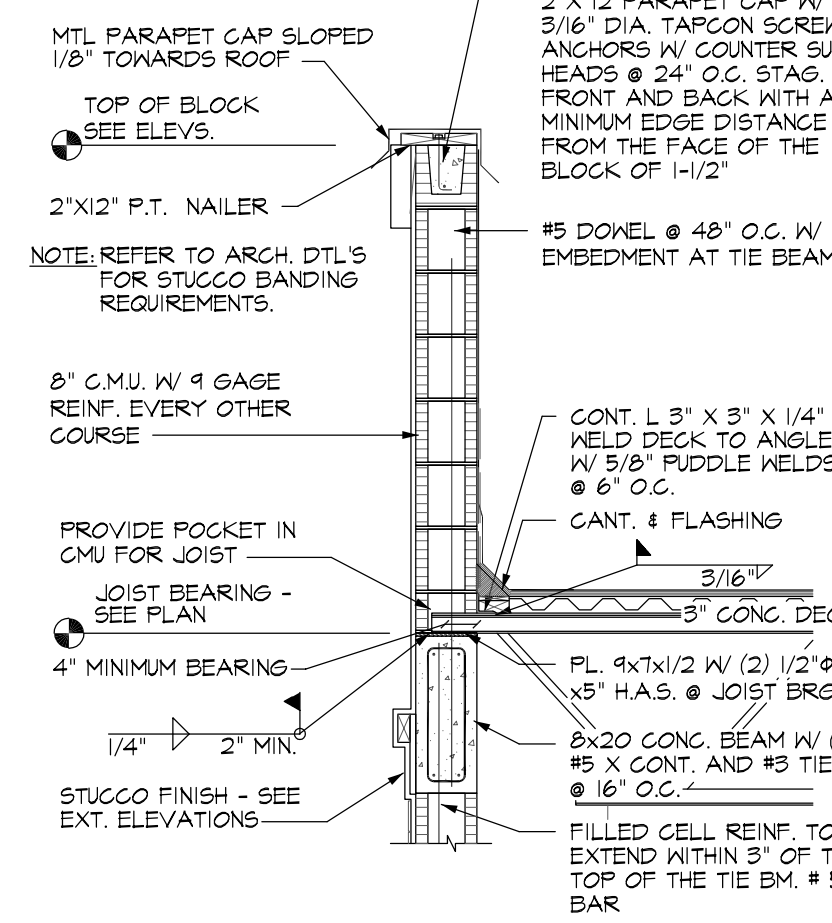
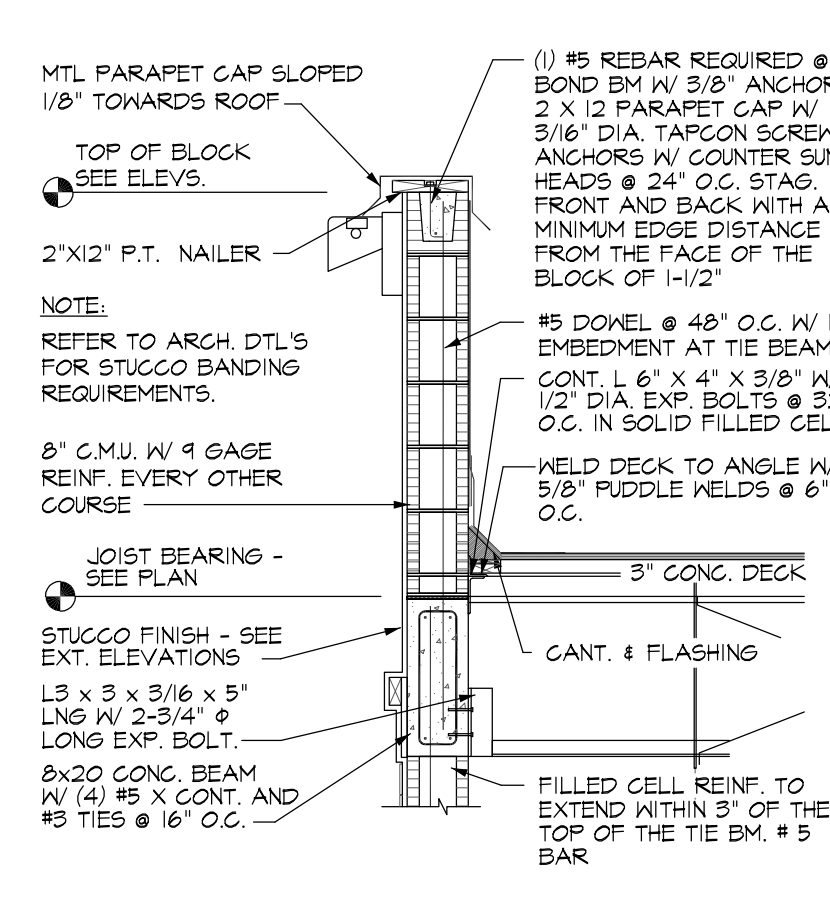
NOTE:
(x'-x') DENOTES TOP OF STL. ELEV.

NOTE:
NET UPLIFT ON JOISTS = 36 PSF

NOTE:
BTJ - JOISTS CLOSEST TO STEEL COLUMN SHALL HAVE BOLTED CONNECTIONS

SEE SHEET S-3 FOR STRUCTURAL NOTES FOR ROOF FRAMING

5 SECTION @ WALL
SCALE: 1/2" = 1'-0"



SUPREMA MODIFIED BITUMEN SYSTEM, SEE ARCHITECTURAL ROOF PLAN FOR ADDITIONAL INFO.
3" THICK TOP COAT, MIN. 300 PSI COMPRESSION STRENGTH CELLULAR CONCRETE.
2" x 4" x 1" THICK CELGORE POLYBOARD W/ 8 - 2 1/2" DIA. HOLES PER MANUF.
CELGORE SLURRY COAT, SHALL BE 1/8" MINIMUM ABOVE TOPS OF CORRUGATED METAL DECK.
1 1/2" x 22 GA. METAL DECK WELDED TO JOISTS IN 36/4 PATTERN W/ 1 - #10 TEK SIDE LAP IN 3 SPAN CONDITION.
CONT. L 6 x 4 x 3/8 (LLV) W/ 1/2" DIA. ANCHORS @ 4'-0" O.C. TO SUPPORT DECK

MTL PARAPET CAP SLOPED 1/8" TOWARDS ROOF
TOP OF BLOCK - SEE ELEV.
2"x12" P.T. NAILER
NOTE: REFER TO ARCH. DTL'S FOR STUCCO BANDING REQUIREMENTS.
8" CMU W/ 9 GAGE REINF. EVERY OTHER COURSE
JOIST BEARING - SEE PLAN
STUCCO FINISH - SEE EXT. ELEVATIONS
L3 x 3 x 3/16 x 5" LNS W/ 2-3/4" x LONG EXP. BOLT.
8x20 CONG. BEAM W/ (4) #5 X CONT. AND #5 TIES @ 16" O.C.

MTL PARAPET CAP SLOPED 1/8" TOWARDS ROOF
TOP OF BLOCK - SEE ELEV.
2"x12" P.T. NAILER
NOTE: REFER TO ARCH. DTL'S FOR STUCCO BANDING REQUIREMENTS.
8" CMU W/ 9 GAGE REINF. EVERY OTHER COURSE
PROVIDE POCKET IN CMU FOR JOIST
JOIST BEARING - SEE PLAN
4" MINIMUM BEARING
1/4" x 2" MIN.
STUCCO FINISH - SEE EXT. ELEVATIONS

TOP OF BLOCK - SEE ELEV.
MTL PARAPET CAP SLOPED 1/8" TOWARDS ROOF
2"x12" P.T. NAILER
JOIST BEARING - SEE PLAN
4" MINIMUM BEARING
2x6 PT LEDGER W/ 5/8" DIA. EXP. BOLTS @ 32" O.C.
PRE-ENGINEERED TRUSS
1 1/4" x 5" CEDAR
1 1/2" x 5" CEDAR
2"x12" SUB-FASCIA II 3/8" LONG POINT 30"
SOFFIT ELEV. SEE EXT. ELEV.
FILLED CELL REINF. TO EXTEND WITHIN 3" OF THE TOP OF THE TIE BM. # 5 BAR

(1) #5 REBAR REQUIRED @ BOND BM W/ 3/8" ANCHOR 2 X 12 PARAPET CAP W/ 3/16" DIA. TARGON SCREW ANCHORS W/ COUNTER SUNK HEADS @ 24" O.C. STAG. FRONT AND BACK WITH A MINIMUM EDGE DISTANCE FROM THE FACE OF THE BLOCK OF 1-1/2"
#5 DOVEL @ 48" O.C. W/ 12" EMBEDMENT AT TIE BEAM
3/8" x 1/4" CONT. PERIMETER 5/8" RIDDLE WELD DECK TO ANGLE @ 6" O.C.
3/16" x 3/8" L3 CONG. DECK SLOPED 1/4" PER FT. TO RD. TYP.
FILLED CELL REINF. TO EXTEND TO 3" FROM TOP OF THE BM.
8" CMU W/ 9 GAGE REINF. EVERY OTHER COURSE
NOTE: REFER TO ARCH. DTL'S FOR STUCCO BANDING REQUIREMENTS.

REVISIONS	BY
BUILDING DEPT. REV. 5-15-08	MCM

731 E. HIGHWAY 50
CLERMONT, FLORIDA 34711
PHONE: (352)242-0100
FAX: (352)242-0302

Lindemann Bentzon Bojack
ENGINEERING DESIGN INSPECTION <<

ABC LIQUORS, INC.
8989 S. ORANGE AVE. - ORLANDO, FLA. 32809

ABC STORE NO. 50
SAWGRASS MILLS, SUNRISE, FLORIDA

DRAWN:	R. CARDONA
CHECKED:	S. RIVERA
DATE:	5-1-07
SCALE:	AS NOTED
JOB No:	50
SHEET	

S-2

1-1 ROOF FRAMING PLAN
SCALE: 1/8" = 1'-0"

ROOF FRAMING PLAN