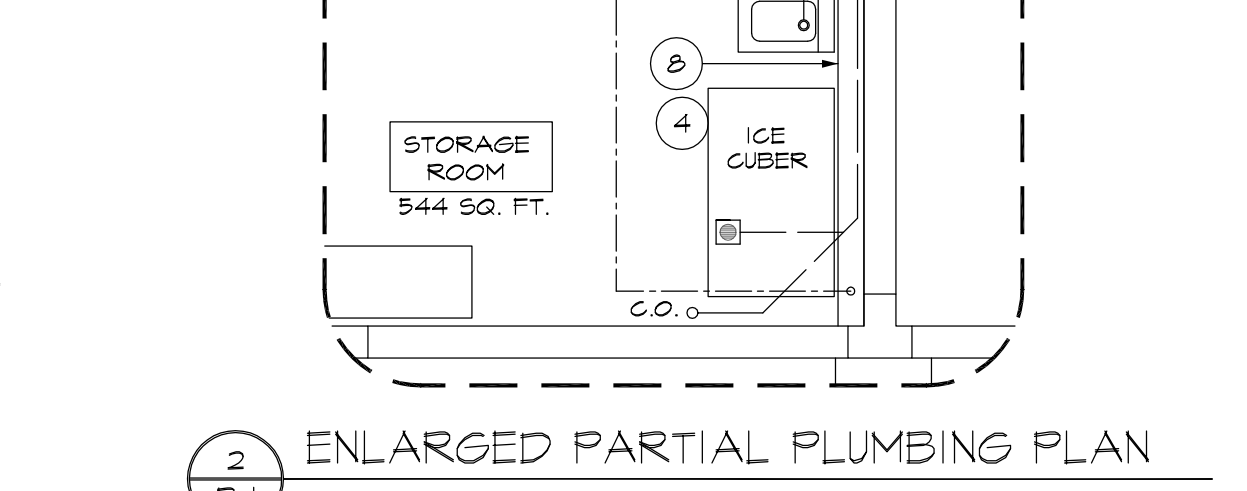
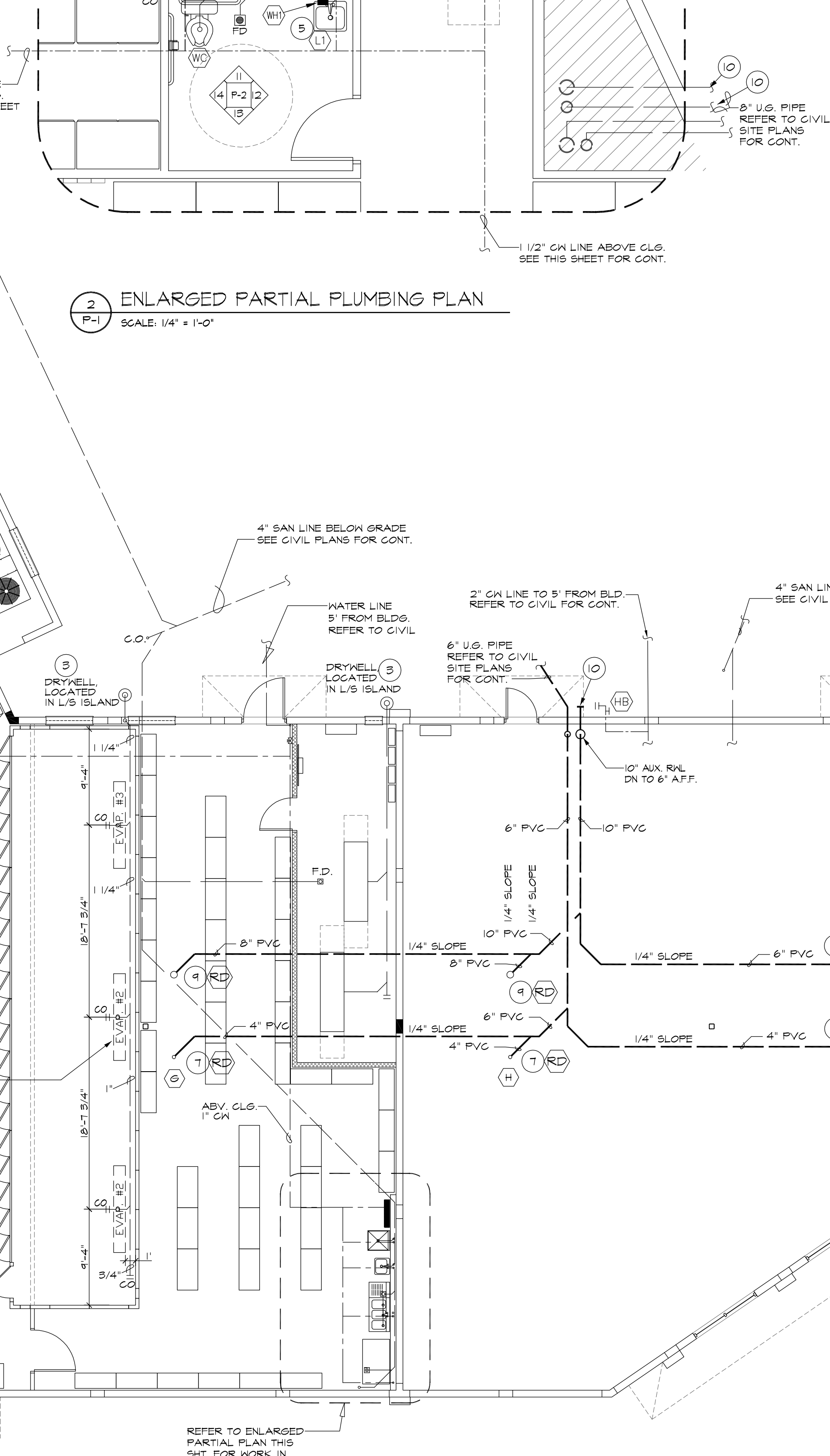
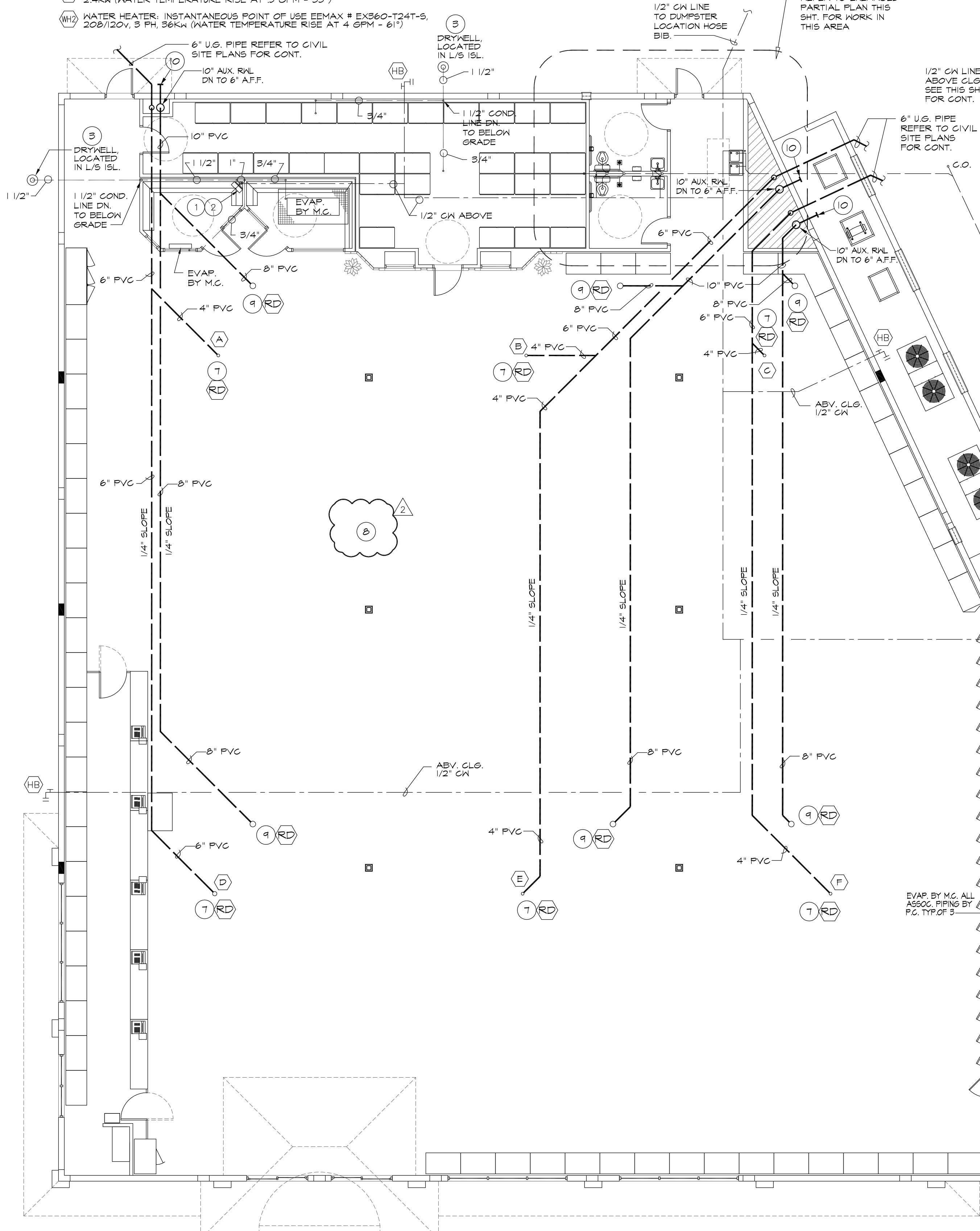


**FIXTURE SCHEDULE**

- (LI) H.C. LAVATORY, AMERICAN STANDARD MODEL NO. C956.028 MTD. WITH TOP AT 34" A.F.F. PROVIDE WITH 2000.100 FAUCET, GRID STRAINER AND ANGLE ANGLE STOPS. PROVIDE TRAP INSULATION WRAP, BROCAR PRODUCTS, INC. OR EQ.
- (WC) WATER CLOSET, KOHLER MODEL K-4326 (BOYLE) & K4654 (TANK), 16 GAL. FLUSH. PROVIDE WITH GREYVA K-4664 SEAT, LESS COVER.
- (US) UTILITY SINK 24"x24", PROVIDE WITH AMERICAN STANDARD MODEL NO. 1402.192 FAUCET AND ANGLE STOPS.
- (DF) DRINKING FOUNTAIN, BARRIER-FREE SPLIT-LEVEL WATER COOLER AS MANUF. BY OASIS, MODEL NO. P8AMB, 1150 / 10
- (S) 3-COMPARTMENT SINK, AERO MODEL NO. P53 2112 W/ 18" DRAIN BOARD
- (PH) POST HYDRANT - ZURN MODEL # Z-1345 - 3/4"
- (HB) HOSE BIBB - ZURN MODEL # Z-1330 - 3/4"
- (RD) PRIMARY & AUXILIARY ROOF DRAIN, ZURN MODEL NO. Z-121 1/2" DIA. ROOF DRAIN, DURAN-COATED CAST IRON BODY, W/ GONIBO MEMBRANE FLASHING CLAMP / GRAVEL GUARD & LOW SILHOUETTE CAST IRON DOME. AUX. ROOF DRAIN SHALL BE LOCATED 8'-0" (MAX) FROM PRIMARY DRAIN ALLOWING NO MORE THAN 2' OF STANDING WATER.
- (WH) WATER HEATER, INSTANTANEOUS POINT OF USE EEMAX # SP2412, 120V, 1 PH, 2.4KW (WATER TEMPERATURE RISE AT 5 GPM - 55°)
- (WH2) WATER HEATER, INSTANTANEOUS POINT OF USE EEMAX # EX360-T24T-S, 208/120V, 3 PH, 36KW (WATER TEMPERATURE RISE AT 4 GPM - 61°)

**KEY NOTE'S:**

- (1) 1/2" VALVED CW DN TO HUMIDIFIER, NORTEC MODEL NO. N-200, INSTALLED BY M.C. WIRED BY E.C. ALL ASSOCIATED PIPING BY P.C.
- (2) ROUTE 3/4" OVERFLOW LINE FROM HUMIDIFIER VIA INDIRECT CONNECTION TO DRY WELL IN LANDSCAPED AREA
- (3) DRY WELL, REFER TO DETAIL ON SHT. P-2
- (4) 1/2" VALVED CW DN TO ICE CUBER
- (5) 1/2" HW & CW DN TO SINK
- (6) 1/2" CW UP TO HOSE BIBBS ON ROOF ABOVE
- (7) 6" RAL UP TO RD ABOVE
- (8) TO BE WRAPPED WITH FIRE BARRIER 3M FLEMUR WRAP 5A, TYP. AT ALL PVC PIPING ABOVE GLG.
- (9) 8" Ø AUX. RAL UP TO AUX. RD. ABOVE
- (10) DOWN SPOUT NOZZLE, ZURN MODEL NO. Z-2AB-194-55, POLISHED BRONZE WITH STAINLESS STEEL RODENT SCREEN 1/4"x1/4" ØP/S, PROVIDE CONC. SPLASH BLOCKS WHERE REQUIRED TERM. PIPE 6" A.F.F.
- (11) 3/4" HW & CW DN TO 3-COMP. SINK. SINK IS TO BE USED FOR SANITATION OF ICE SCOOP.



**2 ENLARGED PARTIAL PLUMBING PLAN**  
SCALE: 1/4" = 1'-0"

**2 ENLARGED PARTIAL PLUMBING PLAN**  
SCALE: 1/4" = 1'-0"

ABC PACKAGE STORE CONSTRUCTION			
1ST FLOOR GROSS AREA :	15,082 SQ. FT.		
OCCUPANCY (PROJECT AREA)			
Occupancy(s)/Group Classification :	GROUP M / Mercantile		
Public Area :	30 GROSS		
Non Public Area :	300 GROSS		
Public Area :	12,230 SQ. FT.	408 PEOPLE	
Non Public Area :	2,852 SQ. FT.	10 PEOPLE	
TOTAL		418 PEOPLE	
PLUMBING FIXTURES			
	Fixture Calc Per 403.1	Required	Proposed
W.C. Male:	1 per 500	1	1
Female:	1 per 500	1	1
Lav. Male:	1 per 750	1	1
Female:	1 per 750	1	1
Drinking Fountain(s):	1 per 1,000	1	2
Hand Sink:	N/A		1
Utility Sink:	N/A		1
3 Comp. Sink:	N/A		1

**ROOF AREA:**

(A)	2188.22	SQ. FT. TOTAL
(B)	2124.56	SQ. FT. TOTAL
(C)	1346.86	SQ. FT. TOTAL
(D)	2427.04	SQ. FT. TOTAL
(E)	2357.85	SQ. FT. TOTAL
(F)	2328.60	SQ. FT. TOTAL
(G)	2185.01	SQ. FT. TOTAL
(H)	2131.84	SQ. FT. TOTAL
(J)	1676.66	SQ. FT. TOTAL

**LEGEND**

- COLD WATER LINE
- HOT WATER LINE
- SANITARY SEWER LINE
- - - VENT
- RAL — RAIN WATER LEADER
- HB — HOSE BIBB
- FD — FLOOR DRAIN
- C.O. — FLOOR CLEAN-OUT
- W.C.O. — WALL CLEAN-OUT
- GATE VALVE
- PDI WATER HAMMER ARRESTER SIOUX CHIEF OR EQUAL
- FS — FLOOR SINK
- FD — FLOOR/FUNNEL DRAIN
- 2-WAY CLEAN OUT

**1 ROOF PLAN**  
SCALE: 1/8" = 1'-0"

**REVISIONS BY**

BUILDING DEPT. REV. 5-14-08	MCM
BUILDING DEPT. REV. 7-17-08	MCM

**ARTERBURY ARCHITECTS, INC.**  
A A 26000718  
2400 SAND LAKE ROAD  
LONGWOOD, FLORIDA 32779  
(407) 774-2233  
FAX (407) 774-7377

**ABC LIQUORS, INC.**  
8989 S. ORANGE AVE. - ORLANDO, FLA. 32809  
**ABC STORE NO. 50**  
SAWGRASS MILLS, SUNRISE FLORIDA

**PLUMBING PLAN**

DRAWN: R. CARDONA  
CHECKED: S. RIVERA  
DATE: 5-1-07  
SCALE: AS NOTED  
JOB No: 50  
SHEET