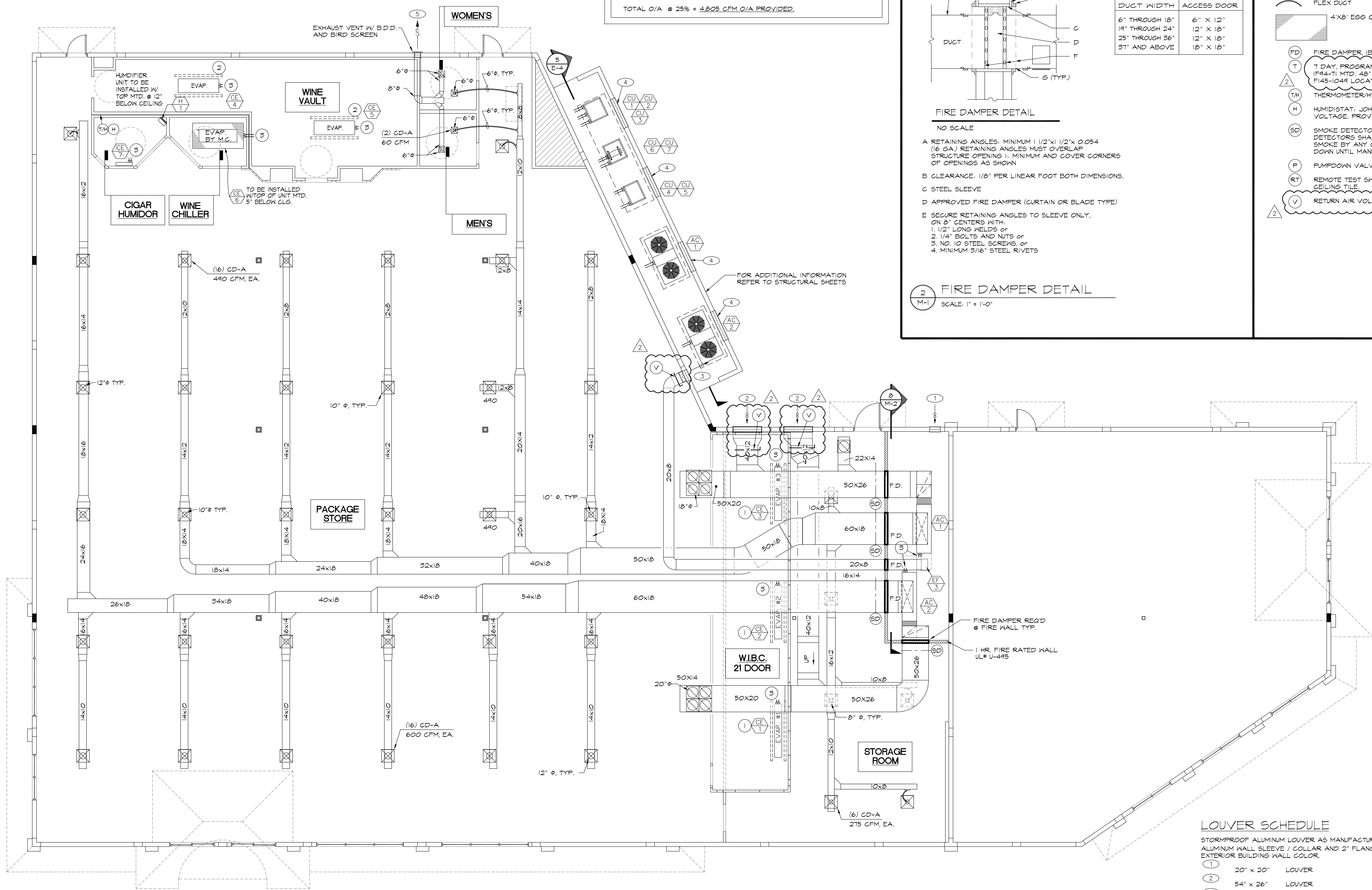


**AIR CALCULATION:**

A/C-1, S/A = 9,620 CFM  
 A/C-2, S/A = 9,600 CFM  
 TOTAL S/A = 19,220 CFM

TOTAL COND. FLR. AREA = 12,694 FT.  
 @ 3 CFM / SQ. FT. = 3,809 CFM MIN. O/A REQ'D.  
 TOTAL O/A @ 25% = 4,805 CFM O/A PROVIDED.



**FIRE DAMPER DETAIL**

NO SCALE

- A RETAINING ANGLES: MINIMUM 1 1/2" X 1/2" X 0.054 (16 GA.) RETAINING ANGLES MUST OVERLAP STRUCTURE OPENING IN MINIMUM AND COVER CORNERS OF OPENINGS AS SHOWN
- B CLEARANCE: 1/8" PER LINEAR FOOT BOTH DIMENSIONS.
- C STEEL SLEEVE
- D APPROVED FIRE DAMPER (CURTAIN OR BLADE TYPE)
- E SECURE RETAINING ANGLES TO SLEEVE ONLY, ON 8" CENTERS WITH:
  1. 1/2" LONG WELDS or
  2. 1/4" BOLTS AND NUTS or
  3. NO. 10 STEEL SCREWS, or
  4. MINIMUM 3/16" STEEL RIVETS

**FIRE DAMPER DETAIL**

SCALE: 1" = 1'-0"

- F SECURE DAMPER TO SLEEVE ON 8" CENTERS WITH:
1. 1/2" LONG WELDS or
  2. 1/4" BOLTS AND NUTS or
  3. NO. 10 STEEL SCREWS, or
  4. MINIMUM 3/16" STEEL RIVETS
- G CONNECT DUCT TO SLEEVE
- H INSTALL ACCESS DOOR OR PANEL

F.D. ACCESS DOOR SIZE	
DUCT WIDTH	ACCESS DOOR
6" THROUGH 18"	6" X 12"
19" THROUGH 24"	12" X 18"
25" THROUGH 36"	12" X 18"
37" AND ABOVE	18" X 18"

**LEGEND:**

- ☒ CD-A: 24"X24" SUPPLY DIFFUSER; METALAIRE SERIES 5800 W/RADIAL DAMPER OR EQ.
- ☒ 24"X24" FILTER BACK RETURN GRILLE WITH 1/2"X1/2" X1/2" CUBES; METALAIRE SERIES CG5 FB OR EQ.
- ☒ CD-B: 12"X12" SUPPLY DIFFUSER; METALAIRE SERIES 5800 W/RADIAL DAMPER OR EQ.
- ☒ EXHAUST GRILLE
- ☒ BOTTOM DUCT TAP W/ MANUAL VOLUME DAMPER
- ☒ A/C DUCT
- ☒ FLEX DUCT
- ☒ 4'X8' EGG GRATE GRILLE, ALUM. CONST. 1/2"X1/2" GRID
- FD FIRE DAMPER, IBD-2 AS MANUF. BY RUSKIN OR EQUAL. UL #555
- T 7 DAY, PROGRAMMABLE THERMOSTAT; WHITE ROGERS MODEL NO. (F94-T) MTD. 48" A.F.F. WITH REMOTE TEMPERATURE SENSOR; NO. F145-1049 LOCATED IN RETURN DUCT, TYPICAL OF 2.
- TH THERMOMETER/HYGROMETER; RADIO SHACK NO. 63-867 OR EQ.
- H HUMIDISTAT; JOHNSON CONTROLS NO. W42AA-1C RANGE 10-90% RH, LOW VOLTAGE, PROVIDE WITH LOCKING COVER
- SD SMOKE DETECTOR; INSTALLED BY M.C. WIRED BY E.G. ALL SMOKE DETECTORS SHALL BE INTERLOCKED SUCH THAT UPON DETECTION OF SMOKE BY ANY ONE DEVICE, ALL RECIRCULATING AIR FANS SHALL SHUT DOWN UNTIL MANUALLY REACTIVATED.
- P PUMPDOWN VALVE
- RT REMOTE TEST SWITCH; TO BE INSTALLED ON UNDERSIDE OF ACOUSTICAL CEILING TILE
- V RETURN AIR VOLUME DAMPER; MUST COMPLY WITH FBC 13-409.1.ABC.3.3

**LOUVER SCHEDULE**

- STORMPROOF ALUMINUM LOUVER AS MANUFACTURED BY RUSKIN OR EQUAL. PROVIDE WITH ALUMINUM WALL SLEEVE / COLLAR AND 2" FLANGE AT INTERIOR. PAINT TO MATCH EXTERIOR BUILDING WALL COLOR.
- 1 20" x 20" LOUVER
  - 2 34" x 26" LOUVER
  - 3 22" x 12" LOUVER
  - 4 60" x 60" LOUVER
  - 5 12" x 12" LOUVER

**KEY NOTES:**

- 1 ANGLE 4"x4"x1/4"x9'-6" L.G. W/ (2) 3/8" DIA. ALL THREAD AND NEOPRENE VIBRATION ISOLATORS, TYP. AT W.I.B.C. EVAPORATORS SEE DETAIL ON SHT. M-2.
- 2 ANGLE 4"x4"x1/4"x8'-0" L.G. W/ (2) 3/8" DIA. ALL THREAD AND NEOPRENE VIBRATION ISOLATORS, TYP. AT WINE VAULT EVAPORATORS SEE DETAIL ON SHT. M-2
- 3 ROUTE REFRIGERANT LINES TO REMOTE PAD MOUNTED CONDENSING UNITS AS REQ'D.

**MECHANICAL PLAN**  
 SCALE: 1/8" = 1'-0"

REVISIONS	BY
OWNER REVISION 5-14-08	MCM
BUILDING DEPT. REV 7-17-08	MCM

**ARTERBURY ARCHITECTS, INC.**  
 A A 2 6 0 0 7 1 8  
 2400 SAND LAKE ROAD  
 LONGWOOD, FLORIDA 32779  
 (407) 774-2233  
 FAX (407) 774-7377

**ABC LIQUORS, INC.**  
 8989 S. ORANGE AVE. - ORLANDO, FLA. 32809  
**ABC STORE NO. 50**  
 SAWGRASS MILLS, SUNRISE, FLORIDA

DRAWN: R. CARDONA  
 CHECKED: S. RIVERA  
 DATE: 5-1-07  
 SCALE: AS NOTED  
 JOB No: 50  
 SHEET

M-1