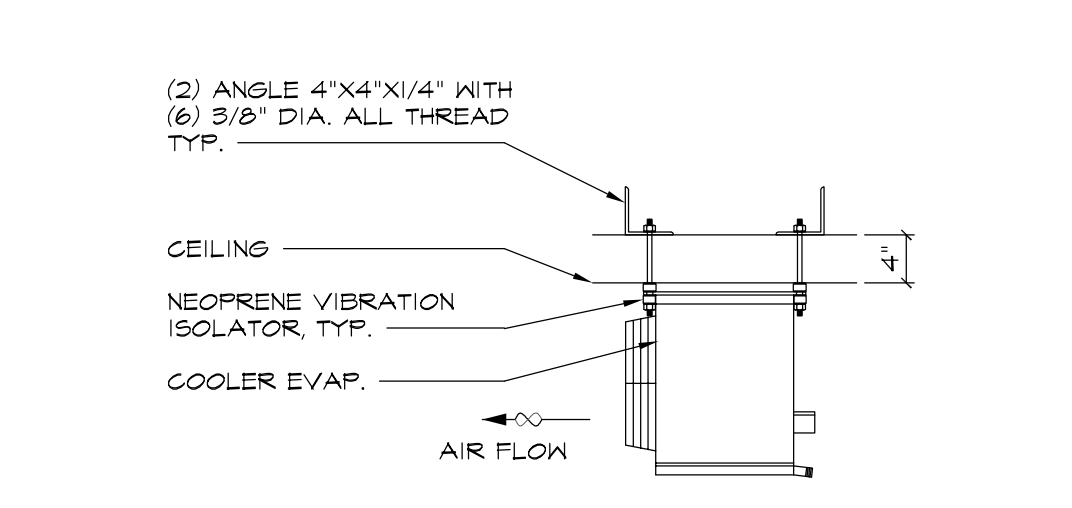


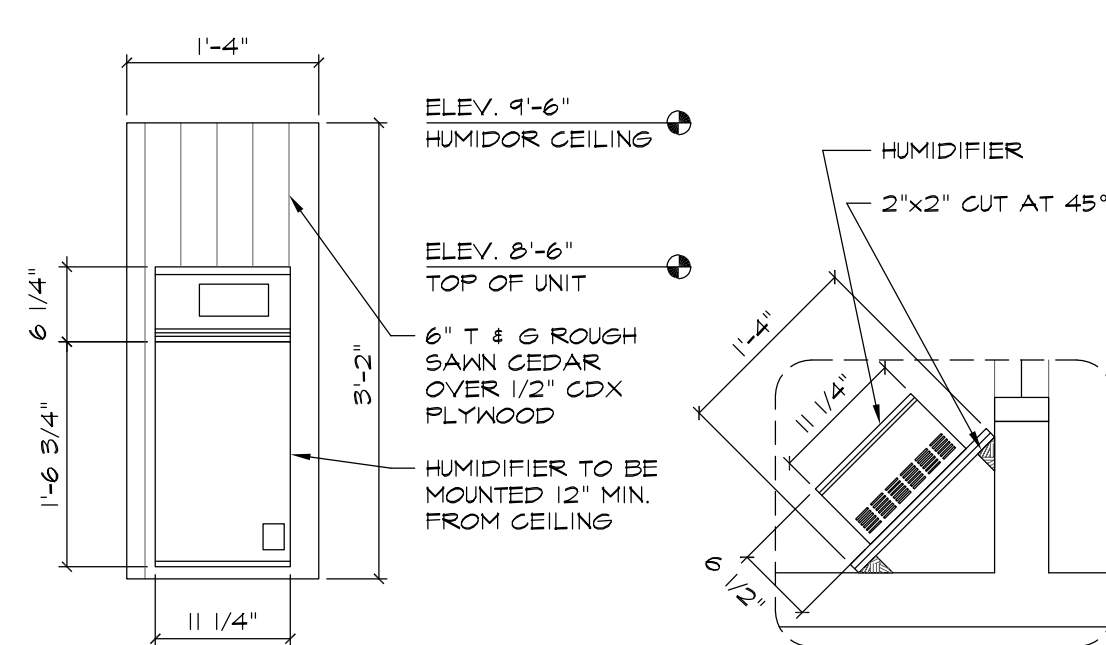
NOTES:
1. REFER TO STRUCTURAL DWG'S. FOR ADDITIONAL INFO. TYP.

1 VAULT EVAP. INSTALLATION DETAIL
SCALE: 3/4" = 1'-0"

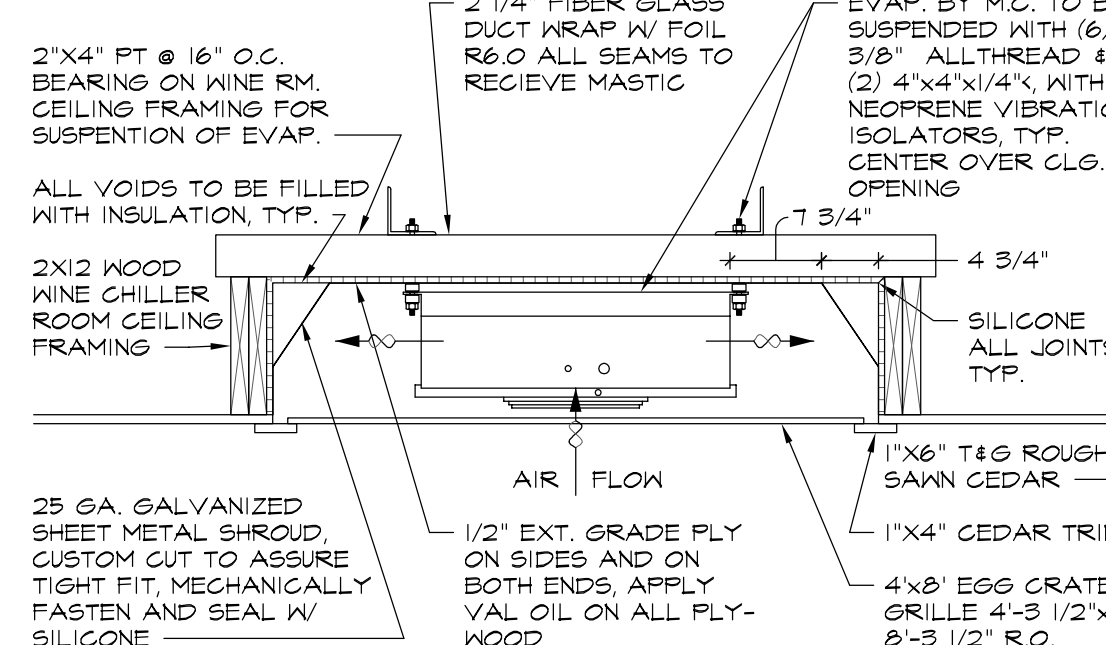


NOTES:
1. REFER TO STRUCTURAL DWG'S. FOR ADDITIONAL INFO. TYP.

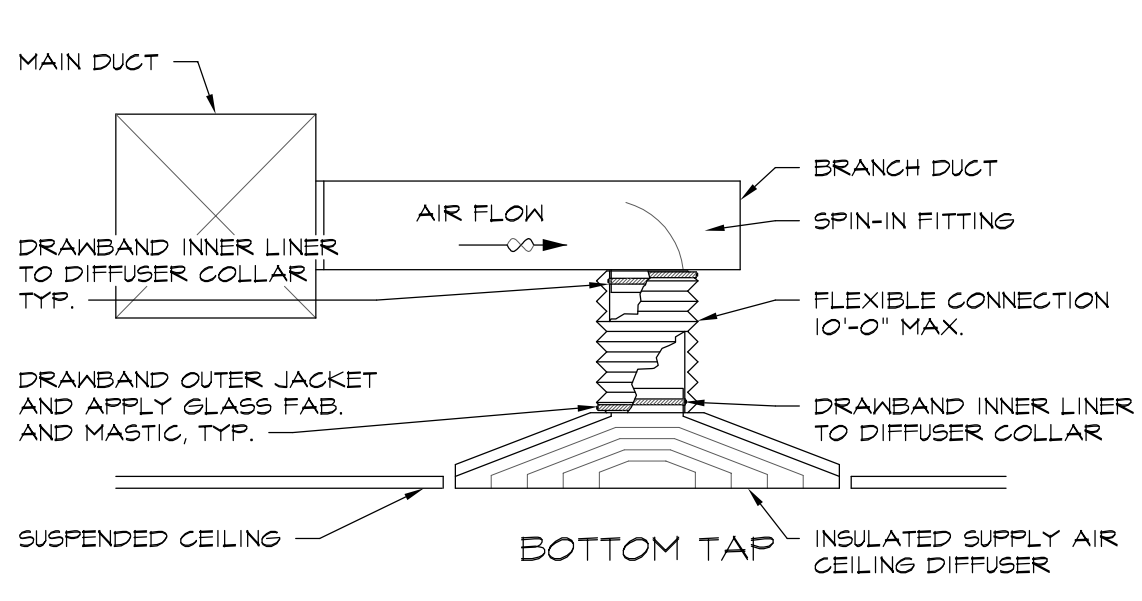
2 W.I.B.C. EVAP. INSTALLATION DETAIL
SCALE: 3/4" = 1'-0"



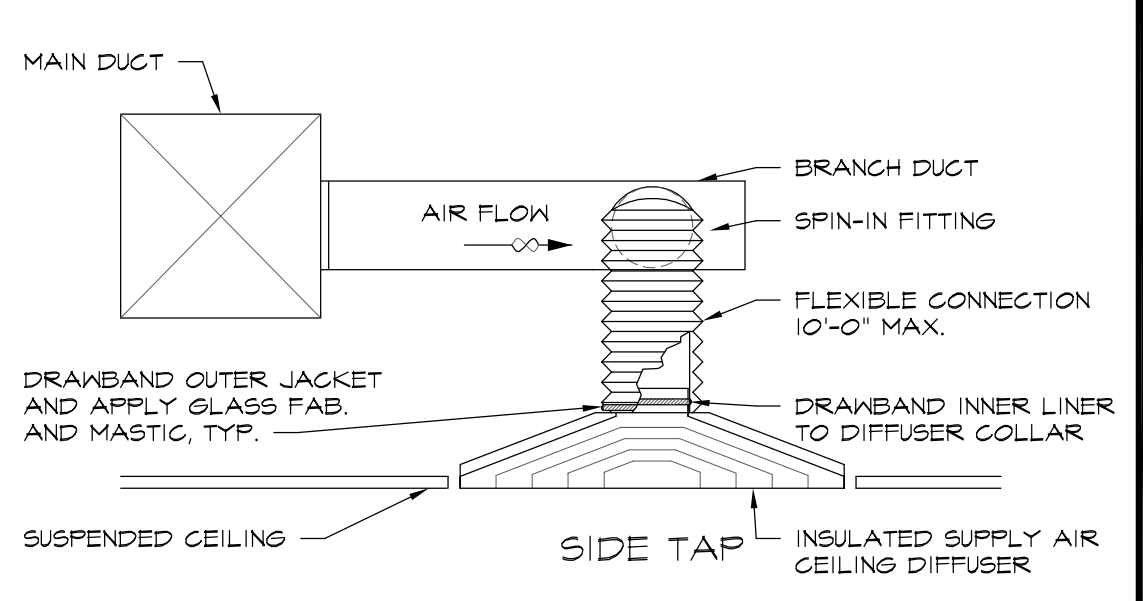
3 HUMIDIFIER DETAIL
SCALE: 3/4" = 1'-0"



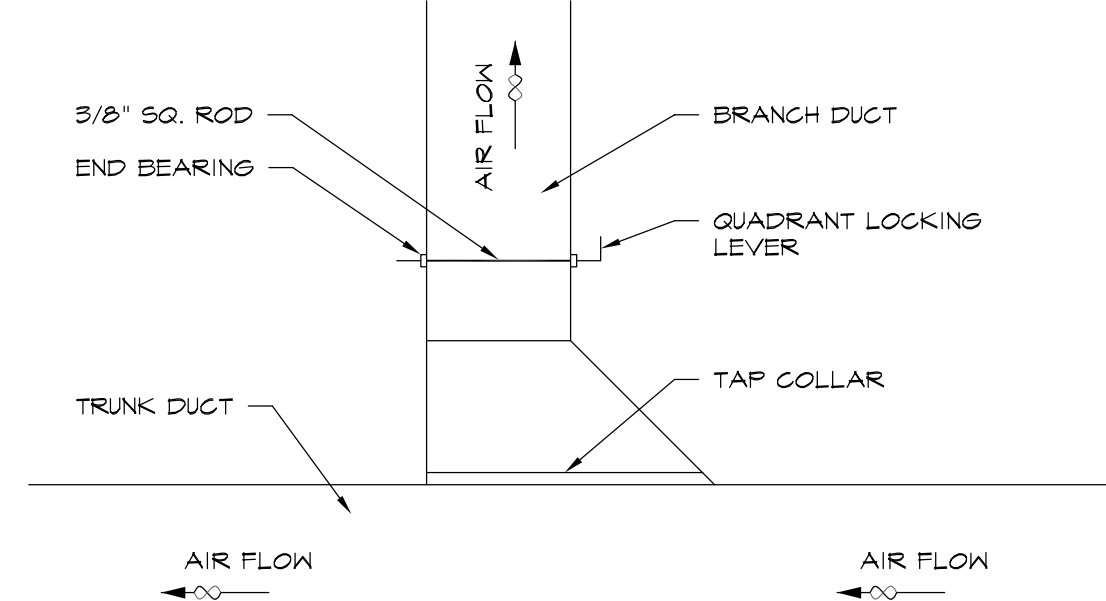
4 CHILLER EVAP. SECTION
SCALE: 3/4" = 1'-0"



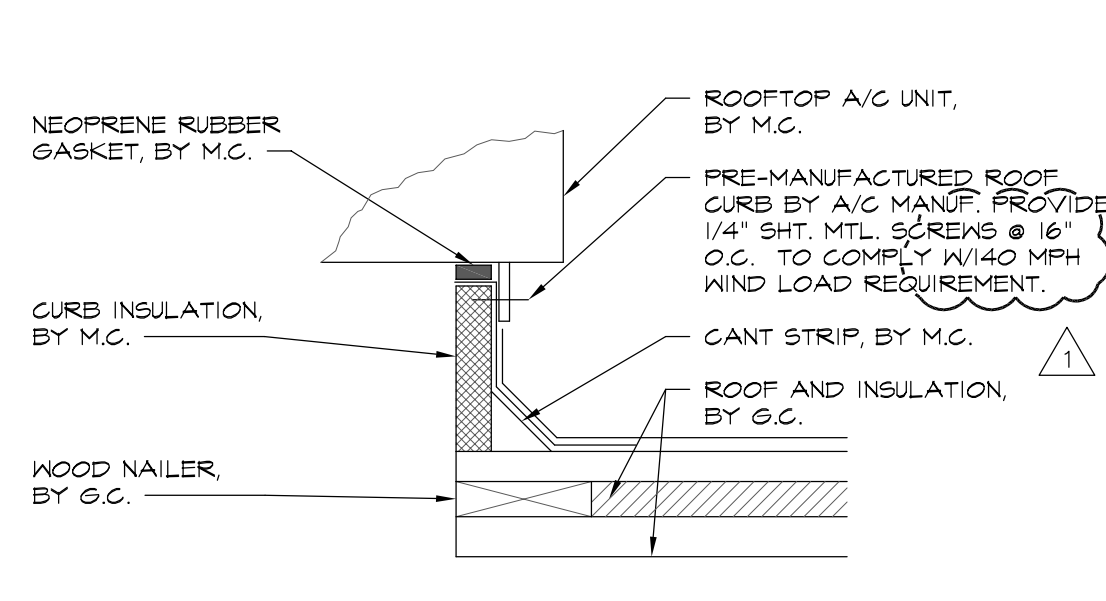
5 BRANCH DUCT TAPS
SCALE: 3/4" = 1'-0"



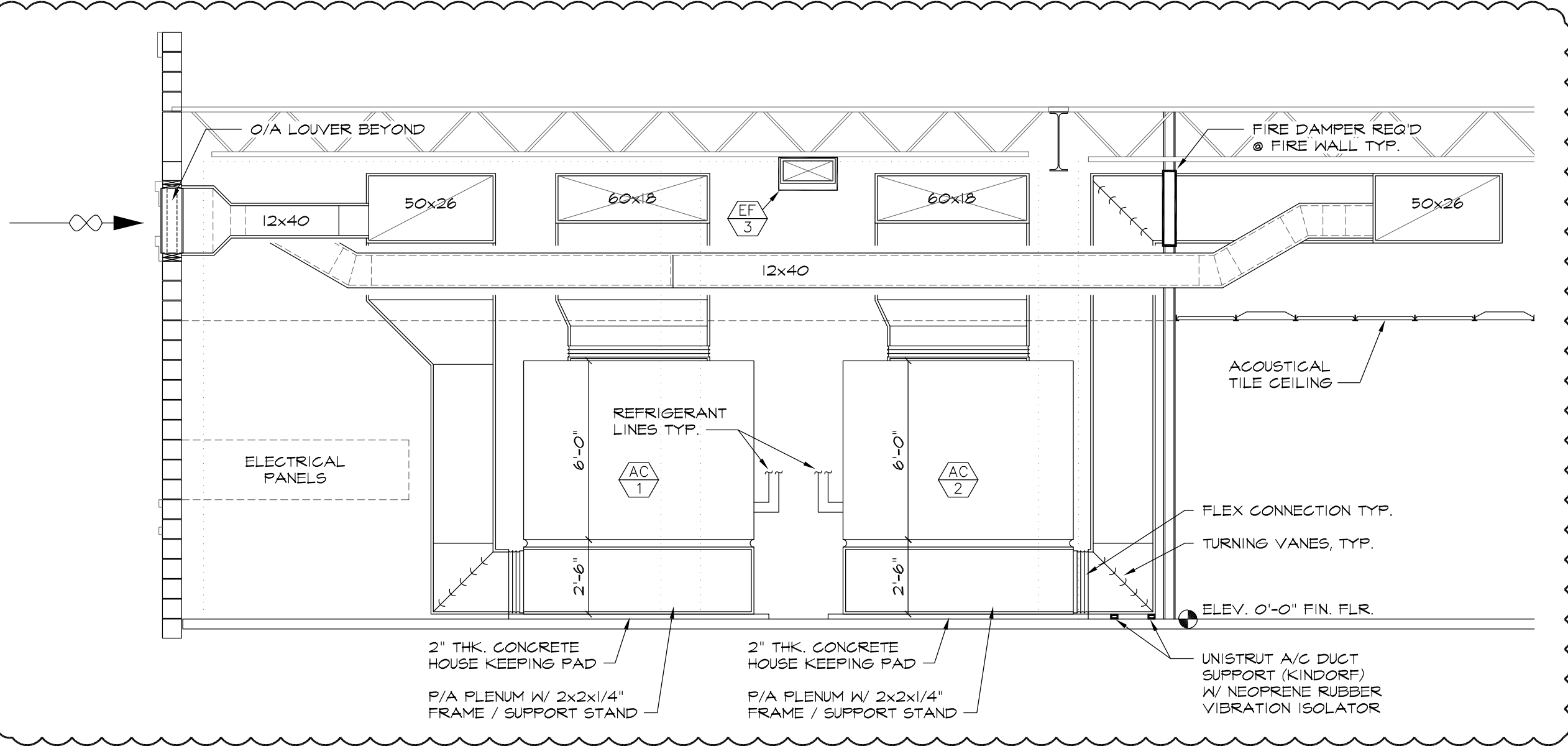
6 SUPPLY AIR DUCT BRANCH DETAIL
SCALE: 3/4" = 1'-0"



6 SUPPLY AIR DUCT BRANCH DETAIL
SCALE: 3/4" = 1'-0"



7 AC ROOF CURB DETAIL
SCALE: 3/4" = 1'-0"



8 MECHANICAL ROOM ELEVATION
SCALE: 1/4" = 1'

GENERAL MECHANICAL NOTES:

- REFER TO ARCHITECTURAL REFLECTED CEILING PLAN FOR EXACT LOCATIONS OF AIR DISTRIBUTION DEVICES.
- SIZE AND LOCATION OF EQUIPMENT INSTALLED UNDER DIVISION 15 - MECHANICAL SHALL BE COORDINATED WITH ALL OTHER TRADES.
- ALL THERMOSTATS SHALL BE MOUNTED 5'-0" ABOVE FINISHED FLOOR. THERMOSTATS SHALL BE FURNISHED WITH A REMOTE TEMPERATURE SENSOR. VOLTAGE SHALL BE 24 VOLT UNLESS OTHERWISE INDICATED.
- DISCONNECT SWITCHES REQUIRED FOR THE MECHANICAL EQUIPMENT SHALL BE PROVIDED AND INSTALLED BY DIVISION 16 - ELECTRICAL.
- ALL DUCTWORK SHALL BE CONSTRUCTED AND INSTALLED IN ACCORDANCE WITH NFPA 90A AND 90B.
- ALL 90° DUCT BENDS FROM VERTICAL TO HORIZONTAL AND ANGLED TURNS OF DUCTWORK SHALL HAVE TURNING VANES INSTALLED.
- CONTRACTOR TO PROVIDE AND INSTALL 1'x 3'x 22GA. FORMED SHT. MTL. CHANNEL REINFORCEMENT MIN. 24" O.C. PER N.I.A.M.A. STANDARDS FOR FIBERGLASS DUCT CONSTRUCTION OF OVER 1/2" THRU 1" I.G.S. POSITIVE PRESSURE FOR DUCTS 3" - 36" INSIDE DIM.
- ALL CONTROL WIRING AND HARDWARE TO COMPLETE THE HVAC CONTROL SYSTEM SHALL BE FURNISHED AND INSTALLED UNDER DIVISION 15 - MECHANICAL OF THESE CONTRACT DOCUMENTS.
- EXHAUST FAN OUTLETS SHALL BE INSTALLED A MINIMUM OF 10'-0" FROM FRESH AIR INTAKES OR EXTERIOR DOORS.
- ALL FIBERGLASS DUCT BOARD JOINTS, SEAMS AND CONNECTIONS SHALL BE CONSTRUCTED IN ACCORDANCE W/ SMAGNA FIBERGLASS DUCT CONSTRUCTION STANDARDS, LATEST EDITION. ALL DUCTWORK SHALL BE CLASS 1, UL-181 AND ALL GLOSURES SHALL MAINTAIN THIS RATING. CONTRACTOR TO PROVIDE AND INSTALL 1'x 3'x 22GA. FORMED SHT. MTL. CHANNEL REINFORCEMENT MIN. 48" O.C. PER N.I.A.M.A. STANDARDS FOR FIBERGLASS DUCT CONSTRUCTION OF OVER 1/2" THRU 1" I.G.S. POSITIVE PRESSURE FOR DUCTS 3" - 30" INSIDE DIM.
- DUCT WORK SHALL BE 1 1/2" TYPE 800 FIBERGLASS DUCT, R-6.5 AS MANUF. BY OWENS CORNING OR EQUAL. FLEXIBLE DUCT CONNECTIONS R-6.0
- ALL DIFFUSERS SHALL BE 4-WAY THROW UNLESS NOTED OTHERWISE BY DIR. ARROW.
- EXHAUST DUCTWORK SHALL BE UNINSULATED GALVANIZED STEEL.
- ALL CONDENSATE DRAIN LINES SHALL BE INSTALLED WITH A 'P' TRAP AT THE UNIT WITH A MINIMUM DEPTH OF 2'.
- ALL FLEXIBLE DUCT CONNECTIONS TO TRUNK DUCTS SHALL BE MADE WITH GALVANIZED STEEL CONICAL SPIN-IN FITTINGS WITH DAMPER AND LOCKING QUADRANT. DUCT CONNECTION TO THE SPIN-IN OR AIR DISTRIBUTION DEVICE SHALL BE MADE WITH STAINLESS STEEL BANDS OR PANDUIT STRAPS. THE USE OF TAPE TO SECURE FLEXIBLE DUCT TO SPIN-INS OR AIR DISTRIBUTION DEVICES IS STRICTLY PROHIBITED.
- ALL CEILING DIFFUSERS AND GRILLES SHALL BE INSULATED.
- ALL FLEXIBLE DUCT SHALL BE SUPPORTED WITH MIN. 1 1/2" x 22 GA. MTL. STRAPS.
- ALL FIBERGLASS DUCTWORK SHALL BE SEALED WITH GLASS FAB. AND MASTIC.
- ALL RIGID DUCTWORK SHALL BE SUPPORTED WITH 22 GA. 5X2 CHANNEL, MAX. 8'-0" O.C. W/ 1/2" DIA. WIRE PER N.I.A.M.A. STANDARDS FOR DUCTWORK.
- FURNISH AND INSTALL COMPLETE MECHANICAL SYSTEM AS INDICATED ON PLANS.
- DUCTWORK INSIDE THE BUILDING SHALL BE FIBERGLASS CONSTRUCTION, INSTALLED IN ACCORDANCE WITH SMAGNA MANUAL FOR FIBERGLASS DUCTWORK.
- FURNISH AND INSTALL AIR SCOOPS, EXTRACTORS, AND SPLITTER DAMPERS WITH OPERATORS AND LOCKING QUADRANTS AT SPLITTS, BRANCH CONNECTIONS AND REGISTER OR DIFFUSER CONNECTIONS TO DUCTWORK AND AS OTHERWISE INDICATED ON PLANS.
- DIMENSIONS ON PLANS INDICATE FRESH AIR FLOW AREA, INCREASE DUCT DIMENSIONS 2" WHERE INSULATED INTERNALLY.
- AIR DISTRIBUTION DEVICES:
 - FURNISH AND INSTALL ALL AIR DISTRIBUTION DEVICES AND ACCESSORIES AS INDICATED ON DRAWINGS.
- MECHANICAL CONTRACTOR TO CONNECT FIRESTAT (SHOWN ON DRAWINGS IN RETURN AIR DUCT) TO AUTOMATIC SHUTDOWN OF A/C SYSTEM PER MECHANICAL CODE REQUIREMENTS. M.C. TO INSTALL FRESH AIR MAKE UP W/ DAMPER.
- SMOKE DETECTOR FOR USE IN AIR DISTRIBUTION SYSTEMS SHALL BE LOCATED DOWNSTREAM OF AIR FILTERS AND AHEAD OF ANY BRANCH CONNECTIONS IN AIR SUPPLY SYSTEMS OF GREATER THAN 2000 CFM CAPACITY PER NFPA 90A.

EQUIPMENT SCHEDULE:

- NOTE: ALL MECHANICAL EQUIPMENT TO BE PROVIDED BY OWNER AND INSTALLED BY CONTRACTOR.
- AC 1/2 NEW 20 TON A/C UNIT W/ ELECTRIC HEAT; TRANE MODEL NO. TH240B COND. UNIT W/ TH240B AIR HANDLER, ARI RATED COOLING CAPACITY OF 246.0 MBH @ 95° AMBIENT, 80° ENT. D.B., 67° ENT. W.B., 4.3 E.E.R., 14.96 KW/ELECT. HT., 208V / 3Ø SINGLE POINT POWER CONNECTION, PROVIDE WITH FACTORY ROOF CURB, 25% O.A. DAMPER W/ BIRD SCREEN, PROVIDE W/ 2 STAGE HEATER MODEL NO. BAYTRM56A.
 - CE 1/2 COOLER EVAPORATOR; RUSSELL MODEL NO. AA56-245B, 5 AMPS @ 230 V / 1Ø LOCATED IN WALK IN BEVERAGE COOLERS, PROVIDE WITH 3/8" ALL THREAD & NEOPRENE VIBRATION ISOLATORS, 4 PLACES EA. UNIT, PUMP DOWN VALVES & T-STATS INSTALLED @ EACH EVAP. TO TURN OFF UNITS ON ROOF. PROVIDE W/ THERMOSTAT. JOHNSON CONTROLS MFG# A18BCC-2.
 - CE 1/2 REMOTE CONDENSING UNIT; RUSSELL MODEL NO. MIH00H22, 14.2 AMPS @ 208 / 230 V / 3Ø UNIT TO BE MTD. ON ROOF STAND, REFER TO STRUCTURAL DWG'S. AND ROOF PLAN FOR EXACT LOCATION AND ADDITIONAL INFORMATION.
 - CE 1/2 CHILLER EVAPORATOR; RUSSELL MODEL NO. GTA-46-140, 2.2 AMPS @ 230 V / 1Ø LOCATED IN NINE CHILLER AND NINE VAULT, PROVIDE WITH 3/8" ALL THREAD & NEOPRENE VIBRATION ISOLATORS, 4 PLACES EA. UNIT, PUMP DOWN VALVES & T-STATS INSTALLED AT EACH EVAP. TO TURN OFF UNITS ON ROOF. PROVIDE W/ THERMOSTAT. JOHNSON CONTROLS MFG# A18BCC-2.
 - CE 1/2 REMOTE CONDENSING UNIT; RUSSELL MODEL NO. MIH200H22, 11.7 AMPS @ 208 / 230 V / 3Ø UNIT TO BE MTD. ON ROOF STAND, REFER TO STRUCT. DWG'S. AND ROOF PLAN FOR EXACT LOCATION AND ADDITIONAL INFO.
 - CE 1/2 FUJITSU DUCTLESS SPLIT SYSTEM A/C UNIT MODEL NO. ASU-12, DUCTLESS EVAPORATOR 208/230V, 300 CFM, INSTALLED PER MANUF. RECOMMENDATIONS.
 - CE 1/2 FUJITSU CONDENSER MODEL NO. AOU-12, 208/230V, 20 AMP W/ EVAPORATOR, COOLING CAP. 11.5 MBH, EER 12.5, 12 MCA.
 - H 1 HUMIDIFIER; NORTEC MODEL "RESDELUX" W/BLOWER PACK, LOCATED IN GIGAR HUMIDOR TO BE INSTALLED BY M.C. ALL ASSOC. PIPING BY P.C.
 - EF 1/2 EXHAUST FAN; BROAN MODEL NO. 4C701, 150 CFM, 120V 1-PH. FOR TOILET ROOM VENTILATION.
 - EF 1/2 CEILING VENTILATOR; EOK BLOWER ROOM VENTILATION BROAN MODEL # L100 (GRAINER #4TR60) CFM 607, VOLTAGE 120, 60 HZ, SINGLE PHASE, FULL LOAD AMPS 2.9, MOUNTED TO JOIST, INCLUDE AUTOMATIC BACKDRAFT DAMPER, PROVIDE WITH REMOTE THERMOSTAT SET TO ACTIVATE FAN WHEN TEMP. EXCEEDS 90° F. PROVIDE LOCAL DISCONNECT. THERMOSTAT: SUNNE MFG# TF15-004.

REVISIONS		BY
BUILDING DEPT.	REV. 5-14-08	MCM

ARTERBURY ARCHITECTS, INC.
A 26000718
2400 SAND LAKE ROAD
LONGWOOD, FLORIDA 32779
(407) 774-2233
FAX (407) 774-7377

ABC LIQUORS, INC.
8989 S. ORANGE AVE. - ORLANDO, FLA. 32809
ABC STORE NO. 50
SAWGRASS MILLS, SUNRISE FLORIDA

DRAWN:	R. CARDONA
CHECKED:	S. RIVERA
DATE:	5-1-07
SCALE:	AS NOTED
JOB No:	50
SHEET	

M-2