

'MDP' PANEL SCHEDULE

PANEL ID: MDP		PANEL TYPE: SQ. D" I-LINE		MOUNTING: SURFACE		
ELECT. DATA: 208-120V, 3 PHASE, 4 WIRE, 1,000 AMPS, 50K AIC		MAINS: 1,000/3 BREAKER /W SHUNT TRIP		LOCATION: STOCK ROOM		
CIR. NO.	POLE	AMP TRIP C.B.	LOAD			IDENTIFICATION
			'A' AMP	'B' AMP	'C' AMP	
1	3	100		87		A/C COND. UNIT #8
3	3	100		87		3#1, #8G, 1-1/2" C
5	3	100		87		
7	3	80		79		A/C AIR HANDLER #1
9	3	80		79		3#1, #8G, 1-1/2" C
11	3	80		79		
13						
15						
17						
19	3	300		122		PANEL - A
21	3	300		117		PANEL - A
23	3	300		110		PANEL - A
25	3	200		117		PANEL - C
27	3	200		115		PANEL - C
29	3	200		104		PANEL - C
31						
33						
35	2	40		30		TANKLESS WATER HTR. STORAGE ROOM 2#B, #10G, 3/4" C
37	4	40		30		TANKLESS WATER HTR. STORAGE ROOM 2#B, #10G, 3/4" C
39	2	40		30		
41				30		
			435	428	440	SUBTOTAL AMPS
			418	420	403	SUBTOTAL (AMPS)

A	B	C	TOTAL AMPS
853	848	843	
102	102	101	TOTAL KVA

'A' PANEL SCHEDULE

PANEL ID: 'A' LIGHTING		PANEL TYPE: SQ. D-NOOD		MOUNTING: SURFACE		
ELECT. DATA: 208-120V, 3 PHASE, 4 WIRE, 400 AMPS, 50K AIC SERIES RATED		MAINS: MLO		LOCATION: STOCK ROOM		
CIR. NO.	POLE	AMP TRIP C.B.	LOAD			IDENTIFICATION
			'A' AMP	'B' AMP	'C' AMP	
1	1	20	#12	1/2"	11	LIGHTS (SALES)
3	1	20	#12	1/2"	10	LIGHTS (SALES)
5	1	20	#12	1/2"	11	LIGHTS (SALES)
7	1	20	#12	1/2"	10	LIGHTS (SALES)
9	1	20	#12	1/2"	11	LIGHTS (SALES)
11	1	20	#12	1/2"	11	LIGHTS (SALES)
13	1	20	#12	1/2"	11	LIGHTS (SALES)
15	1	20	#12	1/2"	8	LIGHTS (SALES)
17	1	20	#12	1/2"	6	LIGHTS (SALES)
19	1	20	#12	1/2"	5	LIGHTS (SALES)
21	1	20	#12	1/2"	2	LIGHTS (CHILLER)
23	1	20	#12	1/2"	2	LIGHTS (HUMIDOR)
25	1	20	#12	1/2"	10	LIGHTS (WINE VAULT)
27	1	20	#12	1/2"	2	VAULT LIGHTS (COACH/DISPLAY)
29	1	20	#12	1/2"	12	LIGHTS (STORAGE)
31	1	20	#12	1/2"	12	LIGHTS (STORAGE)
33	1	20	#12	1/2"	12	LIGHTS (STORAGE)
35	1	20	#12	1/2"	9	LIGHTS (ELECT.)
37	1	20	#12	1/2"	4	RESTROOM LIGHTS
39	1	20	#12	1/2"	13	WBC LTS DOOR
41	1	20	#12	1/2"	10	WBC LTS DOOR
			63	58	61	SUBTOTAL (AMPS)
			59	59	49	SUBTOTAL (AMPS)

A	B	C	TOTAL AMPS
122	117	110	
15	14	13	TOTAL KVA

NOTE: RUN #12 MINIMUM WIRE SIZE. INCREASE TO #10 WHEN HOMERUN IS LONGER THAN 50 FEET AND #8 WHEN HOMERUN IS LONGER THAN 100 FEET. PROVIDE #12 MINIMUM SIZE EQUIPMENT GROUNDING CONDUCTOR IN EACH RACEWAY. INCREASE TO #10 E. G. C. WHEN RUN WITH #10 PHASE CONDUCTORS.

'B' PANEL SCHEDULE

PANEL ID: 'B' - POWER		PANEL TYPE: SQ. D-NOOD		MOUNTING: SURFACE		
ELECT. DATA: 208-120V, 3 PHASE, 4 WIRE, 400 AMPS, 50K AIC SERIES RATED		MAINS: MLO		LOCATION: STOCK ROOM		
CIR. NO.	POLE	AMP TRIP C.B.	LOAD			IDENTIFICATION
			'A' AMP	'B' AMP	'C' AMP	
1	1	20	#12	1/2"	8	P.O.S. REGISTER
3	1	20	#12	1/2"	18	GEN. P.O.S. RECEPT.
5	1	20	#12	1/2"	3	TIDEL SAFE
7	1	20	#12	1/2"	12	ICE MERCH.
9	1	20	#12	1/2"	6	FRONT DOOR GFI
11	1	20	#12	1/2"	12	FRONT DOOR
13	1	30	#10	1/2"	25	HAND DRYERS
15	1	20	#12	1/2"	5	FOUNTAIN GFI
17	1	20	#12	1/2"	9	HUMIDOR NEON
19	1	20	#12	1/2"	6	CHILLER NEON
21	1	20	#12	1/2"	9	OUTSIDE GFI (N.W.)
23	1	20	#12	1/2"	6	OUTSIDE GFI (N.E.)
25	1	20	#12	1/2"	9	HUMIDOR/CHILLER RECEPT.
27	2	20	#12	1/2"	10	HUMIDIFIER
29	2	20	#12	1/2"	10	HUMIDIFIER
31	1	20	#12	1/2"	9	WINE VAULT GFI
33	1	20	#12	1/2"	12	3 DOOR COOLER
35	1	30	#10	1/2"	20	ELECT. WATER HEATER LADIES RESTROOM ELECT. WATER HEATER MEN'S RESTROOM
37	1	30	#10	1/2"	20	
39	2	20	#12	1/2"	12	ICE CUBER
41	2	20	#12	1/2"	12	ICE CUBER
			89	72	72	SUBTOTAL (AMPS)
			67	73	65	SUBTOTAL (AMPS)

A	B	C	TOTAL AMPS
156	145	137	
19	17	16	TOTAL KVA

NOTE: RUN #12 MINIMUM WIRE SIZE. INCREASE TO #10 WHEN HOMERUN IS LONGER THAN 50 FEET AND #8 WHEN HOMERUN IS LONGER THAN 100 FEET. PROVIDE #12 MINIMUM SIZE EQUIPMENT GROUNDING CONDUCTOR IN EACH RACEWAY. INCREASE TO #10 E. G. C. WHEN RUN WITH #10 PHASE CONDUCTORS.

'C' PANEL SCHEDULE

PANEL ID: 'C' EQUIPMENT		PANEL TYPE: SQ. D-NOOD		MOUNTING: SURFACE		
ELECT. DATA: 208-120V, 3 PHASE, 4 WIRE, 150 AMPS, 50K AIC SERIES RATED		MAINS: MLO		LOCATION: STOCK ROOM		
CIR. NO.	POLE	AMP TRIP C.B.	LOAD			IDENTIFICATION
			'A' AMP	'B' AMP	'C' AMP	
1	1	15	#12	1/2"	8	EVAP. - 1 (WBC)
3	1	15	#12	1/2"	8	EVAP. - 3 (WBC)
5	1	15	#12	1/2"	8	EVAP. - 5 (WINE VLT)
7	3	30	#10	1/2"	18	COND. - 1 (WBC)
9	3	30	#10	1/2"	18	COND. - 1 (WBC)
11	3	30	#10	1/2"	18	COND. - 1 (WBC)
13	3	30	#10	1/2"	18	COND. - 3 (WBC)
15	3	30	#10	1/2"	18	COND. - 3 (WBC)
17	3	30	#10	1/2"	18	COND. - 3 (WBC)
19	3	30	#10	1/2"	13	COND. - 5 (WINE VLT)
21	3	30	#10	1/2"	13	COND. - 5 (WINE VLT)
23	3	30	#10	1/2"	13	COND. - 5 (WINE VLT)
25	2	30	#10	1/2"	11	COND. - 7 (HUMIDOR)
27	3	30	#10	1/2"	11	COND. - 7 (HUMIDOR)
29						
			68	68	57	SUBTOTAL (AMPS)
			49	47	47	SUBTOTAL (AMPS)

A	B	C	TOTAL AMPS
117	115	104	
14	14	13	TOTAL KVA

NOTE: RUN #12 MINIMUM WIRE SIZE. INCREASE TO #10 WHEN HOMERUN IS LONGER THAN 50 FEET AND #8 WHEN HOMERUN IS LONGER THAN 100 FEET. PROVIDE #12 MINIMUM SIZE EQUIPMENT GROUNDING CONDUCTOR IN EACH RACEWAY. INCREASE TO #10 E. G. C. WHEN RUN WITH #10 PHASE CONDUCTORS.

'D' PANEL SCHEDULE

PANEL ID: 'D' OUTSIDE LIGHTING		PANEL TYPE: SQ. D-NOOD		MOUNTING: SURFACE		
ELECT. DATA: 208-120V, 3 PHASE, 4 WIRE, 150 AMPS, 50K AIC SERIES RATED		MAINS: MLO		LOCATION: STOCK ROOM		
CIR. NO.	POLE	AMP TRIP C.B.	LOAD			IDENTIFICATION
			'A' AMP	'B' AMP	'C' AMP	
1	2	20	#10	1/2"	9	FRONT WALL SIGN
3	2	20	#10	1/2"	9	FRONT WALL SIGN
5						
7						
9	1	20	#10	1/2"	14	LSI LIGHTING (S.W.)
11	1	20	#10	1/2"	16	LSI LIGHTING (S.E.)
13	1	20	#10	1/2"	13	LSI LIGHTING (E.)
15	1	20	#10	1/2"	14	LSI LIGHTING (E.)
17	1	20	#10	1/2"	14	LSI LIGHTING (N.)
19						
21						
23						
25	1	20	#10	1/2"	6	WALL/SOFFIT (S.W.)
27	1	20	#10	1/2"	4	WALL PACK (W.)
29	1	20	#10	1/2"	6	WALL/SOFFIT (N.W.)
31						
33	1	20	#12	1"	9	SOFFIT LIGHTS (N.W.)
35	1	20	#12	1"	8	SOFFIT LIGHTS (N.E.)
37	1	20	#12	1"	8	SOFFIT LIGHTS (E.)
39	1	20	#12	1"	8	SOFFIT LIGHTS (S.E.)
41	1	20	#12	1"	8	SOFFIT LIGHTS (S.)
			36	49	52	SUBTOTAL (AMPS)
			60	60	48	SUBTOTAL (AMPS)

A	B	C	TOTAL AMPS
96	109	100	
12	13	12	TOTAL KVA

NOTE: RUN #12 MINIMUM WIRE SIZE. INCREASE TO #10 WHEN HOMERUN IS LONGER THAN 50 FEET AND #8 WHEN HOMERUN IS LONGER THAN 100 FEET. PROVIDE #12 MINIMUM SIZE EQUIPMENT GROUNDING CONDUCTOR IN EACH RACEWAY. INCREASE TO #10 E. G. C. WHEN RUN WITH #10 PHASE CONDUCTORS.

'MDP-TS' PANEL SCHEDULE

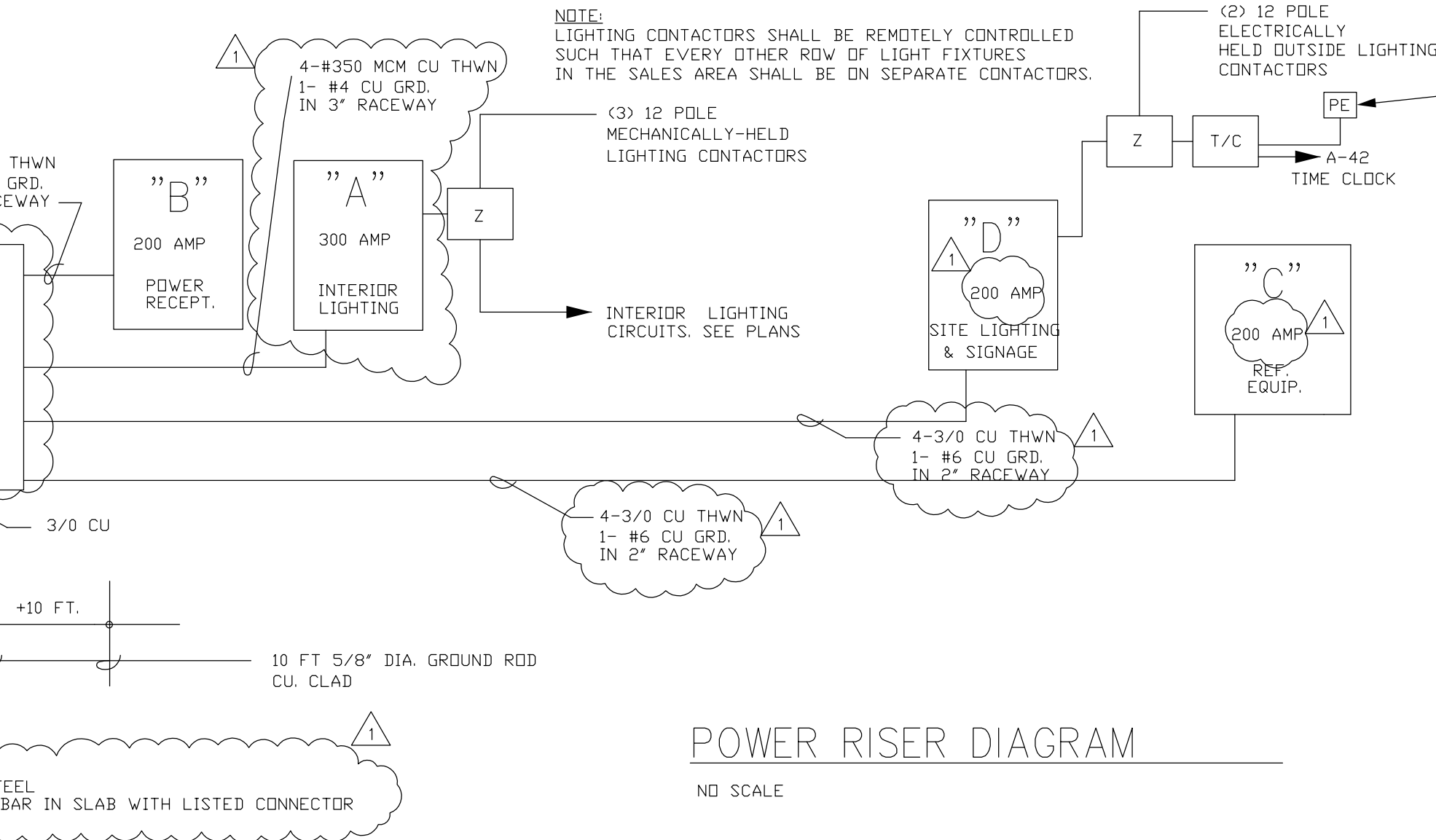
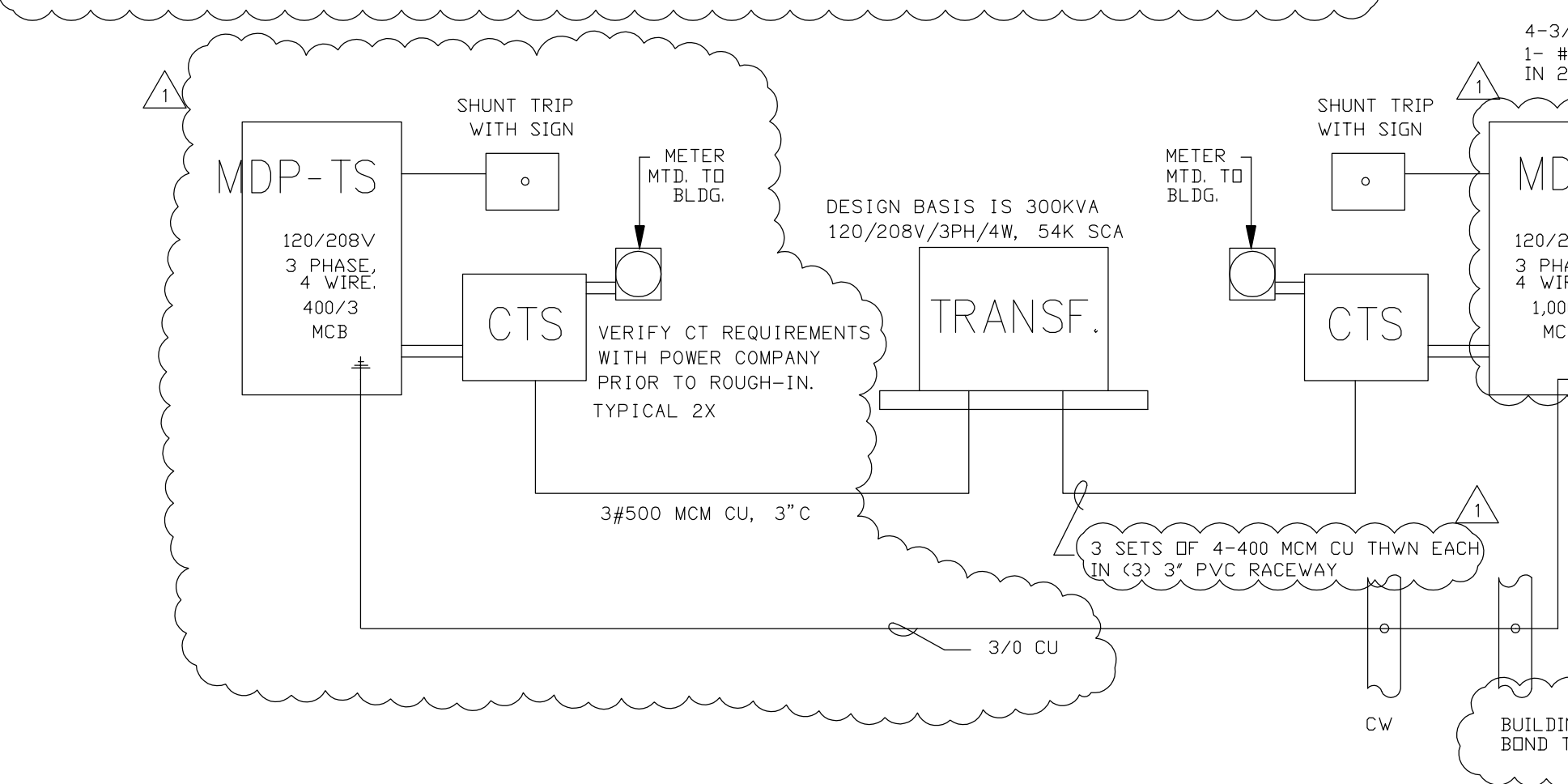
PANEL ID: MDP		PANEL TYPE: SQ. D" I-LINE		MOUNTING: SURFACE		
ELECT. DATA: 208-120V, 3 PHASE, 4 WIRE, 400 AMPS, 50K AIC		MAINS: 400/3 BREAKER /W SHUNT TRIP		LOCATION: STOCK ROOM		
CIR. NO.	POLE	AMP TRIP C.B.	LOAD			IDENTIFICATION
			'A' AMP	'B' AMP	'C' AMP	
1						
2	3					POLE LIGHT (N.)
3						POLE LIGHT (N.)
4	3					POLE LIGHT (N.E.)
5						POLE LIGHT (N.E.)
6	3					POLE LIGHT (E.)
7						POLE LIGHT (E.)
8	3					POLE LIGHT (S.)
9						POLE LIGHT (S.)
10	3					POLE LIGHT (W.)
11						POLE LIGHT (W.)
12	3					POLE LIGHT (S.W.)
13						POLE LIGHT (W.)
14						POLE LIGHT (W.)
15						
16						
17						
18						
19						
20						
21						
22						
23						
24						
25						
26						
27						
28						
29						
30						
31						
32						
33						
34						
35						
36						
37	1	20	#12	1/2"	10	TENANT LIGHTS
38	1	20	#12	1/2"	5	NIGHT LIGHTS
39	1	20	#12	1/2"	12	FRONT DOOR
40						
41	1	20	#12	1/2"	12	FRONT DOOR
42						
			10	5	12	SUBTOTAL AMPS
						SUBTOTAL (AMPS)

A	B	C	TOTAL AMPS
10	5	12	
2	1	2	TOTAL KVA

NOTE: RUN #12 MINIMUM WIRE SIZE. INCREASE TO #10 WHEN HOMERUN IS LONGER THAN 50 FEET AND #8 WHEN HOMERUN IS LONGER THAN 100 FEET. PROVIDE #12 MINIMUM SIZE EQUIPMENT GROUNDING CONDUCTOR IN EACH RACEWAY. INCREASE TO #10 E. G. C. WHEN RUN WITH #10 PHASE CONDUCTORS.

POWER RISER DIAGRAM NOTE'S:

ALL CONDUCTORS SHALL BE COPPER W/ THWN INSULATION MIN. SIZE #12.
 CONTRACTOR SHALL SUPPLY TEMPORARY POWER TO JOB SITE FOR GENERAL AND ALL SUBCONTRACTORS.
 OWNER SHALL PROVIDE ALL PANELS, TIMER, AND CONTRACTORS FOR POWER DISCONNECT AND SHALL BE INSTALLED BY CONTRACTOR.
 VERIFY POWER COMPANY TRANSFORMER AND SHORT CIRCUIT AMPS AVAILABLE PRIOR TO ORDERING MATERIALS.
 SECURE LAMINATED PLASTIC SIGNS ON EXTERIOR WALL AT SERVICE ENTRANCE AT 5'-0" ABOVE FIN GR. TO READ: BLDG. MAIN DISCONNECT
 SIGNS TO HAVE RED BACKGROUND WITH WHITE ENGRAVED LETTERING 3 INCHES HIGH AND 3/32 INCH STROKE.



POWER RISER DIAGRAM

NO SCALE

MDP LOAD SUMMARY

PANEL	CONNECTED KVA					
	COOLING	HEATING	MOTORS	LIGHTING	MISC	TOTAL CONNECT DEMAND
A				66		29
B					52	31
C			52			52
D				39		39
MDP	46	46				46
TOTAL	46	46	52	105	52	