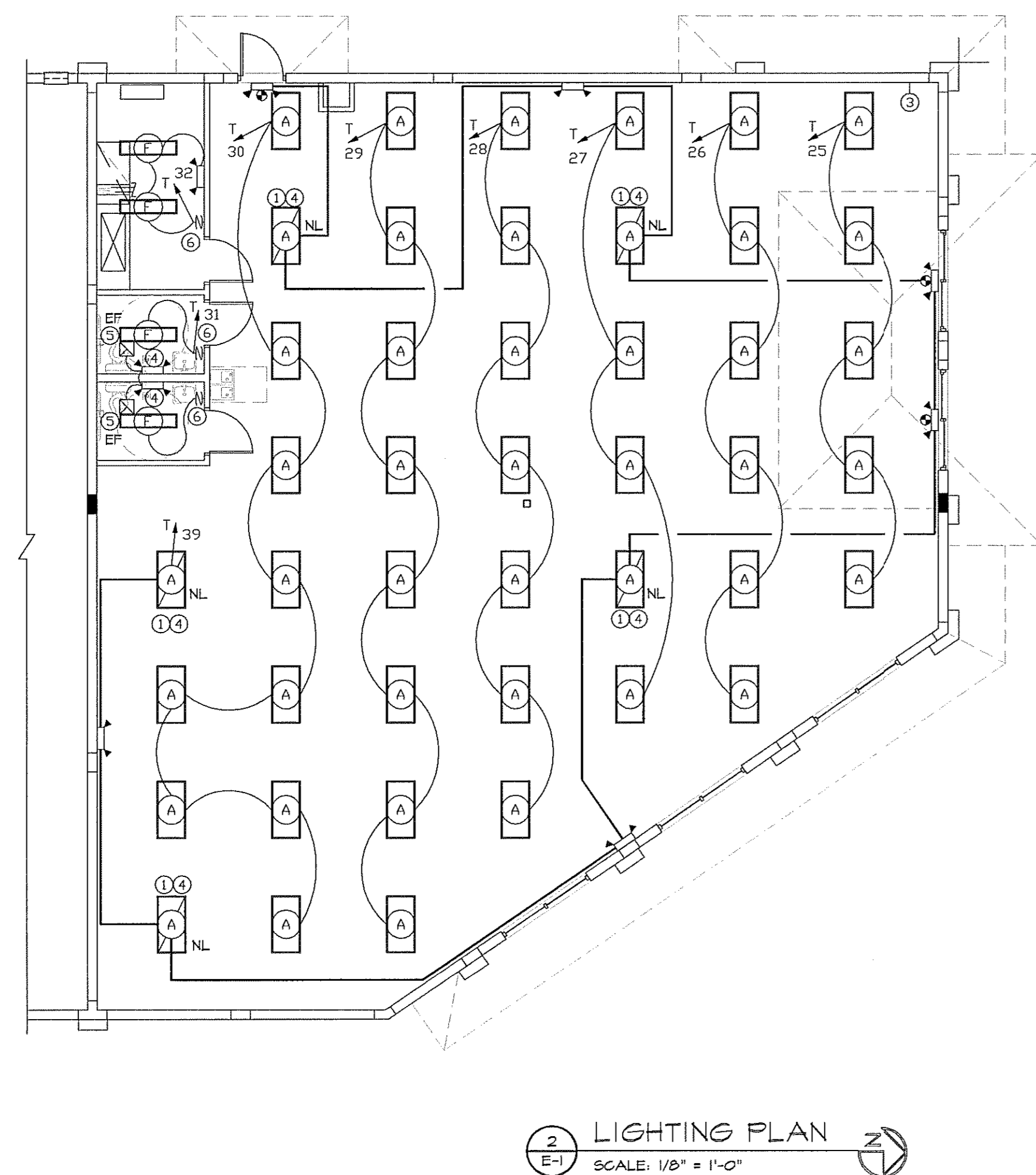
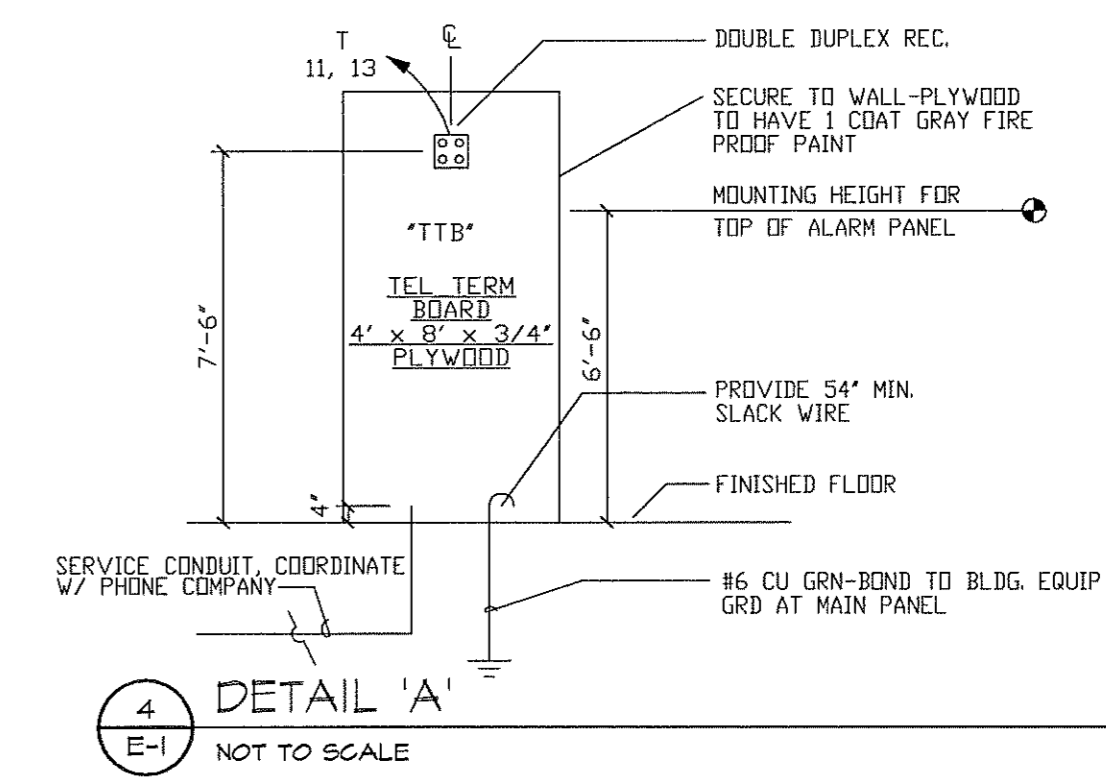


POWER PLAN GENERAL NOTES:

- A. SEAL OFF FITTINGS TO BE INSTALLED ON ALL RACEWAYS GOING TO THE WIBC AT TRANSITION FROM STORE TO COOLER.
- B. DO NOT USE OUTLET BOXES BACK TO BACK. DO NOT USE THRU THE WALL BOXES.
- C. LEAVE PULLWIRES IN ALL EMPTY CONDUITS.
- D. ALL CONDUIT, FITTINGS, STRAPS TO BE PVC IN W.I.B.C.
- E. ELECT. CONTR. TO CONSTRUCT SHELF TO SUPPORT V.C.R., STERED AND U.P.S. IN UTILITY ROOM.
- F. DISCONNECT SWITCHES SHALL BE REQUIRED FOR ALL MECHANICAL EQUIPMENT AND SHALL BE PROVIDED AND INSTALLED BY DIVISION 16 - ELECTRICAL.

POWER PLAN KEY NOTES:

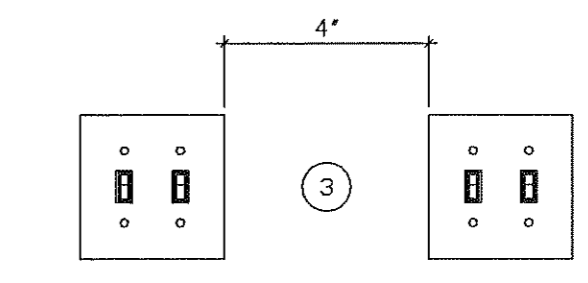
- 1 HARD WIRE TO PANEL (ELECTRIC TANKLESS WATER HEATER)
- 2 MAKE FINAL ELECTRICAL CONNECTION TO ELEC. DOORS.
- 3 INSTALL DISCONNECT, TYP. @ ALL MECHANICAL EQUIPMENT
- 4 RECEPT. TO BE MOUNTED IN CEILING TILE FLUSH WITH CEILING.
- 5 INSTALL 1/2" FLEX COND. DOWN FOR POWER SUPPLY TO PANIC CRASH BAR ON EXTERIOR DOOR, TYP.



LIGHTING NOTES:

THE FOLLOWING LIGHTS ARE TO BE CONTROLLED VIA CONTACTOR:

- 1. SHELF LIGHTS
- 2. WIBC DOOR LIGHTS
- 3. ALL SALES AREA LIGHTS
- 4. RECEPTACLES ABOVE WIBC



ALL (2) GANG BOXES W/ SINGLE POLE SWITCHES MOMENTARY CONTACT FLUSH IN WALL

3
E-1
SWITCH BANK DETAIL
NO SCALE

LIGHTING PLAN GENERAL NOTES:

- A. SEAL OFF FITTINGS TO BE INSTALLED ON ALL RACEWAYS GOING TO THE WIBC AT TRANSITION FROM STORE TO COOLER.
- B. LIGHTING TO BE RELOCK OR EMT INSTALLATION.
- C. NL NIGHT LIGHT WITH EMERG. BALLAST
- D. EF EXHAUST FAN CONNECTED TO LIGHT
- E. GENERAL LIGHTING LOAD BRANCH CIRCUITRY TO HAVE NO MORE THAN 3 CIRCUITS PER HOME RUN.
- F. LIGHTING CONTACTORS SHALL BE REMOTELY CONTROLLED SUCH THAT EVERY OTHER ROW OF LIGHT FIXTURES IN THE SALES AREA SHALL BE ON SEPARATE CONTACTORS.
- G. LSI LIGHTING - ELECTRICAL CONDUIT / WIRING TO PENETRATE EXTERIOR WALL AND DROP DOWN TO BELOW ROOF ELEVATION.

LIGHTING PLAN KEY NOTES:

- 1 CONNECT TO UN-SWITCHED LEG.
- 2 LIGHTS SWITCHED IN PANEL TYPICAL.
- 3 PROVIDE SWITCH BANK AS INDICATED TO BE LOCATED NEAR ENTRANCE.
- 4 NIGHT LIGHT WITH EMERGENCY BALLAST.
- 5 ELECTRICAL FAN - SEE M-1 FOR ADDITIONAL INFORMATION.
- 6 OCCUPANCY SENSOR (WALL SWITCH WS1201)

REVISIONS	BY

ARTERBURY ARCHITECTS, INC.
AA 26000718
2400 SAND LAKE ROAD
LONGWOOD, FLORIDA 32779
(407) 774-2838
FAX (407) 774-7977

Signature
11.6.09

ABC LIQUORS, INC.
8989 S. ORANGE AVE. - ORLANDO, FLA. 32809
ABC STORE NO. 50 TENANT
2613 N.W. 124TH AVE. SUNRISE, FL. 33233

TENANT POWER & LIGHTING PLAN

DRAWN: S.R.R.
CHECKED: S. RIVERA
DATE: 9-29-09
SCALE: AS NOTED
JOB No: 50 TENANT SHEET
E-1