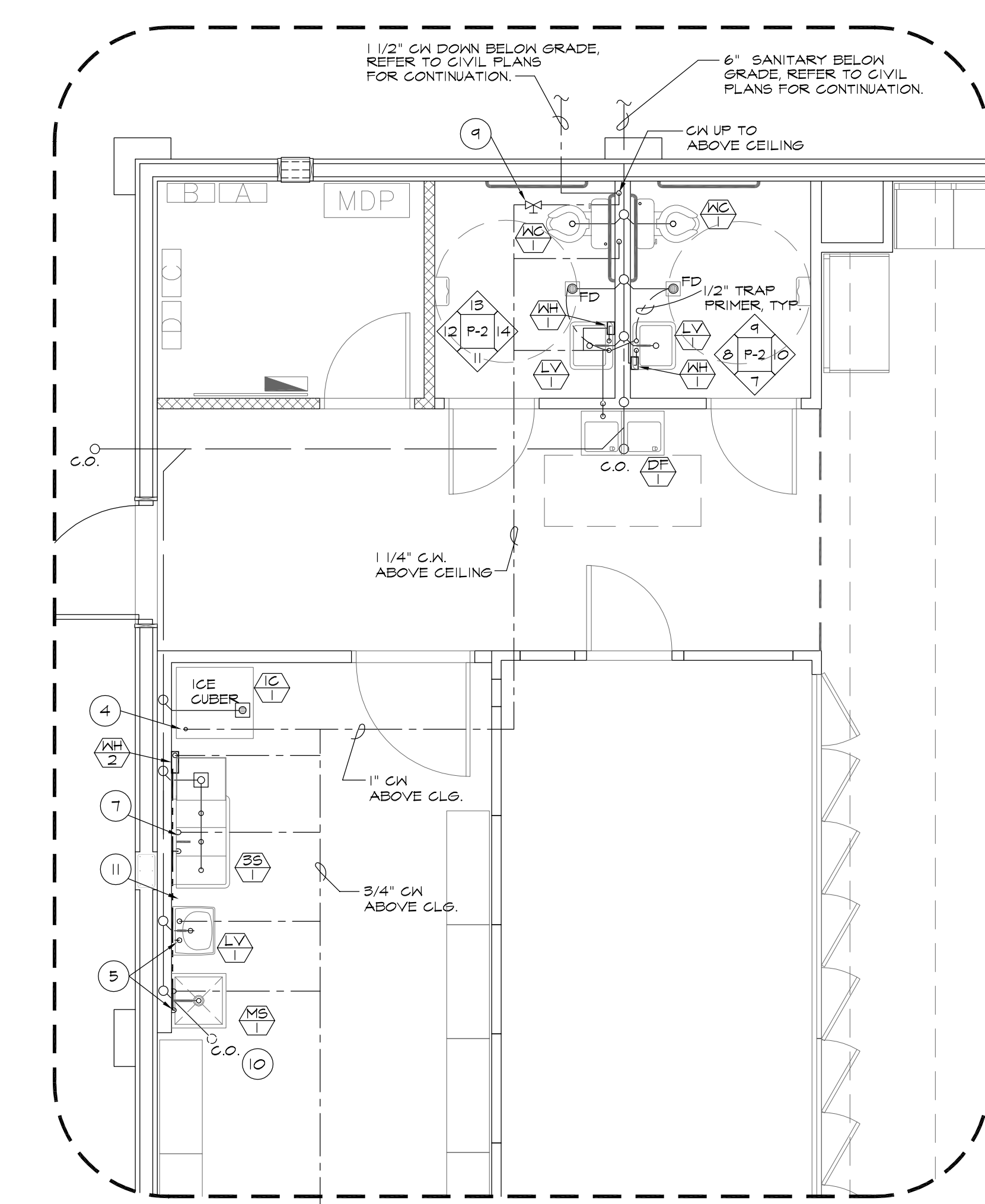
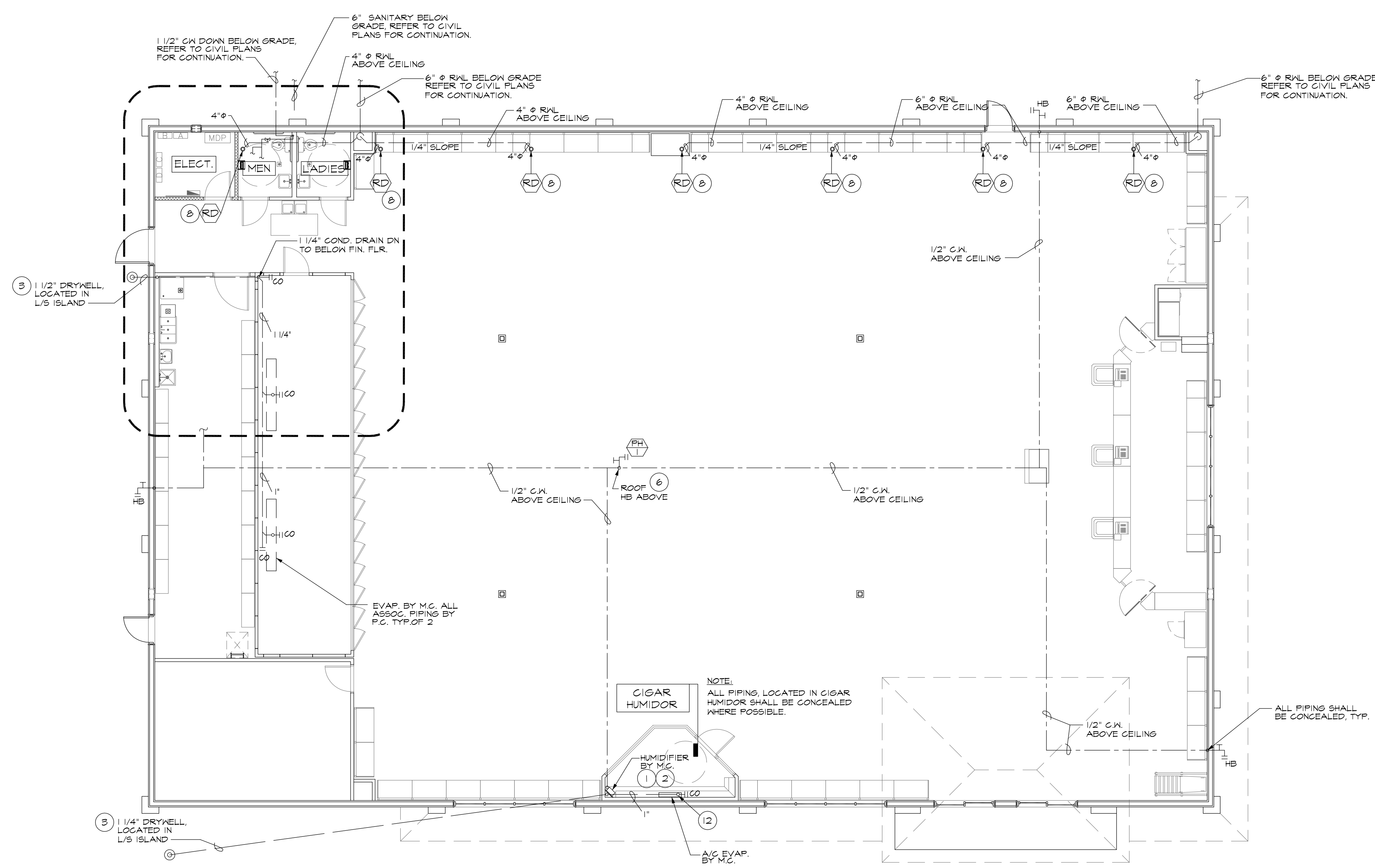


REVISIONS	BY

ARTERBURY ARCHITECTS, INC.
 AAC-001777
 1009 MAITLAND CENTER COMMONS BLVD
 SUITE 216
 MAITLAND, FLORIDA 32751
 (407) 774-2233
 FAX (407) 774-7377

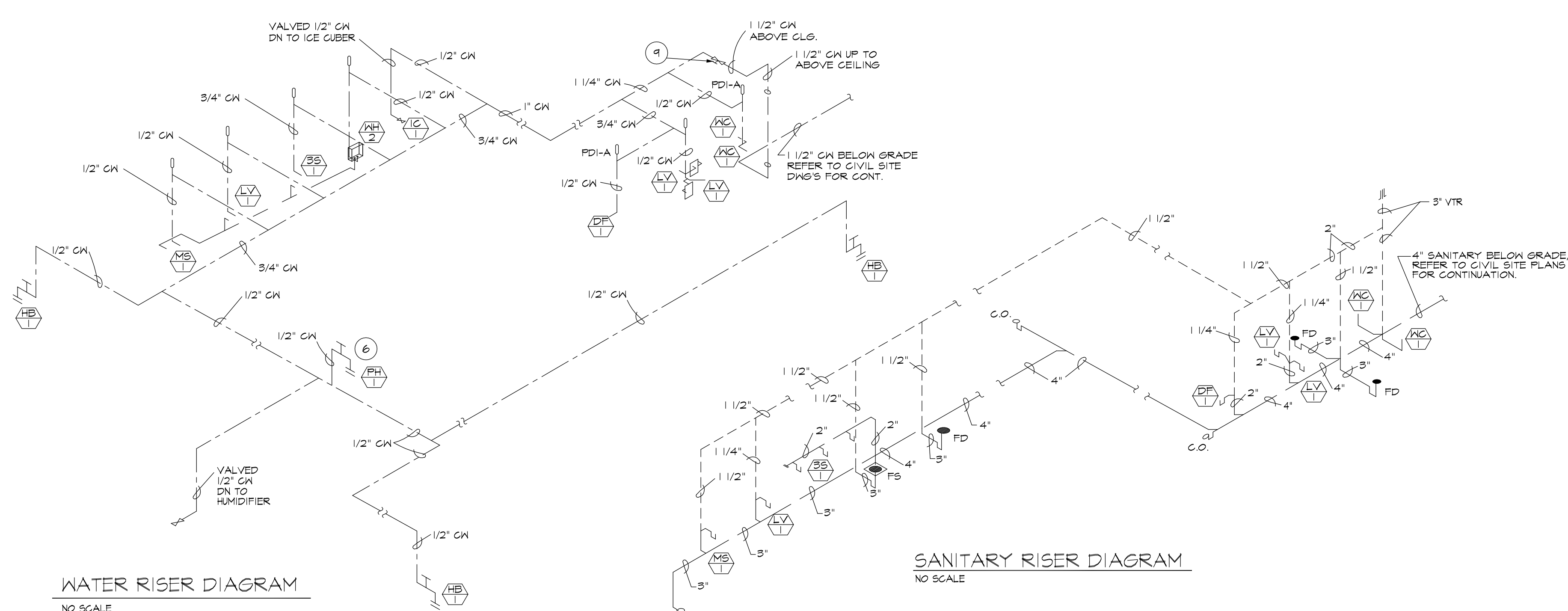
ABC LIQUORS, INC.
 8888 S. ORANGE AVE. - ORLANDO, FLA. 32809
ABC STORE NO. 59 B
 LAKE WALES, FLORIDA

DRAWN: S.L.M.
 CHECKED: S. RIVERA
 DATE: 7-2-09
 SCALE: AS NOTED
 JOB No: 59 B
 SHEET



2 ENLARGED PARTIAL PLUMBING PLAN
 SCALE: 1/4" = 1'-0"

1 PLUMBING PLAN
 SCALE: 1/8" = 1'-0"
 TRUE PROJECT



WATER RISER DIAGRAM
 NO SCALE

SANITARY RISER DIAGRAM
 NO SCALE

FIXTURE SCHEDULE

- 1 H/C LAVATORY; AMERICAN STANDARD MODEL NO. 0256 028 MOUNTED WITH TOP AT 34" A.F.F. PROVIDE WITH MOEN MODEL NO. 8286 FAUCET, GRID STRAINER AND ANGLE STOPS. PROVIDE TRAP INSULATION WRAP, BROGAR PRODUCTS, INC. OR EQ.
- 2 H/C WATER CLOSET; KOHLER MODEL K-4286 (BOWL) & K4634 (TANK), 1.6 GAL. FLUSH. PROVIDE WITH BREVIA K-4664 SEAT LESS COVER.
- 3 TOILET ROOM WATER HEATER; INSTANTANEOUS POINT OF USE EEMAX # SP2412, 120V, 2.4KW
- 4 DRINKING FOUNTAIN; BARRIER-FREE SPLIT-LEVEL WATER COOLER AS MANUF. BY OASIS. MODEL NO. P8AMSL, 1150 / 10
- 5 ICE CUBER; HOSHIZAKI 1200 SAE WITH B-900 BIN
- 6 3-COMPARTMENT SINK; AERO MODEL NO. P53 21/2 W/ 18" DRAIN BOARD
- 7 STORAGE ROOM WATER HEATER; INSTANTANEOUS POINT OF USE EEMAX # EX1608TC, 208V, 16.6KW
- 8 STAINLESS STEEL MOP SINK; AERO MODEL NO. SMP-2424-6 (24"x24"x10") PROVIDE WITH AERO MODEL NO. S-10 (POLISHED CHROME FINISH) EXPOSED-YOKE WALL-MOUNTED UTILITY FAUCET W/ WATTS SERIES 8 HOSE CONNECTION VACUUM BREAKER.
- 9 POST HYDRANT - ZURN MODEL # Z-1395 - 3/4"
- 10 HOSE BIBBS - ZURN MODEL # Z-1330 - 3/4"
- 11 ROOF DRAIN; ZURN MODEL NO. Z-2112 12" DIAMETER ROOF DRAIN, DURA-COATED CAST IRON BODY W/ COMBO. MEMBRANE FLASHING CLAMP / GRAVEL GUARD & LOW SILHOUETTE CAST IRON DOME.

FIXTURE CALCS	WATER CLOSET	LAVATORY	DRINKING FOUNTAIN
PER FPG 2001 W/ SUPPLIMENTS (TABLE 403.1)	1 PER 500	1 PER 750	1 PER 1000
9686 SQ. FT. GFA @ 30 SQ. FT. PER PERSON = 323 PEOPLE	MEN 1	1	(1) H/C ACCESSIBLE
	WOMEN 1	1	

KEY NOTES

- 1 1/2" VALVED CW DN TO HUMIDIFIER, NORTEC "RESOLUX", INSTALLED BY M.C. WIRED BY E.C. ALL ASSOCIATED PIPING BY P.C.
- 2 ROUTE 3/4" OVERFLOW LINE FROM HUMIDIFIER VIA INDIRECT CONNECTION TO DRYWELL IN LANDSCAPED AREA.
- 3 DRYWELL, REFER TO DETAIL ON SHT. P-2
- 4 1/2" VALVED CW DN TO ICE CUBER
- 5 PROVIDE HOT WATER FROM POINT OF USE WATER HEATER.
- 6 1/2" CW UP TO HOSE BIBB ON ROOF ABOVE
- 7 3/4" CW DN TO 3-COMP. SINK AND INTO POINT OF USE WATER HEATER (SINK IS TO BE USED FOR SANITATION OF ICE SCOOP)
- 8 4" RAL UP TO RD ABOVE
- 9 EMERGENCY SHUT-OFF VALVE W/ ACCESS PANEL IN CEILING.
- 10 PROVIDE BACK SPLASH AT MOP SINK. CAULK ALL SINKS AT WALL.
- 11 PROVIDE / INSTALL SOAP DISPENSER / PAPER TOWEL THIS LOCATION. SEE SHEET P-2 FOR SPEC.
- 12 1" CONDENSATE FROM AUX. DRIP PAN BELOW HUMIDOR A/C UNIT

LEGEND

---	COLD WATER LINE
---	HOT WATER LINE
---	SANITARY SEWER LINE
---	VENT
HB	HOSE BIBB
FD	FLOOR DRAIN
FS	FLOOR SINK
FD	FLOOR/TUNNEL DRAIN
+	POINT OF CONNECTION NEW TO EXISTING
○	FLOOR CLEAN-OUT
∇	GATE VALVE
∇	EMERGENCY SHUT-OFF VALVE

PLUMBING PLAN