

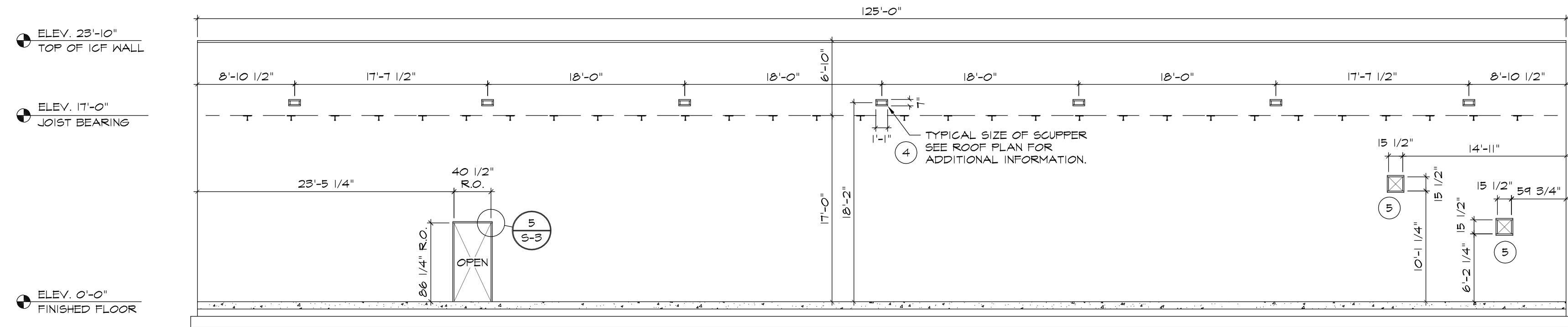
1 EAST ARCHITECTURAL ELEVATION  
SCALE: 1/8" = 1'-0"

+ POS  
- NEG  
DENOTES DESIGN WIND PRESSURES IN PSF

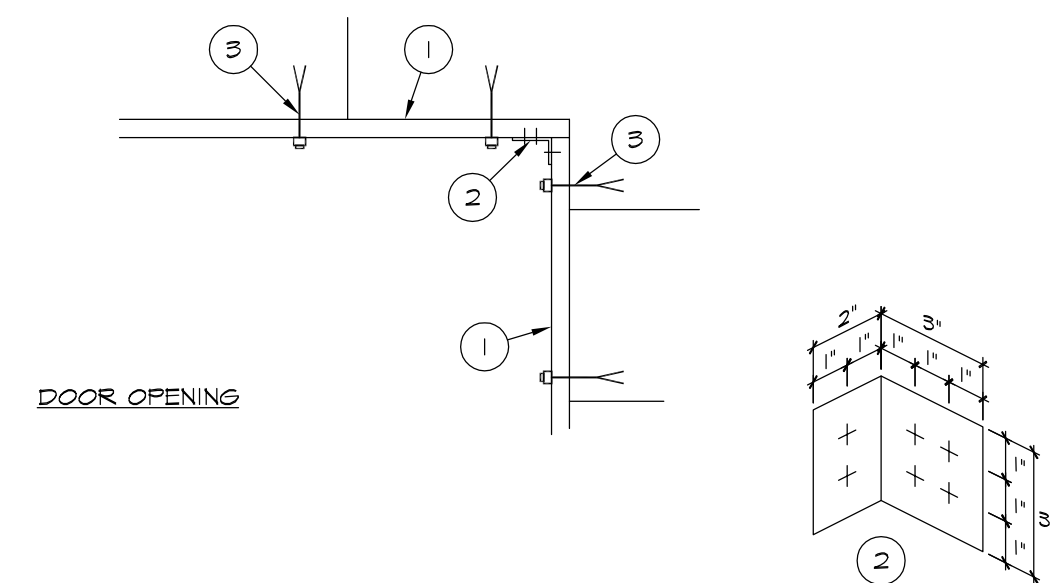
NOTE:  
ARCH. ELEV. SHOWN FOR REFERENCE ONLY REFER TO ARCH. ELEVATIONS FOR DETAILS & FINISHES.

KEY NOTES

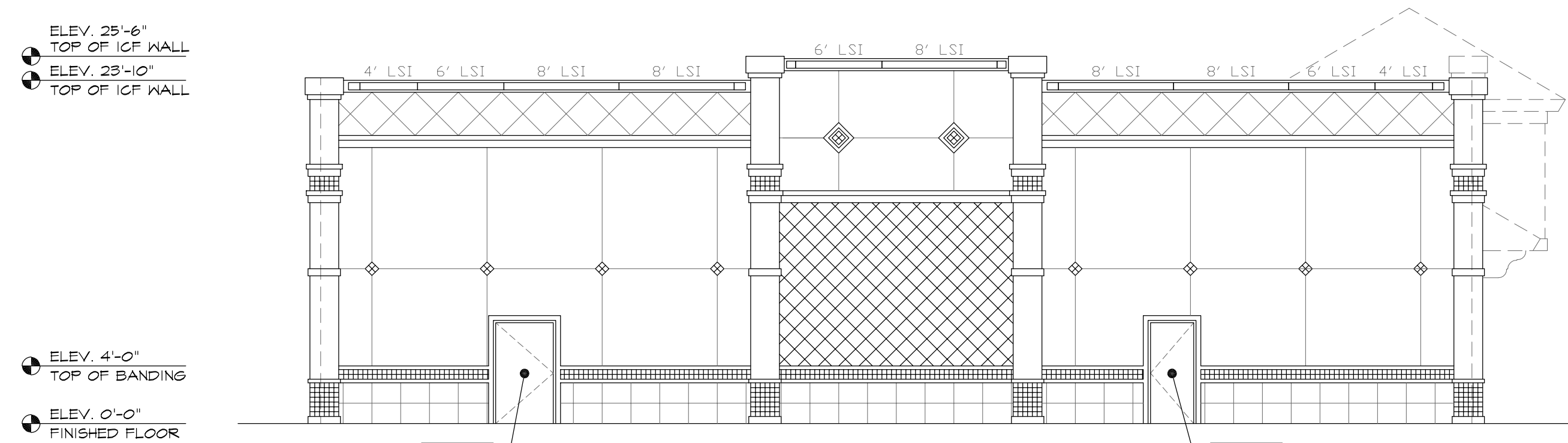
- 1 WALL OPENING FRAMING - ALL LUMBER TO BE 2X10 P.T. S.Y.P. #2 OR BETTER
- 2 16 GA. CLIP ANGLE
- 3 EXPANSION ANCHORS 3/4" x 6" LONG. SPACED AT MAX. OF 4" FROM ENDS AND 16" O.C. MAX.
- 4 1" x 13" OPENING FOR RAIN WATER SCUPPERS, TYP. 7 LOCATIONS - SEE SHEET A-6 (ROOF PLAN) FOR ADDITIONAL INFORMATION.
- 5 15 1/2" SQUARE OPENING FOR STORMPROOF LOUVER - SEE EXTERIOR ELEVATIONS FOR ADD. INFO.



2 EAST STRUCTURAL ELEVATION  
SCALE: 1/8" = 1'-0"



5 FRAMING AT OUT-SWING DOOR  
SCALE: 3/4" = 1'-0"

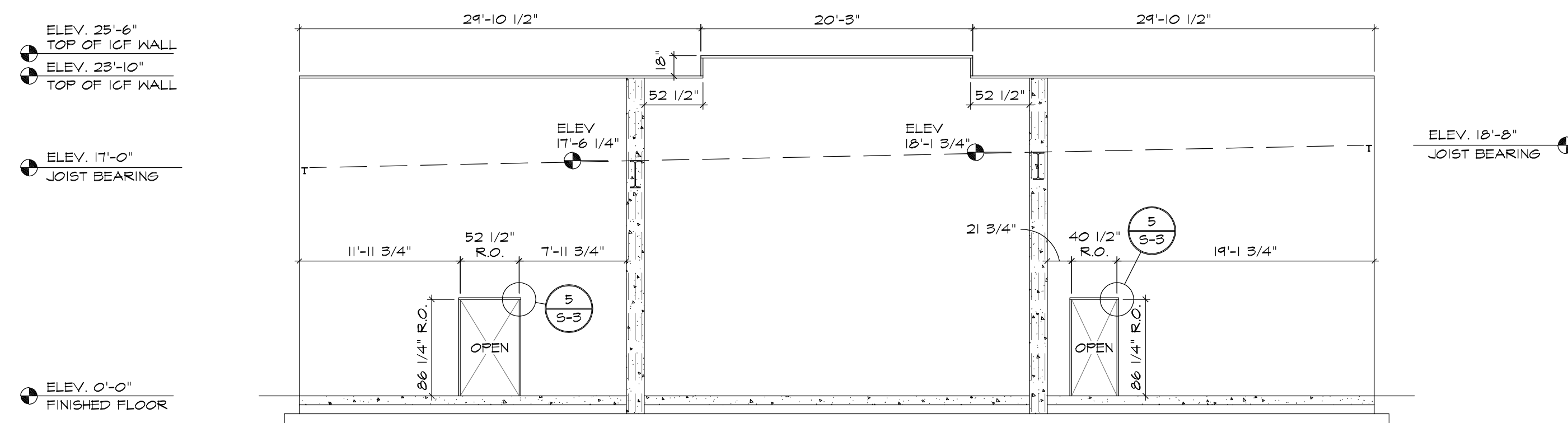


3 NORTH ARCHITECTURAL ELEVATION  
SCALE: 1/8" = 1'-0"

+ POS  
- NEG  
DENOTES DESIGN WIND PRESSURES IN PSF

NOTE:  
ARCH. ELEV. SHOWN FOR REFERENCE ONLY REFER TO ARCH. ELEVATIONS FOR DETAILS & FINISHES.

6 RESERVED  
SCALE:



4 NORTH STRUCTURAL ELEVATION  
SCALE: 1/8" = 1'-0"

7 RESERVED  
SCALE:

REVISIONS	BY

**Lindemann Bentzon Bojack**  
ENGINEERING DESIGN INSPECTION <<<

290 CITRUS TOWER BLVD.  
SUITE 200  
CLERMONT, FLORIDA 34711  
PHONE: (352) 242-0100  
FAX: (352) 242-0302

**ABC LIQUORS, INC.**  
8989 S. ORANGE AVE. - ORLANDO, FLA. 32809

**ABC STORE NO. 59 B**  
LAKE WALES, FLORIDA

STRUCTURAL ELEVATIONS

DRAWN: M. MAISCO  
CHECKED: S. RIVERA  
DATE: 7-2-09  
SCALE: AS NOTED  
JOB No: 59 B  
SHEET

S-4