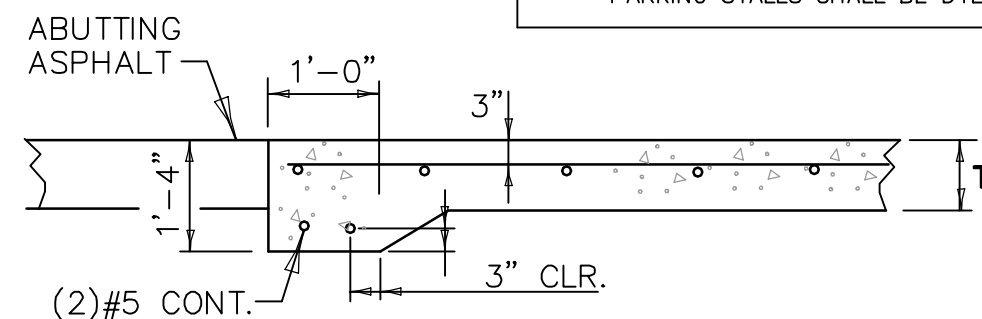
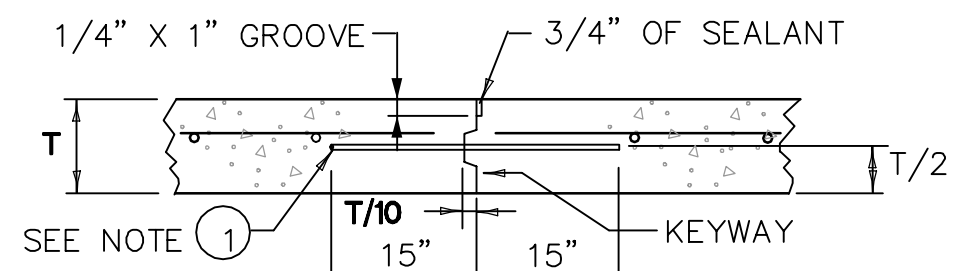


GENERAL SPECIFICATIONS

1. CONCRETE SERVICE PAD SHALL HAVE 28 DAY COMPRESSIVE STRENGTH OF 4,000 PSI.
2. REINFORCING STEEL SHALL COMPLY WITH ASTM A615 GRADE 60 OR ASTM A705 GRADE 60. BAR BENDING AND PLACEMENT SHALL COMPLY WITH THE LATEST ACI STANDARDS.
3. EQUIVALENT AREA F_y 65,000 psi ASTM A 185 OR A 497 REINFORCING CAGES MAY BE USED IN LIEU OF GRADE 60 REINFORCING BARS.
4. JOINTS TO BE PROVIDED @ 20' MAX. SEPARATION
5. CONCRETE PAVEMENT LOCATED IN PARKING STALLS SHALL BE DYED BLACK.

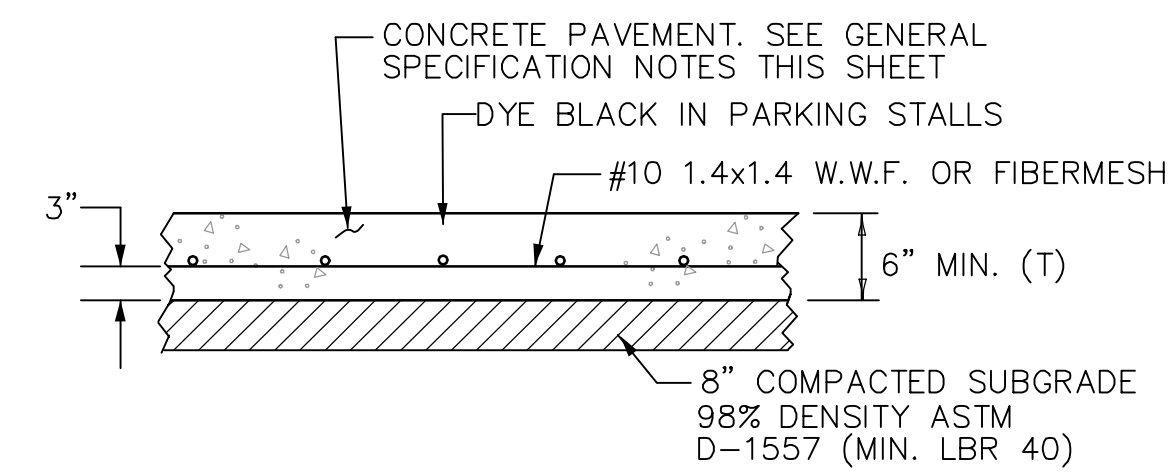


END OF PAVEMENT DETAIL

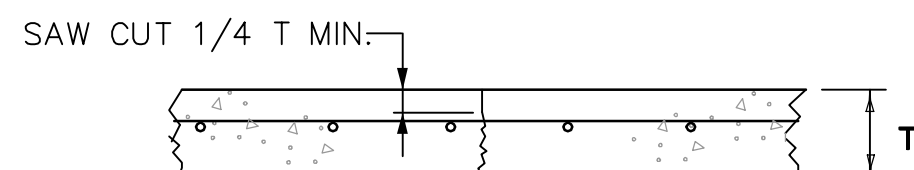


- NOTES:
1. BARS SHALL BE #5 DEFORMED REBARS. @ 24" O.C.

CONSTRUCTION JOINT (CJ)



CONCRETE PAVEMENT DETAIL

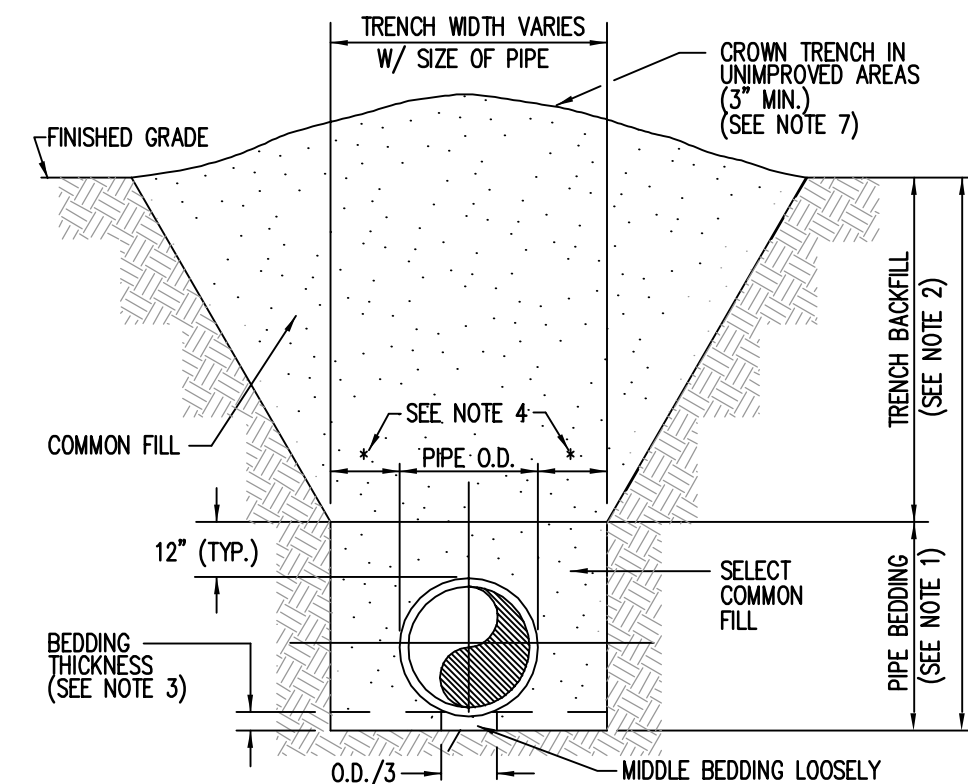


- NOTE: CONTRACTION JOINTS TO BE SPACED AS NOTED OR NOT MORE THAN 20 FT.

SAWED CONTROL JOINTS (SCJ)

9 CONCRETE PAVEMENT DETAILS

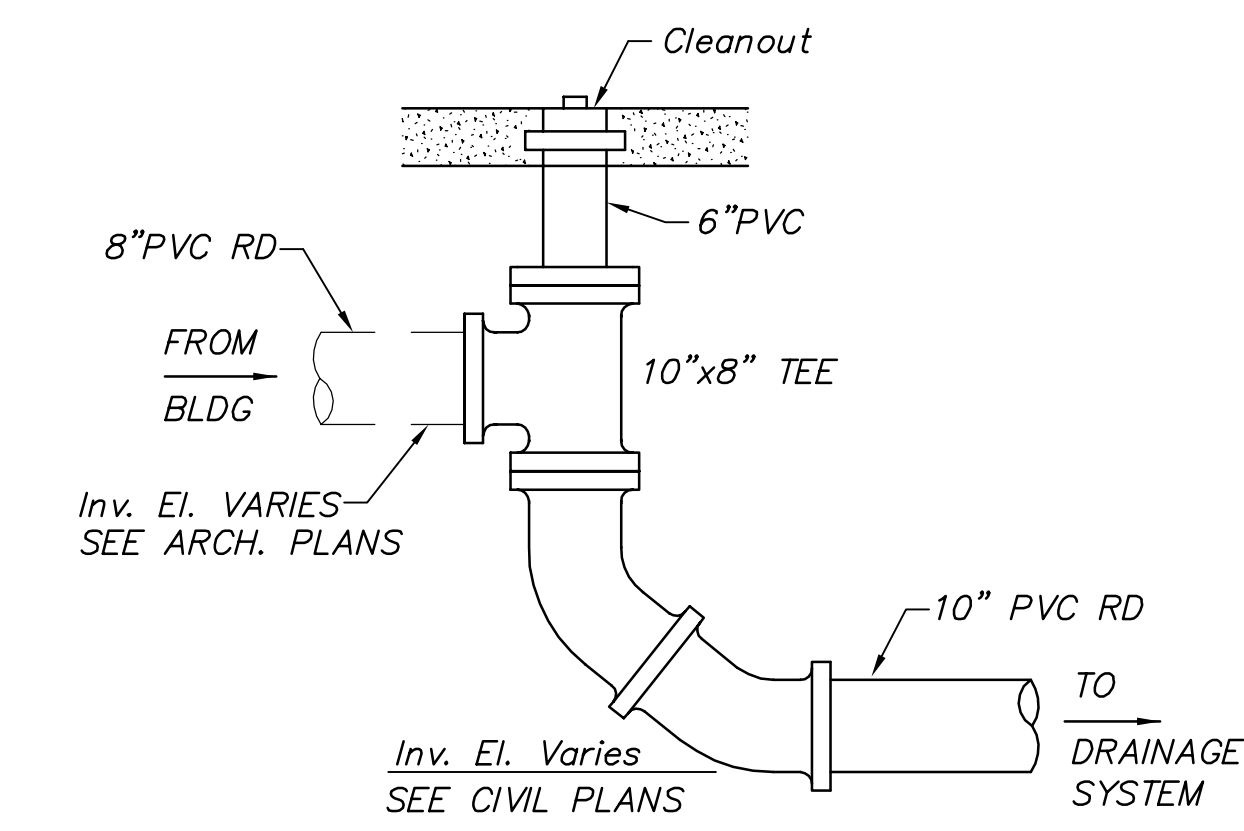
N.T.S. NOTE: DIMENSION T = 6"



- NOTES:
1. PIPE BEDDING SHALL BE SELECT COMMON FILL COMPACTED TO 95% OF THE MAXIMUM DENSITY AS PER AASHTO T-180.
 2. TRENCH BACKFILL SHALL BE COMMON FILL COMPACTED TO 95% OF THE MAXIMUM DENSITY AS PER AASHTO T-180.
 3. PIPE BEDDING UTILIZING SELECT COMMON FILL: O.D./24 MIN., NOT LESS THAN 3" OR BEDDING ROCK: O.D./12 MIN., NOT LESS THAN 6"
 4. PIPE OUTSIDE DIAMETER (O.D.) FOR PIPE DIAMETER LESS THAN 24", AND 24" MAX. FOR PIPE DIAMETER 24" AND LARGER.
 5. WATER SHALL NOT BE PERMITTED IN THE TRENCH DURING CONSTRUCTION.
 6. ALL PIPE TO BE INSTALLED WITH BELL FACING UPSTREAM TO THE DIRECTION OF THE FLOW.
 7. FINAL RESTORATION IN IMPROVED AREAS SHALL BE IN COMPLIANCE WITH ALL APPLICABLE REGULATIONS OF GOVERNING AGENCIES. SURFACE RESTORATION WITHIN RIGHT-OF-WAY SHALL COMPLY WITH REQUIREMENTS OF THE APPROPRIATE RIGHT-OF-WAY UTILIZATION REGULATIONS AND ROAD CONSTRUCTION SPECIFICATIONS.

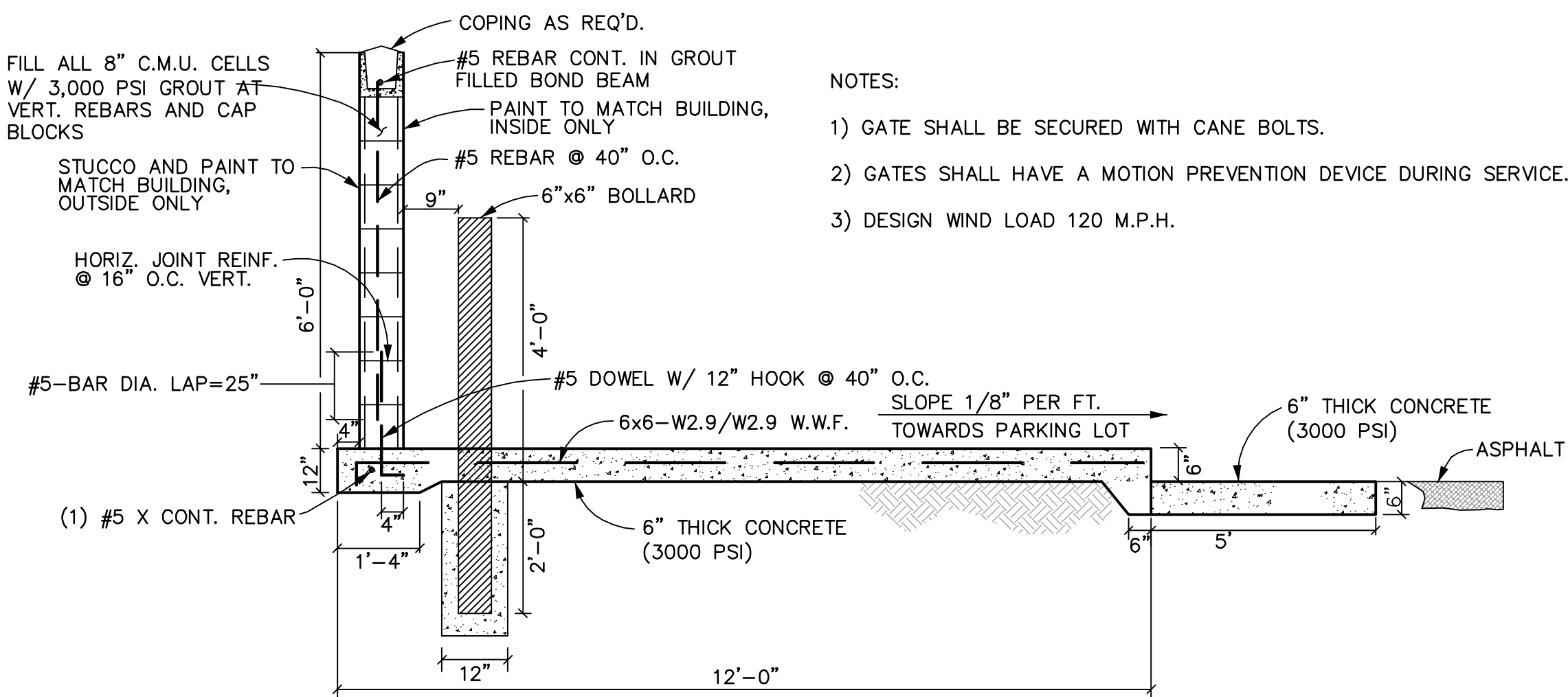
10 TYPE B BEDDING AND TRENCHING

N.T.S.



11 ROOF DRAIN CONNECTION

N.T.S.



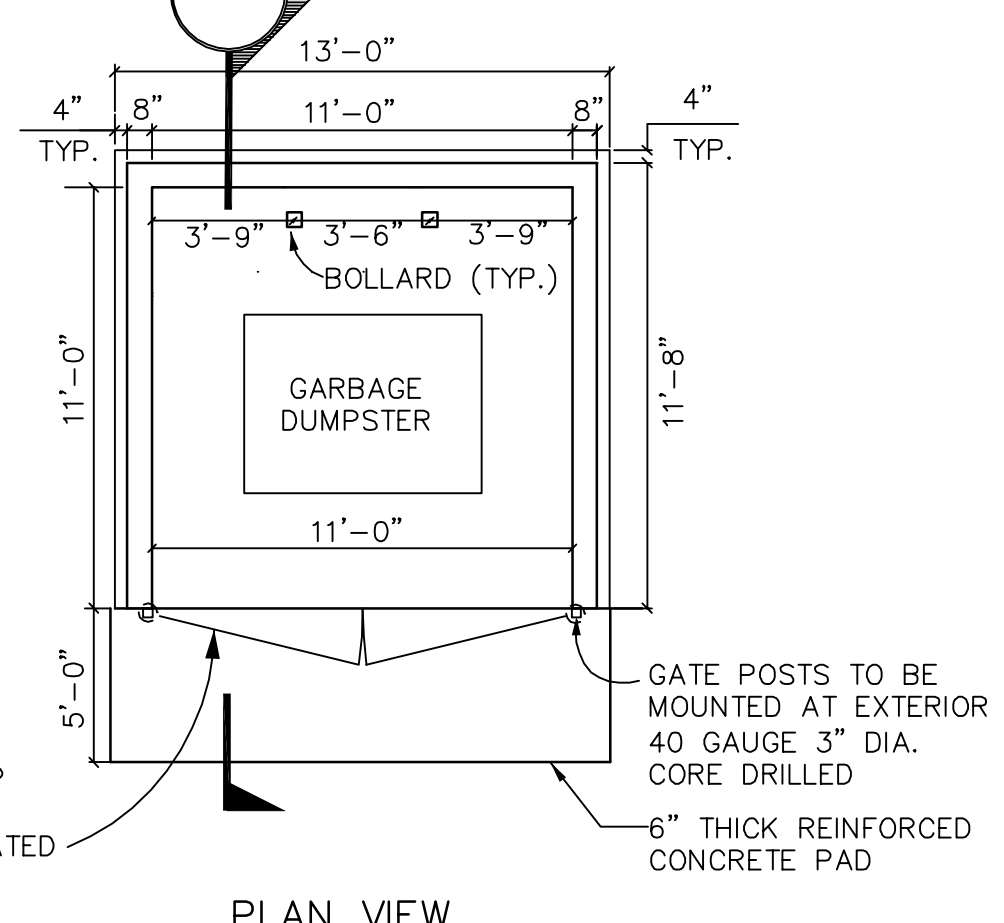
DUMPSTER WALL DETAIL - SECTION A

NO SCALE



GATE DROP BOLT

CHAINLINK GATES W/ PRIVACY FRP SLATS "DURASLATT" OR EQUAL. COLOR OF SLATS TO BE COORDINATED W/ ENCLOSURE COLOR.

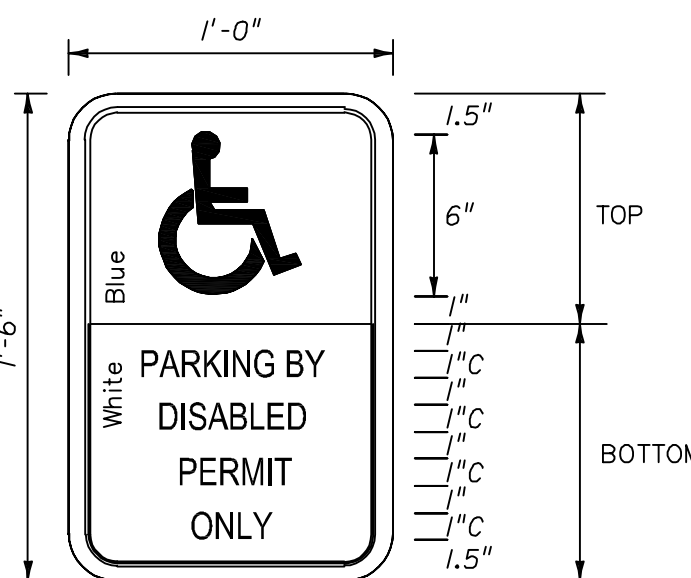


PLAN VIEW

12 DUMPSTER ENCLOSURE DETAILS

N.T.S.

FTP-20-06
1' X 1'-6"
2" Radii 3/8" Border
1" Series C Legend
Color Top Bottom
Background Blue White
Legend and Border White Black

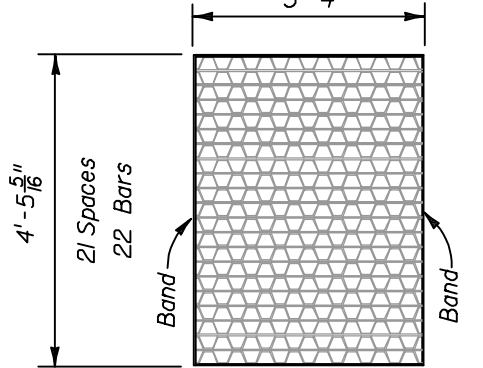
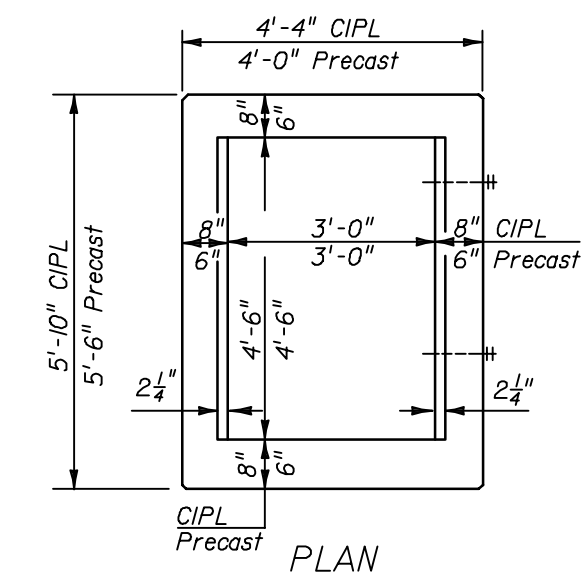


FTP-22-06
1' X 6"
1" Radii 3/8" Border
1" Series C
White Background
Black Legend & Border

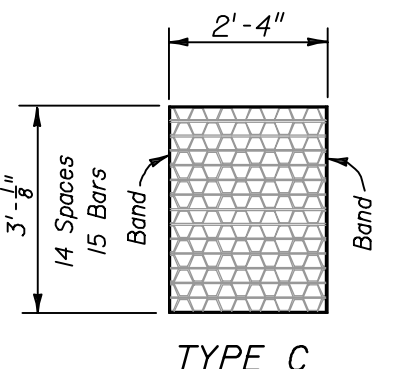
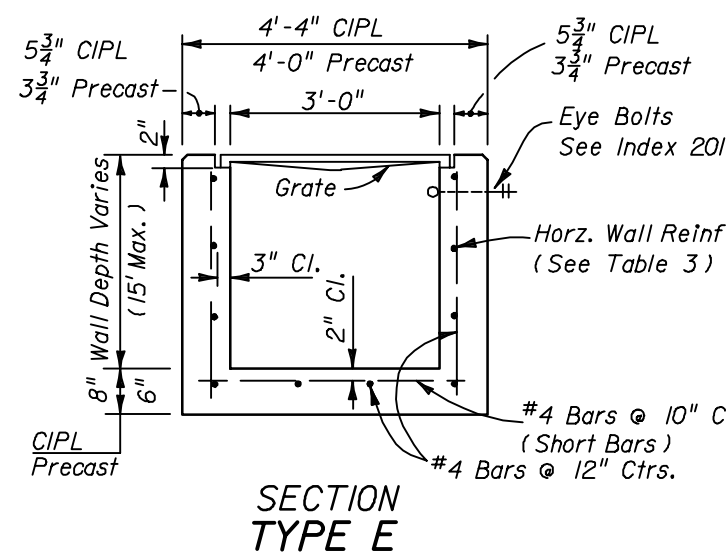
- NOTES:
- 1) ALL LETTERS SHALL BE BLACK AND SHALL CONFORM TO FDOT "ROADWAY AND TRAFFIC DESIGN STANDARDS".
 - 2) TOP PORTION OF SIGN SHALL HAVE REFLECTORIZED (ENGINEERING GRADE) BLUE BACKGROUND WITH WHITE REFLECTORIZED LEGEND AND BORDER.
 - 3) BOTTOM PORTION OF SIGN SHALL HAVE A REFLECTORIZED (ENGINEERING GRADE) WHITE BACKGROUND WITH BLACK LEGEND AND BORDER.
 - 4) ONE SIGN REQUIRED FOR EACH HANDICAP PARKING SPACE.
 - 5) HEIGHT OF SIGN SHALL BE 7' ABOVE GROUND IN ACCORDANCE WITH FDOT "ROADWAY AND TRAFFIC DESIGN STANDARDS".

13 HANDICAP PARKING SIGN DETAILS

N.T.S. FDOT INDEX NO. 17355



TYPE E
Straight Bars 2"x 1/4"
Reinforcing Bars 1/4" x 3/8"
Bands 2"x 1/4"
Approx. Weight 215 Lbs.



TYPE C
Straight Bars 2"x 1/4"
Reinforcing Bars 1/4" x 3/8"
Bands 2"x 1/4"
Approx. Weight 104 Lbs.

HORIZONTAL WALL REINFORCING SCHEDULES (TABLE 3)

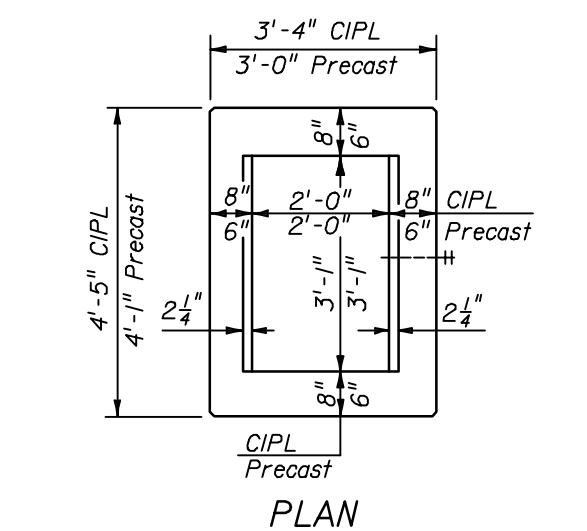
WALL DEPTH	SCHEDULE	AREA (in ² /ft)	MAX. SPACING BARS WWF
0'-5"	A12	0.20	12" 8"
0'-7.5"	A6	0.20	6" 5"
7.5'-10"	B5.5	0.24	5 1/2" 5"
10'-15"	C6.5	0.37	6 1/2" 6"

TYPE E
Recommended Maximum Pipe Size:
3'-0" Wall-24" Pipe
4'-6" Wall-36" Pipe

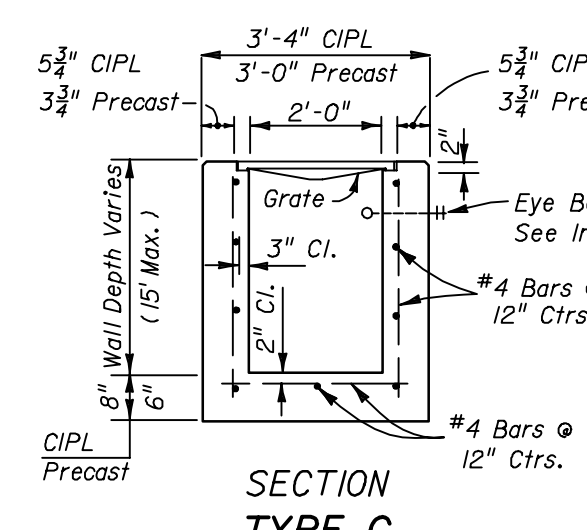
HORIZONTAL WALL REINFORCING SCHEDULES (TABLE 1)

WALL DEPTH	SCHEDULE	AREA (in ² /ft)	MAX. SPACING BARS WWF
0'-15"	A12	0.20	12" 8"

TYPE C
Recommended Maximum Pipe Size:
2'-0" Wall-18" Pipe
3'-0" Wall-24" Pipe (18" where an 18" pipe enters a 2'-0" wall)



SECTION TYPE E



SECTION TYPE C

14 FDOT TYPE C & E INLETS (INDEX NO. 232)

N.T.S.

REVISIONS	BY
Δ CITY COMMENTS	

DRMP
ENGINEERS - SURVEYORS - PLANNERS - SCIENTISTS
941 Lake Baldwin Lane - Orlando, Florida 32814
Phone: 407.896.0594 Fax: 407.896.4836
Florida Certificate of Authorization No. 2648

Dyer, Riddle, Mills, & Precourt, Inc.

WARNING
IF THIS BAR DOES NOT MEASURE 1" THIS COPY OF THE DOCUMENT IS NOT TO SCALE

JOHN C. KELLY, P.E.
FLORIDA P.E. #44011

ABC LIQUORS, INC.
8889 S. ORANGE AVE. - ORLANDO, FLA. 32824
ABC FINE WINE & SPIRITS STORE NO. 59
U.S. HIGHWAY 27, LAKE WALES, FLORIDA 33888

DRAWN: CKS
CHECKED: JCK
DATE: DEC. 2008
SCALE: AS NOTED
JOB No: 08-0606.000

SHEET: 10 OF 25

CIO

PAYING AND DRAINAGE DETAILS