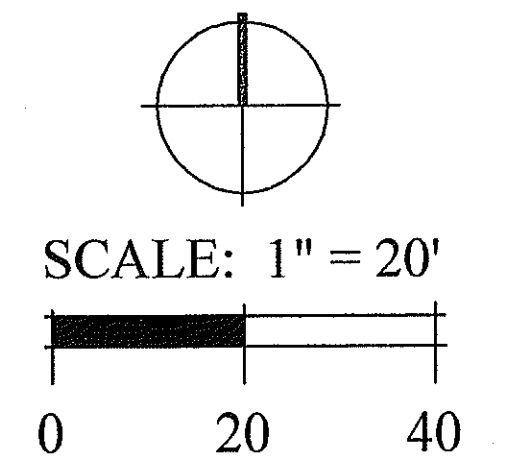


**CONTRACTOR NOTE:**

\* CONTRACTOR IS EXPECTED TO CARRY OUT ALL RESPONSIBILITIES SET FORTH IN THE LANDSCAPE NOTES AND IN THE SPECIFICATIONS. THEY WILL BE ENFORCED BY THE LANDSCAPE ARCHITECT AND/OR ENGINEER.



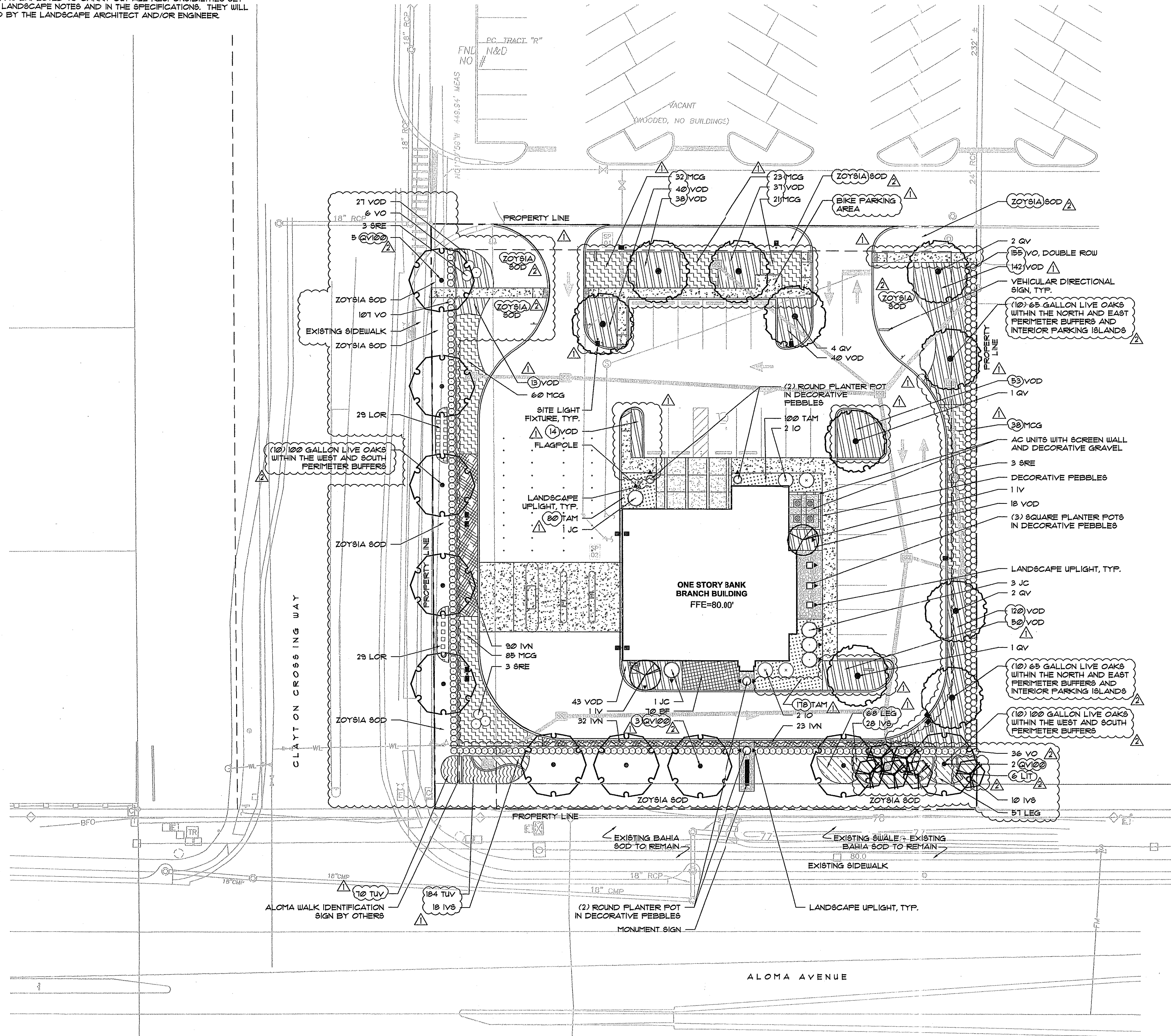
Date:	10/7/09
Drawn by:	SO
Reviewed by:	CL
Job Number:	2945
Revision:	Date:
▲	12/1/09
▲	1/13/10

**BANKFIRST**  
Oviedo, Florida

**Grover Bryan, Inc.**  
230 South New York Avenue, Suite 100, Winter Park, FL 32789

**DIX LATHROP**  
AND ASSOCIATES, INC.  
150 N.W. 52ND AVENUE  
MIAMI, FLORIDA 33155  
TEL: 407.667.1777  
FAX: 407.667.1777

**HARDSCAPE, LANDSCAPE & IRRIGATION PLANS**  
Landscape Plan



PROPERTY APPRAISER ID NUMBER 31-21-31-300-024A-0000

SEMINOLE COUNTY  
APPROVED FOR CONSTRUCTION

THIS APPROVAL IS SUBJECT TO SPECIFIC CONFORMANCE TO THE SEMINOLE COUNTY LAND DEVELOPMENT CODE AND ANY SPECIAL REQUIREMENTS OF THE BOARD OF COUNTY COMMISSIONERS. IT SHALL BE THE RESPONSIBILITY OF THE DEVELOPER TO CORRECT ANY DEFECTS IN THE PLANS OR THE FACILITY AS CONSTRUCTED WHICH RESULTS IN A FAILURE TO MEET APPLICABLE CODE REQUIREMENTS. ADMINISTRATIVE ACCEPTANCE OF THE DEVELOPER'S PLANS DOES NOT CONSTITUTE A WAIVER OF ANY CODE REQUIREMENTS NOR DOES IT RELIEVE THE DEVELOPER OF RESPONSIBILITY TO MEET THOSE REQUIREMENTS. THIS SPECIFIC APPROVAL IS VALID FOR A PERIOD OF ONE YEAR FROM THE DATE BELOW.

APPROVED:

SEMINOLE COUNTY DEVELOPMENT REVIEW DEPARTMENT

DATE

Sheet Number:  
**L1.00**