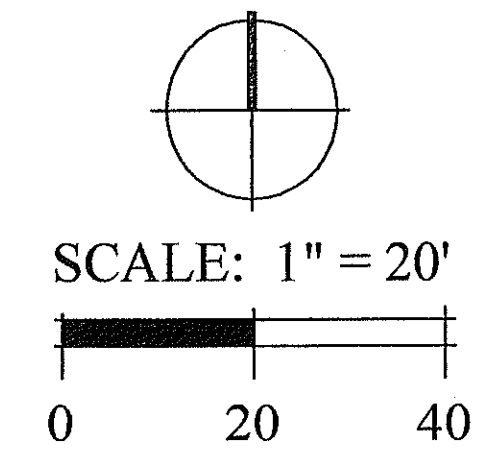
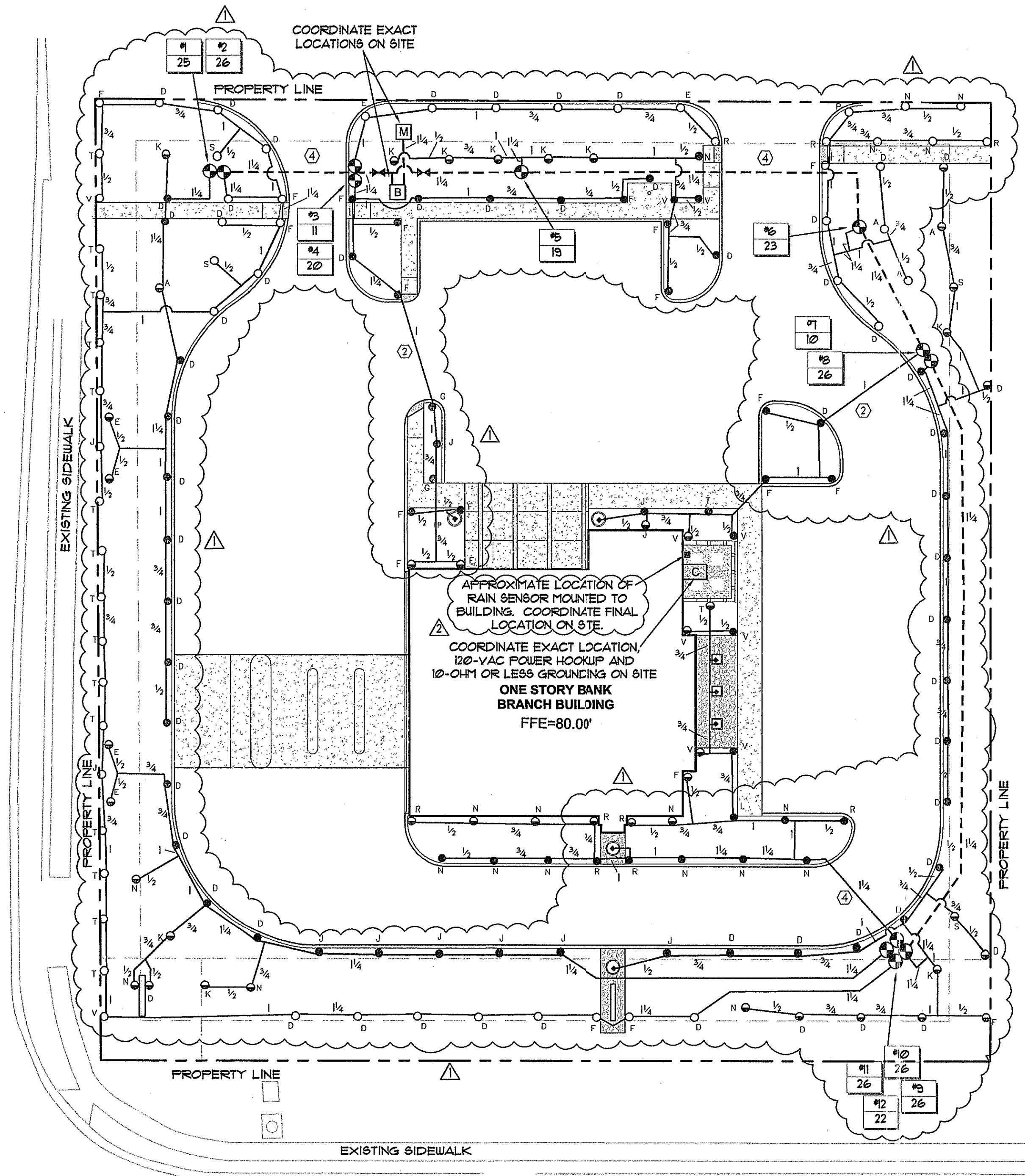


IRRIGATION SOURCE:
 + IRRIGATION SOURCE SHALL BE POTABLE WATER



Date:	10/7/09
Drawn by:	CRB
Reviewed by:	CL
Job Number:	2945
Revision:	Date:
▲	12/1/09
▲	1/13/10

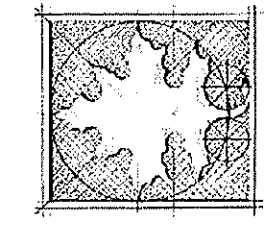
CLAYTON CROSSING WAY



APPROXIMATE LOCATION OF RAIN SENSOR MOUNTED TO BUILDING. COORDINATE FINAL LOCATION ON SITE
 COORDINATE EXACT LOCATION, 120-VAC POWER HOOKUP AND 10-0H4 OR LESS GROUNDING ON SITE
 ONE STORY BANK BRANCH BUILDING
 FFE=80.00'

BANKFIRST
 Oviedo, Florida

Grover Bryan, Inc.
 230 South New York Avenue, Suite 100, Winter Park, FL 32789



DIX, LATHROP
 AND ASSOCIATES, INC.
 150 W. JESSUP AVENUE
 LOYDWOOD, FLORIDA
 FAX 407.667.1779

HARDSCAPE, LANDSCAPE & IRRIGATION PLANS

Irrigation Plan

SEE SHEET IR2.00 FOR SYMBOLS LEGEND

PROPERTY APPRAISER ID NUMBER 31-21-31-300-024A-0000
 SEMINOLE COUNTY
 APPROVED FOR CONSTRUCTION

THIS APPROVAL IS SUBJECT TO SPECIFIC CONFORMANCE TO THE SEMINOLE COUNTY LAND DEVELOPMENT CODE AND ANY SPECIAL REQUIREMENTS OF THE BOARD OF COUNTY COMMISSIONERS. IT SHALL BE THE RESPONSIBILITY OF THE DEVELOPER TO CORRECT ANY DEFECTS IN THE PLANS OR THE FACILITY AS CONSTRUCTED WHICH RESULTS IN A FAILURE TO MEET APPLICABLE CODE REQUIREMENTS. ADMINISTRATIVE ACCEPTANCE OF THE DEVELOPER'S PLANS DOES NOT CONSTITUTE A WAIVER OF ANY CODE REQUIREMENTS NOR DOES IT RELIEVE THE DEVELOPER OF RESPONSIBILITY TO MEET THOSE REQUIREMENTS. THIS SPECIFIC APPROVAL IS VALID FOR A PERIOD OF ONE YEAR FROM THE DATE BELOW.

SEMINOLE COUNTY DEVELOPMENT REVIEW DEPARTMENT
 DATE

[Signature]
 1-12-10

Sheet Number:
IR1.00