



ARCHITECTURE
PLANNING
INTERIOR DESIGN

2425 WEST LOOP SOUTH
SUITE 665
HOUSTON TEXAS 77027
FAX 713-552-9810
713-552-0707
WWW.MGARCHITECTS.COM

CONSULTANTS

STRUCTURAL ENGINEER:
SCA Consulting Engineers

ME/PI ENGINEER:
Henderson Engineers

David A. ...
01.13.10

BankFIRST
Aloma Walk Branch
Aloma Ave.
Oviedo, FL 32765

ISSUE:

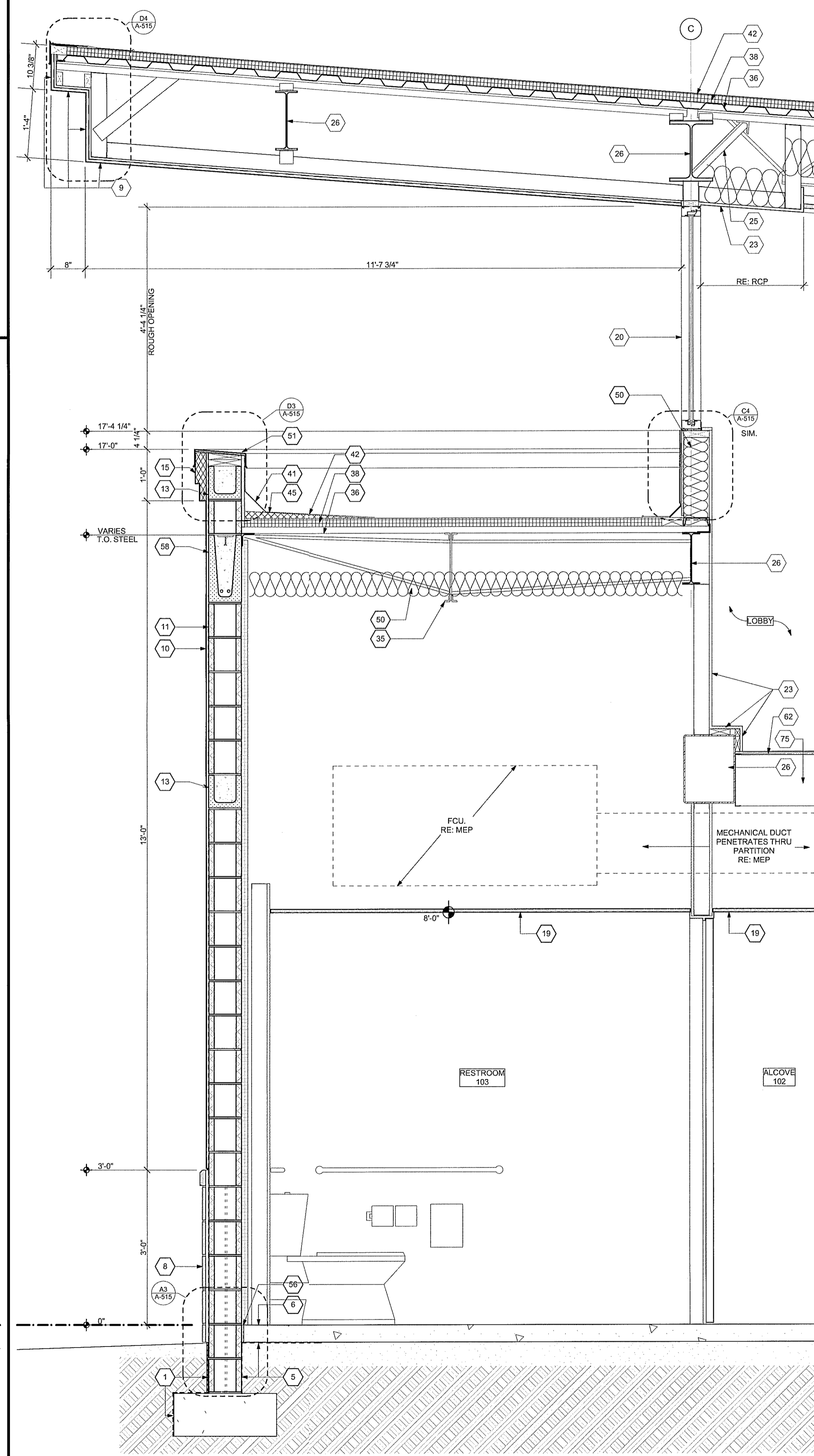
MARK	DATE	DESCRIPTION
	08-19-09	D.D. REVIEW
	09-15-09	DEVELOPER REVIEW
	10-12-09	PRICING
	12-02-09	BUILDING PERMIT
1	01/13/10	RESPONSE TO BUILDING PERMIT COMMENTS

PROJECT NO:
09-529.a

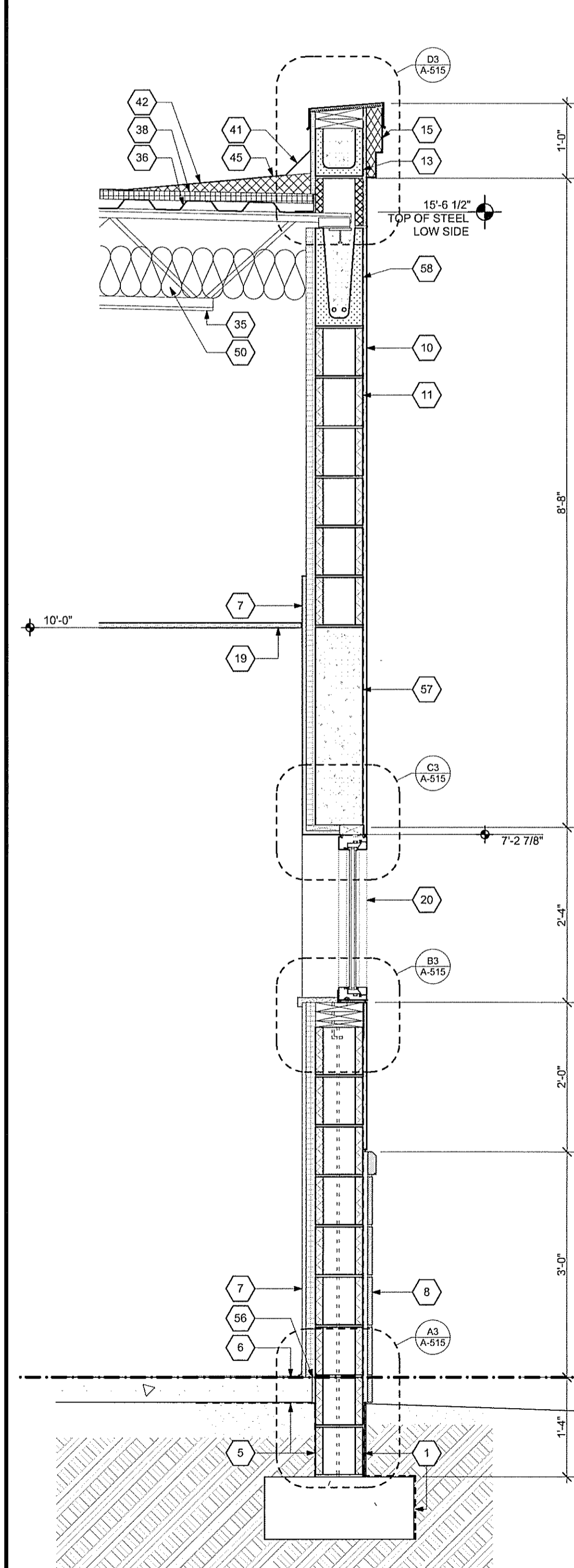
WALL SECTIONS

A-514

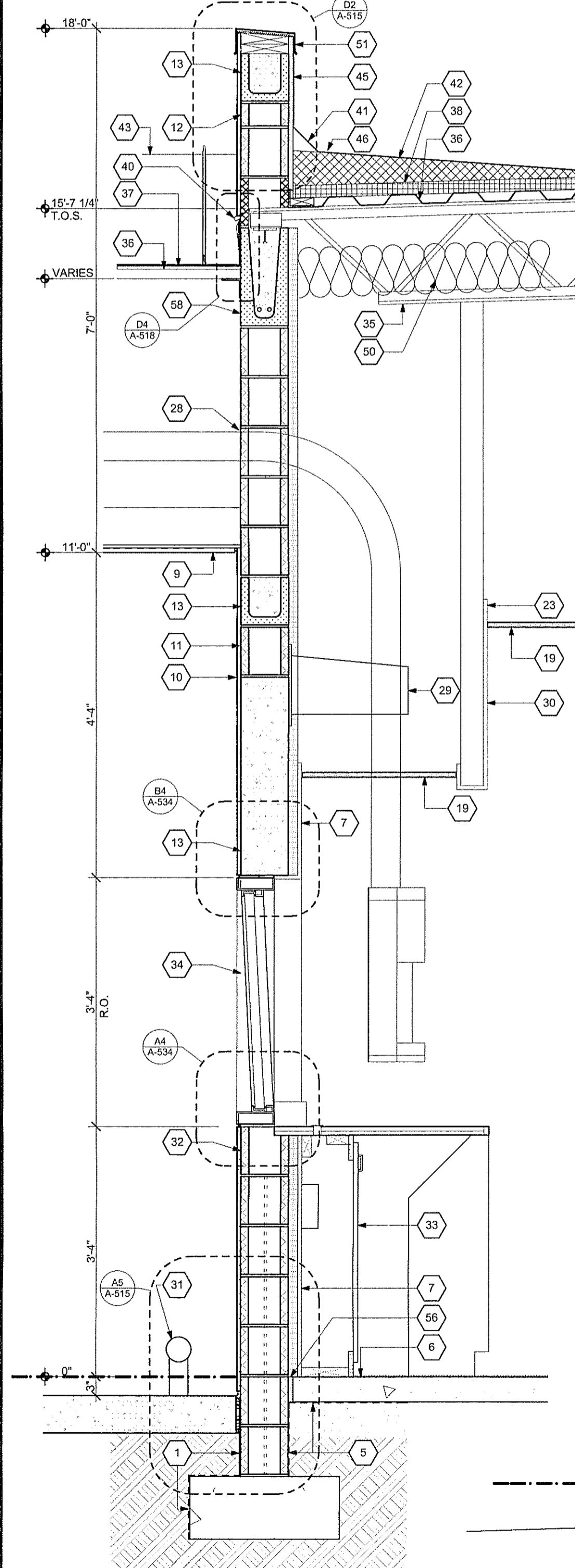
- BELOW SHEET ROOFING WITH PROTECTION BOARD
- 4" MINIMUM REINFORCED TOPPING SLAB SLOPED 1:50 MAX SIDEWALK WITH EXPANSION AND CONTROL JOINTS.
- RECESSED, SLOPED CONCRETE SLAB. RE: STRUCTURE
- WHERE FOUNDATION IS EXPOSED, RUB CONCRETE SMOOTH, GROUT FILL AND SKIM COAT FOR UNIFORM FINISH
- VAPOR RETARDER OVER SAND AND COMPACT FILL. RE: STRUCTURAL
- STRUCTURAL SLAB AND FOUNDATION. RE: STRUCTURAL
- 5/8" GYPSUM BOARD OVER 1 1/2" METAL HAT CHANNELS AT 24" O.C. WITH 1 1/2" RIGID INSULATION
- ARRIS-TILE RENAISSANCE UNIT (RS-1) OVER 3/4" MORTAR BED. RE: EXTERIOR MATERIALS SCHEDULE
- 3/4" STUCCO WITH ACRYLIC FINISH AND RIBBED LATH OVER MEMBRANE DAMPROOFING ON 1/2" DENS GLASS GOLD SHEATHING.
- ALL EXTERIOR STUCCO ON LATH AND LATH FASTENING IS TO CONFORM TO CHAPTER 25 OF THE 2007 FLORIDA BUILDING CODE AND ASTM C 926 AND ASTM C 1063
- 5/8" STUCCO WITH ACRYLIC FINISH OVER WATERPROOFING MEMBRANE ON CMU
- CMU WALL WITH WATERPROOFING MEMBRANE
- 4" X 8" X 16" CMU @ NICHE
- BOND BEAM. RE: STRUCTURAL
- 6" NOMINAL R-19 UNFACED BATT INSULATION
- CUSTOM EIFS FOAM SHAPE WITH ACRYLIC FINISH OVER 5/8" PLASTER
- OPAQUE SPANDREL GLASS WITH 6" NOMINAL R-19 BATT INSULATION BEHIND. VERIFY LOCATIONS WITH EXTERIOR ELEVATIONS ON A-201 AND A-202
- LIGHT GAUGE METAL FRAMING. RE: STRUCTURAL FOR GAUGE, SIZE AND SPACING.
- SEALANT WITH BACKER ROD.
- SCHEDULED LAY IN CEILING
- ALUMINUM STOREFRONT WINDOW SYSTEM
- MOTORIZED MECO SHADE IN METAL POCKET. RE: INTERIOR MATERIAL SCHEDULE.
- HORIZONTAL BRICK CONTROL JOINT WITH SEALANT AND BACKER ROD. RE: STRUCTURAL FOR RELIEF ANGLE DETAIL
- 5/8" GYPSUM BOARD. SCHEDULED FINISH BELOW CEILING LEVEL ONLY.
- ALUMINUM DOOR AND WINDOW FRAMING SYSTEM
- STEEL ANGLE FRAMING. RE: STRUCTURE
- STEEL FRAMING. RE: STRUCTURE
- 3 5/8" STUD FRAMING AT SPANDREL GLASS
- FILL VOIDS WITH INSULATION. COVER WITH SHEATHING AND SEAL AROUND EQUIPMENT TUBES WITH SEALANT AFTER INSTALLATION BY E.S.
- 3/4" PLYWOOD PANEL TO SUPPORT 100# EQUIPMENT BRACKET. VERIFY FINAL LOCATION WITH B.E.S.
- GYPSUM BOARD FURR DOWN ON METAL STUDS WITH LAY IN CEILING. CUT NEATLY AROUND EQUIPMENT.
- STEEL PIPE RAIL CURB. RE: C2/A102
- NOTCH TOP OF WALL AT DEAL DRAWER OPENING. RE: C3/A-534
- MOTOR BANK COUNTER AND COVER PANELS. RE: B2/A-531
- B.R. GLASS IN FABRICATED ALUMINUM FRAME. NO EXPOSED FASTENERS ON EXTERIOR. LOCATE GLASS BUTT JOINTS BEHIND PNEUMATIC TUBES.
- STEEL JOISTS. RE: STRUCTURAL
- METAL ROOF DECKING. RE: STRUCTURAL
- PLYWOOD ROOF DECK MECHANICALLY FASTENED TO METAL DECK. RE: STRUCTURAL
- 1 1/2" RIGID INSULATION BOARD. TAPERED INSULATION WHERE REQUIRED FOR POSITIVE DRAINAGE. RE: ROOF PLAN
- ACCESS HATCH
- "SNAP IN" COUNTERFLASHING SYSTEM
- 4" CANT STRIP
- SINGLE PLY MEMBRANE ROOF SYSTEM
- 24 GAUGE METAL STANDING SEAM METAL ROOF OVER MEMBRANE UNDERLAYMENT
- 24 GAUGE PREFINISHED DRIP EDGE TO MATCH ROOF.
- BASE FLASHING UP WALL, OVER TOP OF PARAPET, DOWN FACE AND OVER WATERPROOFING
- BASE FLASHING
- ROOF DRAIN
- NOT USED
- NOT USED
- PROVIDE R-30 BATT INSULATION WIRED TO BOTTOM OF JOISTS AND R-19 AT ALL VERTICAL SITUATIONS TO FORM A CONTINUOUS ENVELOPE AROUND THE BUILDING.
- PREFINISHED METAL CAP OVER FLEXIBLE FLASHING.
- RECESSED LANE INDICATOR LIGHT. RE: LIGHTING SCHEDULE
- INTERNALLY LIT THREE DIMENSIONAL SIGNAGE LETTERS (N.I.C.)
- COMPOSITE ALUMINUM FACED PANEL SYSTEM (CA-1) AT WALLS, FASCIAS, AND SOFFITS. INSTALL OVER MEMBRANE DAMPROOFING ON DENS GLASS GOLD SHEATHING. AT CANOPY ROOF, INSTALL OVER MEMBRANE DAMPROOFING ON 1/2" PLYWOOD.
- EXPOSED STEEL BEAM OR COLUMN TO BE PAINTED. RE: STRUCTURAL FOR MEMBER, RE: EXTERIOR MATERIAL SCHEDULE FOR FINISH
- 1/2" EXPANSION JOINT
- CAST IN PLACE CONCRETE BEAM. RE: STRUC.
- DOUBLE BOND BEAM. RE: STRUC.
- PREFINISHED METAL GUTTER. COLOR TO MATCH METAL ROOF SYSTEM.
- EXPOSED PREFINISHED METAL GUTTER. COLOR TO MATCH METAL ROOF SYSTEM. TUCK INTO WIDE FLANGE COLUMN AND FASTEN TO COLUMN WEB. CONNECT TO STORM SEWER. RE: CIVIL STORM PLAN.
- 1/2" PLYWOOD DECK. PAINT TO MATCH SURROUNDING GYP. BD.
- 3/4" PLYWOOD DECK.
- WOOD PANELING ON 1X BLOCKING ON SCHEDULED PARTITION.
- PRE-ENGINEERED ALUMINUM CANOPY SYSTEM
- DOUBLE LAYER GYP. BD. AT WALLS WITH FALSE LINEAR GRILLES
- 1/8" PLATE ALUMINUM ON ALUMINUM ANGLE FRAME. SEPARATE DISSIMILAR MATERIALS.
- ELECTRIC INTERNALLY LIT CLOCK.
- LIGHT FIXTURE.
- 3/4" CDX PLYWOOD
- PROVIDE 1/2" EXTERIOR PLYWOOD IN LIEU OF DENS GLASS SHEATHING AT ALL SIGNAGE LOCATION.
- WOOD SILL EXTENSION WITH PLASTIC LAMINATE FINISH AT SPANDREL GLASS
- WINDOW FRAME SILL RECEIVER SET IN FULL BED OF SEALANT
- ALUMINUM CURTAIN WALL SYSTEM
- POWER OUTLET FOR CLOCK
- METAL JOISTS. RE: STRUCTURAL



A3 North Wall Section
SCALE: 3/4" = 1'-0"



A2 East Wall Section 2
SCALE: 3/4" = 1'-0"



A1 Motor Bank Connection Wall Sec
SCALE: 3/4" = 1'-0"

A5 Key Notes
SCALE: 1/8" = 1'-0"

Thursday, January 12, 2010 3:15 PM