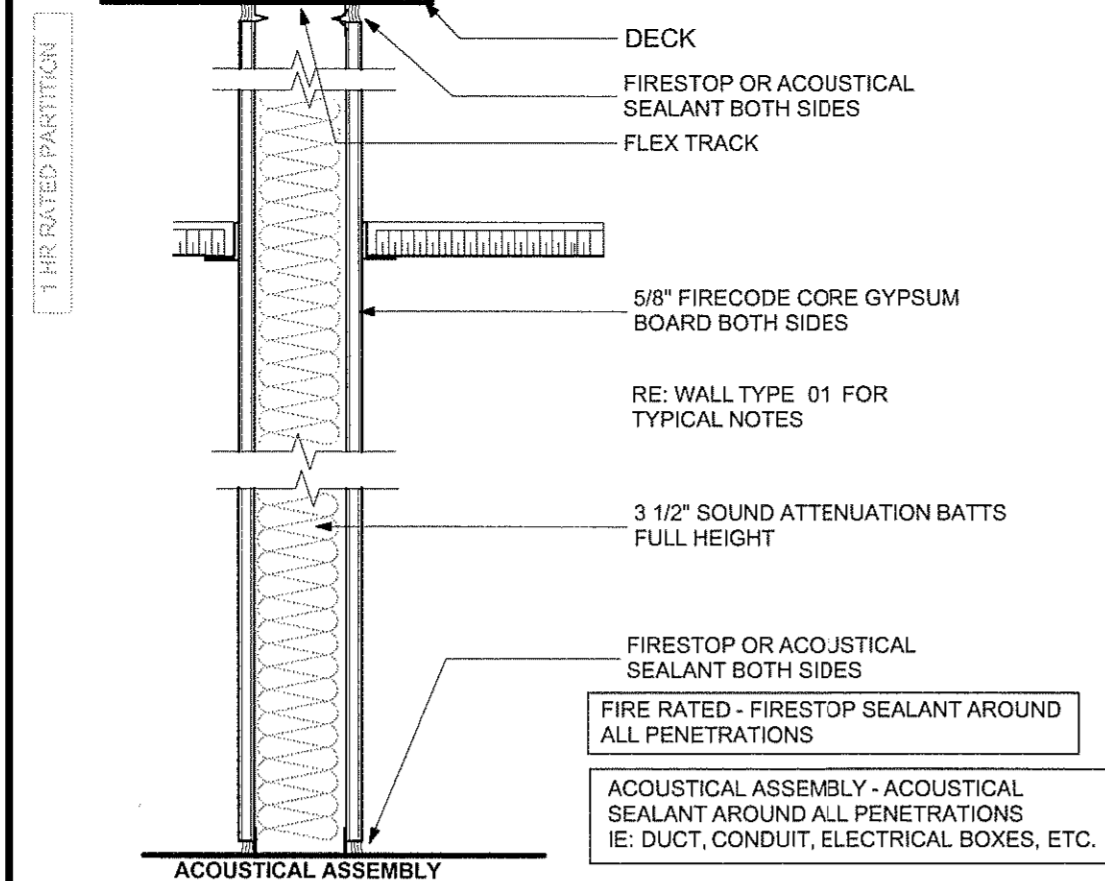
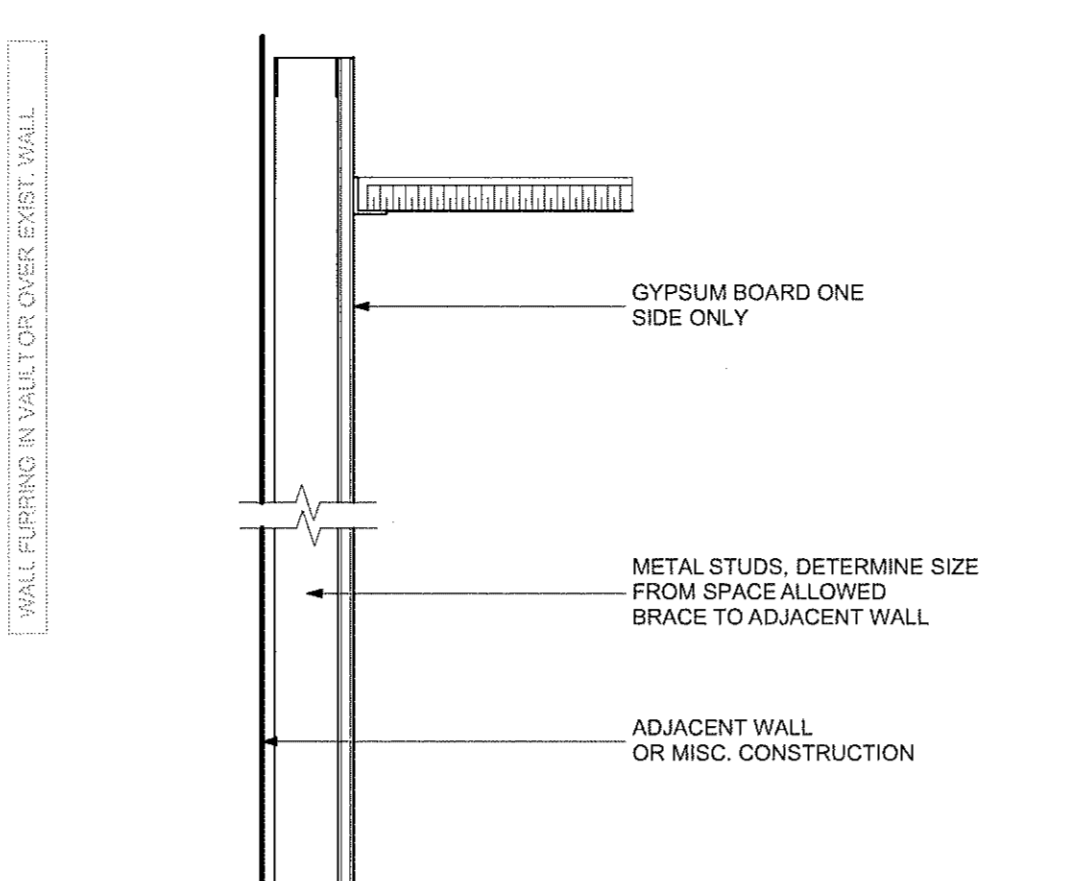


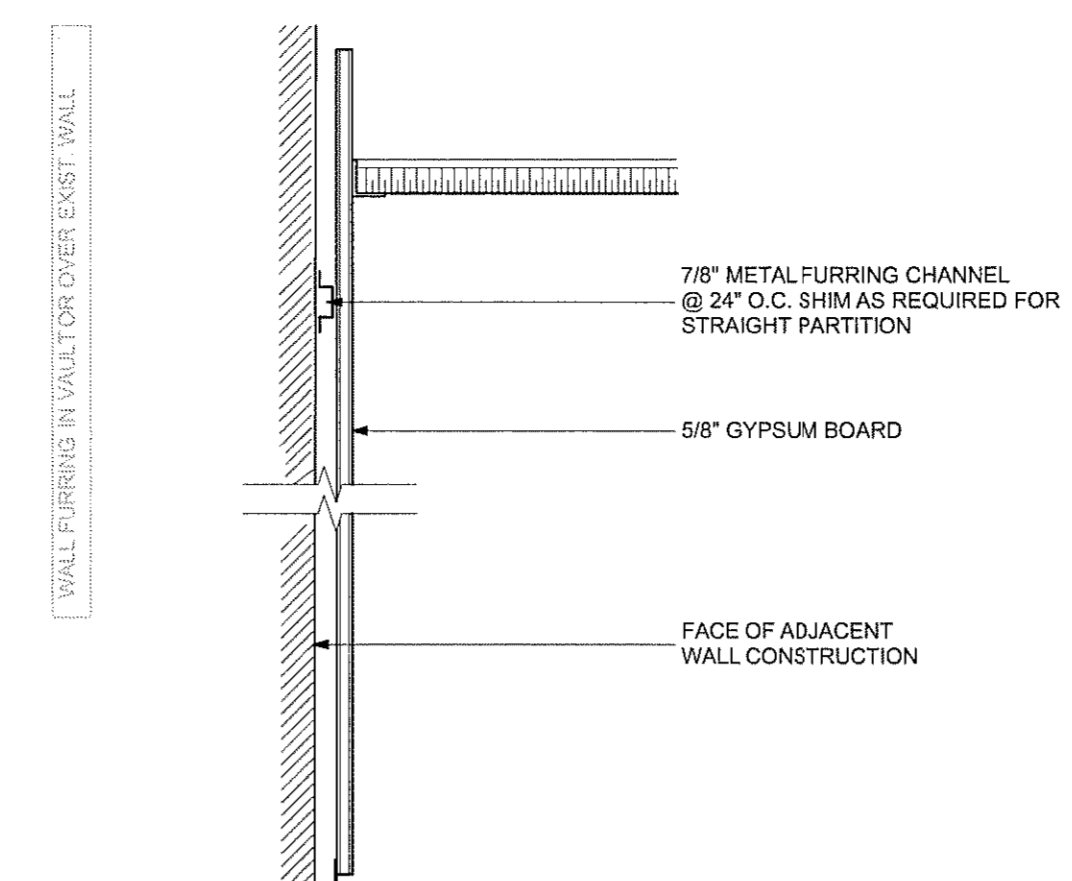
**D1 Partition Type 16**  
SCALE: 1 1/2" = 1'-0"



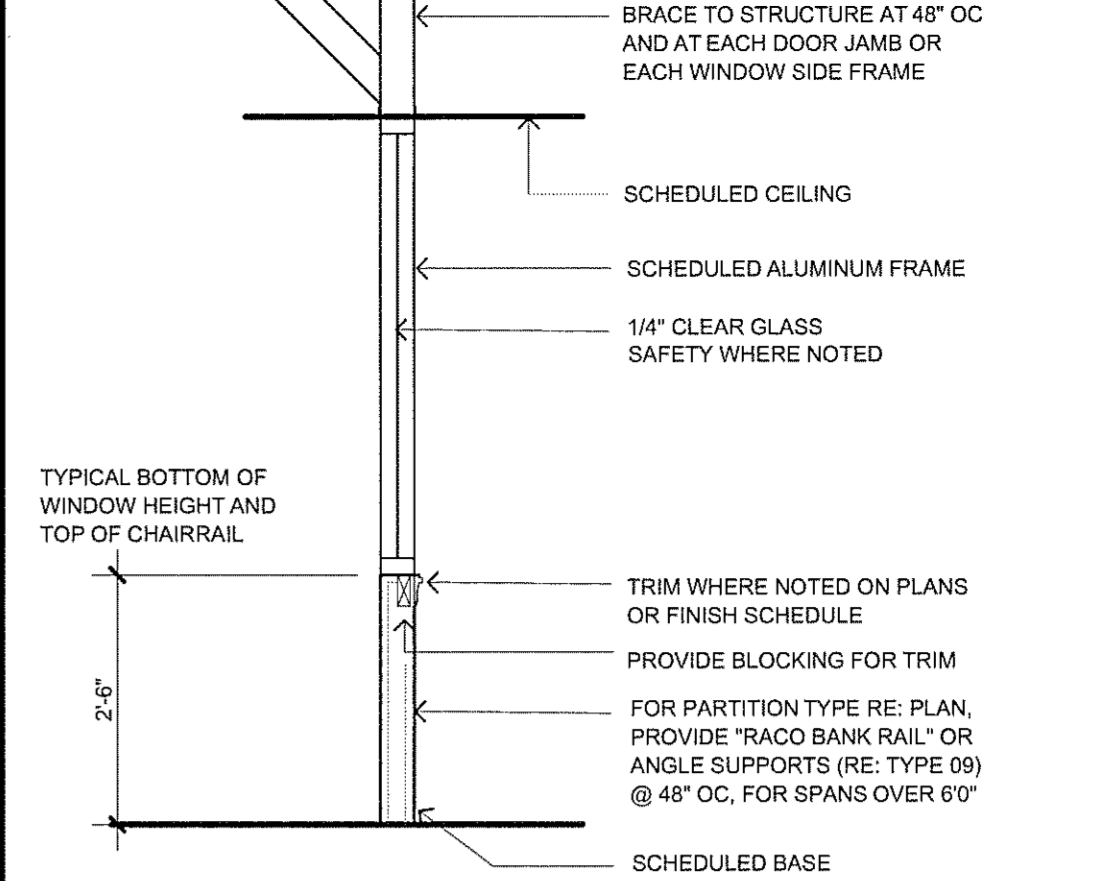
**D2 Partition Type 12**  
SCALE: 1 1/2" = 1'-0"



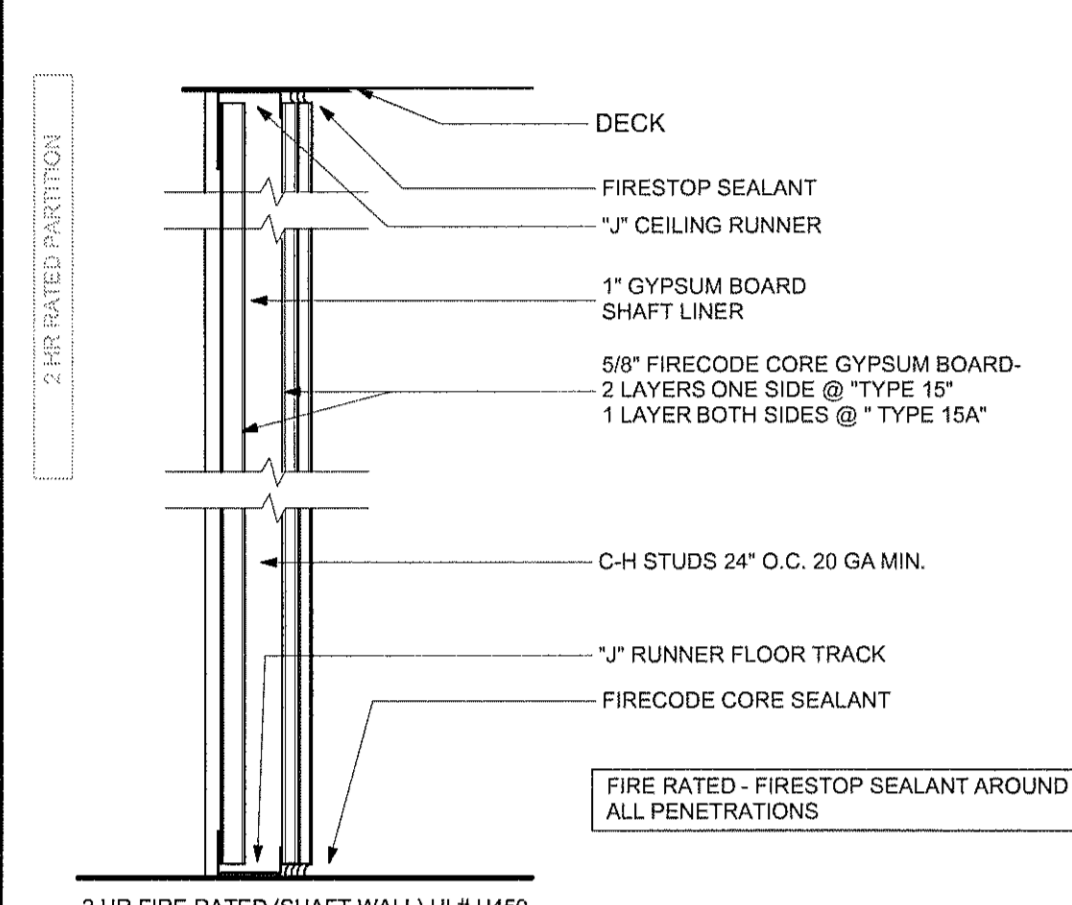
**D3 Partition Type 08**  
SCALE: 1 1/2" = 1'-0"



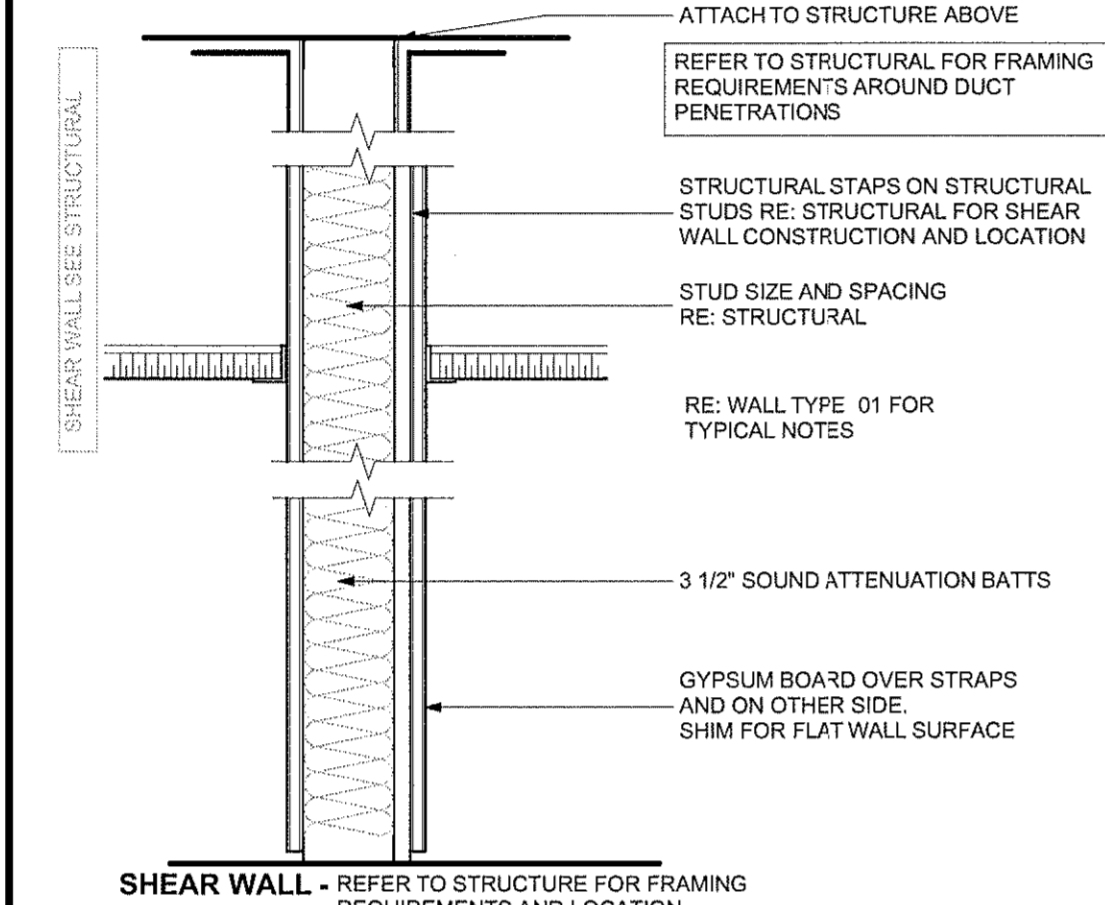
**D4 Partition Type 04**  
SCALE: 1 1/2" = 1'-0"



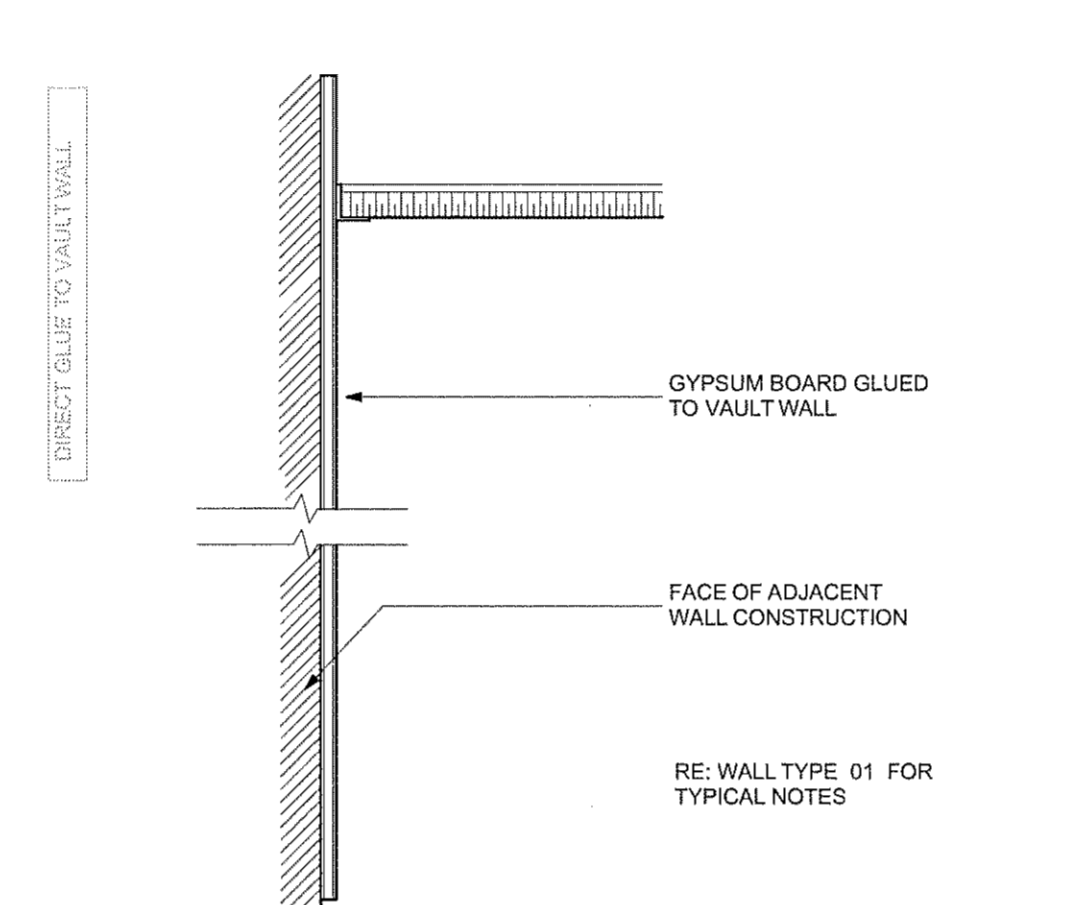
**D5 Partition Requirements**  
SCALE: 1 1/2" = 1'-0"



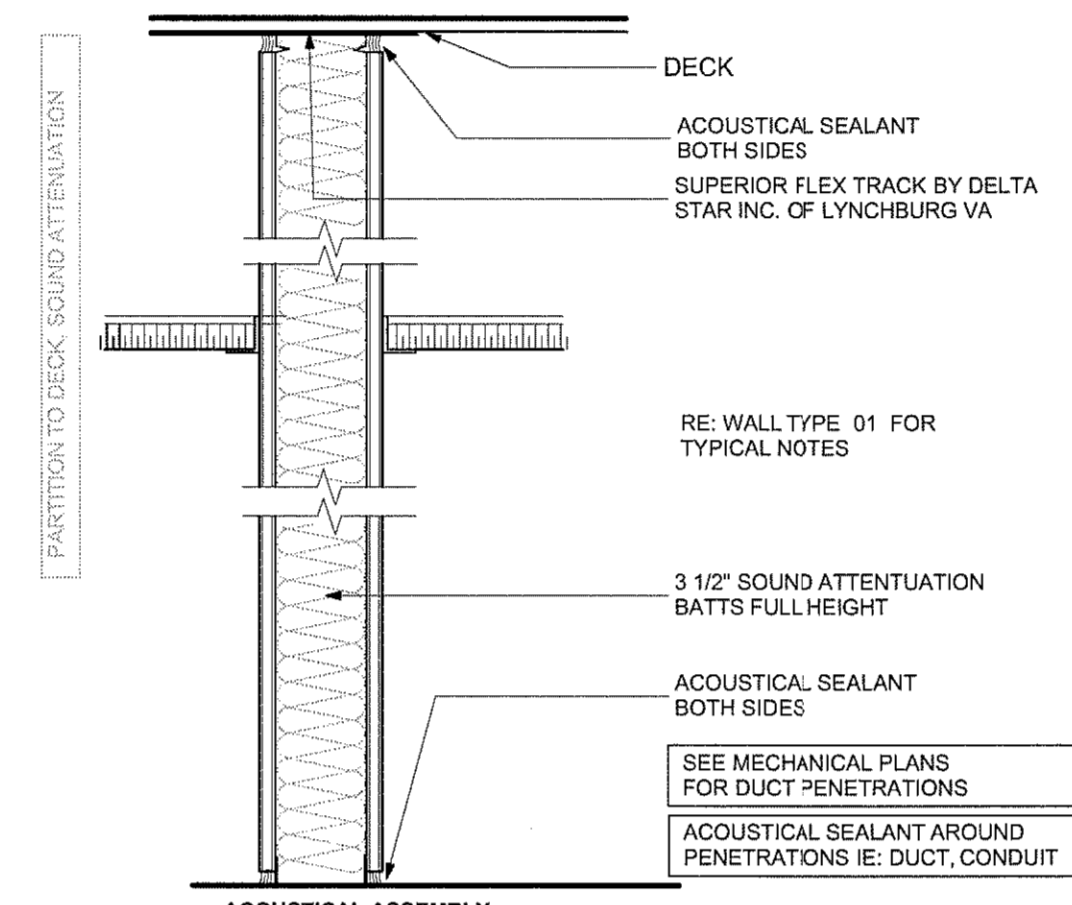
**C1 Partition Type 15 & 15a**  
SCALE: 1 1/2" = 1'-0"



**C2 Partition Type 11**  
SCALE: 1 1/2" = 1'-0"



**C3 Partition Type 07**  
SCALE: 1 1/2" = 1'-0"



**C4 Partition Type 03**  
SCALE: 1 1/2" = 1'-0"

**METAL STUD REQUIREMENTS**

NON-LOAD BEARING PARTITIONS ONLY. PROVIDE STUD WIDTH INDICATED UNDER GENERAL REQUIREMENTS, AND AS NOTED IN PARTITION TYPES. USING GAUGE AND SPACING FOR HEIGHT LIMITATIONS NOTED BELOW. U.N.O. USE ALLOWABLE DEFLECTION OF 1/320 AND 5 psf UNIFORM LOAD PERPENDICULAR TO PARTITION OR 10 psf FOR SHAFT WALLS.

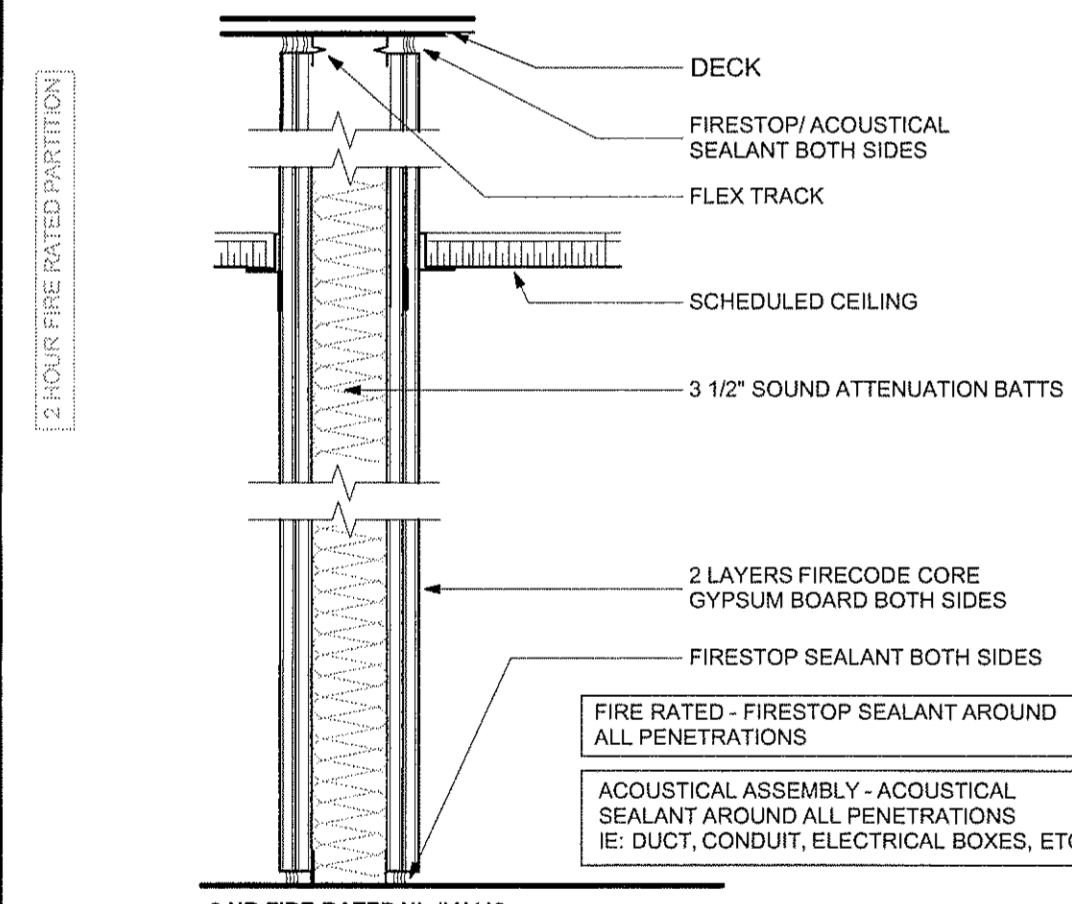
SELECT STUD SIZE, SPACING, AND GAUGE FOR HEIGHTS SHOWN ON DRAWINGS. PER USG SPECIFICATIONS SA 923 AND SA 928 (MINIMUM REQUIRED).

(EXCERPT FROM CHART PAGE 7)	STUD DESIGNATION	SPACING	PARTITION-ONE LAYER GYP. BOARD EACH SIDE	PARTITION-TWO LAYERS GYP. BOARD EACH SIDE	FURRING-ONE LAYER GYP. BOARD
	385ST25	16" O.C.	14'-0"	14'-9"	12'-9"
	385ST20	16" O.C.	15'-7"	17'-8"	15'-0"
	600ST25	16" O.C.	20'-0"	20'-0"	20'-0"
	600ST20	16" O.C.	22'-10"	24'-11"	23'-3"

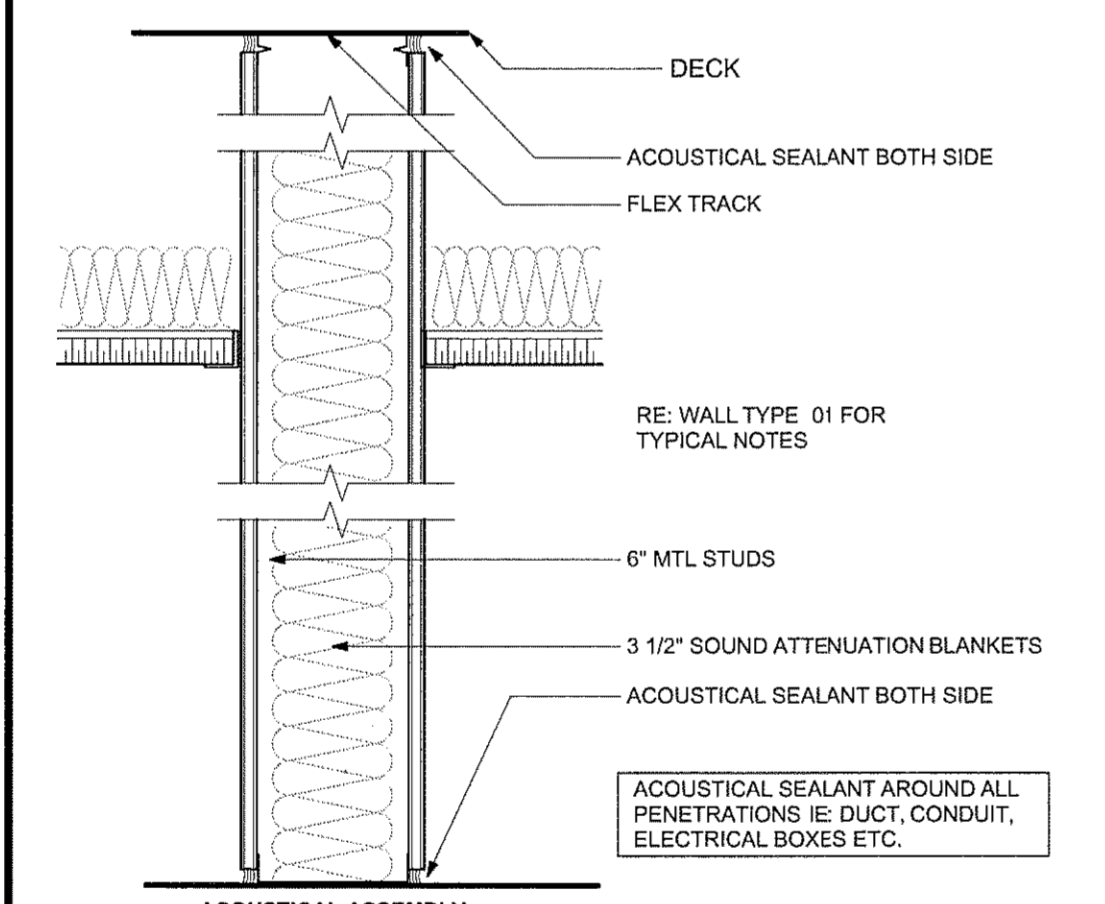
  

SHAFT WALLS	STUD DESIGNATION	SPACING	2-HR RATED	1-HR RATED
	400CH20	24" O.C.	12'-7"	12'-2"
	600CH20	24" O.C.	17'-5"	16'-9"
	600ES20	24" O.C.	21'-0"	19'-6"

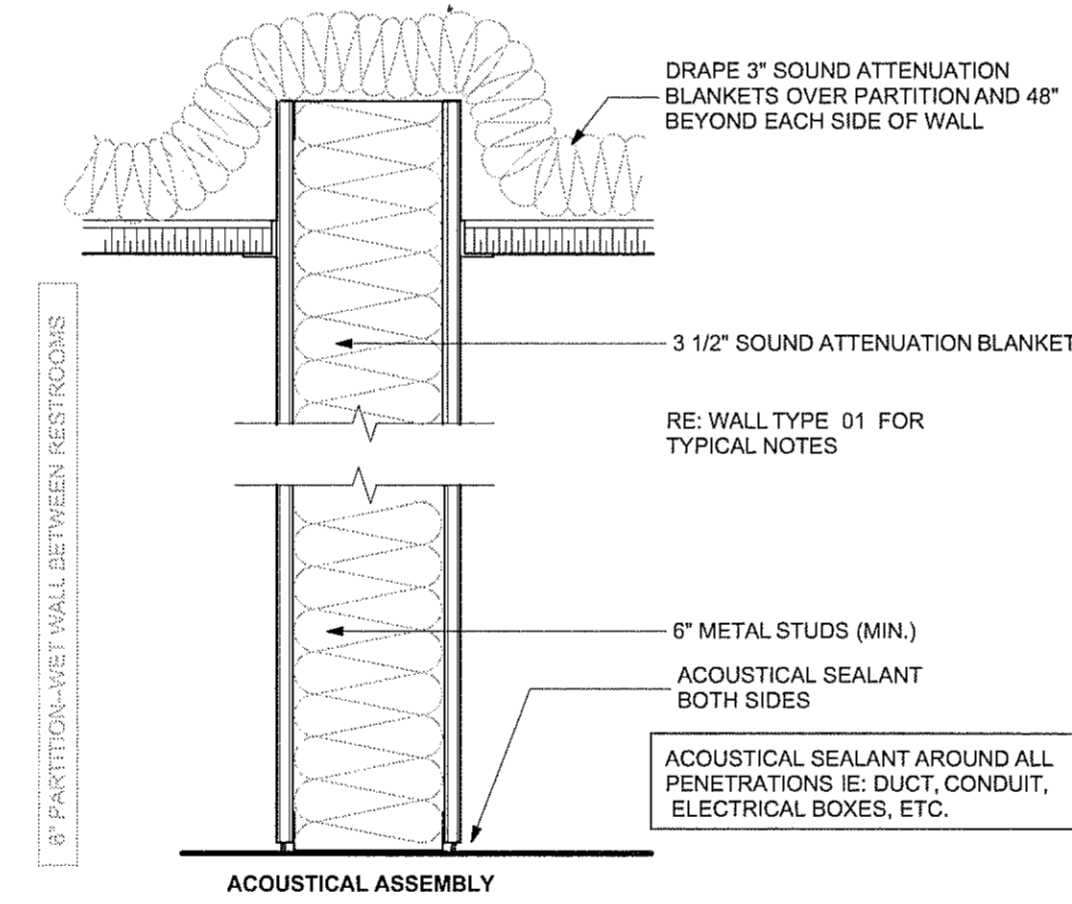
**C5 Partition Requirements**  
SCALE: 1 1/2" = 1'-0"



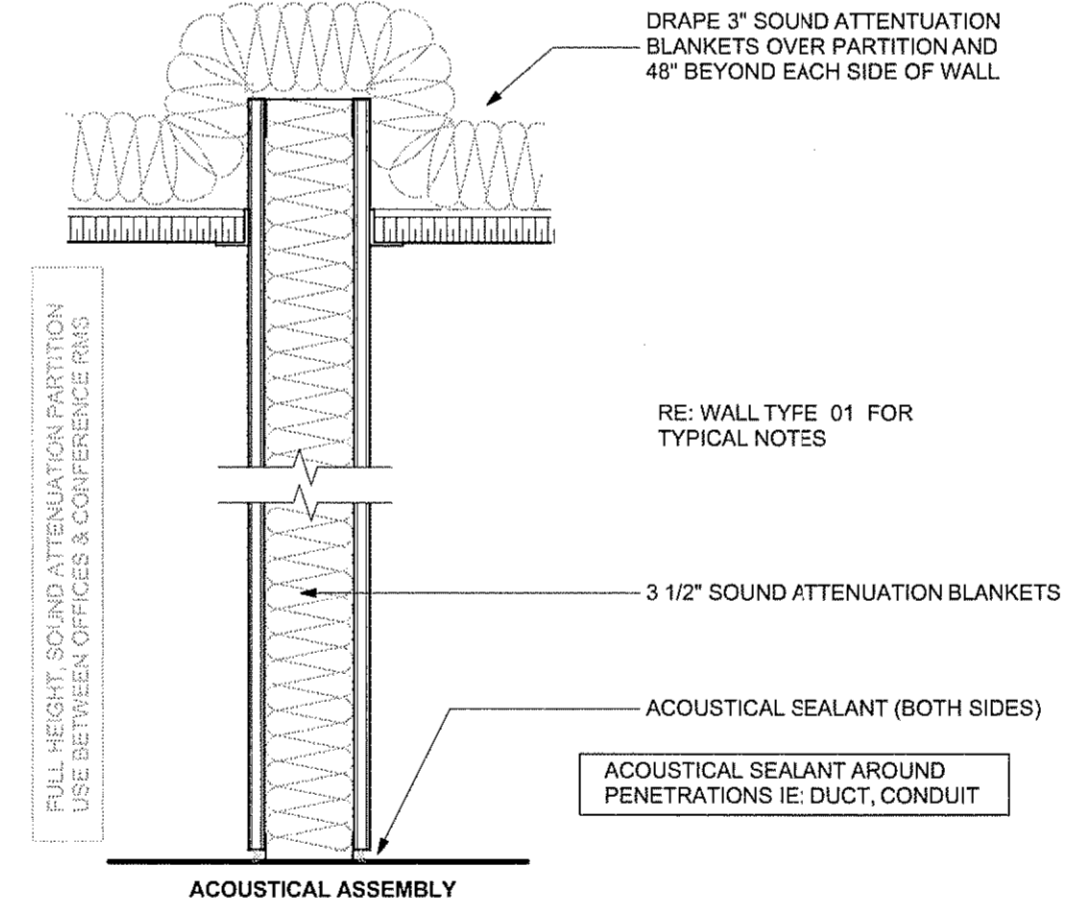
**B1 Partition Type 14**  
SCALE: 1 1/2" = 1'-0"



**B2 Partition Type 10**  
SCALE: 1 1/2" = 1'-0"



**B3 Partition Type 06**  
SCALE: 1 1/2" = 1'-0"

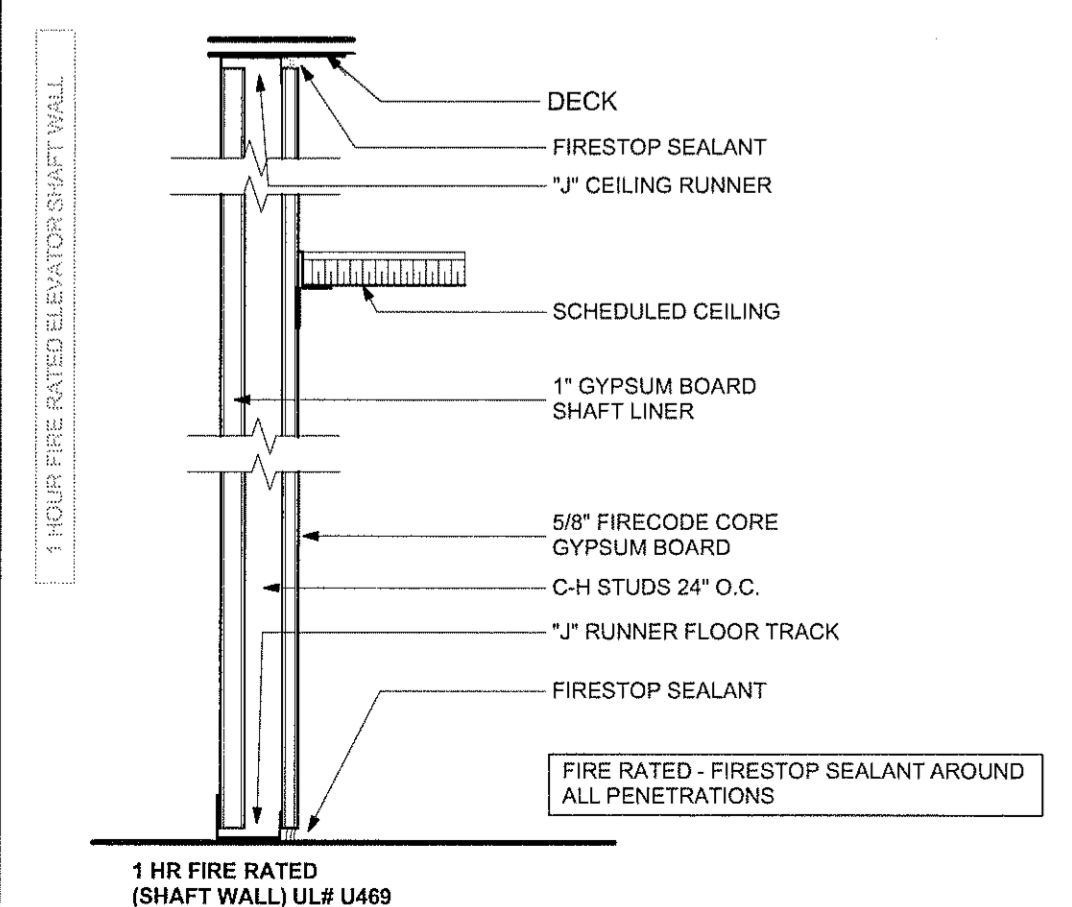


**B4 Partition Type 02**  
SCALE: 1 1/2" = 1'-0"

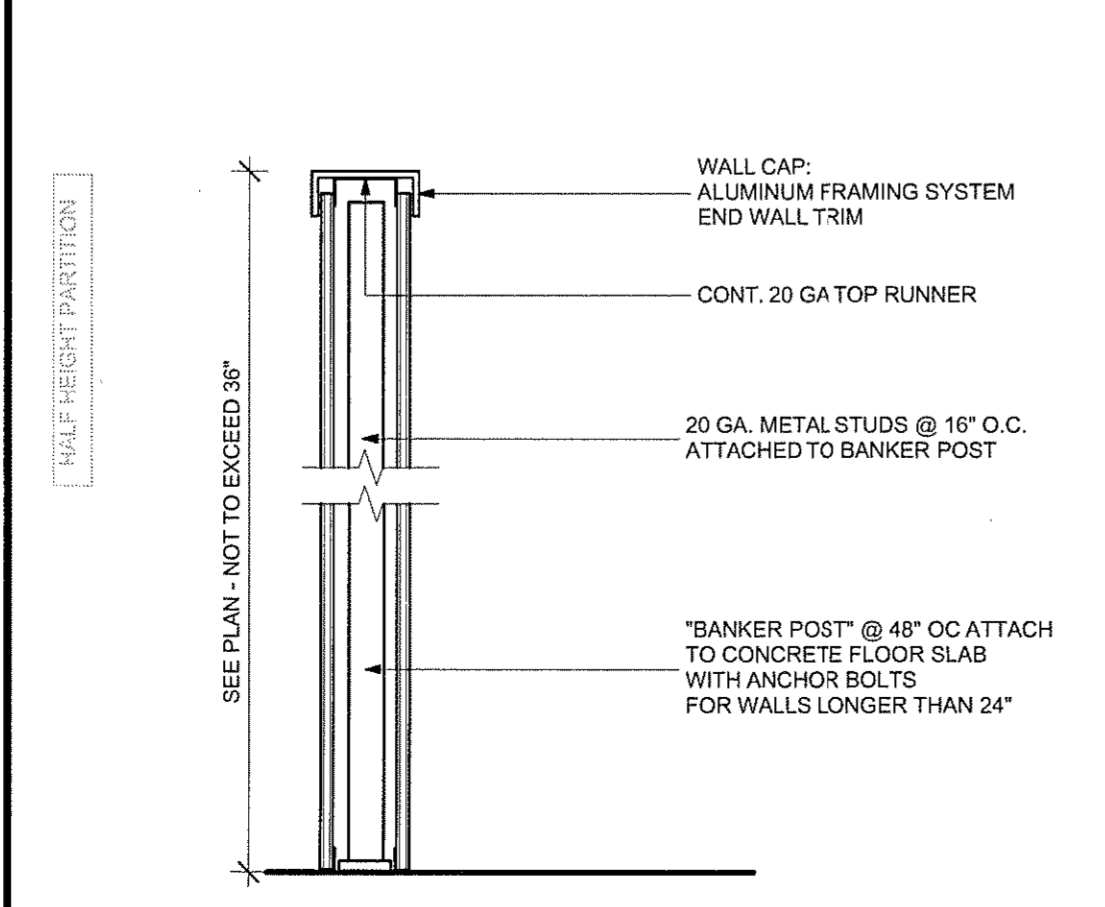
**PARTITION REQUIREMENTS**

- UNLESS NOTED OTHERWISE, TYPICAL METAL STUDS SHALL BE 3 5/8" WIDE. SEE METAL PARTITION STUD CHART FOR STUD GAUGE/HEIGHT LIMITATIONS.
- INTERIOR ALUMINUM FRAME SYSTEM: PROVIDE AS FOLLOWS:  
RACO/ALURA CLASSIC PRESTIGE PARTITION HEAD TRACK, DOOR FRAME AND GLAZING SYSTEM.  
SEE FINISH SCHEDULE FOR FRAME FINISHES.
- PROVIDE CONCEALED 2 X WOOD BLOCKING FOR WALL ATTACHED EQUIPMENT, OF APPROPRIATE SIZE AND SPACING TO SUPPORT DESIGN LOADS.
- PROVIDE FIRE BLOCKING, 2 X LUMBER, OR APPROVED EQUIVALENT, - IN CONCEALED SPACES OF STUD WALLS AND PARTITIONS, INCLUDING FURRED SPACES, AT CEILING AND FLOOR LEVELS, AND AT 10' (MAX) INTERVALS, VERTICAL AND HORIZONTAL, U.N.O.  
- AT ALL INTERCONNECTIONS BETWEEN CONCEALED VERTICAL AND HORIZONTAL SPACES SUCH AS OCCUR AT SOFFITS, DROP CEILING, AND COVE CEILING.
- PROVIDE WATER RESISTANT BOARD (FIBEROCK) AT WET AREAS. THIS REQUIRES 20 GAUGE STUDS. PROVIDE ON ALL WALL INSIDE RESTROOMS AND JANITOR ROOMS, AND AT OTHER PLUMBING FIXTURES WHERE WATER IS PRESENT.
- PARTITIONS SHALL BE CENTERED ON EXTERIOR WINDOW MULLIONS OR CENTER LINE OF COLUMNS U.N.O.
- PARTITIONS ABUTTING WINDOW MULLIONS SHALL NOT BE ATTACHED BY MECHANICAL FASTENERS. PROVIDE ALUMINUM END WALL CAP, CLOSURE PANEL AND COMPRESSION PAD. PROVIDE SEALANT ON BOTH SIDES OF PAD AT ACOUSTICAL PARTITION. TAPE, FLOAT, AND PREPARE PARTITIONS FOR SCHEDULED FINISH.
- ALL GYPSUM BOARD TO BE 5/8", FIRECODE (FIRE RATED), UNLESS NOTED OTHERWISE. PROVIDE CORNER BEADS AT VERTICAL AND HORIZONTAL OUTSIDE CORNERS, FASTENED THROUGH GYPSUM BOARD TO STUDS.
- FLOAT-OUT GYPSUM BOARD SOLID AND STRAIGHT AT ALL BASE AND TRIM CONDITIONS. NON-FLAT WALLS AT CORNERS, ETC. ARE NOT ACCEPTABLE AT MILLWORK CONDITIONS.
- PLACE STUDS IN DIRECT CONTACT WITH ALL OPENING FRAME JAMBS, ABUTTING PARTITIONS, PARTITION CORNERS AND EXISTING CONSTRUCTION.
- ANCHOR FLOOR RUNNERS TO FLOOR SUBSTRATE, AND HEAD TRACKS TO CEILING GRID/BOTTOM OF DECK, @ 24" O.C., U.N.O.
- WHERE SOUND ATTENUATION BATTS ARE NOTED, USE THE FOLLOWING THICKNESS:  
2 1/2" STUD WALLS: 2 1/2" THICKNESS.  
3-5/8" STUD WALLS: 3 1/2" THICKNESS.  
AT CEILINGS: 3-1/2" THICKNESS (48" EACH SIDE OF PARTITION)
- SEE PROJECT MANUAL SECTION 09250 FOR ADDITIONAL REQUIREMENTS. SEE FLOOR PLAN FOR PARTITION TYPE LOCATIONS. SEE FINISH SCHEDULE FOR WALL FINISHES, WALL BASE FRAME FINISH AND CEILING TYPES.

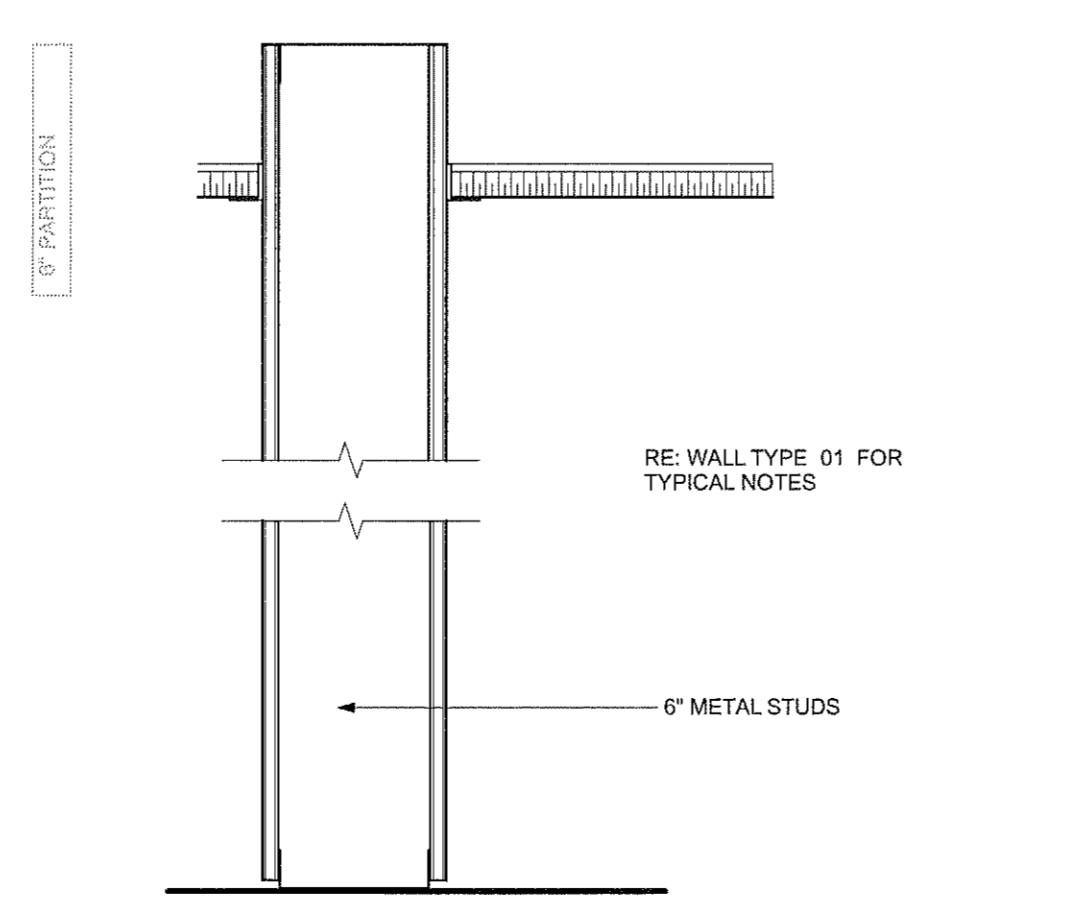
**B5 Partition Types**  
SCALE: 1 1/2" = 1'-0"



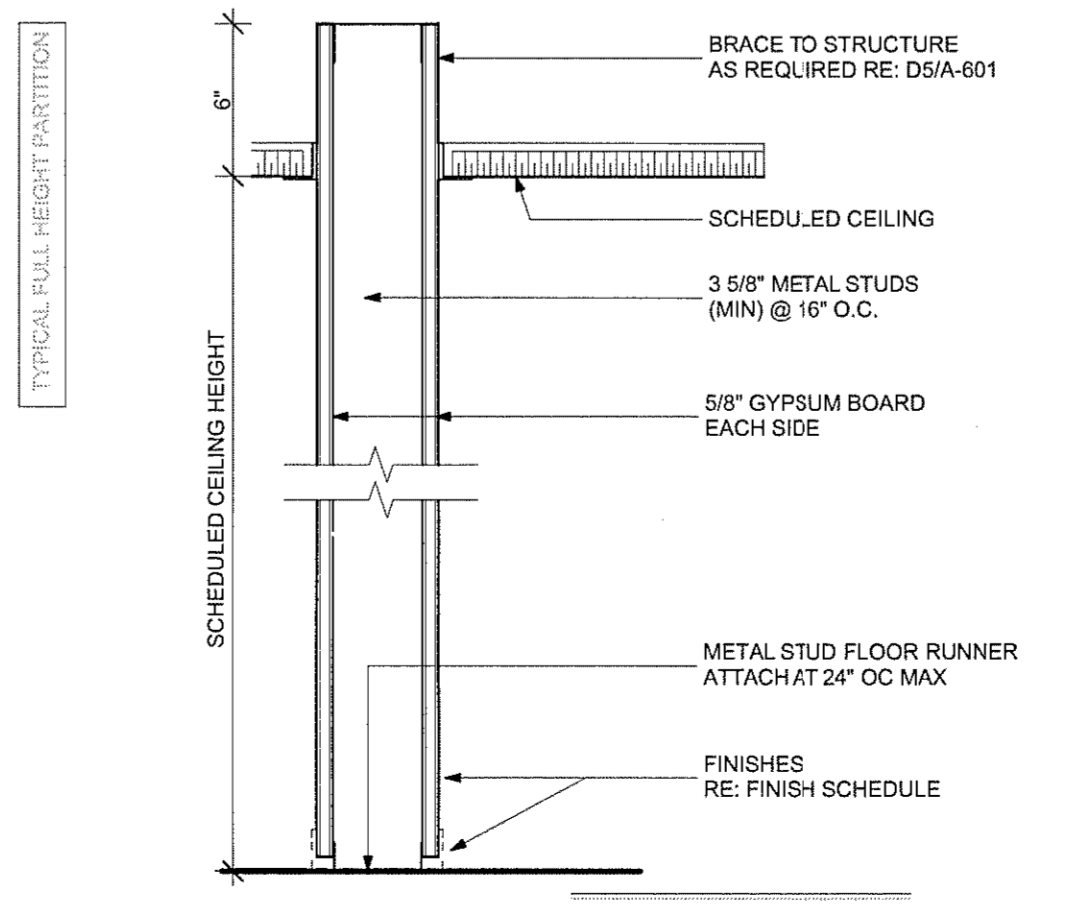
**A1 Partition Type 13**  
SCALE: 1 1/2" = 1'-0"



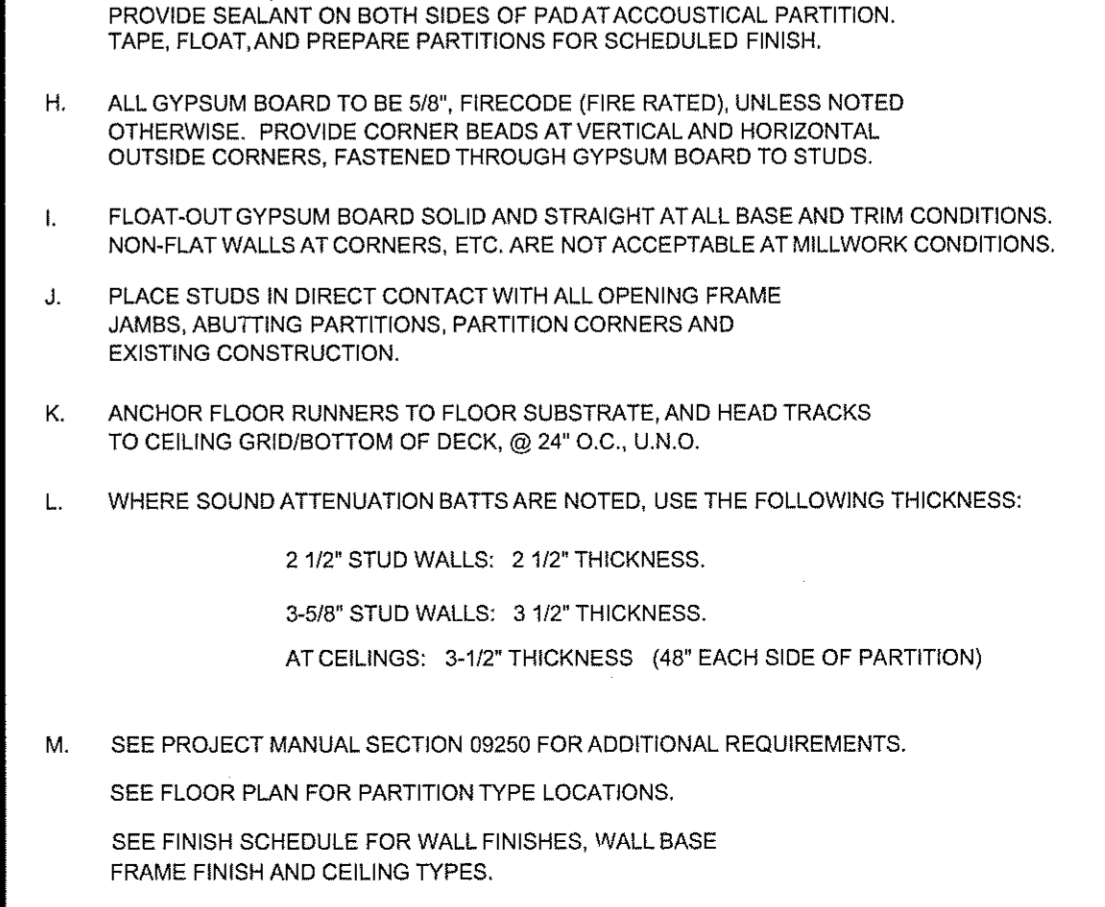
**A2 Partition Type 09**  
SCALE: 1 1/2" = 1'-0"



**A3 Partition Type 05**  
SCALE: 1 1/2" = 1'-0"



**A4 Partition Type 01**  
SCALE: 1 1/2" = 1'-0"



**A5 Partition Types**  
SCALE: 1 1/2" = 1'-0"



ARCHITECTURE  
PLANNING  
INTERIOR DESIGN

2425 WEST LOOP SOUTH  
SUITE 665  
HOUSTON TEXAS 77027  
FAX 713-552-9810  
713-552-0707  
WWW.MGARCHITECTS.COM

**CONSULTANTS**

STRUCTURAL ENGINEER:  
SCA Consulting Engineers  
  
M/E/P/ ENGINEER:  
Henderson Engineers

*Small signature*



**Aloma Walk Branch**  
**Aloma Ave.**  
**Oviedo, FL 32765**

**ISSUE:**

MARK	DATE	DESCRIPTION
	08-19-09	D.D. REVIEW
	09-15-09	DEVELOPER REVIEW
	10-12-09	PRICING
	12-02-09	BUILDING PERMIT

PROJECT NO:  
**09-529.a**

**PARTITION SCHEDULE**

**A-601**