

Interior Hardware Sets

HW Set #1C - Passage w/Closer

- 4 ea. Hinges - Ives 5BB1 - 4.5 x 4
- 1 ea. Passage Set - Schlage ND10S ATH 10-025 x K510-066
- 1 ea. Wall Stop - Ives WS407CCV
- 1 ea. Closer - LCN 4031/4131 with HO

HW Set #1CD - Passage w/Closer

- 4 ea. Hinges - Ives 5BB1 - 4.5 x 4
- 1 ea. Passage Set - Schlage ND10S ATH 10-025 x K510-066
- 1 ea. Wall Stop - Ives WS407CCV
- 1 ea. Closer - LCN 4031/4131 with HO
- 1 ea. Single Cylinder Deadbolt - Schlage

HW Set #3 - Storeroom Lock

- 4 ea. Hinges - Ives 5BB1 4.5 x 4
- 1 ea. Storeroom Lockset-Schlage ND80RD ATH 10-025 x K510-066
- 1 ea. Wall Stop - Ives WS407CCV

HW Set #3-C - Storeroom Lock w/Closer

- 4 ea. Hinges - Ives 5BB1 4 1/2 x 4
- 1 ea. Storeroom Lockset-Schlage ND80RD ATH 10-025 x K510-066
- 1 ea. Closer - LCN 4031/4131 with HO
- 1 ea. Wall Stop - Ives WS407CCV

HW Set #4 - Classroom Lock

- 4 ea. Hinges - Ives 5BB1 4.5 x 4
- 1 ea. Classroom Lockset - Schlage ND70RD ATH 10-025 x K510-066
- 1 ea. Wall Stop - Ives WS407CCV

HW Set #5 - Privacy Lock

- 4 ea. Hinges - Ives 5BB1 4.5 x 4
- 1 ea. Privacy Lockset - Schlage ND40S ATH 10-025 x K510-066
- 1 ea. Wall Stop - Ives WS407CCV

HW Set #4C - Classroom Lock w/Closer

- 4 ea. Hinges - Ives 5BB1 4.5 x 4
- 1 ea. Classroom Lockset - Schlage ND70RD ATH 10-025 x K510-066
- 1 ea. Closer - LCN 4031/4131 with HO
- 1 ea. Wall Stop - Ives WS407CCV

HW #5C - Privacy Lock w/Closer

- 4 ea. Hinges - Ives 5BB1 4.5 x 4
- 1 ea. Privacy Lockset - Schlage ND40S ATH 10-025 x K510-066
- 1 ea. Closer - LCN 4031/4131
- 1 ea. Wall Stop - Ives WS407CCV

HW Set #7V - Mechanical Push Button Lock w/Viewer

- 4 ea. Hinges - Ives 5BB1 4.5 x 4
- 1 ea. Lockset - Lockseties PRO 5196 x 17 x LFS ANSI strike with box
- 1 ea. Closer - LCN 4030/4130
- 1 ea. Wall Stop - Ives WS407CCV
- 1 ea. Viewer - Image Wonder Enterprises (877-966-6473) - "Super Wide Angle Viewer" (install at 58" AFF)
- 1 ea. Schlage Core 23-030

Exterior Hardware Sets

HW Set #17 - Pair Storefront with Exit Devices

- By Hardware Supplier:
- 3 ea. Cylinder - Schlage 20-062 (one cylinder for entrance) x req'd cam
- 2 ea. Pulls - Ives 8190-0 x O
- By Door Supplier:
- 2 st. Pivots - Ives 7215
- 2 ea. Intermediate Pivots - Ives 7215 INT
- 1 ea. Duetproof Strike DPI
- 2 ea. Exit Device - Adams Rite 8600-CD x 8066-00, complying with IBC Section 1003.3.1.9 Panic and fire exit hardware
- 2 ea. Closers - LCN 2031/2034 x 2030-3038HB with 105 deg hold open
- 1 ea. Threshold - Zero 65A
- 2 st. Gasketing - Zero 328A

Option at Owner's Request:

- 1 or 2 ea. Bottom Rail Deadbolt locks - Adams Rite with cylinders both sides (comply with IBC Section 1003.3.1.8 including sign stating "THIS DOOR TO REMAIN UNLOCKED WHEN BUILDING IS OCCUPIED")

HW Set #17C - Pair Storefront Vestibule - No Lock

- By Hardware Supplier:
- 2 ea. Offset Pull / Pushbar Combo - Ives 9190-33-0-32D-NO
- By Door Supplier:
- 2 st. Pivots - Ives 7215
- 2 ea. Intermediate Pivots 7215 INT
- 2 ea. Closers 2031/2033 x 2030-3038HB

HW Set #19A - Single Storefront Vestibule - No Lock

- By Hardware Supplier:
- 1 ea. Offset Pull / Pushbar Combo - Ives 9190-33-0-32D-NO
- By Door Supplier:
- 1 st. Pivots - Ives 7215
- 1 ea. Intermediate Pivots - Ives 7215 INT
- 1 ea. Closers - LCN 2031/2033 x 2030-3038HB with 105 deg hold open

HW Set #20 - Single Hollow Metal Clock Tower Door

- 2 ea. Hinges - Ives 5BB1HW 4.5 x 4 x NRP x Stainless Steel
- 1 ea. Storeroom Lock - Schlage ND80RD ATH 10-025 X K510-066
- 1 ea. Set Seals By Door Manufacturer B/O
- 1 ea. Drip Cap - NGP 16A
- 1 ea. Drip Cap - NGP 16DKB
- 1 ea. Threshold - NGP-896V-AL

DOOR SCHEDULE

LEGEND

X = EXISTING DOOR, NO WORK, U.N.O.
 HW = HOLLOW METAL
 UL = UNDERWRITERS LABORATORY FIRE RATING

DR = DOOR
 FR = FRAME
 H = HEAD

J = JAMB
 S = SILL
 HW = HARDWARE

Project 09-529.A

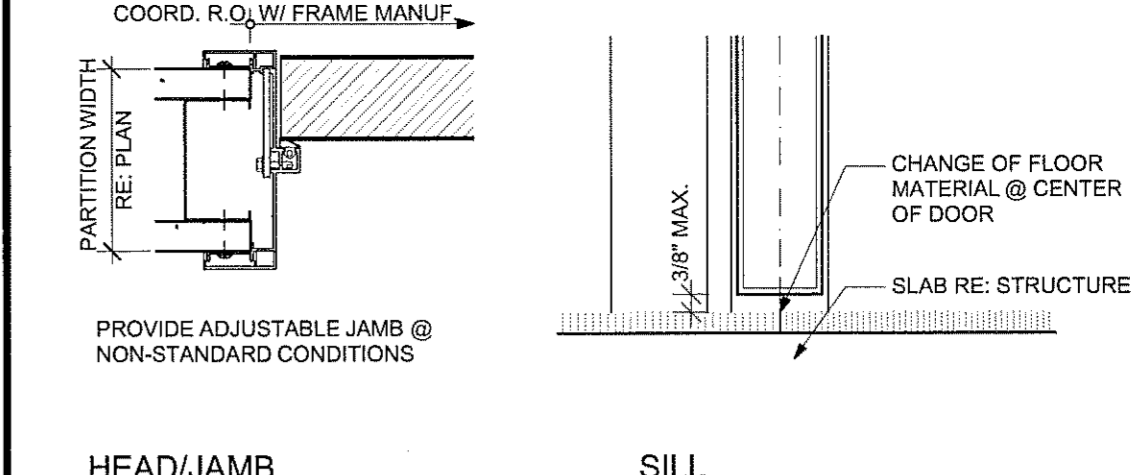
#	TYPE	DIMENSIONS	DESCRIPTION	UL	FRAME	H	J	S	DR	FR	FINISH	HW SET	REMARKS	ROOM REFERENCE
101A	PP	6'-0" X 8'-0"	ALUM AND GLASS		AL				SP-1	SP-1	17		NOTE 1	ENTRY
101B	PP	6'-0" X 8'-0"	ALUM AND GLASS		AL				SP-1	SP-1	17			VESTIBULE
101C	P	3'-0" X 8'-0"	ALUM AND GLASS		AL				SP-1	SP-1	19A			VESTIBULE
102	C.O.	3'-0" X 7'-10 1/2"	CASED OPENING		AL						IAF-1			ALCOVE
103	A	3'-0" X 7'-10 1/2"	S.C. WOOD		AL				PLA	IAF-1	5C		NOTE 2	RESTROOM
104	B	3'-0" X 7'-10 1/2"	FULL GLASS WOOD DOOR		AL				PLA	IAF-1	10D			CONFERENCE
106	B	3'-0" X 7'-10 1/2"	FULL GLASS WOOD DOOR		AL				PLA	IAF-1	4			OFFICE
108	B	3'-0" X 7'-10 1/2"	FULL GLASS WOOD DOOR		AL				PLA	IAF-1	4			AREA PRES.
109			VAULT DOOR											VAULT
110	A	3'-0" X 7'-10 1/2"	S.C. WOOD		AL				PLA	IAF-1	5			COUPON BOOTH
112	A	3'-0" X 7'-10 1/2"	S.C. WOOD		AL				PLA	IAF-1	3C			ELEC
113	A	3'-0" X 7'-10 1/2"	S.C. WOOD		AL				PLA	IAF-1	3			DATA
114	A	3'-0" X 7'-10 1/2"	S.C. WOOD		AL				PLA	IAF-1	1C			STORAGE
115	A	3'-0" X 7'-10 1/2"	S.C. WOOD		AL				PLA	IAF-1	7V			TELLER WORK
116	A	3'-0" X 7'-10 1/2"	S.C. WOOD		AL				PLA	IAF-1	7V			MB TELLERS
117	A	3'-0" X 7'-10 1/2"	S.C. WOOD		AL				PLA	IAF-1	1C			BREAK
118	A	3'-0" X 7'-10 1/2"	S.C. WOOD		AL				PLA	IAF-1	1C			HALL
119	A	3'-0" X 7'-10 1/2"	S.C. WOOD		AL				PLA	IAF-1	4C			JANITOR
120	A	3'-0" X 7'-10 1/2"	S.C. WOOD		AL				PLA	IAF-1	5C		NOTE 2	MEN RR
121	A	3'-0" X 7'-10 1/2"	S.C. WOOD		AL				PLA	IAF-1	5C		NOTE 2	WOMEN RR
201	A	3'-6" X 2'-6"	HOLLOW METAL		HM				EP-1	EP-1	20			CLOCK TOWER

NOTE 1: PROVIDE A SIGN ADJACENT TO THE DOOR STATING "THIS DOOR TO REMAIN UNLOCKED WHEN BUILDING IS OCCUPIED". LETTERS 1" HIGH ON A CONTRASTING BACKGROUND.

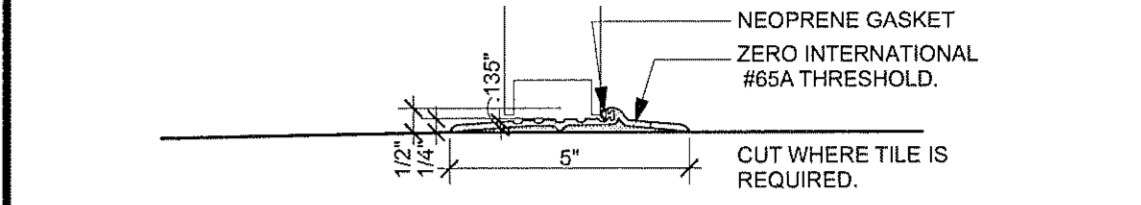
NOTE 2: PROVIDE "MEN" OR "WOMEN" SIGN ADJACENT TO THE DOOR AS SPECIFIED ON DETAIL B5-A541.

NOTE 3: PROVIDE FLOOR STOP IVES FS436 (FINISH TO MATCH DOOR LEVER, IN LIEU OF WALL STOP.

SEE GENERAL NOTES AND REQUIREMENTS FIRST. SCHEDULE IS FOR EXCEPTIONS AND CLARIFICATIONS.

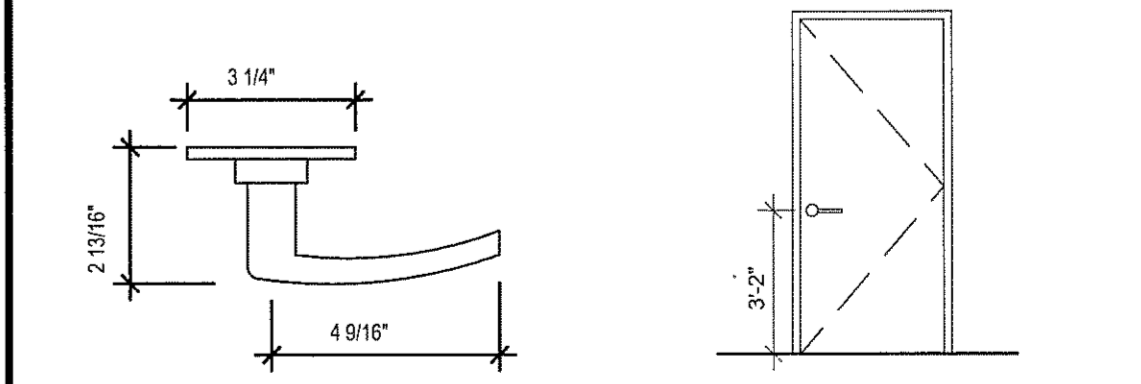


D5 Typ. Interior Frame Details
3" = 1'-0"



C5 Typ. Exterior Sill Detail
3" = 1'-0"

- A. EXTERIOR DOORS ARE MEDIUM STILE. EQUAL TO KAWNEER 350 U.N.O. PREFINISHED AS NOTED ON EXTERIOR MATERIALS SCHEDULE
- B. EXTERIOR GLAZING IS TINTED EXCEPT AT THE ENTRANCE WHERE THE DOORS AND SIDE LITES ARE CLEAR SAFETY GLASS AS REQUIRED BY CODE. AS A MINIMUM, PROVIDE SAFETY GLASS WITHIN 24" OF EITHER VERTICAL EDGE OF A DOOR IF THE GLASS IS WITHIN 60" OF THE FLOOR. ALSO, GLASS WITHIN 18" OF THE FLOOR WHEN THE TOP IS 36" OR GREATER FROM THE FLOOR, AND THE AREA IS 9 S.F. OR GREATER.
- C. EXTERIOR WINDOW FRAMING TO BE ALUMINUM STOREFRONT SYSTEM U.N.O.
- D. INTERIOR ALUMINUM FRAMES ARE RACO "CLASSIC PRESTIGE OR FREESTANDING". FACTORY FINISHED AS NOTED ON INTERIOR MATERIALS SCHEDULE
- E. INTERIOR DOORS ARE SOLID CORE WOOD WITH FINISH NOTED ON INTERIOR MATERIALS SCHEDULE
- F. INTERIOR GLAZING: 1/4" OR 3/8" (AS REQUIRED BY CODE) CLEAR POLISHED PLATE. SAFETY GLASS AS NOTED AND REQUIRED BY CODE. AS A MINIMUM, PROVIDE SAFETY GLASS WITHIN 24" OF EITHER VERTICAL EDGE OF A DOOR IF THE GLASS IS WITHIN 60" OF THE FLOOR. ALSO GLASS WITHIN 18" OF THE FLOOR WHEN THE TOP IS 36" OR GREATER FROM THE FLOOR, AND THE AREA IS 9SF OR GREATER.
- G. ALL DOOR LEVERS TO BE MOUNTED @ 3'-2" A.F.F. ALL LEVERS SHALL HAVE A SHAPE THAT IS EASY TO GRASP WITH ONE HAND AND DOES NOT REQUIRE TIGHT GRASPING, OR TWISTING OF THE WRIST TO OPERATE.
- H. DOOR CLOSERS ARE TO BE ADJUSTED SO THAT THE SWEEP PERIOD OF THE CLOSER FROM AN OPEN POSITION OF 70 DEGREES WILL TAKE AT LEAST 3 SECONDS TO MOVE TO AN OPEN POSITION OF APPROXIMATELY 12 DEGREES.
- I. DOOR OPENING FORCE FOR PUSHING AND PULLING OPEN HINGED DOOR SHALL BE APPLIED PERPENDICULAR TO THE DOOR AT THE DOOR OPENER OR 30 INCHES FROM THE HINGED SIDE, WHICHEVER IS FURTHER FROM THE EDGE.
- J. INTERIOR HINGED DOORS SHALL REQUIRE AN OPENING FORCE NOT EXCEEDING 5 LBF.
- K. EXTERIOR THRESHOLD SHALL MEET ADA REQUIREMENTS HEIGHT IS NOT TO EXCEED 1/2" CHANGE OF LEVEL OVER 1/4". REQUIRES 1/2 BEVEL.
- L. PROVIDE TEMPERED SAFETY GLASS WHERE NOTED 'SG' AND AS REQUIRED BY CODES, INCLUDING DOORS, GLASS WITHIN 24" OF DOORS, AND WHERE BOTTOM EDGE IS WITHIN 60" OF FINISHED FLOOR.
- M. DETERGENT CLEAN ALL INTERIOR AND EXTERIOR GLAZING, FRAMES AND DOORS AT SUBSTANTIAL COMPLETION.
- N. AT FULL HEIGHT DOORS, SET FRAME HEAD AT ESTABLISHED CEILING HEIGHT (USING LASER LEVELING DEVICE). MEASURE DOORS DOWN FOR 1/4" TO 3/8" MAXIMUM UNDERCUT, U.N.O.
- O. REFER TO INTERIOR MATERIALS SCHEDULE FOR HARDWARE FINISH. HINGE AND CLOSER FINISH TO MATCH DOOR FRAME FINISH, U.N.O.
- P. PROVIDE CONSTRUCTION KEYING, TENANT TO PROVIDE FINAL KEYING.
- Q. HARDWARE SPECIFICATION IS HEAVY DUTY COMMERCIAL BASED ON SCHLAGE, D SERIES ATHENS DESIGN. SARGENT 10 LINE L LEVER OR CORBIN CL SERIES ARE ACCEPTABLE SUBSTITUTE MANUFACTURERS.
- R. AT SUBSTANTIAL COMPLETION ADJUST HARDWARE TO WORK SMOOTHLY, FUNCTION PROPERLY AND BE FREE OF DIRT, SCRATCHES AND DEFECTS.
- S. PROVIDE SIGN AT ENTRY DOORS THAT ARE LOCKED, STATING "THESE DOORS TO REMAIN UNLOCKED DURING BUSINESS HOURS". ALLOW \$100 PER SIGN.
- T. VERIFY WITH THE ARCHITECT, ALL GLASS BUTT JOINT LOCATIONS IN THE B.R. WINDOW

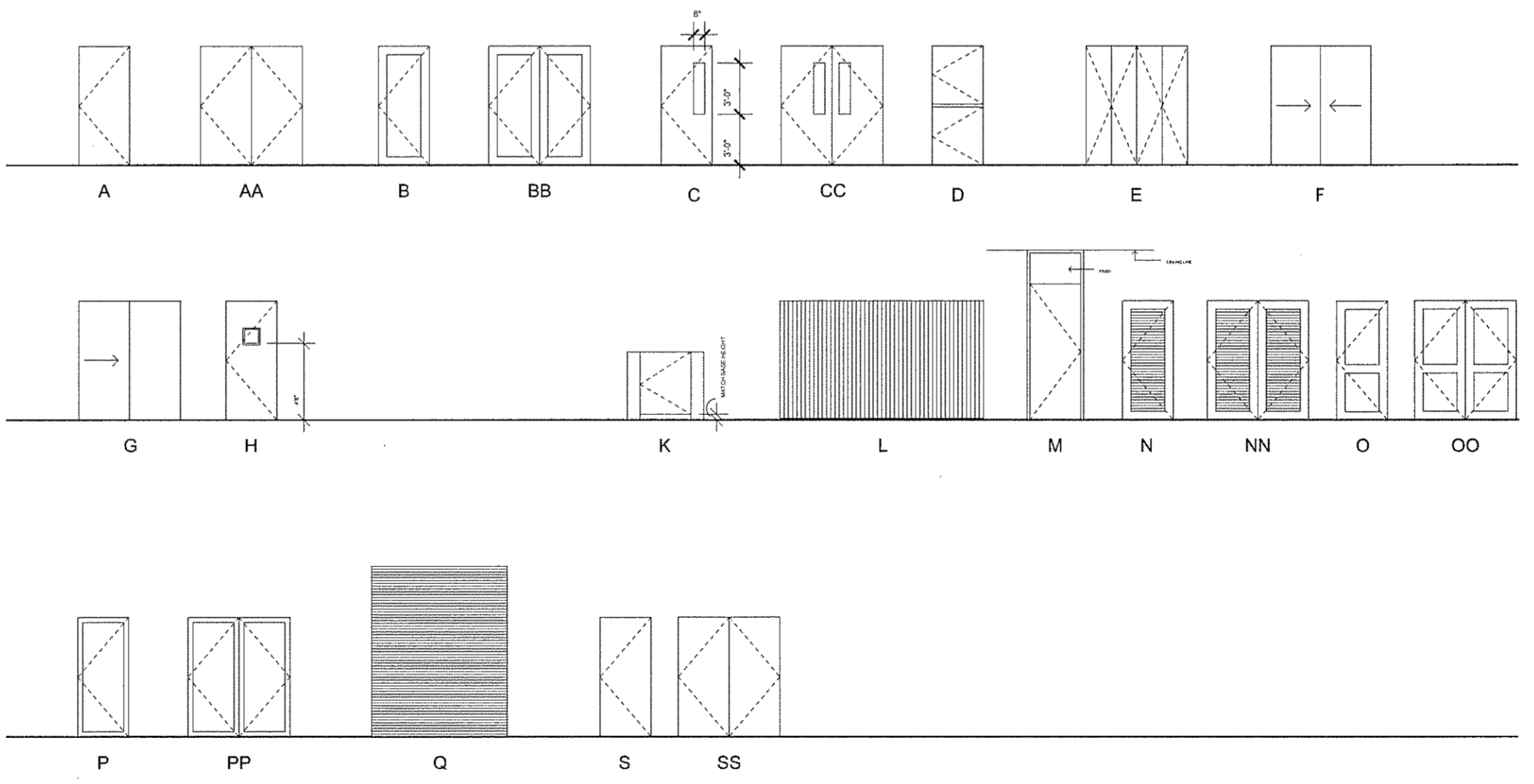


TYPICAL LEVER HANDLE **MOUNTING HEIGHT**

C1 Hardware Sets

C2 09-529.A Exterior Hardware Sets
SCALE: 1" = 1'-0"

C3 Door Schedules



- LEGEND**
- A & AA — FLUSH DOOR
 - B & BB — FULL GLASS WOOD DOOR
 - C & CC — VIEW WINDOW DOOR
 - D — DUTCH DOOR
 - E — BI-FOLD WOOD DOOR
 - F — SLIDING DOOR
 - G — POCKET DOOR
 - H — BULLET RESISTANT DOOR W/ B.R. VIEW WINDOW
 - K — GATE (COORDINATE WITH MILLWORK)
 - L — MOVEABLE WALL/DOOR
 - M — FLUSH DOOR WITH MATCHING FIXED TRANSOM
 - N & NN — FULLY LOUVERED DOOR
 - O & OO — STILE AND RAIL WITH/WITHOUT GLASS DOOR
 - P & PP — ALUMINUM/GLASS STOREFRONT DOOR
 - Q — UPWARD ACTING DOOR
 - S & SS — SPECIAL DESIGN - REFER TO DETAILS

- NOTES:**
- NOT ALL TYPES APPLICABLE TO THIS PROJECT. SCHEDULE OR NOTES FOR APPLICABLE DOOR TYPES.
 - SEE DOOR NOTES OR DOOR SCHEDULE FOR FINISHES, AND DIMENSIONS & HARDWARE.

A3 Door Types Schedule

A5 General Requirement Door Sch.



ARCHITECTURE
PLANNING
INTERIOR DESIGN

2425 WEST LOOP SOUTH
SUITE 665
HOUSTON TEXAS 77027
FAX 713-552-9810
713-552-0707
WWW.MGARCHITECTS.COM

CONSULTANTS

STRUCTURAL ENGINEER:
SCA Consulting Engineers

M/E/P ENGINEER:
Henderson Engineers

David A. Davis 12-02-09



Aloma Walk Branch
Aloma Ave.
Oviedo, FL 32765

ISSUE:

MARK	DATE	DESCRIPTION
	08-19-09	D.D. REVIEW
	09-15-09	DEVELOPER REVIEW
	10-12-09	PRICING
	12-02-09	BUILDING PERMIT

PROJECT NO:
09-529.a

DOOR/WINDOW SCHEDULES

A-603