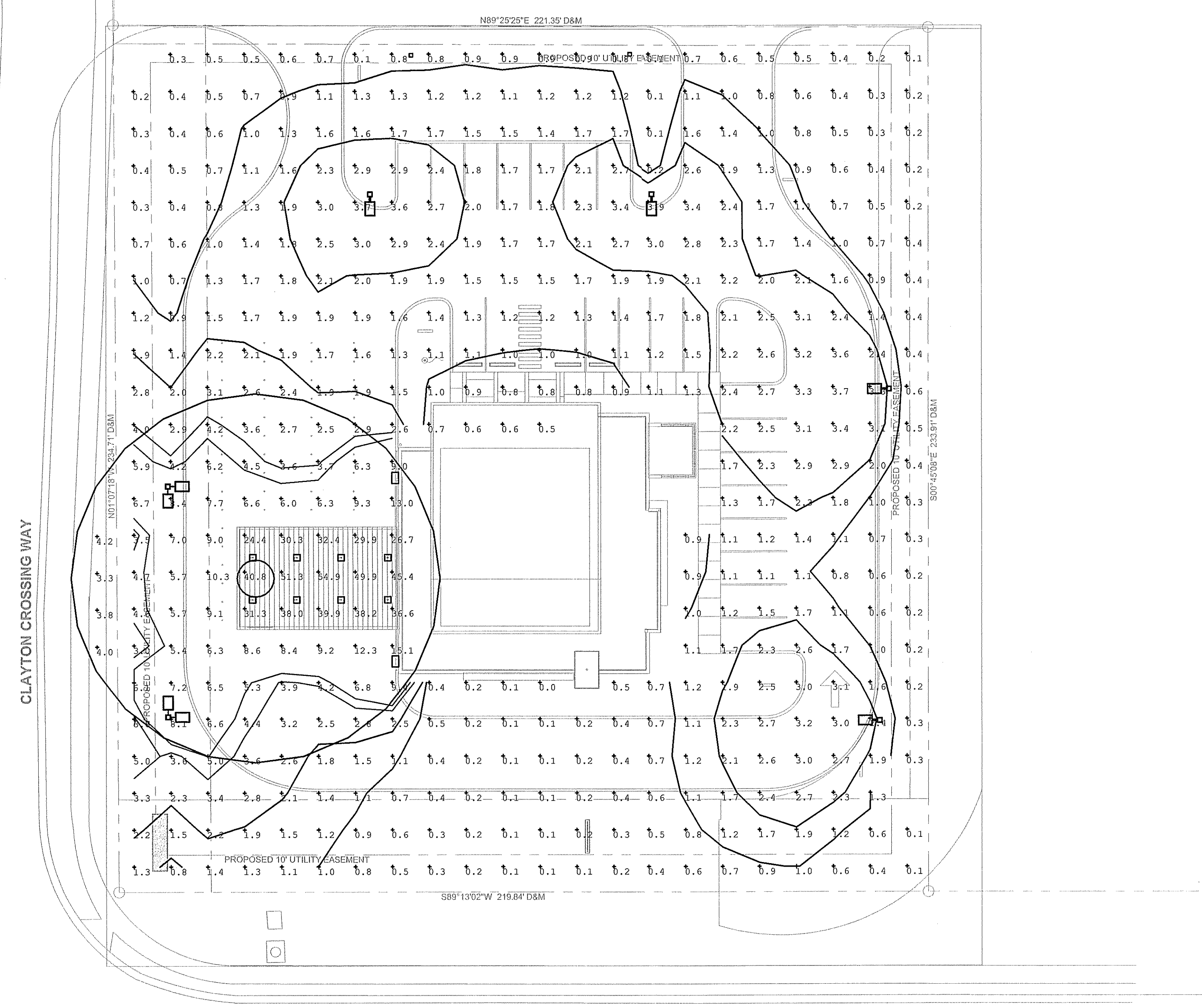




ARCHITECTURE
PLANNING
INTERIOR DESIGN

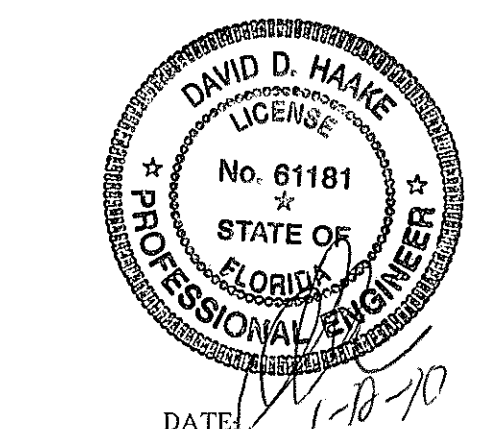
2425 WEST LOOP SOUTH
SUITE 665
HOUSTON TEXAS 77027
FAX 713-552-9810
713-552-0707
WWW.MGARCHITECTS.COM

- ELECTRICAL GENERAL NOTES:**
- HEIGHT OF SS AND SL FIXTURES TAKEN AT 25'-0" (25'-0" POLES, NO BASE), HEIGHT OF THE Q1 FIXTURES TAKEN AT 12'-0" FOR CALCULATIONS OF SITE PHOTOMETRICS.
 - CALCULATED LIGHT LOSS FACTOR - 0.8.
 - PHOTOMETRIC VALUES CALCULATED AT FINISHED GRADE.
- CALCULATED VALUES FOR SITE LIGHTING:**
- AVERAGE - 3.17 FC
 MAXIMUM - 54.9 FC
 MINIMUM - 0.0 FC
 AVG./MIN. - N/A
 MAX./MIN. - N/A



1 PHOTOMETRIC SITE PLAN
SCALE: 1"=20'-0"

PROFESSIONAL ENGINEER
David D. Haake
FL PE# -
61181



HENDERSON ENGINEERS
10370 RICHMOND AVENUE, SUITE 370
HOUSTON, TX 77042
TEL 713 783 7707 FAX 713 783 7797
www.hel-eng.com
©2008/04/14
FL CORPORATE NUMBER: EB 7406
EXPIRES 02/28/11

CONSULTANTS

STRUCTURAL ENGINEER:
SCA Consulting Engineers

M/E/P/ ENGINEER:
Henderson Engineers



Aloma Walk Branch
Aloma Ave.
Oviedo, FL 32765

ISSUE:

MARK	DATE	DESCRIPTION
	09-15-09	DEVELOPER REVIEW
	11-18-09	ISSUE FOR PERMIT
	12-02-09	ISSUE FOR PERMIT
	01-15-10	RESPONSE TO BUILDING PERMIT COMMENTS

PROJECT NO:
09-529.a

**PHOTOMETRIC
SITE PLAN**

E-101