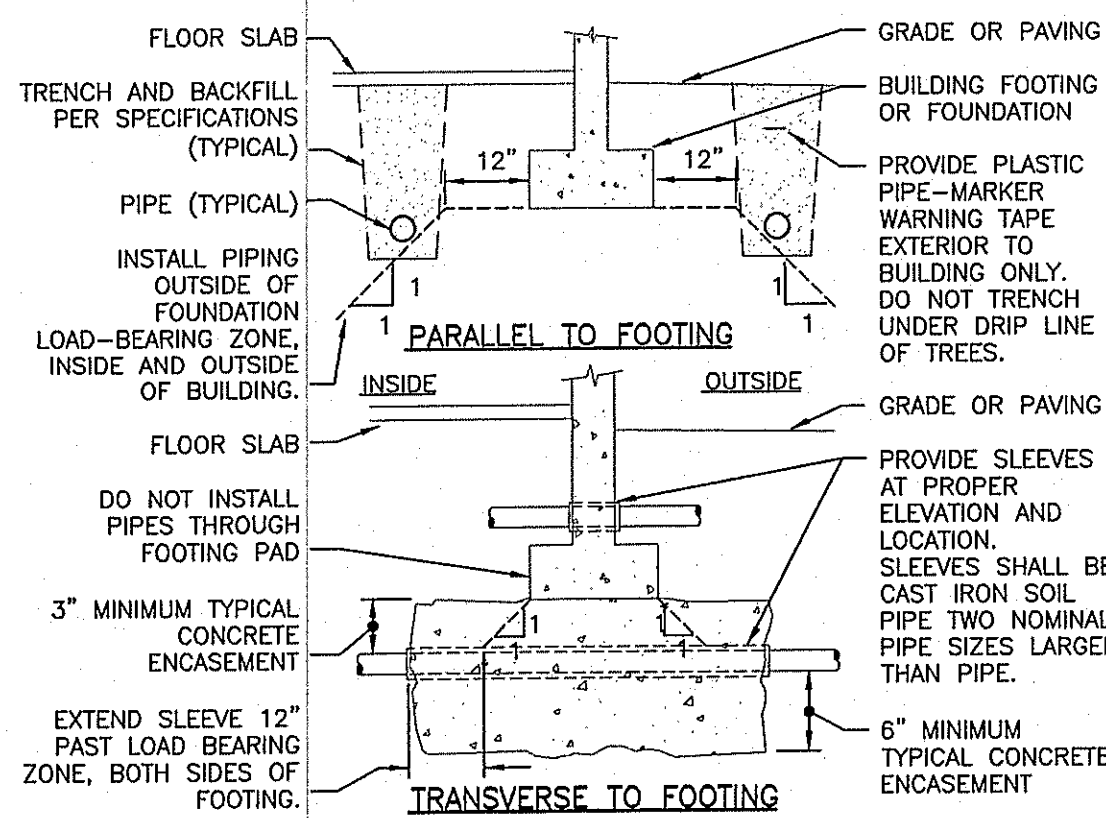
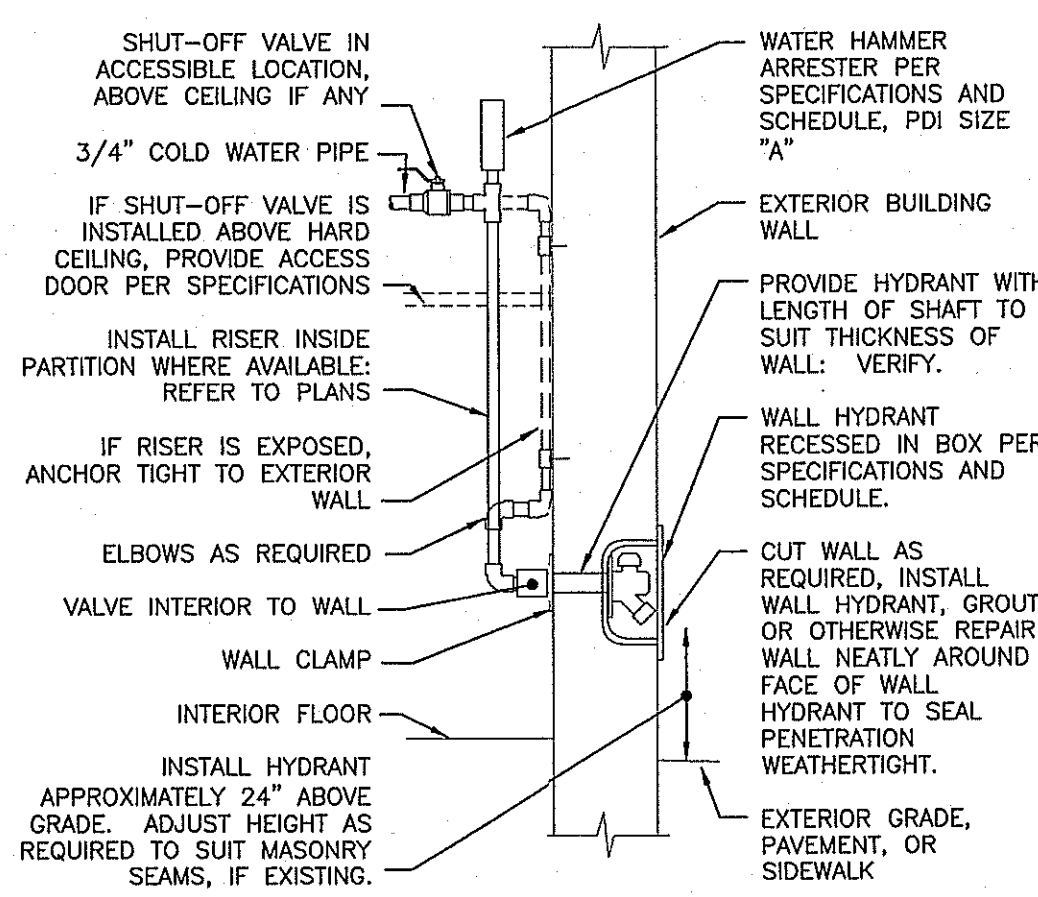


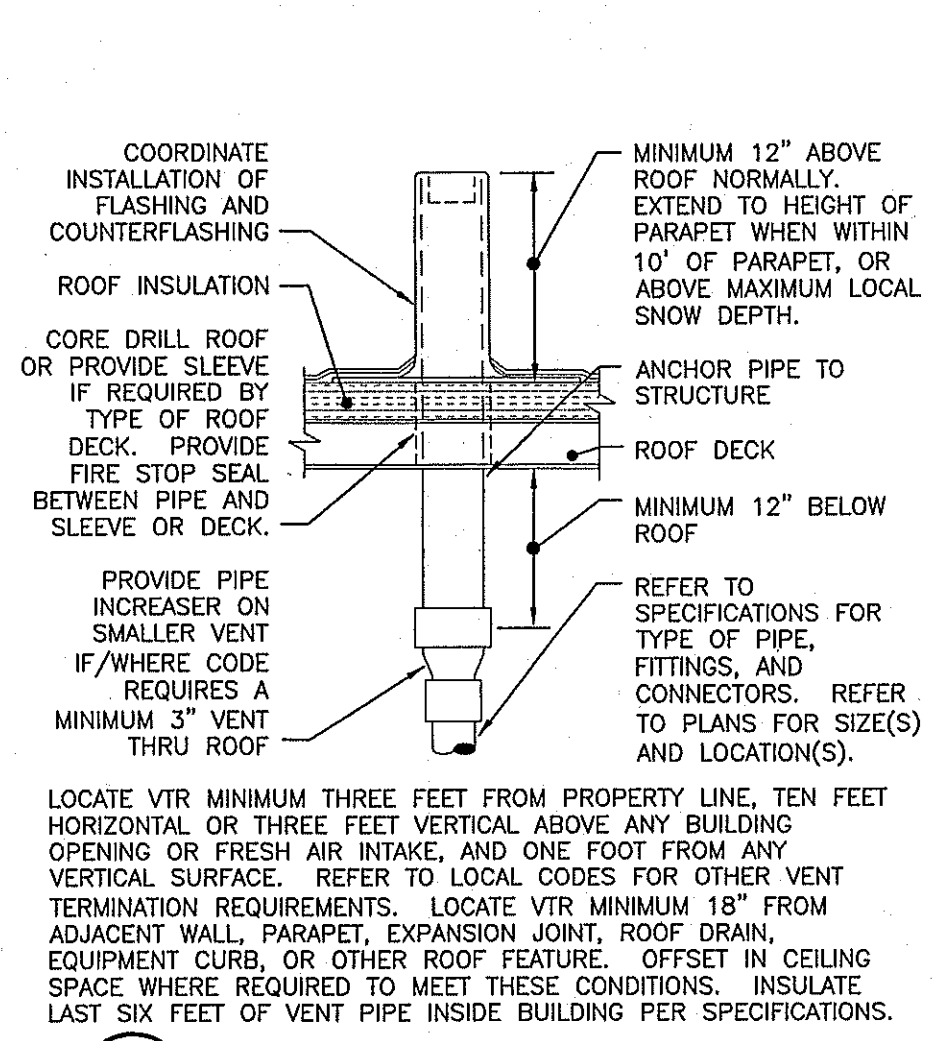
**1 CONDENSATE DRAIN INSTALLATION**  
NOT TO SCALE



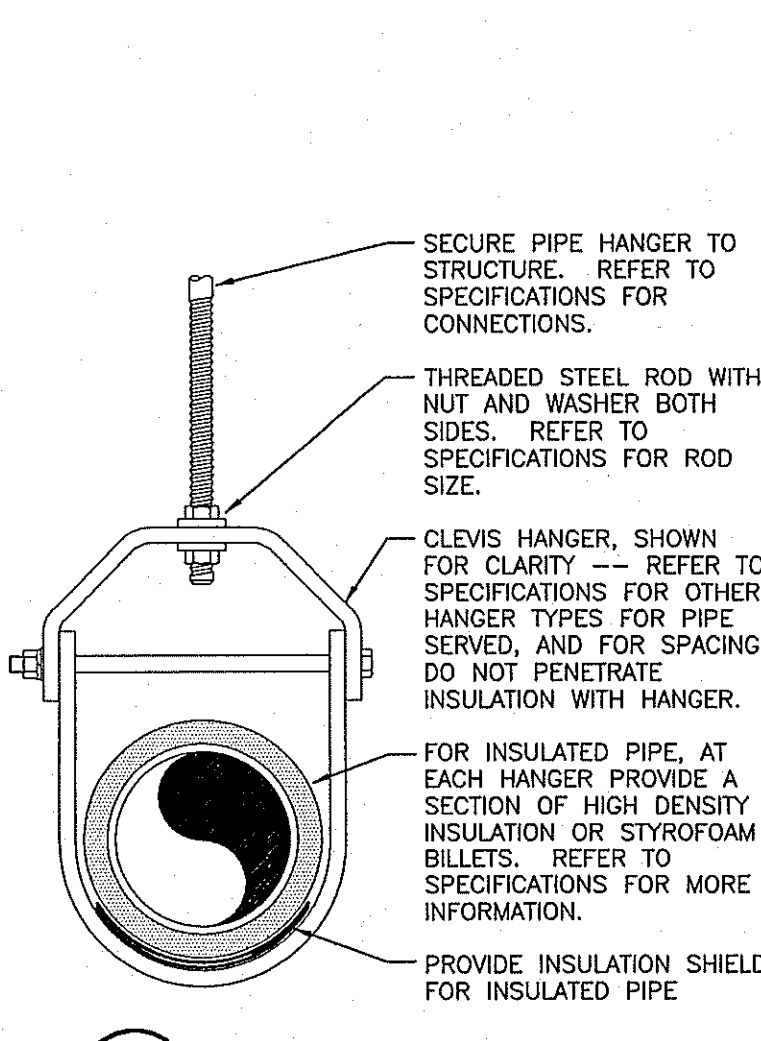
**2 TRAP PRIMER OVERHEAD**  
NOT TO SCALE



**3 WALL HYDRANT INSTALLATION**  
NOT TO SCALE



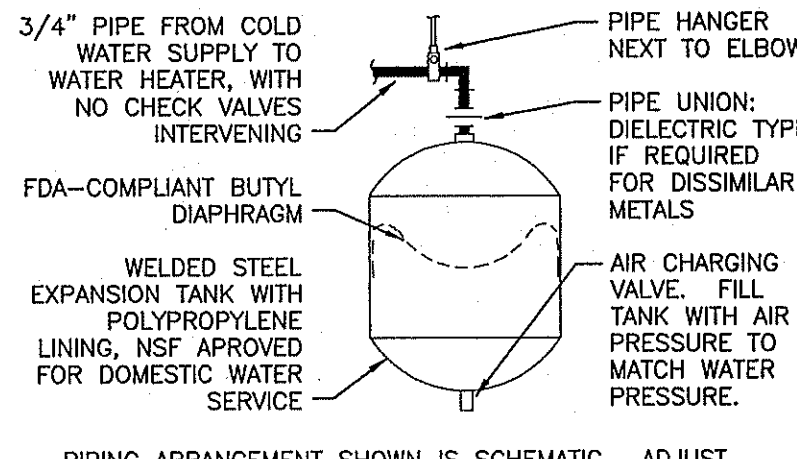
**4 VENT THRU ROOF (\"/>**



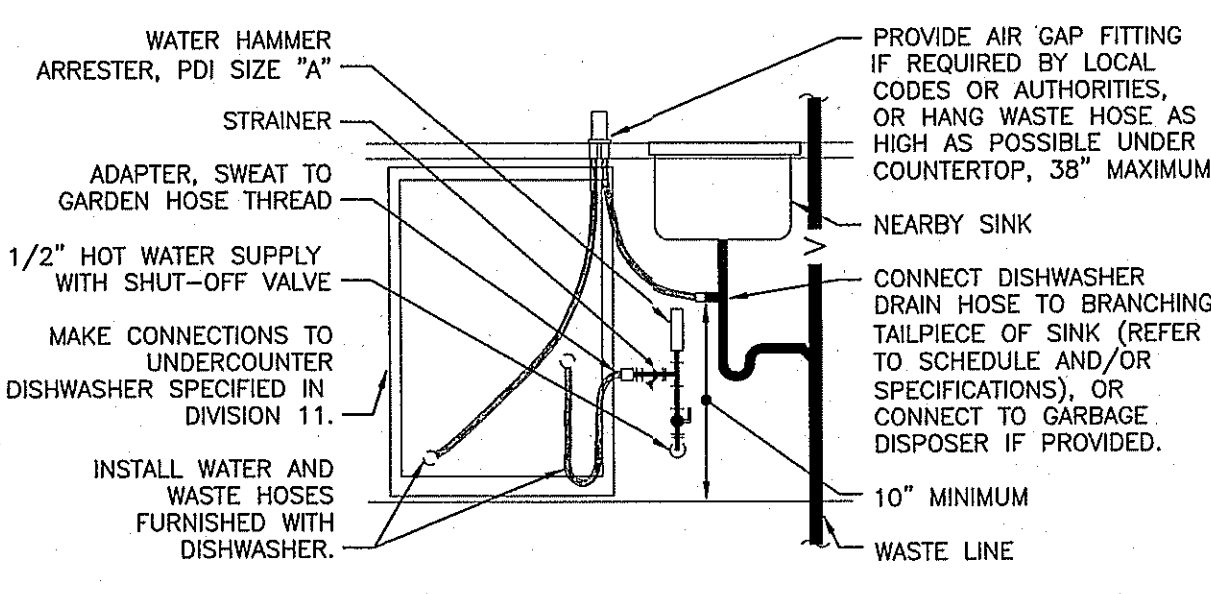
**5 PIPE HANGER DETAIL**  
NOT TO SCALE

ARRANGEMENT SHOWN IS SCHEMATIC. ADJUST TO SUIT FIELD CONDITIONS. PROVIDE CONNECTIONS SHOWN IN EQUIPMENT MANUFACTURER'S INSTALLATION INSTRUCTIONS. REFER TO SPECIFICATIONS FOR PIPE AND FITTING MATERIALS AND INSTALLATION. PROVIDE DIELECTRIC UNION IF CONNECTING DISSIMILAR METALS. AT MOTORIZED EQUIPMENT ABOVE CEILING, PROVIDE NEOPRENE TUBE AND STAINLESS STEEL SCREW CLAMPS FOR FLEXIBLE CONNECTION. FOR PIPE SIZE(S) REFER TO FLOOR PLANS, OR CODE REQUIREMENTS FOR HVAC UNIT TONNAGE. PROVIDE HANGERS OR SUPPORTS PER SPECIFICATIONS. DO NOT COMBINE CONDENSATE DRAIN PIPES WITH NON-CONDENSATE INDIRECT DRAINS.

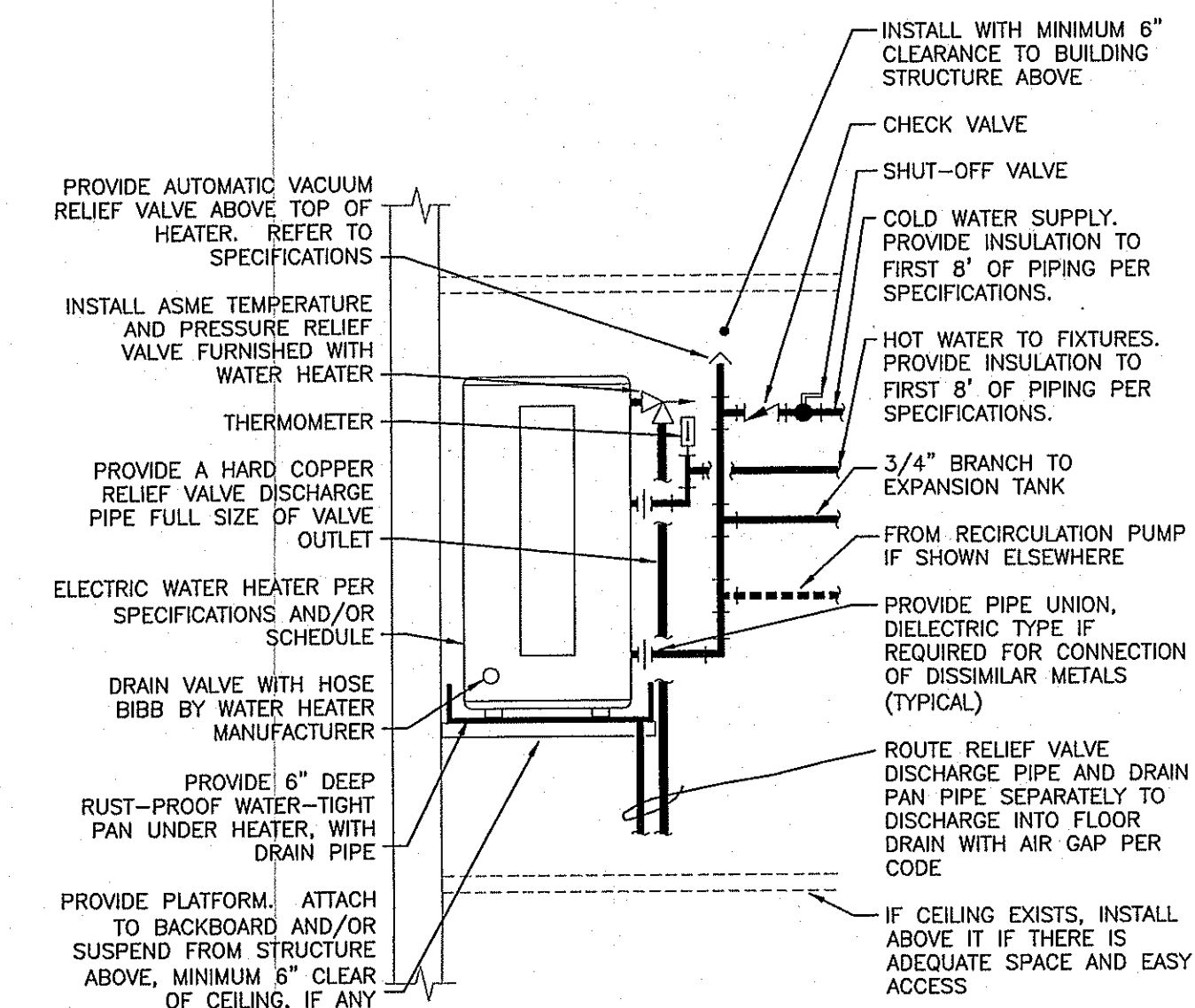
**6 PIPE AND TRENCH LOCATION**  
NOT TO SCALE



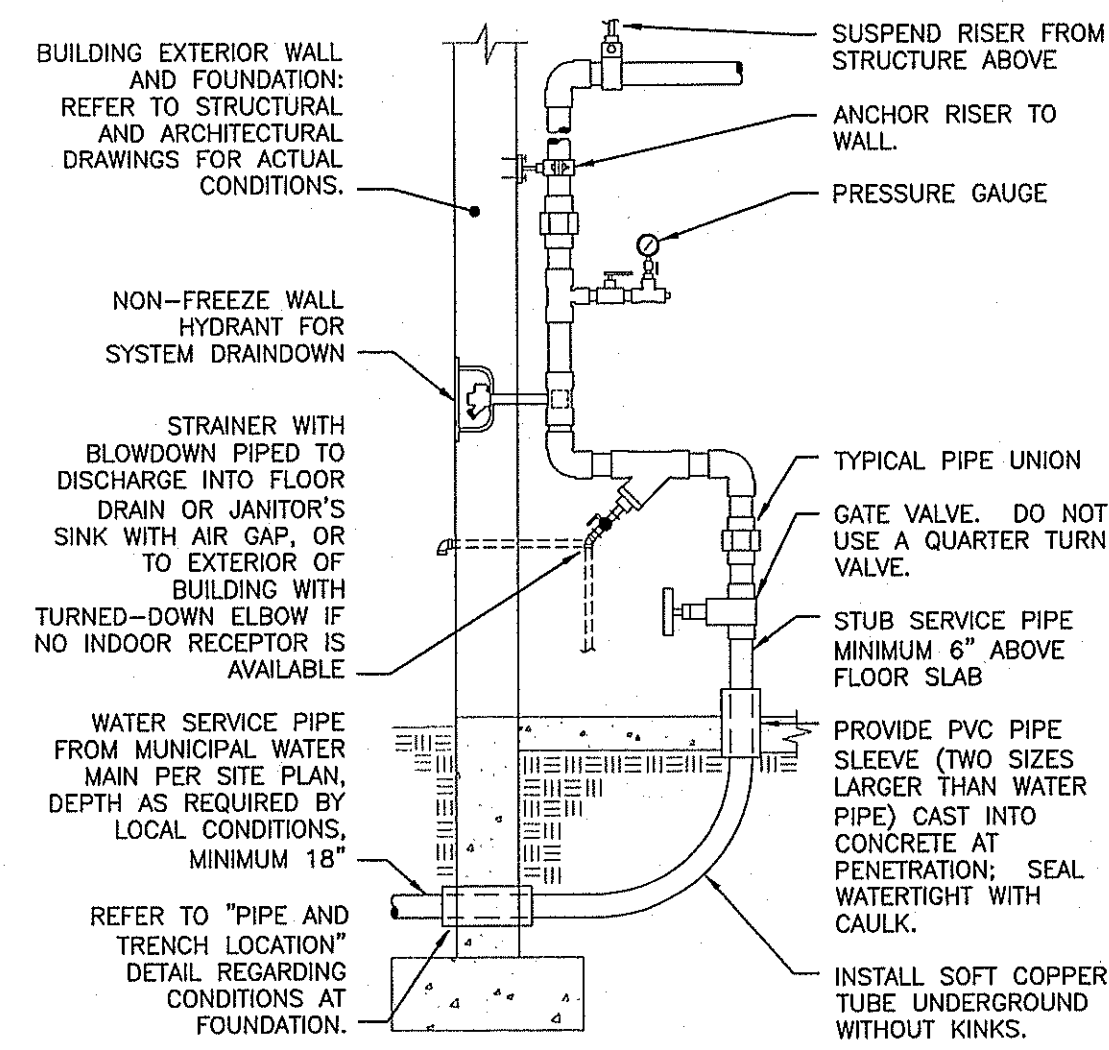
**7 SMALL EXPANSION TANK**  
NOT TO SCALE



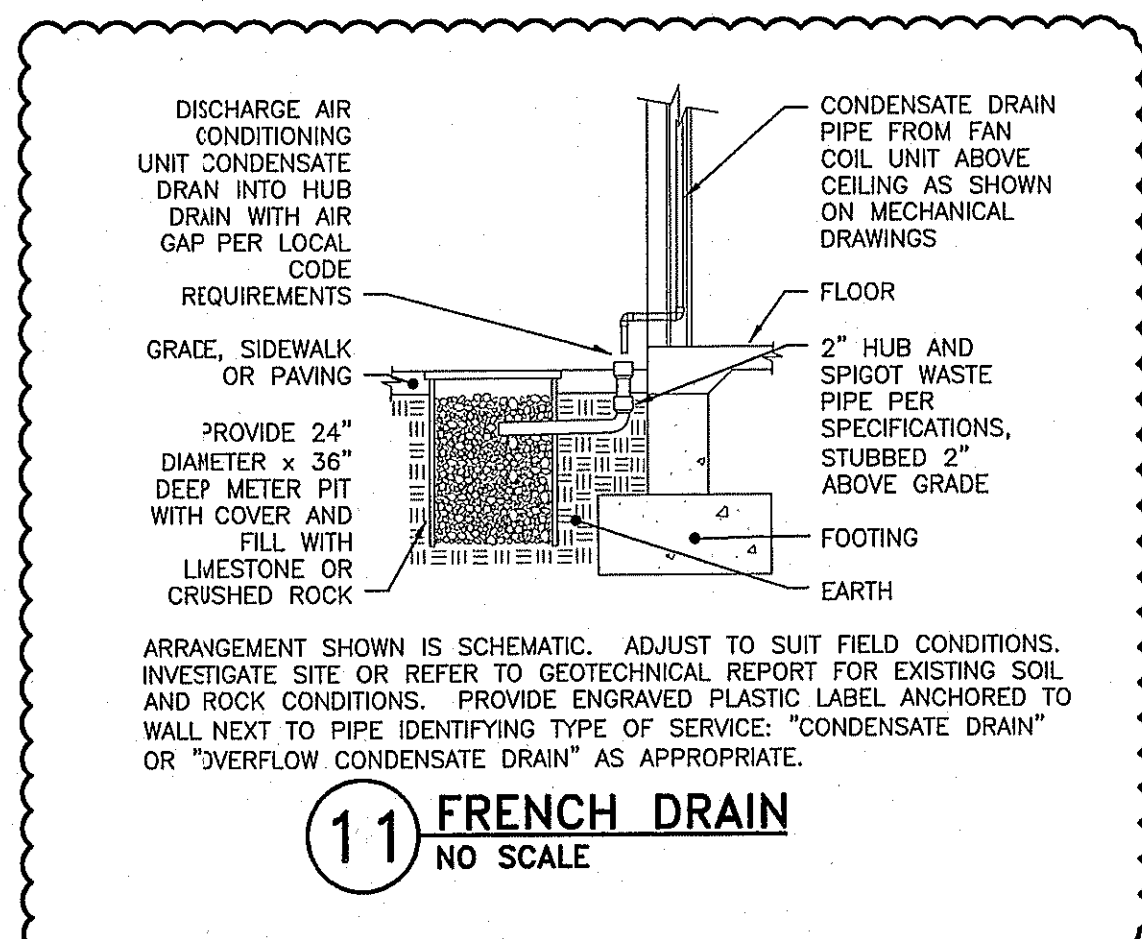
**8 RESIDENTIAL DISHWASHER CONNECTION**  
NOT TO SCALE



**9 ELECTRIC WATER HEATER OVERHEAD**  
NOT TO SCALE



**10 DOMESTIC WATER SERVICE ENTRY**  
NOT TO SCALE



**11 FRENCH DRAIN**  
NO SCALE

REFER TO SPECIFICATIONS, SCHEDULES AND NOTES FOR MORE INFORMATION. PIPING ARRANGEMENT SHOWN IS SCHEMATIC. ADJUST TO SUIT FIELD CONDITIONS. VERIFY CONNECTION SIZES AND LOCATIONS PER MANUFACTURER'S REQUIREMENTS. REFER TO FLOOR PLANS FOR PIPE SIZES. PROVIDE SEISMIC STRAP OR BRACING IF/AS REQUIRED BY LOCAL AUTHORITIES AND/OR SEPARATE DETAIL. PROVIDE HEAT TRAP WHEN REQUIRED BY LOCAL CODES/AUTHORITIES. INSTALL WITH BOTTOM MINIMUM 6\"/>

PIPING ARRANGEMENT SHOWN IS SCHEMATIC. ADJUST TO SUIT FIELD CONDITIONS. ALL ITEMS SHALL BE APPROVED FOR DOMESTIC WATER SERVICE. VERIFY ALL ITEMS SO THAT THEY CAN BE EASILY SERVICED. REFER TO SPECIFICATIONS AND SCHEDULES FOR FURTHER INFORMATION.

ARRANGEMENT SHOWN IS SCHEMATIC. ADJUST TO SUIT FIELD CONDITIONS. INVESTIGATE SITE OR REFER TO GEOTECHNICAL REPORT FOR EXISTING SOIL AND ROCK CONDITIONS. PROVIDE ENGRAVED PLASTIC LABEL ANCHORED TO WALL NEXT TO PIPE IDENTIFYING TYPE OF SERVICE: \"CONDENSATE DRAIN\" OR \"OVERFLOW CONDENSATE DRAIN\" AS APPROPRIATE.



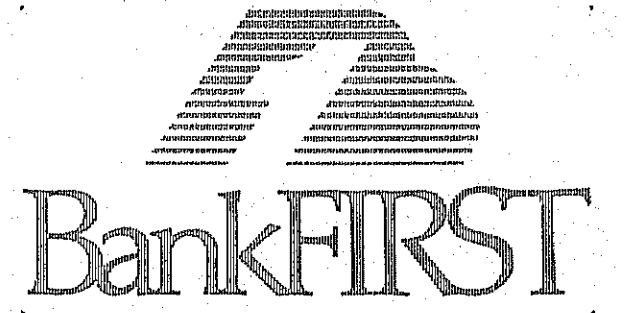
ARCHITECTURE  
PLANNING  
INTERIOR DESIGN

2425 WEST LOOP SOUTH  
SUITE 665  
HOUSTON TEXAS 77027  
FAX 713-552-9810  
713-552-0707

WWW.MGARCHITECTS.COM

**CONSULTANTS**

STRUCTURAL ENGINEER:  
SCA Consulting Engineers  
  
M/E/P ENGINEER:  
Henderson Engineers



Aloma Walk Branch  
Aloma Ave.  
Oviedo, FL 32765

**ISSUE:**

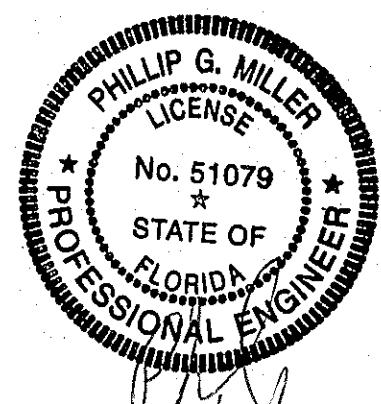
MARK	DATE	DESCRIPTION
	09-15-09	DEVELOPER REVIEW
	11-16-09	ISSUE FOR PERMIT
	12-02-09	ISSUE FOR PERMIT
	01-13-10	RESPONSE TO BUILDING PERMIT COMMENTS

PROJECT NO:  
**09-529.a**

**PLUMBING DETAILS**

**P-501**

PROFESSIONAL ENGINEER  
Phillip G. Miller  
FL PE# -  
51079



DATE: 1/28/10



10370 RICHMOND AVENUE, SUITE 370  
HOUSTON, TX 77042  
TEL 713 783 7707 FAX 713 783 7797  
www.hel-eng.com  
095000466  
FL CORPORATE NUMBER: EB 7406  
EXPIRES 02/28/11