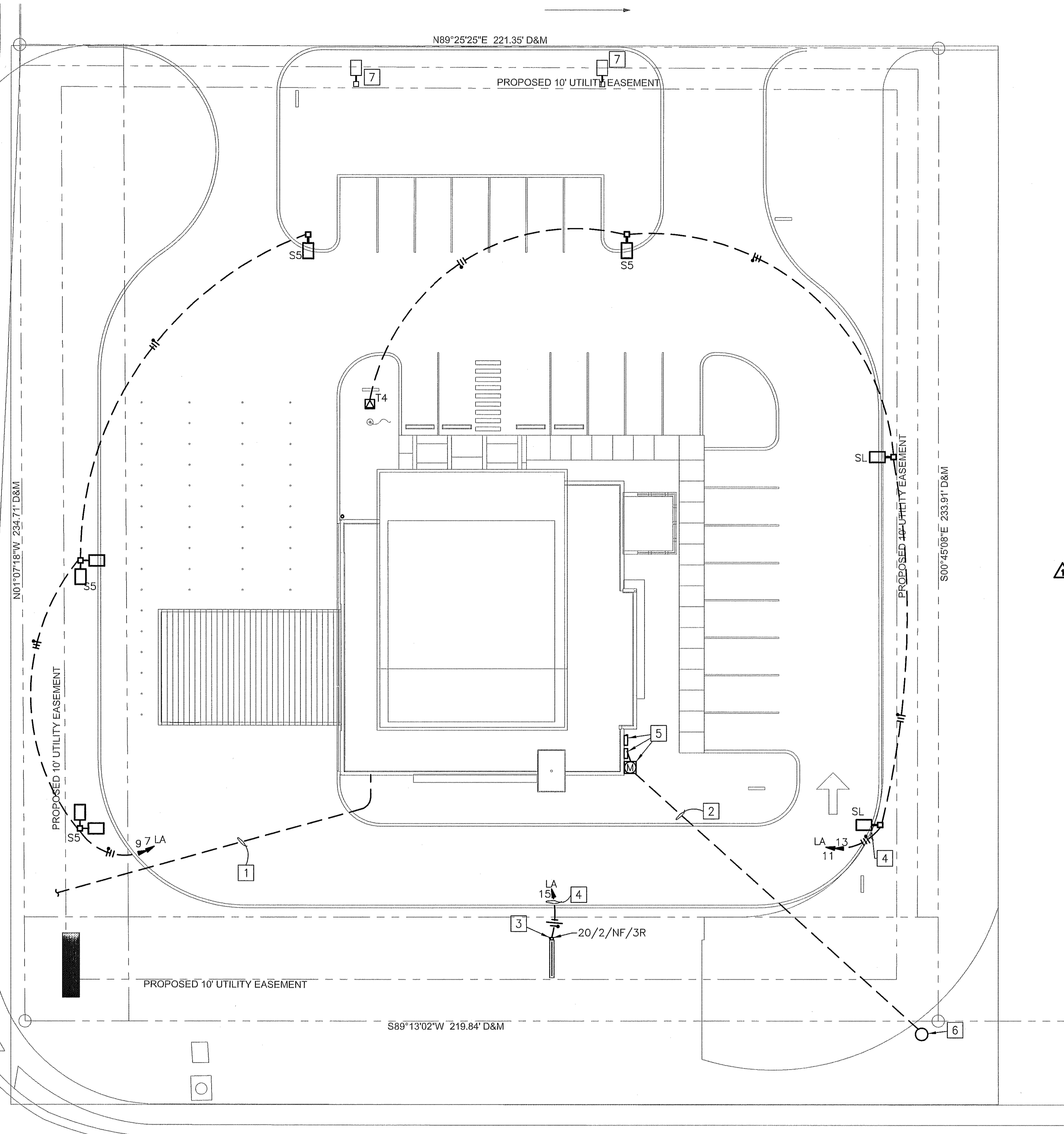


CLAYTON CROSSING WAY



ALOMA AVE

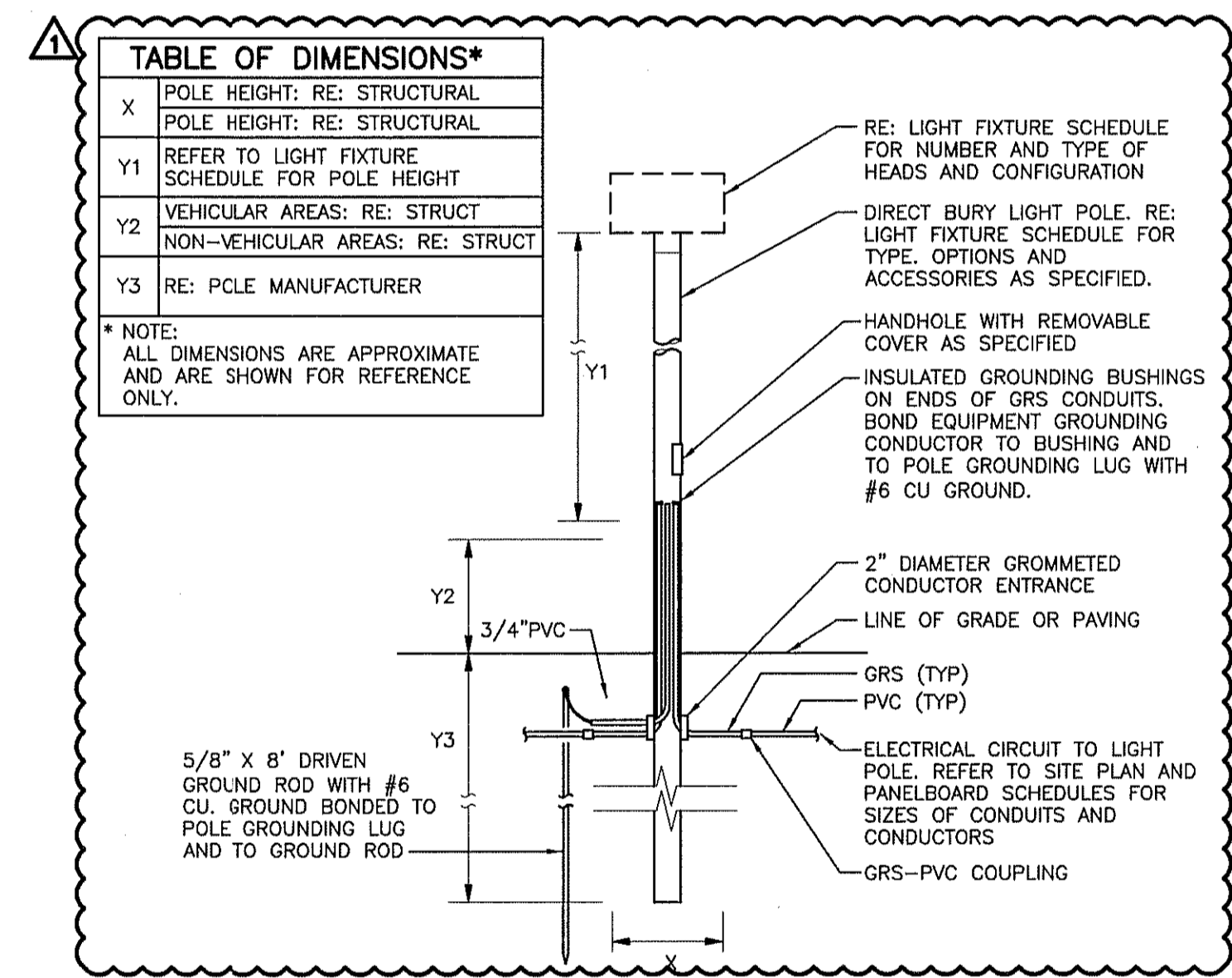
1 ELECTRICAL SITE PLAN
SCALE: 1"=20'-0"

GENERAL NOTES:

1. PROVIDE ALL TRENCHING, BACKFILLING, AND CONDUIT FROM THE UTILITY COMPANY POWER SOURCE TO THE SERVICE ENTRANCE.
2. ALL UNDERGROUND CONDUIT SHALL HAVE LONG RADIUS ELBOWS.
3. REFER TO ARCHITECTURAL PLANS FOR EXACT LIGHT FIXTURE LOCATIONS.
4. CONTACT THE LOCAL UTILITY COMPANY AND ARRANGE FOR SERVICE AS INDICATED ON DRAWINGS. INCLUDE ALL COSTS, CHARGES, FEES, ETC. INCURRED BY LOCAL UTILITY IN BID. PROVIDE ALL MATERIALS AS REQUIRED BY LOCAL UTILITY FOR ELECTRICAL SERVICE INSTALLATION. ALL WORK SHALL BE IN ACCORDANCE WITH REQUIREMENTS OF LOCAL AUTHORITIES. REFER TO RISER DIAGRAM ON SHEET E-503 FOR ADDITIONAL INFORMATION.
5. PRIOR TO SUBMITTING A BID, AND TO OBTAIN THE COST OF SUCH WORK, CONTACT THE TELEPHONE AND CABLE TELEVISION COMPANIES AND COORDINATE THE EXACT LOCATION ON THE SITE FOR TERMINATION OF UNDERGROUND PROVISIONAL CONDUITS FOR COMMUNICATIONS (TELEPHONE) AND TELEVISION CABLEING. COORDINATE EXACT ROUTING OF THE PROVISIONAL CONDUITS WITH OTHER UTILITIES AND WORK ASSOCIATED WITH THE SITE. OBTAIN FROM THE UTILITY COMPANY, IN WRITING, SPECIFICATIONS AND DETAILED REQUIREMENTS OF THE PROVISIONS, INCLUDING BUT NOT LIMITED TO, ADDITIONAL PULL BOX SPECIFICATIONS, ROUTING LIMITATIONS, ETC. SO THAT ALL REQUIRED PROVISIONS OF THE UTILITY COMPANY ARE PROVIDED UNDER THIS CONTRACT.
6. REFER TO SHEET E-501 FOR LEGEND AND ABBREVIATIONS.
7. REFER TO SHEET E-502 FOR LIGHT FIXTURE SCHEDULE.
8. PROVIDE OPERATING MANUAL AND MAINTENANCE MANUAL TO THE BUILDING OWNER AT THE COMPLETION OF CONSTRUCTION. THE MANUALS SHALL INCLUDE, AT A MINIMUM, THE FOLLOWING:
 1. SUBMITTAL DATA STATING EQUIPMENT RATING AND SELECTED OPTIONS FOR EACH PIECE OF EQUIPMENT REQUIRING MAINTENANCE.
 2. OPERATION MANUALS AND MAINTENANCE MANUALS FOR EACH PIECE OF EQUIPMENT REQUIRING MAINTENANCE. REQUIRED ROUTINE MAINTENANCE ACTIONS SHALL BE CLEARLY IDENTIFIED.
 3. NAMES AND ADDRESSES OF AT LEAST ONE QUALIFIED SERVICE AGENCY.

ELECTRICAL PLAN NOTES:

- 1 PROVIDE (4) 4" CONDUITS BURIED AT 42" FOR TELEPHONE/DATA, CATV SERVICE, AND A SPARE, WITH PULLSTRINGS, TO DATA ROOM 113. PROVIDE METALLIZED WARNING TAPE 1'-0" ABOVE BURIED CONDUITS.
- 2 PROVIDE SERVICE LATERAL FROM UTILITY PEDESTAL AT BASE OF POLE TO CT ENCLOSURE ON BUILDING.
- 3 PROVIDE DISCONNECT SWITCH AND POWER FOR MONUMENT SIGN.
- 4 ROUTE CIRCUIT THROUGH LIGHTING CONTROL PANEL 'LCP'. REFER TO SCHEDULE AND DETAILS ON SHEET E-502 FOR FURTHER INFORMATION.
- 5 LOCATION OF EXTERIOR MAIN DISCONNECT SWITCH.
- 6 PROPOSED LOCATION OF UTILITY COMPANY POWER POLE AND POLE MOUNTED TRANSFORMERS. UTILITY COMPANY SHALL PROVIDE POLE AND PEDESTAL AT BASE OF POLE FOR CONNECTION TO SERVICE LATERAL.
- 7 LIGHT POLE IS NOT IN CONTRACT.



2 POLE BASE DETAIL
NOT TO SCALE

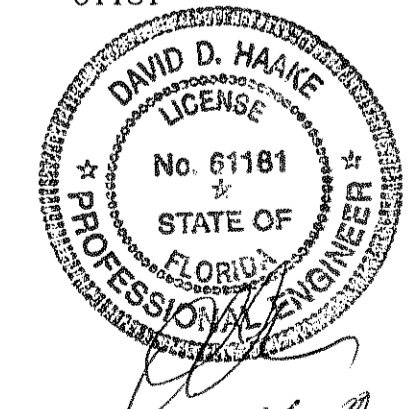
TABLE OF DIMENSIONS*

X	POLE HEIGHT: RE: STRUCTURAL
Y1	REFER TO LIGHT FIXTURE SCHEDULE FOR POLE HEIGHT
Y2	VEHICULAR AREAS: RE: STRUCT
Y3	RE: POLE MANUFACTURER

* NOTE: ALL DIMENSIONS ARE APPROXIMATE AND ARE SHOWN FOR REFERENCE ONLY.

- RE: LIGHT FIXTURE SCHEDULE FOR NUMBER AND TYPE OF HEADS AND CONFIGURATION
- DIRECT BURY LIGHT POLE. RE: LIGHT FIXTURE SCHEDULE FOR TYPE, OPTIONS AND ACCESSORIES AS SPECIFIED.
- HANDHOLE WITH REMOVABLE COVER AS SPECIFIED
- INSULATED GROUNDING BUSHINGS ON ENDS OF GRS CONDUITS. BOND EQUIPMENT GROUNDING CONDUCTOR TO BUSHING AND TO POLE GROUNDING LUG WITH #6 CU GROUND.
- 2" DIAMETER GROMMETED CONDUCTOR ENTRANCE
- LINE OF GRADE OR PAVING
- GRS (TYP)
- PVC (TYP)
- ELECTRICAL CIRCUIT TO LIGHT POLE. REFER TO SITE PLAN AND PANELBOARD SCHEDULES FOR SIZES OF CONDUITS AND CONDUCTORS
- GRS-PVC COUPLING

PROFESSIONAL ENGINEER
David D. Haake
FL PE# -
61181



DATE: 3-16-10

HENDERSON ENGINEERS
10370 RICHMOND AVENUE, SUITE 370
HOUSTON, TX 77042
TEL 713 783 7700 FAX 713 783 7797
www.hel-eng.com
095000484
FL CORPORATE NUMBER: EB 7606
EXPIRES 02/28/11

McCLEARY GERMAN ARCHITECTS
ARCHITECTURE
PLANNING
INTERIOR DESIGN
2425 WEST LOOP SOUTH
SUITE 665
HOUSTON TEXAS 77027
FAX 713-552-9810
713-552-0707
WWW.MGARCHITECTS.COM

CONSULTANTS

STRUCTURAL ENGINEER:
SCA Consulting Engineers
M/E/P/ ENGINEER:
Henderson Engineers

BankFIRST
Aloma Walk Branch
Aloma Ave.
Oviedo, FL 32765

ISSUE:

MARK	DATE	DESCRIPTION
	09-15-09	DEVELOPER REVIEW
	11-16-09	ISSUE FOR PERMIT
	12-02-09	ISSUE FOR PERMIT
	01-13-10	RESPONSE TO BUILDING PERMIT COMMENTS
	01-29-10	RESPONSE TO BUILDING PERMIT COMMENTS
⚠	03-17-10	BUILDING REVISIONS

PROJECT NO:
09-529.a

ELECTRICAL SITE PLAN

E-100