



ARCHITECTURE  
PLANNING  
INTERIOR DESIGN

2425 WEST LOOP SOUTH  
SUITE 665  
HOUSTON TEXAS 77027  
FAX 713-552-9810  
713-552-0707  
WWW.MGARCHITECTS.COM

**CONSULTANTS**

STRUCTURAL ENGINEER:  
SCA Consulting Engineers  
  
M/E/P/ ENGINEER:  
Henderson Engineers



**BankFIRST**

Aloma Walk Branch  
Aloma Ave.  
Oviedo, FL 32765

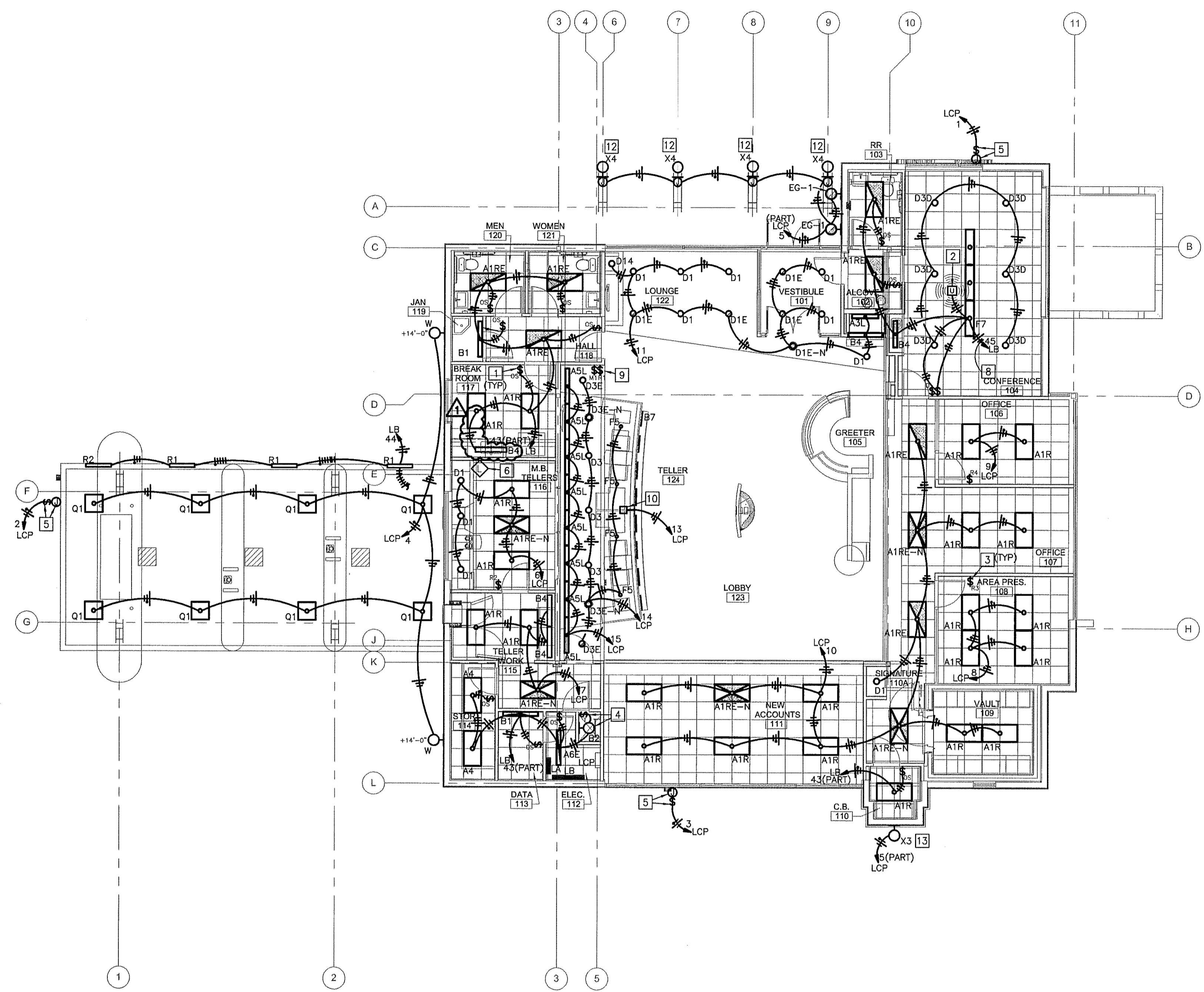
**ISSUE:**

MARK	DATE	DESCRIPTION
	09-15-09	DEVELOPER REVIEW
	11-16-09	ISSUE FOR PERMIT
	12-02-09	ISSUE FOR PERMIT
	01-13-10	RESPONSE TO BUILDING PERMIT COMMENTS
	01-29-10	RESPONSE TO BUILDING PERMIT COMMENTS
	03-17-10	BUILDING REVISIONS

PROJECT NO:  
**09-529.a**

**ELECTRICAL  
LIGHTING PLAN**

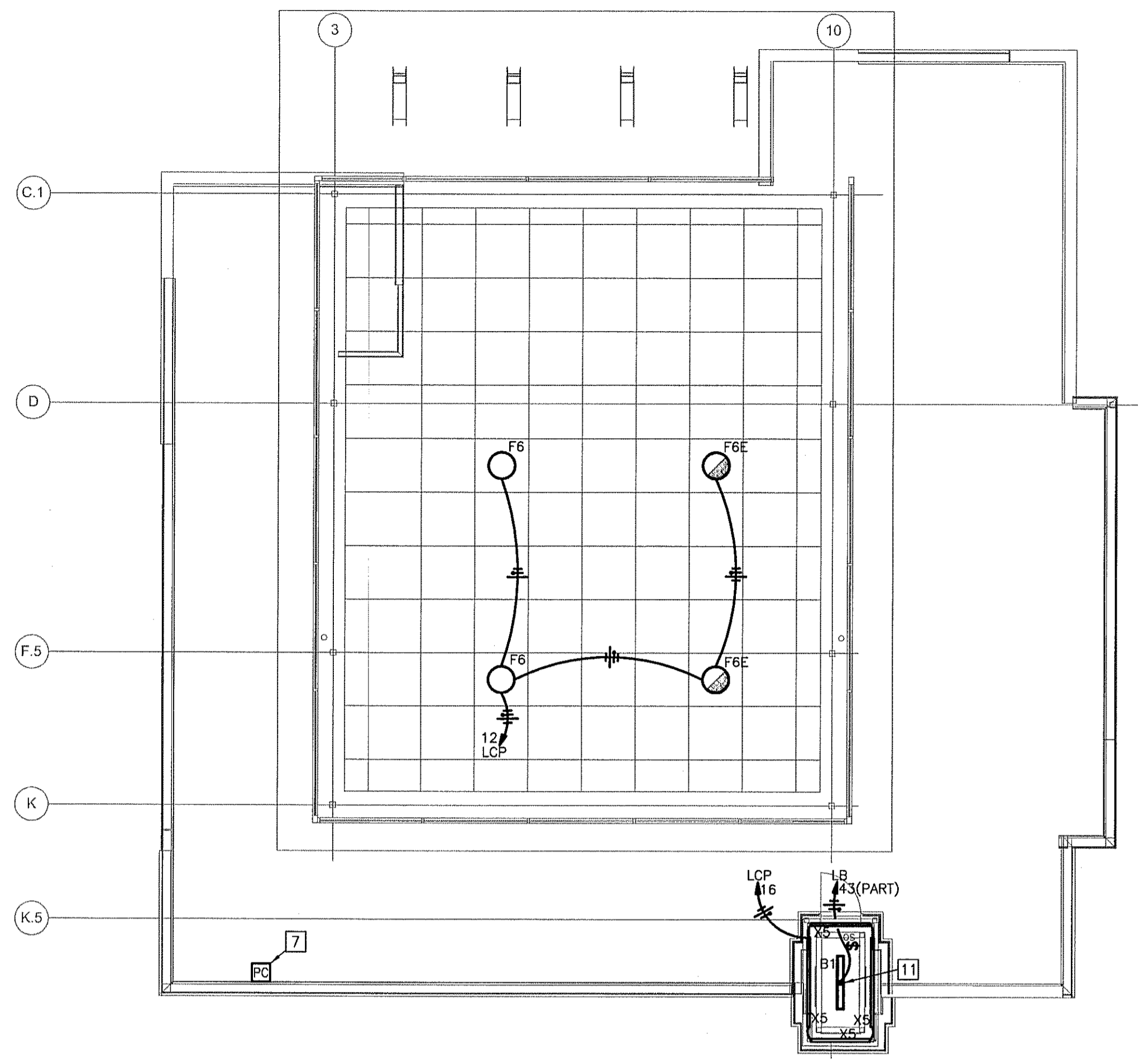
**EL-111**



**1 ELECTRICAL LIGHTING PLAN**  
SCALE: 1/8"=1'-0"

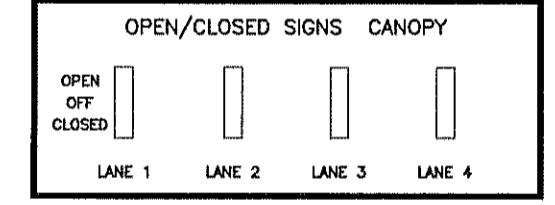
**ELECTRICAL PLAN NOTES:**

- 1 PROVIDE COOPER 'OSW-P-0451-W' WALL-MOUNTED OCCUPANCY SENSOR.
- 2 PROVIDE COOPER 'OMC-0T-0701-R' CEILING-MOUNTED OCCUPANCY SENSOR.
- 3 PROVIDE DIGITA 1 SWITCH AT THIS LOCATION.
- 4 PROVIDE LIGHT FIXTURE IN ROOF HATCH CHASE INSTALLED AT A MINIMUM OF 12-INCHES BELOW HATCH. PROVIDE 2-HOUR TIMER SWITCH 12-INCHES ABOVE CHASE OPENING AT CEILING LEVEL. TIMER SWITCH SHALL BE TORK A502HH OR APPROVED EQUAL.
- 5 PROVIDE JUNCTION BOX AND TOGGLE DISCONNECT SWITCH FOR BUILDING SIGNAGE AND REMOTE TRANSFORMER. COORDINATE EXACT REQUIREMENTS WITH SIGN MANUFACTURER PRIOR TO INSTALLATION.
- 6 VERIFY LOCATIONS OF LANE SIGNS AND SWITCHES WITH ARCHITECT. CONTROL VIA SWITCHING STATION IN M.B. TELLERS 116. INSTALL SWITCHING STATION AT +48" AFF. REFER TO DETAIL 3, THIS SHEET.
- 7 PROVIDE PHOTOCELL FOR CONTROL OF LITEKEEPER LIGHTING RELAYS, MOUNTED ON THE ROOF, FACING NORTH WITH AN UNOBSTRUCTED VIEW. COORDINATE FINAL LOCATION WITH ARCHITECT PRIOR TO INSTALLATION.
- 8 PROVIDE UNSWITCHED HOT CONDUCTOR BYPASSING OCCUPANCY SENSOR RELAY IN CONFERENCE ROOM TO LIGHT FIXTURES IN RR 103 AND ALCOVE 102.
- 9 LOCATION OF DATALINE SWITCH STATION 'M1', FOR THE MAIN LOBBY LIGHTING. REFER TO SHEET E-502 FOR FURTHER INFORMATION.
- 10 INSTALL FIBER OPTIC METAL HALIDE ILLUMINATOR IN MILLWORK IN THIS AREA.
- 11 ELECTRICAL CONDUIT FOR LIGHT FIXTURE TO RUN EXPOSED UP BACK SIDE OF COLUMN. COORDINATE LOCATION OF FIXTURE WITH ROOF DRAIN.
- 12 RUN CONDUIT FOR THESE FIXTURES DOWN BACKSIDE OF COLUMN WEB IN CORNER (1 PER FIXTURE). PROVIDE JUNCTION BOX ON BACK SIDE OF COLUMN BEHIND EACH FIXTURE. FINAL MOUNTING HEIGHT OF FIXTURE TO BE 10'-7" A.F.F. REFER TO SECTION DIAGRAM IN DETAIL A1 ON SHEET A514.3 FOR FURTHER INFORMATION.
- 13 MOUNT FIXTURE AT +4'-8" A.F.F.



**2 UPPER ELECTRICAL LIGHTING PLAN**  
SCALE: 1/8"=1'-0"

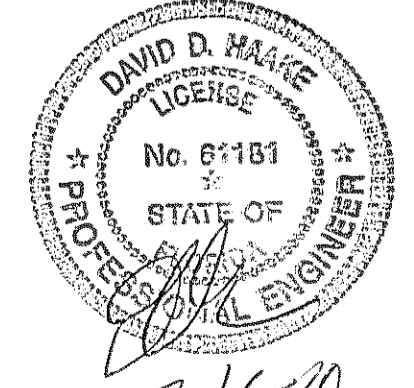
NOMENCLATURE SHALL BE ENGRAVED BY PLATE MANUFACTURER. PLATE SHALL BE STAINLESS STEEL WITH 3/16" LETTERS FILLED WITH BLACK PAINT.



USE SPDT CENTER-OFF SWITCHES FOR SIGNS  
SEE PLANS FOR NUMBER OF LANES AND CORRECT SWITCHING SEQUENCE  
LANE SWITCHES SHALL COORDINATE WITH DRIVE-THRU LANE NUMBERS

**3 DRIVE-THRU SWITCHING STATION**  
SCALE: NO SCALE

PROFESSIONAL ENGINEER  
David D. Haake  
FL PE# -  
61181



DATE:  
3-16-20



10370 RICHMOND AVENUE, SUITE 370  
HOUSTON, TX 77042  
TEL 713 783 7707 FAX 713 783 7797  
www.hel-eng.com  
95000069  
FL CORPORATE NUMBER: EB 7406  
EXPIRES 02/28/11