

TYPICAL PANEL SCHEDULES

NON-SERVICE ENTRANCE RATED		PANEL PP (SECTION 1)		CLASS: 100KAIC SERIES RATED	
208Y/120 VOLTS, 3Ø, 4W		400 AMP MAIN LUGS ONLY		NEUTRAL: INSO/ISOLATED	
KVA CONN	REMARKS OR EQUIPMENT SERVED	WIRE SIZE	TRIP AMPS	CIRCUIT NO.	TYPE
RECEPTACLES - SALES AREA	12 20 1	2 #20	12	LIGHTING - EMERG/EGRESS	(30%)
RECEPTACLES - CHECKOUT	12 20 3	4 20	12	LIGHTING - SALES AREA	(30%)
(IG) CASH REGISTER	12 20 5	6 20	12	LIGHTING - SALES AREA	(30%)
(IG) CASH REGISTER	12 20 7	8 20	12	LIGHTING - SALES AREA	(30%)
SPARE	12 20 9	10 20	12	LIGHTING - SALES AREA	(30%)
COKE MACHINE	12 20 11	12 20	12	LIGHTING - RECEIVING	(30%)
PROMO DISPLAY (2)	12 20 13	14 20	12	LIGHTING - SALES AREA	(70%)
RECEPTACLES - EXTERIOR	12 20 15	16 20	12	LIGHTING - SALES AREA	(70%)
RECEPTACLES - EXTERIOR	12 20 17	18 20	12	LIGHTING - SALES AREA	(70%)
RECEPTACLES - OFFICE	12 20 19	20 20	12	LIGHTING - SALES AREA	(70%)
RECEPTACLES - SALES AREA	12 20 21	22 20	12	LIGHTING - SALES AREA	(70%)
RECEPTACLES - SALES AREA	12 20 23	24 20	12	LIGHTING - SALES AREA	(70%)
RECEPTACLES - SALES AREA	12 20 25	26 20	12	LIGHTING - SALES AREA	(70%)
SPARE	12 20 27	28 20	-	SPARE	(70%)
UNI-CRU / ATM	12 20 29	30 20	12	NUTECH ALARM SYSTEM	
HAND DRYER	12 31	32 20	12	QUSIDE ALARM SYSTEM	
HAND DRYER	12 33	34 20	12	LIGHTING CONTROL CIRCUIT	
WATER HEATER	12 35	36 20	12	EAS	
SIGNAL BEL	12 37	38 20	12	TELEPHONE BOARD	
HEAT TAPE	12 39	40 20	12	SPARE	
IRRIGATION SYSTEM	12 41	42 20	12	SPARE	
SUBTOTAL		TOTAL KVA		SUBTOTAL	

● PROVIDE HANDLE LOOKING DEVICE (30%) 30%LIGHTING (SWITCHING DUTY RATED BREAKER)
 PROVIDE 400A FEED THRU LUGS (70%) 70%LIGHTING (SWITCHING DUTY RATED BREAKER)

NON-SERVICE ENTRANCE RATED		PANEL PP (SECTION 1)		CLASS: 100KAIC SERIES RATED	
208Y/120 VOLTS, 3Ø, 4W		400 AMP MAIN LUGS ONLY		NEUTRAL: INSO/ISOLATED	
KVA CONN	REMARKS OR EQUIPMENT SERVED	WIRE SIZE	TRIP AMPS	CIRCUIT NO.	TYPE
SPARE	-	20	43	44 20	LIGHTING - PARAPET SIGN (PC)
FREEZER	12 20 45	46 20	-	SPARE (PC)	
COOLER	12 20 47	48 20	10	LIGHTING - ROAD SIGN (PC)	
COOLER	12 20 49	50 20	12	LIGHTING - CANOPY (PC)	
COOLER	10 20 51	52 20	10	LIGHTING - EXTERIOR BLDG. (PC)	
COOLER	10 20 53	54 20	10	LIGHTING - EXTERIOR BLDG. (PC)	
UH-1	12 20 55	56 20	10	LIGHTING - EXTERIOR BLDG. (PC)	
SPACE ONLY	-	57	-	58 20	LIGHTING - FLOODS (PC)
SPACE ONLY	-	59	-	60 20	LIGHTING - FLOODS (PC)
SPACE ONLY	-	61	-	62 20	SPARE (PC)
SPACE ONLY	-	63	-	64 20	SPARE (PC)
SPACE ONLY	-	65	-	66 20	SPARE (PC)
SPACE ONLY	-	67	-	68 20	SPACE ONLY (PC)
SPACE ONLY	-	69	-	70 20	SPACE ONLY (PC)
SPACE ONLY	-	71	-	72 20	SPACE ONLY (PC)
SPACE ONLY	-	73	-	74 20	SPACE ONLY (PC)
SPACE ONLY	-	75	-	76 20	SPACE ONLY (PC)
SPACE ONLY	-	77	-	78 20	SPACE ONLY (PC)
AC-1 (MAX 150A BREAKER)	79	80	-	81	
	81	82	-	82	
	83	84	-	83	
SUBTOTAL		TOTAL KVA		SUBTOTAL	

● PROVIDE HANDLE LOOKING DEVICE (PC) PHOTOCELL CONTROLLED

ELECTRICAL WHIP W/PIGTAIL SCHEDULE

QTY	ITEM #	DESCRIPTION	POWER POLES	NOTES	LENGTH OF WHIP
3	ID3 - 000MW055	STANDARD STARTING CONNECTOR (BROWN PIGTAIL)	CHECKOUTS (2), PROMO (2), COKE	SEE XXXXX	1,6
6	ID4-IG - 000MW055A	ISOLATED GROUND STARTING CONNECTOR (GREEN PIGTAIL)	CHECKOUTS (2), UNICRU, EAS (2), ATM		1,4,7
1	624FDS005	35' WHIP SET 1900V & 115V (BROWN PIGTAIL)	FREEZER AND COOLERS		13,14
0	624FDS007	FOR SINGLE PHASE WHIP 1DB-38FT (REQ. AS 3RD WHIP)	FREEZER AND COOLERS		13,14
0	000MW054F	RECEPTACLE ASSEMBLY (BROWN PIGTAIL)	SECURITY MONITO		18

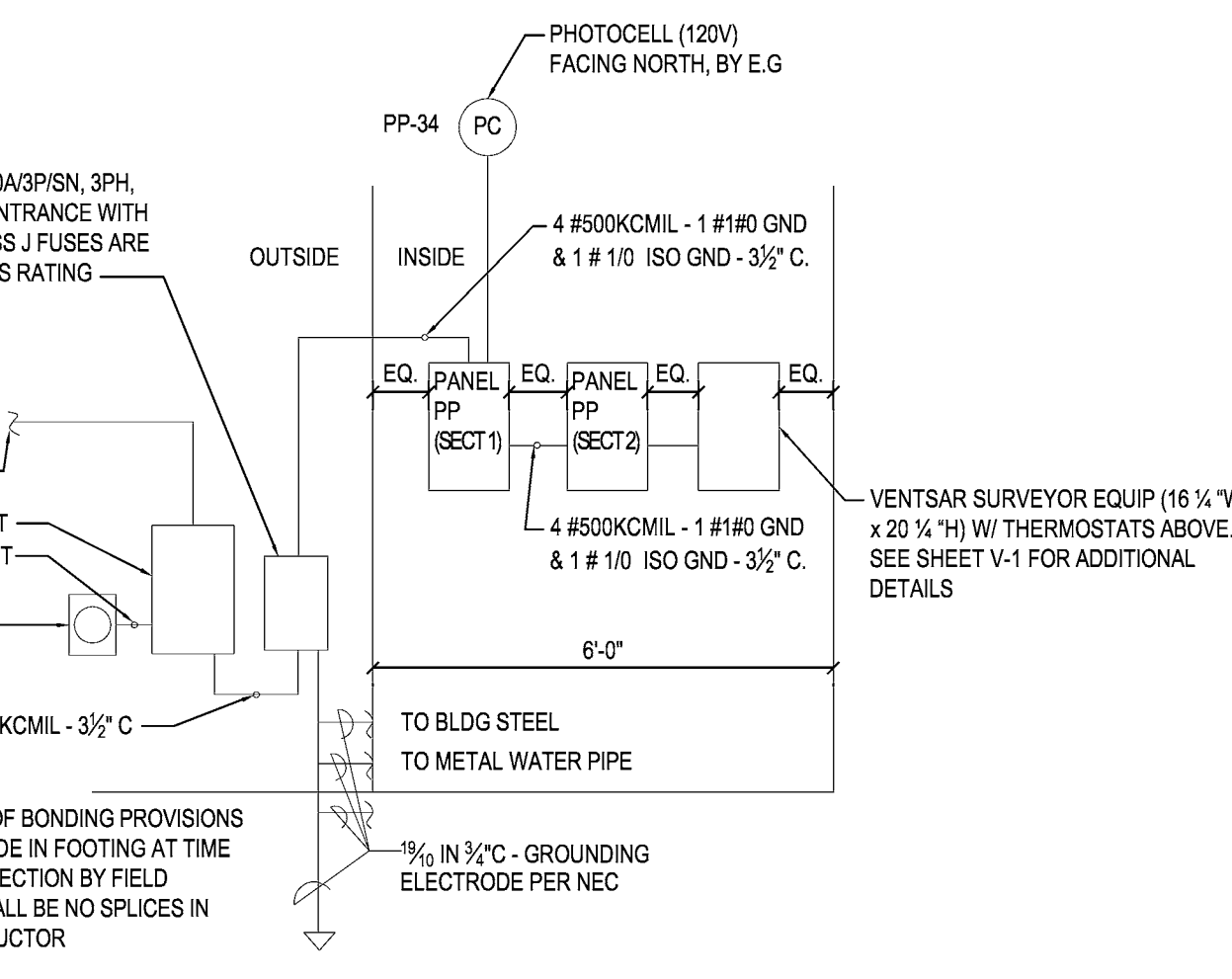
NOTE: CONFIRM EXACT LOCATION OF ALL J-BOXES WITH FDS PROJECT MANAGER PRIOR TO INSTALLATION. MOUNT ALL J-BOXES AT 12'-0" AFF. CONTACT D&P CUSTOM LIGHTS AT (800) 231-2200, ATTN: TAMMY FOR WHIPS WITH PIGTAILS FOR CONNECTION TO J-BOXES ABOVE CEILING.

PROVIDE WHIPS FOR ALL PIGTAIL LOCATIONS (SEE SCHEDULE)

NOTE: SEE SHEET A-101 FOR RESTROOMS PLUMBING AND ELECTRICAL INFORMATION

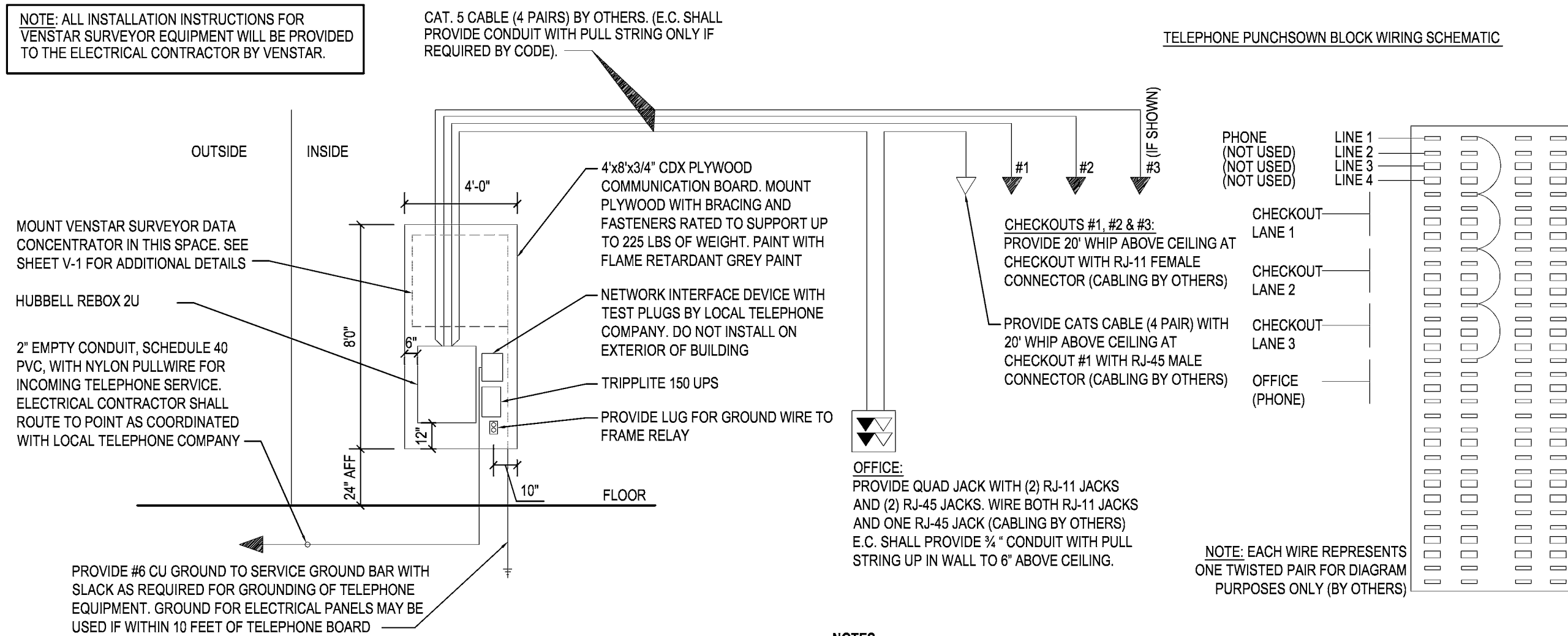
1 Typical Panel Schedules
 SCALE: NTS

2 Telephone Board Diagram
 SCALE: NTS

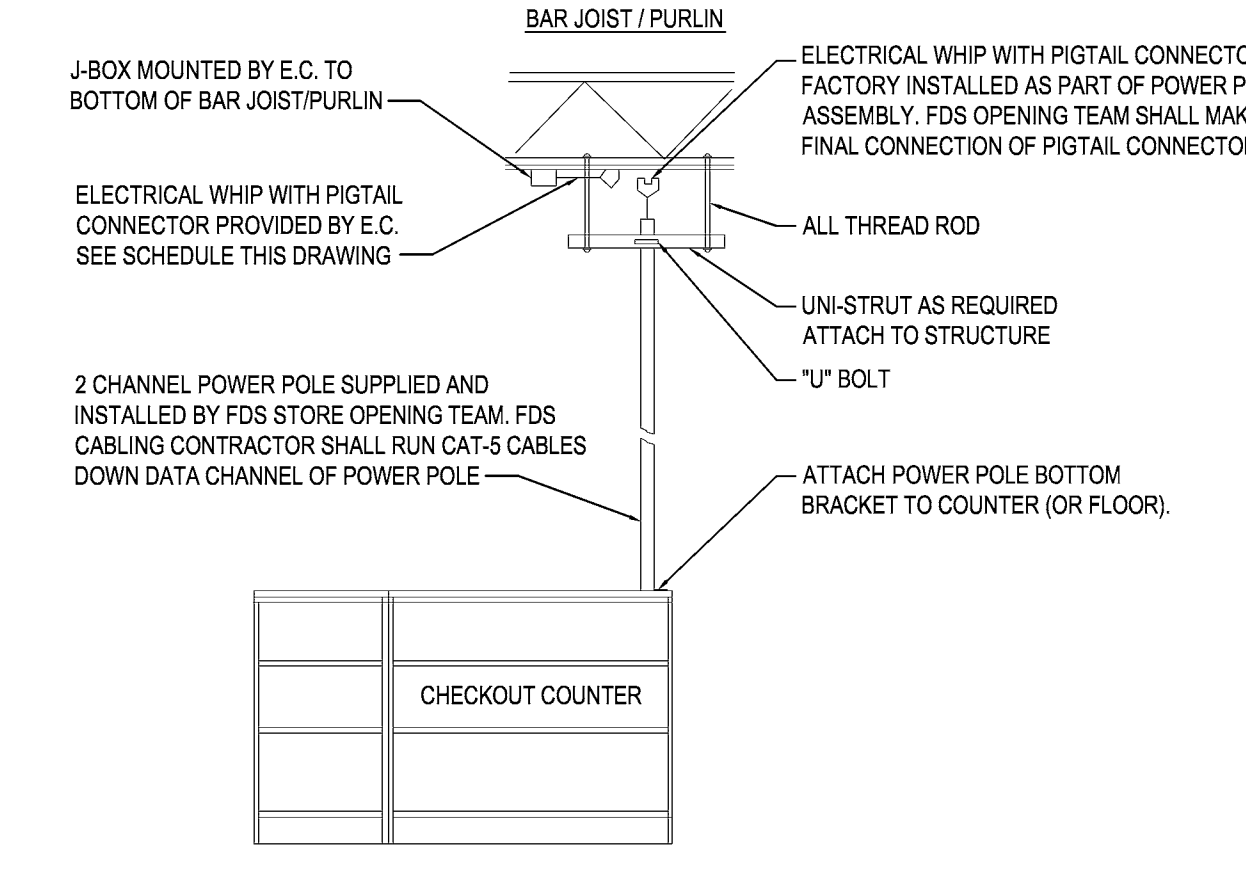


3 Power Riser Diagram
 SCALE: NTS

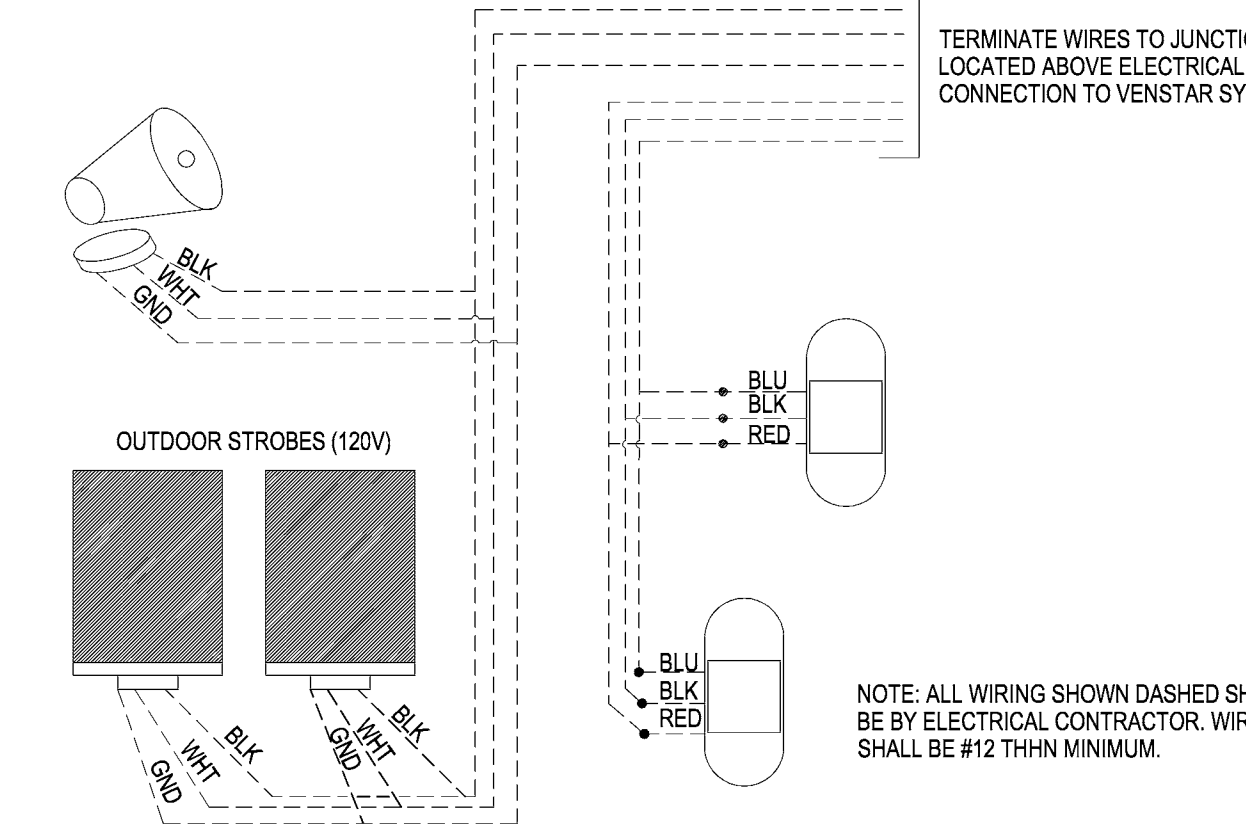
NOTE: ELECTRICAL CONTRACTOR SHALL PROVIDE NEW METER BASE AND CT CABINET. OVERHEAD ELECTRICAL UTILITY SERVICE BY LOCAL UTILITY. COORDINATE EXACT REQUIREMENTS WITH LOCAL UTILITY



- NOTES:**
- ALL PHONE AND DATA LINES SHALL BE RUN BY FAMILY DOLLAR'S CABLING SUBCONTRACTOR. INSTALLATION SHALL COMPLY WITH ALL CITY & STATE CODES. E.C. SHALL BE RESPONSIBLE FOR PROVIDING CONDUIT WITH PULL STRING FOR ALL PHONE AND DATA LINES WHERE REQUIRED BY CODE.
 - CONDUIT FOR INCOMING TELEPHONE SERVICE SHALL BE RUN UP INSIDE FACE OF EXTERIOR WALL TO DMARC ON TELEPHONE BOARD INSIDE BUILDING. DO NOT INSTALL CONDUIT EXPOSED ON FACE OF EXTERIOR WALL.



4 Power Pole Installation Detail
 SCALE: NTS



5 Exterior Motion Sensor Detail
 SCALE: NTS

LIS

ARCHITECTURE
ENGINEERING
LAND SURVEYING

21430 Palm Beach Blvd.
Arlon, Fla. 33920
Phone: (239) 693-9244
facsimile: (239) 693-9828

CA 400292005
CO 000000000
LB 000000000

2872 West State Road 436
Suite 2064, Oviedo, FL 32765
Phone: (321) 244-0402
facsimile: (321) 244-9419

CLIENT NAME
STEPHENS BARRIOS
1231 NORTH ORANGE AVE, SUITE B
ORLANDO, FLORIDA, 32804

PROJECT NAME
**FAMILY DOLLAR STORE
GUN RANGE & RETAIL STORE**
BELLEVUE, MARION COUNTY, FLORIDA

SHEET TITLE
Electrical Schedule and Details

SEAL

ROLAND ABOUACHACRA
AR 93723

RELEASE	DATE
1	
2	
3	
4	
5	
6	

PROJECT NO.
2010-023FD

ISSUE DATE
5/18/10

DRAWN: DH CHECKED: CS

E-102

LIS EXPRESSLY RESERVES ITS COPYRIGHT AND ALL OTHER PROPERTY RIGHTS TO THESE DOCUMENTS AND THEIR DESIGN. HENCE, THEY ARE NOT TO BE REPRODUCED.