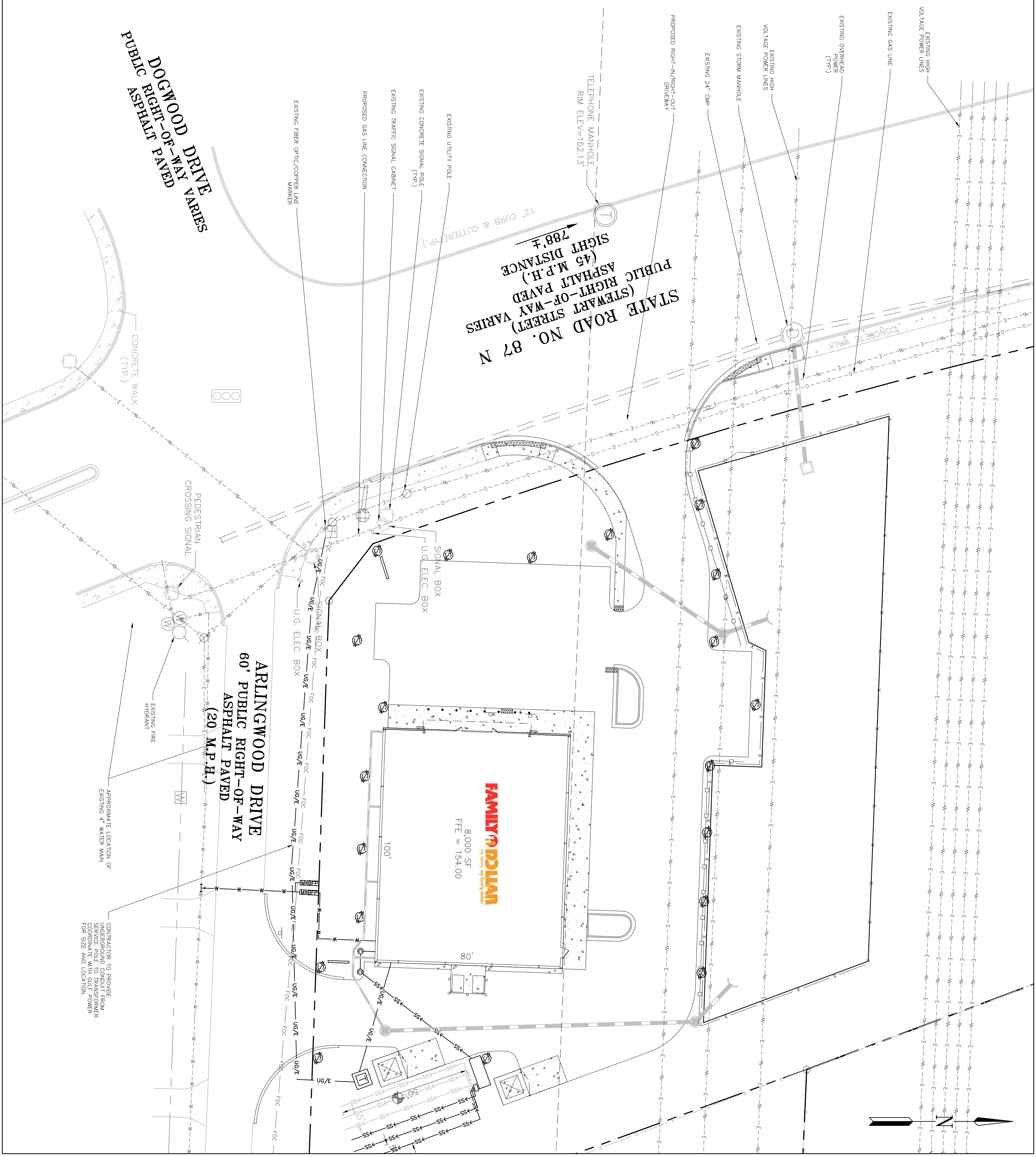


GENERAL NOTES:

- 1) COOPERATE AS REQUIRED WITH SANTA ROSA COUNTY/CITY OF MILTON INSPECTIONS DURING CONSTRUCTION FOR REQUIRED INSPECTIONS.
- 2) OWNER SHALL BE RESPONSIBLE FOR ANY REPAIR OR REPLACEMENT OF ANY DAMAGE TO EXISTING UTILITIES OR STRUCTURES (S) THAT MAY OCCUR DURING TO MAINTENANCE OF SEWER, WATER, STORM DRAIN OR SANTA ROSA COUNTY/CITY OF MILTON.
- 3) NO LANE CLOSURES DURING THE HOURS OF 6:00 AM TO 9:00 AM AND 3:00 PM TO 6:00 PM.
- 4) NO LANE CLOSURES ON HOLIDAYS, INCLUDING THE DAY PRECEDING AND FOLLOWING.
- 5) ALL LANES MUST BE OPEN FOR TRAFFIC DURING AN EVACUATION NOTICE OF A FIRE OR OTHER EMERGENCY AND SHALL REMAIN OPEN FOR THE MAINTENANCE ENGINEER OR HIS DESIGNER AS DIRECTED BY THE LOCAL MAINTENANCE ENGINEER OR HIS DESIGNER.
- 6) NO WORK SHALL BE PERFORMED IN THE RIGHT-OF-WAY UNTIL THE PROPER MAINTENANCE SPECIFICATIONS ARE MET AND THE APPROPRIATE SOD SERIES INDEX, A CERTIFIED WORKSITE TRAFFIC SUPERVISOR SHALL SET UP THE MOT.
- 7) ALL STIPING WITHIN THE RIGHT-OF-WAY SHALL BE THERMOPLASTIC.
- 8) ALL NEWLY PLACED SOD AND ALL SEEDED AREAS SHALL BE WATERED UNTIL GRASSES ESTABLISHED.
- 9) USE DETECTABLE WARNINGS PROVIDING A LIGHT-ON-DARK OR DARK-ON-LIGHT COLOR CONTRAST WITH ADJOINING SURFACES THAT MEET A 70% CONTRAST RATIO FOR VISIBILITY. DETECTABLE WARNINGS SHALL BE PLACED AT 12" ON-CENTER AND INCLUDE: BLACK, BROWN, BRICK-RED, GREEN AND SAFETY YELLOW (US-ANSI Z53.1-1991, 6.3, INTERNATIONAL-ISO 3864-1984(3)) AS DESCRIBED IN THE DRAWINGS OR AS APPROVED BY THE ENGINEER. THE COLOR MUST BE INTEGRAL WITH AND CONSISTENT THROUGHOUT THE MATERIAL. DO NOT USE THE COLOR BLUE.
- 10) REQUIRED PAVEMENT SPECIFICATION IN RIGHT-OF-WAY:
 - Z SP AS 5X (LR 100)
 - 7 L SP AS 5X (LR 100)
 - 8 L SP AS 5X (LR 100)
 - 9 L SP AS 5X (LR 100)
 - 10 L SP AS 5X (LR 100)
 - 11 L SP AS 5X (LR 100)
 - 12 L SP AS 5X (LR 100)
 - 13 L SP AS 5X (LR 100)
 - 14 L SP AS 5X (LR 100)
 - 15 L SP AS 5X (LR 100)
 - 16 L SP AS 5X (LR 100)
 - 17 L SP AS 5X (LR 100)
 - 18 L SP AS 5X (LR 100)
 - 19 L SP AS 5X (LR 100)
 - 20 L SP AS 5X (LR 100)
 - 21 L SP AS 5X (LR 100)
 - 22 L SP AS 5X (LR 100)
 - 23 L SP AS 5X (LR 100)
 - 24 L SP AS 5X (LR 100)
 - 25 L SP AS 5X (LR 100)
 - 26 L SP AS 5X (LR 100)
 - 27 L SP AS 5X (LR 100)
 - 28 L SP AS 5X (LR 100)
 - 29 L SP AS 5X (LR 100)
 - 30 L SP AS 5X (LR 100)
 - 31 L SP AS 5X (LR 100)
 - 32 L SP AS 5X (LR 100)
 - 33 L SP AS 5X (LR 100)
 - 34 L SP AS 5X (LR 100)
 - 35 L SP AS 5X (LR 100)
 - 36 L SP AS 5X (LR 100)
 - 37 L SP AS 5X (LR 100)
 - 38 L SP AS 5X (LR 100)
 - 39 L SP AS 5X (LR 100)
 - 40 L SP AS 5X (LR 100)
 - 41 L SP AS 5X (LR 100)
 - 42 L SP AS 5X (LR 100)
 - 43 L SP AS 5X (LR 100)
 - 44 L SP AS 5X (LR 100)
 - 45 L SP AS 5X (LR 100)
 - 46 L SP AS 5X (LR 100)
 - 47 L SP AS 5X (LR 100)
 - 48 L SP AS 5X (LR 100)
 - 49 L SP AS 5X (LR 100)
 - 50 L SP AS 5X (LR 100)
 - 51 L SP AS 5X (LR 100)
 - 52 L SP AS 5X (LR 100)
 - 53 L SP AS 5X (LR 100)
 - 54 L SP AS 5X (LR 100)
 - 55 L SP AS 5X (LR 100)
 - 56 L SP AS 5X (LR 100)
 - 57 L SP AS 5X (LR 100)
 - 58 L SP AS 5X (LR 100)
 - 59 L SP AS 5X (LR 100)
 - 60 L SP AS 5X (LR 100)
 - 61 L SP AS 5X (LR 100)
 - 62 L SP AS 5X (LR 100)
 - 63 L SP AS 5X (LR 100)
 - 64 L SP AS 5X (LR 100)
 - 65 L SP AS 5X (LR 100)
 - 66 L SP AS 5X (LR 100)
 - 67 L SP AS 5X (LR 100)
 - 68 L SP AS 5X (LR 100)
 - 69 L SP AS 5X (LR 100)
 - 70 L SP AS 5X (LR 100)
 - 71 L SP AS 5X (LR 100)
 - 72 L SP AS 5X (LR 100)
 - 73 L SP AS 5X (LR 100)
 - 74 L SP AS 5X (LR 100)
 - 75 L SP AS 5X (LR 100)
 - 76 L SP AS 5X (LR 100)
 - 77 L SP AS 5X (LR 100)
 - 78 L SP AS 5X (LR 100)
 - 79 L SP AS 5X (LR 100)
 - 80 L SP AS 5X (LR 100)
 - 81 L SP AS 5X (LR 100)
 - 82 L SP AS 5X (LR 100)
 - 83 L SP AS 5X (LR 100)
 - 84 L SP AS 5X (LR 100)
 - 85 L SP AS 5X (LR 100)
 - 86 L SP AS 5X (LR 100)
 - 87 L SP AS 5X (LR 100)
 - 88 L SP AS 5X (LR 100)
 - 89 L SP AS 5X (LR 100)
 - 90 L SP AS 5X (LR 100)
 - 91 L SP AS 5X (LR 100)
 - 92 L SP AS 5X (LR 100)
 - 93 L SP AS 5X (LR 100)
 - 94 L SP AS 5X (LR 100)
 - 95 L SP AS 5X (LR 100)
 - 96 L SP AS 5X (LR 100)
 - 97 L SP AS 5X (LR 100)
 - 98 L SP AS 5X (LR 100)
 - 99 L SP AS 5X (LR 100)
 - 100 L SP AS 5X (LR 100)

LEGEND

- EXISTING FENCE LINE
- PROPERTY LINE
- EXISTING GAS LINE
- EXISTING OVERHEAD POWER LINE
- EXISTING PETROLEUM GAS LINE
- EXISTING STORM LINE
- EXISTING WATER LINE
- EXISTING BORED POWER LINE
- EXISTING FIBER OPTIC LINE
- EXISTING BURIED TELEPHONE LINE
- EXISTING CABLE TELEVISION LINE
- PROPOSED GAS LINE
- PROPOSED SANITARY SEWER LINE
- PROPOSED WATER LINE
- PROPOSED FIBER OPTIC LINE
- PROPOSED UNDERGROUND ELECTRIC
- PROPOSED STORM PIPE



PROJECT:
FAMILY DOLLAR

PROJECT# 401701

ADDRESS:
6384 HWY 87 N
MILTON, SANTA ROSA COUNTY,
FLORIDA

DEVELOPER:
Boos Development Group, Inc.
2651 MCCORMICK DRIVE
CLEARWATER, FL 33759
TEL (727) 669-2900

CONTACT:
LORA PERSSON

ENGINEER:
foresite group
Foresite Group, Inc.
5185 Peachtree Pkwy
Suite 240
Norcross, GA 30092
01770.368.1399
01770.368.1944
www.foresitegroupinc.com

SEAL:
Professional Engineer Seal for Steven M. Brant Adams, License No. 62242, State of Florida.

REVISIONS

REV	DATE	DESCRIPTION
1	10/26/09	PER FAMILY DOLLAR
2	11/17/09	FDOT COMMENTS
3	11/23/09	CITY COMMENTS
4	01/28/10	NW/WD COMMENTS
5	02/19/10	BD SET

PROJECT MANAGER: BJH
DRAWING BY: JAM
JURISDICTION: SANTA ROSA COUNTY, FL
DATE: 05/27/09
TITLE:

FDOT UTILITY PLAN

SHEET NUMBER: C-3.1

SCALE: 1" = 20'
20 10 0 20 40
SCALE IN FEET

JOB/RLE NUMBER: 163.017