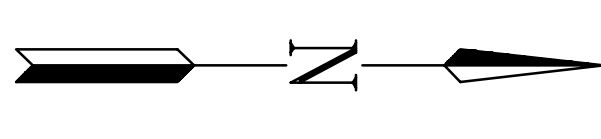
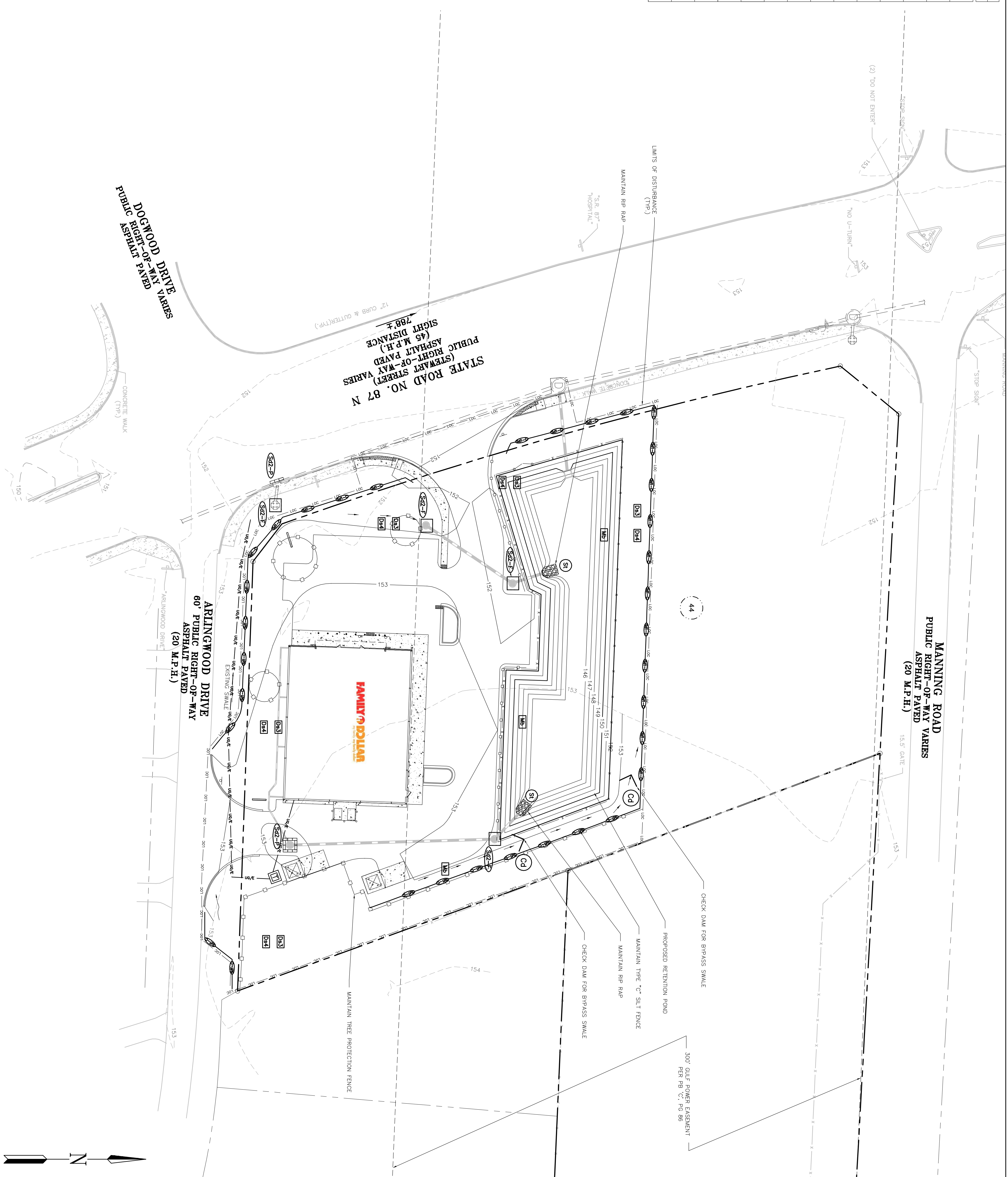


EROSION AND SEDIMENT CONTROL LEGEND	CODE	PRACTICE	DETAIL	MAP SYMBOL
	(C)	CONSTRUCTION EXIT		(C)
	(S)	SEDIMENT BARRIER		(S)
	(S2-1)	INLET SEDIMENT TRAP		(S2-1)
	(S2-2)	INLET SEDIMENT TRAP		(S2-2)
	(S2-3)	STORM DRAIN OUTLET PROTECTION		(S2-3)
	(D1)	DISTURBED AREA STABILIZATION (WITH MULCHING ONLY)		(D1)
	(D2)	DISTURBED AREA STABILIZATION (WITH TEMPORARY SEEDING)		(D2)
	(D3)	DISTURBED AREA STABILIZATION (WITH PERMANENT VEGETATION)		(D3)
	(D4)	SOODING		(D4)
	(D5)	DUST CONTROL ON DISTURBED AREAS		(D5)
	(M)	MATTING AND BLANKETING		(M)
	(C)	CHECKDAMS		(C)
	(L)	LIMITS OF DISTURBANCE		(L)
		TREE PROTECTION FENCE		

SOIL LEGEND
 44 TROUP LOAMY SAND, 0 TO 5 PERCENT SLOPES



PROJECT:
FAMILY DOLLAR

PROJECT# 401701

ADDRESS:
 6384 HWY 87 N
 MILTON, SANTA ROSA COUNTY,
 FLORIDA

DEVELOPER:
Boos Development Group, Inc.
 BOOS DEVELOPMENT GROUP, INC.
 2651 MCCORMICK DRIVE
 CLEARWATER, FL 33759
 TEL (727) 669-2900

CONTACT:
 LORA PERSSON

ENGINEER:
foresite group
 Foresite Group, Inc.
 5185 Peachtree Pkwy
 Suite 240
 Norcross, GA 30092
 91770.368, 1399
 f 1770.368, 1944
 www.foresitegroupinc.com

SEAL:

 CA. 26115

REVISIONS

PER FAMILY DOLLAR	DATE
FOOT COMMENTS	10/26/09
CITY COMMENTS	11/17/09
NW WIND COMMENTS	11/23/09
BD SET	01/28/10
	02/19/10

PROJECT MANAGER: BJH
 DRAWING BY: JAM
 JURISDICTION: SANTA ROSA COUNTY, FL
 DATE: 05/27/09

TITLE:
FINAL EROSION & SEDIMENT CONTROL PLAN

SHEET NUMBER: C-4.2
 SCALE: 1" = 30'

 SCALE IN FEET
 JOB/FILE NUMBER: 163.017

