

FAMILY DOLLAR

PROJECT# 401701

ADDRESS:
6384 HWY 87 N
MILTON, SANTA ROSA COUNTY,
FLORIDA

DEVELOPER:
Boos Development Group, Inc.
BOOS DEVELOPMENT GROUP, INC.
2651 MCCORMICK DRIVE
CLEARWATER, FL 33759
TEL (727) 669-2900

ENGINEER:
foresite group
Foresite Group, Inc.
5185 Peachtree Pkwy
Suite 240
Norcross, GA 30092
91770.368, 1399
f 1770.368, 1944
www.foresitegroupinc.com

CONTACT:
LORA PERSSON

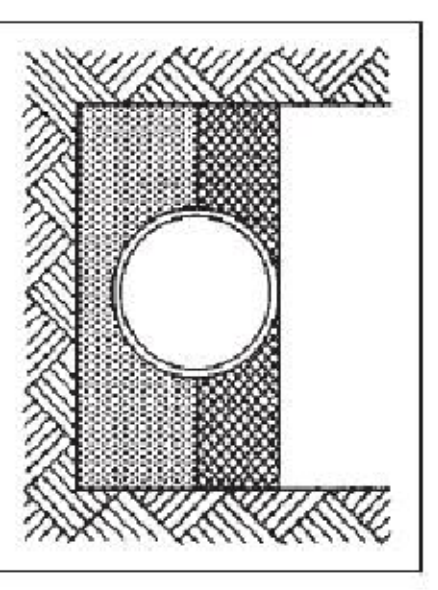
SEAL:

C.A. 26115

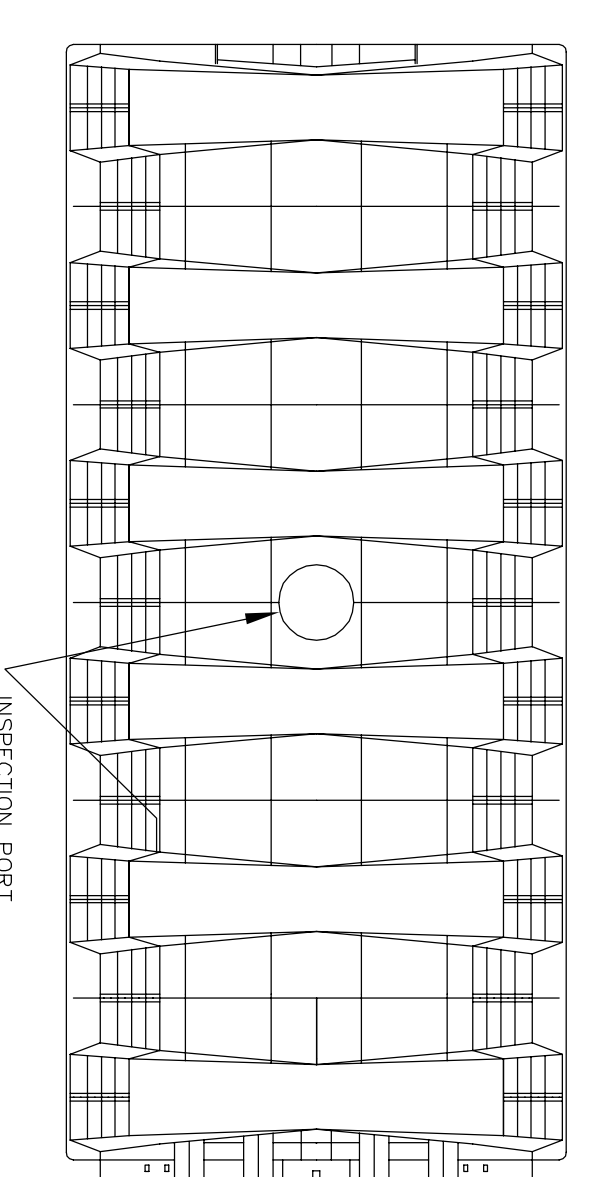
REVISIONS

PER FAMILY DOLLAR	DATE
FOOT COMMENTS	10/26/09
CITY COMMENTS	11/17/09
NW WIND COMMENTS	11/23/09
BD SET	01/28/10
	02/19/10

PROJECT MANAGER: BJH
DRAWING BY: JAM
JURISDICTION: SANTA ROSA COUNTY, FL
DATE: 05/27/09
TITLE: UTILITY DETAILS



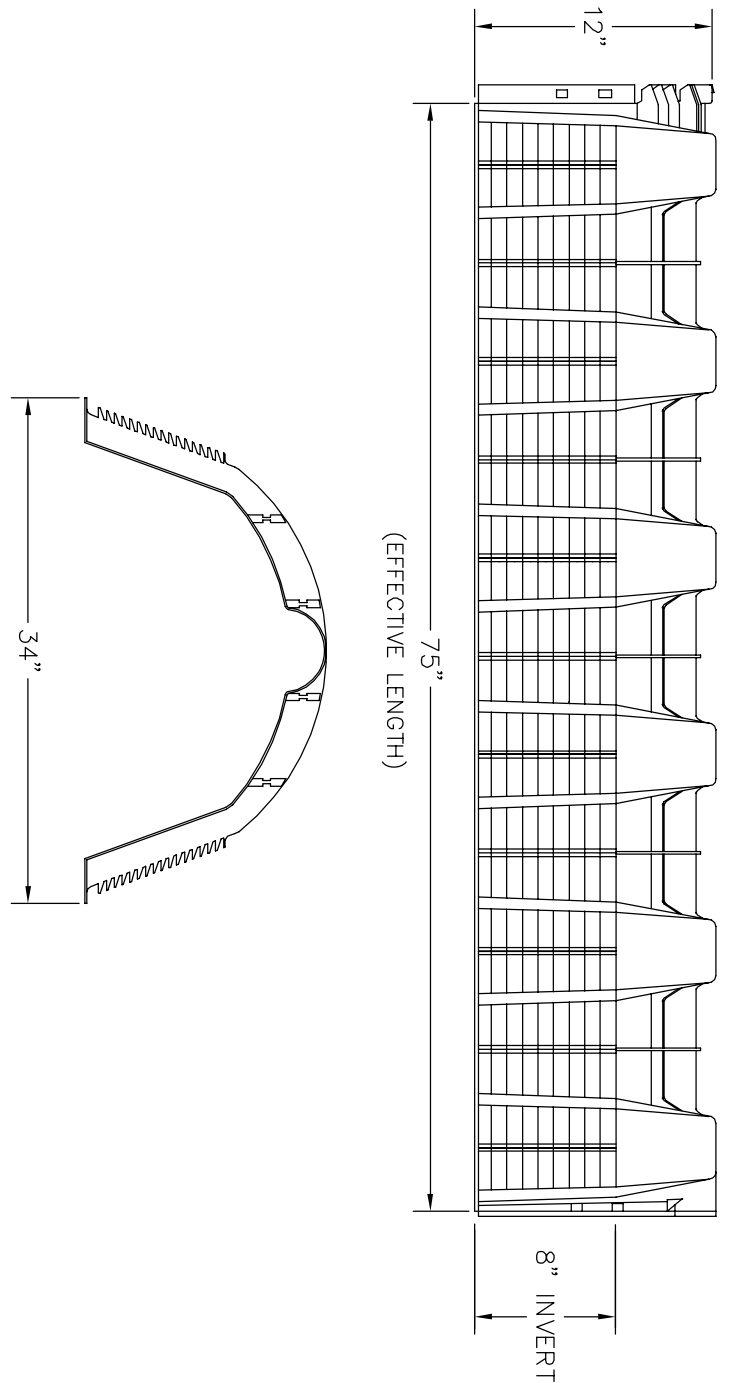
Type 5
Pipe bedded to its centerline in compacted granular material, 4-in. minimum under pipe. Compacted granular or select material to top of pipe. (Approximately 90% Standard Proctor, AASHTO 1-99.)



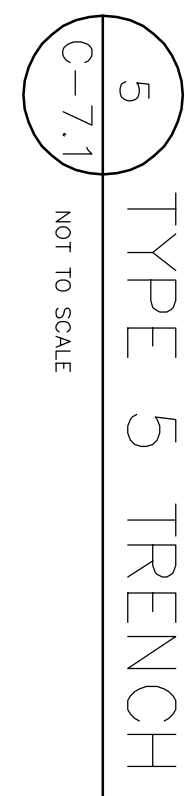
HIGH CAPACITY INFILTRATION SYSTEM

DIMENSION TABLE

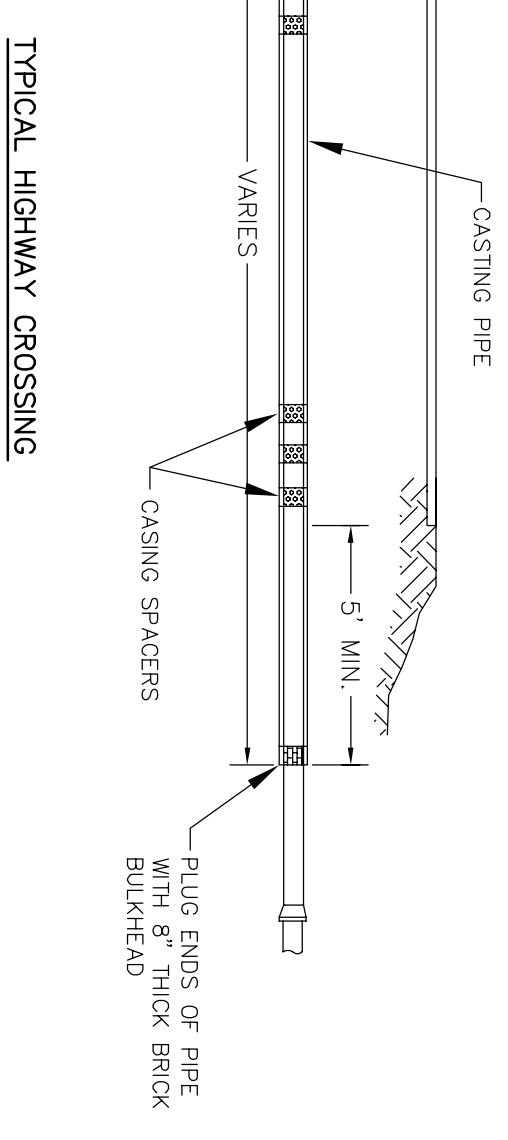
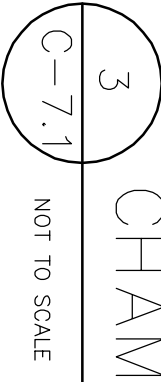
VOLUME GALLONS	W WIDTH	L1 LONG LENGTH	L2 LONG LENGTH	H HEIGHT	h
750	3'-4"	6'-8"	3'-4"	4'-6"	3'-0"
1000	3'-6"	7'-0"	3'-6"	5'-2"	3'-8"
1250	3'-9"	7'-6"	3'-9"	5'-6"	4'-0"
1500	4'-0"	8'-0"	4'-0"	5'-8"	4'-2"
1750	4'-3"	8'-6"	4'-3"	5'-10"	4'-4"
2000	4'-6"	9'-0"	4'-6"	5'-11"	4'-5"
2500	4'-9"	9'-6"	4'-9"	6'-0"	4'-6"
2250	5'-3"	10'-0"	5'-0"	6'-0"	4'-6"
3500	5'-3"	10'-6"	5'-3"	6'-4"	4'-10"
3000	5'-7"	11'-2"	5'-7"	6'-6"	5'-0"
4000	6'-0"	12'-0"	6'-0"	6'-6"	5'-0"



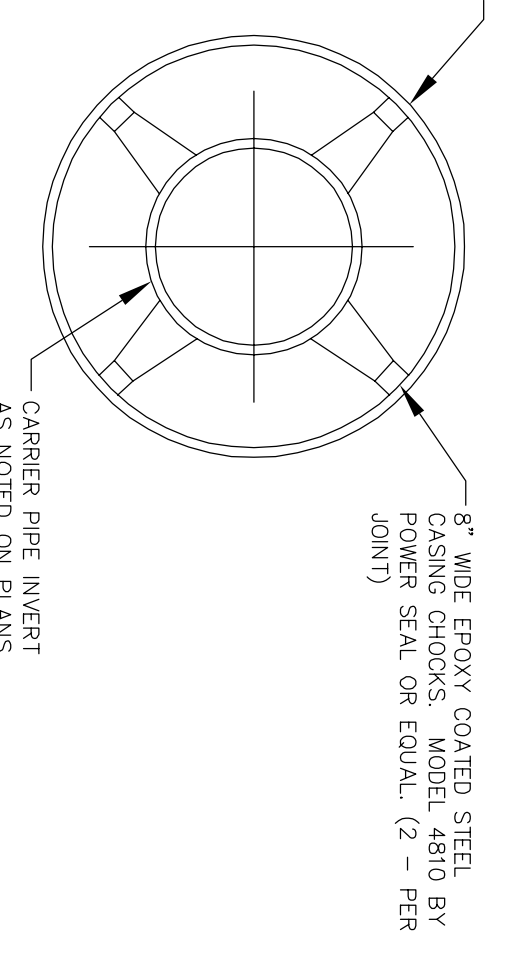
HIGH CAPACITY INFILTRATION CHAMBER DETAIL



TYPE 5 TRENCH



NOTE: CASING PIPE SHALL HAVE A PROTECTIVE COATING CONSISTING OF A COAL-TAR PRIMER COAT AND AN APPLICATION OF HOT COAL-TAR ENAMEL 5/32" (E1/32") THICK.

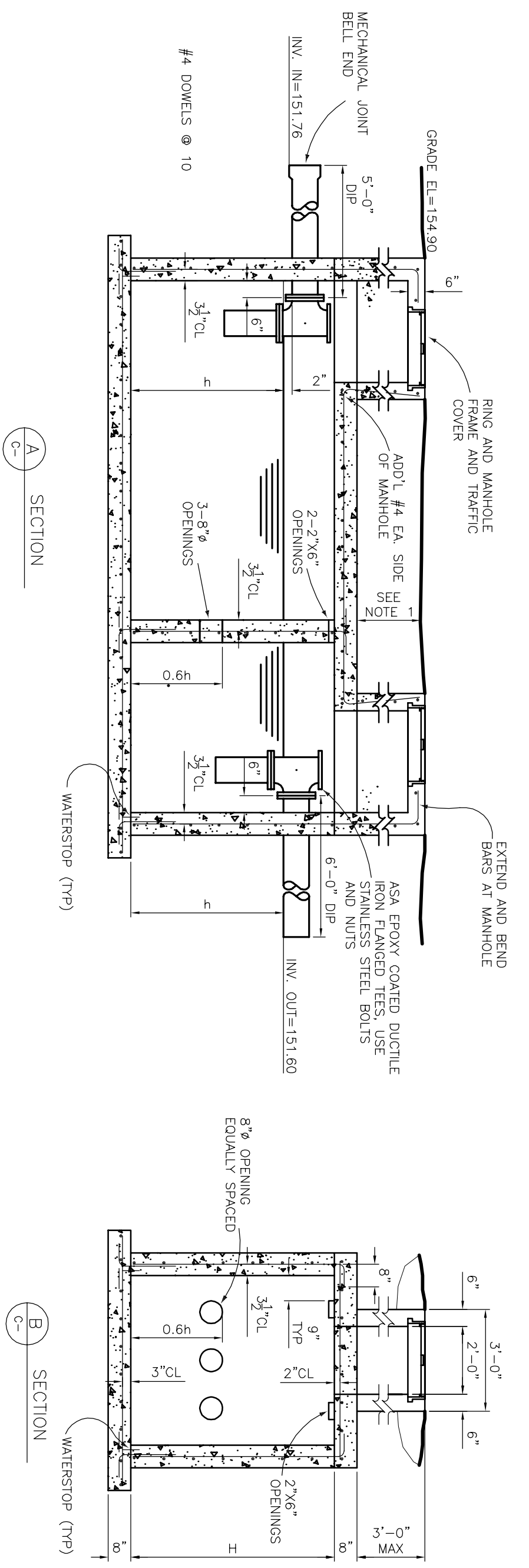
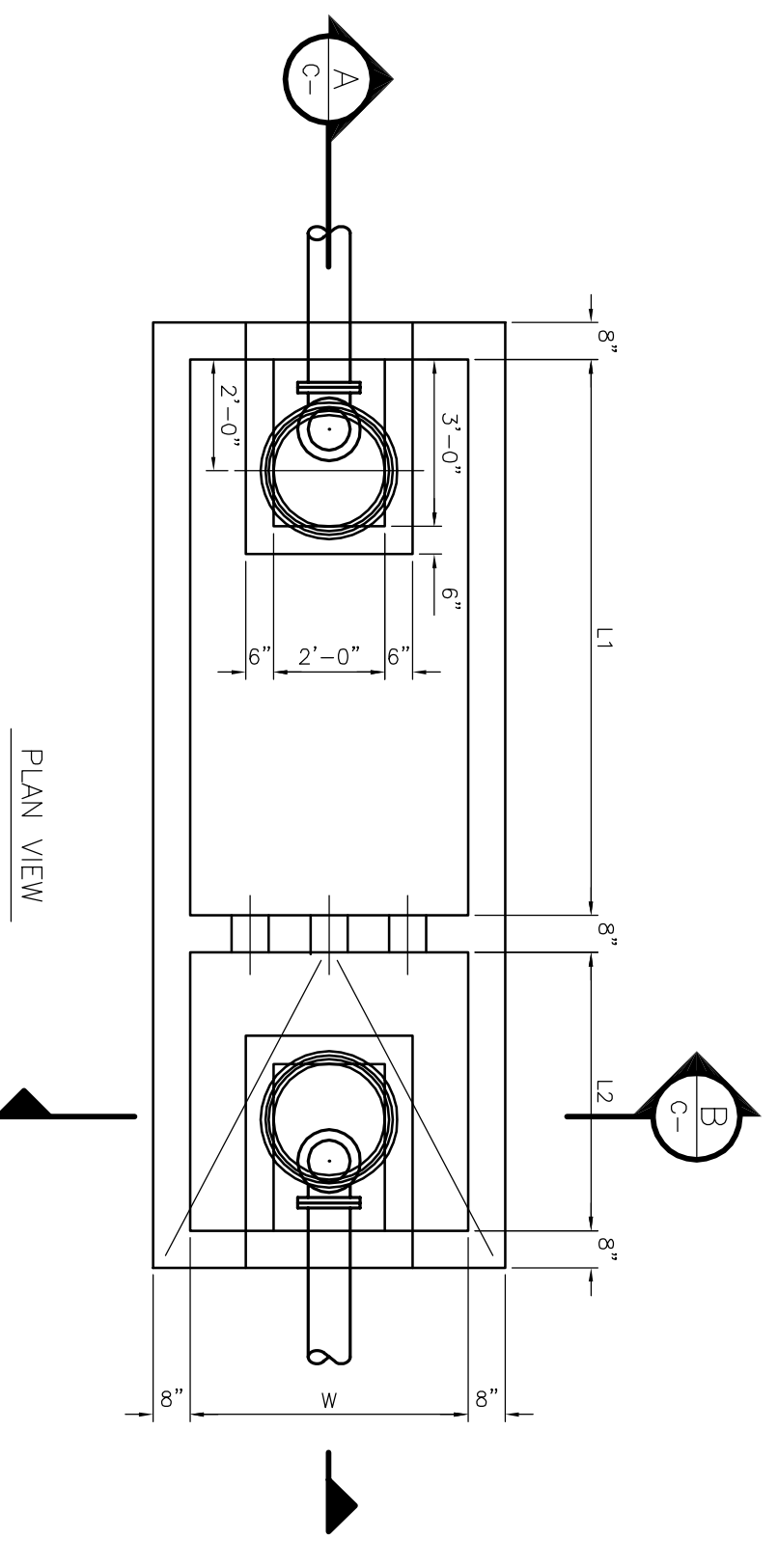


NOTE: CASING TO BE SEALED AROUND THE CARRIER PIPE WITH 8" BRICK. BULKHEAD AT EACH END SHALL BE CONSTRUCTED USING CEMENT MORTAR.

TYPICAL ENGAGEMENT SECTION FOR JACK & BORE INSTALLATION

CARRIER PIPE INSIDE DIA. IN INCHES	CASTING PIPE FOR HIGHWAY CROSSINGS NOMINAL DIA. IN INCHES	THICKNESS IN INCHES
8	16	0.250
10	18	0.250
12	20	0.313
14	24	0.344
20	30	0.438
24	36	0.500
30	42	0.500
36	48	0.500

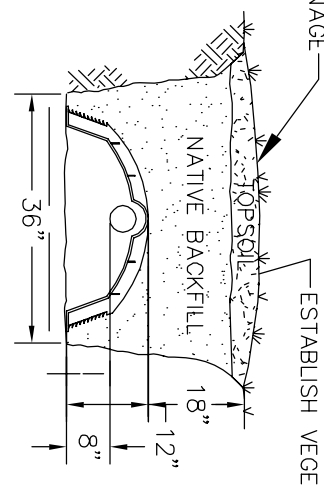
TYPICAL JACK & BORE INSTALLATION



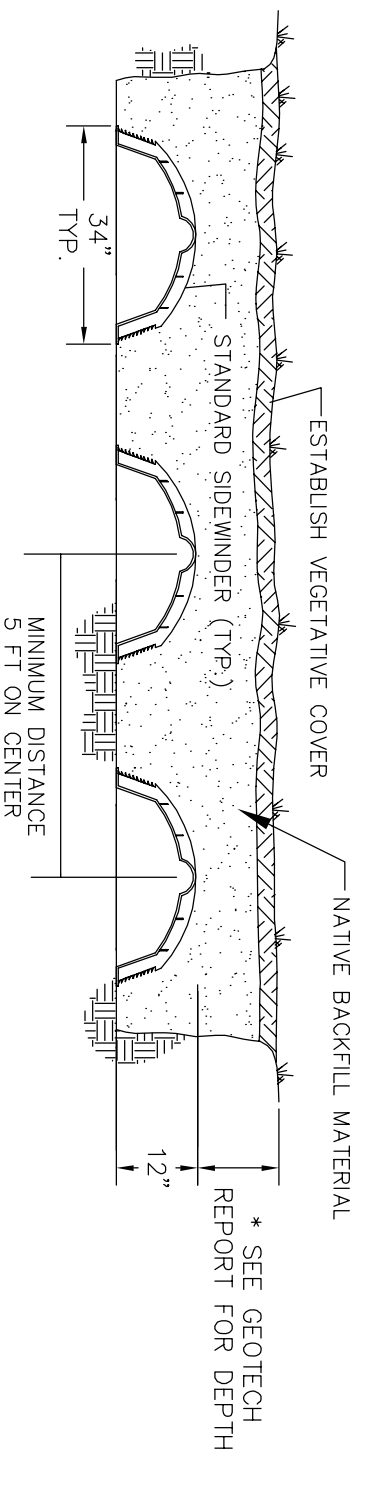
- NOTES
- TANKS ARE DESIGNED FOR 3 FEET MINIMUM OF 100 PCF FILL ON TOP.
 - ALL CONCRETE SHALL HAVE A MINIMUM STRENGTH OF 4000 PSI.
 - ALL REINFORCING BARS SHALL CONFORM TO ASTM A618.
 - MINIMUM LAP LENGTH OF SPICES SHALL BE 20" UNLESS OTHERWISE SHOWN.
 - ALL REINFORCEMENT SHALL BE #4@10".

1 1250 GALLON SEPTIC TANK

INFILTRATOR STANDARD OR STANDARD SIDEWINDER TRENCH DETAIL

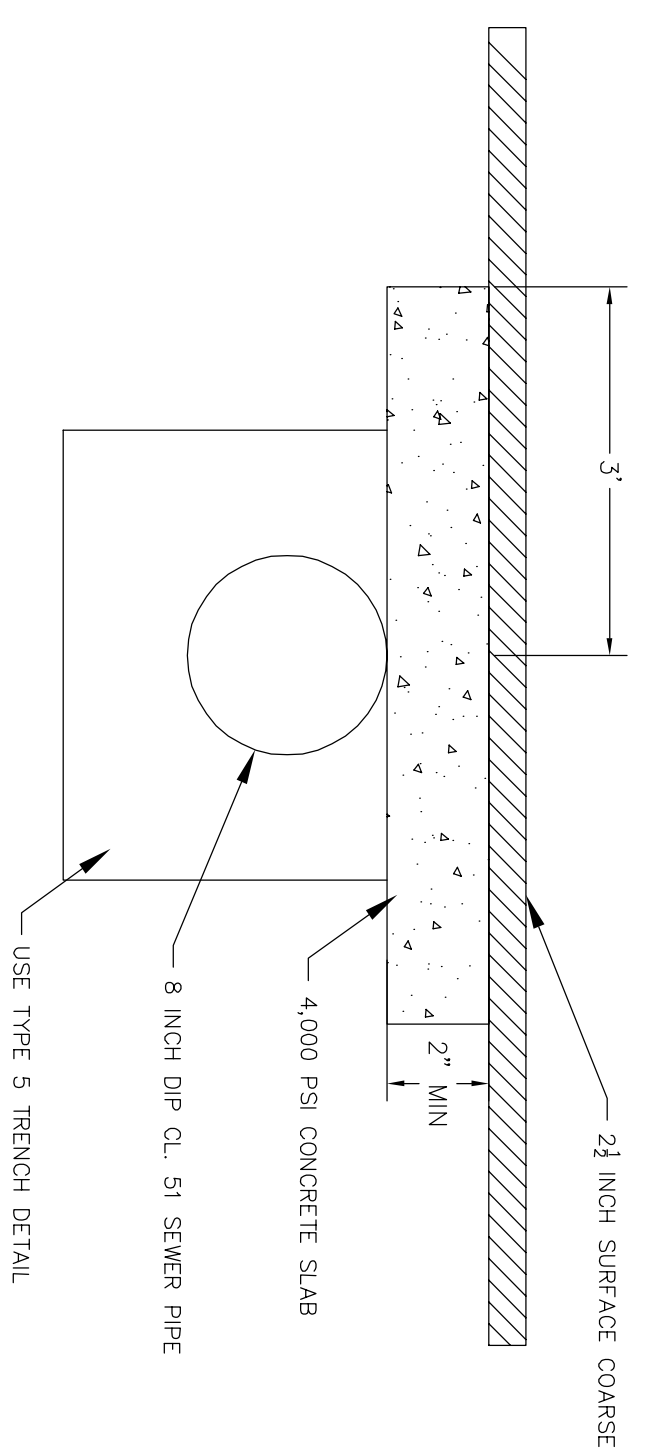


INFILTRATOR STANDARD OR STANDARD SIDEWINDER BED DETAIL



INFILTRATION STANDARD TRENCH & BED DETAIL

6 MINIMUM SANITARY COVER DETAIL



2 INFILTRATION CHAMBERS SHALL RUN ALONG CONTOUR LINES.

NOT TO SCALE