

PROJECT:
FAMILY DOLLAR

PROJECT# 401701

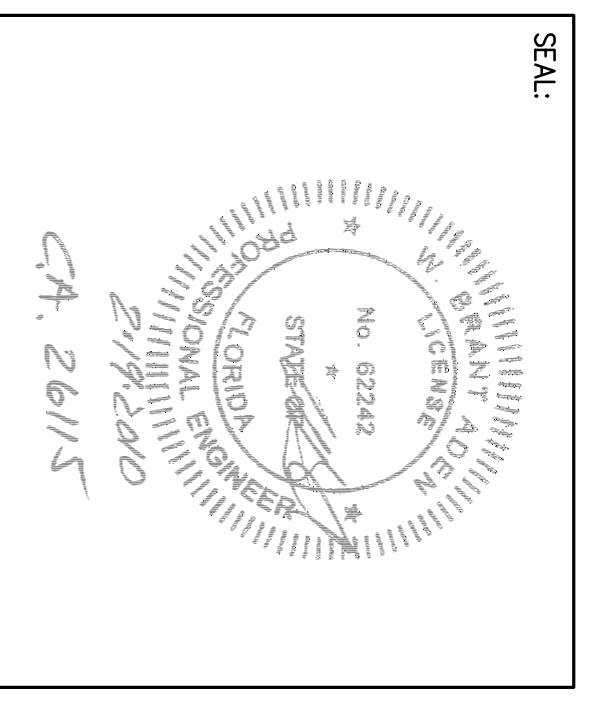
ADDRESS:
6384 HWY 87 N
MILTON, SANTA ROSA COUNTY,
FLORIDA

DEVELOPER:
Boos Development Group, Inc.
BOOS DEVELOPMENT GROUP, INC.
2651 MCCORMICK DRIVE
CLEARWATER, FL 33756
TEL (727) 669-2900

CONTACT: LORA PERSSON

ENGINEER:
foresite group

Foresite Group, Inc.
5185 Peachtree Pkwy
Suite 240
Norcross, GA 30092
P 1 770 368 1399
F 1 770 368 1944
www.foresitegroupinc.com



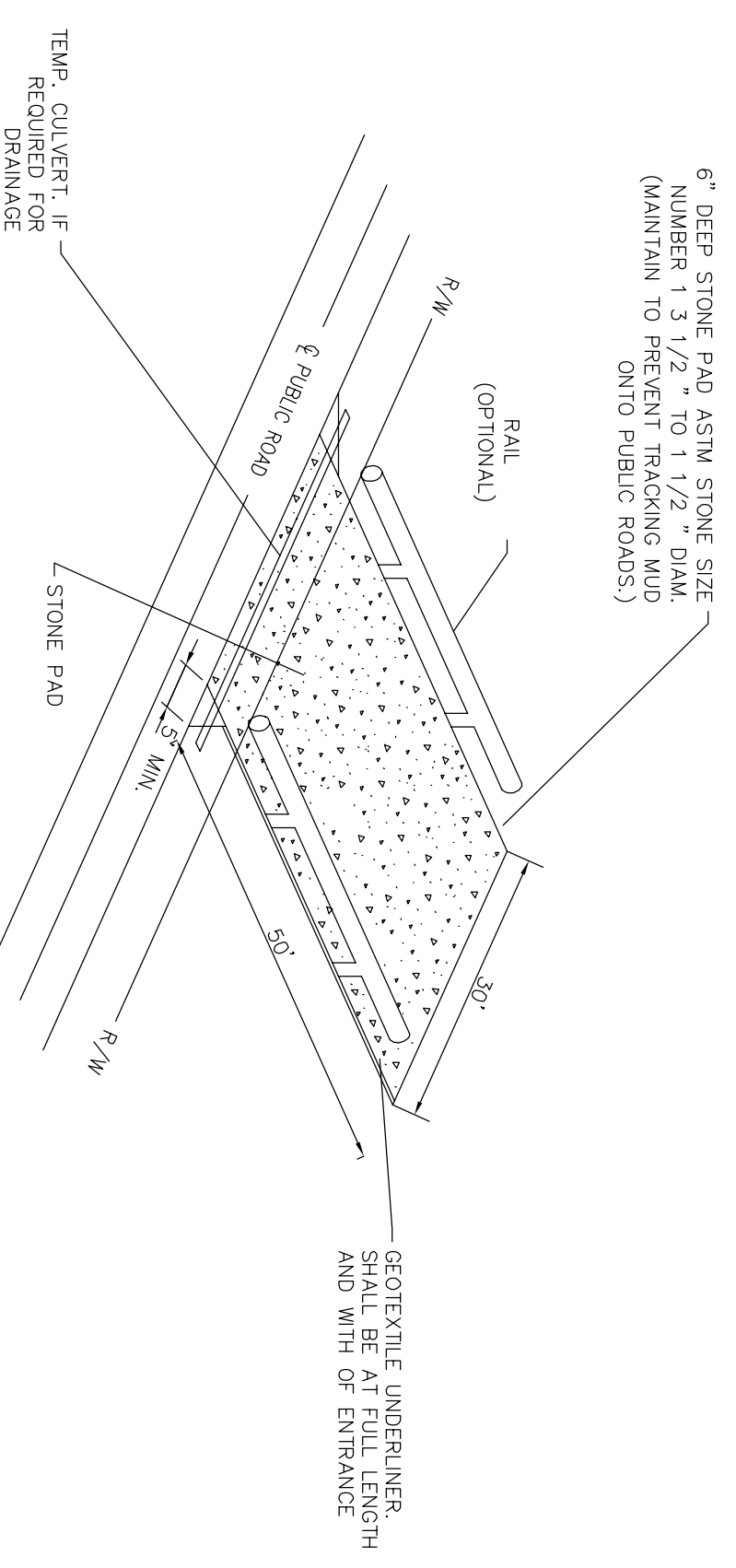
REVISIONS	DATE
FEED FAMILY DOLLAR	10/26/09
FOOT COMMENTS	11/17/09
CITY COMMENTS	11/23/09
M/W/MD COMMENTS	01/28/10
BD SET	02/19/10

PROJECT MANAGER: BJH
DRAWING BY: JAM
JURISDICTION: SANTA ROSA COUNTY, FL
DATE: 05/27/09
TITLE:

EROSION CONTROL DETAILS

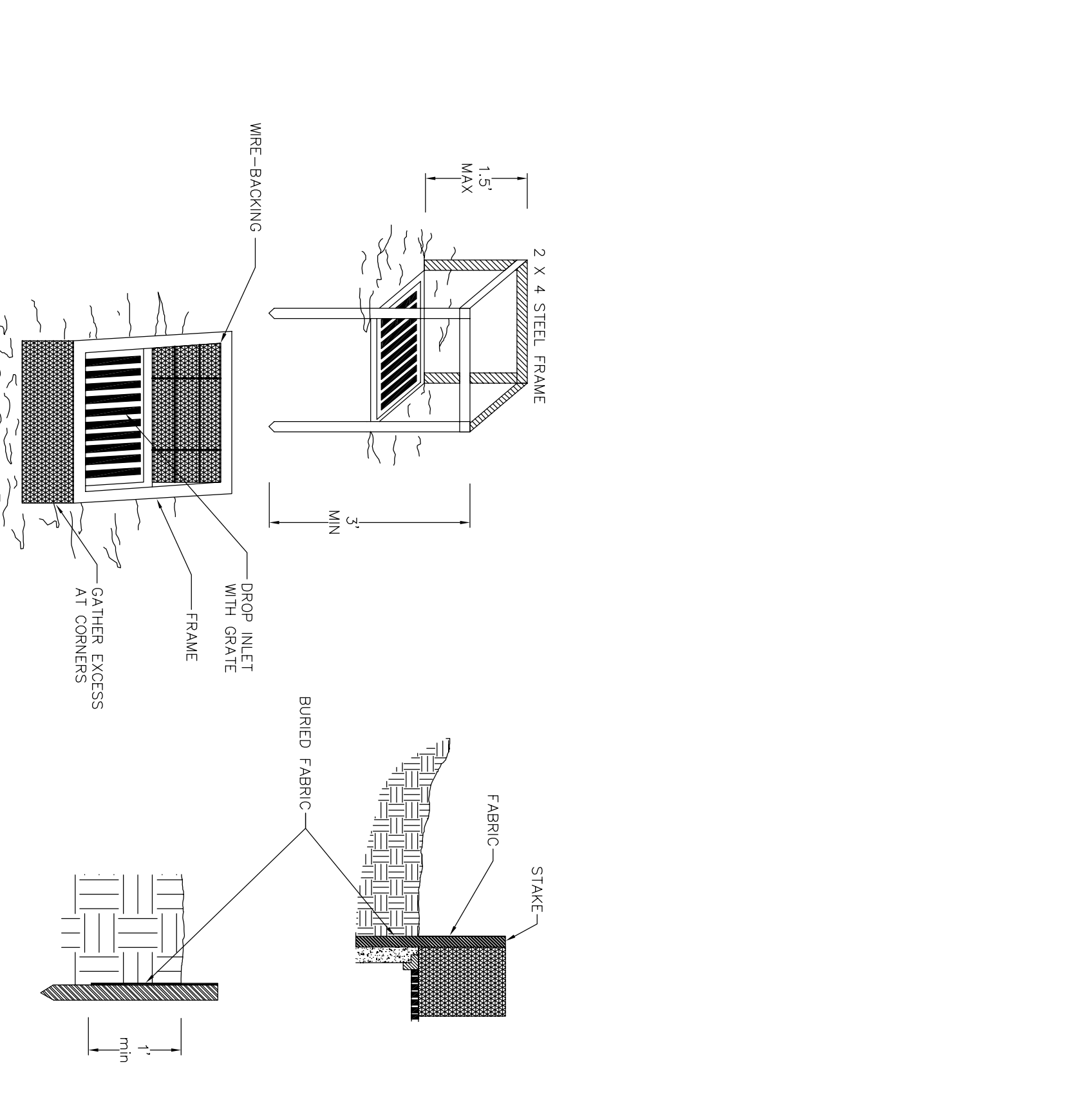
SHEET NUMBER: C-8
SCALE: NOT TO SCALE

JOB/FILE NUMBER: 163.017

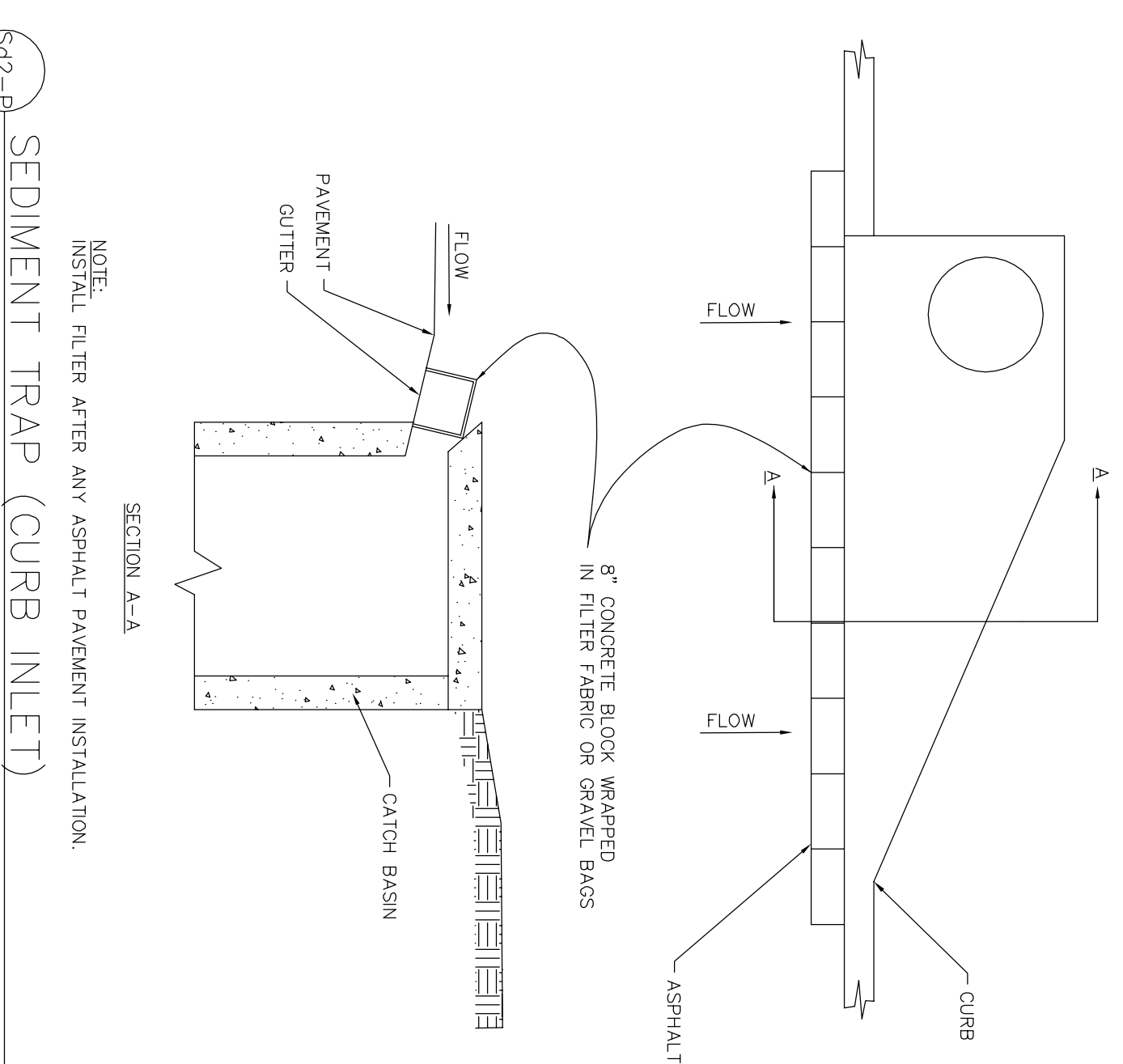


Sd1-C SILT FENCE DETAIL - TYPE C
NOT TO SCALE

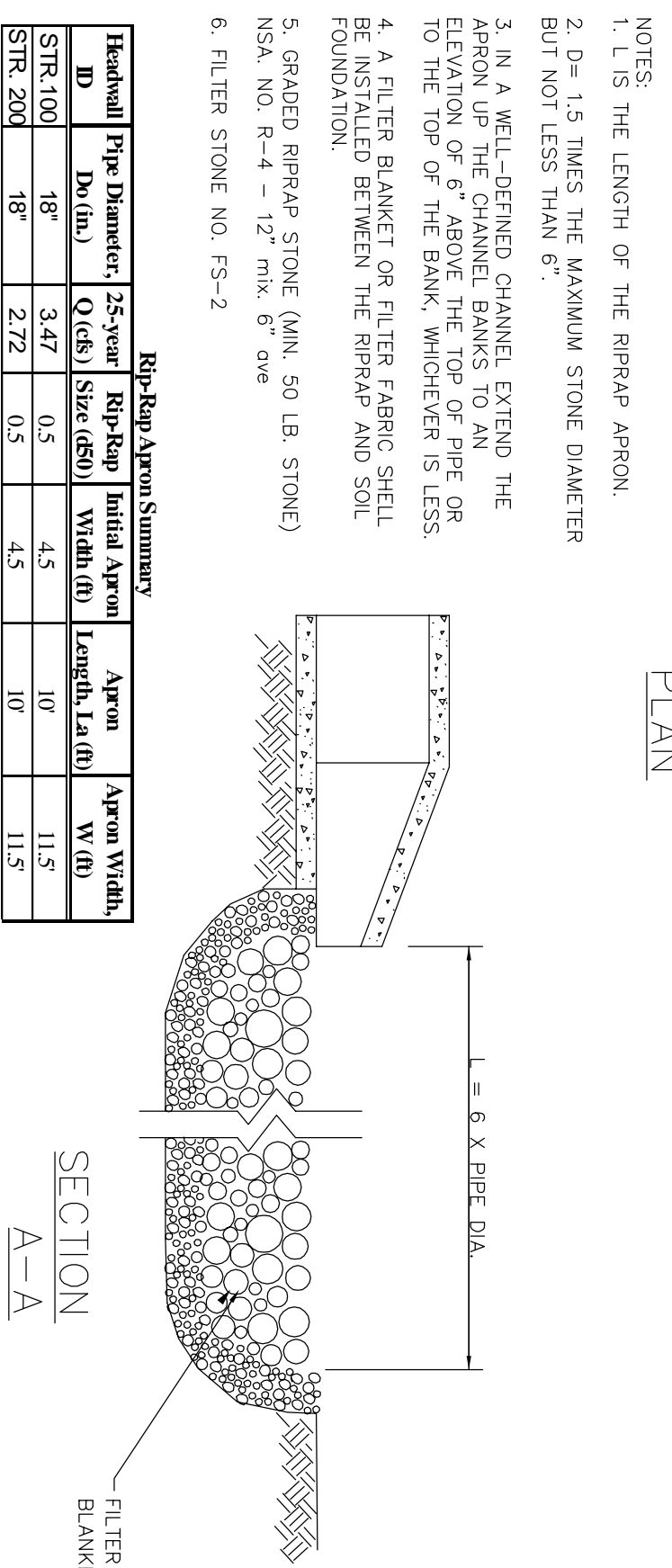
Sd2-C TEMPORARY CONSTRUCTION EXIT
NOT TO SCALE



Sd2-F SEDIMENT TRAP
NOT TO SCALE



Sd2-F SEDIMENT TRAP (CURB INLET)
NOT TO SCALE



Sd1-B RIP RAP
NOT TO SCALE

- FOR STAKES USE STEEL WITH A MINIMUM LENGTH OF 3 FEET.
- SPACE STAKES EVENLY AROUND THE PERIMETER OF THE INLET A MAXIMUM OF 3 FEET APART, AND SECURELY DRIVE THEM INTO THE GROUND, MINIMUM OF 18 INCHES DEEP.
- TO PROVIDE NEEDED STABILITY TO THE INSTALLATION, FRAME WITH 2 X 4 INCH WOOD STRIPS AROUND THE CREST OF THE OVERFLOW AREA AT A MAXIMUM OF 1.5 FEET ABOVE THE DROP INLET CREST.
- PLACE THE BOTTOM 12 INCHES OF THE FABRIC IN A TRENCH AND BACKFILL THE TRENCH WITH CRUSHED STONE OR COMPACTED SOIL.
- FASTEN FABRIC SECURELY TO THE STAKES AND FRAME. JOINTS MUST BE OVERLAPPED TO THE NEXT STAKE.
- THE TOP OF THE FRAME AND FABRIC MUST BE WELL BELOW THE GROUND ELEVATION DOWNSLOPE FROM THE DROP INLET TO KEEP RUNOFF FROM BYPASSING THE INLET. IT MAY BE NECESSARY TO BUILD A TEMPORARY DIKE ON THE DOWN SLOPE SIDE OF THE STRUCTURE TO PREVENT BYPASS FLOW.

- NOTES:
- IS THE LENGTH OF THE RIPRAP APRON.
 - D= 1.5 TIMES THE MAXIMUM STONE DIAMETER BUT NOT LESS THAN 6\"/>
 - IN A WELL-DRENCHED CHANNEL EXTEND THE RIPRAP APRON TO THE POINT OF CHANNEL BANKS TO RIPRAP OR FROM TOP OF CHANNEL BANKS TO RIPRAP OR TO THE TOP OF THE BANK, WHICHEVER IS LESS.
 - A FILTER BLANKET OR FILTER FABRIC SHALL BE INSTALLED BETWEEN THE RIPRAP AND SOIL FOUNDATION.
 - GRAPE RIPRAP STONE (MIN. 50 LB. STONE) NS&A, NO. R-4 - 12\"/>
 - FLITER STONE NO. FS-2

Headwall	Pipe Diameter	25-year Q (cfs)	Rip-Rap Initial Apron Length, La (ft)	Apron Width, W (ft)
STR-100	18"	3.47	0.5	4.5
STR-200	18"	2.72	0.5	4.5