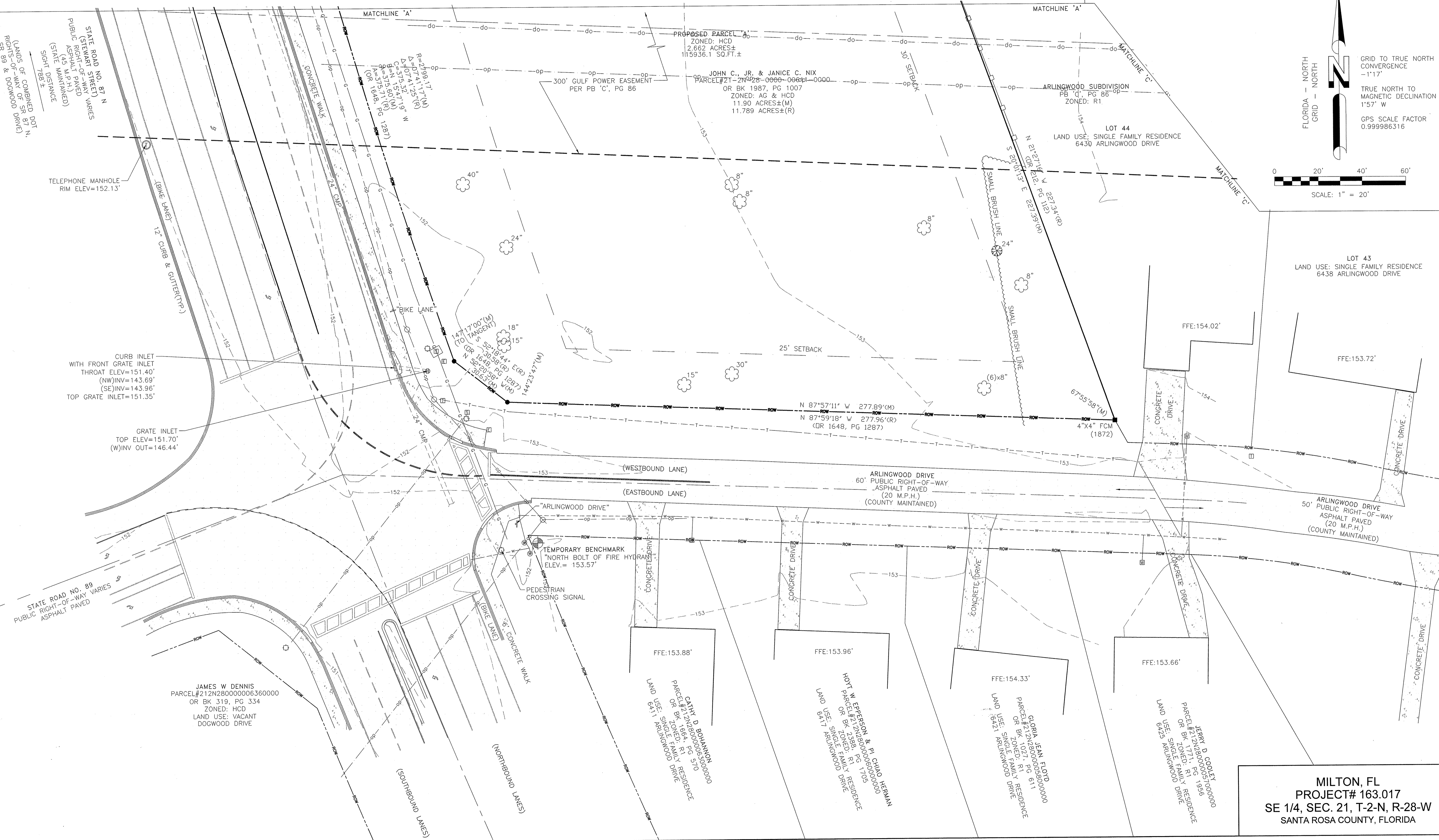
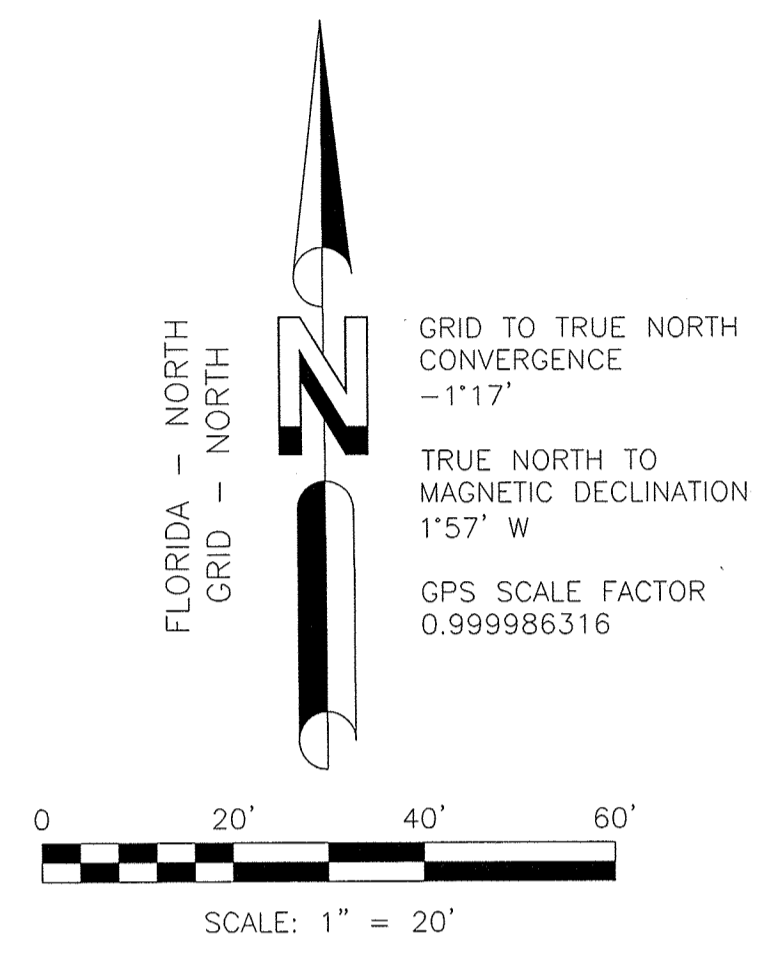


LEGEND	
[Symbol]	= POWER BOX
[Symbol]	= TELEPHONE PEDESTAL
[Symbol]	= WATER VALVE
[Symbol]	= LIGHT POLE
[Symbol]	= POWER POLE
[Symbol]	= GUY ANCHOR
[Symbol]	= STORM SEWER MANHOLE
[Symbol]	= GRATE INLET
[Symbol]	= UNDERGROUND ELECTRIC
[Symbol]	= OAK TREE
[Symbol]	= PINE TREE
[Symbol]	= WATER METER
[Symbol]	= SIGN
[Symbol]	= TRAFFIC SIGNAL POLE
[Symbol]	= FIRE HYDRANT
[Symbol]	= TELEPHONE MANHOLE
[Symbol]	= SIGNAL BOX
[Symbol]	= SETBACK
[Symbol]	= STORM SEWER LINE
[Symbol]	= 3" H.P. UNDERGROUND GAS LINE
[Symbol]	= RIGHT-OF-WAY
[Symbol]	= UNDERGROUND WATER LINE
[Symbol]	= OVERHEAD POWER
[Symbol]	= 6" WOOD FENCE WITH HOGWIRE
[Symbol]	= UNDERGROUND FIBER OPTIC CABLE
[Symbol]	= 5/8" CAPPED REBAR SET (SMW LS 0006141)
[Symbol]	= FOUND 5/8" CAPPED REBAR (BENCHMARK, LB5170) UNLESS OTHERWISE NOTED
[Symbol]	= FOUND CONCRETE MONUMENT
[Symbol]	= TEMPORARY BENCH MARK
[Symbol]	= POINT OF BEGINNING
[Symbol]	= POINT OF COMMENCEMENT
[Symbol]	= RECORDED INFORMATION
[Symbol]	= MEASURED INFORMATION

SITE ADDRESS
6384 HWY 87 N
MILTON, FL 32583

NO.	REVISION	DATE	BY
1	MANNING RD ROW	05/22/09	DCP
2	WATER & FOC LINES	05/28/09	DCP
3	FAMILY DOLLAR UPDATE	12/23/09	DCP
4	COMMENTS FROM CLIENT	01/14/10	AAK



MILTON, FL

PROJECT NO. 09-0109

DRAWN BY: DCP
 CHECKED BY: AAK
 FIELD CREW: CS
 APPROVED BY: WHS
 DATE: 03/24/09
 SCALE: 1" = 20'
 SHEET 2 OF 7

ALTAACSM LAND TITLE SURVEY

FOR:
FORESITE GROUP, INC
 5185 PEACHTREE PARKWAY, SUITE 240
 NORCROSS, GA 30092

SMW ENGINEERING GROUP, INC.
 1550 Woods of Riverchase Drive
 Suite 100
 Hoover, Alabama 35244
 Ph: 205-252-8985
 www.smweng.com

MILTON, FL
PROJECT# 163.017
SE 1/4, SEC. 21, T-2-N, R-28-W
SANTA ROSA COUNTY, FLORIDA