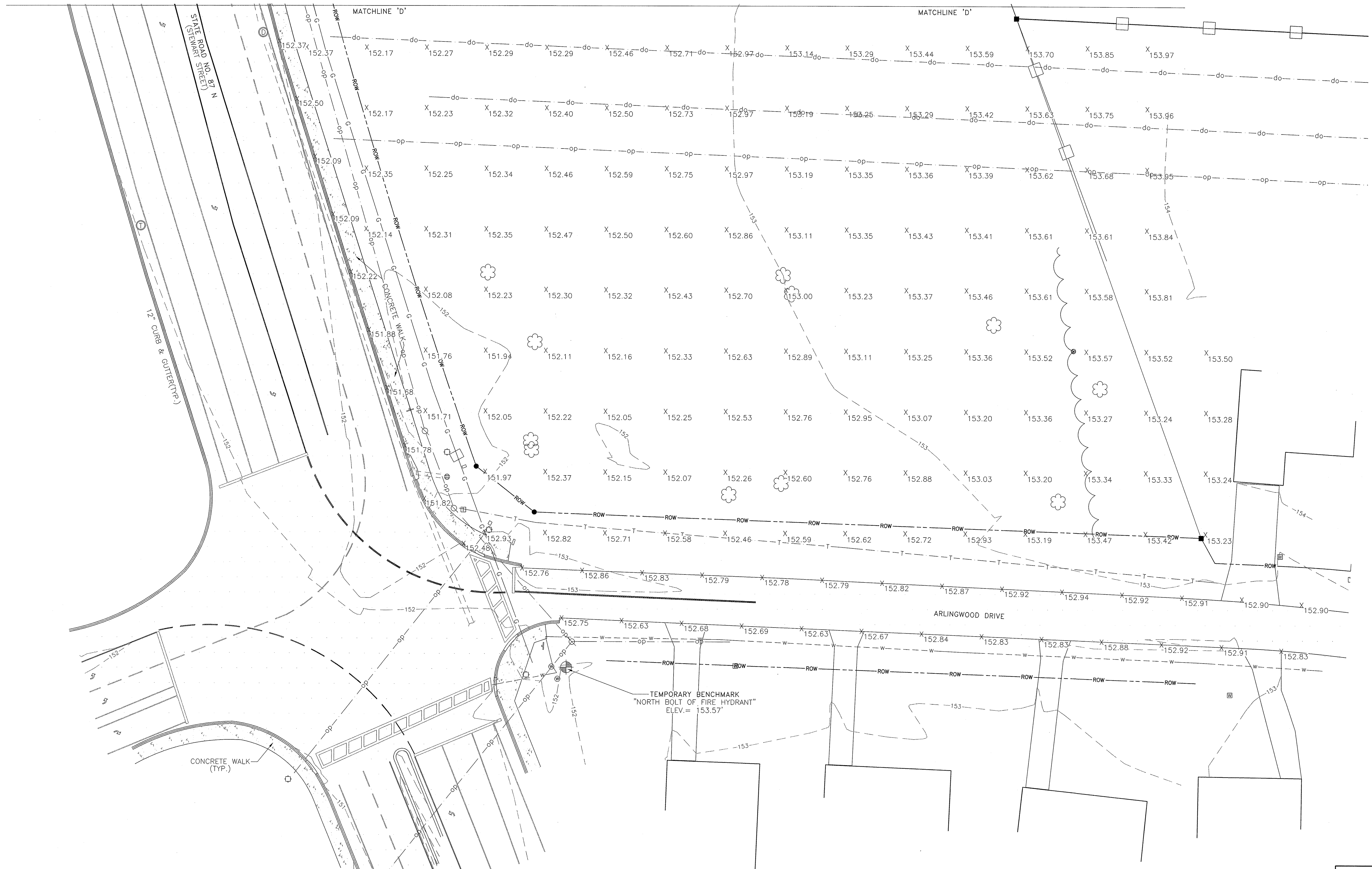
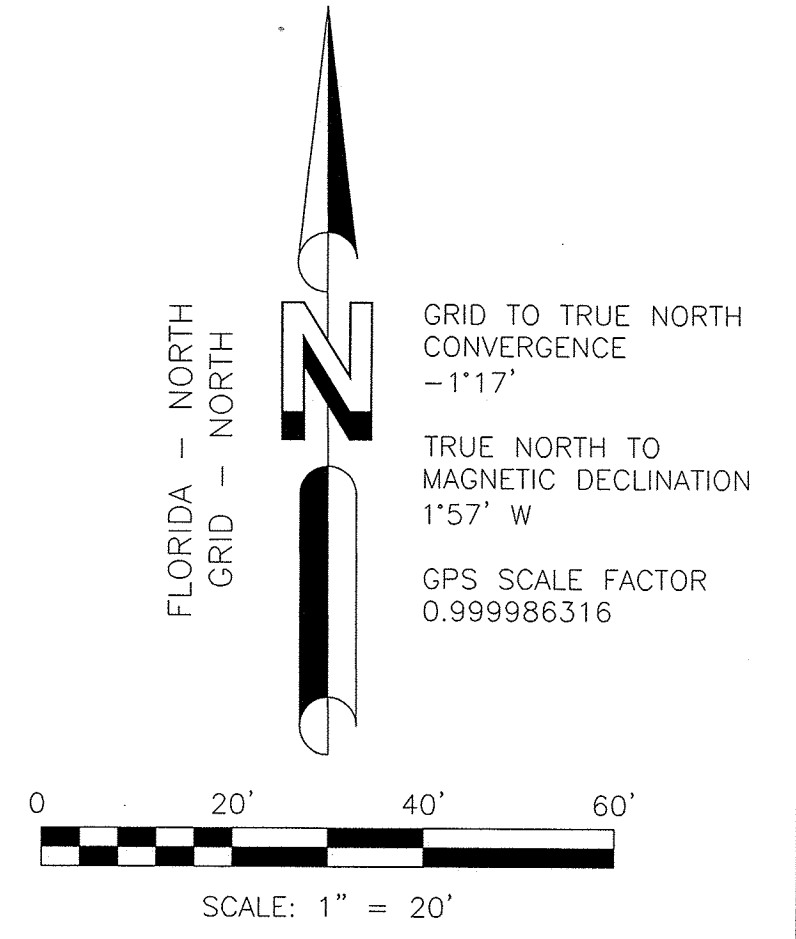


LEGEND	
☐ = POWER BOX	○ = OAK TREE
⊕ = TELEPHONE PEDESTAL	○ = PINE TREE
⊙ = WATER VALVE	○ = WATER METER
⊛ = LIGHT POLE	⊙ = FOUND 5/8" CAPPED REBAR (BENCHMARK, LB5170) UNLESS OTHERWISE NOTED
⊕ = POWER POLE	⊙ = TRAFFIC SIGNAL POLE
⊕ = GUY ANCHOR	⊕ = FIRE HYDRANT
⊕ = STORM SEWER MANHOLE	⊕ = TELEPHONE MANHOLE
⊕ = GRATE INLET	⊕ = SIGNAL BOX
⊕ = UNDERGROUND ELECTRIC BOX	⊕ = FOUND CONCRETE MONUMENT
⊕ = SETBACK	⊕ = TEMPORARY BENCH MARK
⊕ = STORM SEWER LINE	POB = POINT OF BEGINNING
⊕ = 3" H.P. UNDERGROUND GAS LINE	POC = POINT OF COMMENCEMENT
⊕ = RIGHT-OF-WAY	(R) = RECORDED INFORMATION
⊕ = UNDERGROUND WATER LINE	(M) = MEASURED INFORMATION
⊕ = OVERHEAD POWER	
⊕ = 6' WOOD FENCE WITH HOGWIRE	
⊕ = UNDERGROUND FIBER OPTIC CABLE	

SITE ADDRESS
6384 HWY 87 N
MILTON, FL 32583

NO.	REVISION	DATE	BY
1	MANNING RD ROW	05/22/09	DCP
2	WATER & FOC LINES	05/28/09	DCP
3	FAMILY DOLLAR UPDATE	12/23/09	DCP
4	COMMENTS FROM CLIENT	01/14/10	AAK



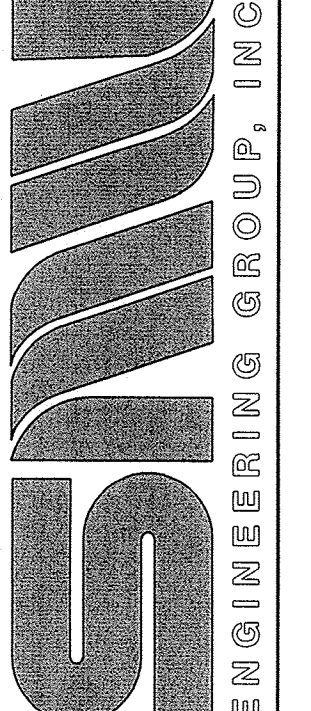
MILTON, FL

PROJECT NO.
09-0109

DRAWN BY: DCP
 CHECKED BY: AAK
 FIELD CREW: CS
 APPROVED BY: WHS
 DATE: 03/24/09
 SCALE: 1" = 20'
 SHEET 5 OF 7

ALTA/ACSM LAND TITLE SURVEY
FOR: FORESITE GROUP, INC
 5185 PEACHTREE PARKWAY, SUITE 240
 NORCROSS, GA 30092

SMW Engineering Group, Inc.
 1550 Woods of Riverchase Drive
 Suite 100
 Hoover, Alabama 35244
 Ph. 205-252-6985
 www.smweng.com



MILTON, FL
PROJECT# 163.017
SE 1/4, SEC. 21, T-2-N, R-28-W
SANTA ROSA COUNTY, FLORIDA